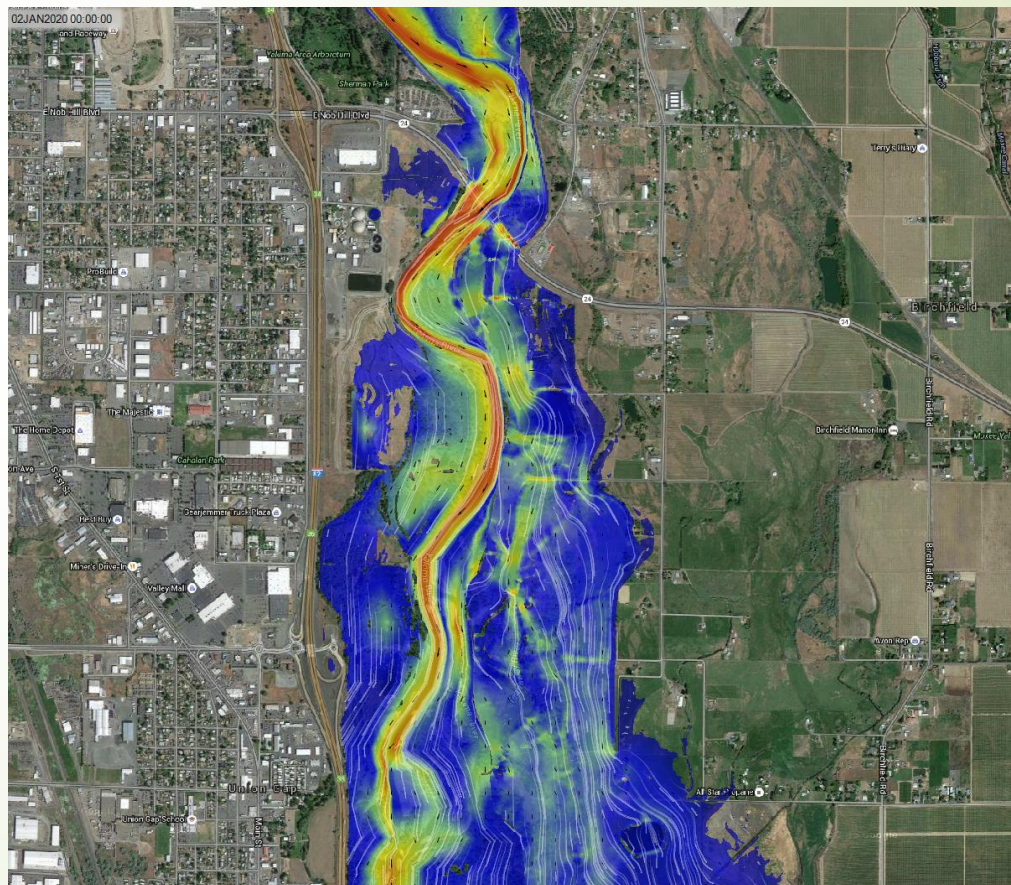
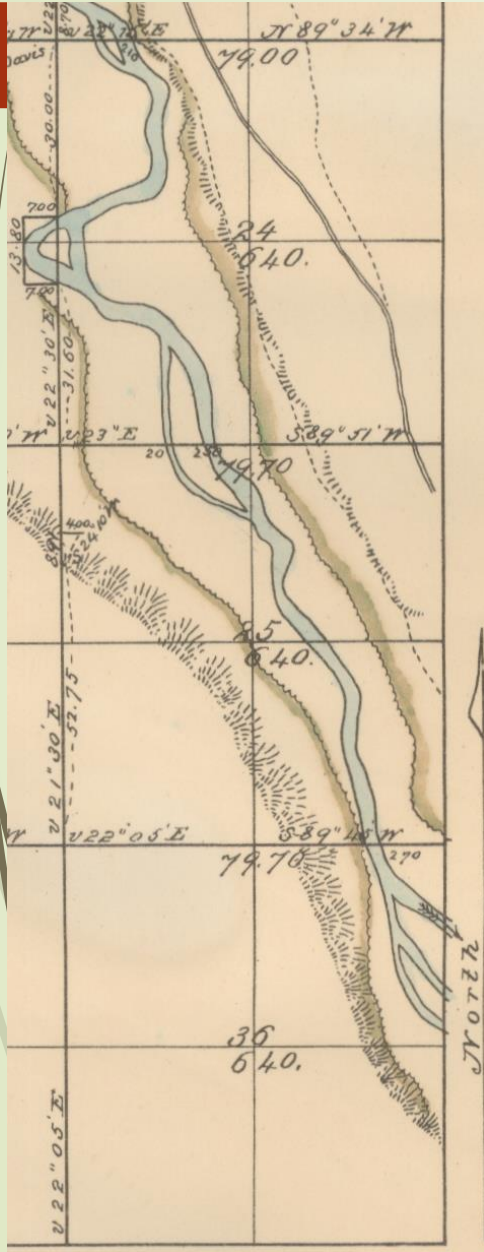


Floodplain Restoration on the Naches and Yakima Rivers 2010-2016

Joel Freudenthal
Yakima County Flood Control Zone District
June 15, 2016



1879



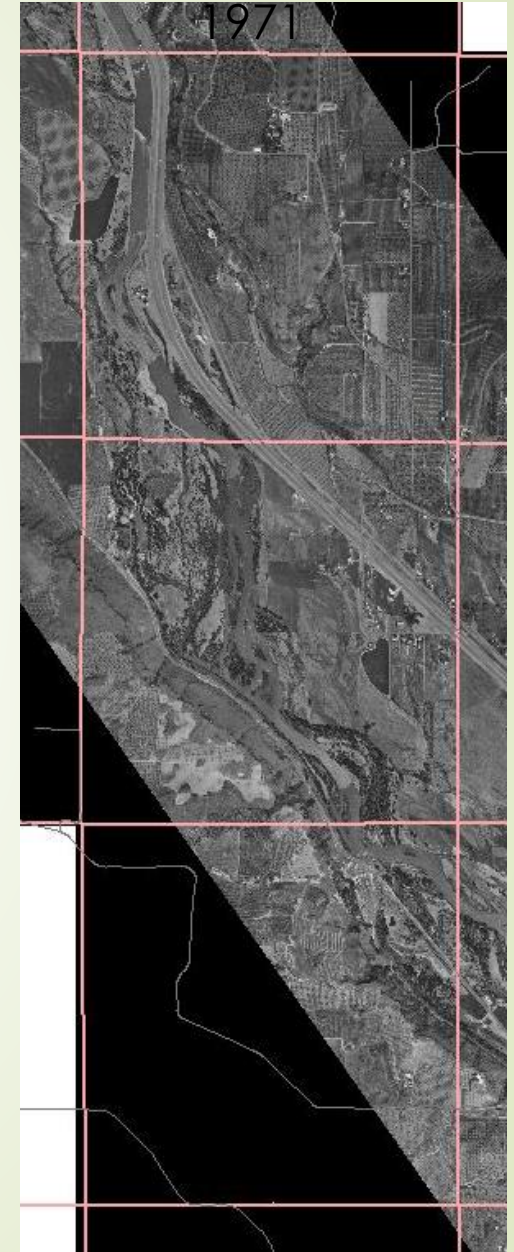
1906



1947



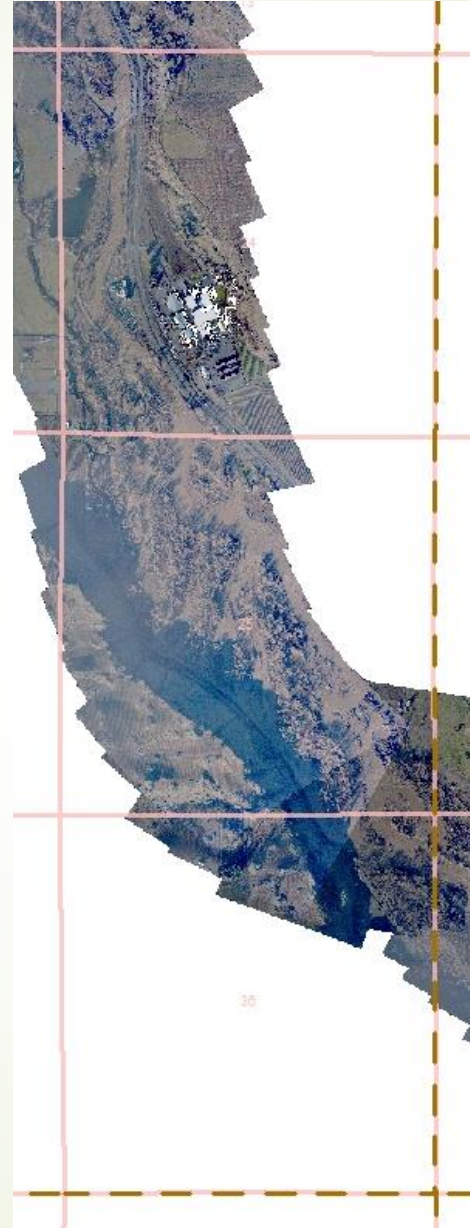
1971

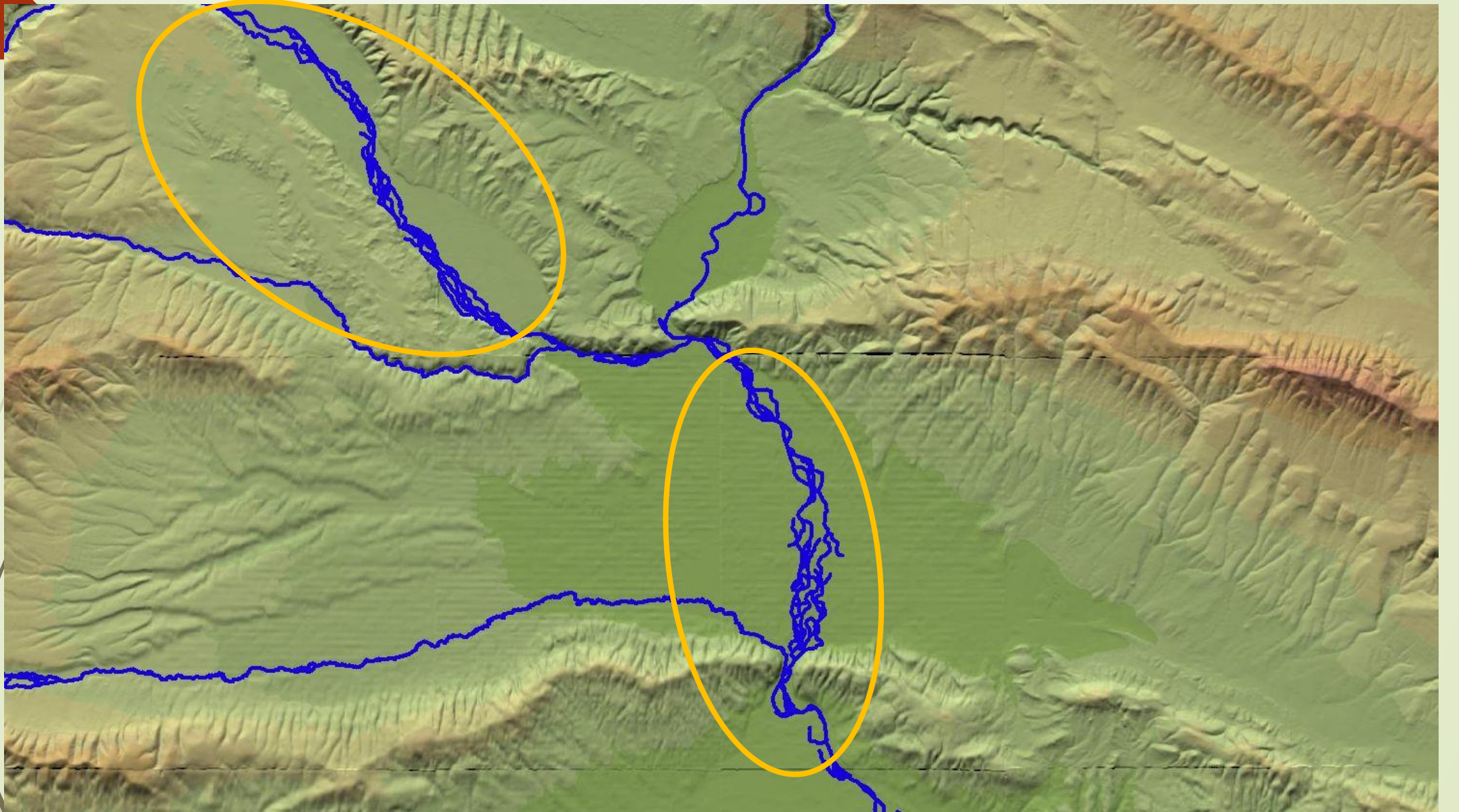


2002



2015







NACHES RIVER
N-9 SEGMENT
PROJECT
PHASE 2

FC 3493

PREPARED UNDER
THE DIRECTION OF:

PRELIMINARY
DESIGN

COUNTY ENGINEER
DATE:

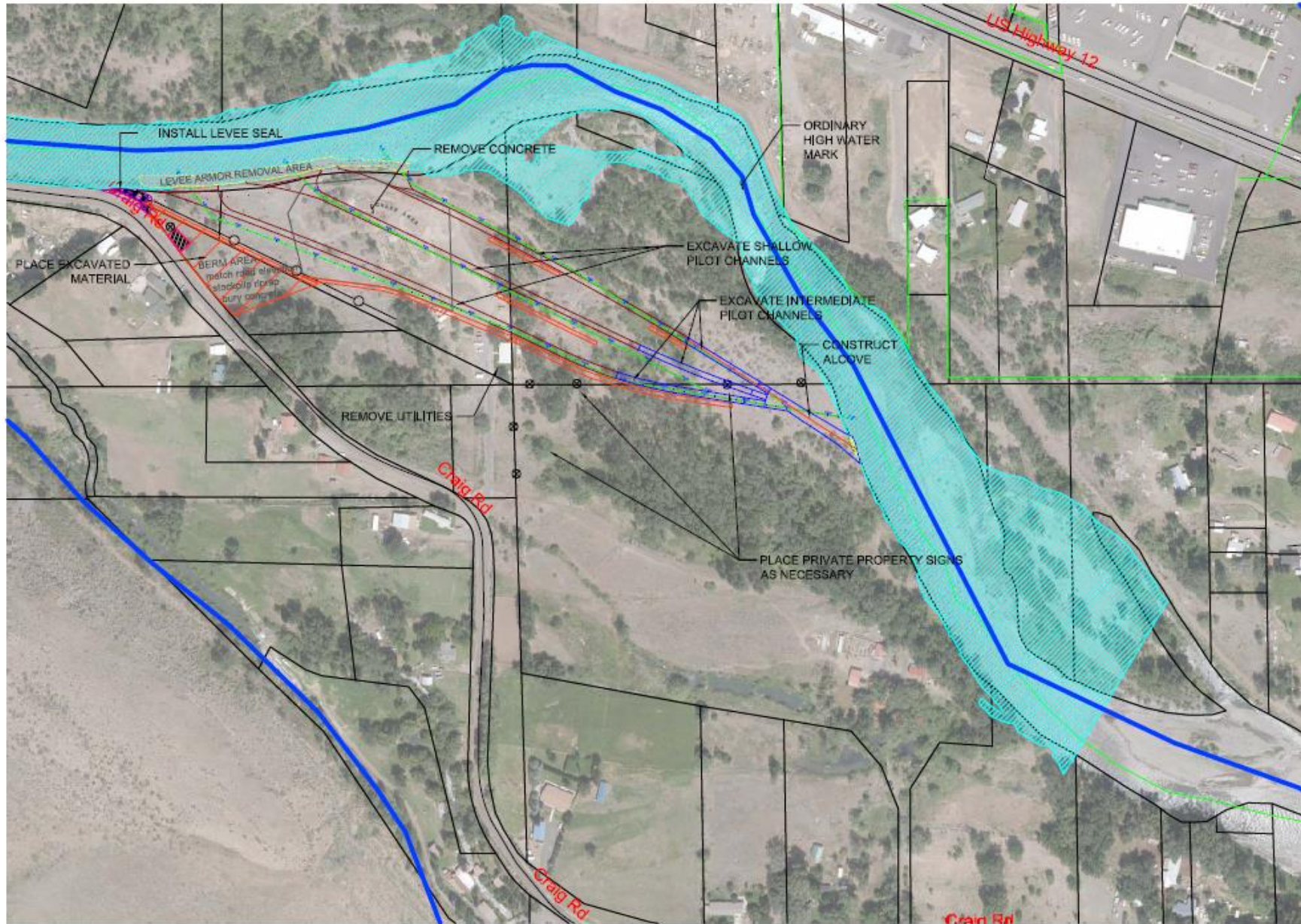
PROJECT ENGINEER:
T. KEENHAN

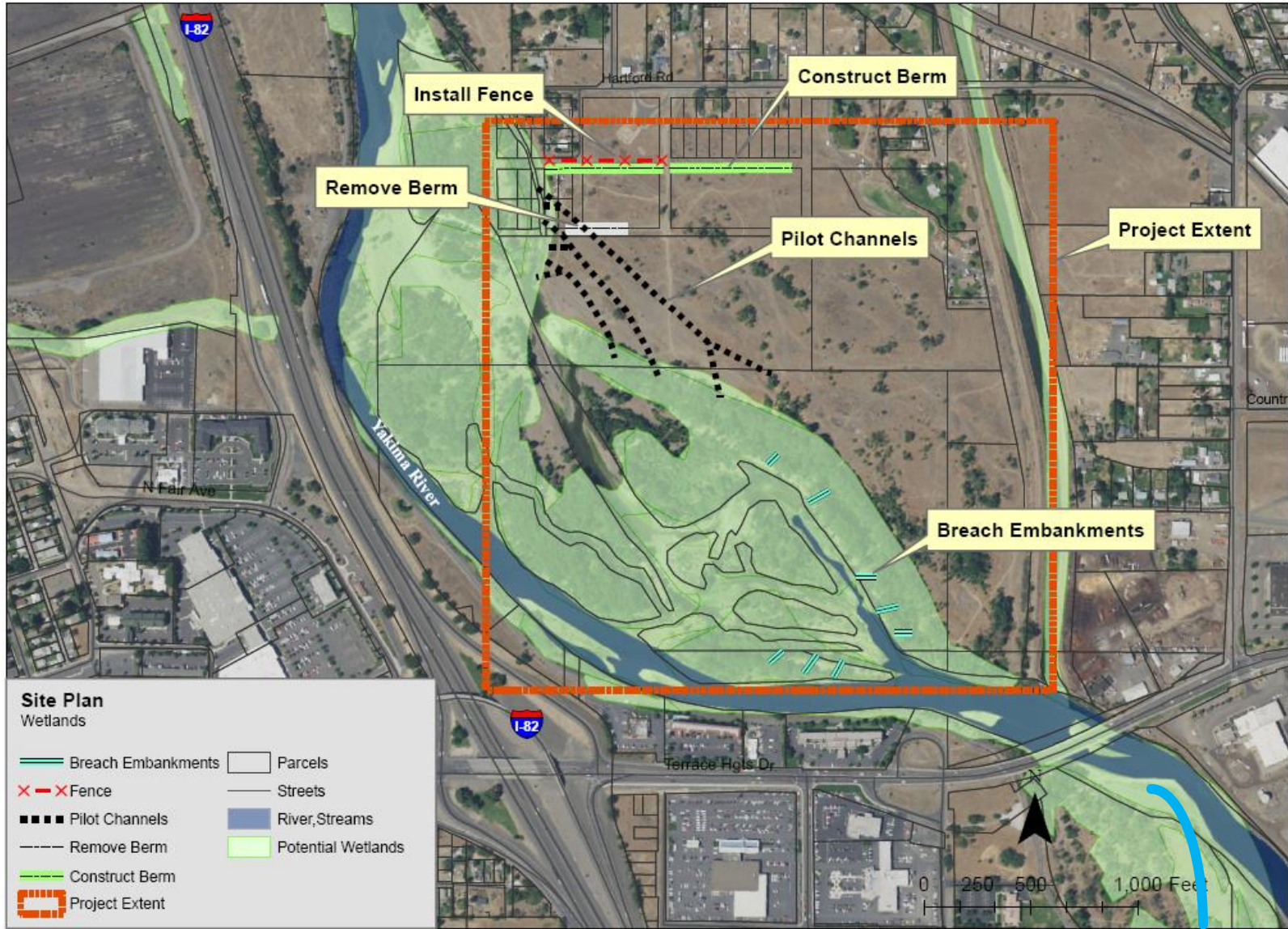
DRAWN BY: T. ROSS-MAVENS CHECKED BY: J. FREUDENTHAL

REVISION

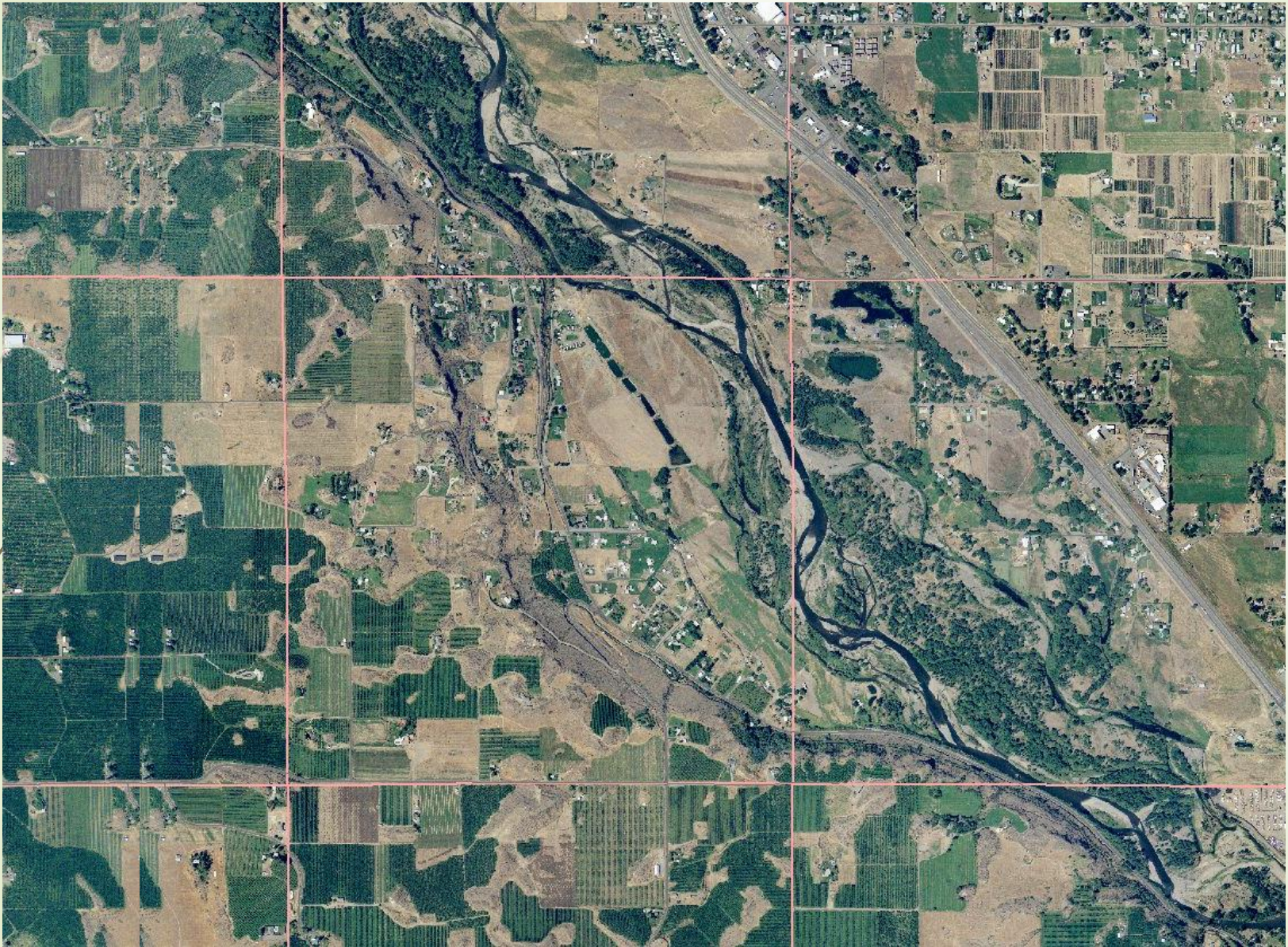
LARGE
SITE PLAN

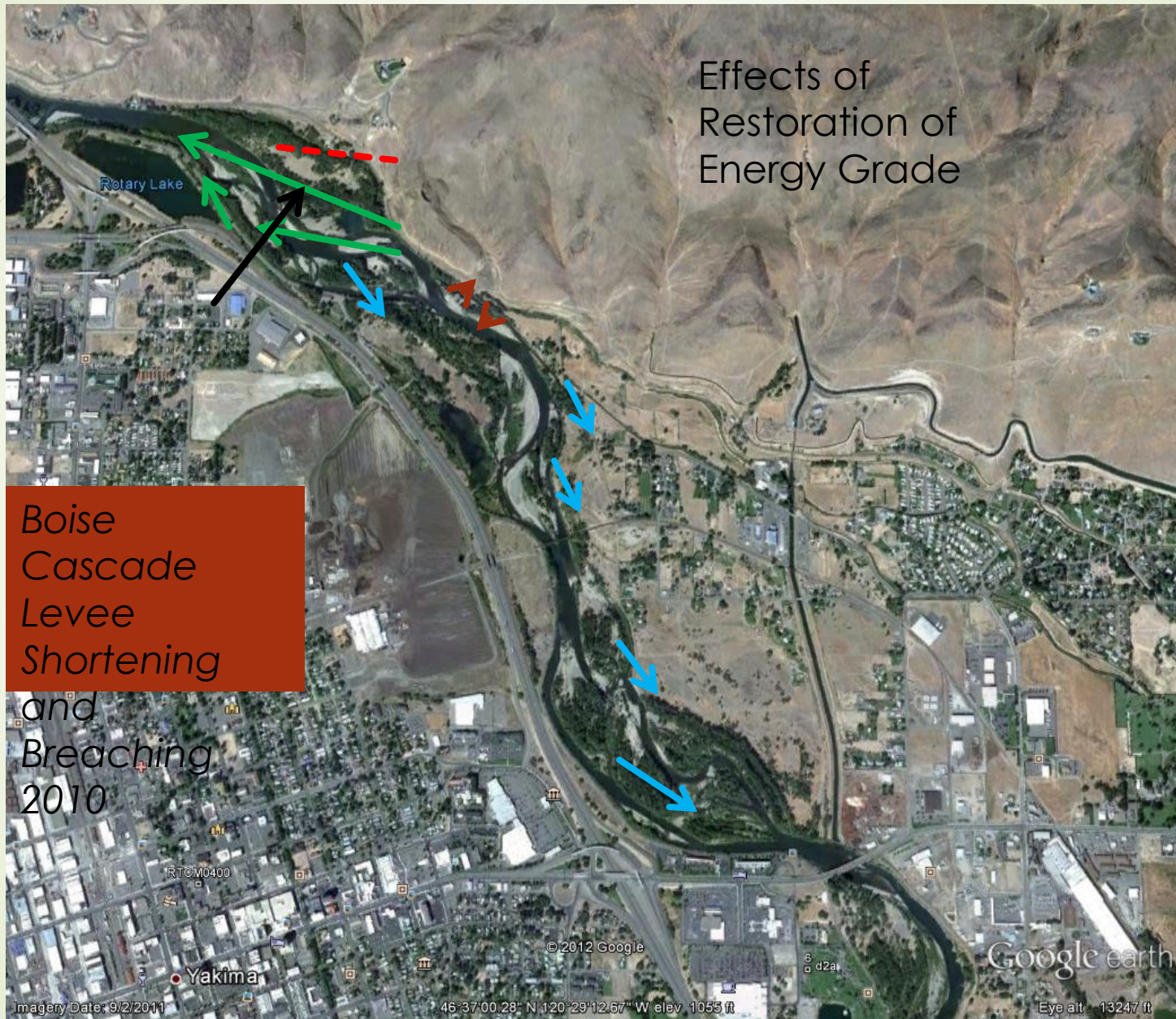
SHEET 1 OF 6





Y-9 Floodplain Restoration





Effects of
Restoration of
Energy Grade

Boise
Cascade
Levee
Shortening
and
Breaching
2010

Rotary Lake

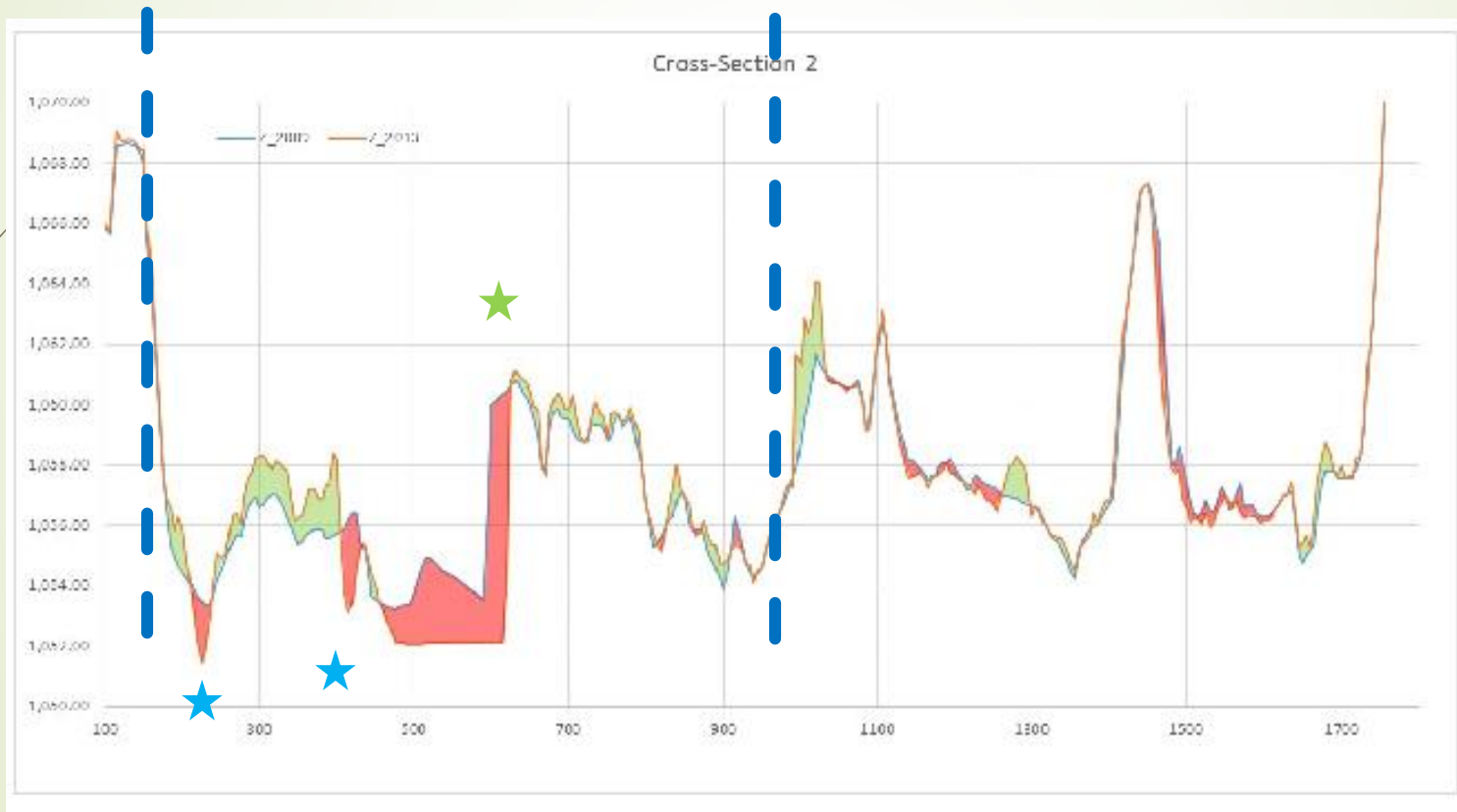
Imagery Date: 9/2/2011

© 2012 Google
Yakima
46°37'00.28" N 120°29'12.67" W elev 1055 ft

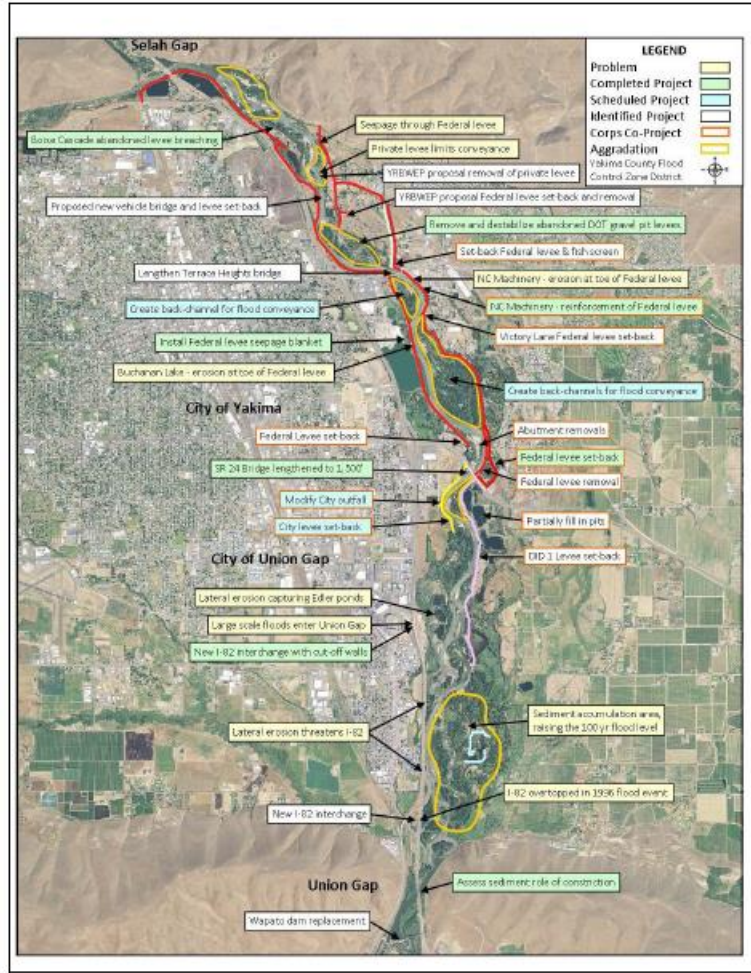
Google earth

Eye alt 13247 ft

Pre and Post Project X sections “Acceleration Channel” Downstream of Breach



— Active Channel
/Floodplain Boundary —



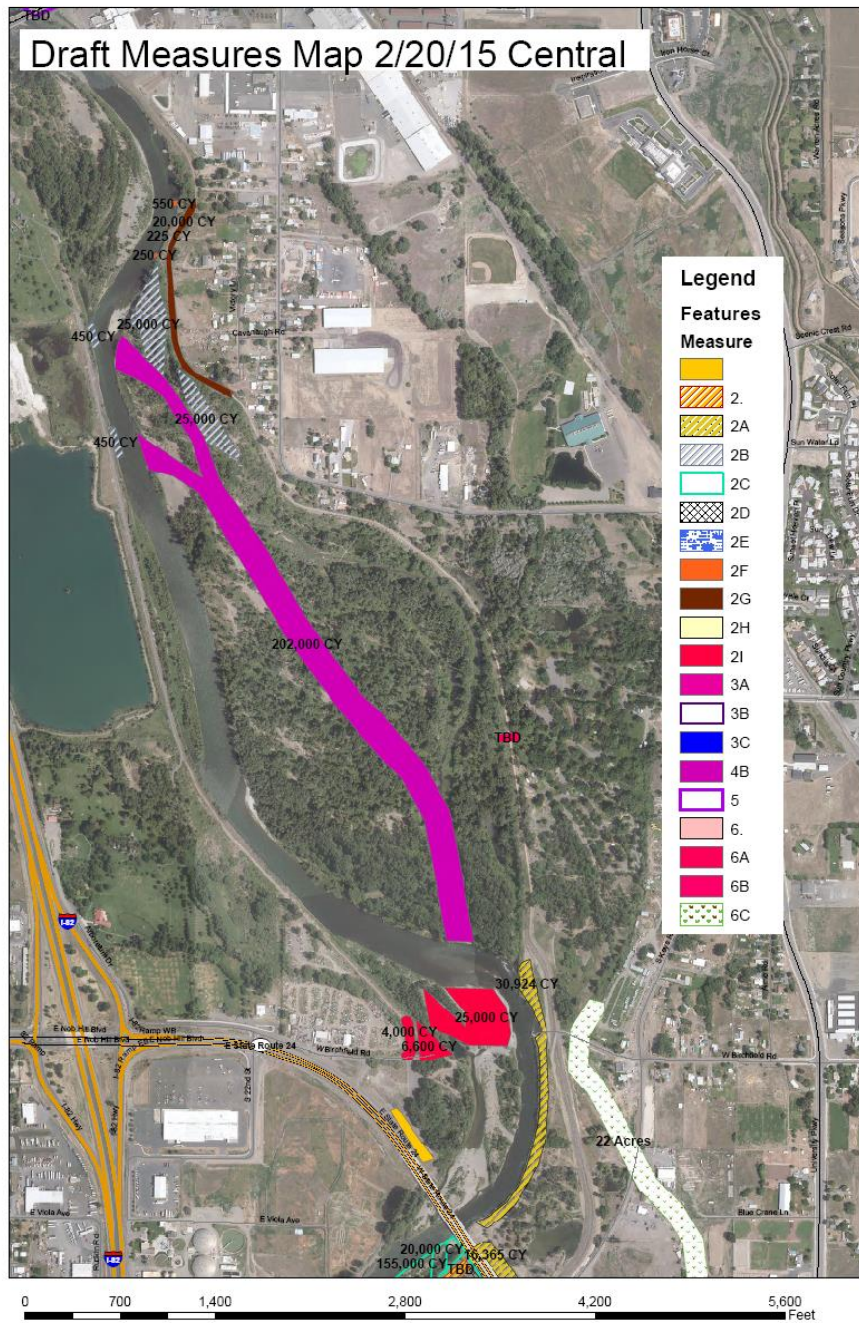
Gap to Gap

\$805K – YBIP

\$38M So Far

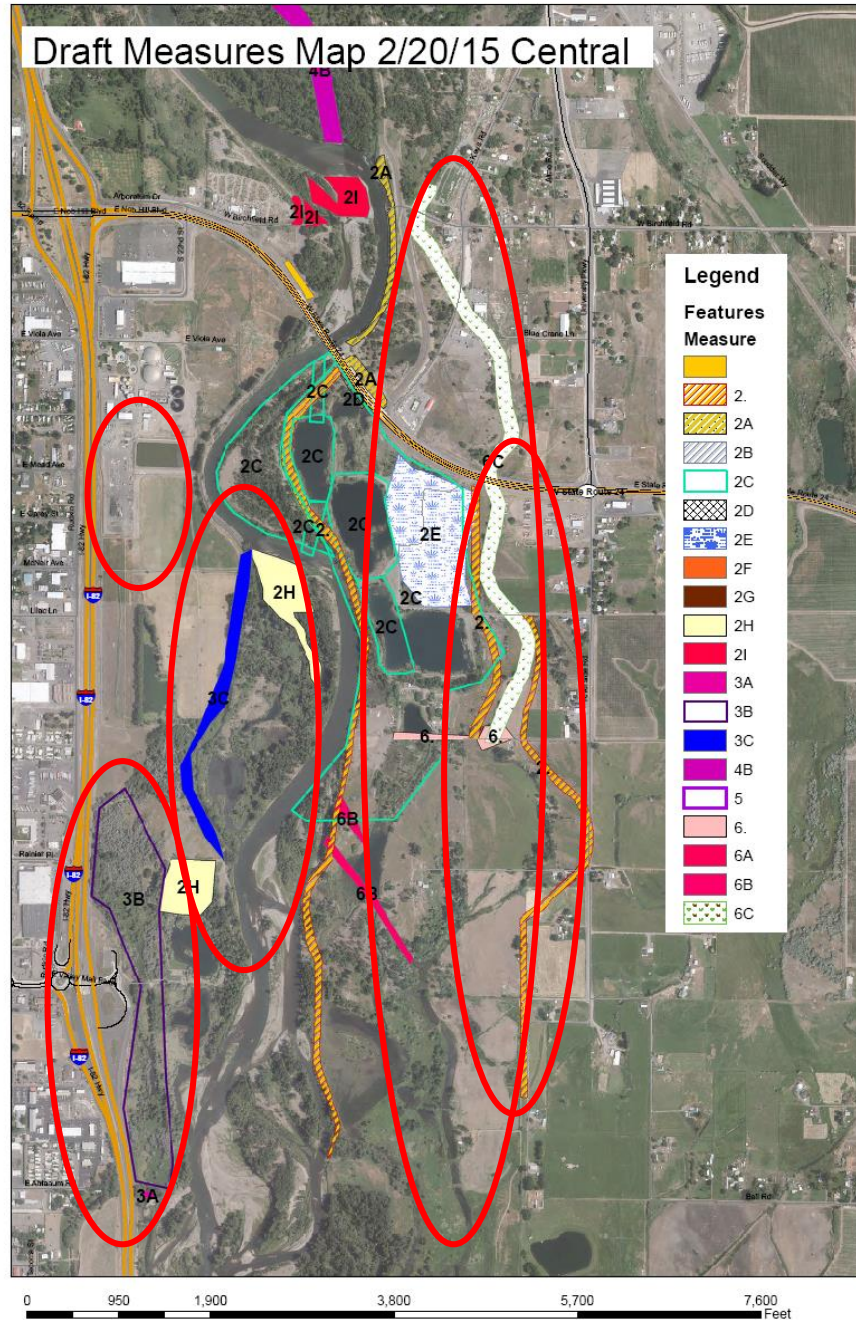
\$10M from
Corps in 2017

Draft Measures Map 2/20/15 Central



Yakima River
Gap to Gap
10% Design -
Upper

Draft Measures Map 2/20/15 Central



Yakima River Gap
to Gap 10% Design
- Lower

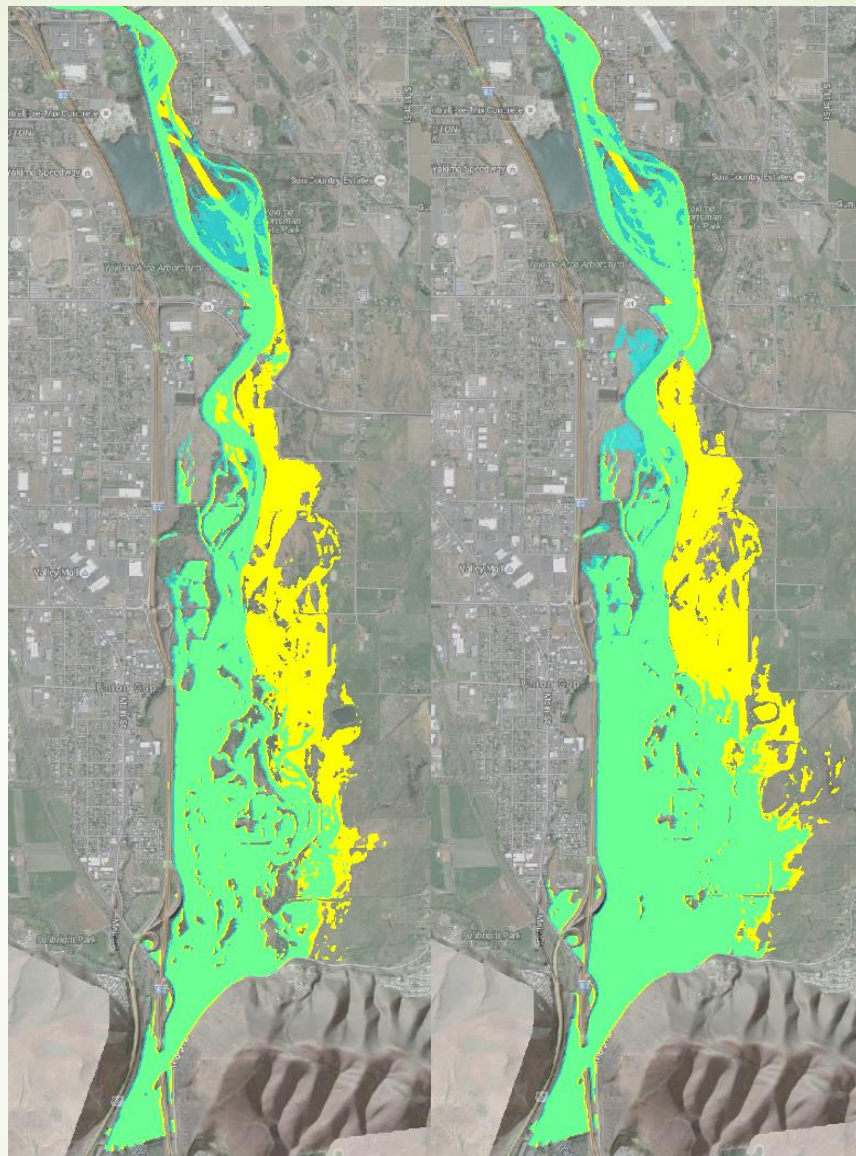


Figure 19. Change in 2 year (left) and 10-year (right) inundation areas in project reach. Yellow area is increased inundation resulting from levee setback, while blue area is an area that is not flooded under with project conditions but is under existing conditions. Green areas are coincident inundation for existing and with project conditions. Note the change in active floodplain extent.

Yakima 1135 Project - Change in 100-year inundation near DID#1 levee

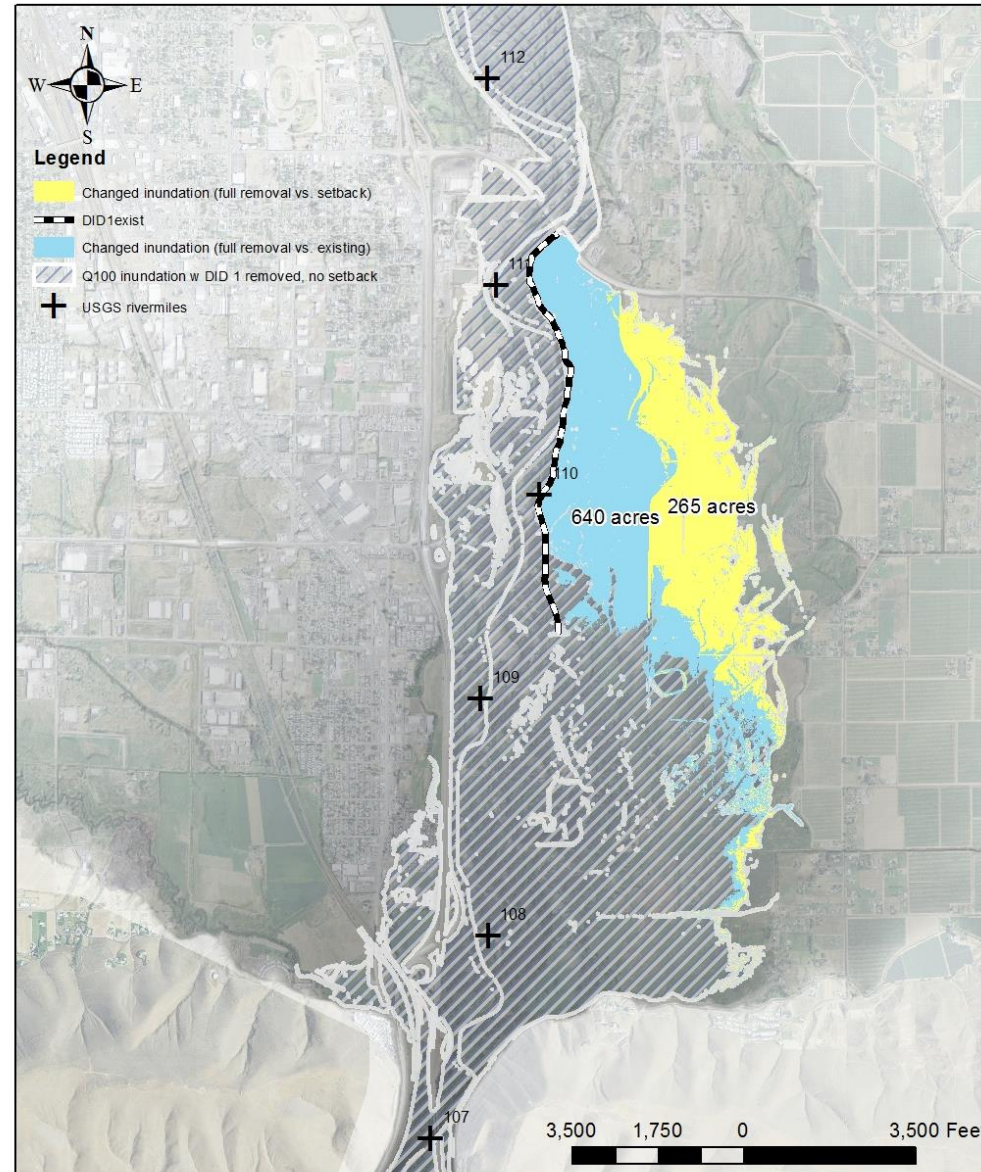


Figure 22. Yakima River 1% AEP (100-year) floodplain changes from existing conditions due to full levee removal (640 acres) and setback levee construction (375 acres)