

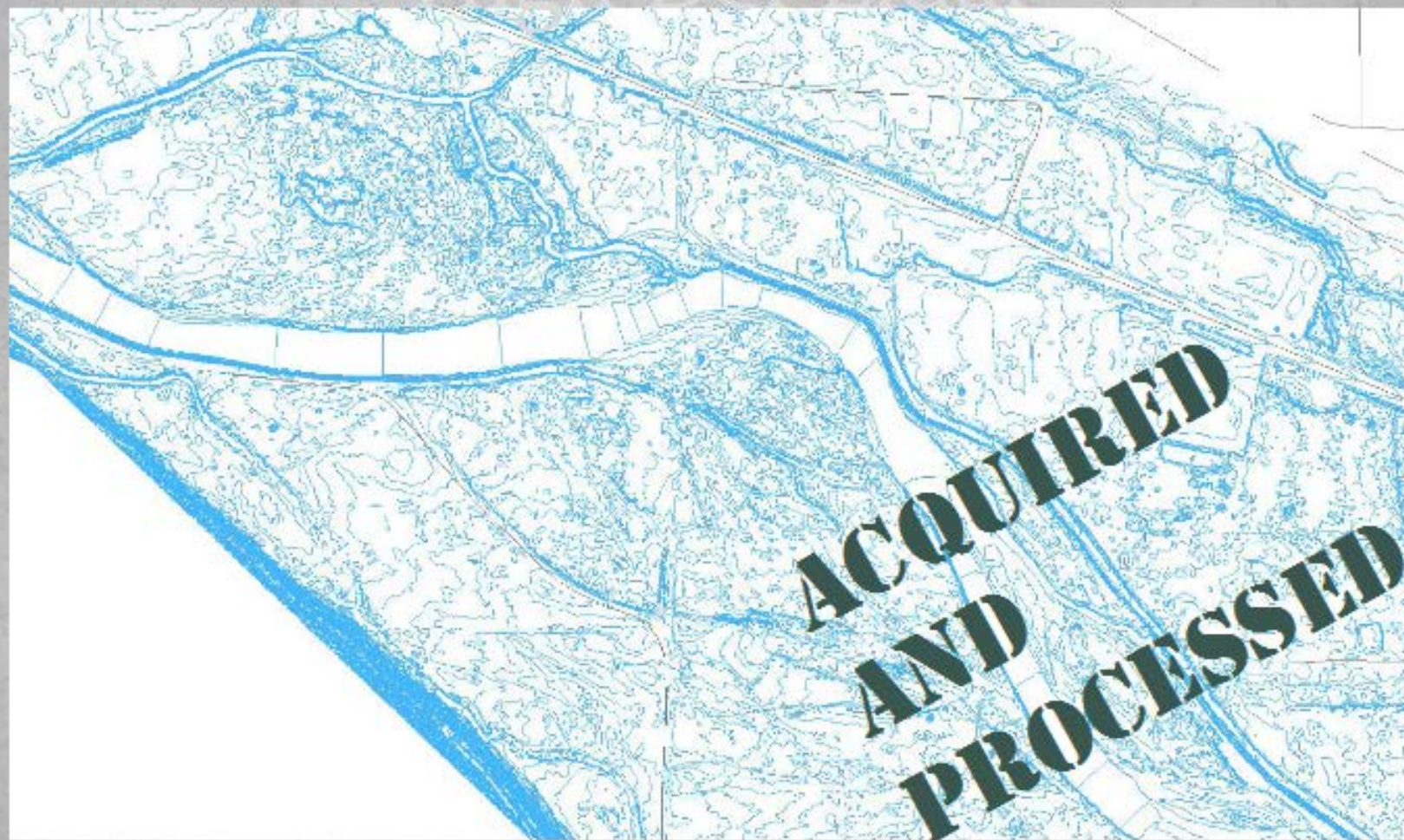
# Projects on the Gap to Gap Reach and the Naches River

Joel Freudenthal  
Yakima County Water Resources

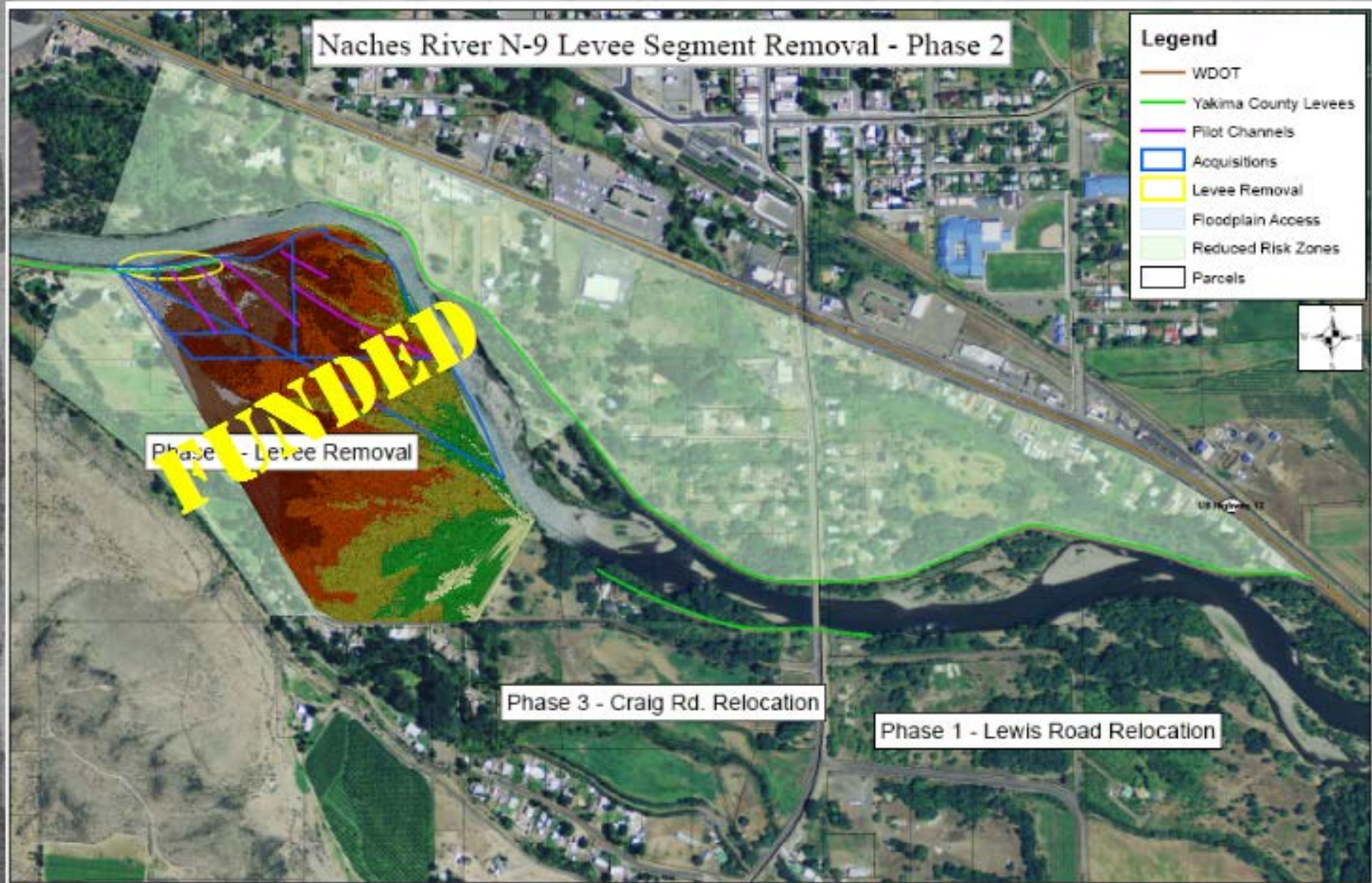
Science and Management  
Conference 2014



# Town of Naches Levee and High Def Lidar



# Town of Naches Levee



# Eschbach Park



# Ramblers Levee Setback



# Ramblers' Phase 2



## Ramblers Park

### Levee Reconfiguration

#### Phase 2 Actions

- Set back existing levee to improve main channel flood conveyance and improve sediment transport across a broad range of flood flows
- Protect Powerhouse Road Prism w/Armor
- Remove access road to increase flood conveyance

# Ramblers' Phase 3 and 4

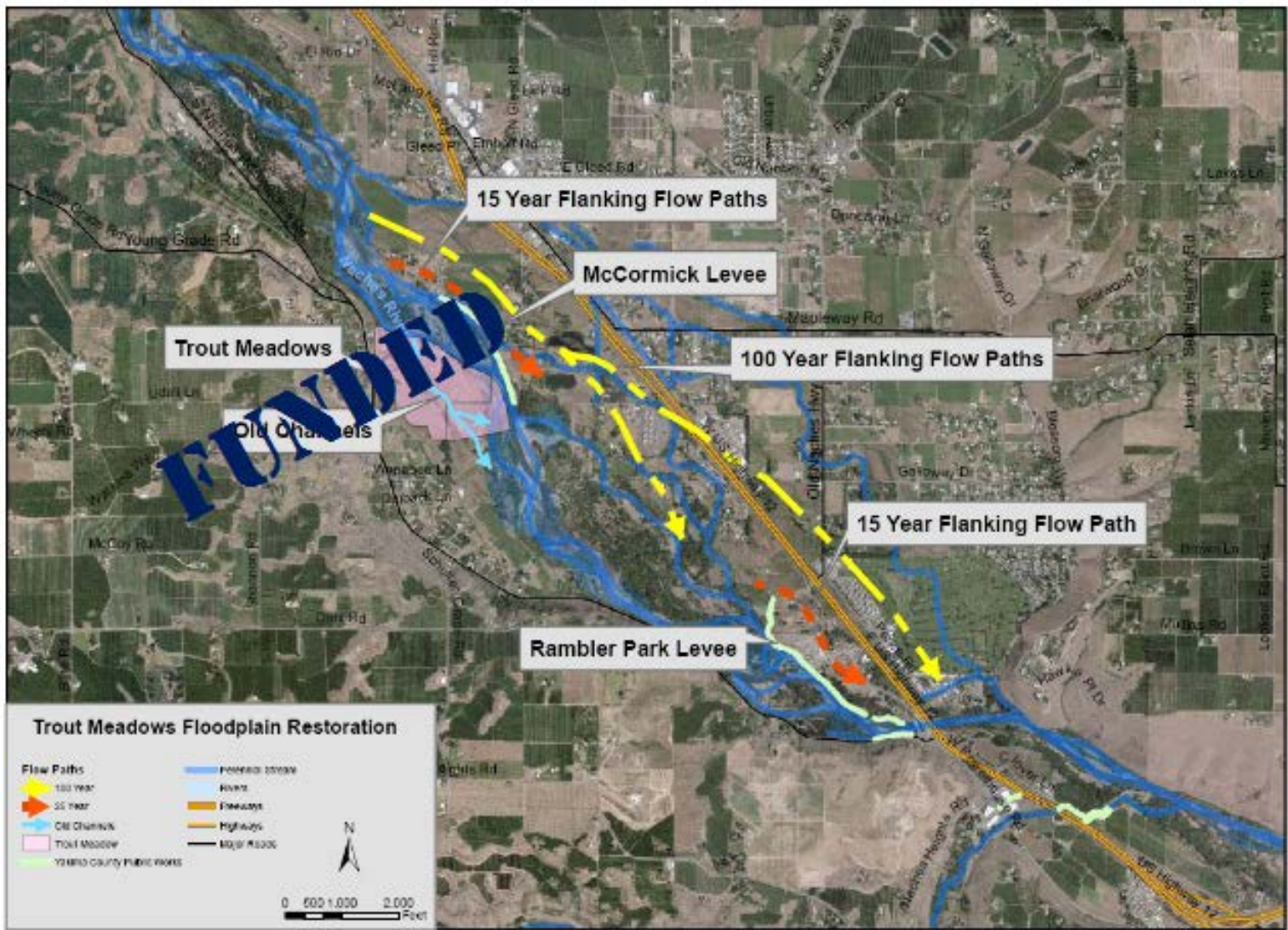


## Ramblers Park

### Levee Reconfiguration

#### Phase 3 and 4 Actions

- Reconfigure fish ladder and dam for conveyance and sediment passage
- When WSDOT replaces bridges, replace with span similar to Co. Road Bridge







Newland

City of Yakima  
WWTP, Outfall  
and Floodplain

Gap to Gap Projects - South SR 24 Bridge



Lester

Central mix

COMPLETED



**MEMBERSHIP IN THE  
STREET CORNER WINE  
AND CHEESE TASTING  
CLUB**

**CANCELLED**

# FCZD Budget Projection

**SCRAPIN' BOTTOM  
FOR THE FUTURE**

		2014	2015	2016	2017	2018	2019
Revenue							
Gas Sales	1	1,000	1,000	1,000	1,000	1,000	1,000
Electricity							
Gasoline							
Tax		1,000	1,000	1,000	1,000	1,000	1,000
Other							
Expenses							
Personnel		400	400	400	400	400	400
Materials							
Utilities							
Travel							
Depreciation							
Other							
Net Income							
FCZD		400	400	400	400	400	400
FCZD		400	400	400	400	400	400

# Finis

*Incorporating the principals of sustainability into  
watershed restoration:  
A workshop to communicate the benefits and challenges  
of floodplain restoration in river systems*

*August 20-21  
Yakima Arboretum  
Yakima, WA*

**SCHEDULED**