

THE TRUST *for* PUBLIC LAND

CONSERVING LAND FOR PEOPLE

Land Conservation Efforts in and around Yakima Basin



Peter Dykstra

Government Affairs/Project Manager

June 15, 2006

TPL's Conservation Services

Conservation Vision

Helping communities to develop implementation strategies for their land and water conservation goals.

Conservation Finance

Helping government partners and communities to create funding for land and water conservation.

Conservation Transactions

Helping government partners and communities to evaluate and purchase land.

Conservation Values Helping people to realize the value of parks and conserved land.



Playgrounds



Community
Gardens



Parks



Trails

TPL works in cities and suburbs across America to ensure that everyone—in particular, every child—enjoys close-to-home access to a park, playground, or natural area.



WORKING LANDS



Forests



Fisheries



Ranches

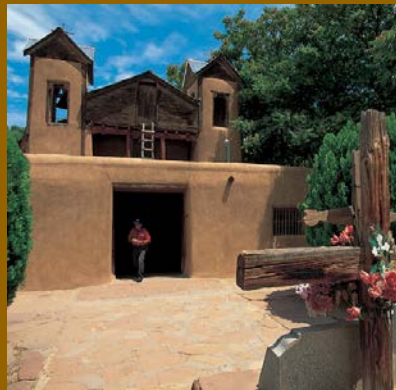


Farms

TPL protects farms, ranches, and forests that support land-based livelihoods and rural ways of life.



Cultural



Historic



Tribal



African
American

TPL protects places of historic and cultural importance that keep us in touch with the past and who we are as a people.



Watersheds



Coastal Water



Rivers

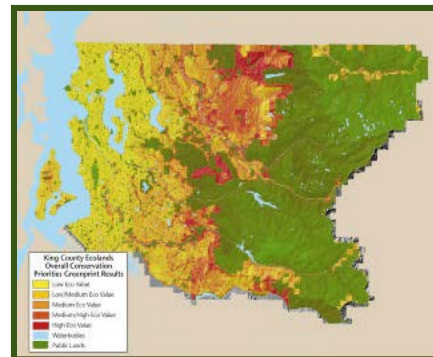


Lakes

TPL preserves lands that protect clean drinking water and the natural beauty of our coasts and waterways.

Conservation Vision *Setting Priorities*

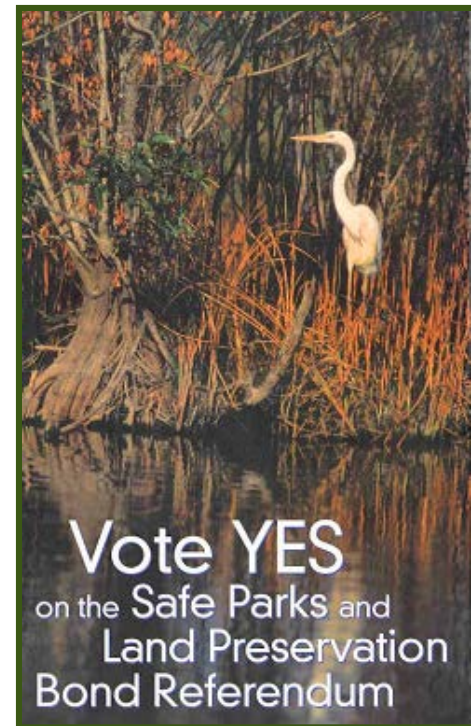
TPL helps agencies and communities define conservation priorities, identify lands to be protected, and plan networks of conserved land that meet public need.



Conservation Finance

Securing Funds

TPL helps agencies and communities identify and raise funds for conservation from federal, state, local, and philanthropic sources.



Conservation Transactions

Protecting Land

TPL helps structure, negotiate, and complete land transactions.

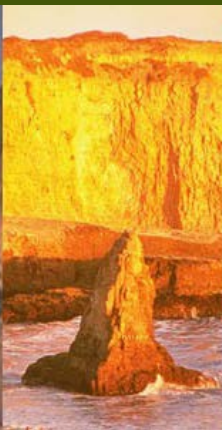


Conservation Research & Education

Improving Practices

TPL acquires and shares knowledge of conservation issues and techniques to improve the practice of conservation, promote its public benefits, and to encourage pro-conservation public policy.

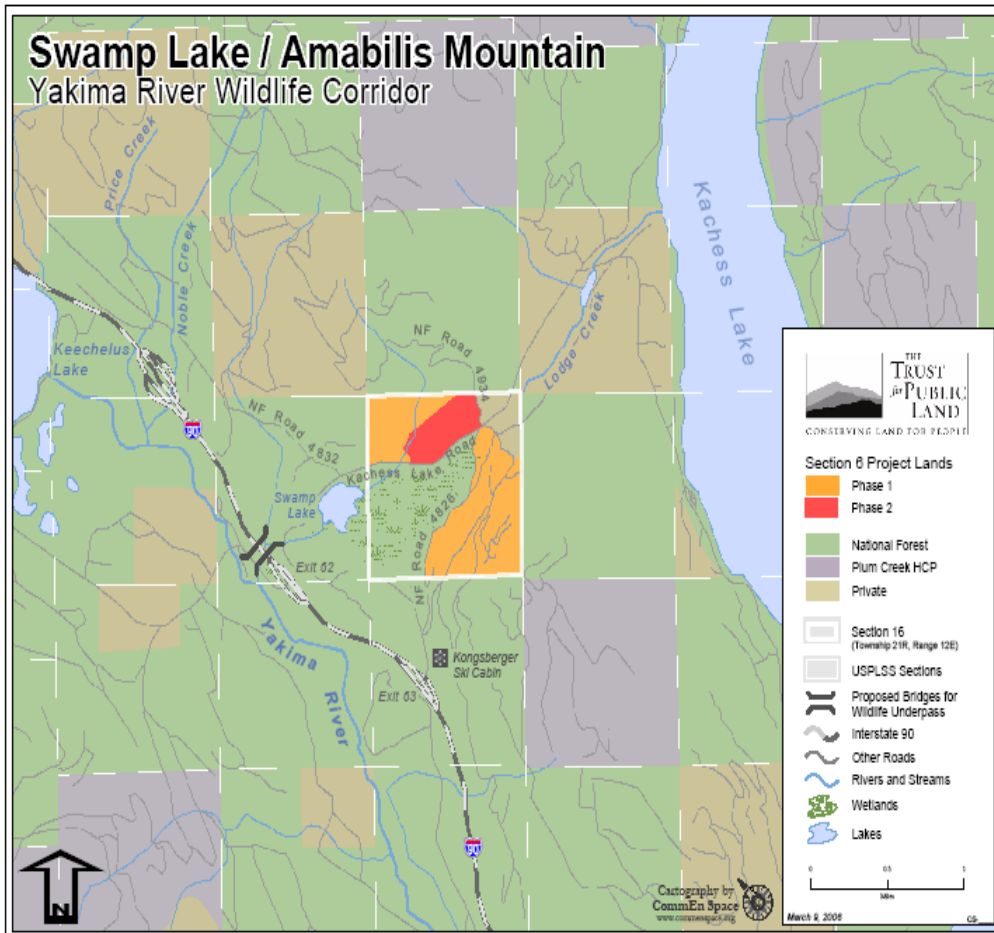




Recent
Work
In
(and around)
the Yakima
Basin

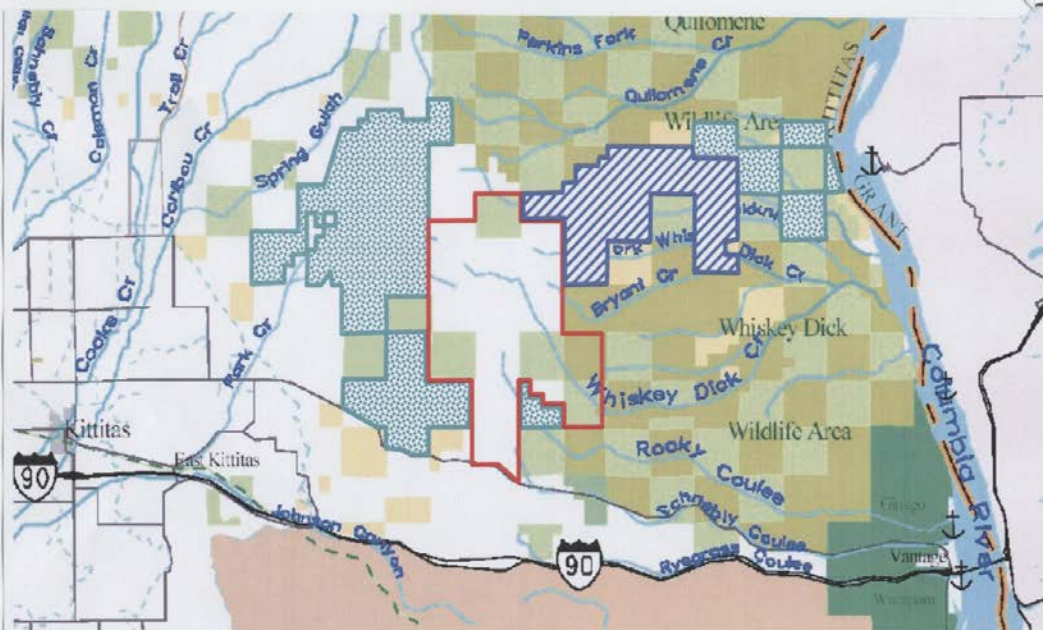


Swamp Lake Conservation Project



- **Assemblage of 299 acres – purchased and held over 3 years**
 - 200 acres in 2004; 15 acres in 2005; 84 in 2006
- **2005 Section 6 HCP Land Acquisition grant**
- **Collaborative Effort:**
 - TPL negotiate and purchase land threatened for conversion
 - DNR seek funding and hold conservation easement
 - CLC own fee land and steward land in perpetuity

Skookumchuck Conservation Project



- 17,500 acres of critical habitat, including elk, sage grouse, ESA-listed steelhead
- Connects two state-owned Fish and Wildlife Areas
- Major recreational uses – hunting, bird watching, hiking, etc.
- Agricultural uses – grazing through CRM
- Adjacent to a Wild Horse Wind Farm

Snow Mountain Ranch



- 1,728-acre ranch outside Yakima
- Preserved 1-mile of salmon and steelhead riparian habitat
- Conserved hundreds of acres of shrub-steppe habitat
- Local land trust owns property and is planning hiking trails on the property
- Senior water rights donated to instream flow use to improve impaired flows in Cowiche Creek
- Piece of 75-mile William O. Douglas Trail

Badger Mountain – Tri-Cities



- Approx. 574 acres
- Unique opportunity to preserve scenic ridgeline, hiking trails, and natural areas
- Opportunity for joint effort with Friends of Badger Mountain, Benton County, City of Richland, and Washington Energy Facilities Site Evaluation Council
- Funding from 3 public sources and private fundraising
- Benton County owns and manages land as park

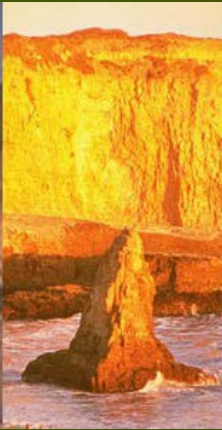


Working with Landowners on Land Deals

- Have patience and creativity
- Get early understanding of landowner expectations – and work to lower them
- Create common agreement on process before initiating process
- Expect that for most landowners, it is BOTH a conservation opportunity and a real estate deal – for many, it is only a real estate deal
- Think beyond the conservation deal to see if there are other ways to help meet the landowners expectations



Questions?





THE
TRUST
for
PUBLIC
LAND

