

Homing patterns of hatchery-reared and wild Yakima River Spring Chinook salmon

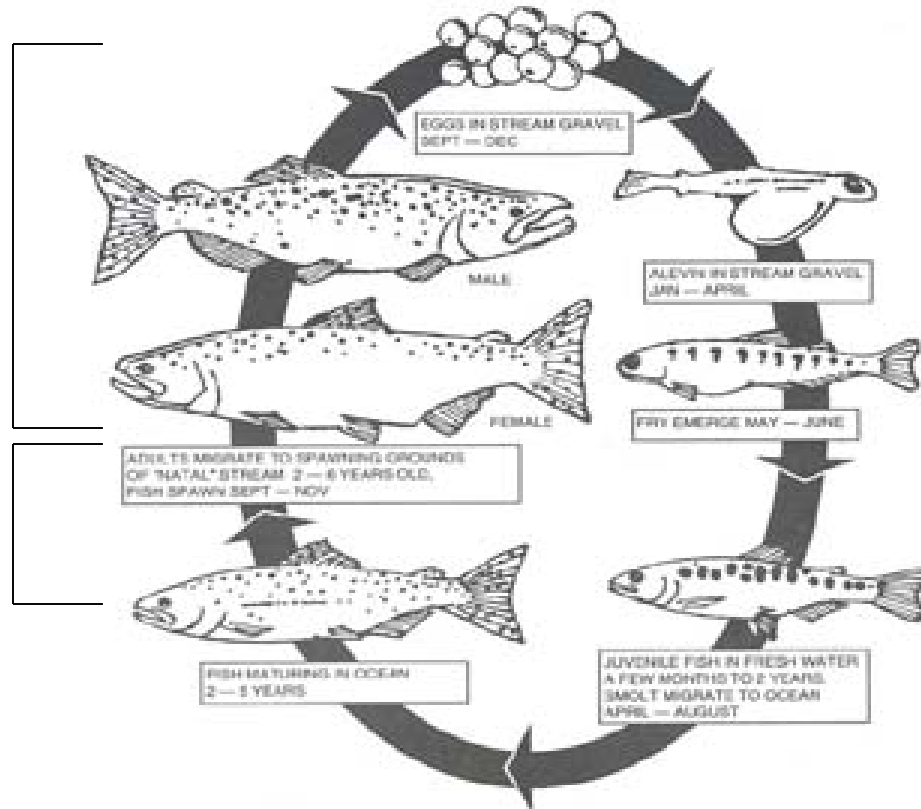
**Andrew Dittman
Donald Larsen
Mary Moser
Darran May
Michelle Havey
Dave Fast
Mark Johnston**



Outline

- Homing and imprinting**
- The role of satellite acclimation facilities in supplementation and salmon recovery**
- The YKFP project**
- Homing patterns of Yakima Spring chinook**

Spring chinook salmon: imprinting and homing



LIFE CYCLE OF CHINOOK SALMON

Homing to the natal site, acclimation site; Spawning site selection; Mate choice

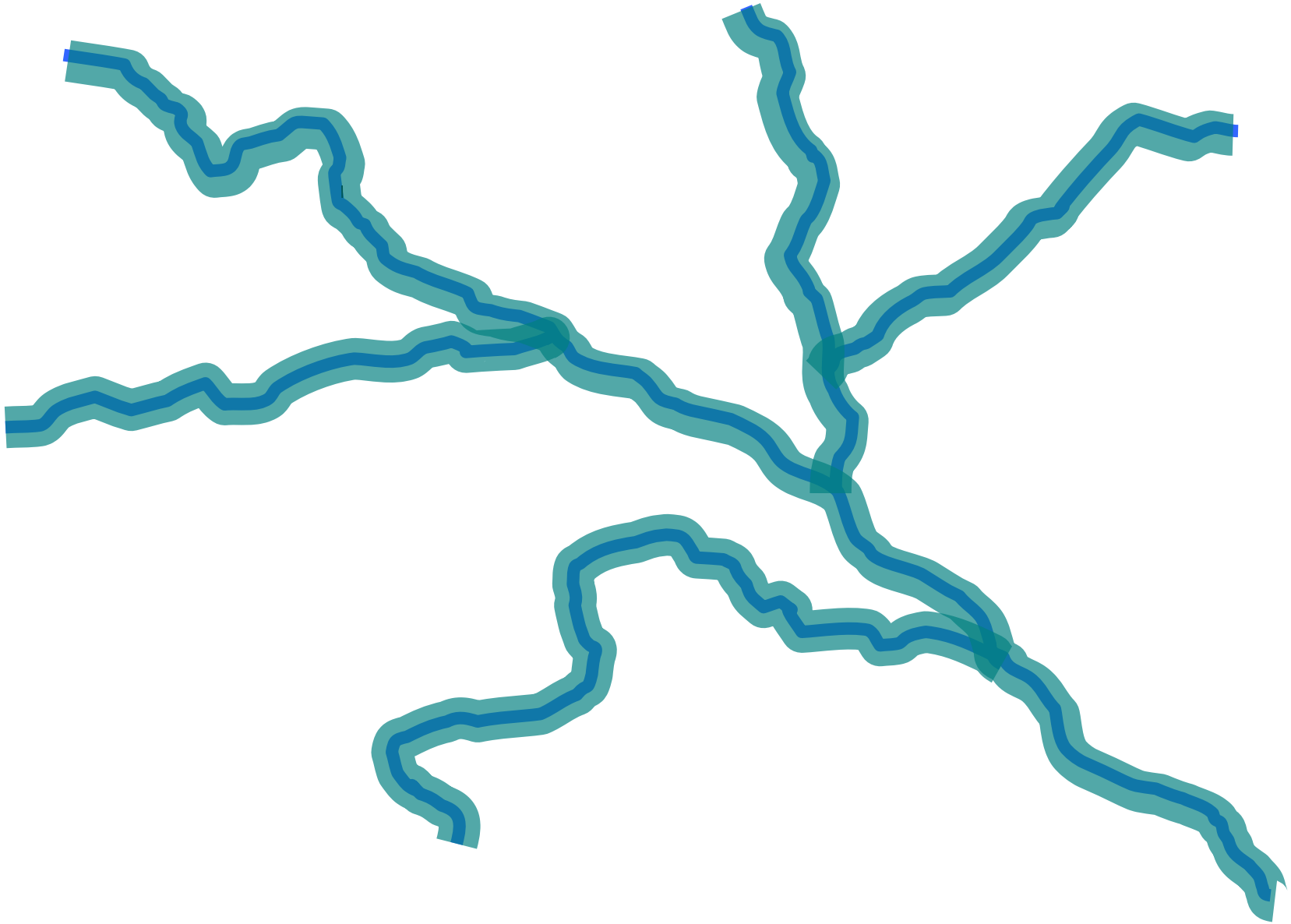
Homing to the natal watershed; holding areas

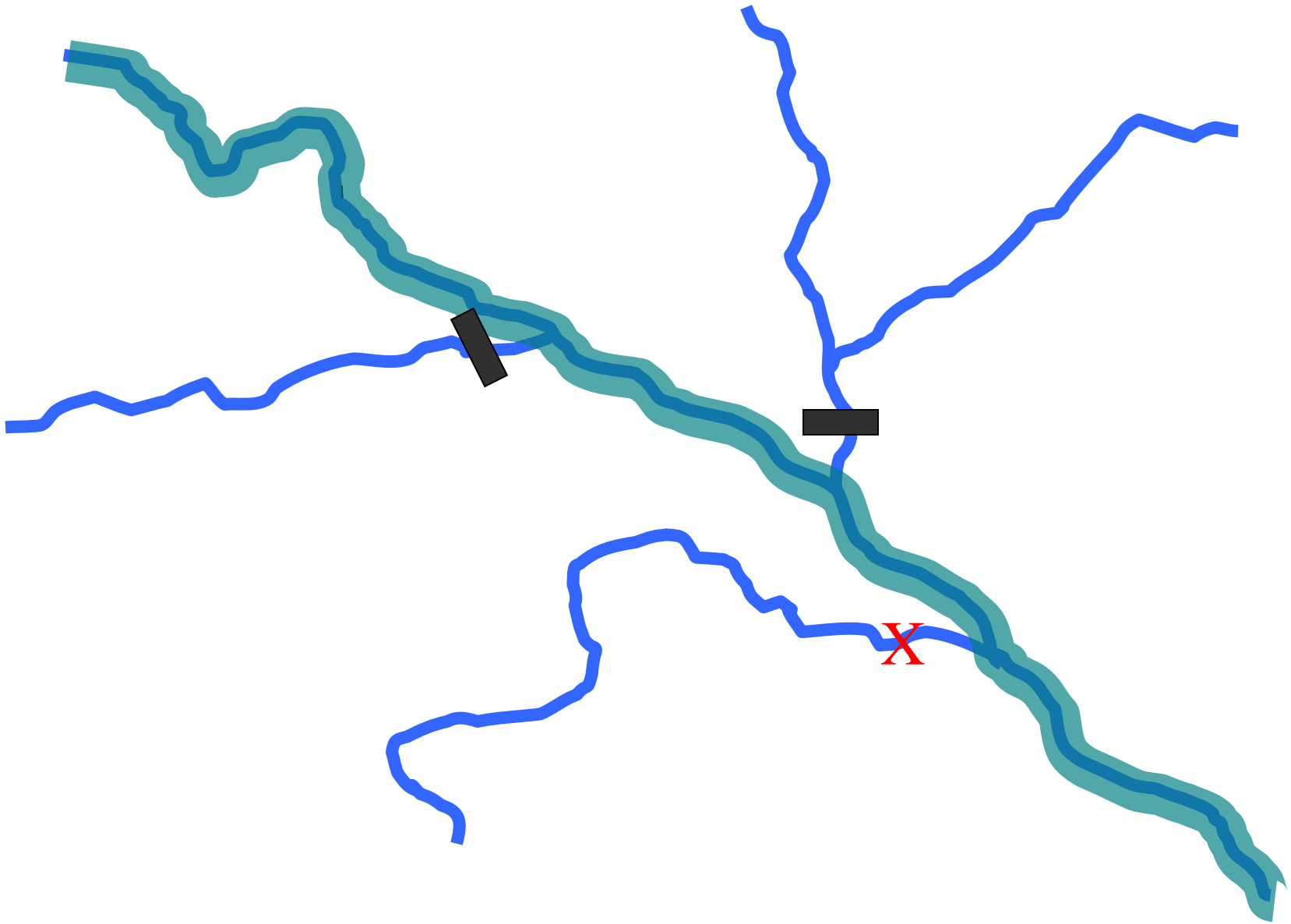
Presumed sensitive periods for imprinting

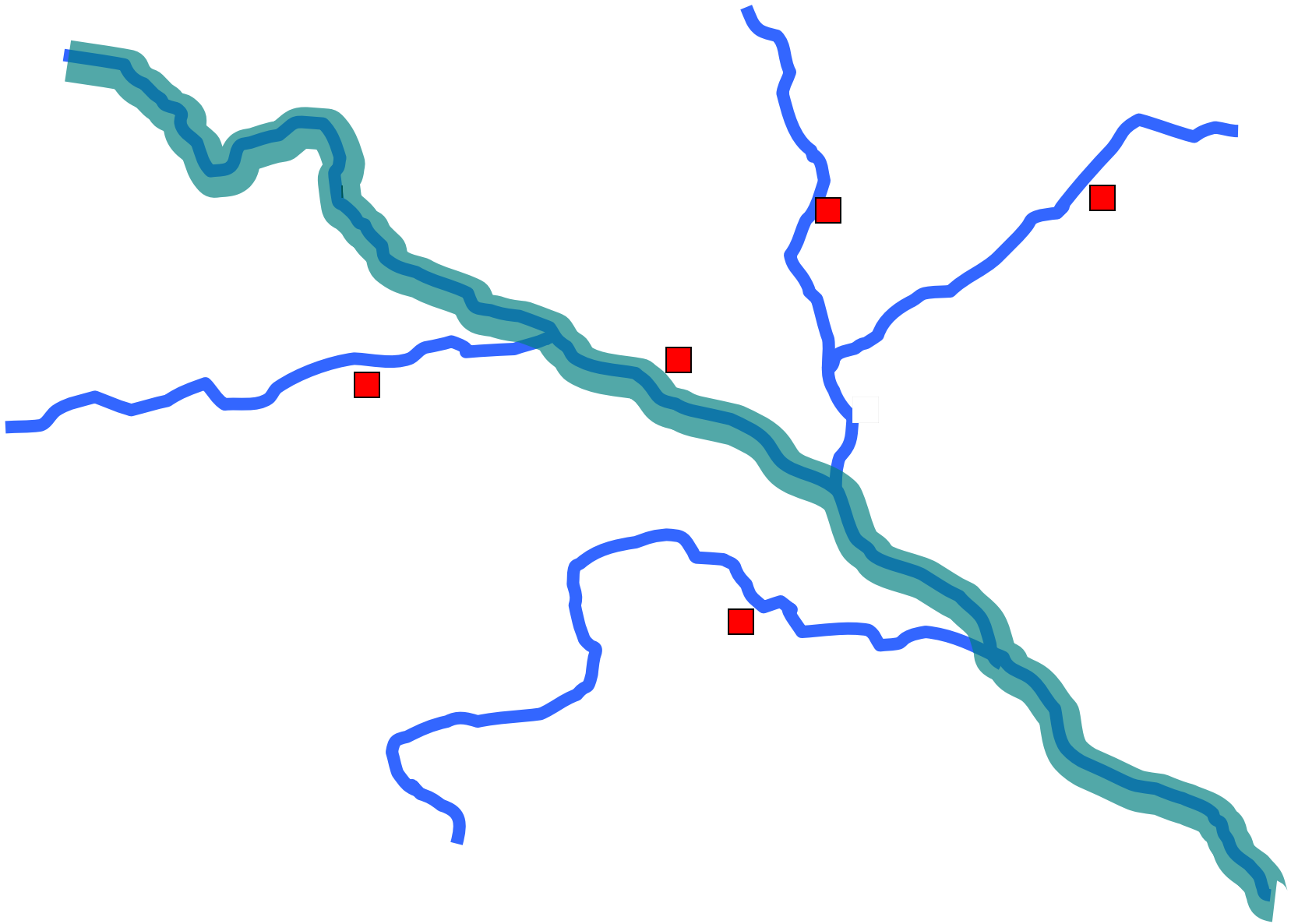
Smolting: sensitive period for imprinting; transfer to acclimation sites

Outline

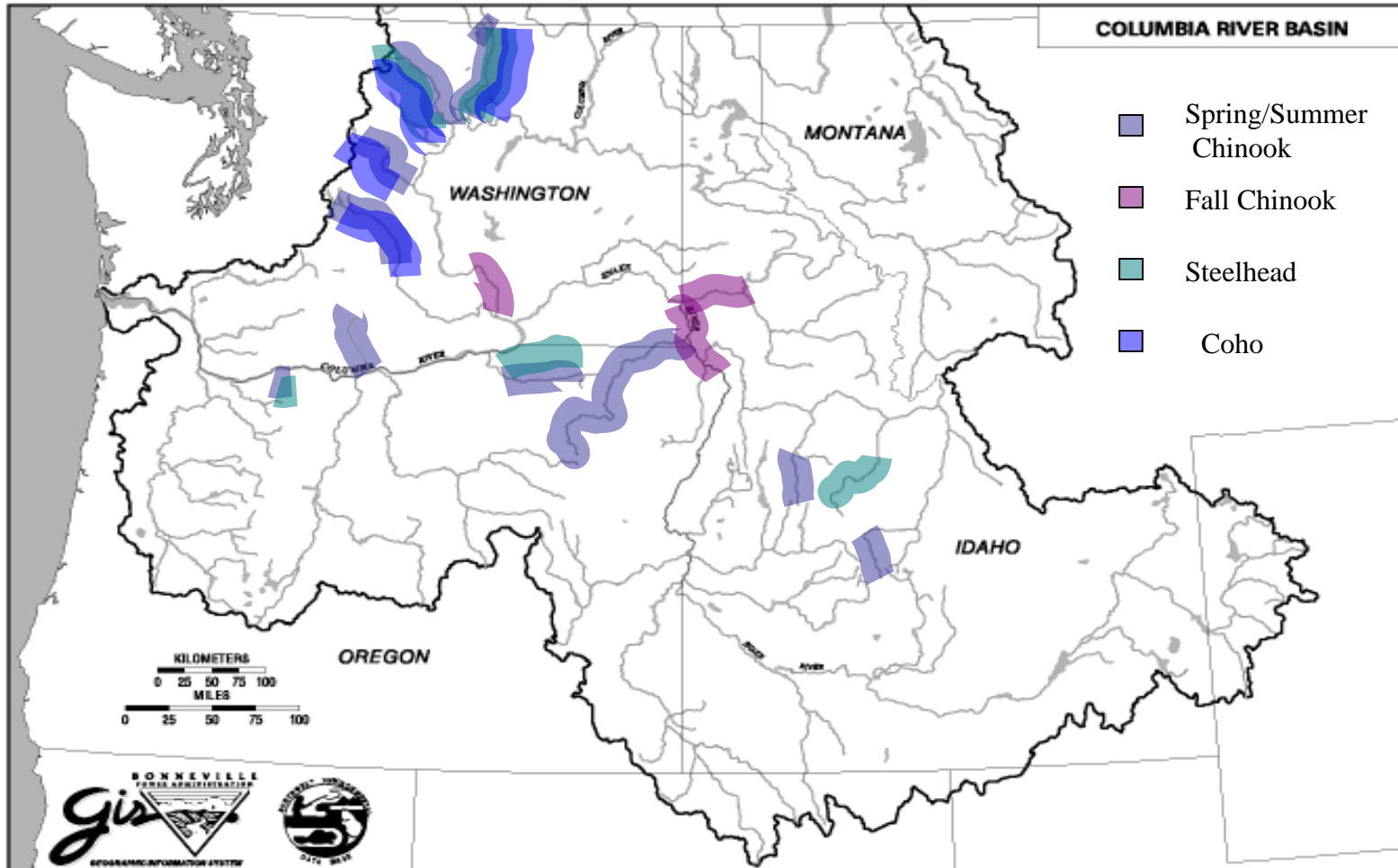
- Homing and imprinting
- The role of satellite acclimation facilities in supplementation and salmon recovery**
- The YKFP project
- Homing patterns of Yakima Spring chinook







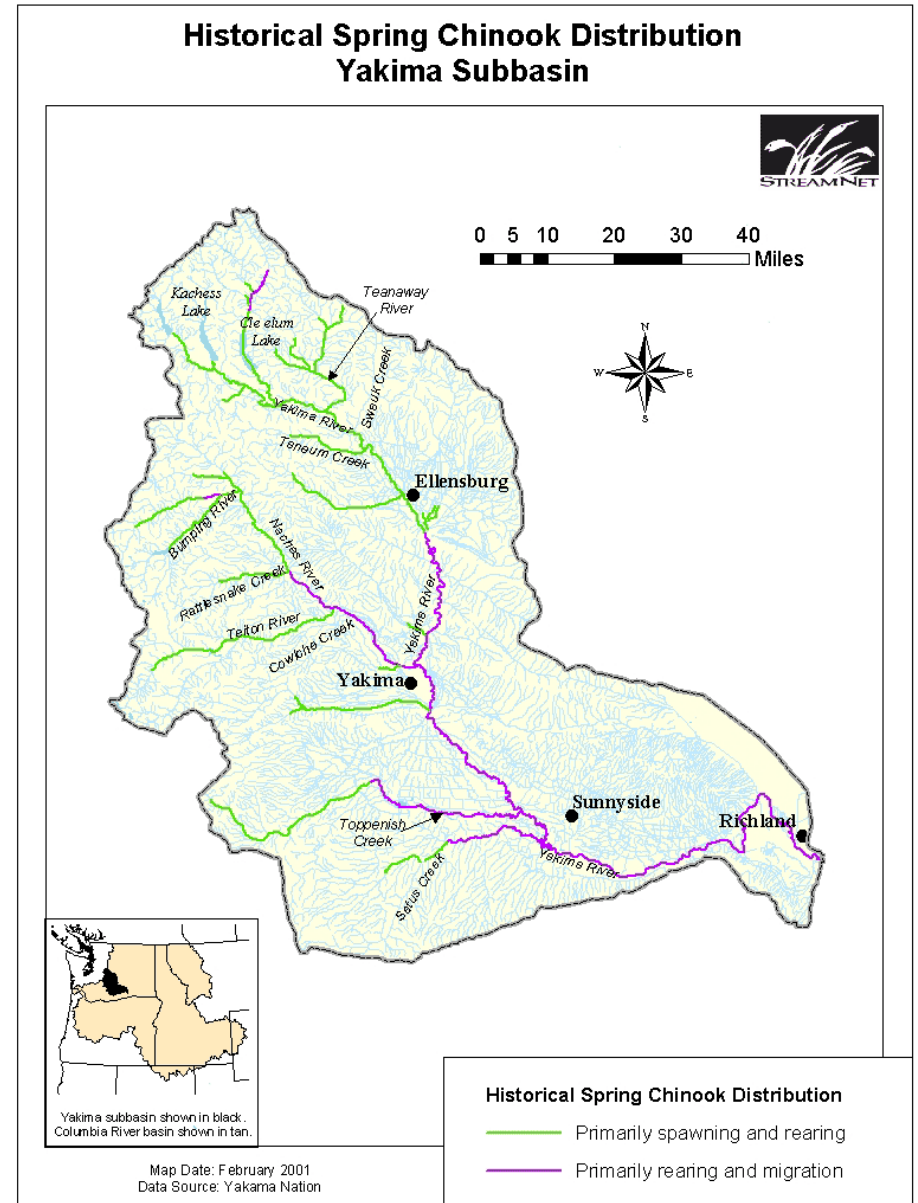
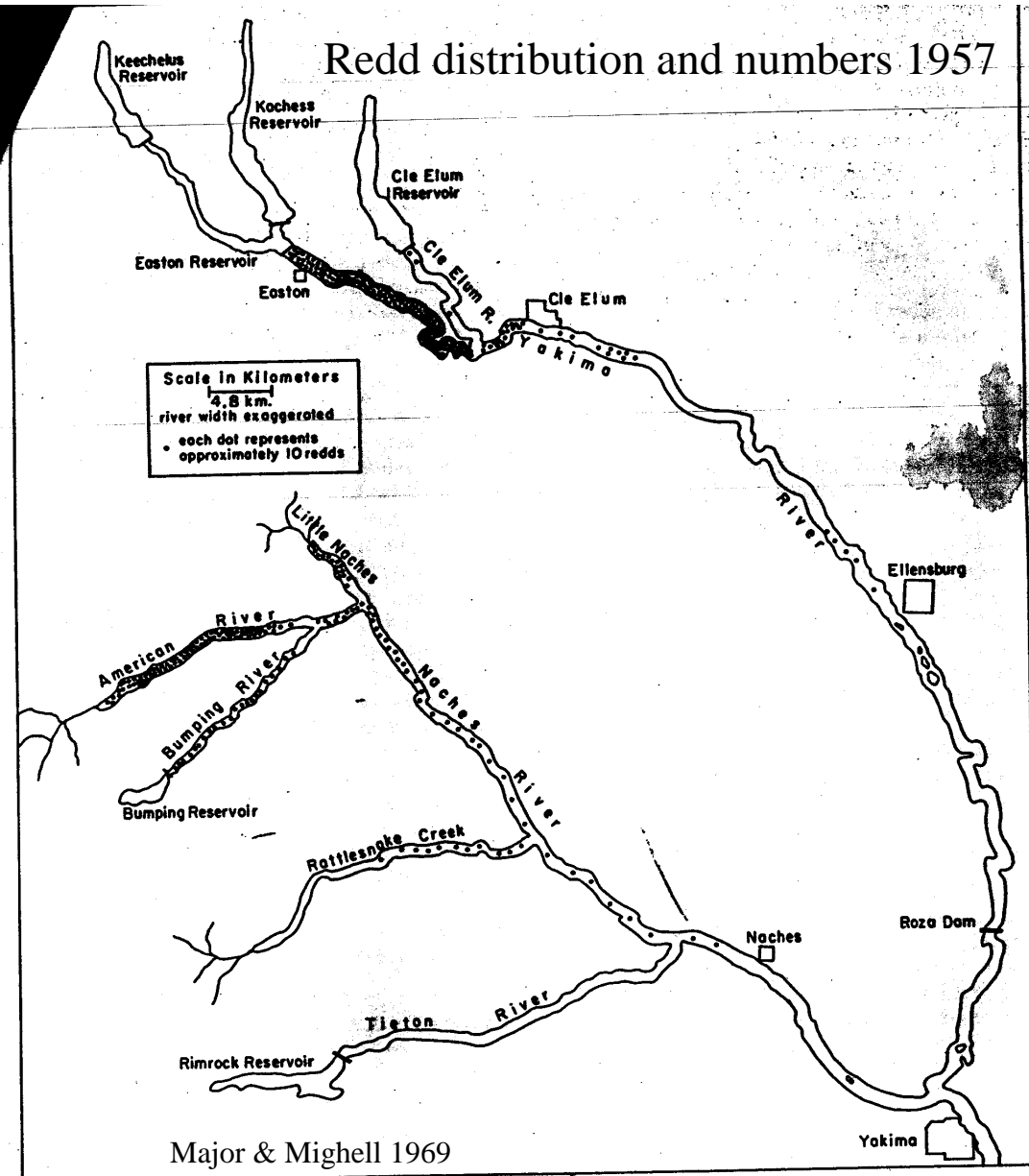
The growing role of acclimation facilities in supplementation programs



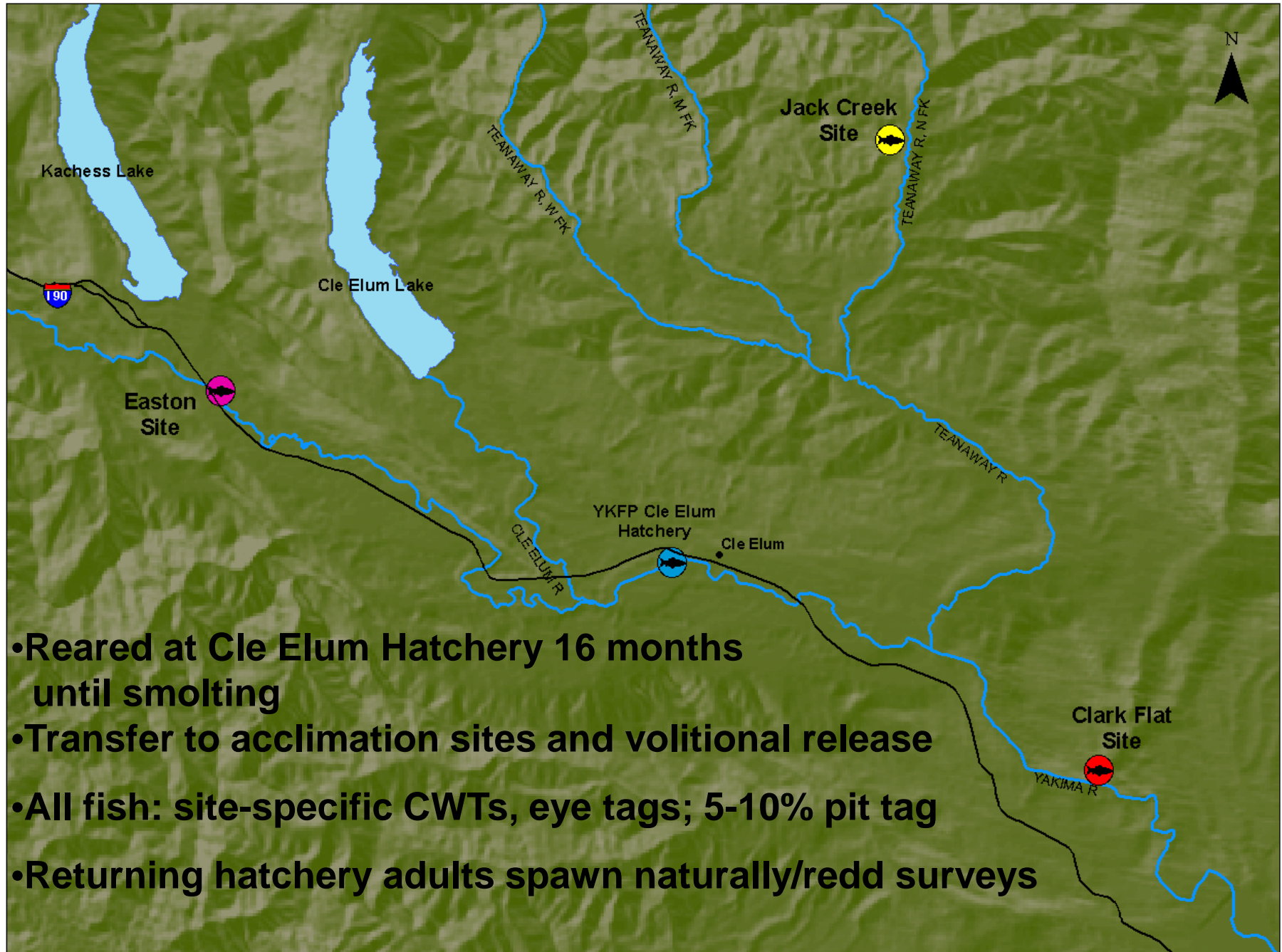
Outline

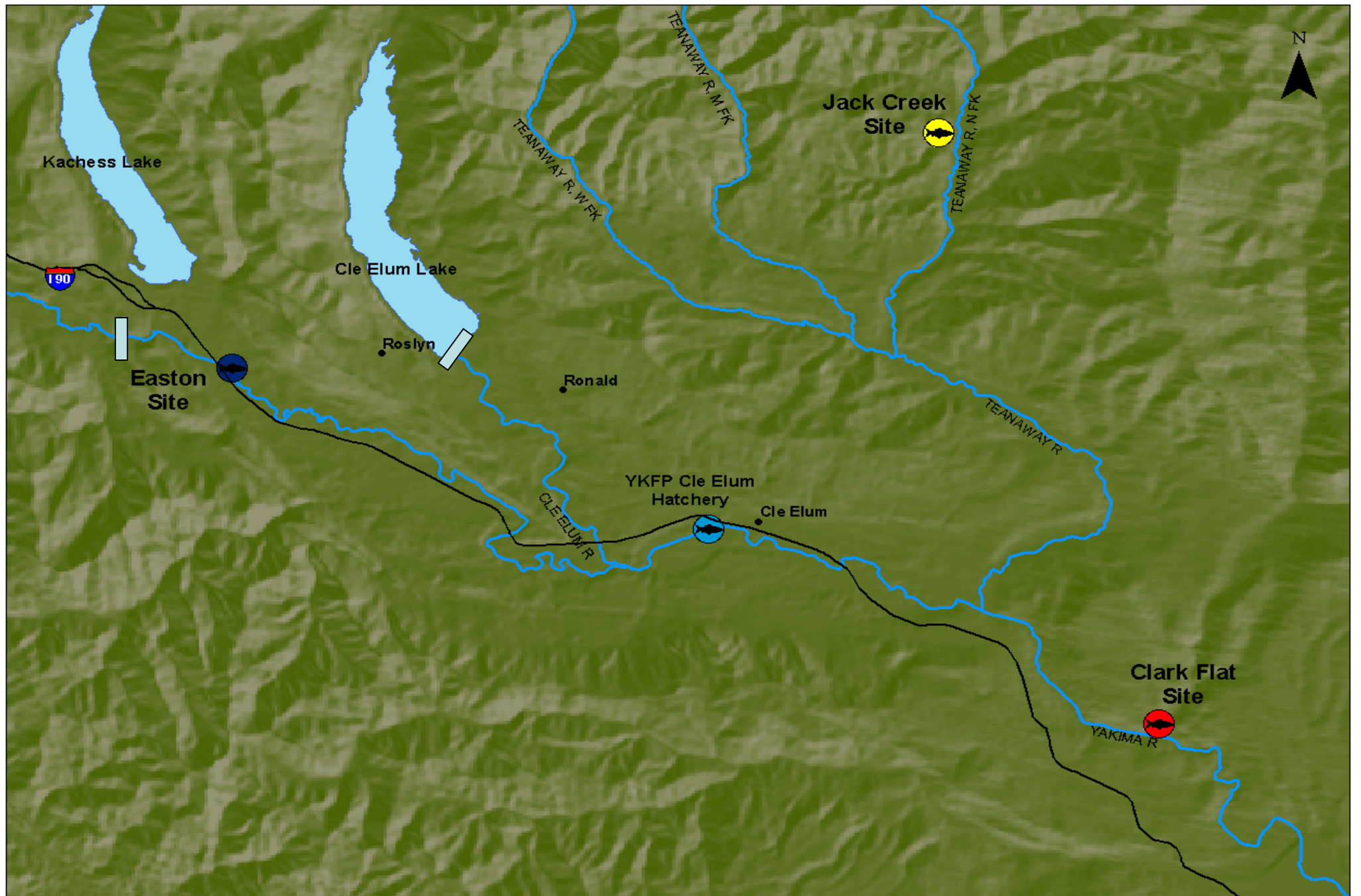
- Homing and imprinting
- The role of satellite acclimation facilities in supplementation and salmon recovery
- The YKFP project**
- Homing patterns of Yakima Spring chinook

Yakima River Spring chinook population

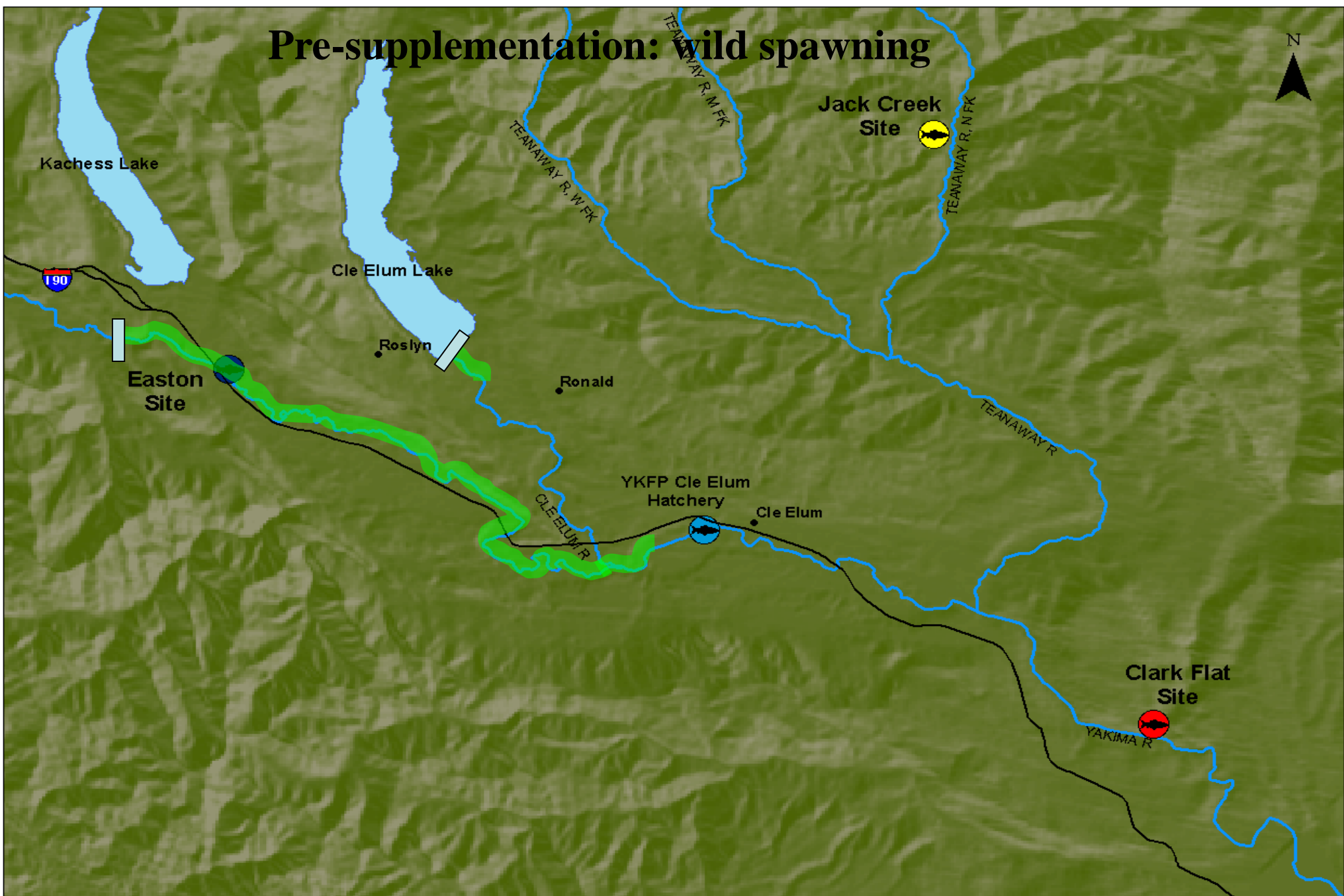


YKFP Spring chinook supplementation research program

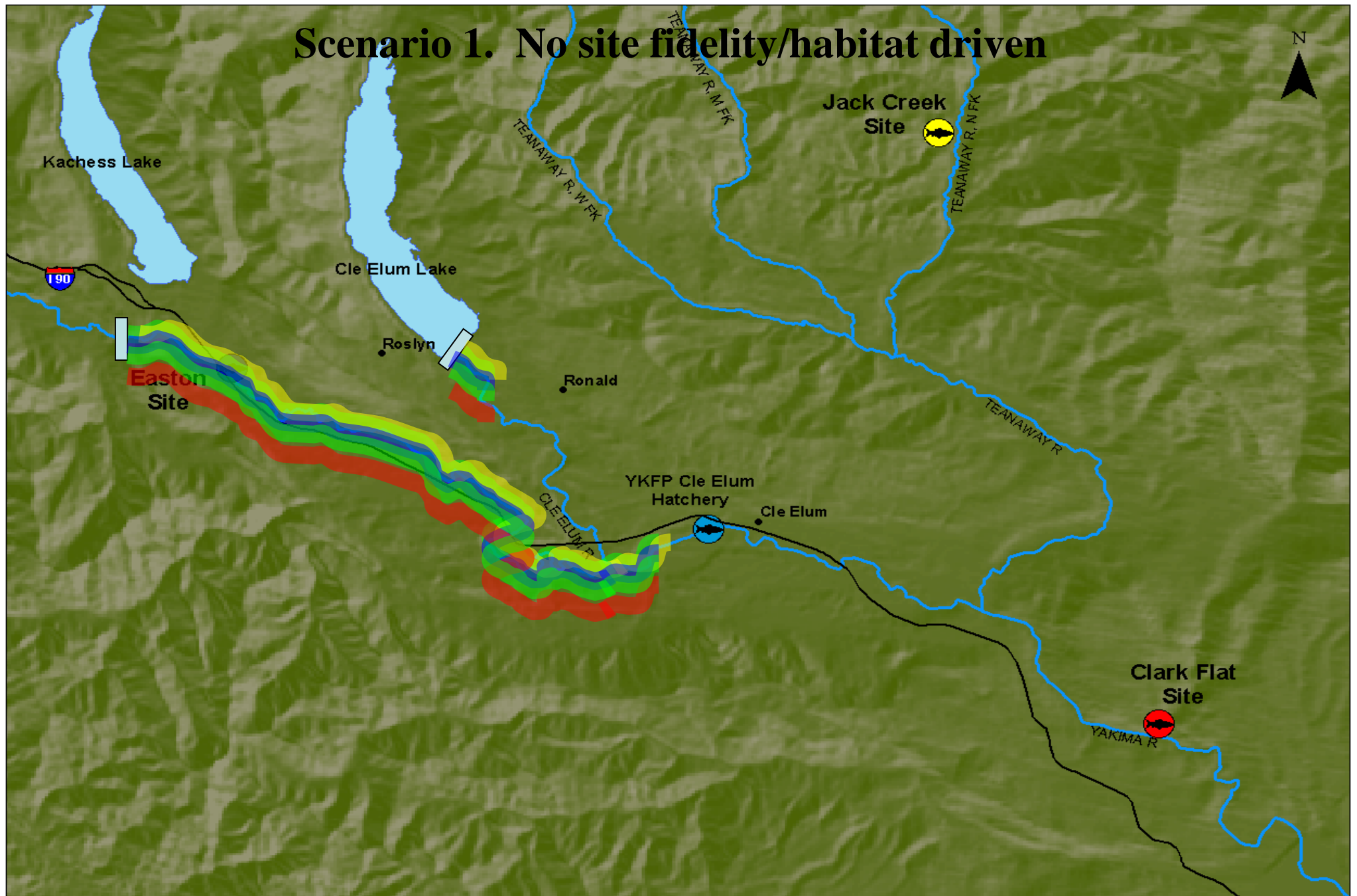




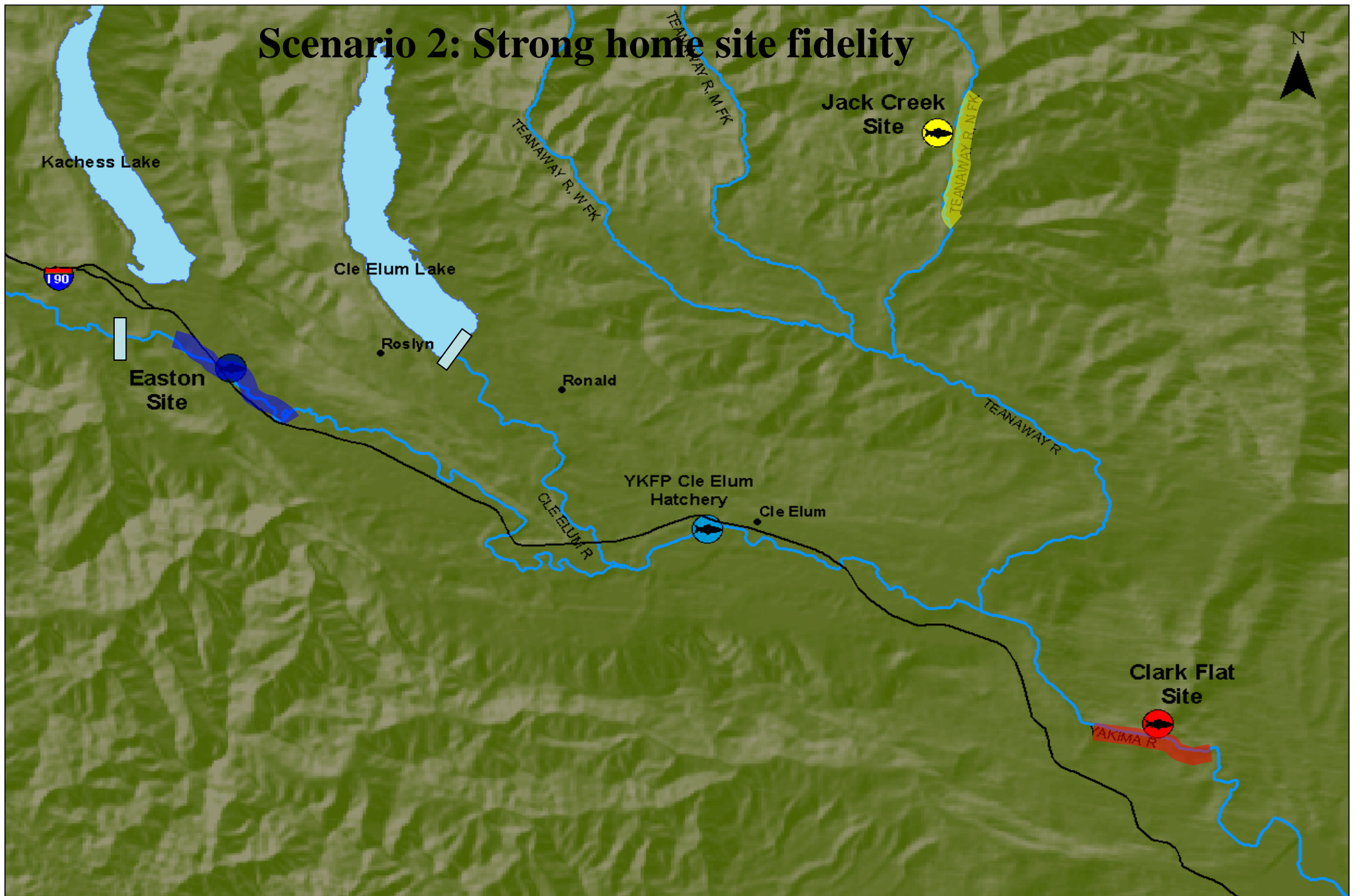
Pre-supplementation: wild spawning



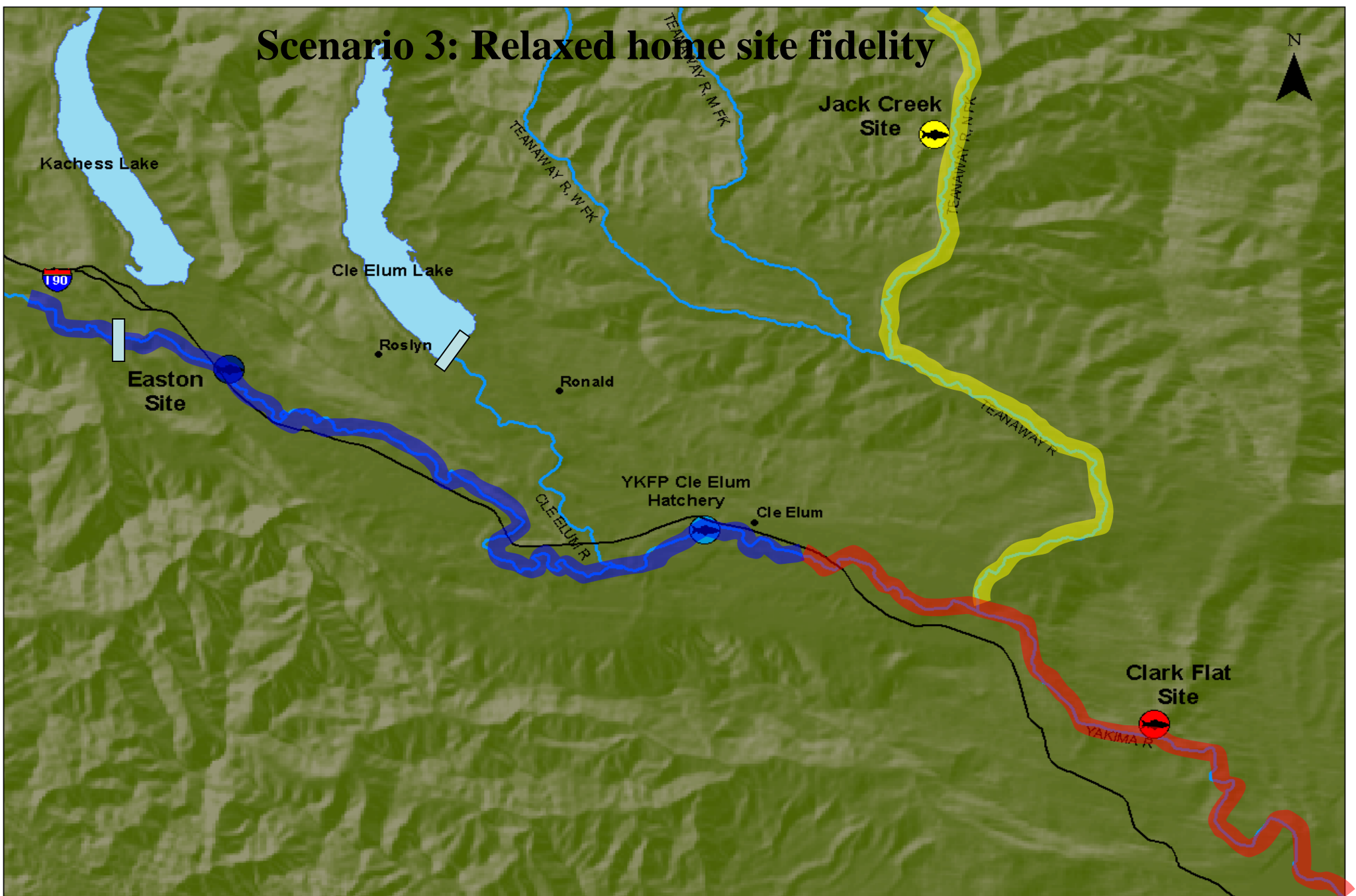
Scenario 1. No site fidelity/habitat driven



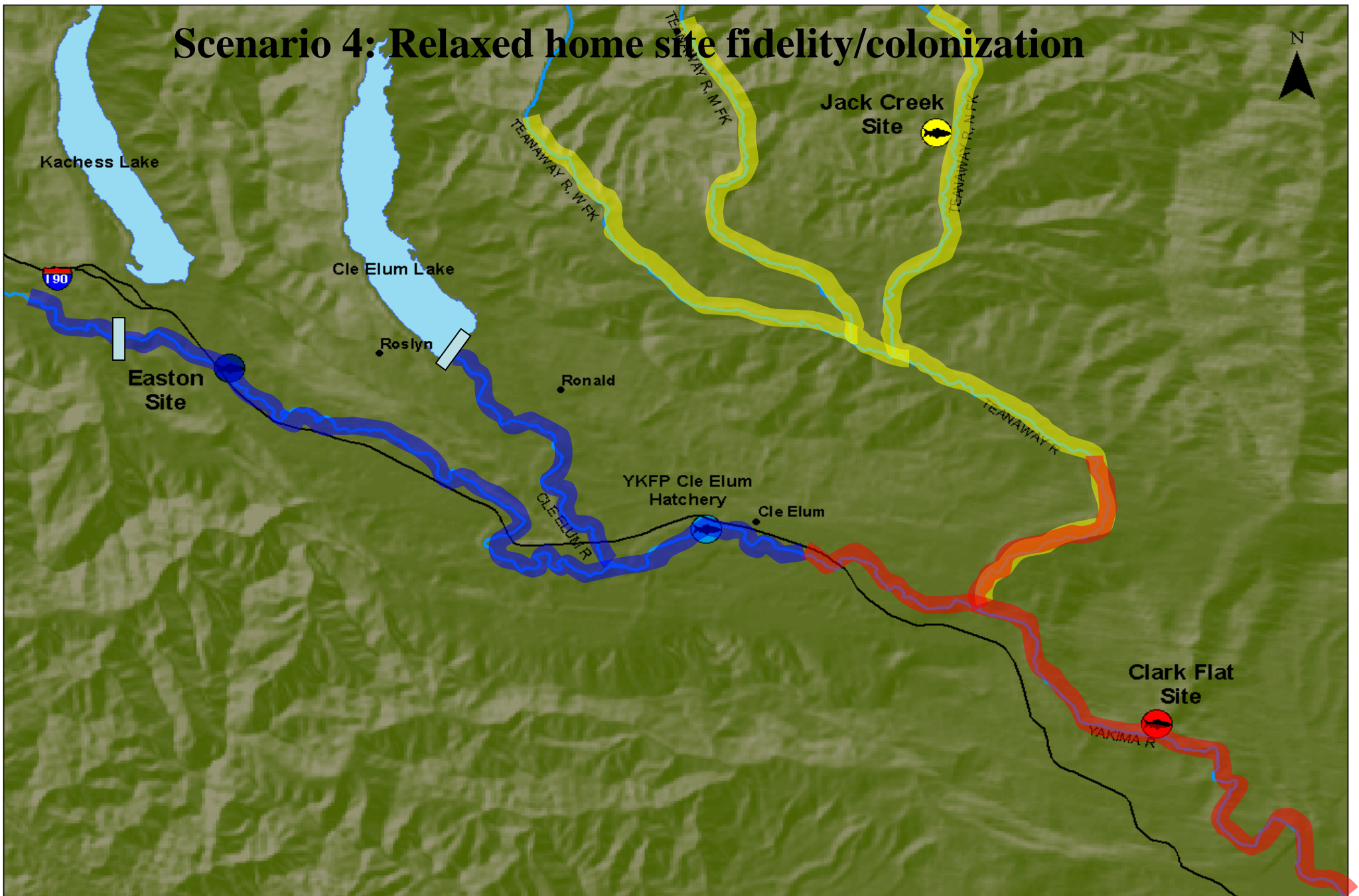
Scenario 2: Strong home site fidelity



Scenario 3: Relaxed home site fidelity



Scenario 4: Relaxed home site fidelity/colonization



Objectives

Identify and compare the spatial and temporal patterns of homing in wild/naturally spawning vs. hatchery-reared fish

- Efficacy of Acclimation**
- Recolonization of underutilized habitat**
- Wild vs. Hatchery**
- Pre- vs. post supplementation**

Methods

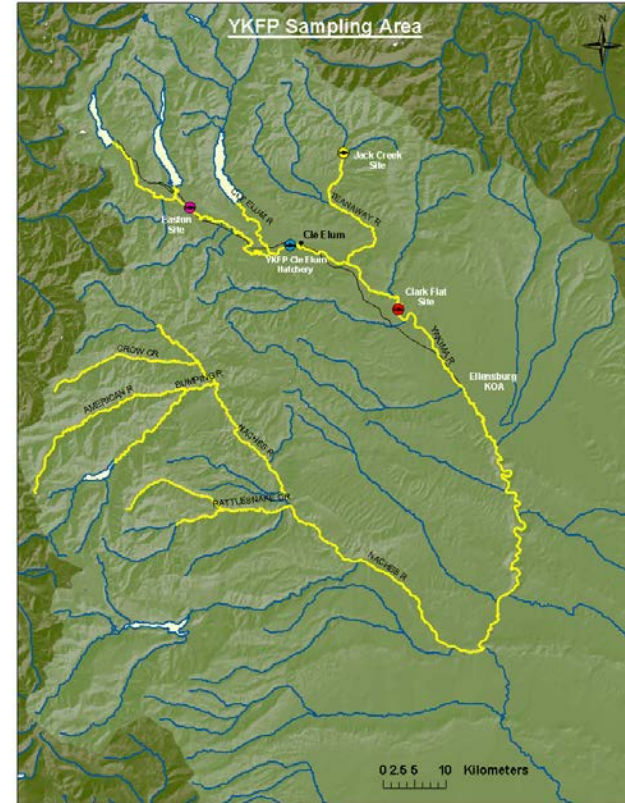
Comprehensive surveys of upper Yakima Basin

Carcasses

- GPS location (3 m accuracy); date
- hatchery/wild
- male/female; jack, precocious
- length, scale
- tag location, recovery
- egg retention; disease
- dna, otolith
- carcass mark/recapture
- goo factor

Redds

- Yakima biologists survey and flag (color coded by date) all redds in upper Yakima
- GPS mapping of all redds in the upper Yakima at end of spawning season

















10-19-02
#1

10-19-02
#1

10-19-02
#1

10-19-02
#1



Results

Wild vs. Hatchery

Efficacy of Acclimation

Carcass % recovery rates

	2002	2003	2004
Total	2112/8091(26.1)	655/3258 (20.1)	3025/10187 (31.9)
Hatchery Adults	1508/6112 (24.7)	337/1036 (32.5)	935/2876 (32.5)
Wild Adults	395/1820 (21.7)	107/394 (27.2)	1909/6436 (29.7)
Hatchery Jacks	9/71 (12.6)	146/1105 (7.6)	33/204 (16.2)
Wild Jacks	3/89 (3.4)	57/723 (7.8)	73/671 (10.9)

Carcass survey data summary

2002

	Male	Female	Jack	MJ/PP
Hatchery	530 (34.9) (35.1)	978 (64.4) (64.9)	9 (0.6)	1(0.1)
Wild	169 (42.5) (42.8)	226 (56.8) (57.2)	3 (0.7)	0

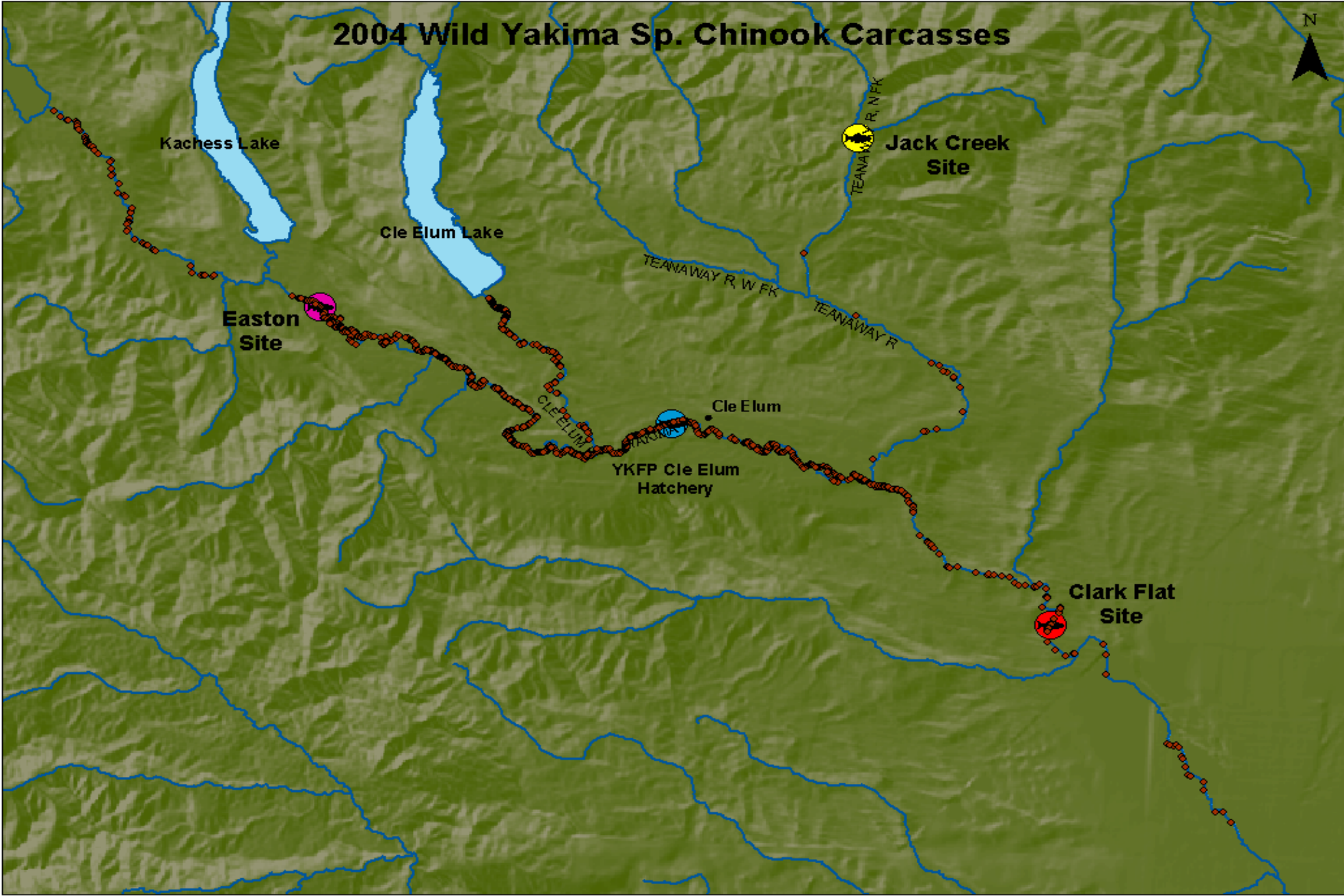
2003

	Male	Female	Jack	MJ/PP
Hatchery	119 (24.6) (35.3)	218 (45.1) (64.7)	146 (30.3)	0
Wild	51 (31.1) (47.7)	56 (34.1) (52.3)	57 (34.8)	0

2004

	Male	Female	Jack	MJ/PP
Hatchery	362 (37.6) (39.0)	567 (58.9) (61.0)	33 (3.4)	1(0.1)
Wild	871 (44.0) (45.8)	1032 (52.1) (54.2)	73 (3.7)	3(0.2)

2004 Wild Yakima Sp. Chinook Carcasses



Kachess Lake

Cle Elum Lake

Easton Site

YKFP Cle Elum Hatchery

Jack Creek Site

Clark Flat Site

TEANAWAY R, NEK

TEANAWAY R, W FK

TEANAWAY R

Cle Elum

CLEELUM

2004 Hatchery Yakima Sp. Chinook Carcasses



Kachess Lake

Cle Elum Lake

Jack Creek Site

Easton Site

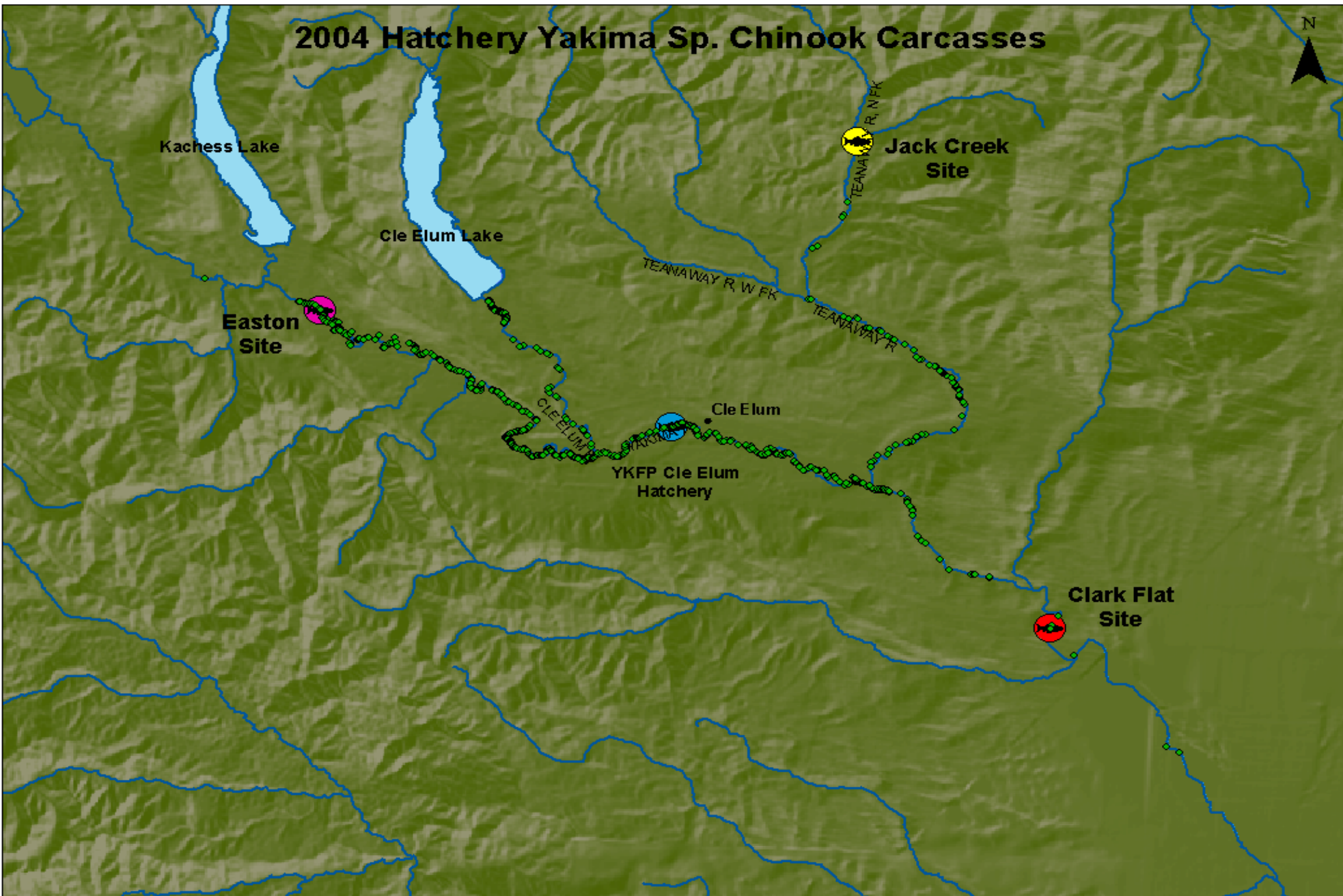
TEANAWAY R, W FK

TEANAWAY R

Cle Elum

YKFP Cle Elum Hatchery

Clark Flat Site

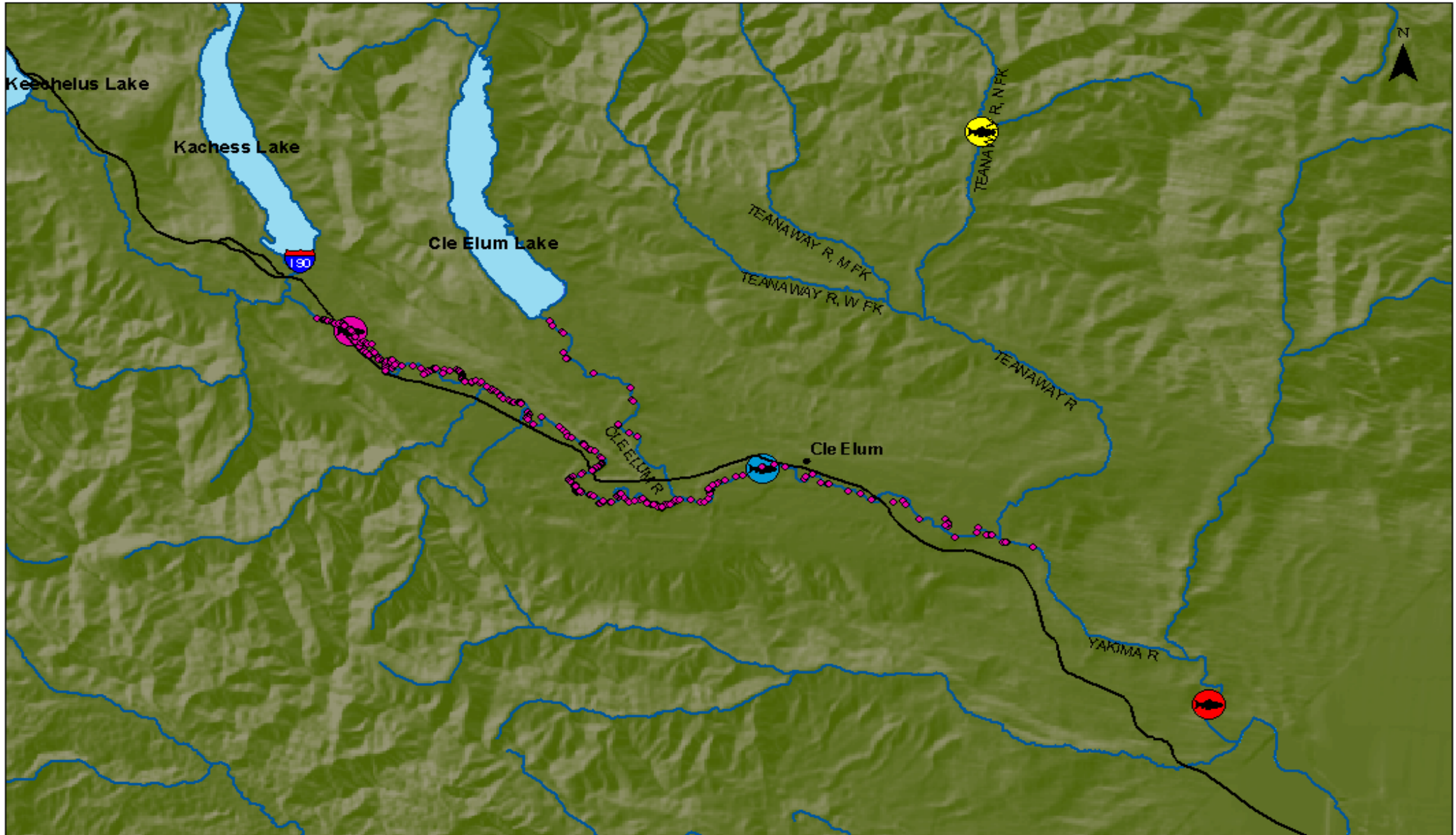


Results

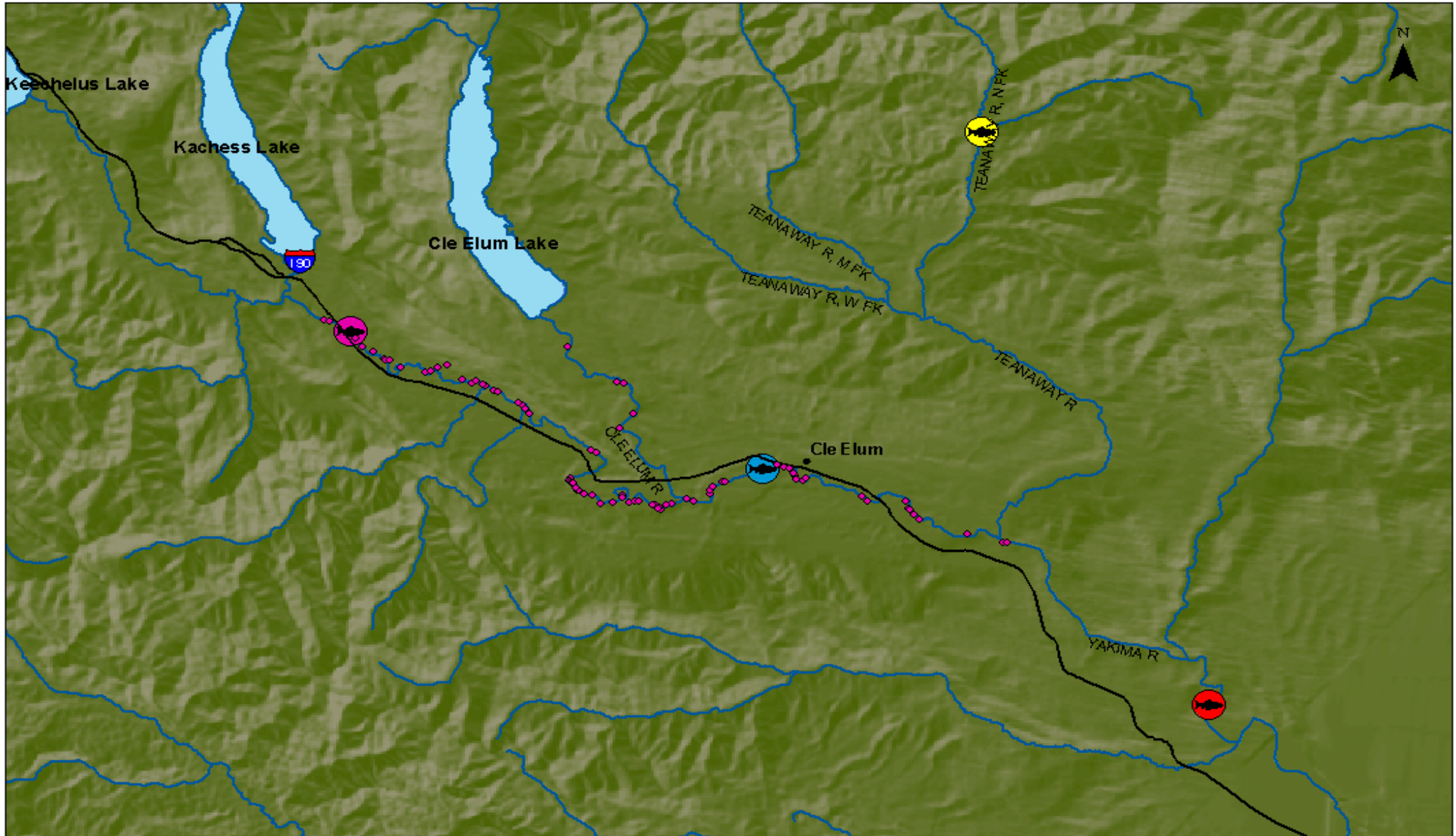
Wild vs. Hatchery

Efficacy of Acclimation

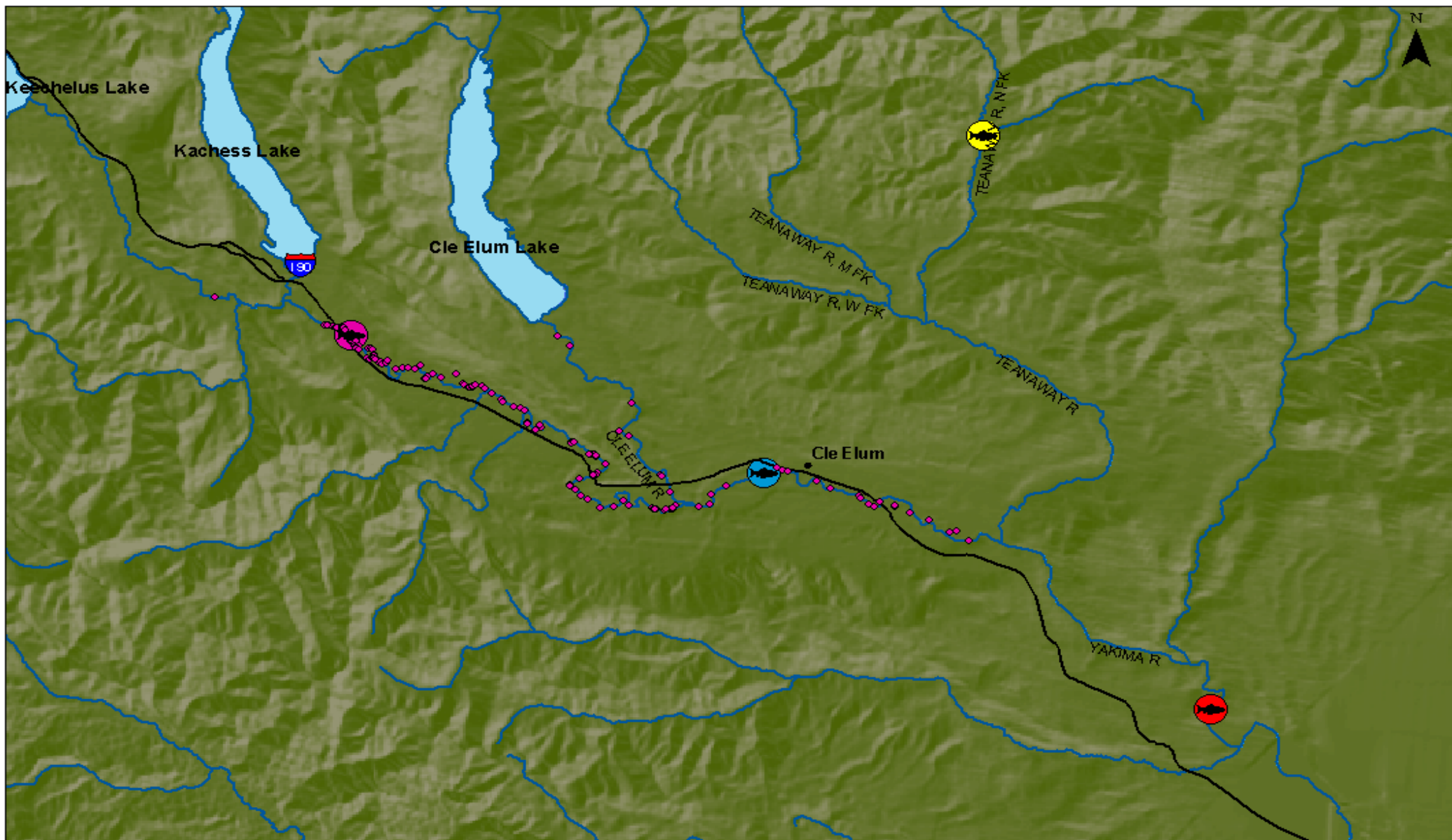
Easton 2002



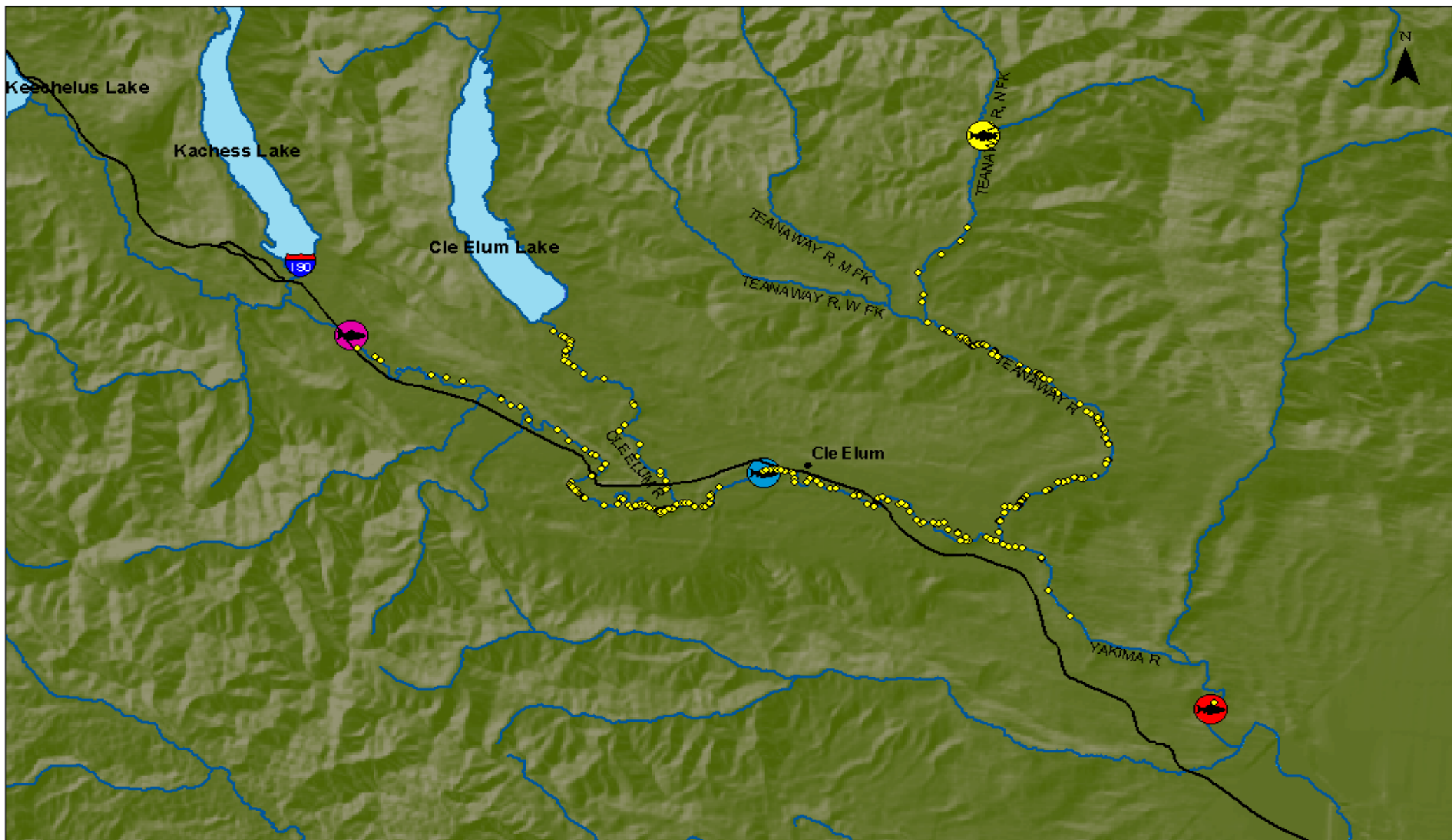
Easton 2003



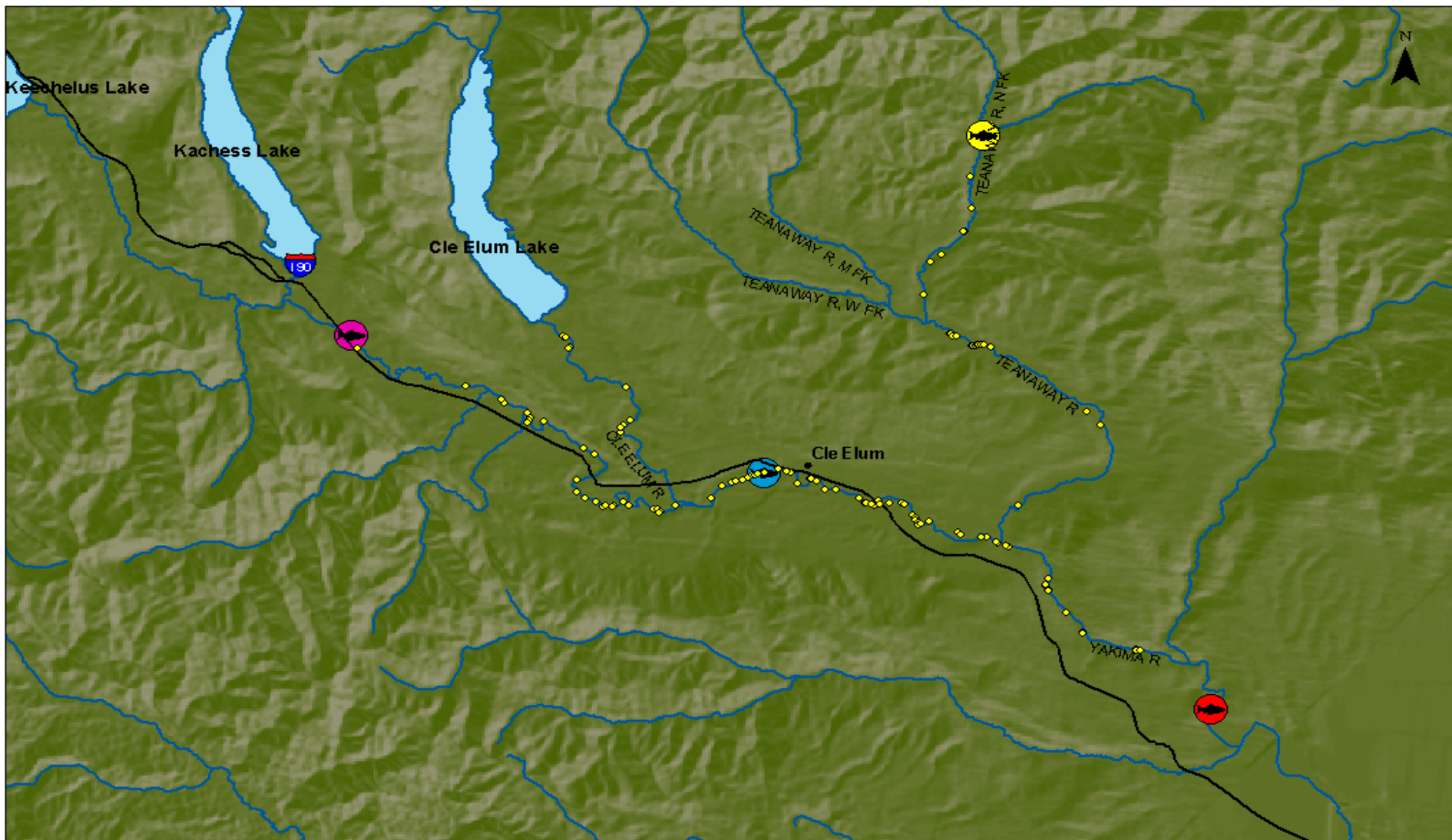
Easton 2004



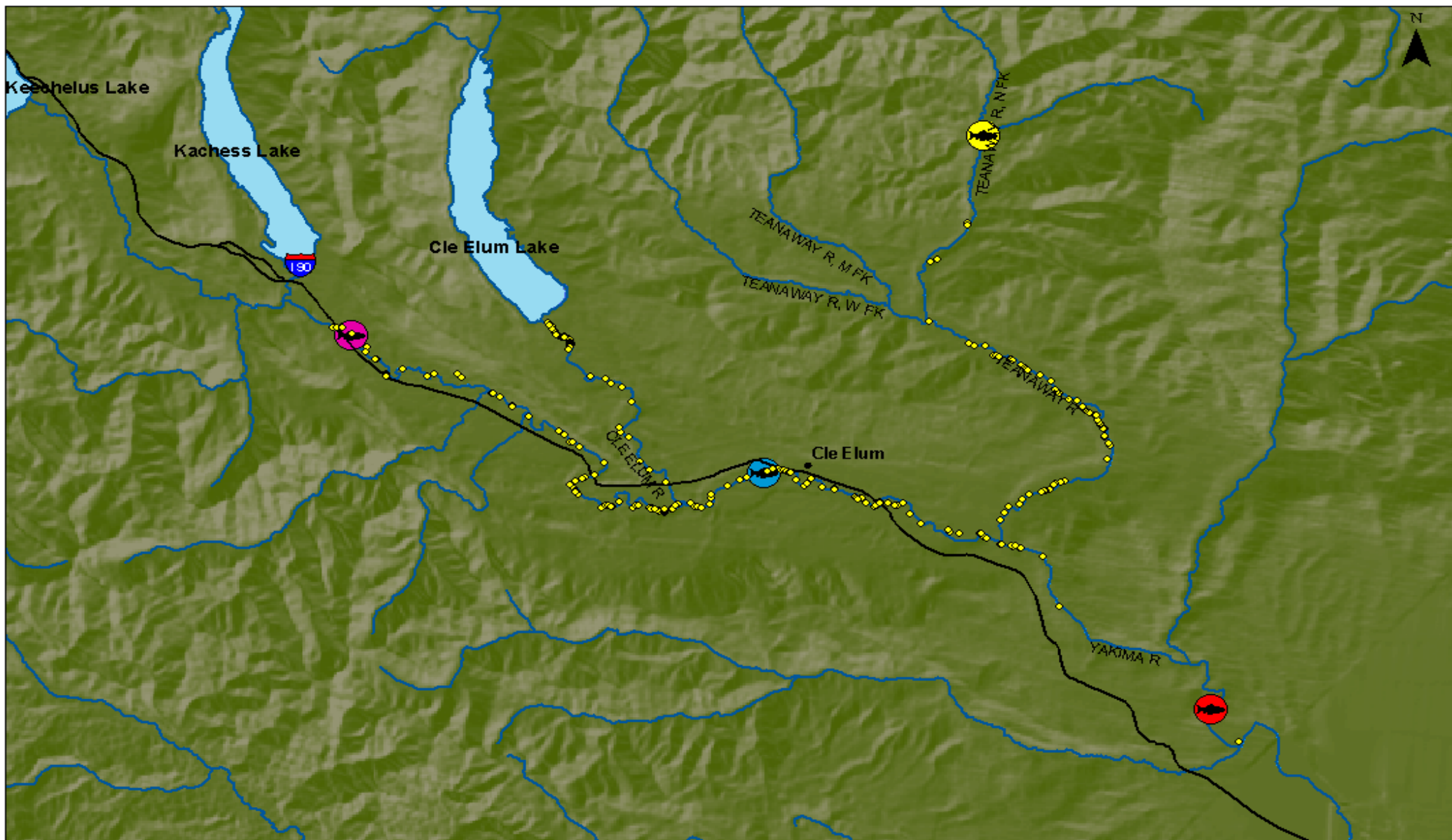
Jack Creek 2002



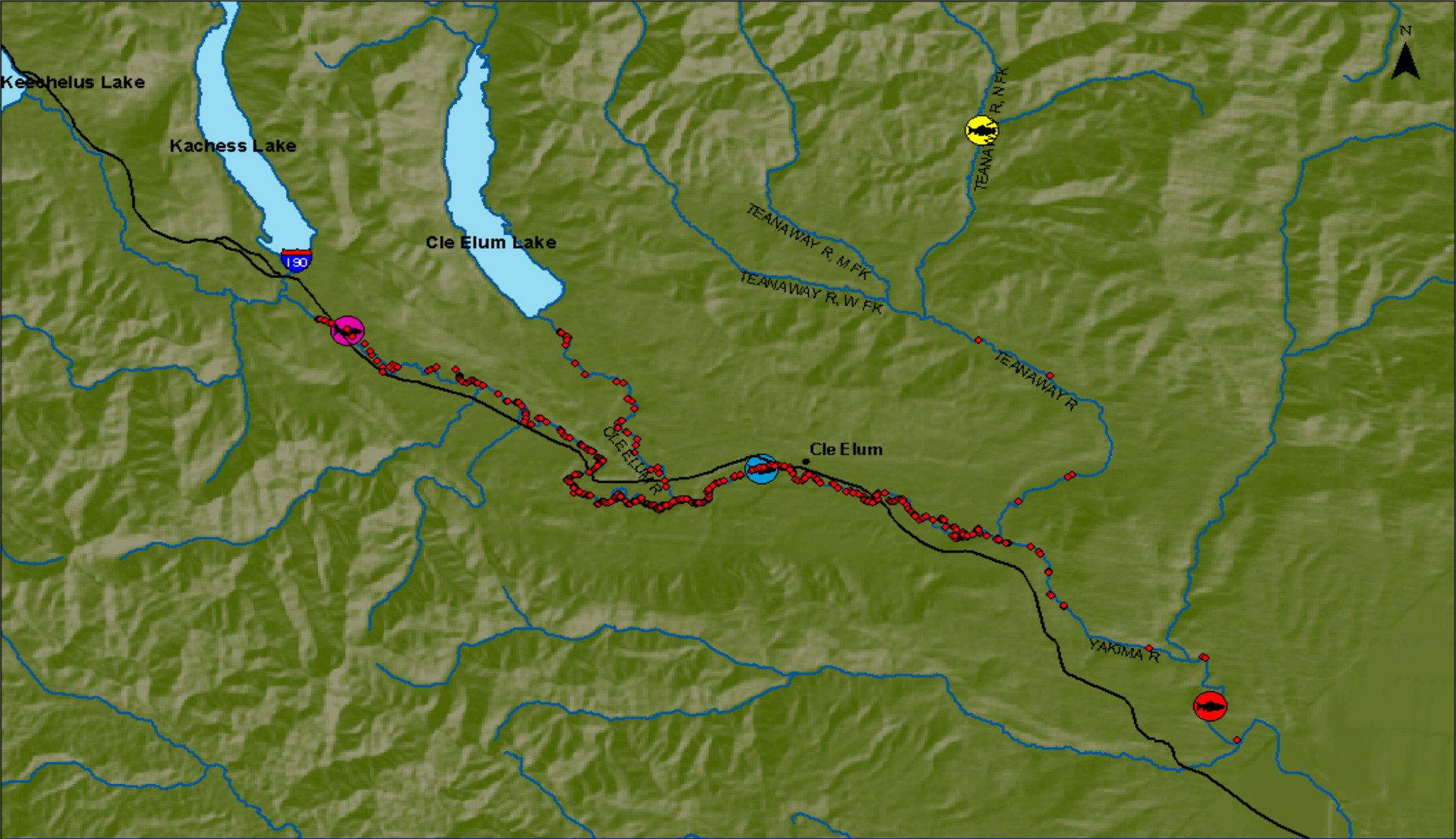
Jack Creek 2003



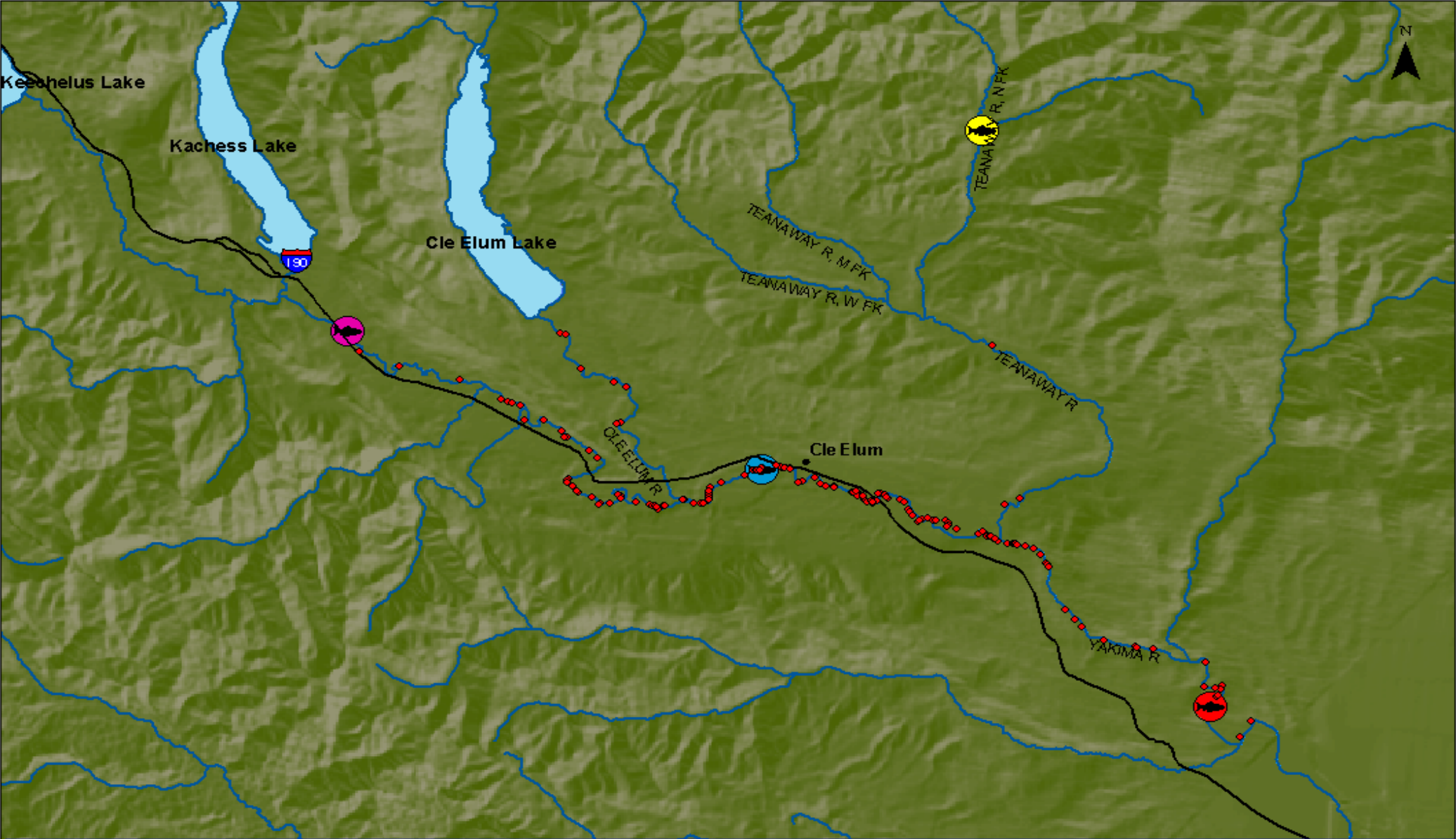
Jack Creek 2004



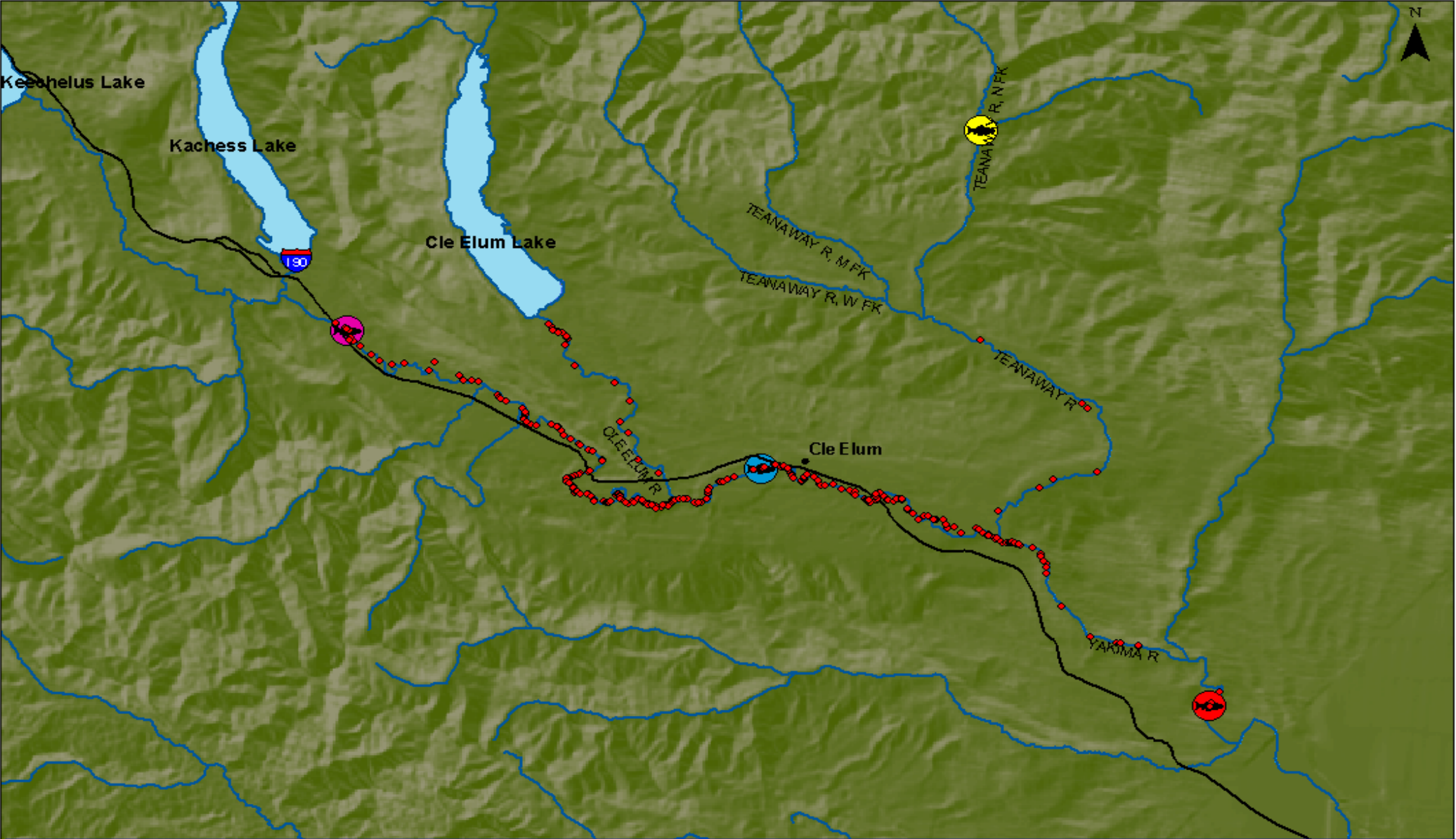
Clark Flat 2002



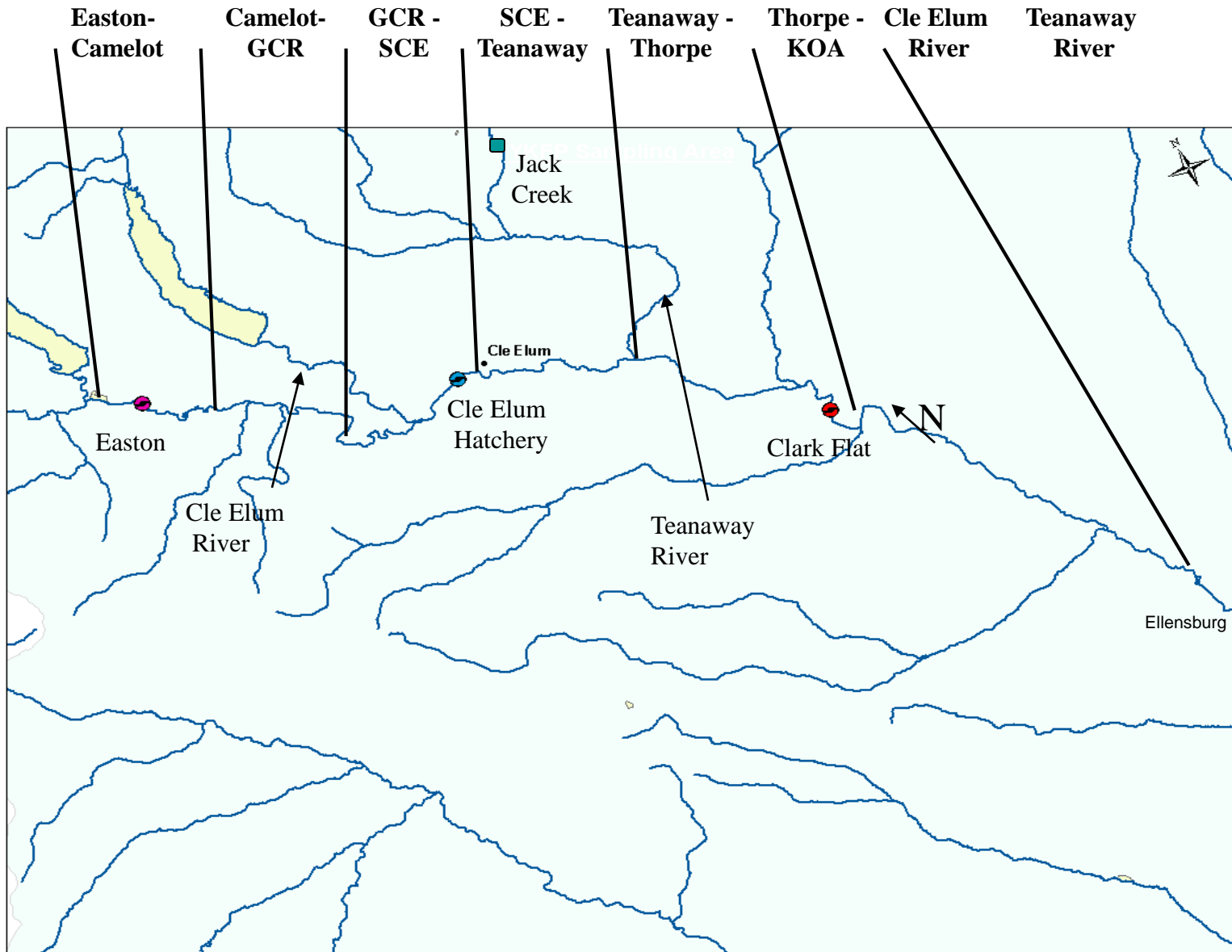
Clark Flat 2003

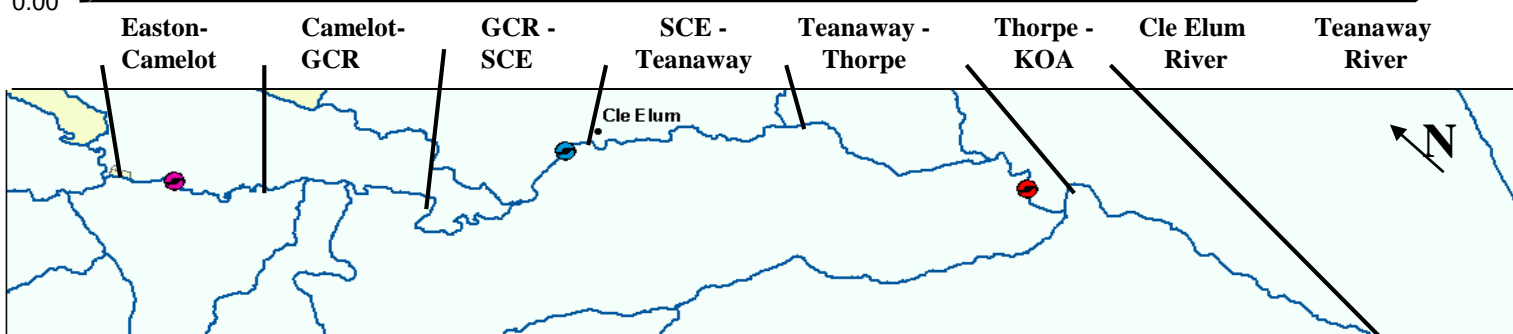
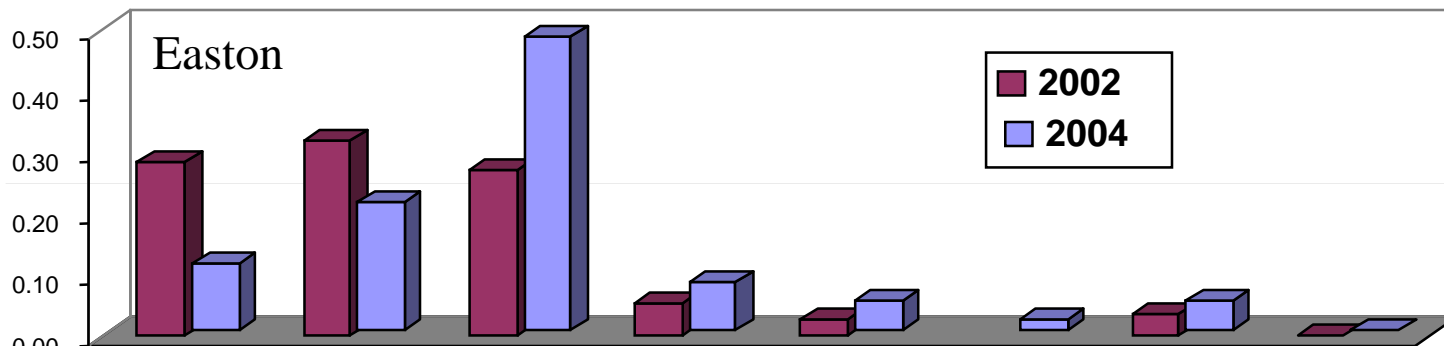
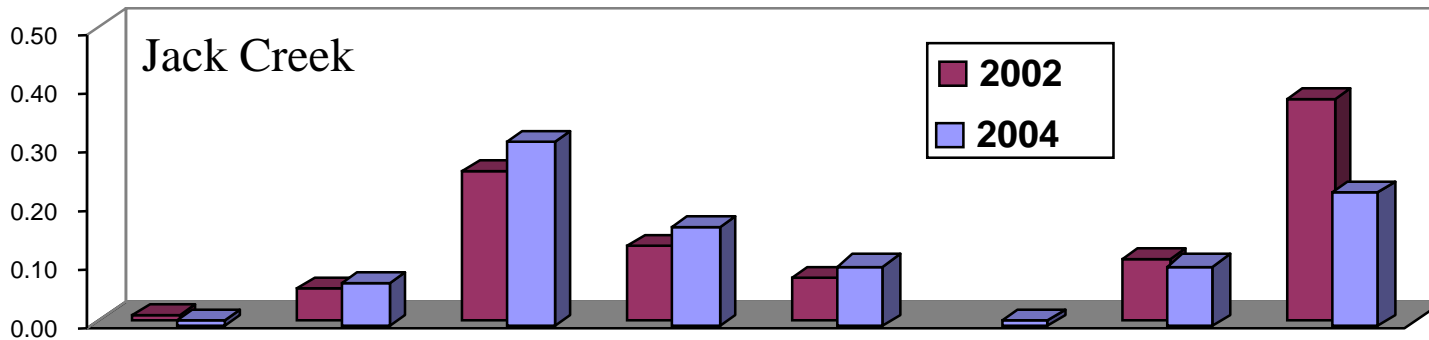
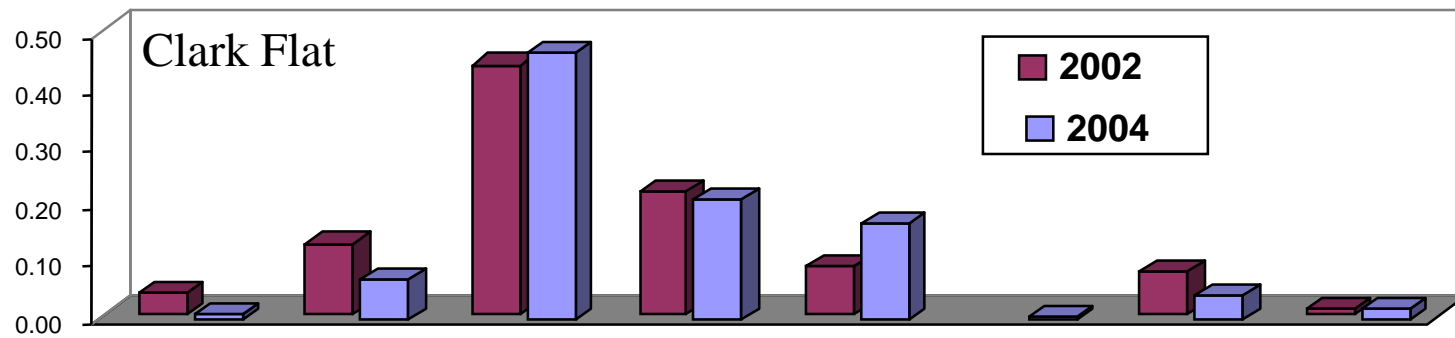


Clark Flat 2004



Upper Yakima River Spring Chinook Distribution





Conclusions

- Salmon can/do imprint and home to release sites (although spatial scales vary); relaxed home site fidelity**
- Tradeoffs between home site and habitat quality**
- Even moderate hatchery “straying” could impact wild fish (Cle Elum R.)**
- Hatchery-reared fish do not (yet) “colonize” all reaches utilized by wild fish**

Acclimation does increase number of spawners in underutilized habitat

Future studies

- 1) Continue mapping of homing and spawning locations of wild and YKFP supplementation salmon (e.g. interannual variation; density dependence, habitat changes)**
- 2) Linkages between homing and habitat in spawning site selection**
- 3) Assess efficacy of acclimation/off site release in recolonization of underutilized habitat (Experimental manipulations - e.g. direct release, time of acclimation; reproductive success of Teanaway fish)**
- 4) Physiological and behavioral (radiotelemetry) assessments of imprinting and homing**





Mile 5



THE NEXT SUNCADIA COMMUNITY - 2005

GOLF COURSE
DESIGNED BY JACOBSEN HARDY
PETER JACOBSEN, WINNER 2004
PGA SENIORS TOURNAMENT

Braided River

Suncadia Village

Battista's Meadow

Roslyn

Future Developments

WISHBONE

Rocking Chair

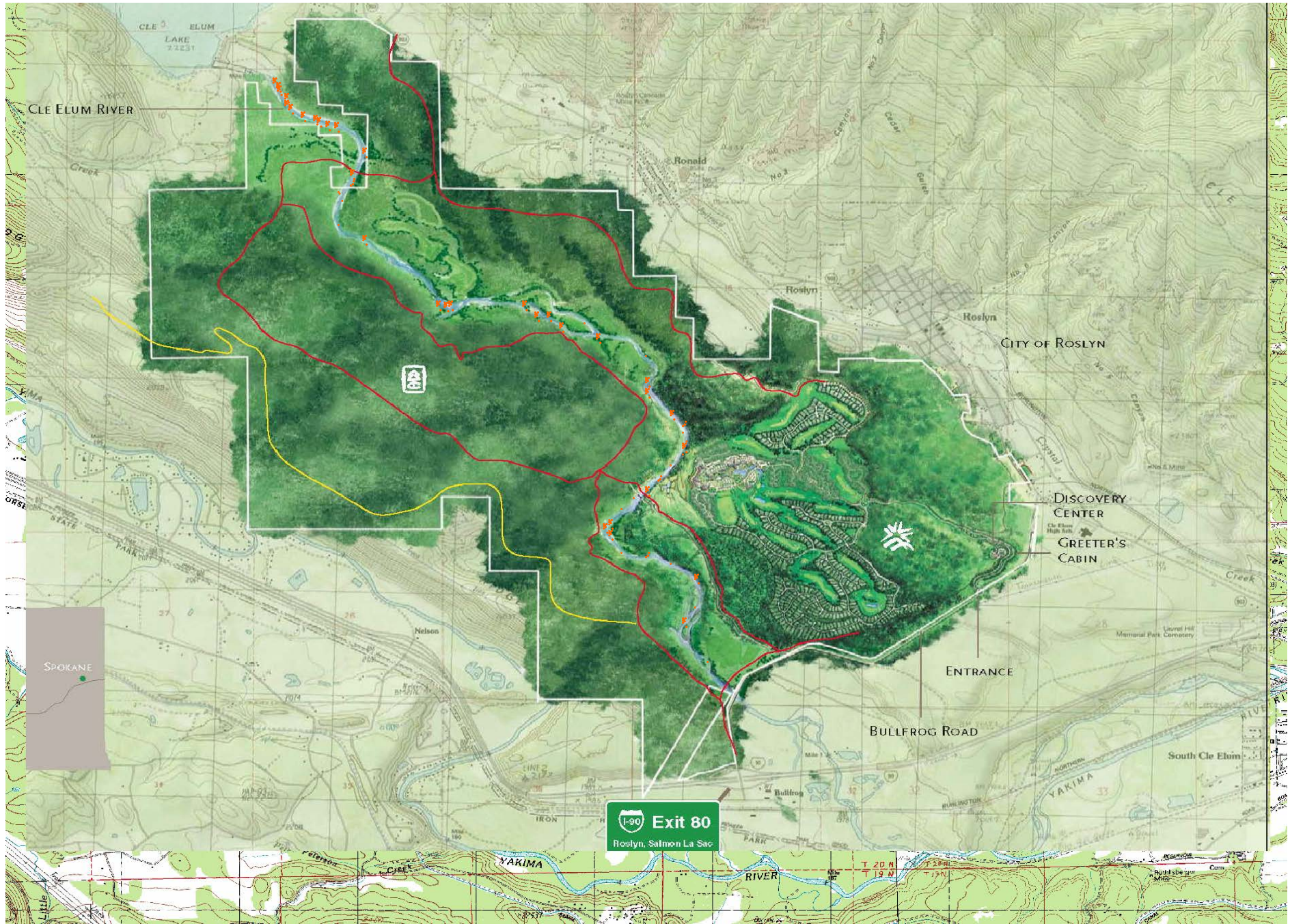
Big Hill

FUTURE
TUMBLE CREEK
COMMUNITY

Mountainstar

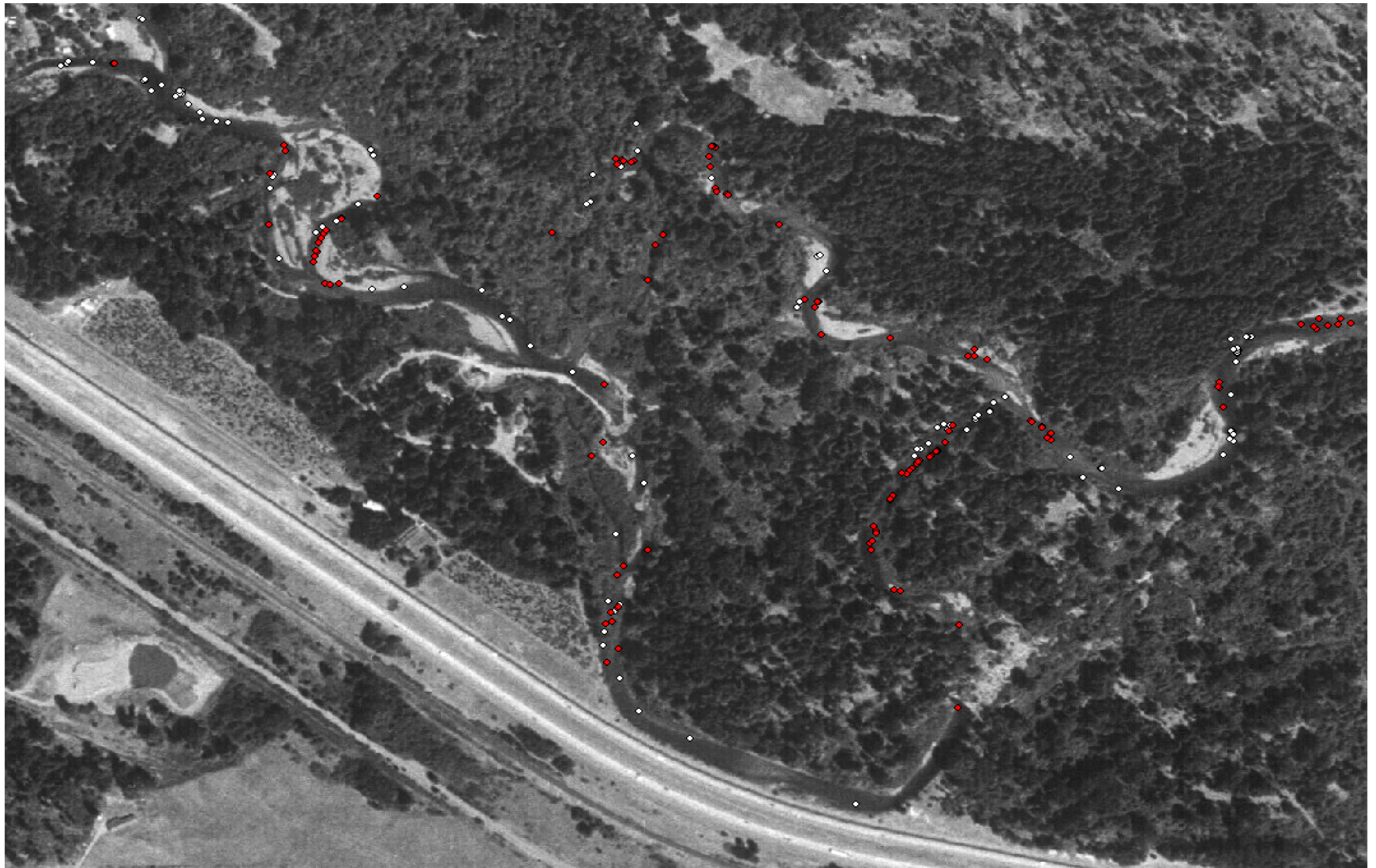
ER Bullfrog

Trans



Future studies

- 1) Continue mapping of homing and spawning locations of wild and YKFP supplementation salmon (e.g. interannual variation; density dependence, habitat changes)**
- 2) Linkages between homing and habitat in spawning site selection**
- 3) Assess efficacy of acclimation/off site release in recolonization of underutilized habitat (Experimental manipulations - e.g. direct release, time of acclimation; reproductive success of Teanaway fish)**
- 4) Physiological and behavioral (radiotelemetry) assessments of imprinting and homing**



Future studies

- 1) Continue mapping of homing and spawning locations of wild and YKFP supplementation salmon (e.g. interannual variation; density dependence, habitat changes)**
- 2) Linkages between homing and habitat in spawning site selection**
- 3) Assess efficacy of acclimation/off site release in recolonization of underutilized habitat (Experimental manipulations - e.g. direct release, time of acclimation; reproductive success of Teanaway fish)**
- 4) Physiological and behavioral (radiotelemetry) assessments of imprinting and homing**

Acknowledgements



Field help

Jaime Athos

Brian Burke

Walt Dickhoff

Mike Hayes

Michelle Havey

Becky Kihslinger

Eric Kummerow

Andy Pierce

Linda Rhodes

Julie Scheurer

Yakama Nation

Dave Fast

Mark Johnston

Bill Bosch

Yakama biologists

NMFS

Blake Feist

Michelle Rub