

Yakima Basin Fish and Wildlife Recovery Board

Board Structure

- Incorporated as an independent non-profit organization
- Governed by a Board made up of Local Governments
- Funded through WDFW & the IAC

Current YBFWRB Products

- Plans
 - Subbasin Plan (BPA)
 - Salmon Recovery Plan (ESA)
- Reviews
 - SRFB Project review
 - Community Salmon Fund review
 - BPA Project review

What is on our plate right now:

1. Lead Entity for the Yakima Basin
2. Steelhead Recovery Planning
3. Coordinating Steelhead Monitoring
4. Outreach Efforts

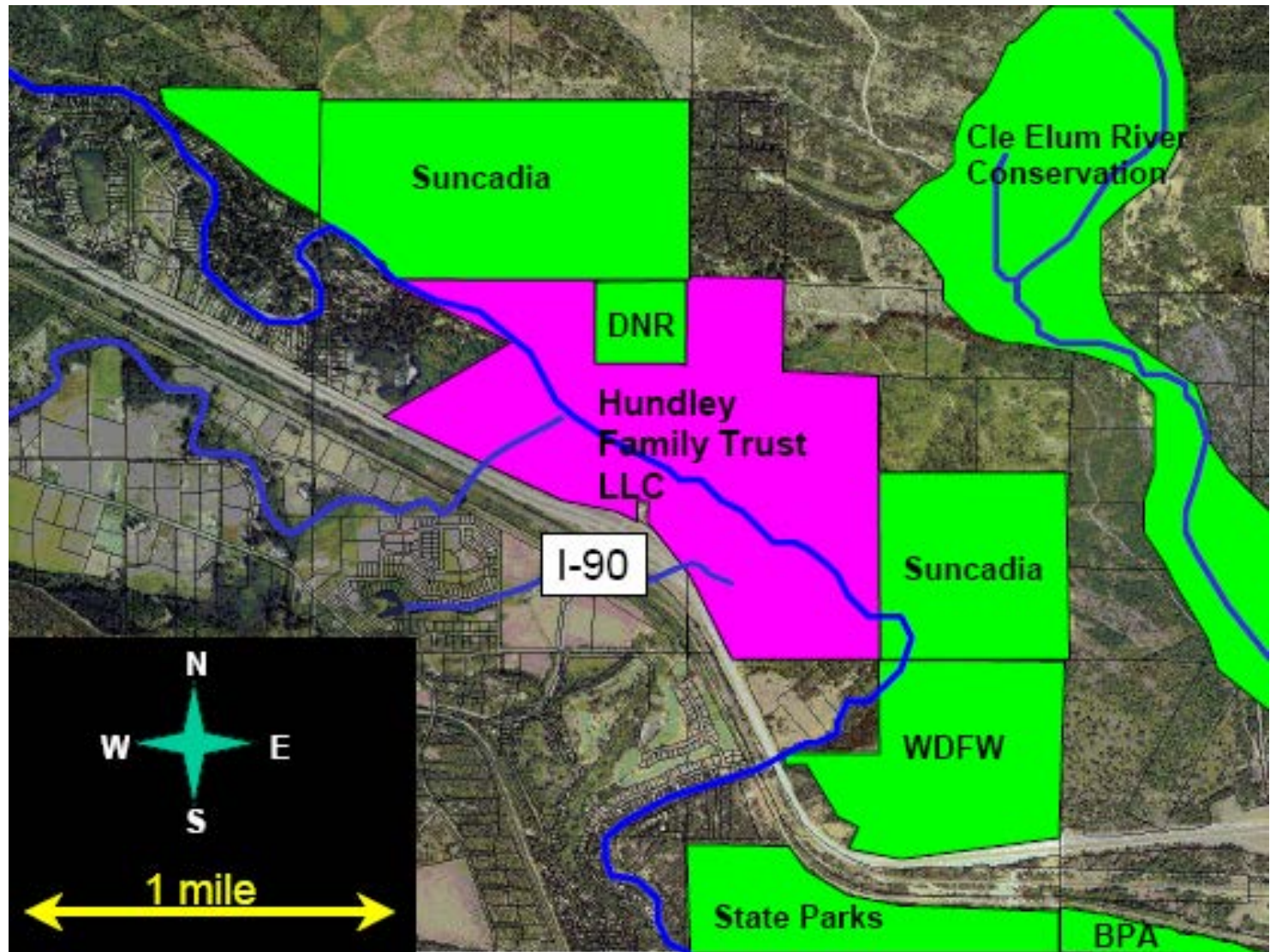
The SRFB Funding Process

- The Salmon Recovery Funding Board makes funding available for salmon recovery projects throughout Washington
- The funding comes from a mix of state funds (40%) and federal funds (60%)
- Projects are recommended to the SRFB for funding by local Lead Entities
- We are the Yakima Basin Lead Entity

As the Lead Entity for our area, we:

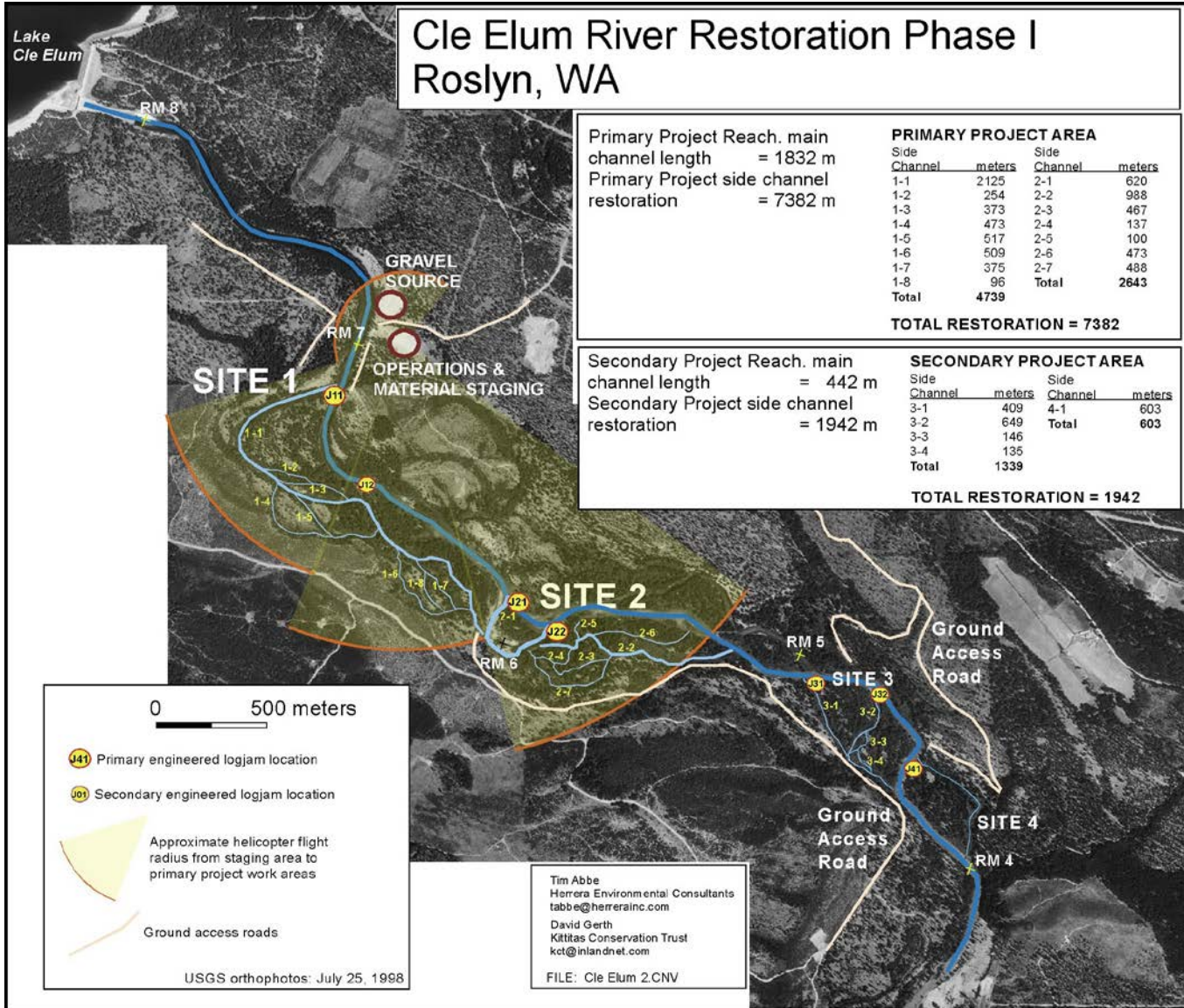
- Advertise for and accept applications for SRFB funding
- Work with applicants to ensure strong proposals are submitted
- Convene a Technical Advisory Group of local technical experts to review the biological & technical merits of proposed projects
- Convene a Citizen's Committee to review the projects' merits (including economic, social and cultural aspects) and develop a ranked list of proposed projects
- Submit the final ranked list to the SRFB
- Represent the Yakima Basin and its project list in the state-wide review process

Rank	<u>PRISM #</u>	<u>Project Name</u>	<u>Funding Amount</u>	<u>Cumulative Total</u>
1	06-2143	Upper Yakima Protection-Hundley	\$300,000.00	\$300,000
2	06-2141	Cle Elum River Instream Habitat	\$243,820.00	\$543,820
3	06-2160	Currier Creek-EWC Siphon & Screen	\$155,050.00	\$698,870
4	06-2156	Cherry Ck Barrier Removal and Screening	\$316,900.00	\$1,015,770
5	06-2193	Naches River Floodplain Acquisition	\$141,175.00	\$1,156,945
6	06-2200	Schneider Habitat Project on Cowiche Creek	\$112,701.00	\$1,269,646
7	06-2192	YTAHP - Jack Creek Culvert Replacement	\$270,825.00	\$1,540,471





Cle Elum River Restoration Phase I Roslyn, WA



Primary Project Reach. main
channel length = 1832 m
Primary Project side channel
restoration = 7382 m

PRIMARY PROJECT AREA

Side Channel	meters	Side Channel	meters
1-1	2125	2-1	620
1-2	254	2-2	988
1-3	373	2-3	467
1-4	473	2-4	137
1-5	517	2-5	100
1-6	509	2-6	473
1-7	375	2-7	488
1-8	96		
Total	4739	Total	2643



TOTAL RESTORATION = 7382


Secondary Project Reach. main
channel length = 442 m
Secondary Project side channel
restoration = 1942 m


SECONDARY PROJECT AREA

Side Channel	meters	Side Channel	meters
3-1	409	4-1	603
3-2	649	Total	603
3-3	146		
3-4	135		
Total	1339		

TOTAL RESTORATION = 1942

-  Primary engineered logjam location
-  Secondary engineered logjam location

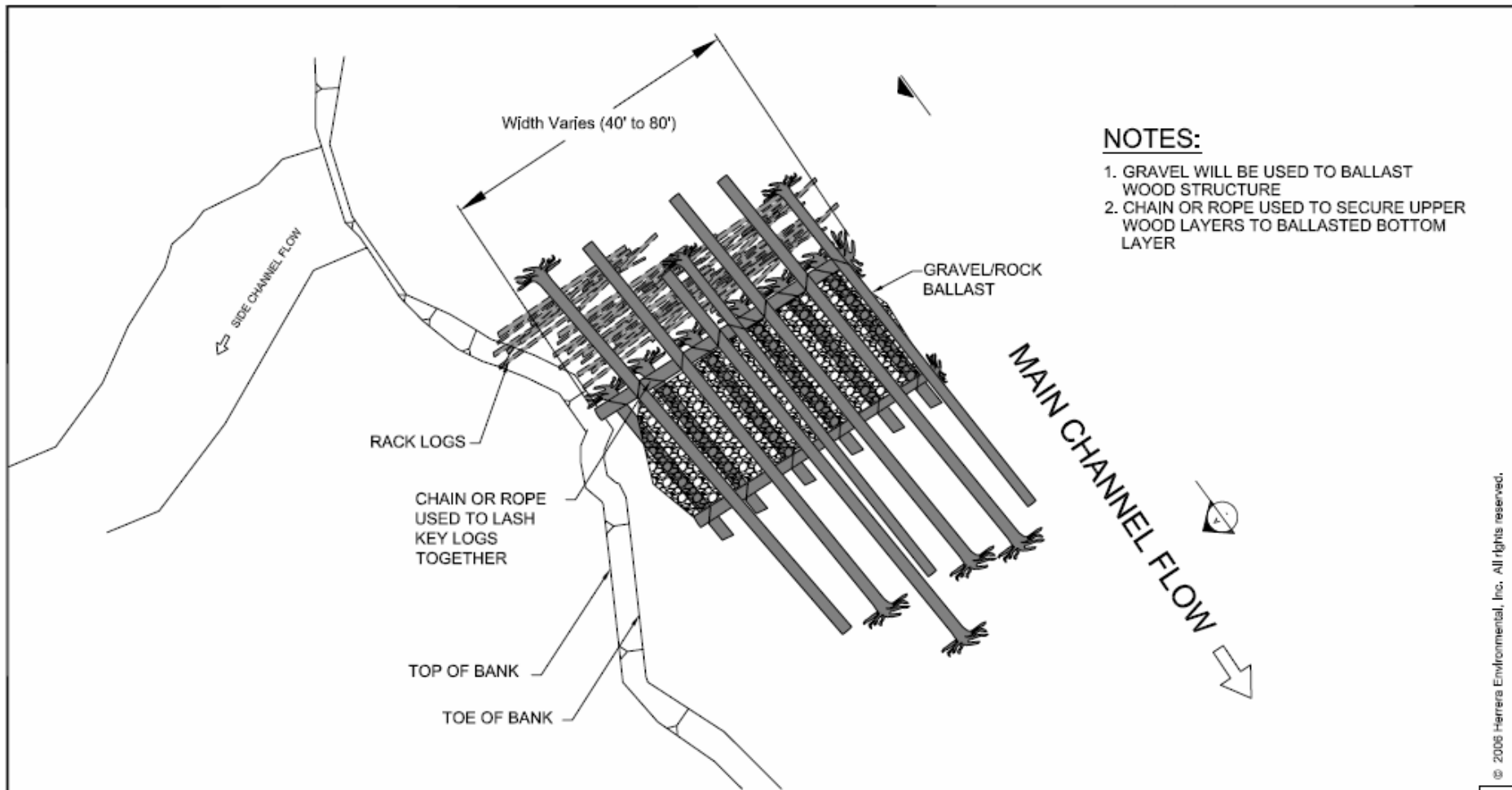
 Approximate helicopter flight radius from staging area to primary project work areas

 Ground access roads

USGS orthophotos: July 25, 1998

Tim Abbe
Herrera Environmental Consultants
tabbe@herrerainc.com
David Gerth
Kittitas Conservation Trust
kct@inlandnet.com

FILE: Cle Elum 2.CNV



NOTES:

1. GRAVEL WILL BE USED TO BALLAST WOOD STRUCTURE
2. CHAIN OR ROPE USED TO SECURE UPPER WOOD LAYERS TO BALLASTED BOTTOM LAYER

PLAN - APEX STRUCTURE

SCALE: NTS



PRELIMINARY CONCEPTUAL DESIGN

NO.	REVISION	BY	APP'D	DATE



2200 5th Avenue
 Suite 1100
 Seattle, Wash/pton
 98121-1820
 206-441-9080
 206-441-8108 FAX
 info@herrerac.com



DESIGNED	DRAWN
T. ARBO	RONIC
CHECKED	CHRONIA
DATE	J. GOLOSHEIN
APPROVED	

CLE ELUM RIVER
 PROPOSED HABITAT RESTORATION PROJECT
 SCHEMATIC
 FIGURE 1

DATE
JULY 2006
PROJECT NO.
DRAWING NO.
SHEET NO.





Community Salmon Fund 2006

Proposed Projects	Manager	Funded	Match	Total
Holmes Side Channel Enhancement	Kittitas Conservation Trust	\$ 18,180	\$ 14,205	\$ 32,385
Cowiche Creek Habitat Enhancement	North Yakima Conservation District	\$ 30,000	\$ 15,910	\$ 45,910
Spring Creek Enhancement	Regional Fisheries Enhancement Group	\$ 30,000	\$ 15,030	\$ 45,030
CARP - Aquatic Vegetation Reduction	Benton Conservation District	\$ 21,820	\$ 18,680	\$ 40,500
Horn Rapids Shoreline Restoration	Benton Conservation District	NF	-	\$ -
Total		\$ 100,000	\$ 63,825	\$ 163,825



Holmes restoration with
community involvement



The Yakima Subbasin Plan

- Approved by the Northwest Power & Conservation Council in 2004
- Covers a wide range of fish & wildlife species
- Provides an inventory of existing projects
- Assesses limiting factors for focal species
- Identifies general restoration strategies, but not specific projects

Yakima Subbasin Salmon Recovery Plan

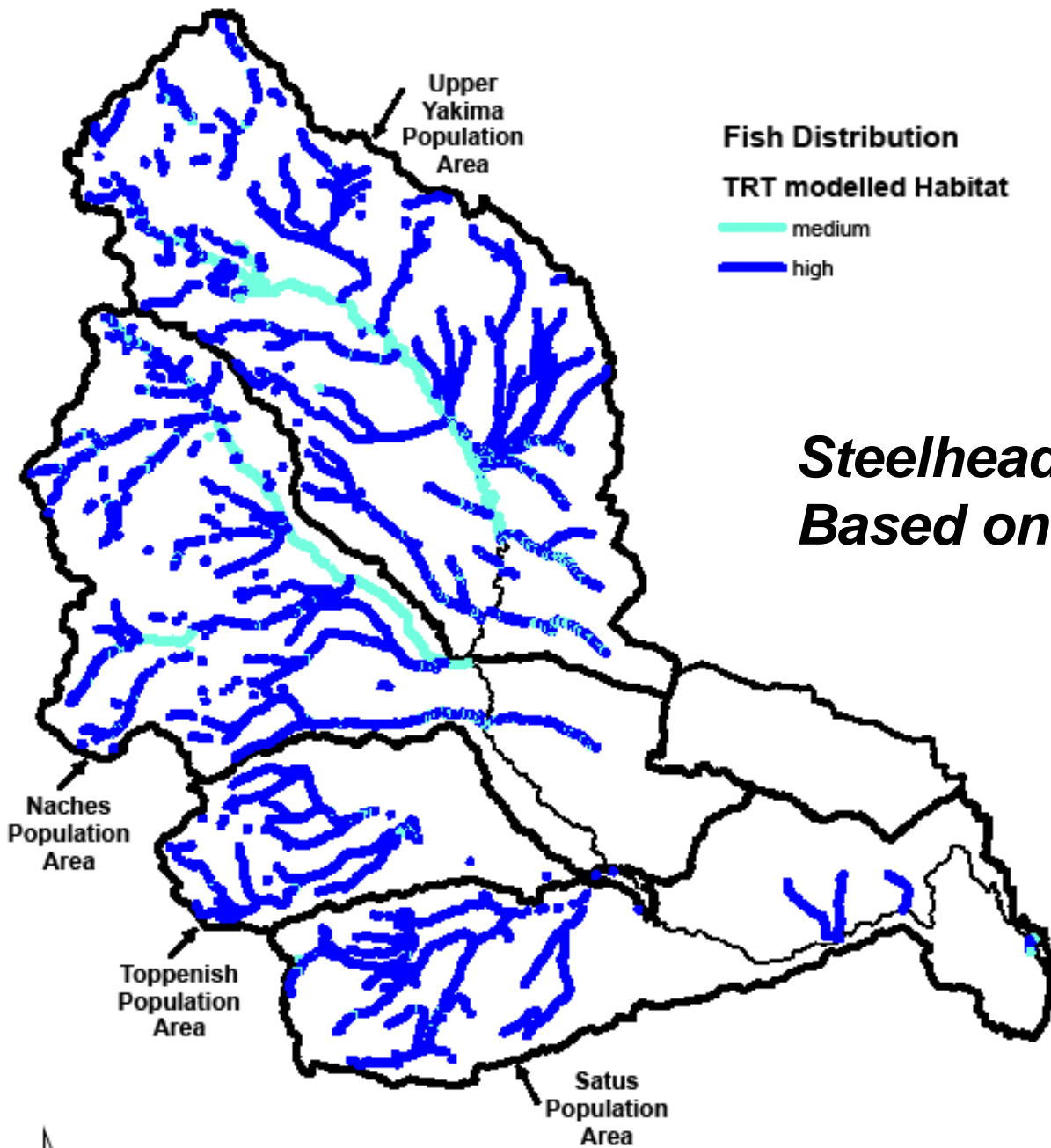
- Part of Statewide Strategy to Recover Salmon
- Focuses just on listed salmonids
(Steelhead & Bull Trout)
- Sets quantifiable targets for fish populations
- Identifies 157 specific actions
- Draft accepted by the Governor last November
- Currently undergoing edits to steelhead portion

Development of the Initial Draft

- Begun in 2004
- Work overseen by the Yakima Subbasin Planning Board
- Administered by Yakima County
- Seamless continuation of the Subbasin Planning Process
- Draft released in October 2005

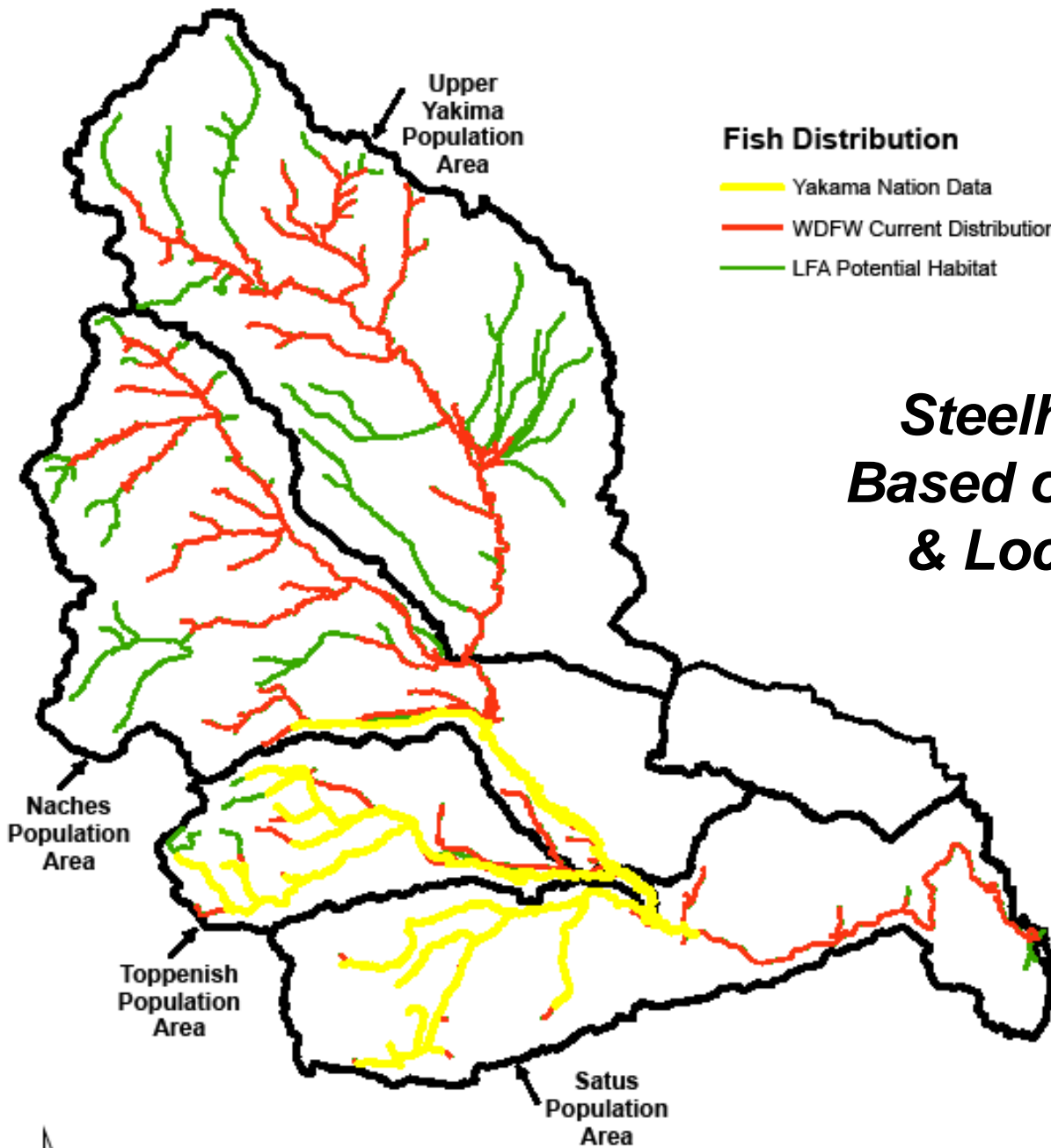
Reviews of the Draft

- Informal consultation with stakeholders in plan development
- Plan and NOAA Supplement published in the Federal Register in May 2006
- Comments received until July 2006
- Comments filed by:
 - American Rivers
 - Bureau of Reclamation
 - Yakima Basin Joint Board



Steelhead Habitat Based on NOAA Models

0 5 10 20 Miles



Fish Distribution

- Yakama Nation Data
- WDFW Current Distribution
- LFA Potential Habitat

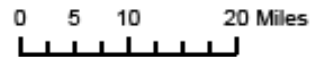
***Steelhead Habitat
Based on Survey Data
& Local Expertise***

Naches
Population
Area

Toppenish
Population
Area

Satus
Population
Area

Upper
Yakima
Population
Area

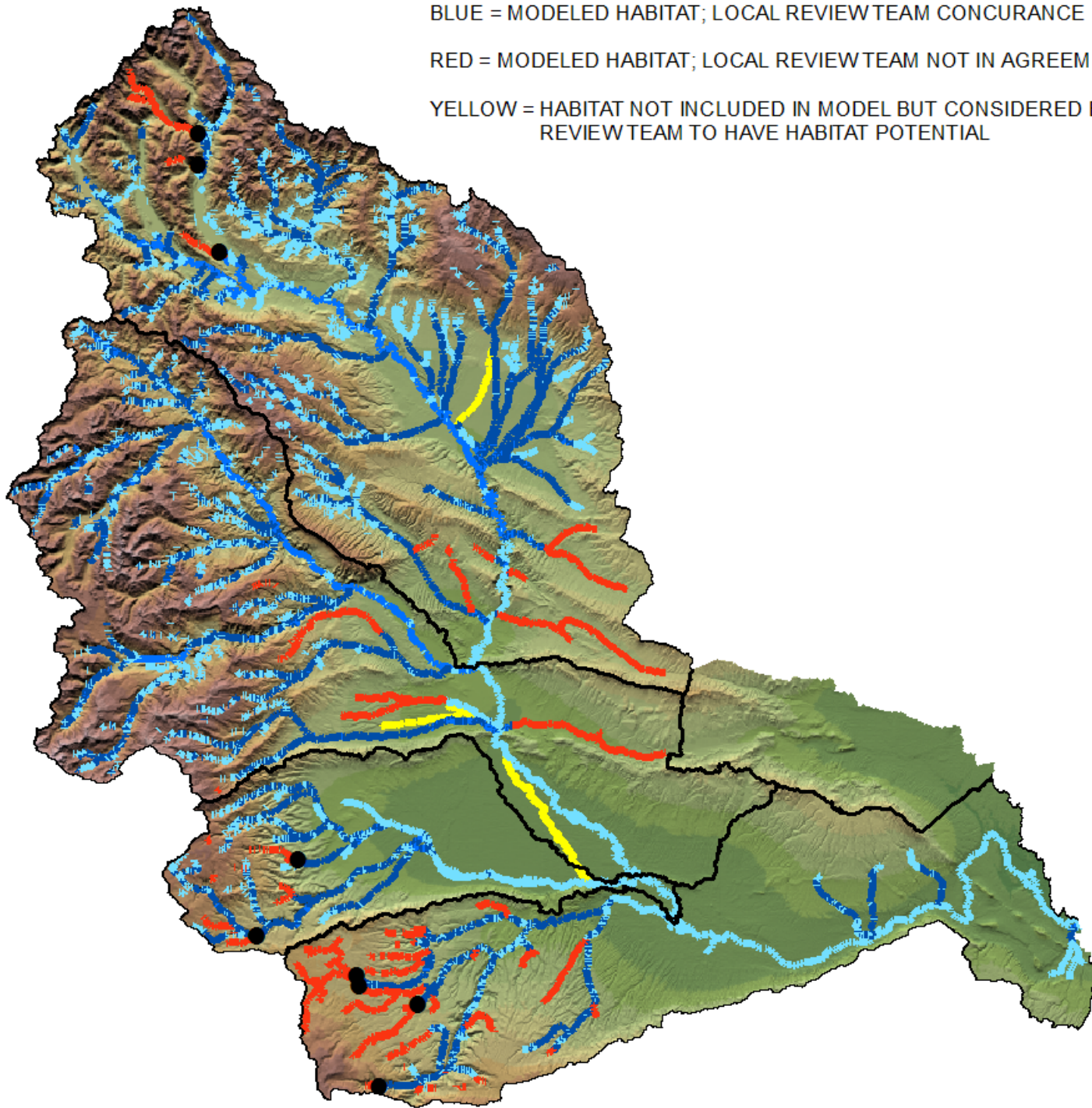




BLUE = MODELED HABITAT; LOCAL REVIEW TEAM CONCURANCE

RED = MODELED HABITAT; LOCAL REVIEW TEAM NOT IN AGREEMENT

YELLOW = HABITAT NOT INCLUDED IN MODEL BUT CONSIDERED BY REVIEW TEAM TO HAVE HABITAT POTENTIAL



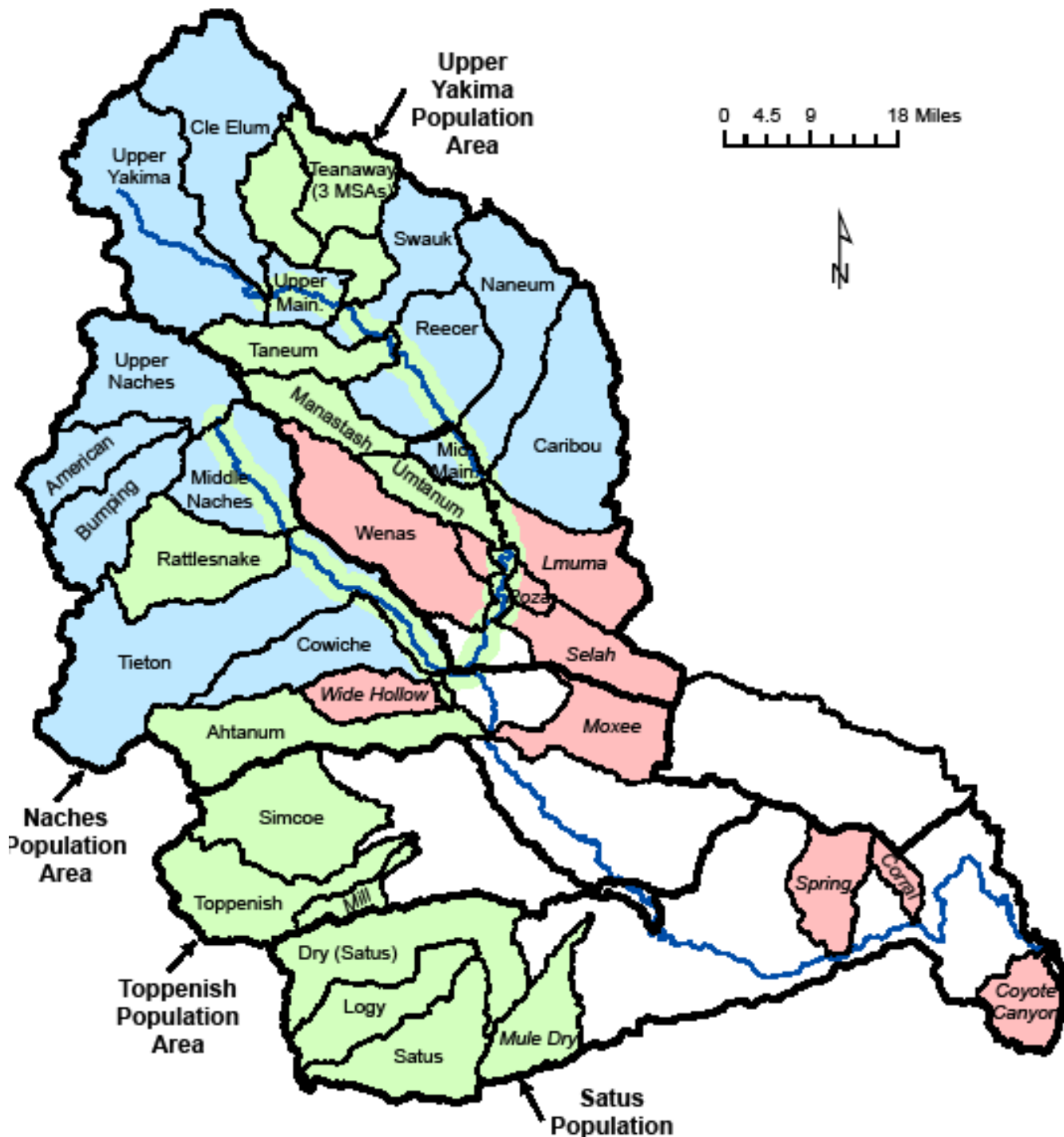
Viabale Salmonid Population (VSP)

Four Parameters to review in assessing the viability of a population:

- **Abundance**
- **Productivity**
- **Spatial Structure**
- **Diversity**

Abundance Thresholds (for delisting purposes only)

Population	Size Class	5% Viability threshold	NOAA TRT MPG Viability Scenario	Minimum Abundance to meet MPG viability threshold
Satus	Intermediate	1000	High Viable	1000
Toppenish	Basic	500	Maintain	250+
Naches	Large	1500	Viable	1500
Upper Yakima	Large	1500	Maintain	500



Tributary Actions

- Restoration of Passage
- Protecting and Restoring Riparian Habitat
- Securing Adequate Flows
- Reconnecting with floodplains

And possibly,

Targeted tributary specific supplementation?

Mainstem Actions

- Protecting and restoring floodplains
- Ensuring adequate temperatures and flows for up and downstream migrations
- Addressing downstream passage at Roza and predation issues at lower river dams
- Addressing issues associated with high flows associated with irrigation water deliveries

Key Uncertainties

- Nature of interactions between resident and anadromous *O. mykiss* in Naches & Upper Yakima populations
- Relationship between flow, temperature & migratory survival rates in lower Yakima
- Current/historic/potential roll of mainstem Yakima & Naches as spawning habitat

The Next Steps

Developing estimates of reduction in gaps due to plan implementation

Developing an RM & E plan that:

- Provides reliable estimates of steelhead VSP parameters
- Addresses key uncertainties
- Evaluates the effectiveness of key actions

Future Directions for the Board

- Building Political & Financial Support for Restoration Activities
- Focusing Restoration Activities on Key Priorities and Tracking Our Progress Towards Effectively Addressing Them

Building Political & Financial Support

- Participate in regional processes on behalf of the Yakima Basin to build support for fish & wildlife restoration programs
- Build local support and engagement for restoration activities through outreach and education efforts
- Work with project proponents to develop & seek funding for restoration projects identified as priorities

Focus on Priorities & Tracking Progress Towards Them

- Update plans as needed and ensure that they are linked to on-the-ground implementation of priority actions
- Track restoration efforts and provide regular overviews of the status of Fish & Wildlife restoration activities in the basin
- Coordinate development of a basin wide monitoring strategy that integrates work already underway in the basin with state & regional RM&E efforts