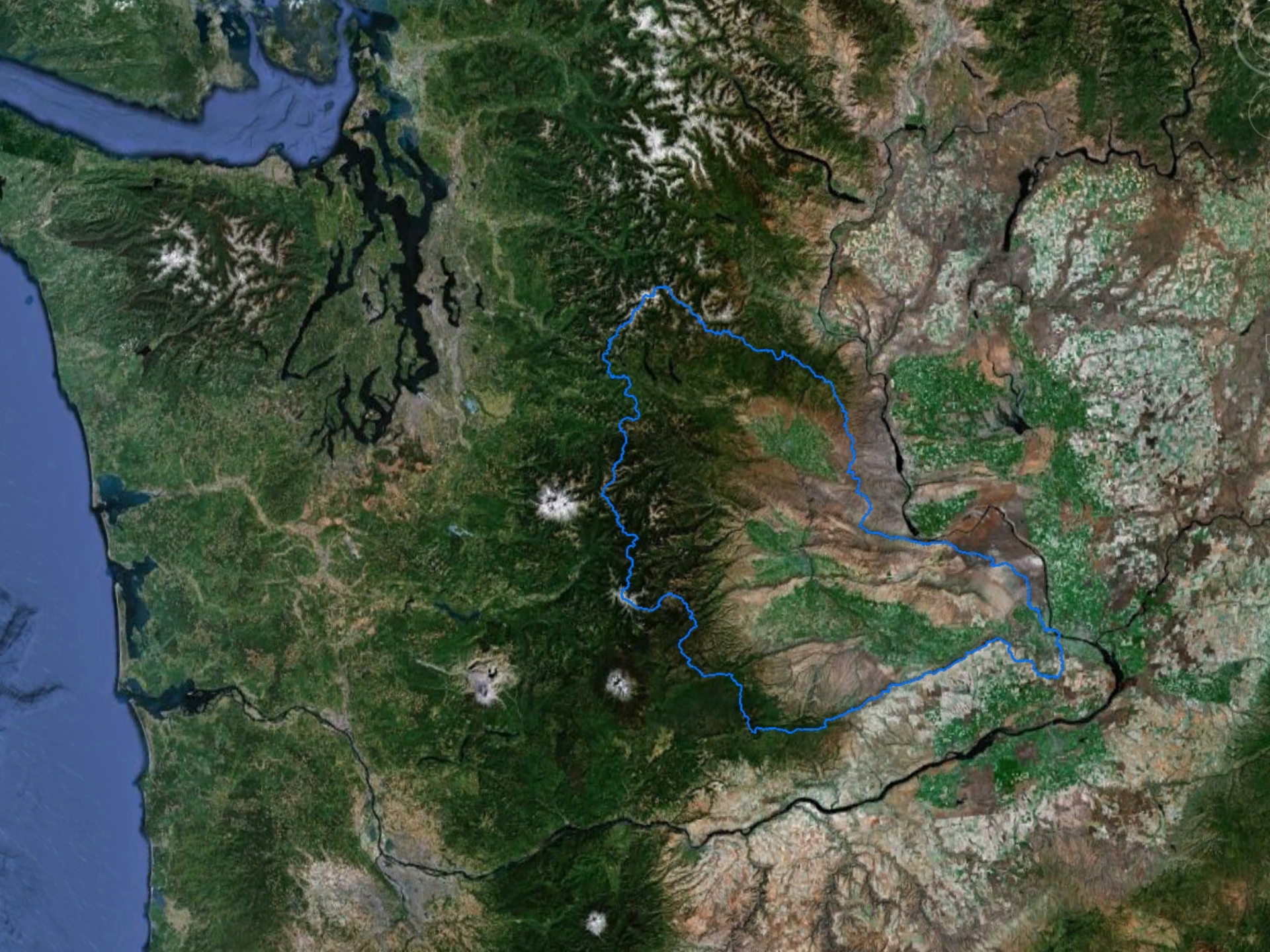
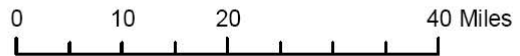
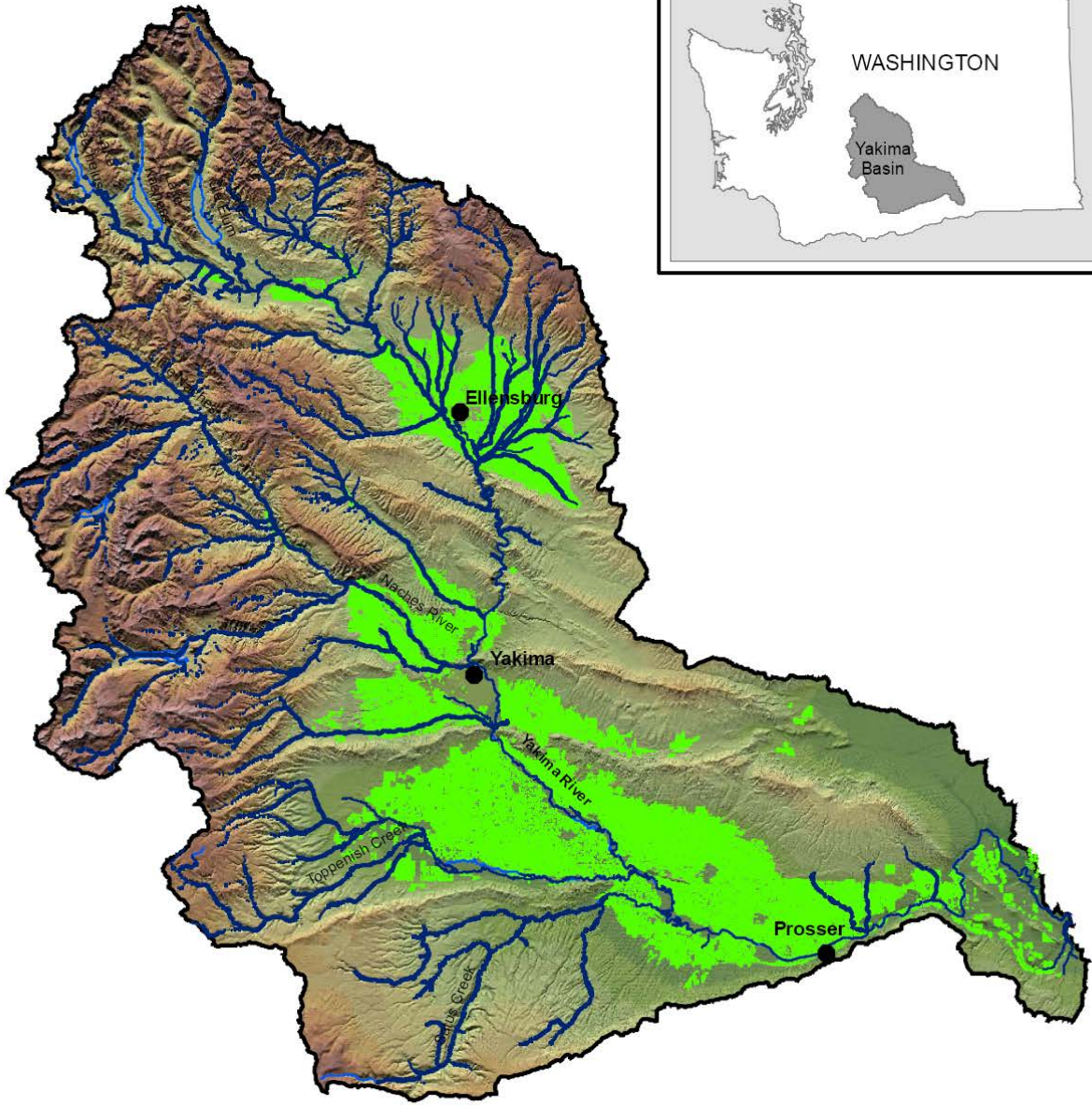


HABITAT Overview



Presented by Alex Conley, Executive Director
Yakima Basin Fish & Wildlife Recovery Board













Historic Salmon Runs

Species/Run	Low Estimate	High Estimate	Current Status	Low	Year	High	Year
Spring Chinook	200,000	500,000	Supplemented Population	666	1995	21,472	2001
Fall Chinook	38,000	100,000	Supplemented Population	523	1988	13,000	2002
Summer Chinook	??	??	Extirpated	-		-	
Coho	40,000	150,000	Extirpated and reintroduced	-	till 93	9,091	2009
Sockeye	100,000	600,000	Extirpated	-		-	
Steelhead	30,000	100,000	Wild Population	721	1990	6,796	2009
Total	408,000	1,450,000		1,910		50,359	
Bull Trout	??	??	Wild Population			2500 to 3000 adults	
Lamprey	??	??	Wild Population			0 to 87 adults	

Habitat Priorities

94 In-basin Actions Identified, focusing on:

- Passage & screening in key tributaries
- Instream flows and habitat improvements in key tributaries
- Mainstem floodplain improvement in priority reaches
- Improved mainstem flow conditions

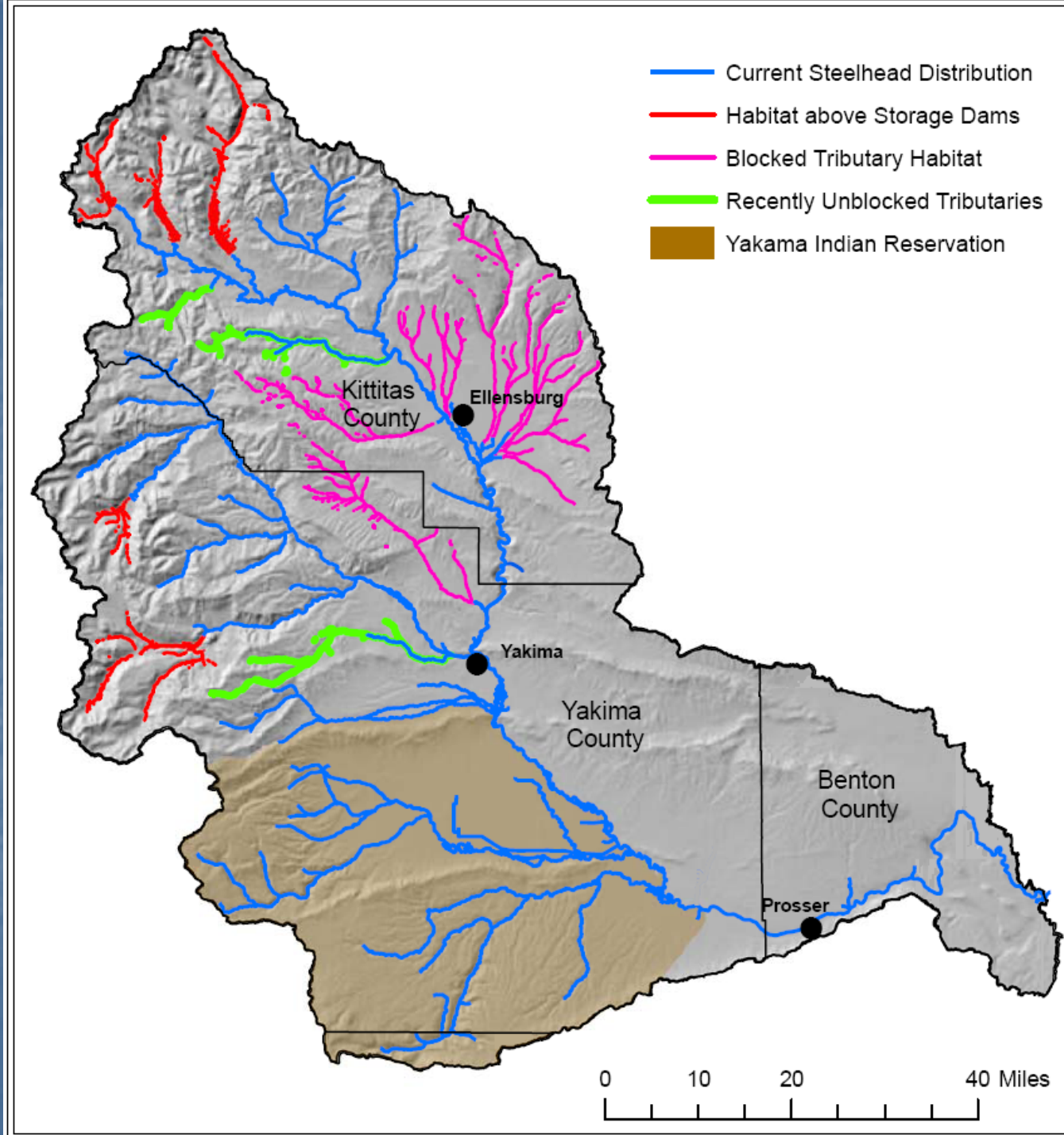
2009 YAKIMA STEELHEAD RECOVERY PLAN

Extracted from the
2005 Yakima Subbasin Salmon Recovery Plan
With Updates

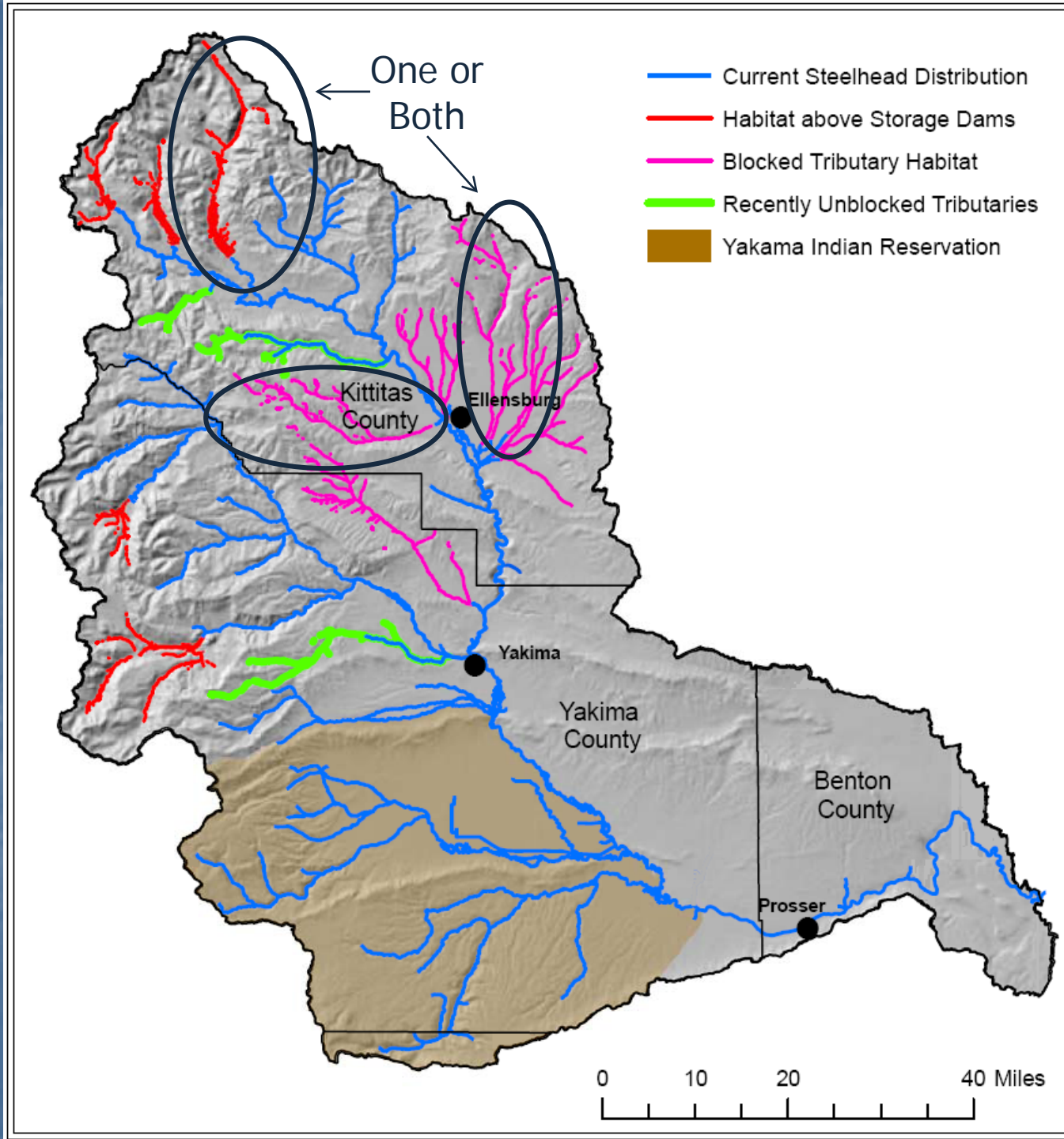
Final
August 2009



Tributary Passage & Screening

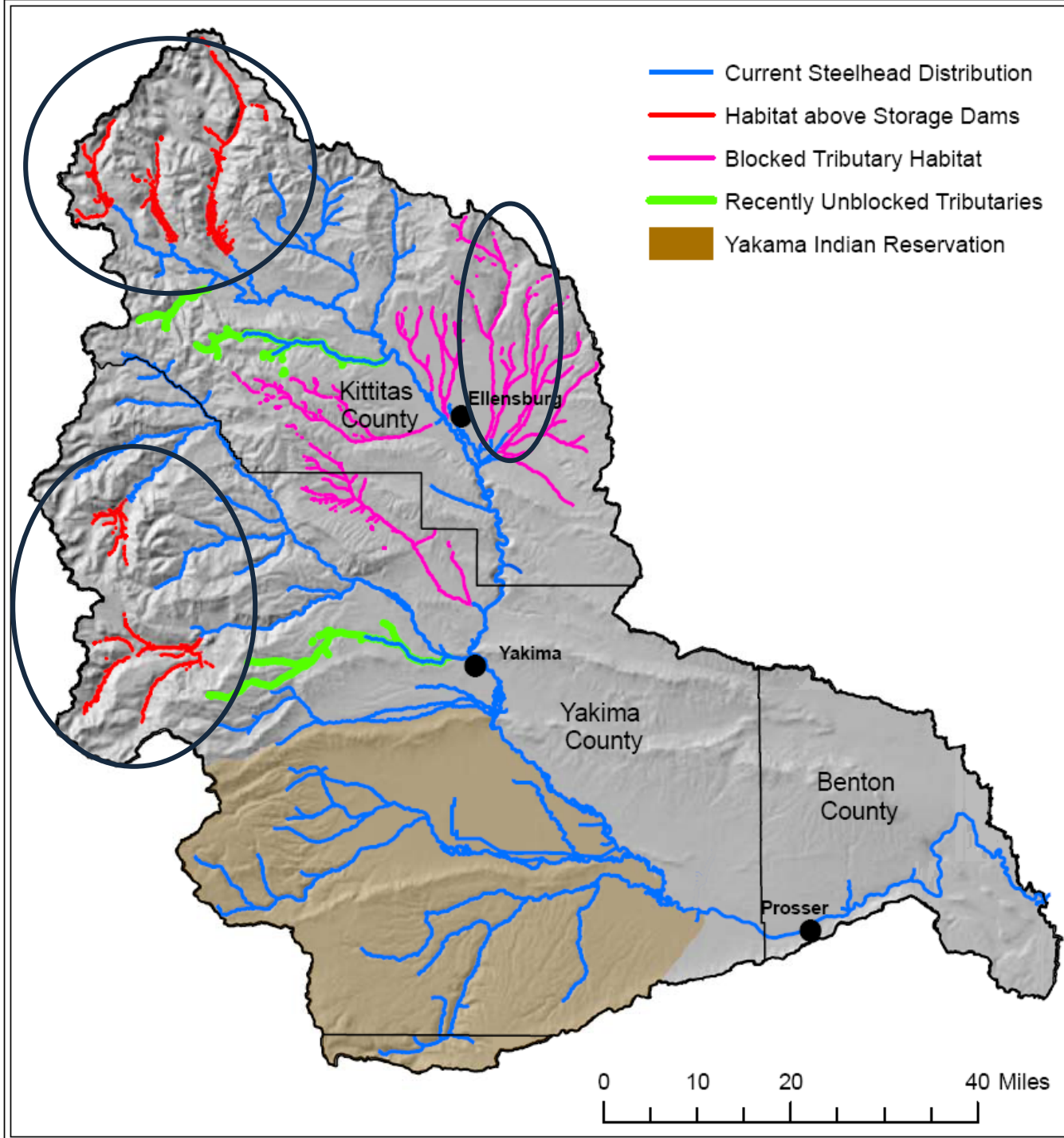


Areas needed to meet steelhead spatial structure standards...





Integrated Plan Passage Priorities



Tributary Habitat & Flow



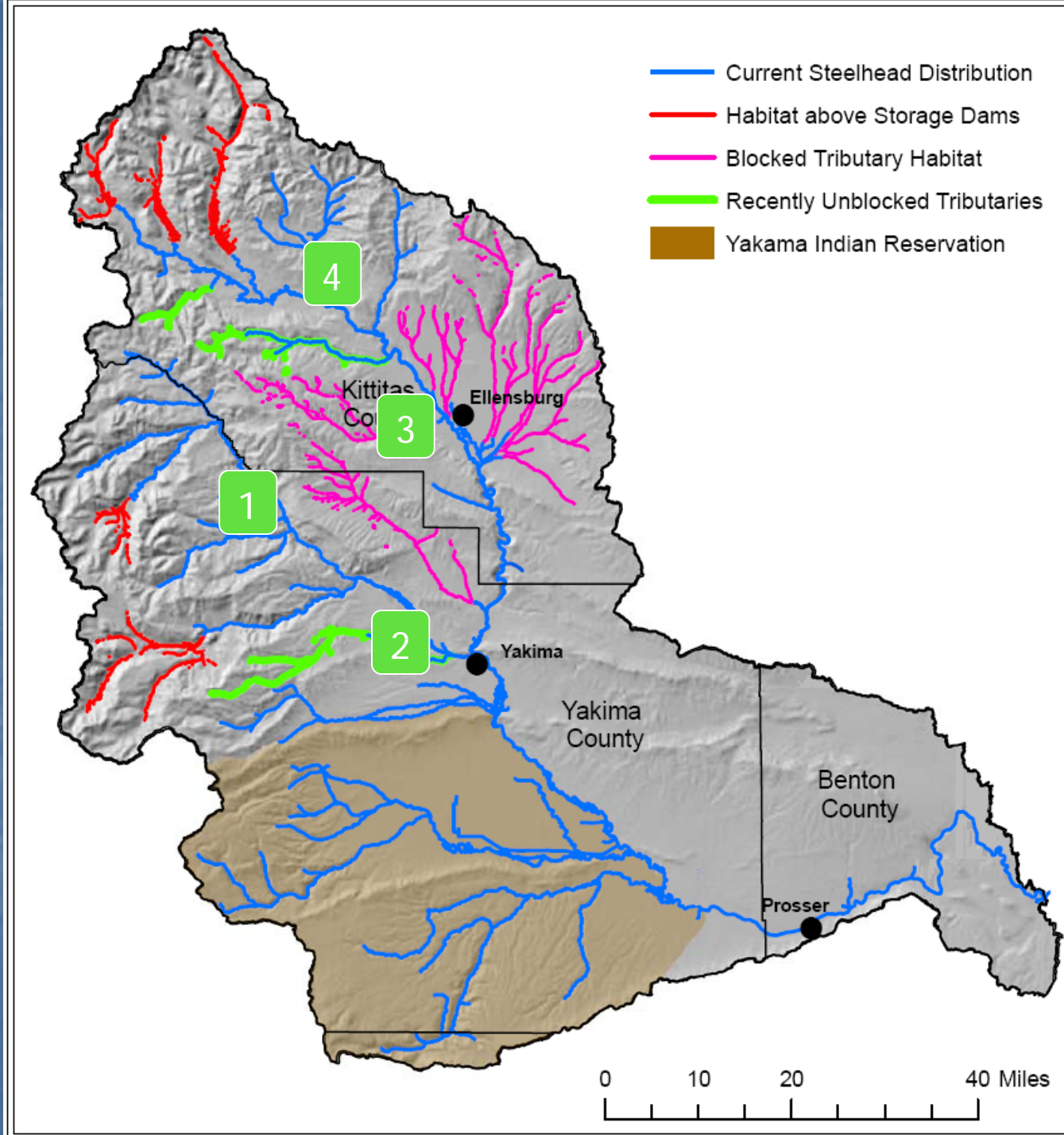






Triubutary Instream Flow Projects:

1. Nile
2. Cowiche
3. Manastash
4. Teanaway



Mainstem Floodplains

- More past- and current- active floodplains than any other interior Columbia system
- Active efforts to protect & enhance floodplains underway
- Scale and complexity of work requires new capacity and funding



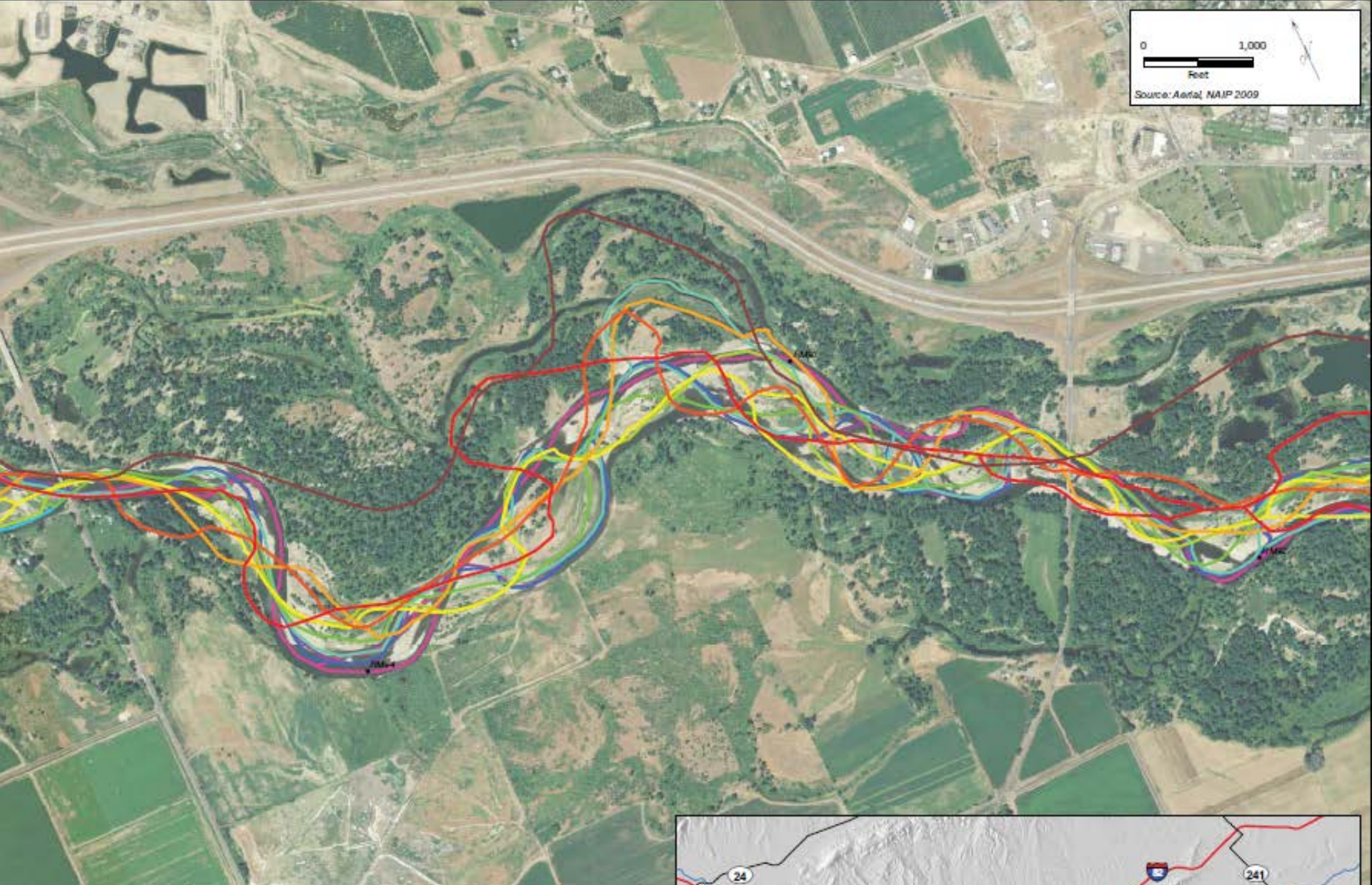
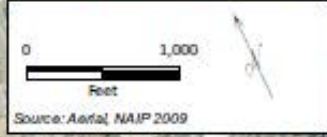
YAKIMA BASIN
FISH AND WILDLIFE
RECOVERY BOARD

A System of Floodplains

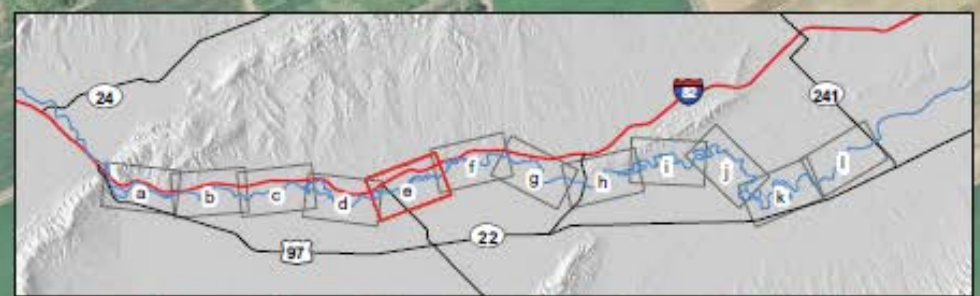


YAKIMA BASIN
FISH AND WILDLIFE
RECOVERY BOARD





1909	1992	2003
1947	1995	2005
1973	1996	2006
1978/1979	2000	2009







Union Gap

© 2007 Europa Technologies

© 2006 Google™

Pointer 46°34'15.02" N 120°27'24.86" W elev 932.0

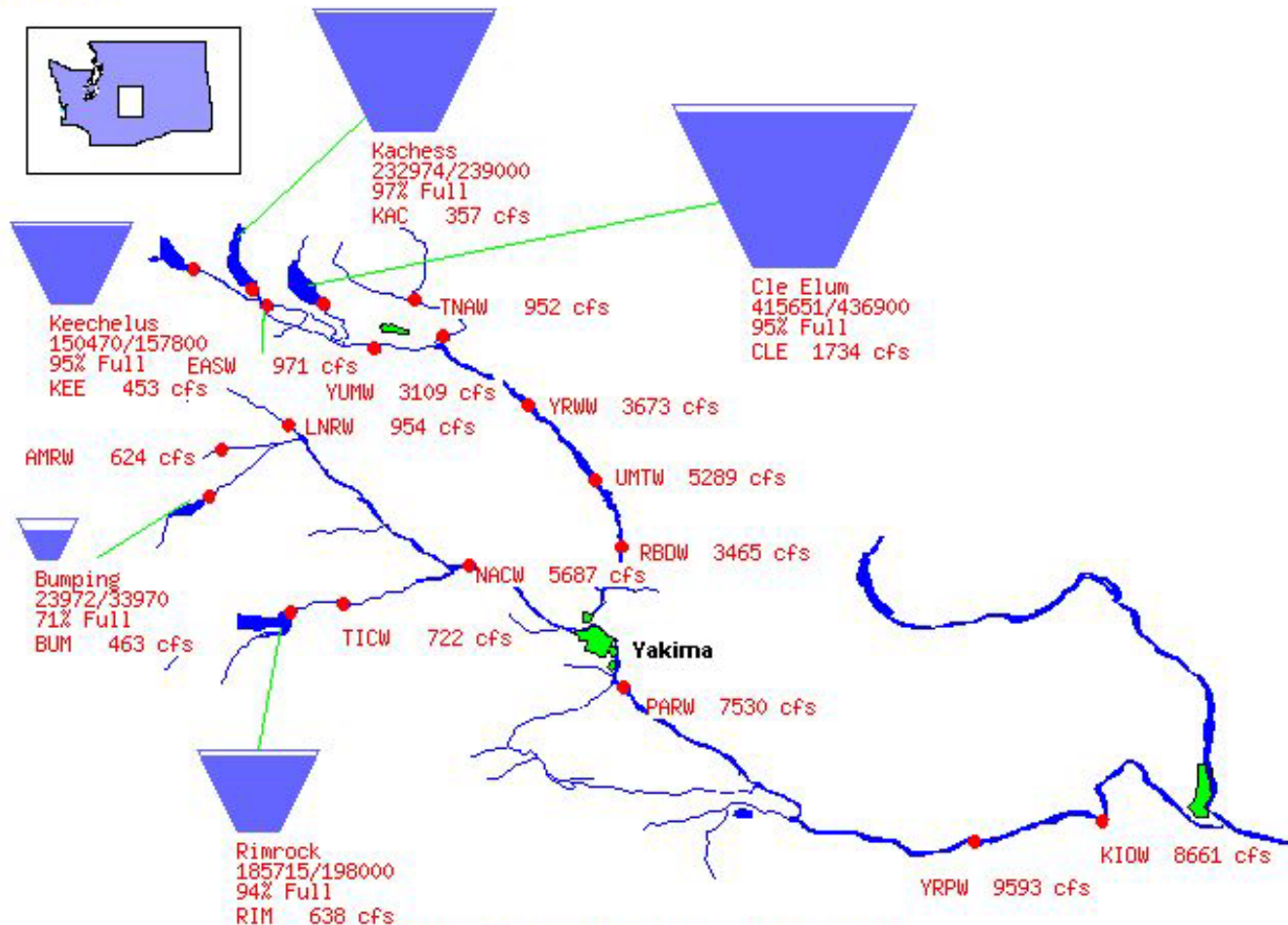
Streaming 100%

Eye alt 15010.0

Mainstem Flow Conditions

Bureau of Reclamation, Pacific Northwest Region Major Storage Reservoirs in the Yakima River Basin

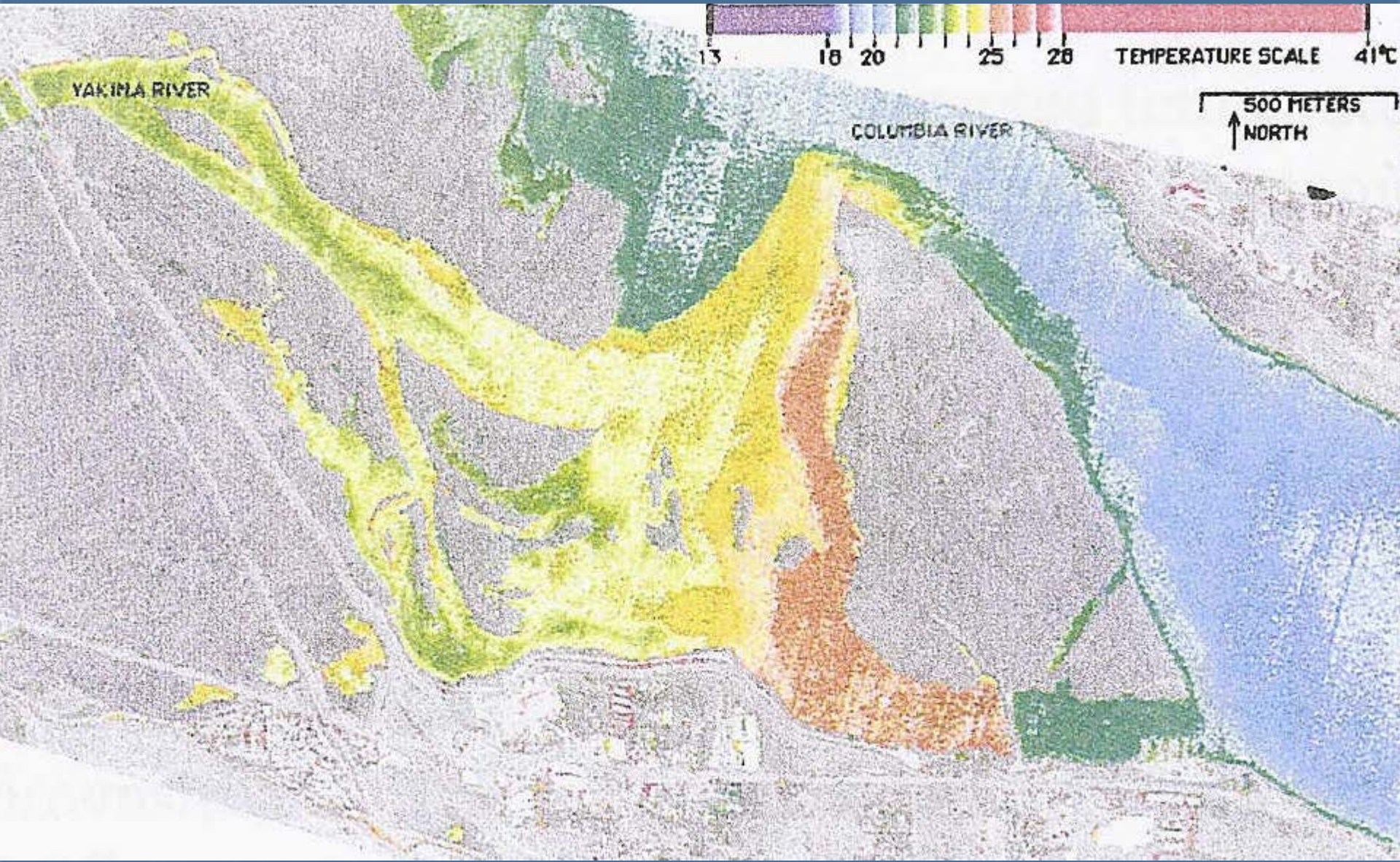
06/02/2011



PROVISIONAL DATA - SUBJECT TO CHANGE!





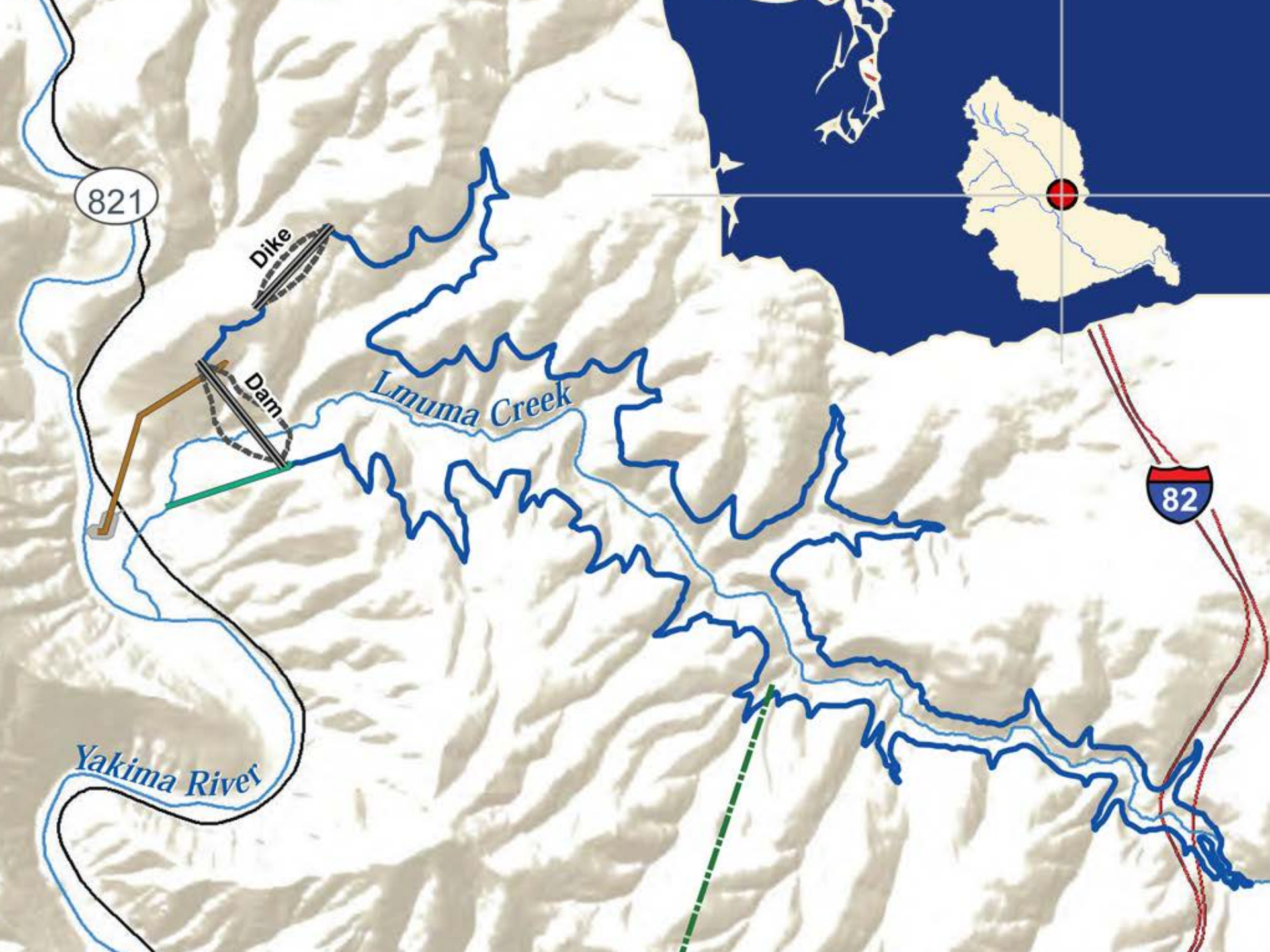


YAKIMA RIVER

COLUMBIA RIVER

13 18 20 25 28 TEMPERATURE SCALE 41°C

500 METERS
↑ NORTH



821

Dike

Dam

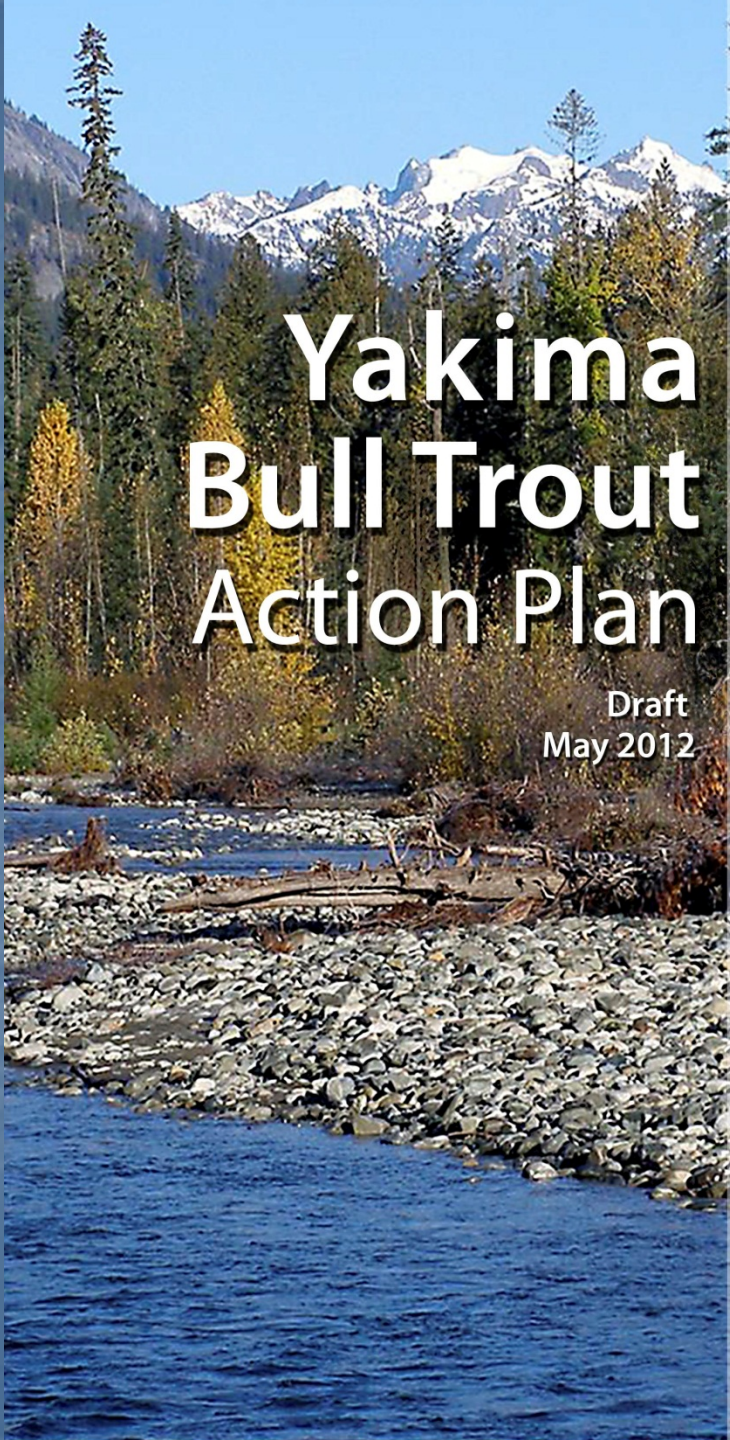
Lemuma Creek

Yakima River

82

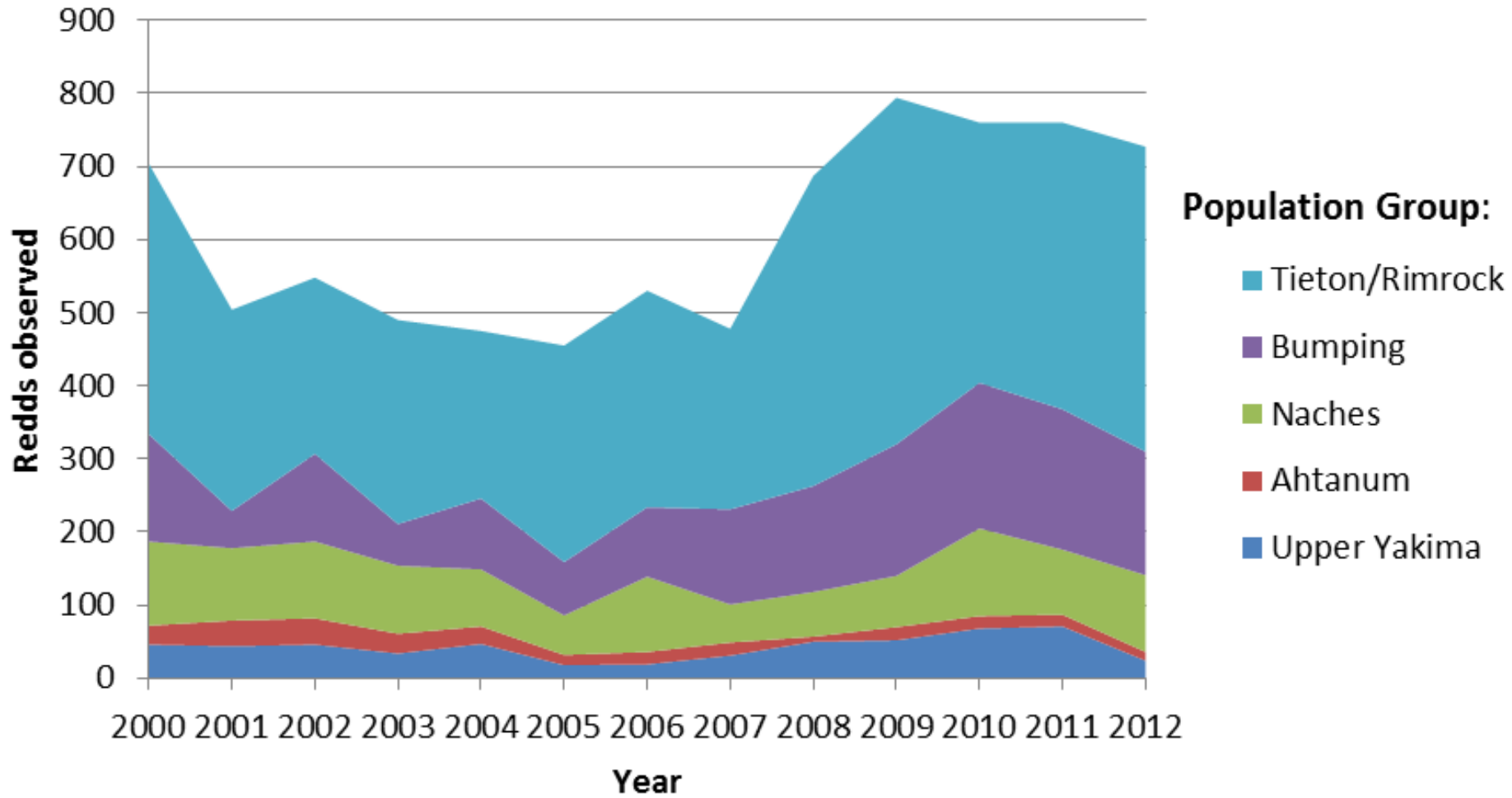
Yakima Bull Trout Action Plan

Draft
May 2012





Yakima Basin Bull Trout Redd Counts



Habitat Funding Summary

<u>Program</u>	<u>Amount</u>
BPA (Habitat only)	\$ 4,000,000
YRBWEP (25% budget)	\$ 2,125,000
SRFB	\$ 1,500,000
Other (at 20% of total)	\$ 1,525,000
ANNUAL TOTAL	\$ 9,150,000

What we've got to work with...

- \$10 million/yr to work with
- Total of ~50 FTEs to manage habitat work
- Spread over ~22 organizations
- Completing 25-35 projects/year
- Average of 1.5 FTEs and \$300,000/project
- At \$60k/each, FTEs = 30% of habitat total

Challenges

- Limited funding & capacity
- Balancing opportunity & priorities
- Understanding links between habitat projects and fish production
- Show goals and progress towards them

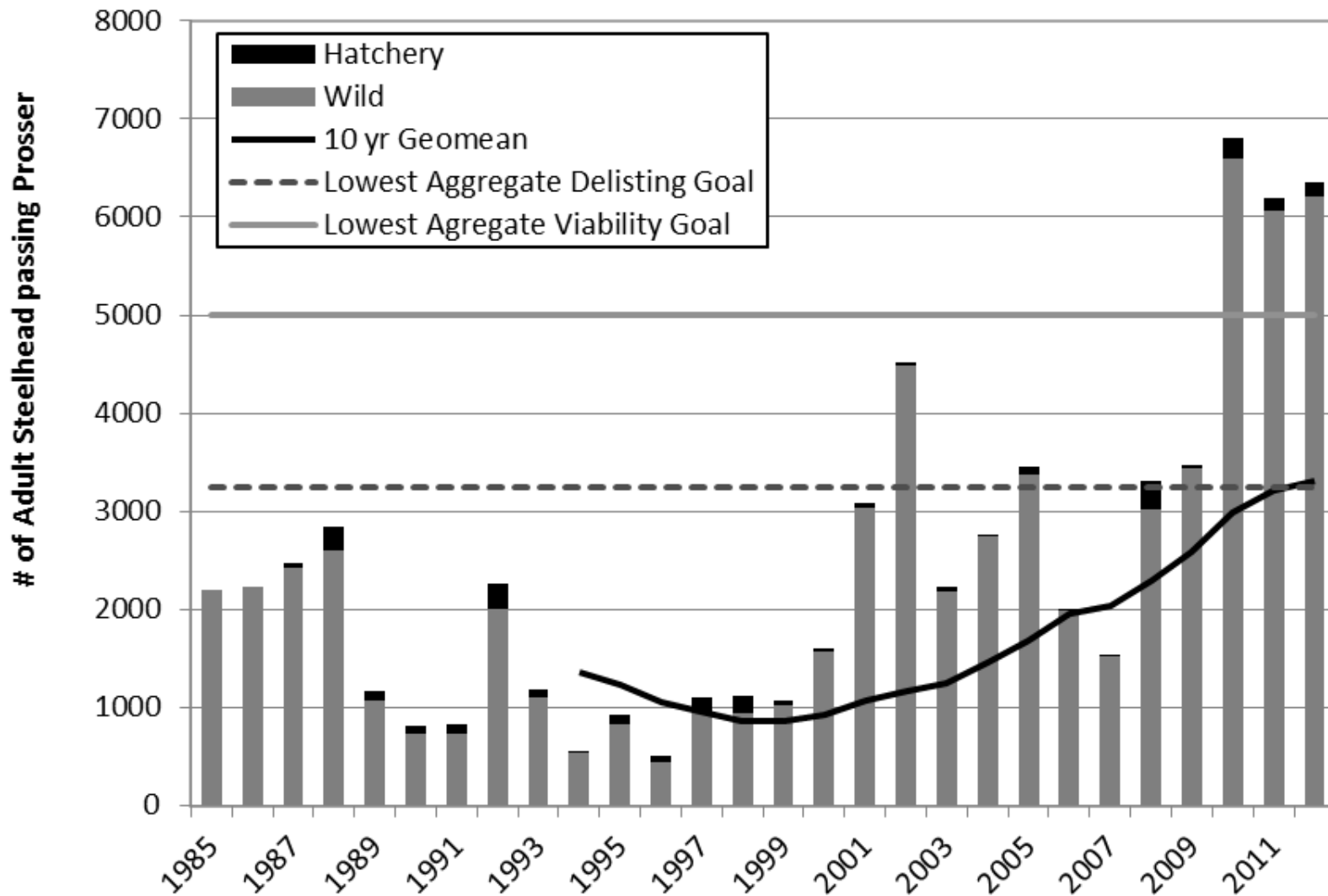
Actions Update

- Update 2009 Steelhead Plan Actions
- Add BTAP Actions
- Add other species actions?
- Show links between actions & projects
- Prioritize next steps for key actions

Habitat RME Plan

- Habitat defined to include flow ?s
- Link to NOAA Threats Criteria
- Currently inventorying existing monitoring
- Will convene planning team to review existing work, specify priority monitoring questions and id key gaps
- Goal is to complete by 2014

Where is it all getting us?



DELISTING STEELHEAD: We can get there

- Recovery Actions are being implemented
- Monitoring is in place for VSP parameters
- Steelhead are approaching biological goals
- Work underway to assess progress towards meeting Threats criteria

Yakima Basin Bull Trout Redd Counts

