



2014 Habitat Track Intro

Presented by Alex Conley

Yakima Basin Fish & Wildlife Recovery Board

Some 2014 Highlights...



BUILDING A FUTURE FOR WATER, WILDLIFE AND WORKING LANDS

YAKIMA RIVER BASIN INTEGRATED WATER RESOURCE MANAGEMENT PLAN

Reservoir Fish Passage

Provide fish passage at:

1. Clear Lake
2. Cle Elum
3. Bumping
4. Tieton (Rimrock)
5. Keechelus
6. Kachess

Enhanced Water Conservation

1. Implement an agricultural water conservation program designed to conserve up to 170,000 acre-feet of water in good water years.
2. Create a fund to promote water use efficiency basin-wide using voluntary, incentive-based programs. Focus on outdoor uses as top priority.

Habitat/Watershed Protection & Enhancement

1. Protect ~70,000 acres of land by acquiring high elevation portions of the watershed and forest and shrub steppe habitat.
2. Evaluate potential wilderness area and wild and scenic river designations to protect streams and habitat.
3. Create a habitat enhancement program to address reach-level floodplain restoration priorities and restore access to key tributaries.

Market Reallocation

Employ a water market and/or a water bank to improve water supply in the Yakima River basin. Market reallocation would be conducted in two phases:

The near-term phase would continue existing water marketing and banking programs in the basin, but take additional steps to reduce barriers to water transfers.

The long-term program would focus on facilitating water transfers between irrigation districts. This would allow an irrigation district to fallow land within the district and lease water rights for that land outside the district.

Structural & Operational Changes

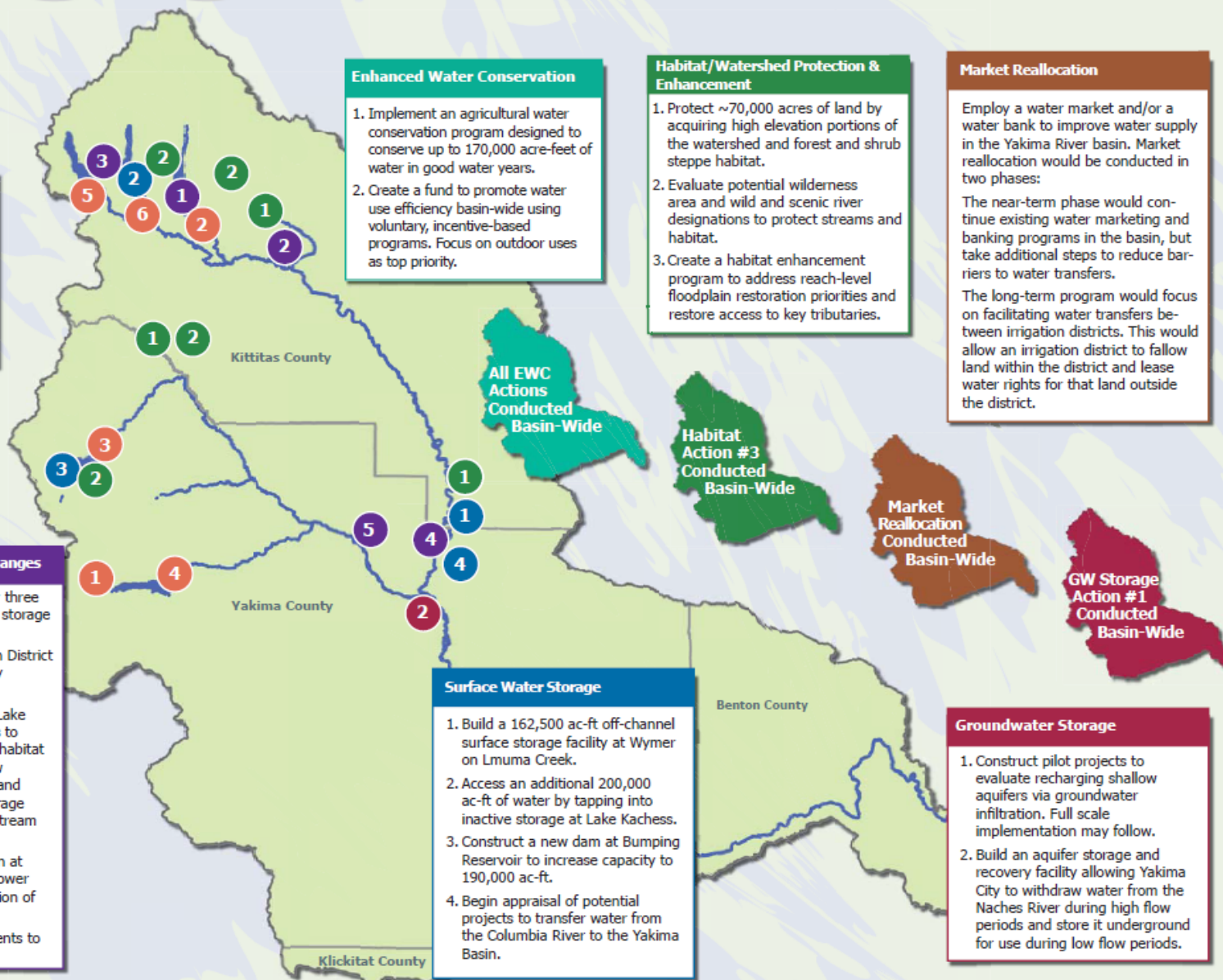
1. Raise the Cle Elum Pool by three feet to add 14,600 ac-ft in storage capacity.
2. Modify Kittitas Reclamation District canals to provide efficiency savings.
3. Construct a pipeline from Lake Keechelus to Lake Kachess to reduce flows and improve habitat conditions during high flow releases below Keechelus and to provide more water storage in Lake Kachess for downstream needs.
4. Decrease power generation at Roza Dam and Chandler power plant to support outmigration of juvenile fish.
5. Make efficiency improvements to the Wapatox Canal.

Surface Water Storage

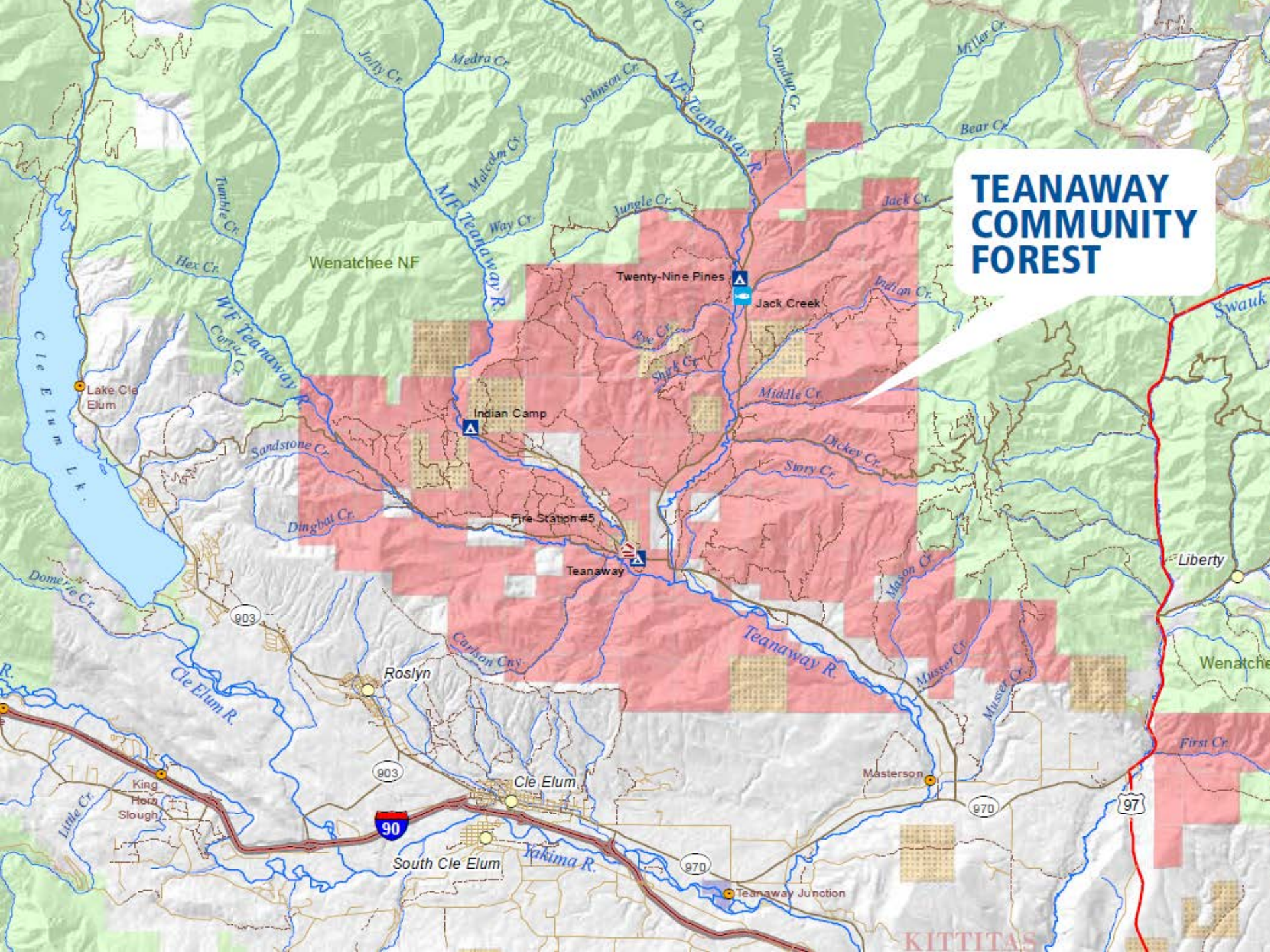
1. Build a 162,500 ac-ft off-channel surface storage facility at Wymer on Lmuma Creek.
2. Access an additional 200,000 ac-ft of water by tapping into inactive storage at Lake Kachess.
3. Construct a new dam at Bumping Reservoir to increase capacity to 190,000 ac-ft.
4. Begin appraisal of potential projects to transfer water from the Columbia River to the Yakima Basin.

Groundwater Storage

1. Construct pilot projects to evaluate recharging shallow aquifers via groundwater infiltration. Full scale implementation may follow.
2. Build an aquifer storage and recovery facility allowing Yakima City to withdraw water from the Naches River during high flow periods and store it underground for use during low flow periods.



TEANAWAY COMMUNITY FOREST

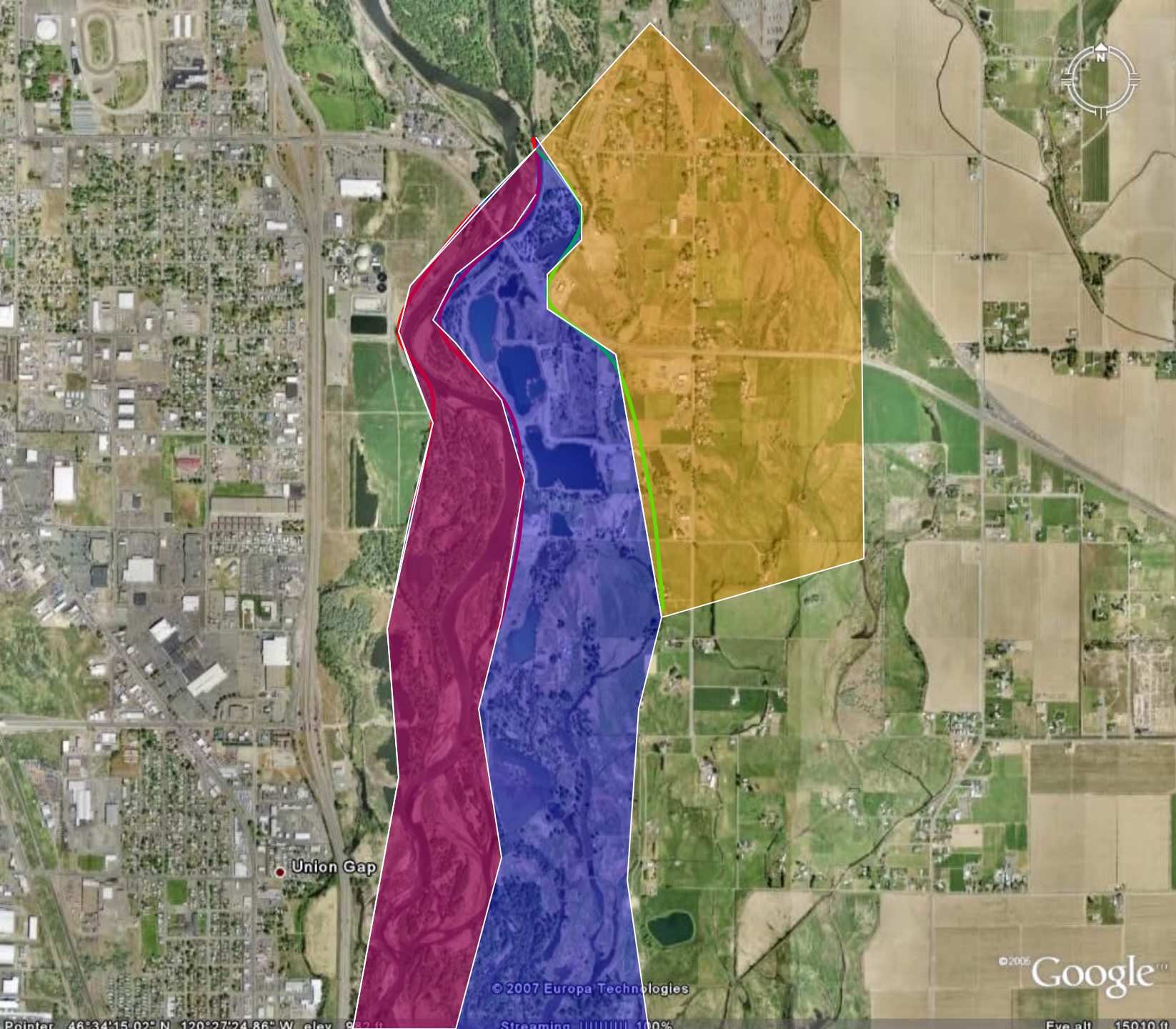


2013 Yakima Basin SRFB Project List (5.19.2014)

Rank	Project	Project Name	SRFB Request	SRFB Total	Other \$s
1	13-1312	Little Rattlesnake Creek Floodplain Reconnection	\$ 360,000	\$ 360,000	\$ 400,000
2	13-1315	Naneum, Wilson, and Cherry Creek Assessment	\$ 254,000	\$ 614,000	
	YBIP	Reed Diversion Removal Design	\$ -	\$ 614,000	\$ 69,000
	KGH	Cle Elum River Side Channel Restoration Phase 2	\$ -	\$ 614,000	\$ 850,000
	COR	Robinson Landing Levee Setback Design	\$ -	\$ 614,000	\$ 124,500
	YBIP	Bateman Island Causeway Conceptual Design	\$ -	\$ 614,000	\$ 100,000
3	13-1310	Bateman Island Causeway Conceptual Design	\$ 109,160	\$ 723,160	
	BLM	Lower Cowiche Floodplain Reconnection, Ph 3	\$ -	\$ 723,160	\$ 67,500
4	13-1309	Lower Cowiche Floodplain Reconnection, Ph 3	\$ 202,675	\$ 925,835	
	RETRACTED	Teaway Forks Large Wood Trapping	\$ -	\$ 925,835	\$ 139,454
5	13-1320	Floodplain Restoration with Beaver Dam Analogs	\$ 56,910	\$ 982,745	
6	13-1322	Ellensburg Water Co - Coleman Creek Intersection	\$ 250,025	\$ 1,232,770	\$ 238,000
	YBIP	Yakima Basin Bull Trout Task Force	\$ -	\$ 1,232,770	\$ 47,640
7	13-1347	Wise Manastash Creek Acquisition & Restoration	\$ 30,680	\$ 1,263,450	
7	13-1347	Wise Manastash Creek Acquisition & Restoration	\$ 161,869	\$ 1,394,639	
8	13-1319	Ahtanum Creek Restoration Survey & Design	\$ 130,000	\$ 1,524,639	
9	13-1318	Naches River Riparian and Side Channel Design	\$ 84,730	\$ 1,609,369	
10	13-1311	Yakima Beaver Project, Phase 2	\$ 20,000	\$ 1,629,369	\$ 175,850
					\$ 2,211,944

Funding Sources:

Salmon Recovery Funding Board
Salmon Recovery Funding Board - Alternate Projects
Yakima Basin Integrated Plan
Kennewick General Hospital Mitigation Funds
Bureau of Land Management - Cowiche Creek
Corps of Engineers
Retracted by Sponsor
McNary Mitigation Fund



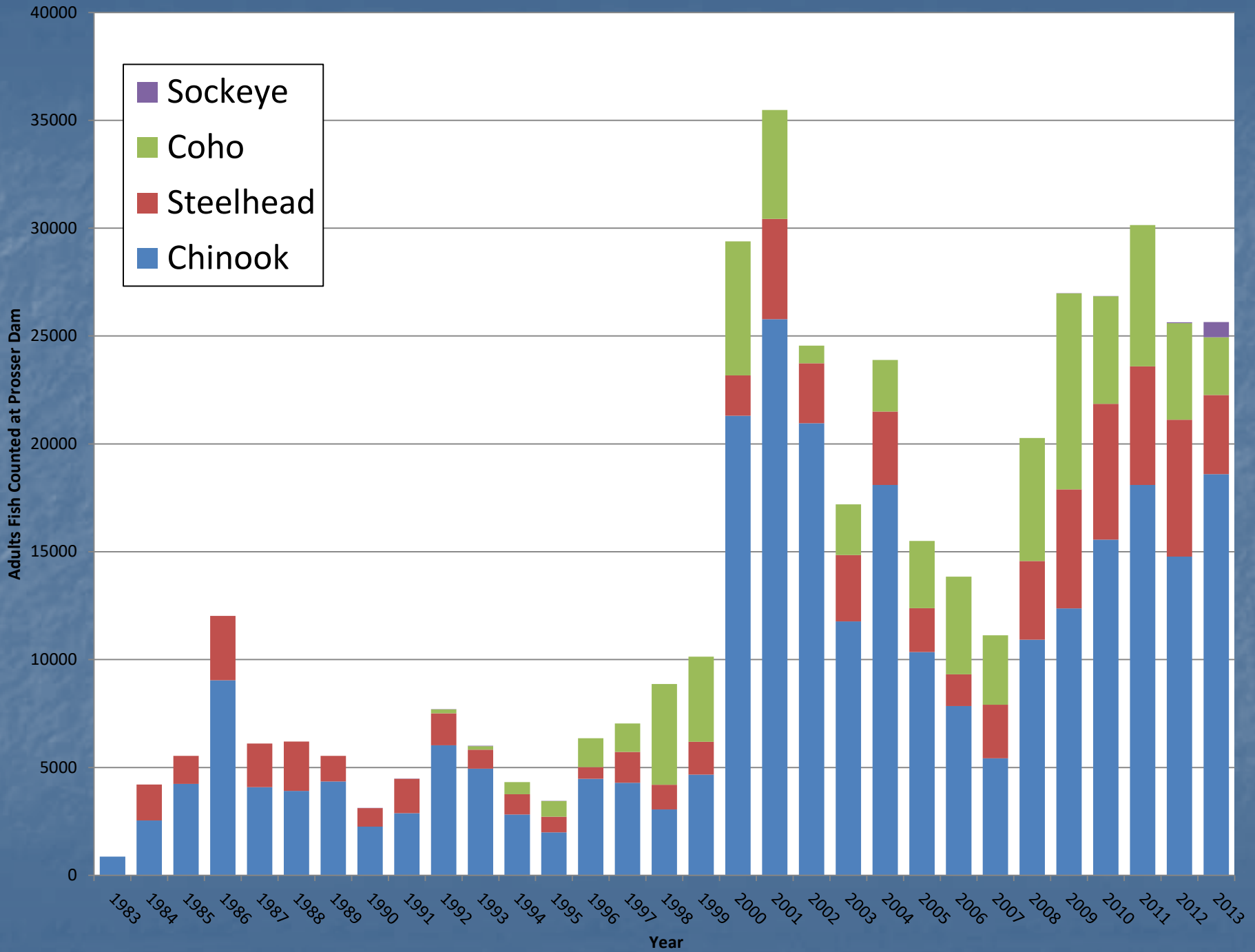
Union Gap

© 2007 Europa Technologies

© 2006 Google™



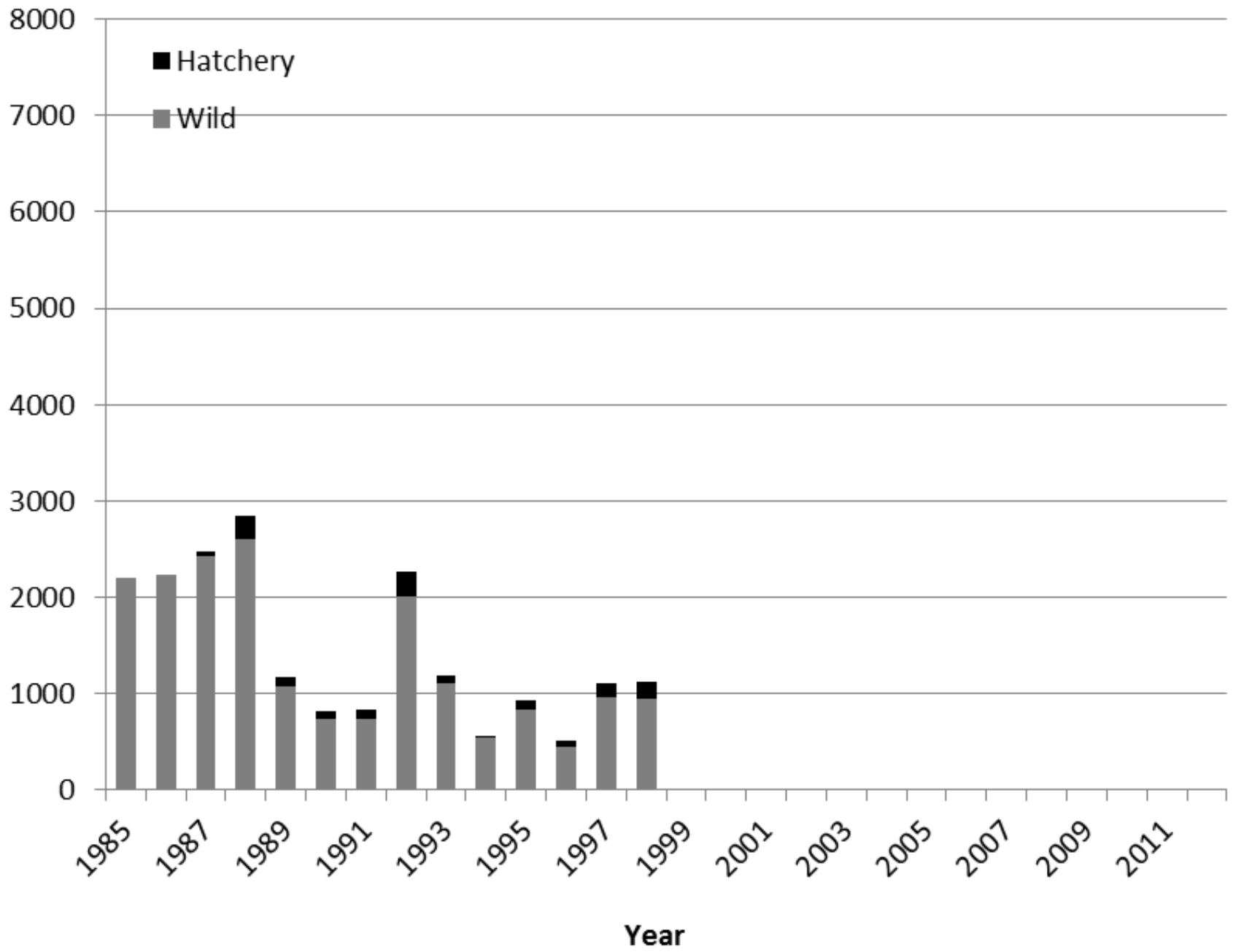




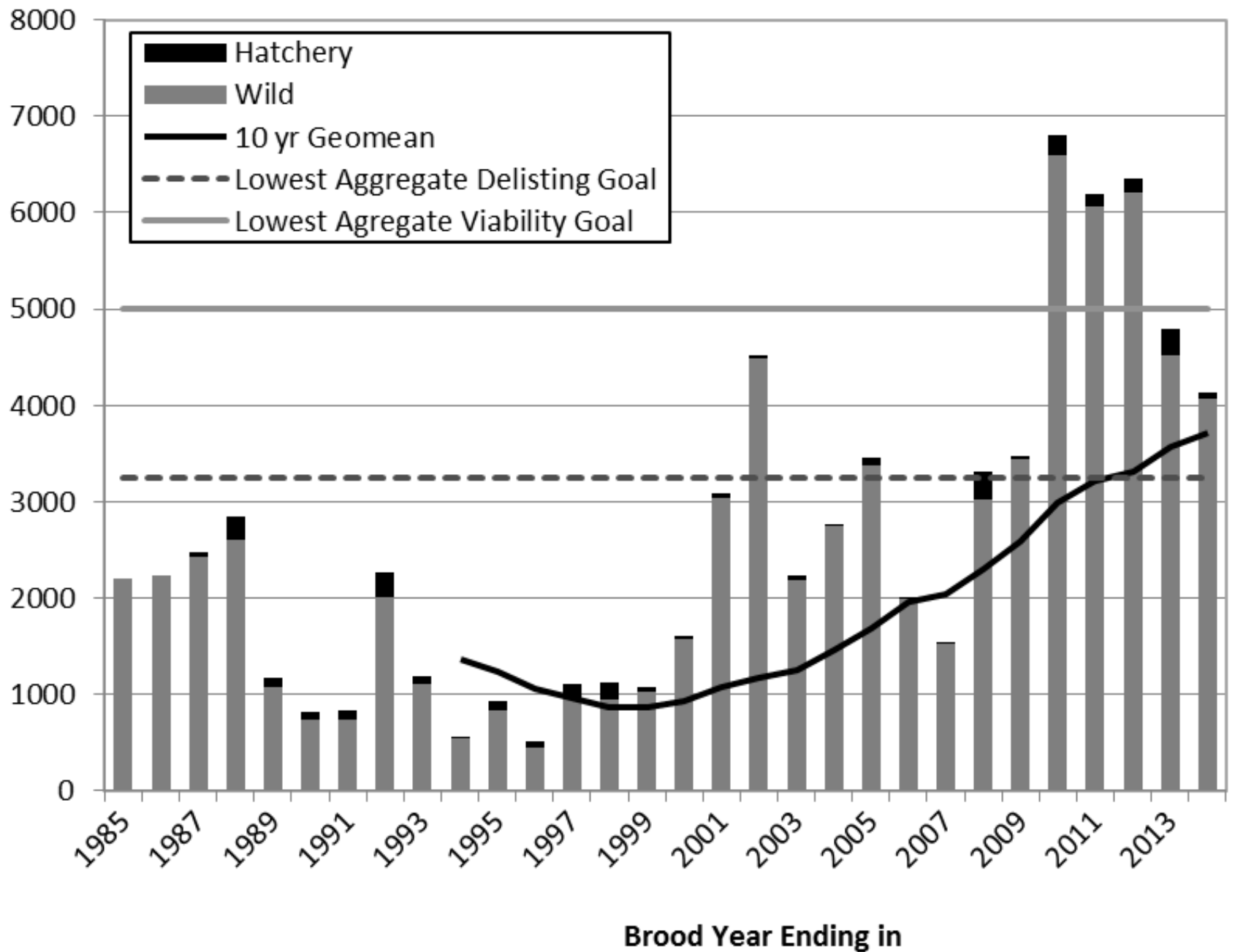
Sockeye Return!



of Adult Steelhead passing Prosser



of Adult Steelhead passing Prosser



UPPER YAKIMA STEELHEAD ABUNDANCE

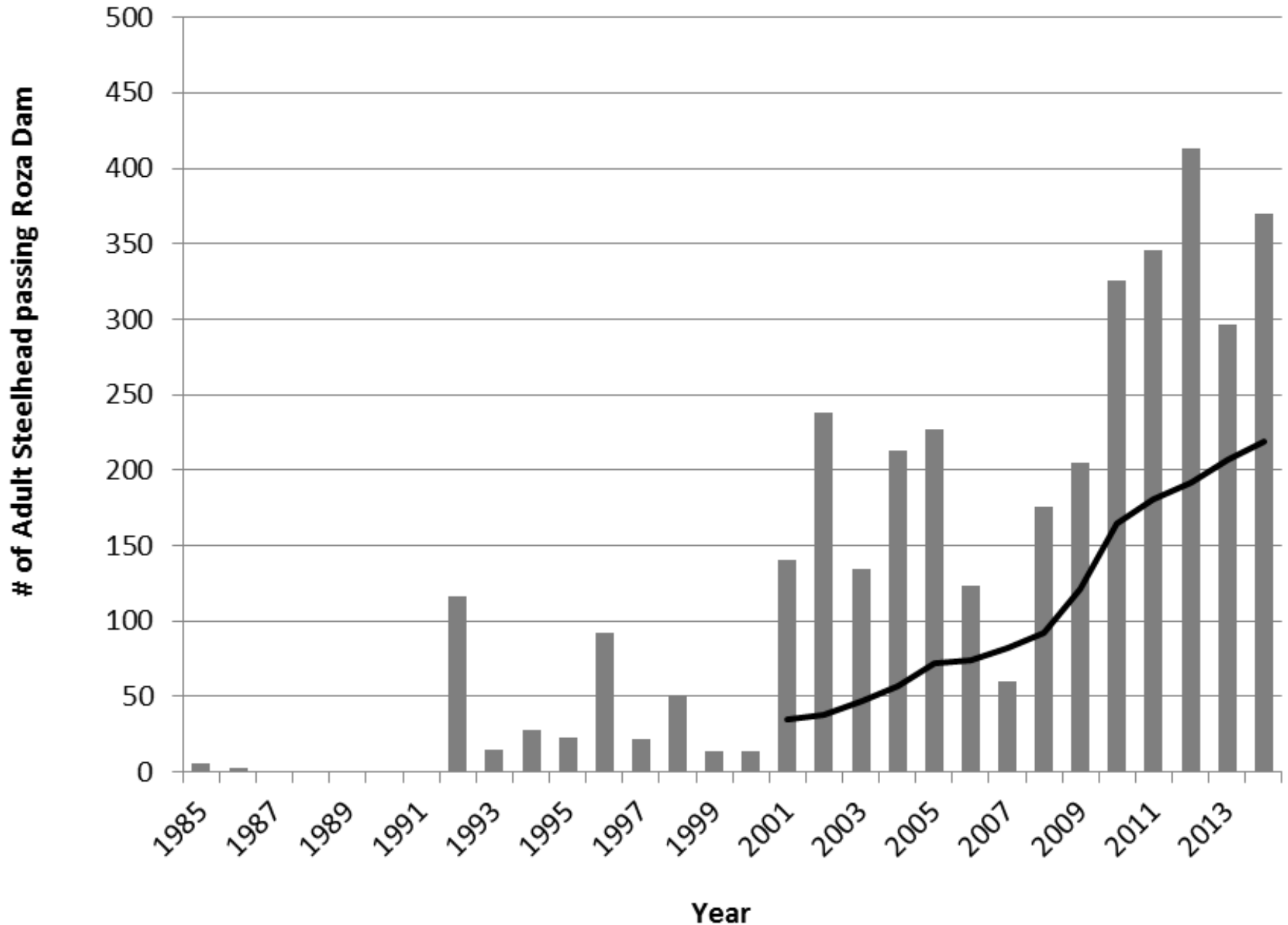


Table 1: VSP Parameter risk ratings for Yakima steelhead populations (adapted from ICTRT 2007). Yakima steelhead MPG risk summaries from 1999 status review¹ and 2011 5-year status review²

		Spatial Structure / Diversity Risk			
		Very Low	Low	Moderate	High
Abundance / Productivity Risk	Very Low (<1%)	HV	HV	V	M
	Low (1-5%)	V	V	V Toppenish, Satus ²	M
	Moderate (6 – 25%)	M	M	M Toppenish, Satus ¹ Naches ²	
	High (> 25%)			Naches ¹	Upper Yakima ¹ , Upper Yakima ²

How do we evaluate progress
towards Delisting?