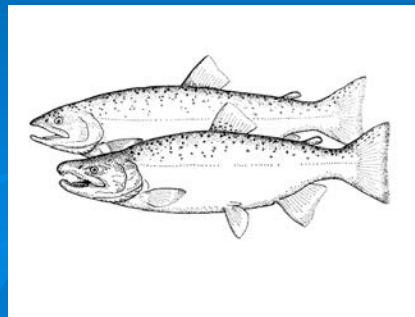


Yakima Side Channels Project

Habitat for Fish

Kelly Clark

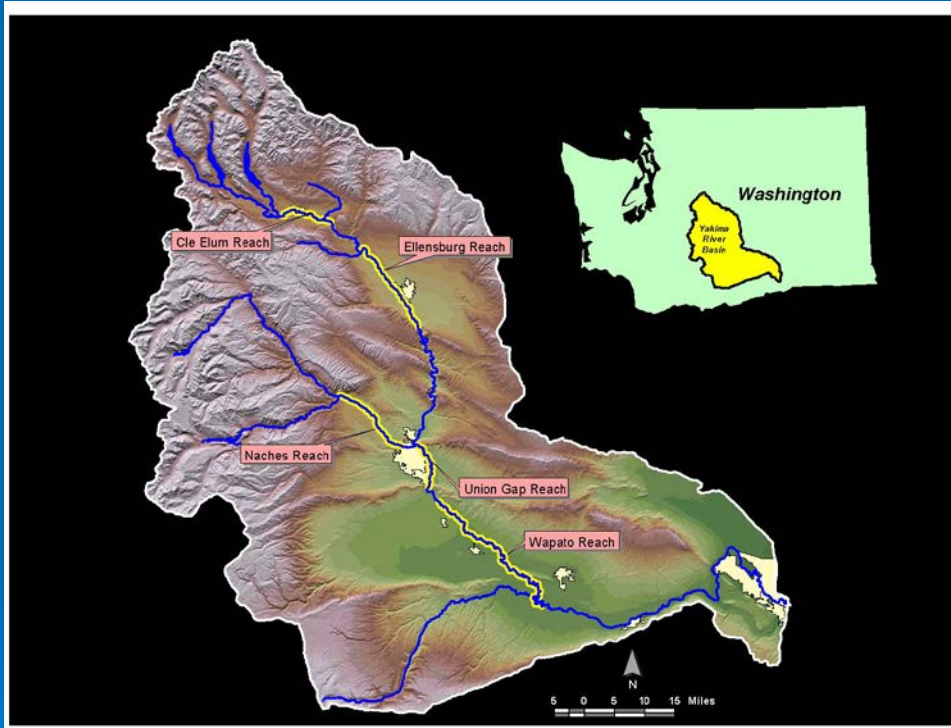
YKFP Habitat Biologist



Yakima Side Channels

- The Yakima Side Channels (YSC) Project was initiated in '97 and is co-managed by WDFW and the Yakama Nation as part of the Yakima-Klickitat Fisheries Project (YKFP).

- The project's aims to protect high value floodplain containing healthy and functional side channel, wetland, and riparian forest habitats.



Priority Reaches –Easton/Cle Elum, Kittitas, Naches, Union Gap, & Lower Naches

YSC Project Criteria

- Habitat acquisition criteria:
 - have a willing seller;
 - characterized by self-maintaining complexity/ability for future complexity with achievable restoration actions;
 - contain or support prime spawning and/or rearing habitat; and
 - critical habitat for listed Mid-Columbia steelhead.
- Preference is also given to properties that have a water right, and/or are adjacent to protected lands.

YSC Project Status



Dixon Property near
Cle Elum

- Phase 1 the project goal is to protect 2,000 acres of the most productive mainstem and side channels habitat within the priority reaches by 2006.
- Phase 2 will extend the protection of high value anadromous fish habitat within the basin after the completion of Phase 1.

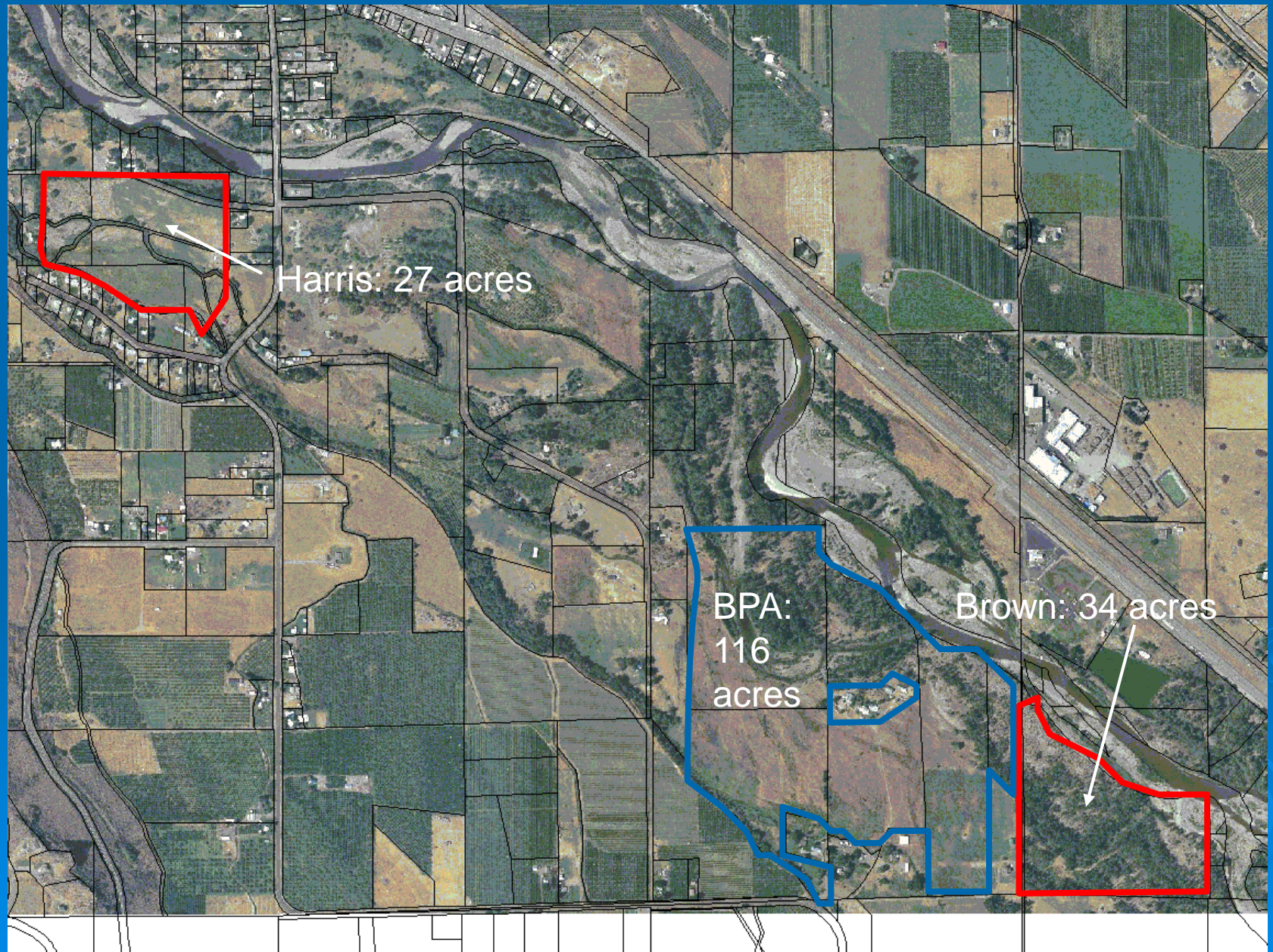
Project Success



Scatter Creek Side Channel near
Cle Elum.

- **Protected 930 acres** of high value habitats in four priority reaches.
- YSC has generated over **\$1 million** in matching, non-BPA funds for habitat acquisitions.
- Partnered on several restoration projects (e.g., Hanson Ponds).

Naches River Properties



Naches

Harris Property

Funded by SRFB &
WWT



Naches

Harris Property

Chuck Harris



**Charles Harris Property
(In white outline)**

South Naches Channel



Scott Ditch

Ireland Ditch

Naches River

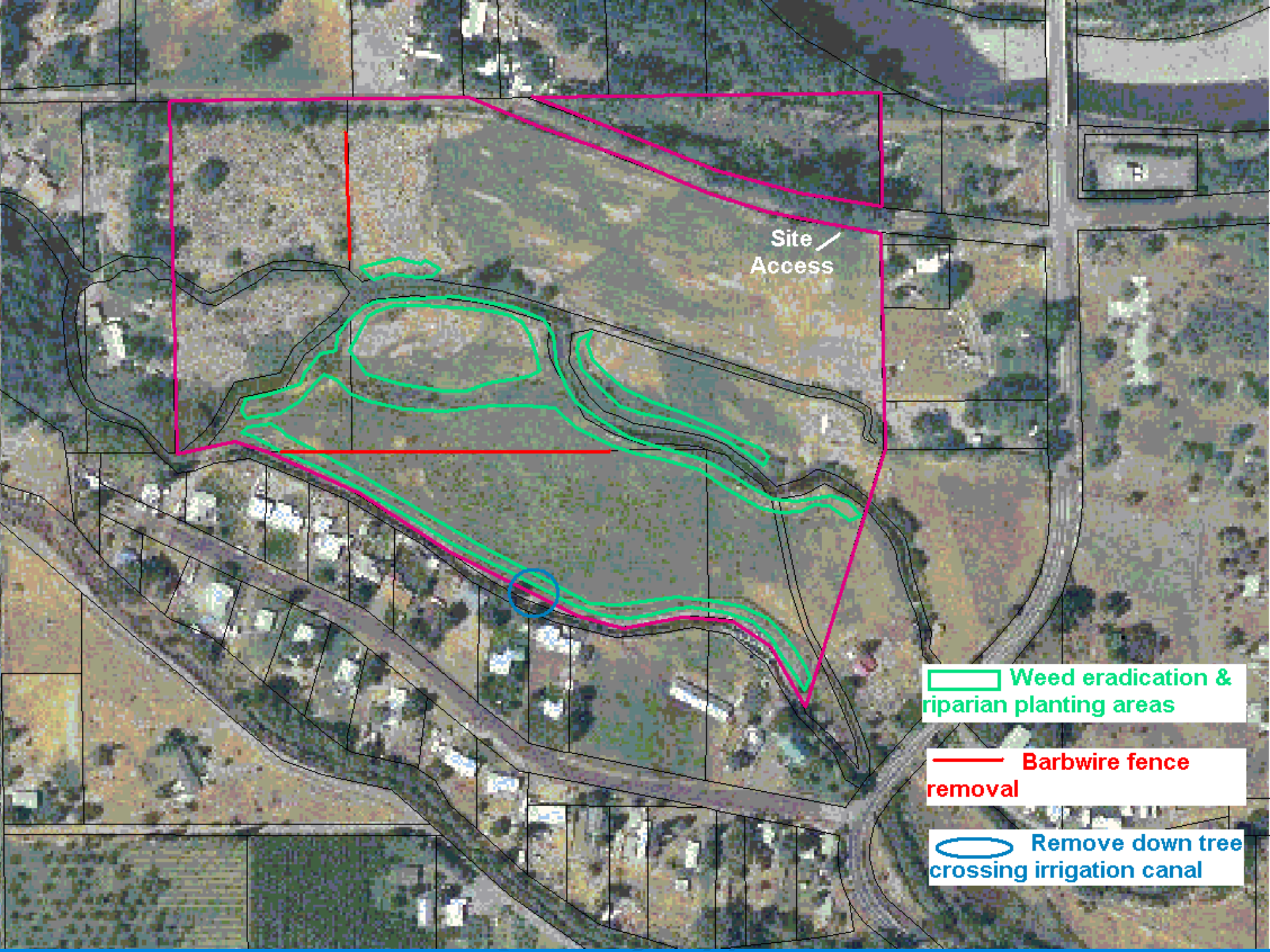
Powell/LaFortune Ditch

Lewis Ditch





Existing Conditions





Site
Access

 Weed eradication & riparian planting areas

 Barbwire fence removal

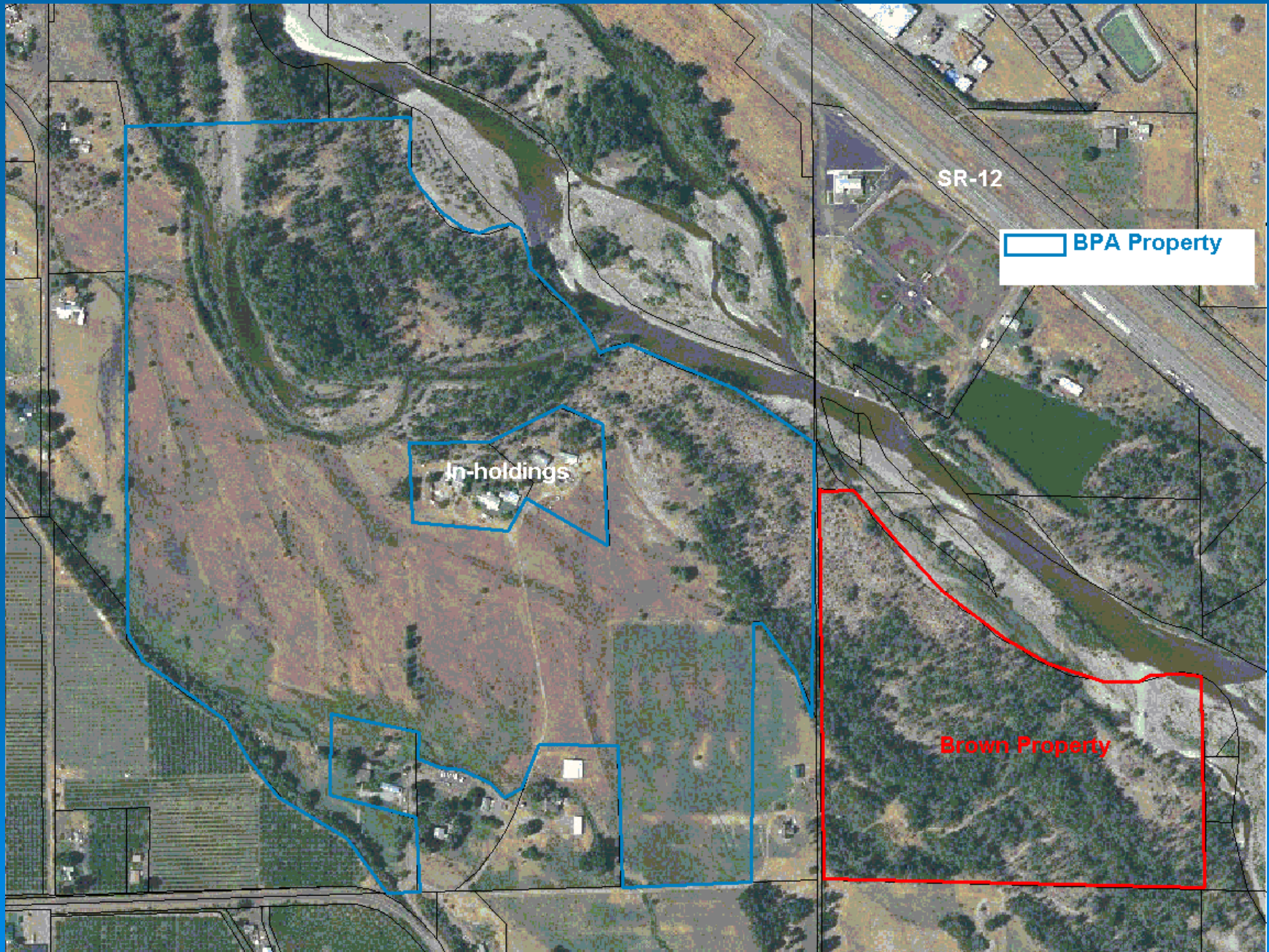
 Remove down tree crossing irrigation canal

Harris Re-vegetation Project





Lower Naches Properties



Lower Naches Properties

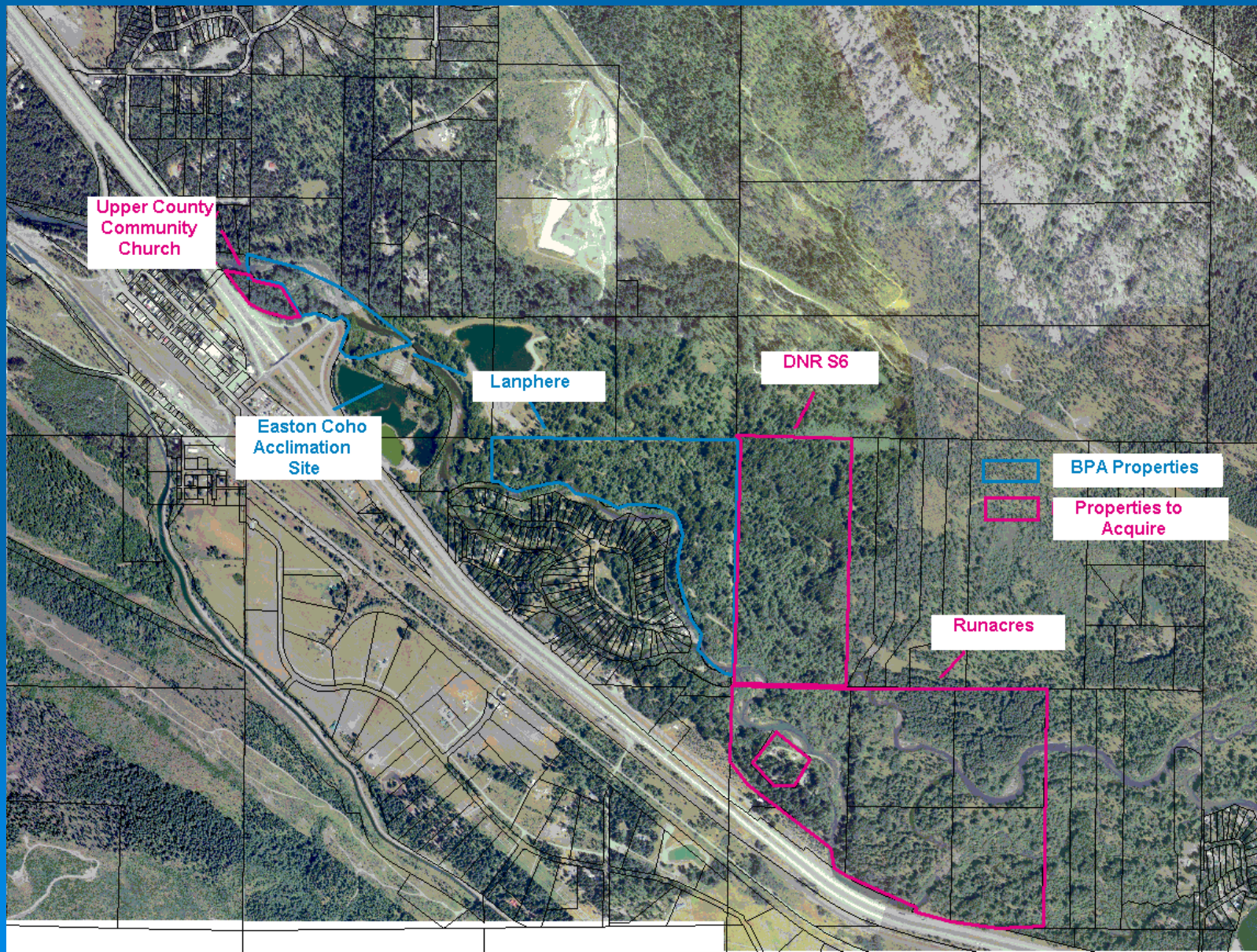




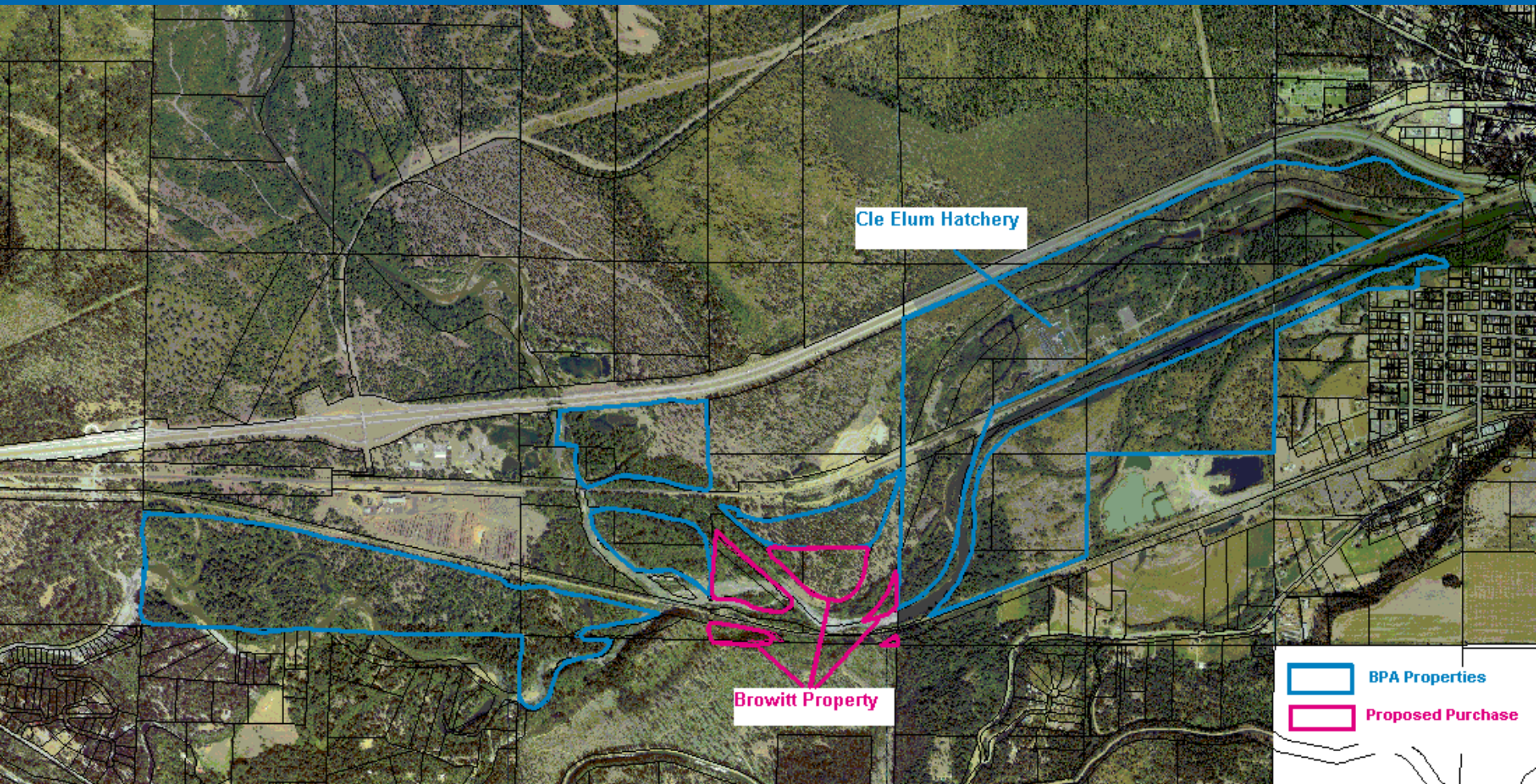
Next Tasks

- Purchase **six properties** totaling **377 acres**.
- **Problem:**
- YKFP has been planning to acquire several additional parcels from private landowners for the YSC project.
- BPA placed a hold on habitat purchases in December of 2002. Although the hold has now been lifted, capital acquisitions are now stalled because a crediting mechanism has not been adopted.

Easton Reach Properties



Cle Elum Reach Properties

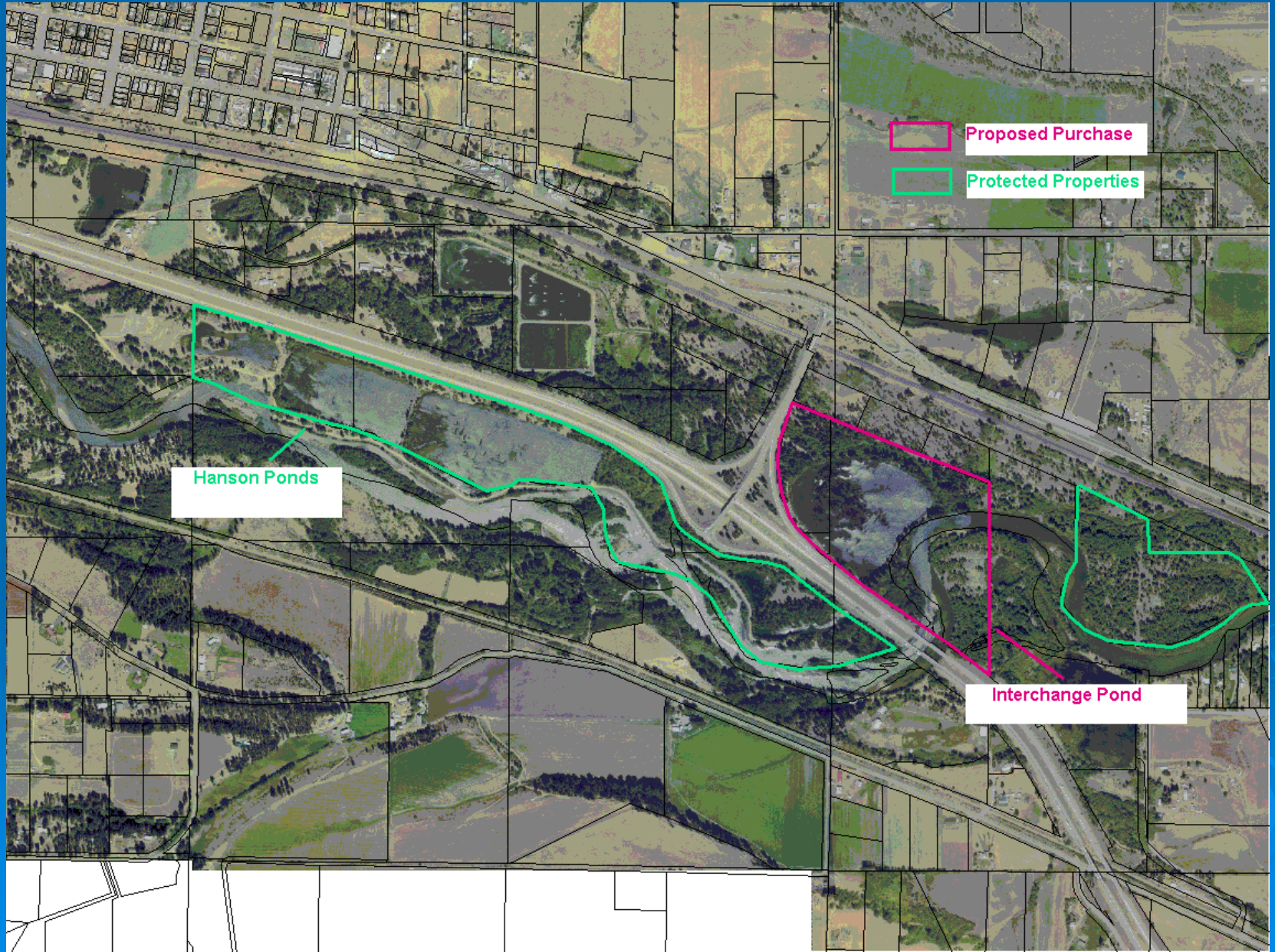


Cle Elum Hatchery

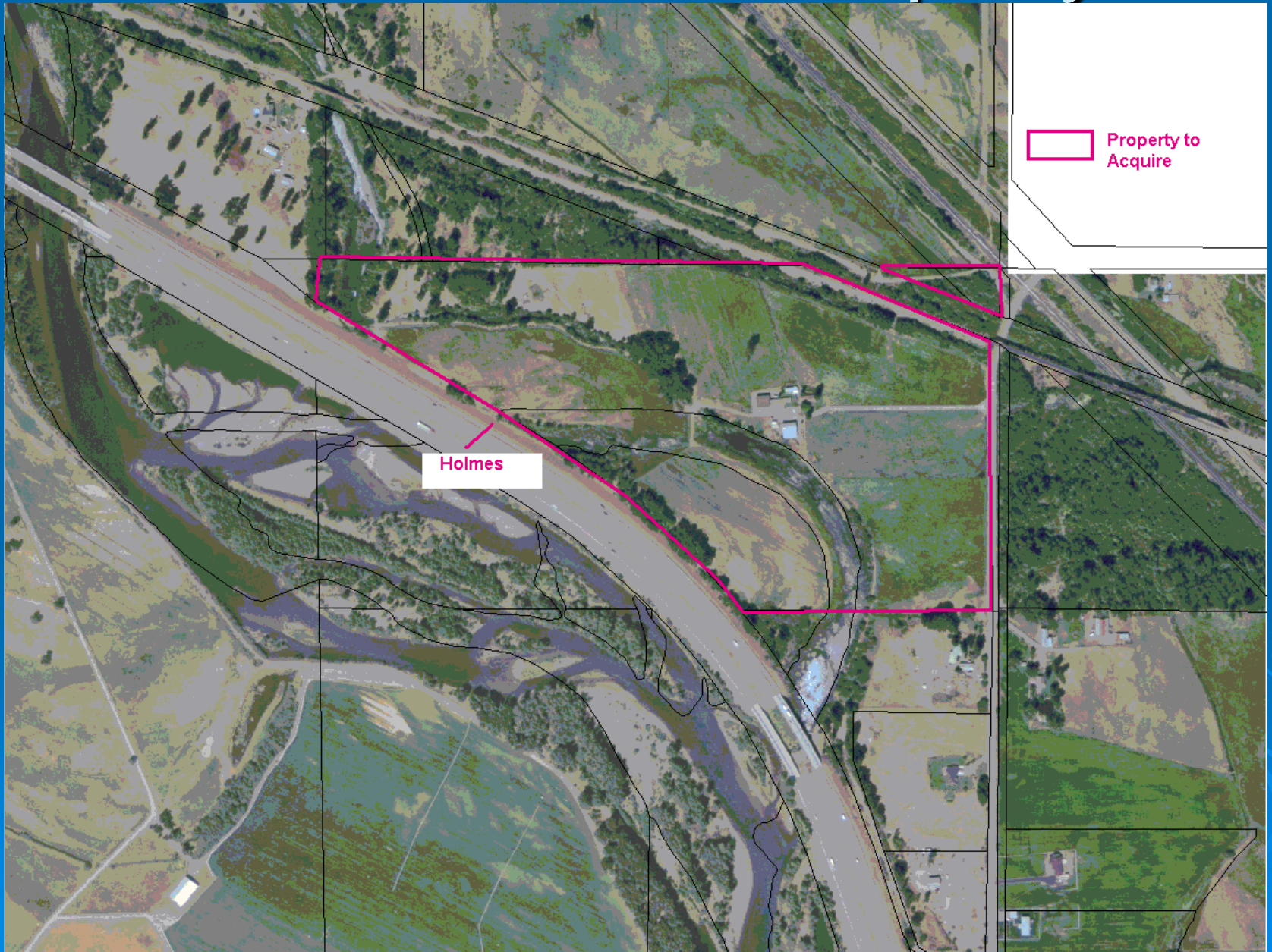
Browitt Property

-  BPA Properties
-  Proposed Purchase

Cle Elum Reach Properties cont.



Kittitas Reach Property





FOR SALE
1.34 ACRES 119' RIVERFRONT
1-425-444-0103 \$ 89,000



CLE ELUM AREA
LAND FOR SALE
ACREAGE
1-888 811-6515
www.prorealestate.net
Professional Real Estate & Land Company

Immediacy of Threat to the Habitat



KEEP OUT
RESTRICTED AREA



RIVERFRONT
FOR SALE
208-896-5049

Risk and Lost Opportunities



- **Growth pressure** is causing land values to escalate, which increases project expenses.
- In 2002, **\$1.5 million dollars** was allocated to the YSC project for habitat acquisitions. This funding has yet to be expended.
- Habitat crediting and prior fiscal challenges have stalled this project for two years. Meanwhile, prudent habitat protection opportunities are being lost.

Strategies to further YSC work

➤ FUNDING!!!

- Utilize approved BPA habitat acquisition funds.
 - Secure adequate O&M funding
- ## ➤ Expand landowner outreach and support
- ## ➤ Continue coordination and partnerships with agencies and organizations

Questions

