

**“It’s the End of the World as
We Know it”**

By Ken Bevis

WDFW

Land ownership changes in Kittitas & Yakima Cos.



A Land of Many Habitats and Recreational Opportunities



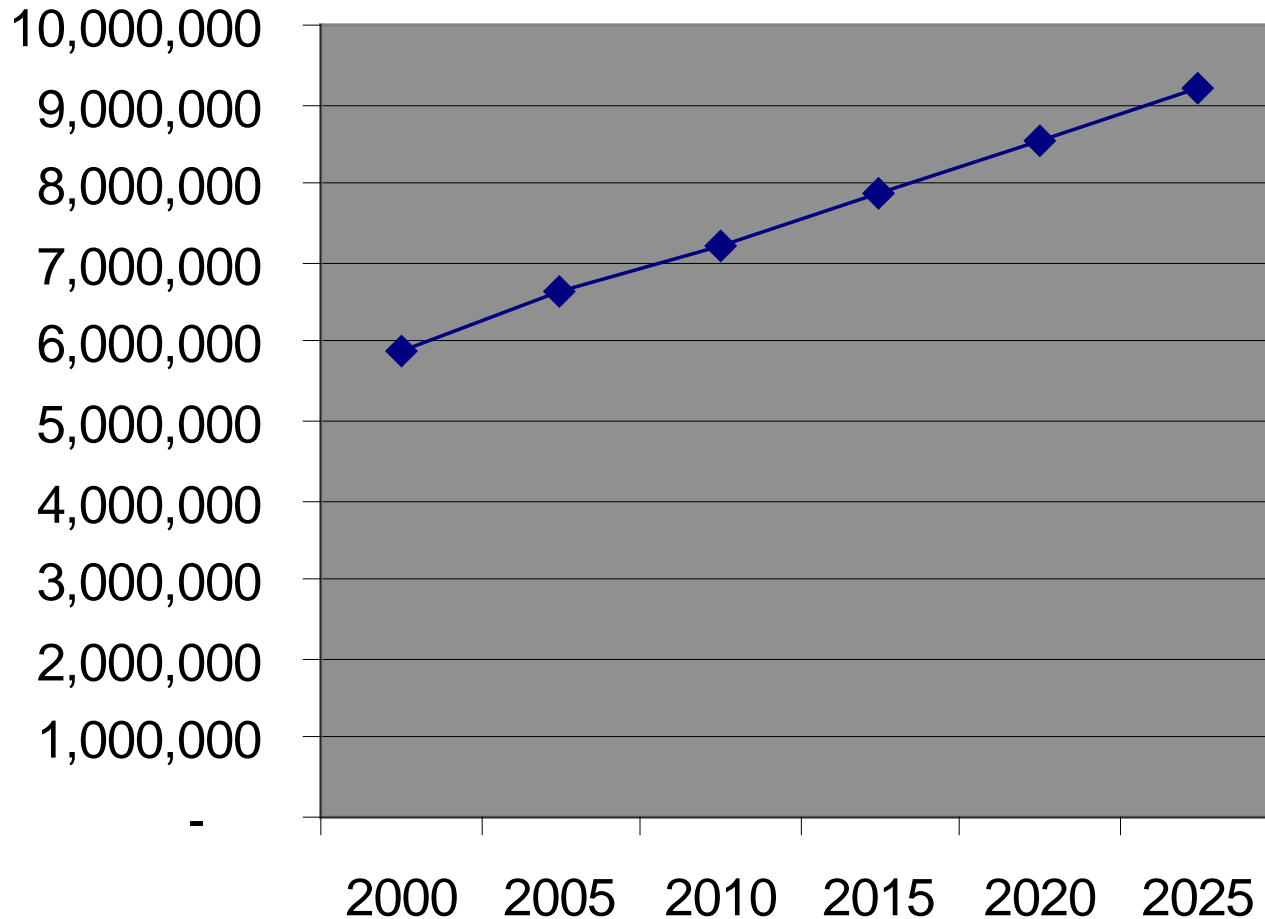


U.S. Population

296,076,824

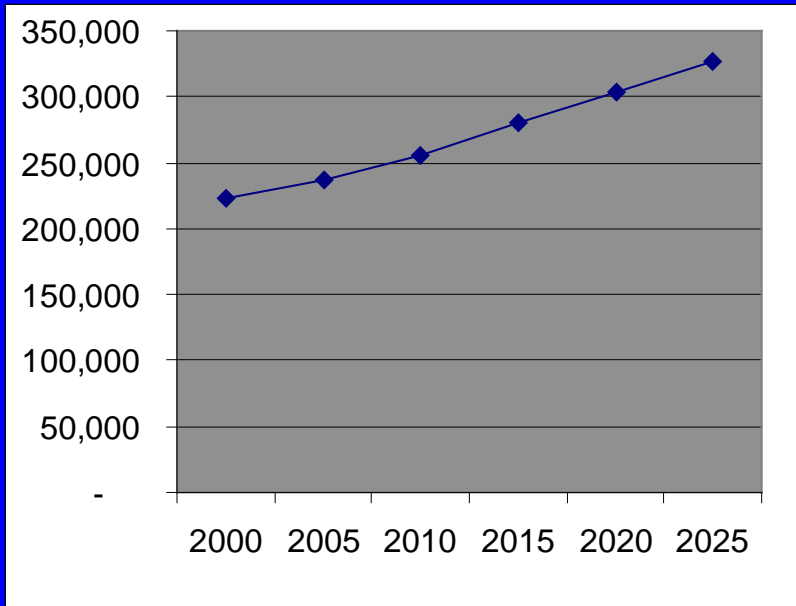
*05/09/05 at 23:59 GMT
(source: US Census Bur.)

Washington is Growing

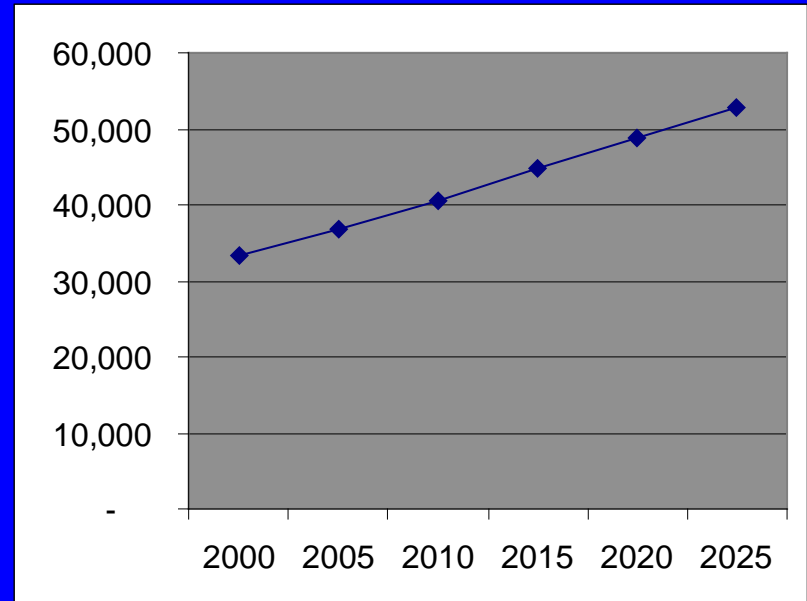


Washington Human Population* (source WA State Office Of Financial Management)

Kittitas And Yakima Population



Yakima County*



Kittitas County*

Old Occupations



Ownership changes Happening



- **Land Trades –**
 - WDFW/ DNR
 - DNR/ Plum Creek
- **Teanaway – BCC to UST to AFR**
- **BCC to Forest Cap to Blixeth**
- **Plum Creek sales**
 - Suncadia
 - Sapphire Skies
 - *Others



Where is this?

Dispersed Development





Outcomes



- **Lost Habitats – including big game winter range**
- **Lost Recreational opportunity and Access**
- **Increased conflict with wildlife**

Others....

Lost Habitats



At Risk – Wild land Access



Bell Creek near Cle Elum

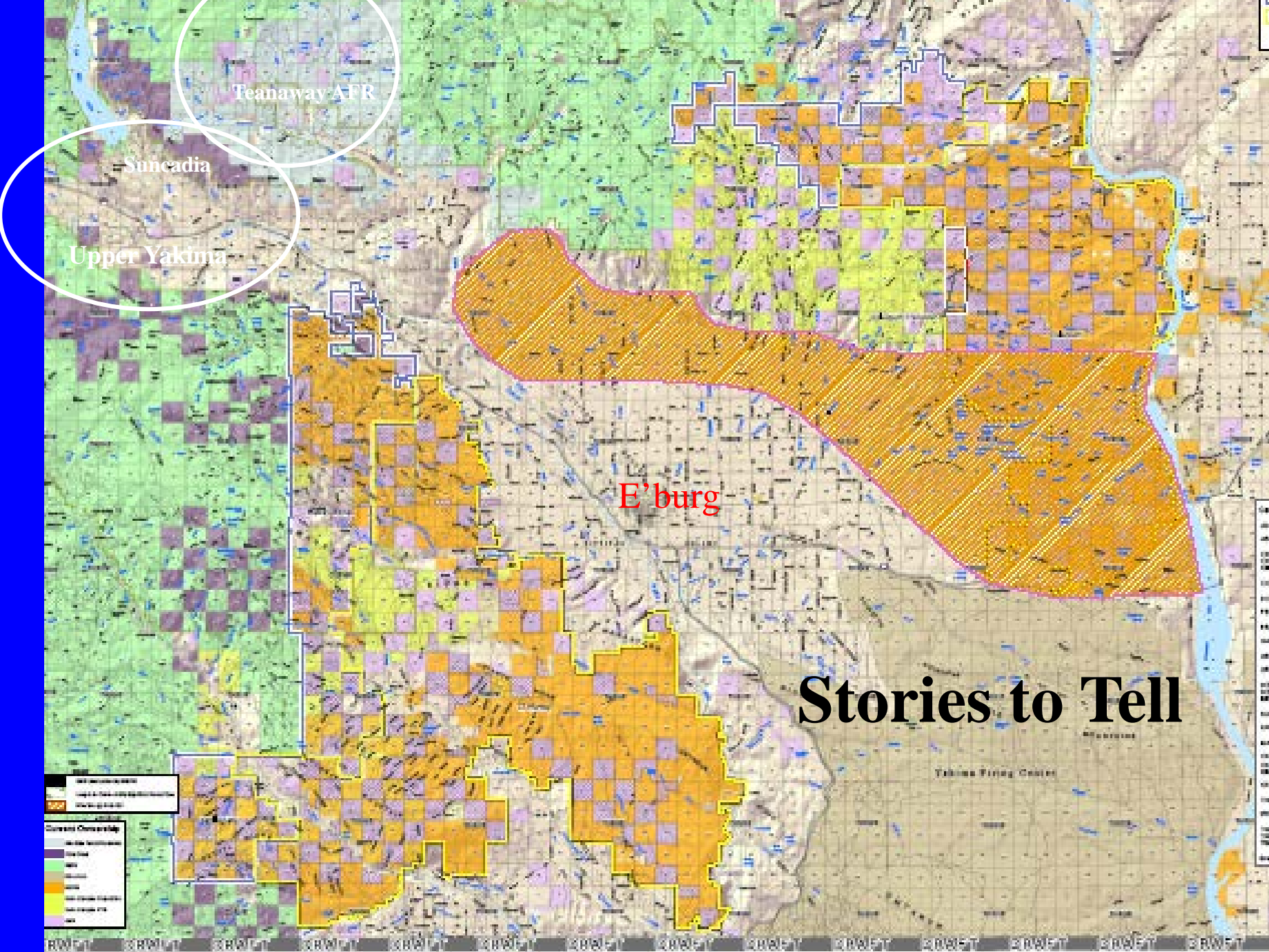


Cooperative Road Management Systems



Wildlife Conflicts





Stories to Tell



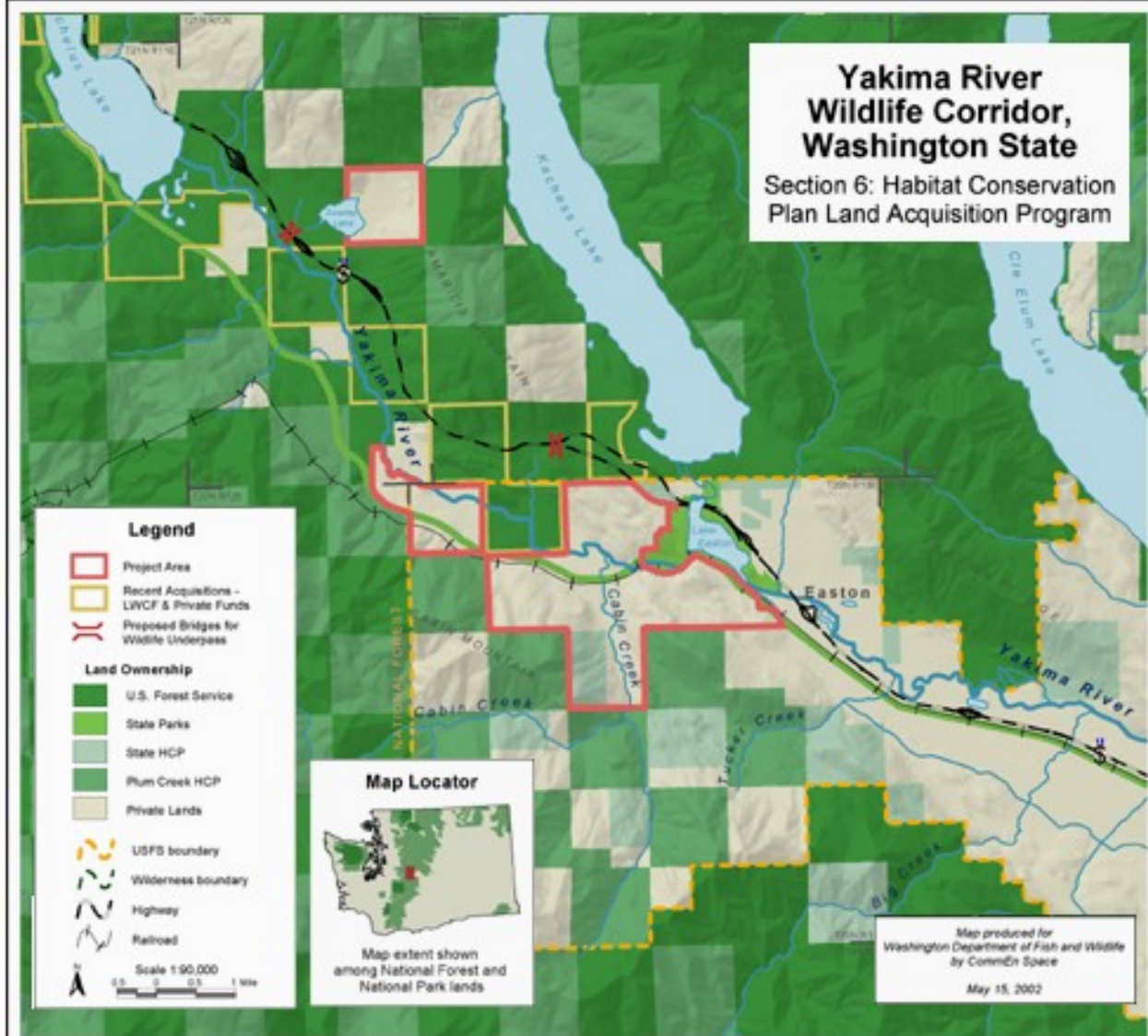
Connectivity Map

Maps identifying optimum parcel arrangements were produced based on individual species or species group dispersal maps. These maps were used throughout the land exchange process, and parcels within each of the three corridors were prioritized for use in further negotiations.



Upper Yakima Project

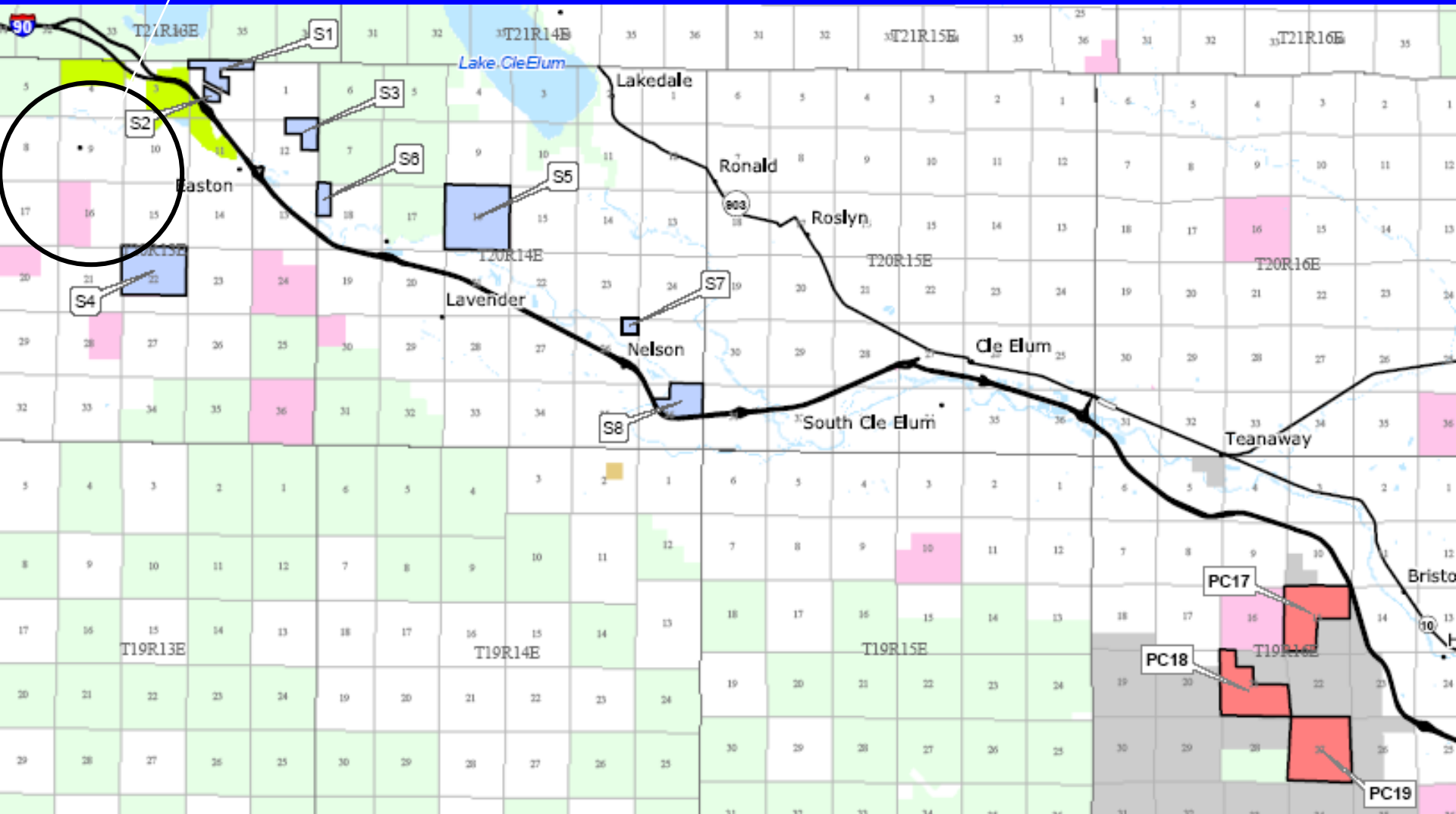
THE CASCADES CONSERVATION PARTNERSHIP





Upper Yakima Area

Upper Yakima Project



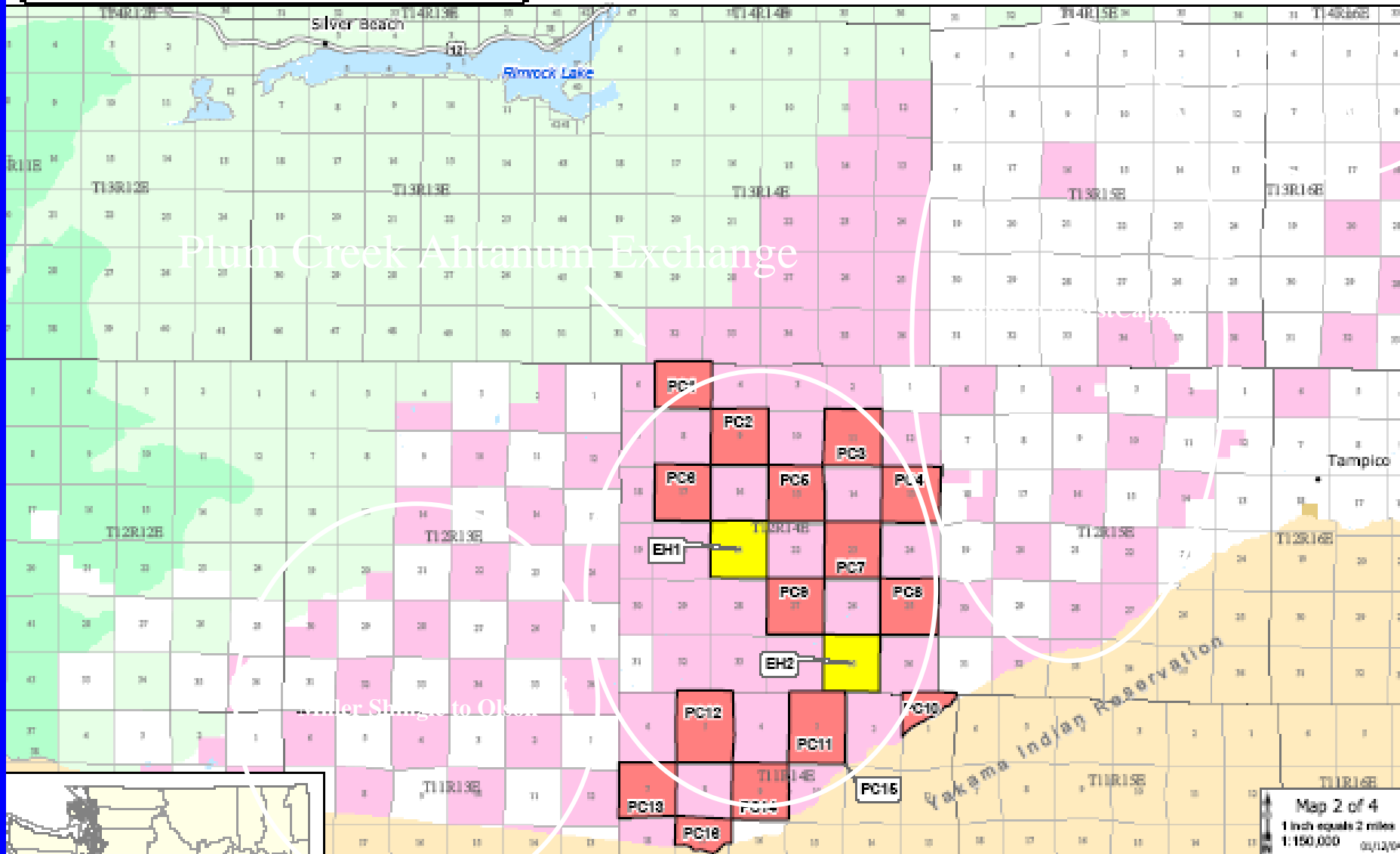
Upper Yakima DNR Land Trade – just approved.

Blue = to Plum Ck, Red = to DNR

Ahtanum Exchange Concept (November 2003)

- Elk Haven Parcels - Exchange Candidates
- Plum Creek Parcels - Exchange Candidates

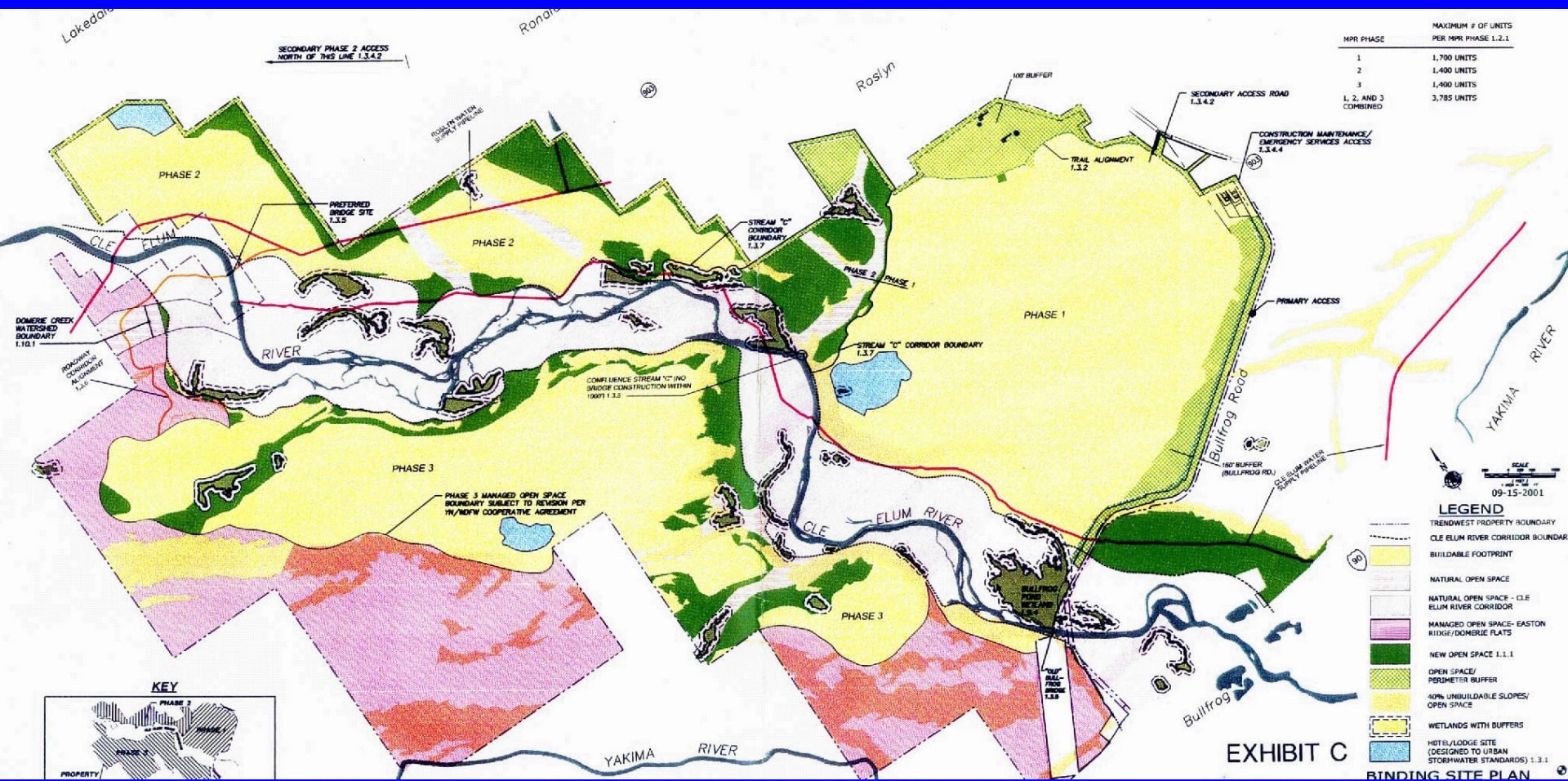
Yakima County Parcels

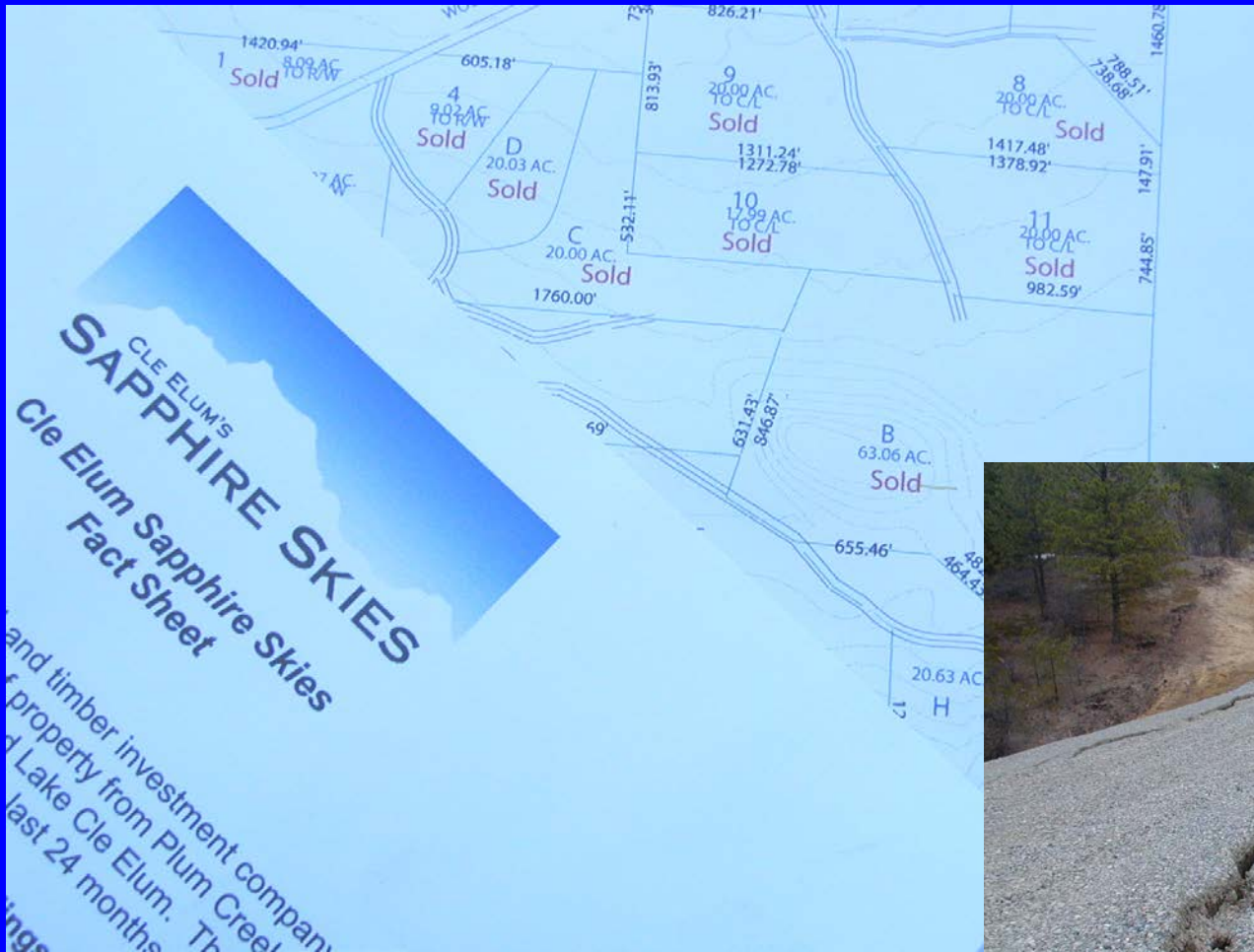


Plum Creek Ahtanum Exchange

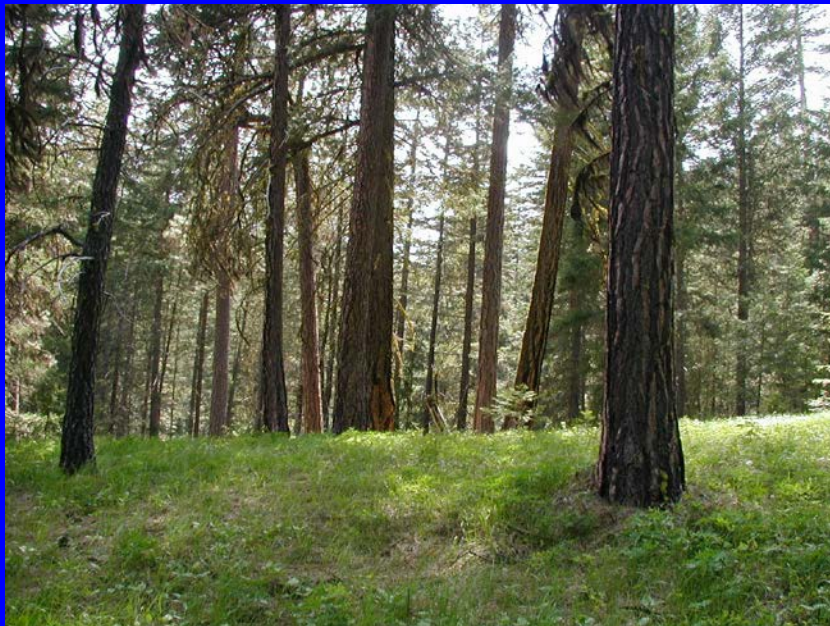
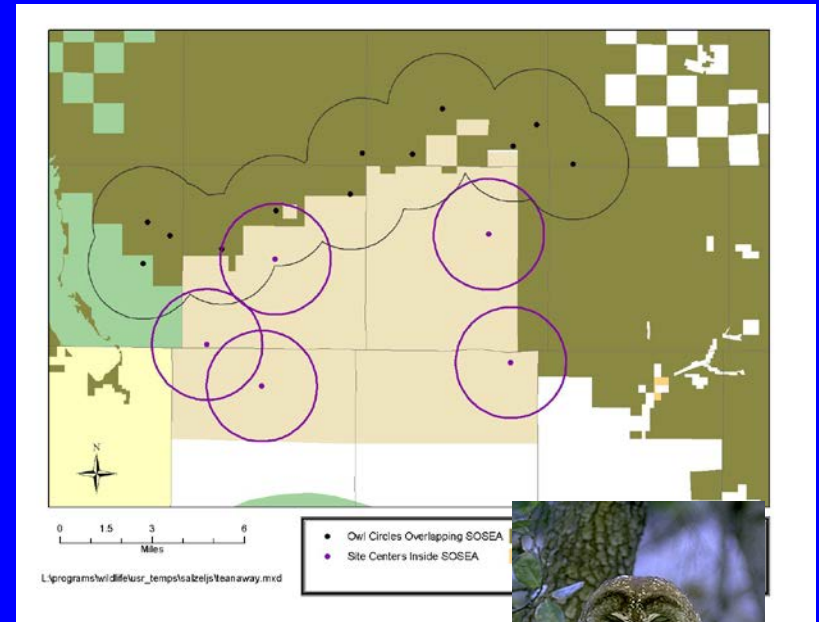
(The Resort formerly known as Mountainstar)

SUNCADIA

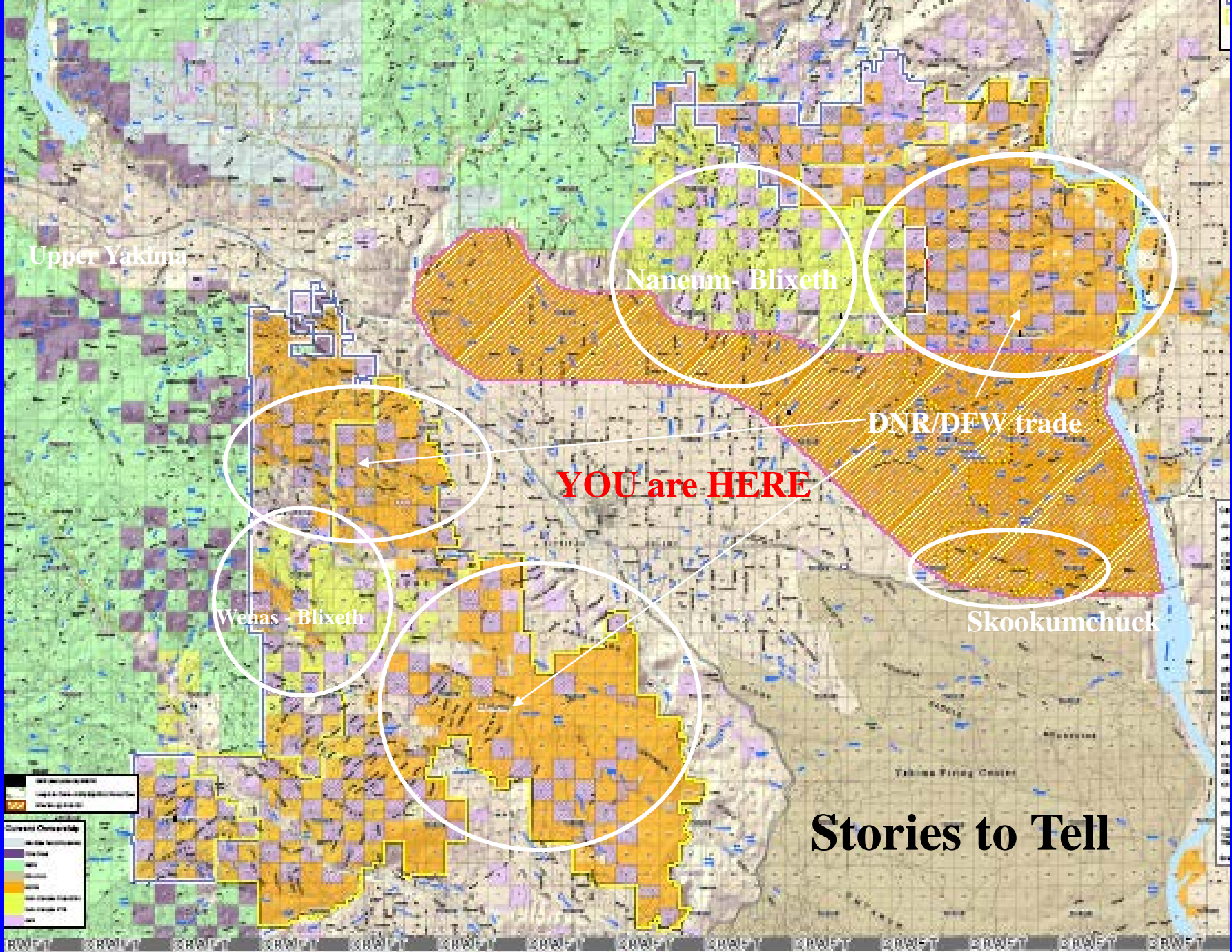




**Former Plum Creek:
 All around Cle Elum and Roslyn**



**Teanaway –
Boise to U.S. Timberlands to
American Forest Resources to.... ?**

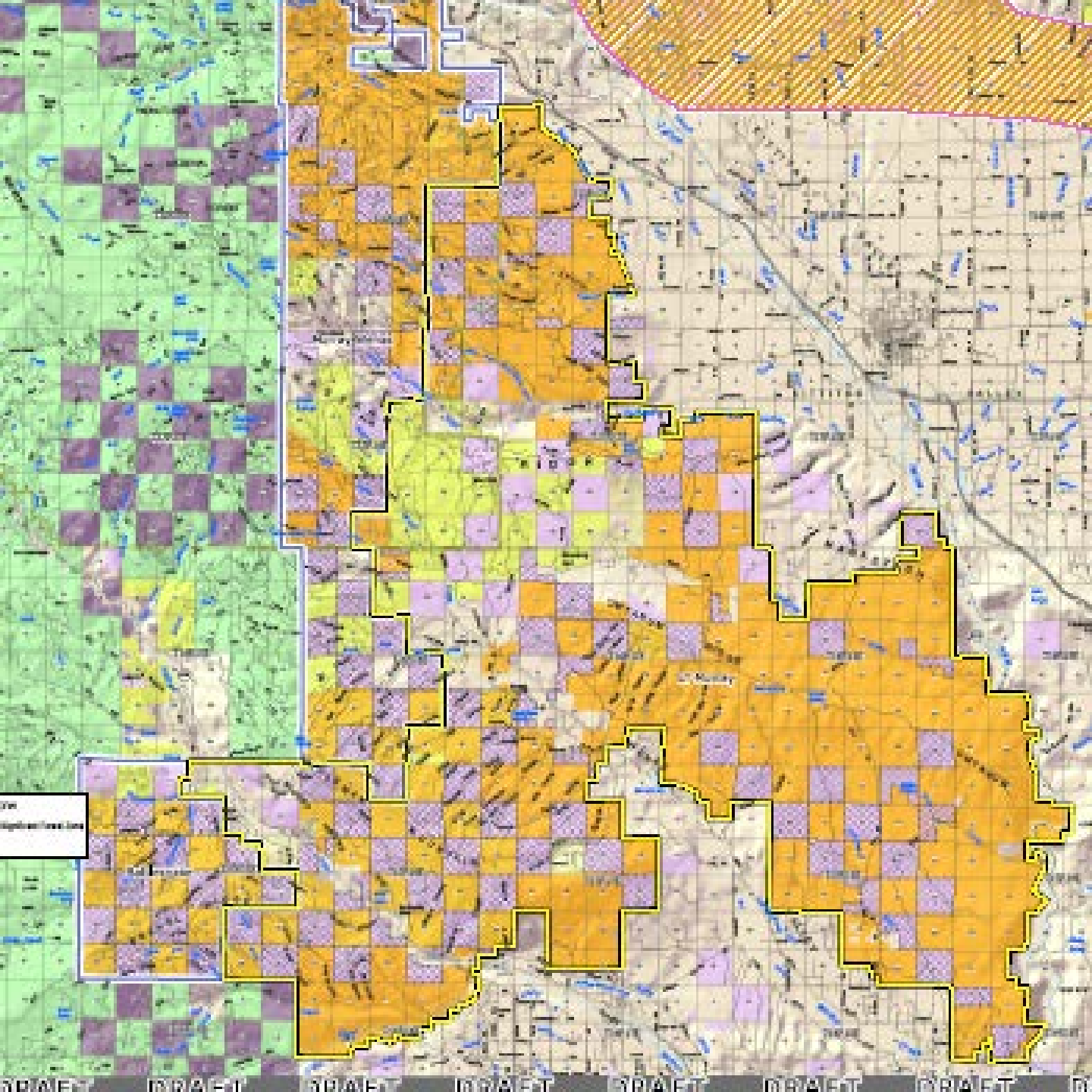




Forests

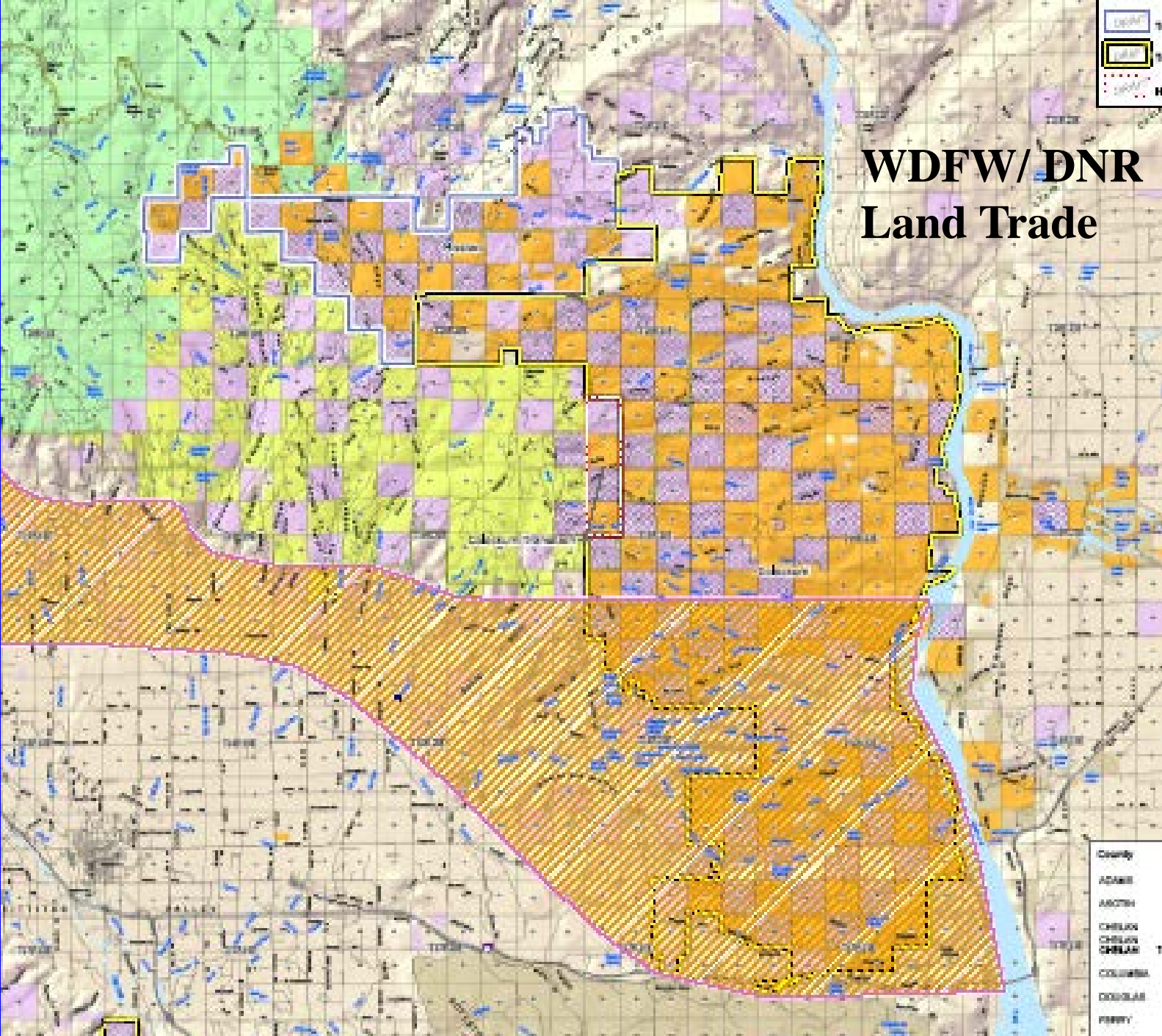


Shrub Steppe



**WDFW/ DNR
Land Trade**

WDFW/DNR Land Trade



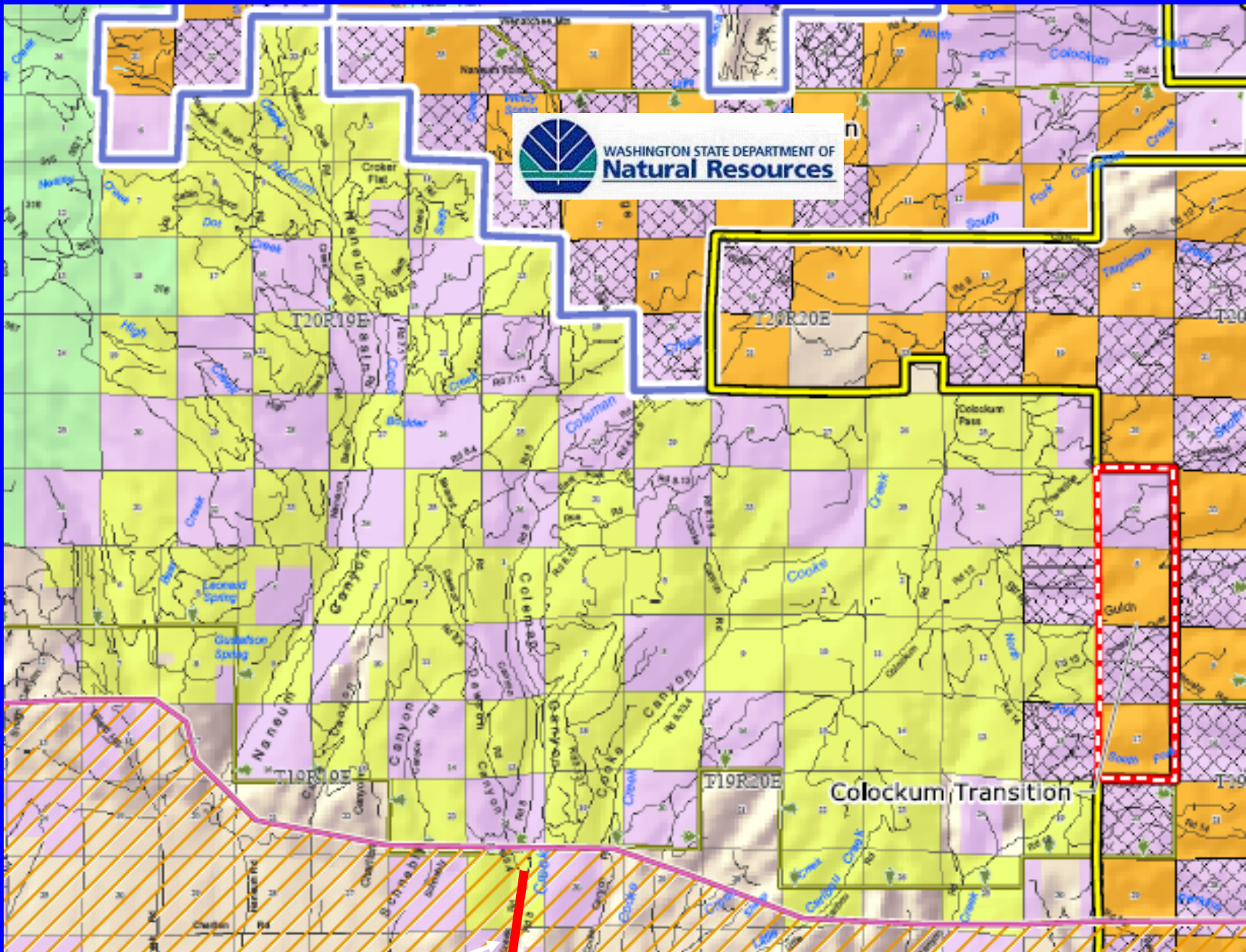




**Skookumchuck Lands
Wild Horse Wind Proposal**



Boise Cascade no more.....

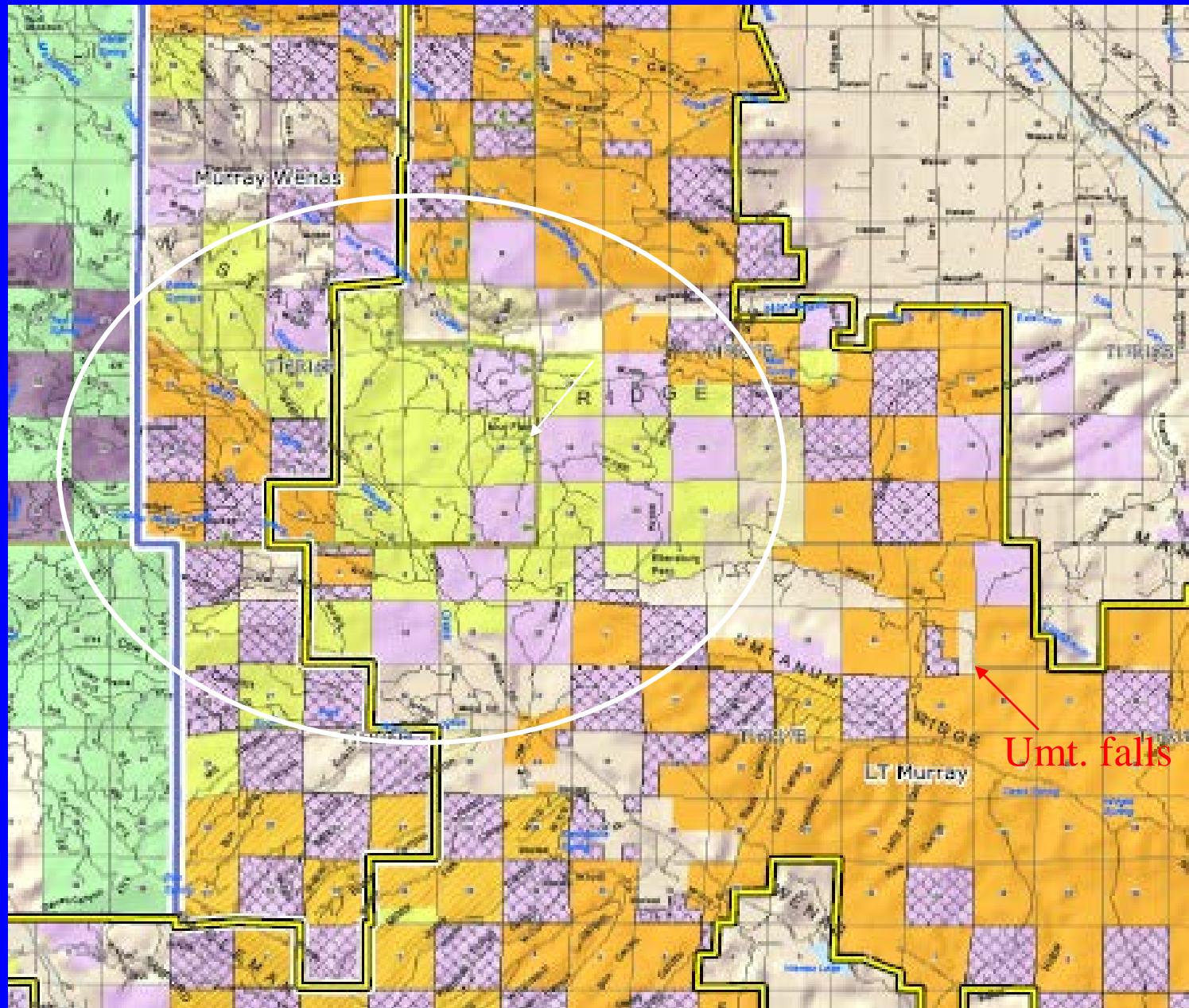


Coleman rd

Naneum/ Colockum (green = BCC)

What's next in the Wenas?





Wenas/ Manastash/ Umtanum



Success Story: Tieton River Canyon Project

The Nature Conservancy 

SAVING THE LAST GREAT PLACES ON EARTH


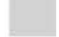
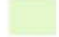









Oak Creek Wildlife Area

**THE CASCADES
CONSERVATION
PARTNERSHIP**

PROTECTING OLD-GROWTH FORESTS | LINKING WILDLIFE HABITATS | SAVING OUR TRAILS

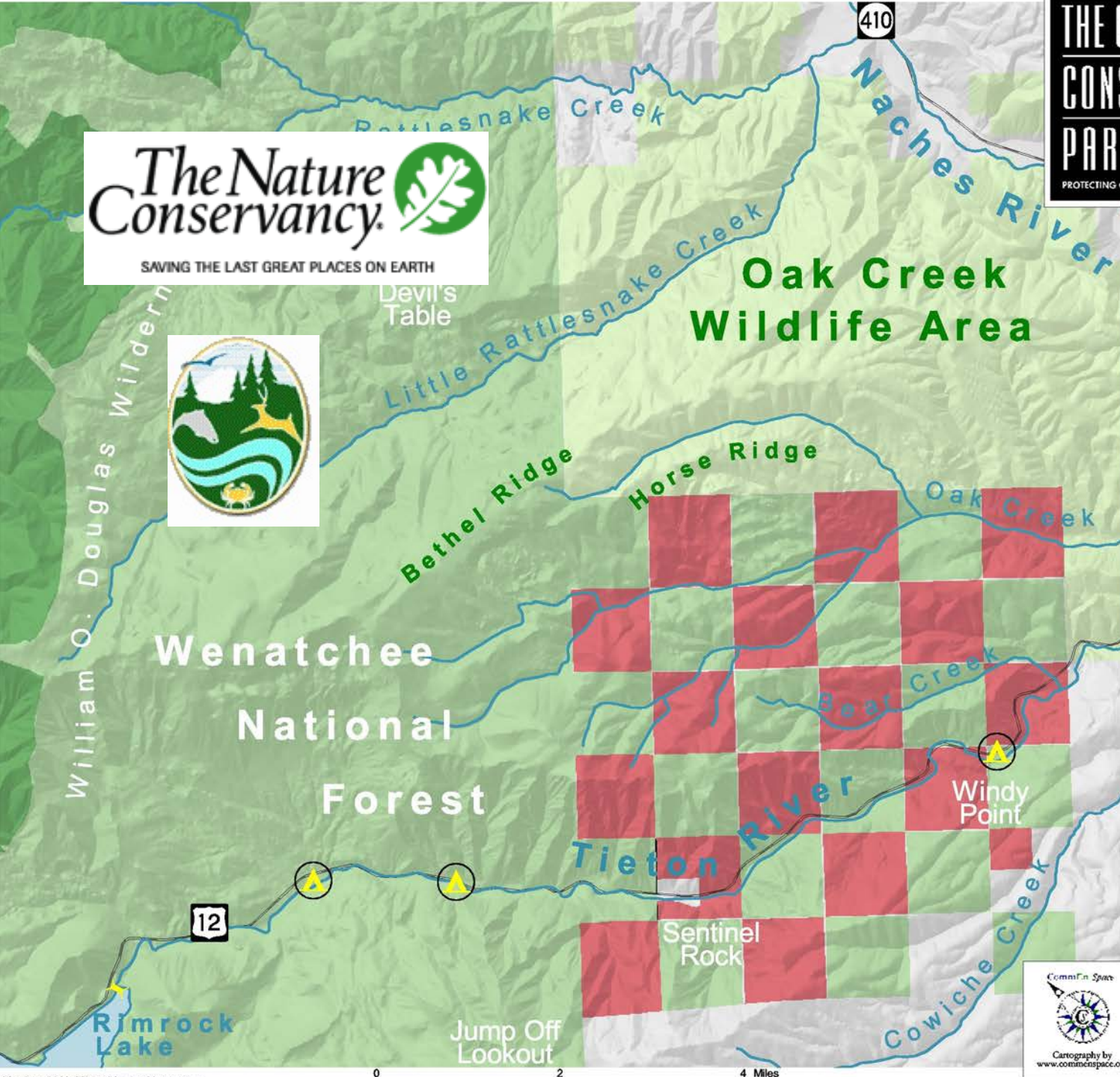
Tieton River Target Lands

-  Target Lands
-  Other Private Lands
-  Public Lands - State
-  National Forest
-  Wilderness
-  Water
-  Dam
-  Camp Site
-  Rivers
-  Major Roads



Contact the Partnership at:
3414 1/2 Fremont Ave. N
Seattle, WA 98103
Phone: 206-675-9747
www.cascadespartners.org

May 6, 2002





**Perpetual Timber Rights on
Oak Creek Wildlife Area?**

What Now?



Suggestions:

Strategies?

- *Block up public lands
- *Maintain Access
- Form Partnerships
- Prioritize areas and locations
- Generate Political Support





Questions?

