



YAKIMA BASIN
FISH AND WILDLIFE
RECOVERY BOARD



COMMUNITY-BASED SALMON RECOVERY

YAKIMA BASIN LEAD ENTITY PROGRAM

Grass Roots Salmon Recovery



Salmon Recovery Funding Board

- Statewide Policy & Funding

Regions

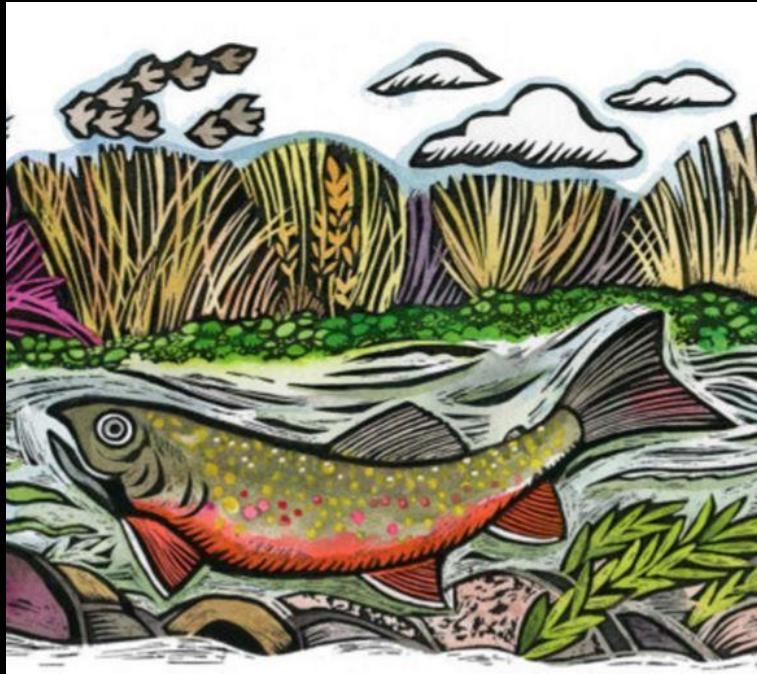
- Recovery Planning
- Board Leadership

Communities

“Lead Entity”

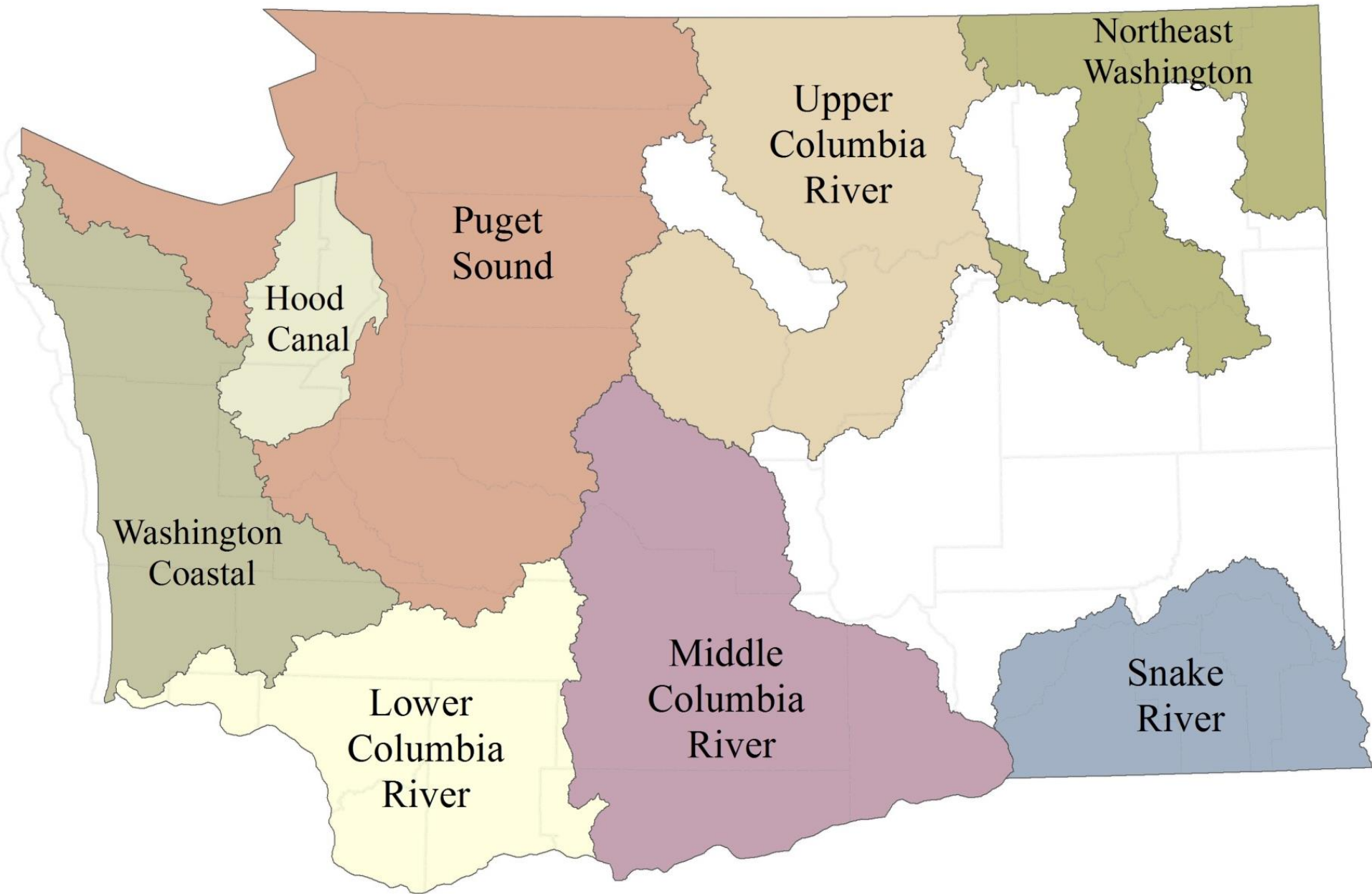
- Technical Experts
- Citizens
- Project Sponsors

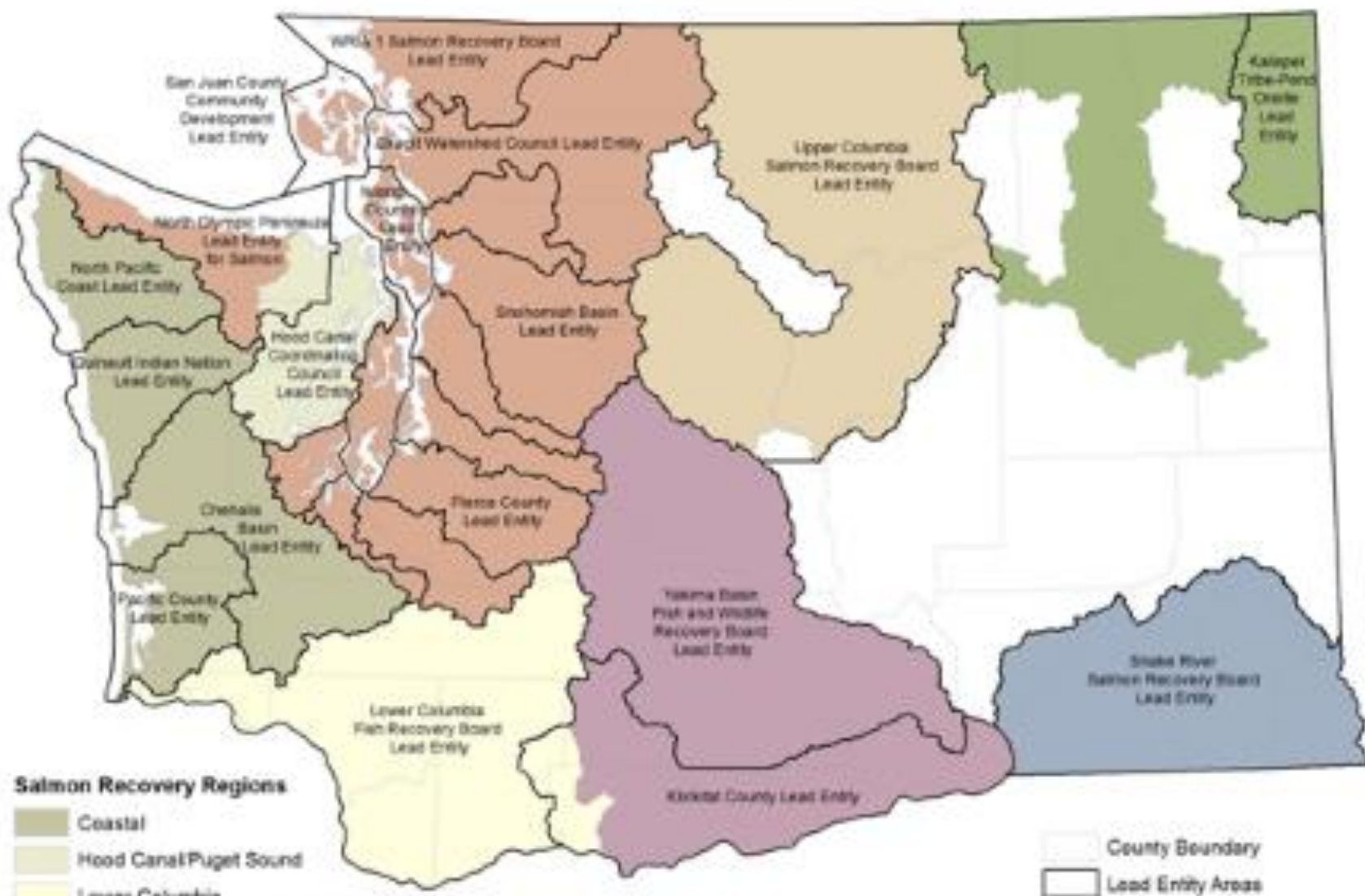
Guiding Principles



Claudia McGee, 2016

- Smart Investments
 - Local Infrastructure
 - Funding the Top Priority Projects
- Building Partnerships & Trust
 - Tribes, agencies, local governments, citizens, non-profits, business, and technical experts making difficult decisions together
- Involving Community
 - Science Based & Community Supported
- Supporting Local Economies
 - 4,400 New or Sustained Jobs
 - \$650 Million in Activity





Salmon Recovery Regions

- Coastal
- Hood Canal/Puget Sound
- Lower Columbia
- Mid Columbia
- Northeast Washington
- Puget Sound
- Snake River
- Upper Columbia
- No Region

- County Boundary
- Lead Entity Areas

A Lead Entity's Role is to:



- Maintain a citizens committee
- Maintain a technical committee
- Solicit project applications
- Develop a habitat work schedule
- Submit a list of projects to the local Board & SRFB

Yakima Basin Reviewers

Technical Advisory Group	Citizen Committee
Dale Bambrick, NOAA	Jack Clark, Benton County
David Child, Yakima Irrigators	Jerry Rhoads, Benton County
John Easterbrooks, WDFW	Ben Dow, Benton County
Joel Freudenthal, Yakima County	Neil McClure, Yakima County
Sean Gross, NOAA	Doug Mayo, Yakima County
Anna Lael, Kittitas Conservation District	Onni Perala, Yakima County
John Marvin, YKFP	Don Chaplin, Yakima County
Jennifer Nelson, WDFW	Willow Jim, Yakama Nation
Scott Nicolai, YKFP	Emily Washines, Yakama Nation
Tom Ring, Yakama Nation	Haver Jim, Yakama Nation
Arden Thomas, WA Water Trust	David Bowen, Kittitas County
Jeff Thomas, USBR	Matt Eslinger, Kittitas County
Richard Visser, USFW	Mark Charlton, Kittitas County
Rebecca Wassell, Mid-Columbia FEG	McClure Tosch, Kittitas County

SRFB Grant Program

- Eligible Applicants
 - Cities
 - Counties
 - Non-profits
 - State agencies
 - Private landowners
 - Conservation districts
 - Native American Tribes
 - Special purpose districts
 - Regional fisheries enhancement groups

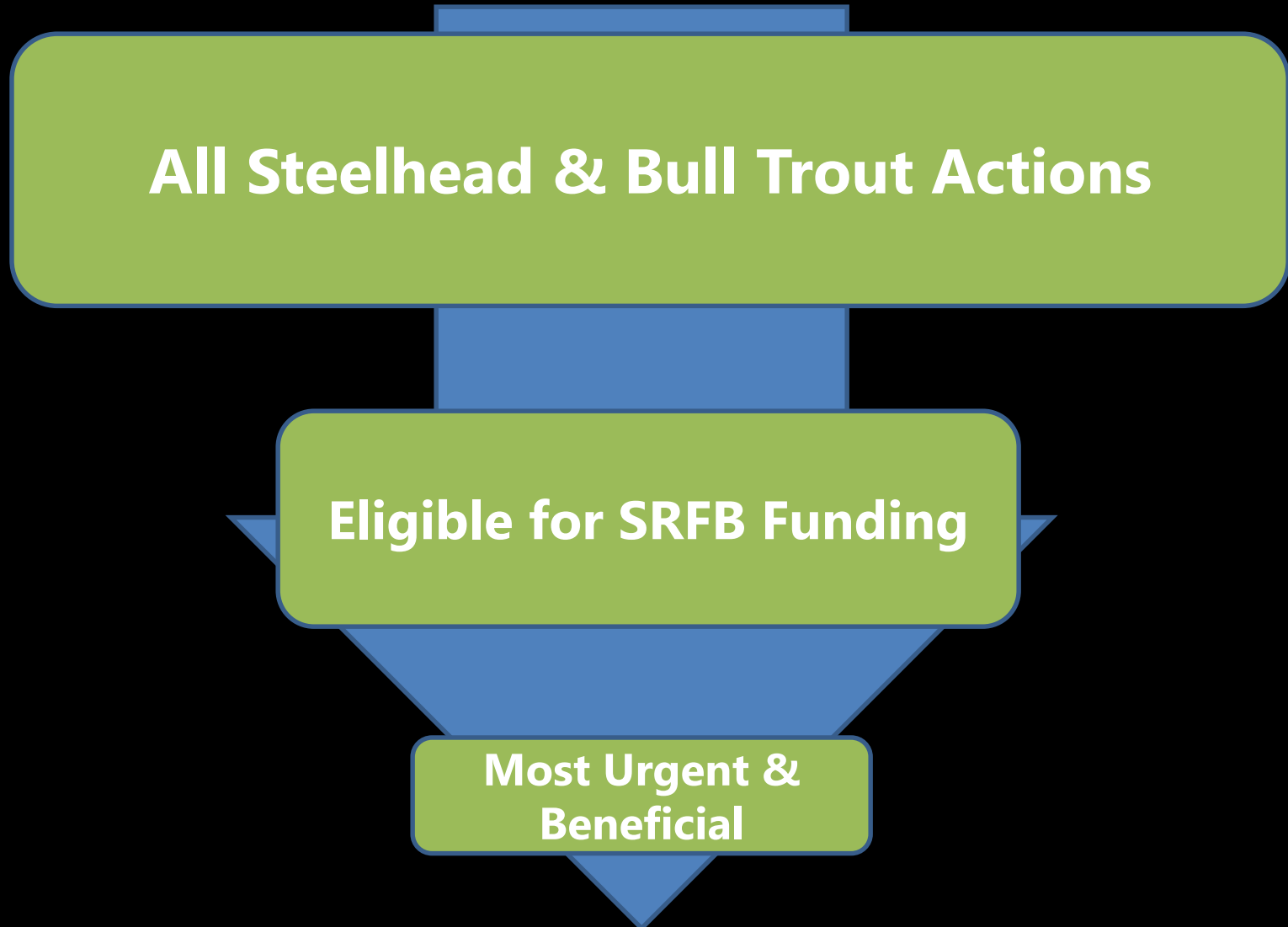


Project Categories

- Acquisition
- In-stream Habitat
- Floodplain
- Riparian
- Assessment & Design
- Passage
- Stewardship
- Monitoring



Sorting Actions: Focus Projects



Examples of Focus Projects

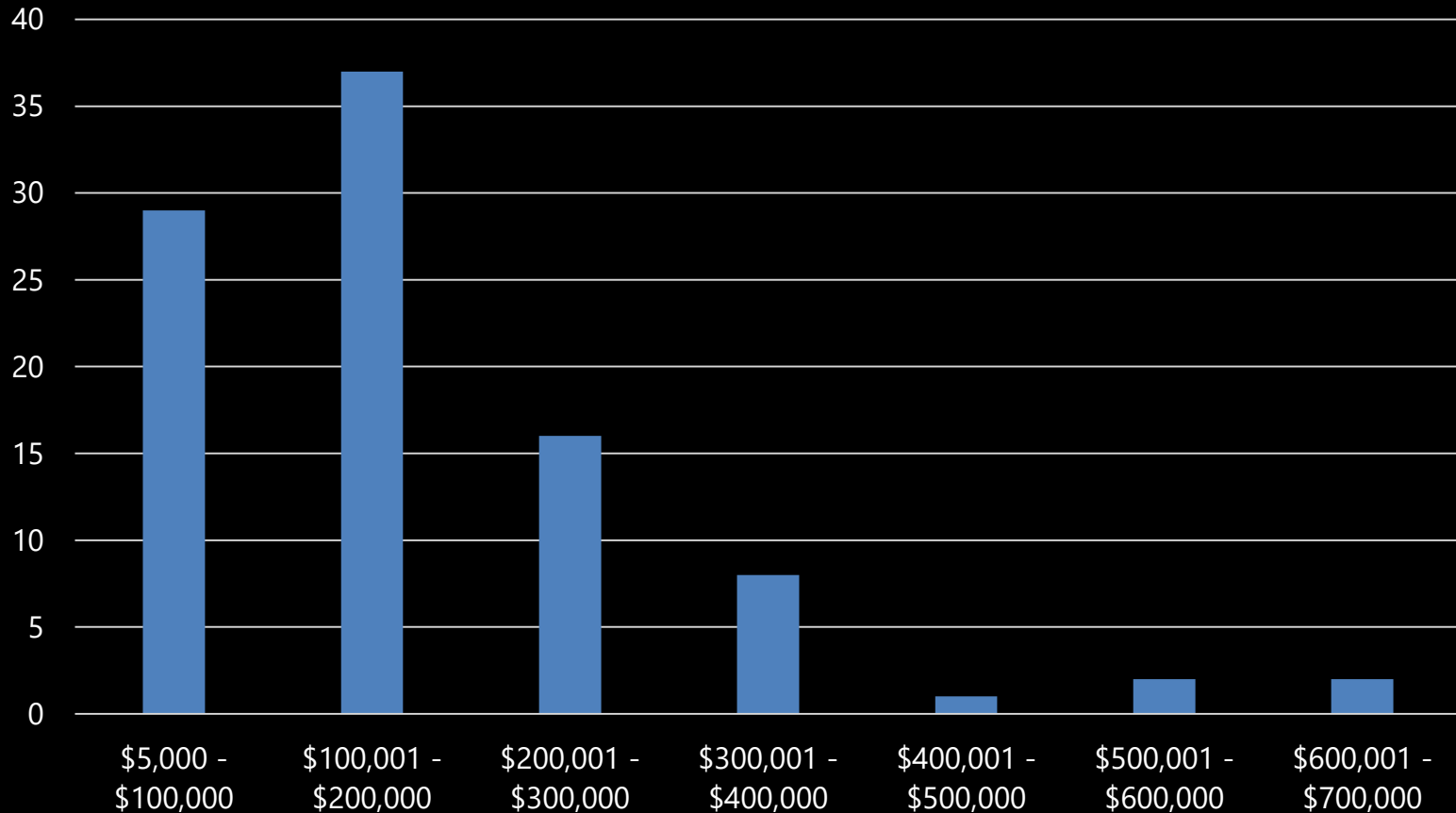


- Instream Flow
 - Toppenish, Ahtanum, Manastash, Teanaway, Swauk
- Floodplain & Side Channel Restoration
 - Wapato, Gap to Gap, Naches, Ahtanum, Teanaway, Swauk, Taneum, Upper Yakima
- Protection
 - Gap to Gap, Naches, Ahtanum, Teanaway, Swauk, Taneum, Upper Yakima
- Passage
 - Yakima Delta, Taneum, Manastash, Naneum/Coleman, Bull Trout

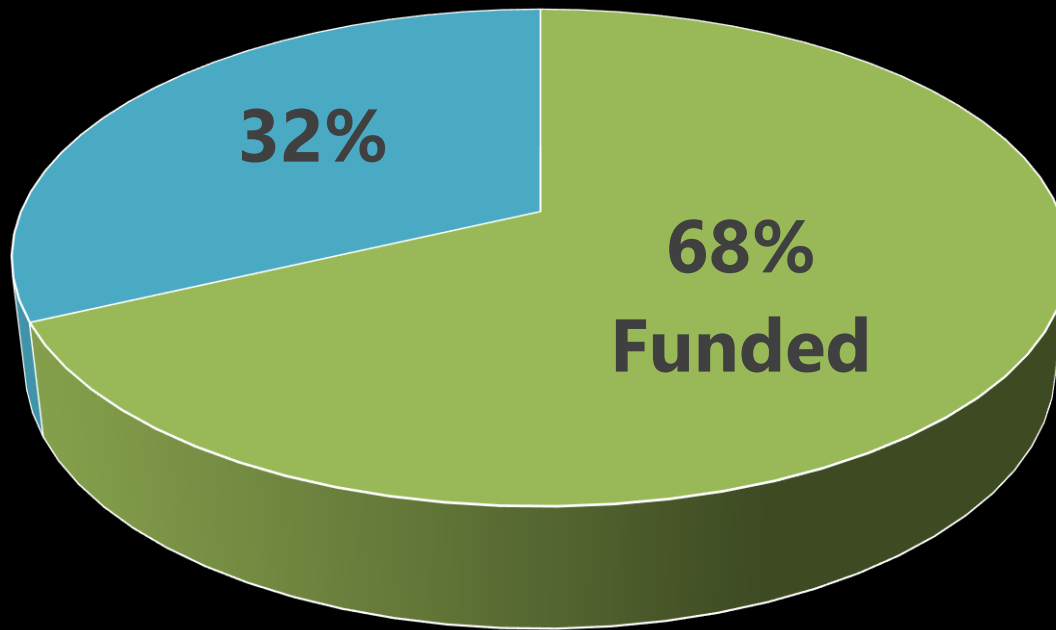
Review Criteria

Technical Advisory Group	Citizen Committee
Priority Species	Cultural & Social Benefits
Instream Flow & Hydrograph	Economic Considerations
Water Quality	Project Context &
In-Channel Habitat	Organization
Habitat Access	Partnerships & Community
Diversion Screening	Support
Floodplain Connectivity	
High Priority Project	
Quality & Quantity	
Certainty of Success	
Benefit/Cost	
Longevity of Benefit	

Typical Grant Amounts



Proposal Success Rates



Example: Fish Passage



BEFORE

NF Ahtanum Gauging Station

- Weir Removed
- 17 miles of creek opened up

North Yakima
Conservation District



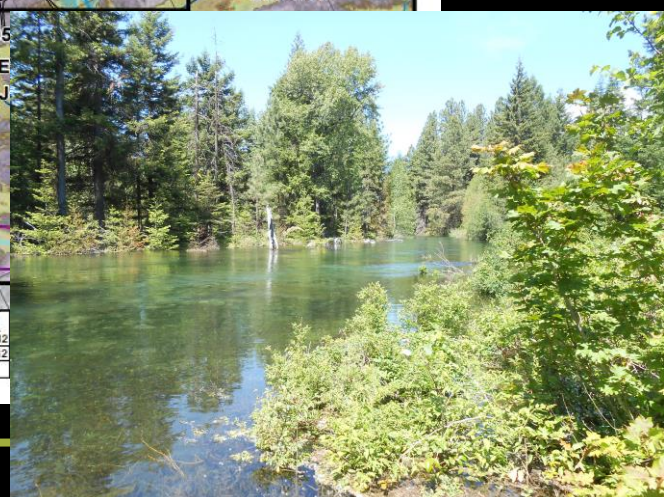
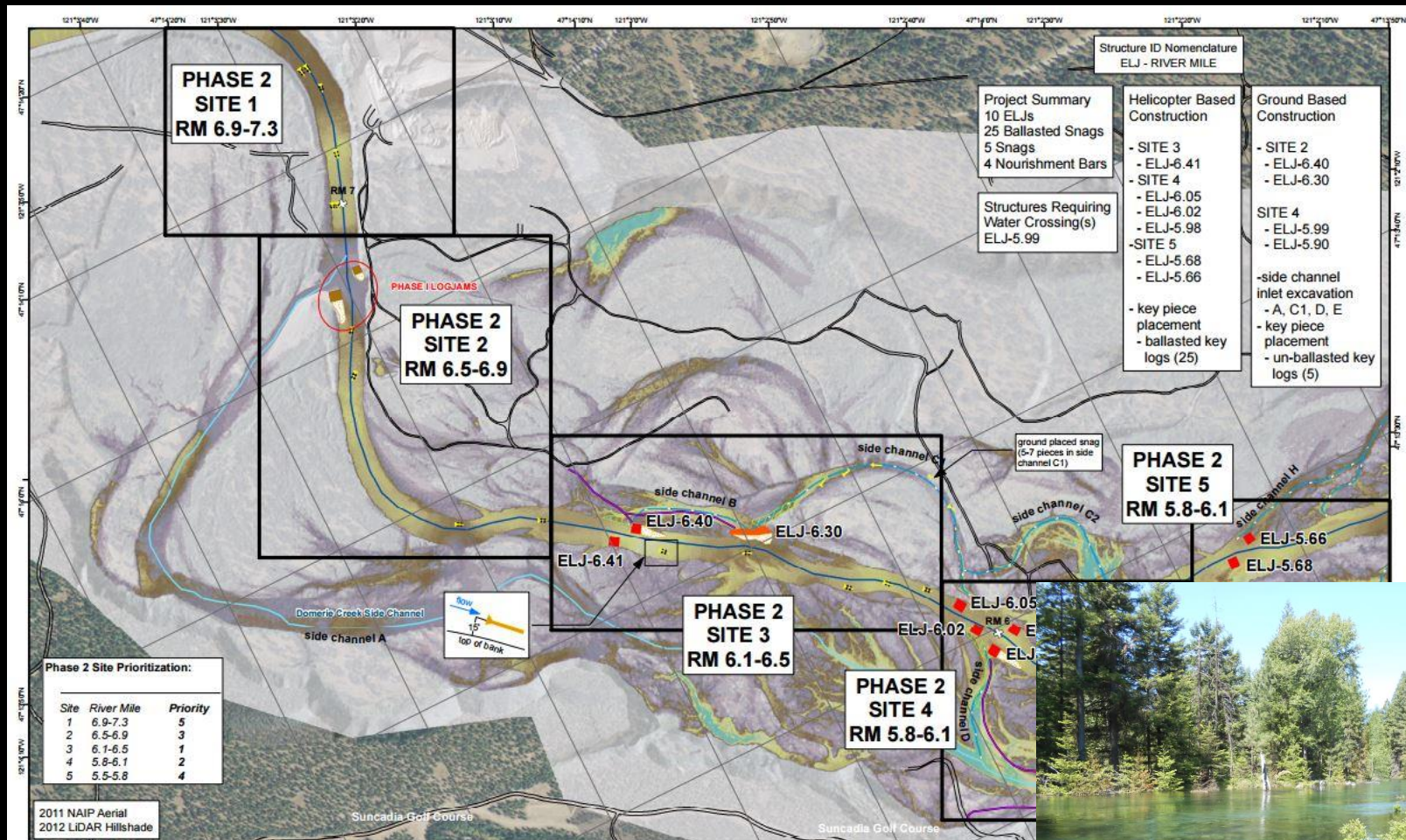
AFTER

Example: Levee Setback



Yakima County Public Services
Eschbach Park Levee Setback & Restoration

Example: Design



Kittitas Conservation Trust
Cle Elum Instream Habitat Phase 2

Funding Summary

RCO Funding Summary (Yakima Basin)	Projects	Total Funding
SRFB Grants	102	\$19,668,006

County	Kittitas	Yakima	Benton	Multiple
Number of Funded Projects	43	47	6	6
Total Funding Allocated	\$8,433,351	\$9,984,982	\$621,673	\$628,000

Current Summary	Projects	Total Funding
Active SRFB Projects in the Yakima Basin	28	\$7,032,123

Regional Monitoring Projects

At the statewide level, there are currently 3 SRFB funded monitoring programs:

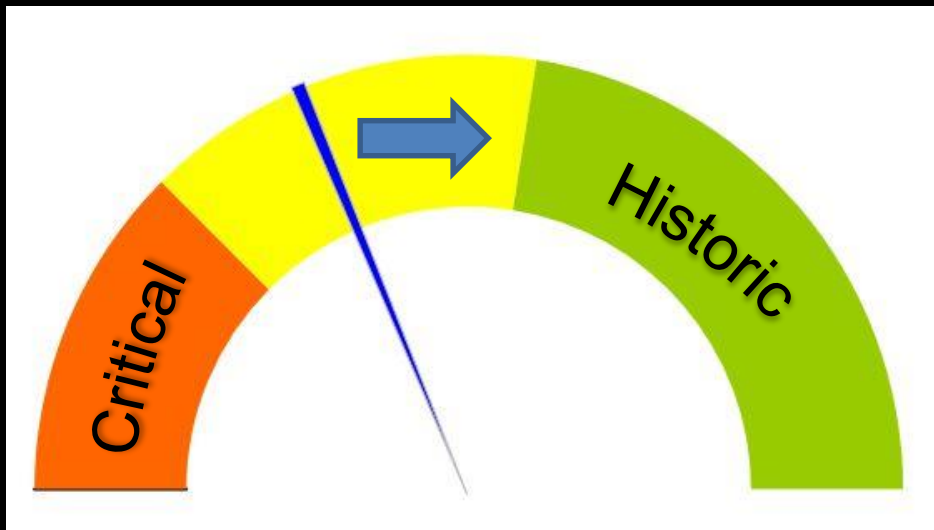
- Effectiveness Monitoring
- Status & Trends
- Intensively Monitored Watersheds

Optional New Project Type

- Regions can spend up to 10% of allocation
 - Must address documented high priority information need or data gap
 - data collection & management protocols must be consistent with others in region
-

Tracking Our Progress

- Tool: Habitat Work Schedule
 - Data Sharing & Collaboration
 - Mapping & Project Search
 - Public Outreach



Moving the Needle

- Priority Location
- Estimated Cost
- Likely Sponsor(s)

Floodplain Habitat in X Watershed

Description

Habitat Work Schedule

Tracking salmon recovery throughout Washington State

HOME

ORGANIZATIONS

MAP

SEARCH

SIGN IN

Taneum Creek Large Wood Replenishment

#2008

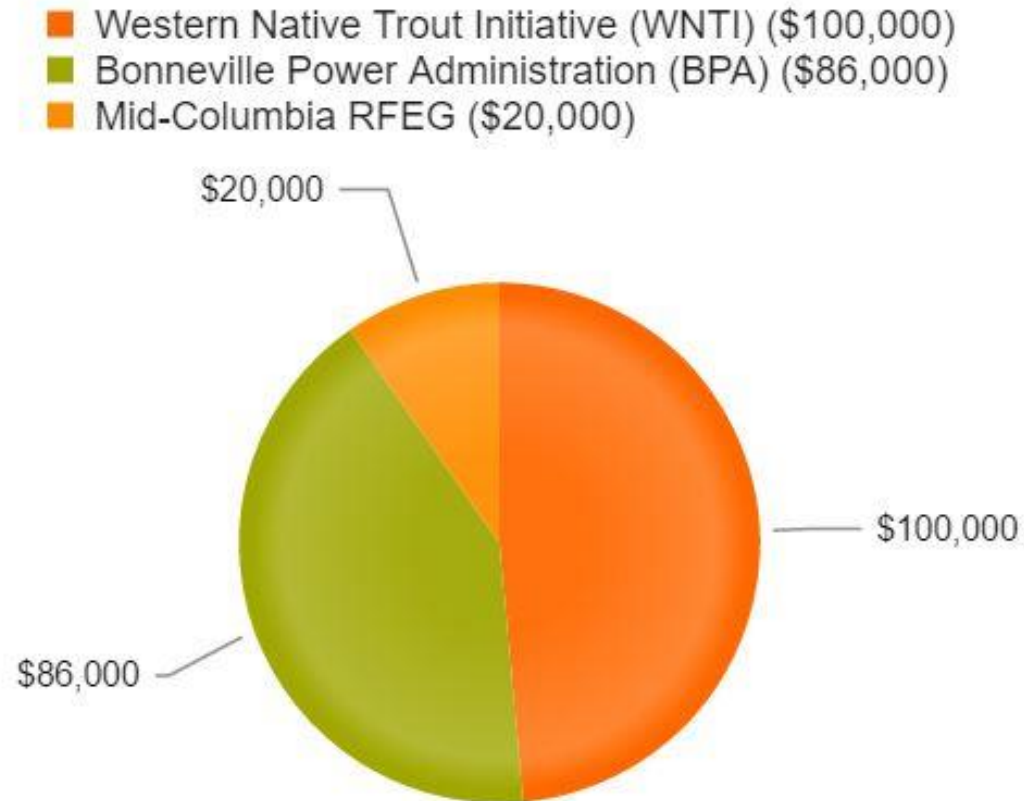
Organization	Yakima Basin Fish and Wildlife (LE)
Status	Completed
Schedule	Start Date: 7/1/2008 End Date: 7/1/2010
Priority	3
Category	Category: Restoration Projects



DESCRIPTION

This project improved in-channel habitat through the addition of large wood to Taneum Creek, a tributary to the Yakima River. The project was conceived and managed by Yakama Nation biologist Scott Nicolai. The goal of the project was to increase stream habitat function through additions of large wood to the creek and floodplain in a low-cost manner by selectively thinning overstocked forest stands adjacent to the creek. In many stands, fire exclusion has led to unnaturally dense conditions. In cooperation with the WDFW and DNR, worksites were identified where trees could be removed from the riparian area without compromising shade or slope stability. Phase 1 (2008-2009) was funded by MCFEG. A Washington Conservation Corps crew used grip hoists and other hand tools to move 400 trees into the stream. The majority of the trees are greater than ten inches in diameter. High flows in the spring of 2008 sorted the wood into a natural distribution, providing an indication of how large wood replenishment can serve to restore stream processes. Phase 2 (2010) was funded by BPA and the USFWS Western Native Trout program. About 400 trees were selectively thinned and 350-400 trees with rootwads were

Funding



Metrics

ACTIVITY-INSTREAM HABITAT PROJECT PCSRF

Acres Of Off-Channel/Floodplain Connected Or Added	40 Acres
Miles of Stream Treated for channel structure placement	03.5 Miles
Number of structures placed in channel	50 Number
Pools Created through channel structure placement	50 Number
Total Miles Of Instream Habitat Treated	07 Miles

ACTIVITY-UPLAND HABITAT AND SEDIMENT PROJECT PCSRF

Acres Treated for upland vegetation management	08 Acres
--	----------

CURRENT PROJECT STATUS

Completed

HABITAT STRATEGIES

Restore floodplain connectivity and function
Restore riparian condition and future LWD recruitment

HABITAT TYPE

Instream

PRIMARY SPECIES BENEFITING

Chinook
Coho
Steelhead

How Can I Add A Project?

*** 1. What is the Project Name?**

*** 2. What is the Project Type?**

- Restoration Project
- Acquisition & Restoration (Combination)
- Acquisition
- Planning (Assessment or Design)

*** 3. What is the Project Status?**

- Active
- Completed
- Conceptual
- Other (please specify)

- Complete a brief survey about your project and we will add it for you.
 - <http://www.ybfwrb.org/grant-program/funded-project-summary/>
 - <https://www.surveymonkey.com/r/6Y727VS>

Where Do SRFB \$s come from?

- State Capital budget & Federal NOAA (PCSRF)
 - Anticipate 2016 SRFB grant round total of \$13 million
 - Represents a \$5 million reduction based on state allocation decisions
 - Decreasing returned funds from federal and state funded salmon projects
 - Decreasing trend of salmon funds to the state overall
 - The use of \$6 million in project funds for Intensively Monitored Watershed restoration projects
 - 2017 Capacity Funds will be reduced
 - \$2 million reduction in PCSRF
 - WA Residents like to have a voice – that is not cheap
-



Questions?

Darcy Batura

Lead Entity Coordinator for Salmon Recovery

dbatura@ybfwrp.org

(509) 453-4104