

# I-90 Snoqualmie Pass East

**Implementing Partnerships on a Challenging Project to  
Effectively Manage Risk and Integrate Context Sensitive Solutions**

**Jill Arango, Kittitas County Conservation Director**  
Cascade Land Conservancy

**Jason Smith, Manager**  
WSDOT I-90 Environmental Program



**Washington State  
Department of Transportation**



# About Cascade Land Conservancy

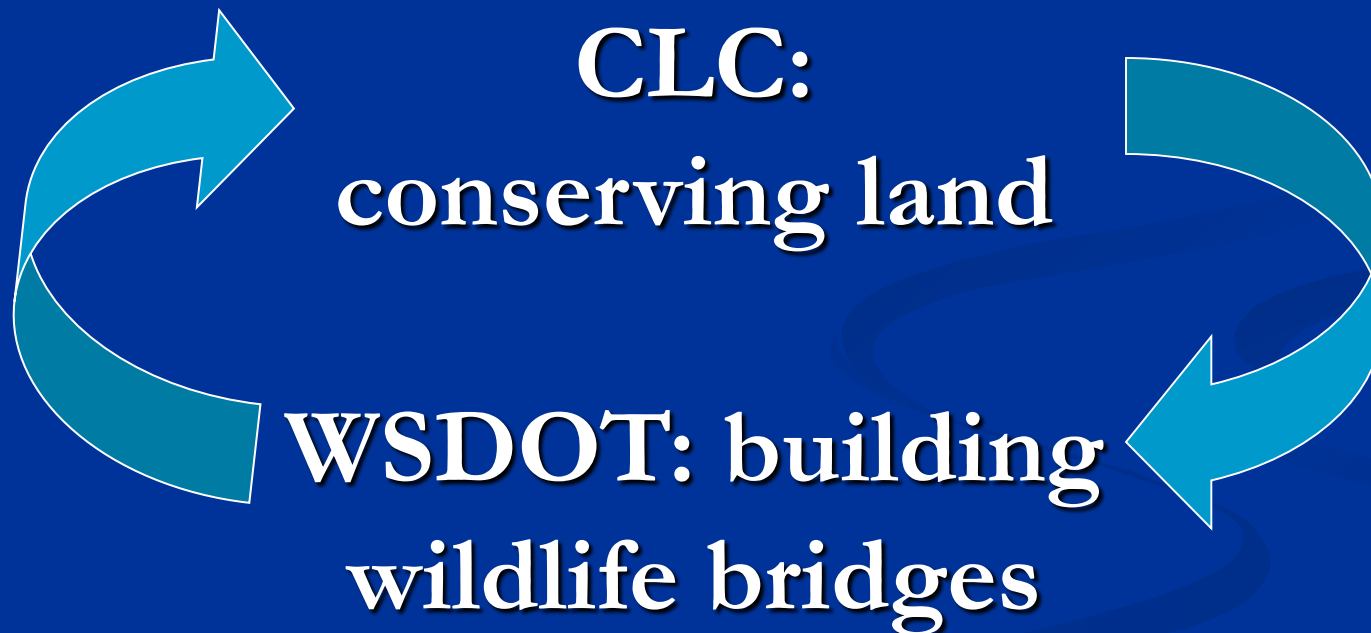
- CLC is Washington's largest independent land conservation and stewardship organization.
- Over the past decade, CLC has led the conservation of more than 120,000 acres ranging broadly from the recent expansion of Tacoma's popular Snake Lake park to conserving vast forested areas in the Snoqualmie Forest.
- Our work is closely tied to communities, including active volunteer leadership groups in King, Kittitas, Pierce, Mason, and Snohomish counties.

# About Cascade Land Conservancy

- able to utilize a variety of tools and strategies based on the land's ecological values and landowner goals
- entrepreneurial and collaborative approach
- comprehensive understanding of financial tools and tax law
- partner with wide variety of conservation organizations, private companies, public agencies and individuals

*“We look to the future with great optimism that conservation can move forward hand-in-hand with our region’s quality of life and economic well being.”*

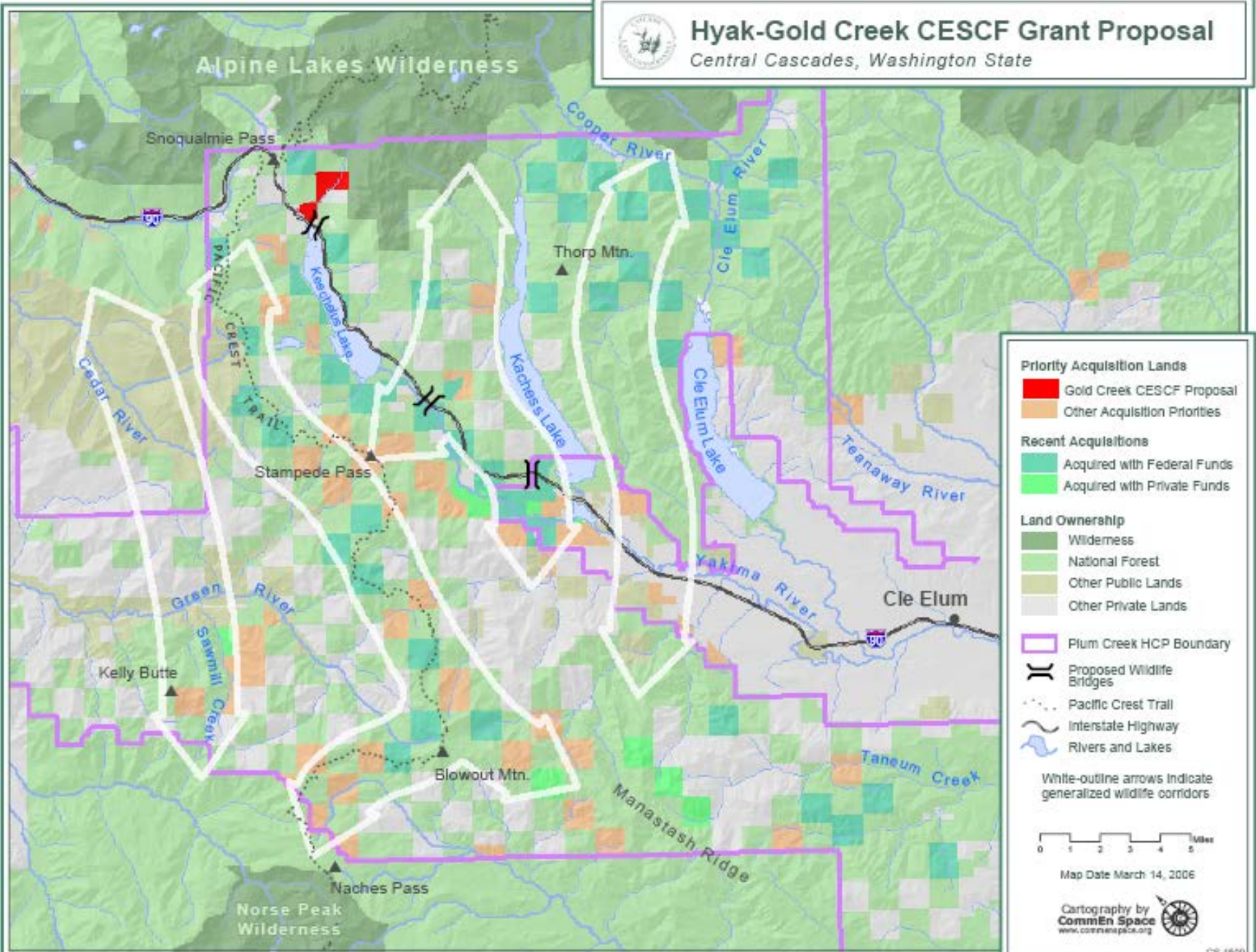
# Cascade Land Conservancy in Partnership with WSDOT: I-90 Corridor Project





# Hyak-Gold Creek CESC Grant Proposal

Central Cascades, Washington State



**Priority Acquisition Lands**

- Gold Creek CESC Proposal
- Other Acquisition Priorities

**Recent Acquisitions**

- Acquired with Federal Funds
- Acquired with Private Funds

**Land Ownership**

- Wilderness
- National Forest
- Other Public Lands
- Other Private Lands

Plum Creek HCP Boundary

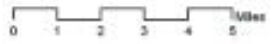
Proposed Wildlife Bridges

Pacific Crest Trail

Interstate Highway

Rivers and Lakes

White-outline arrows indicate generalized wildlife corridors



Map Date March 14, 2006

Cartography by  
**Common Space**  
www.commonspace.org

# I-90 Corridor Project

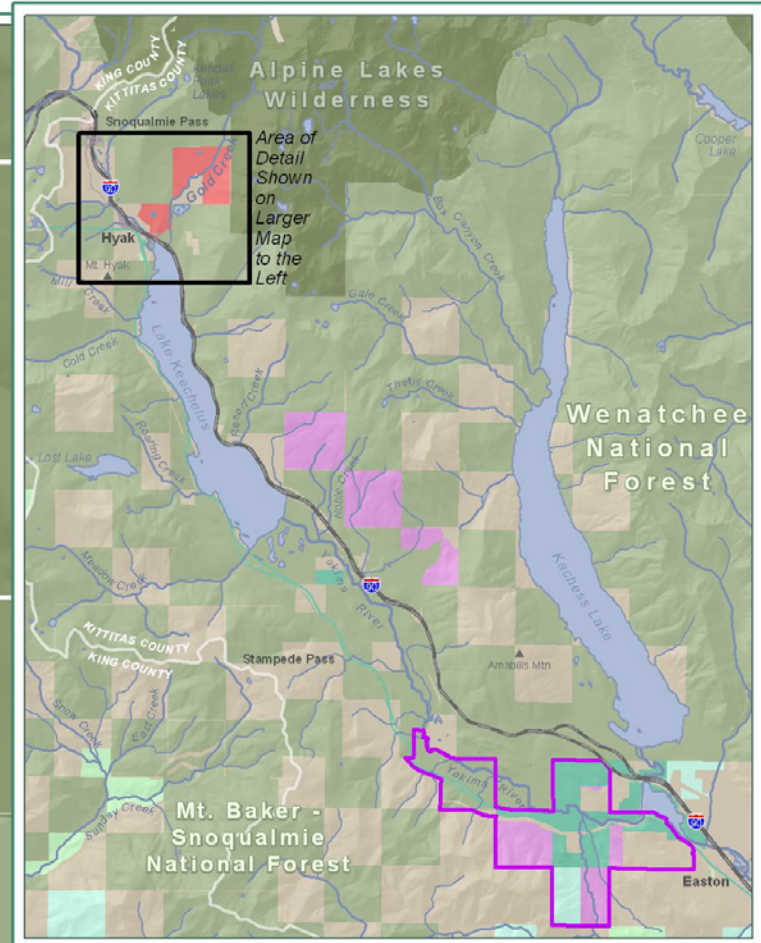
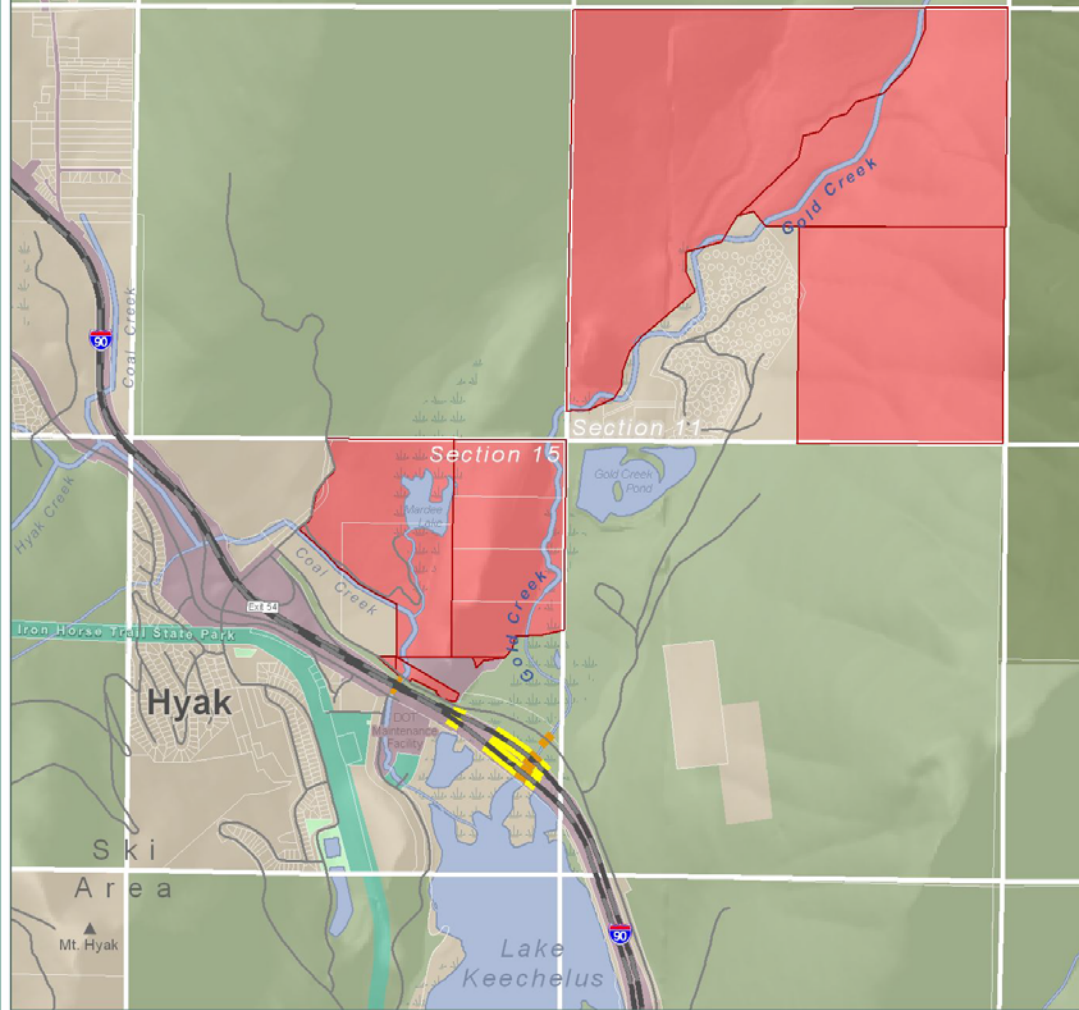
- CLC applied for Section 6 Endangered Species funding from USFWS
  - In partnership with DNR and WDFW
  - Matching funds from WSDOT and other sources
- Awarded funds for land acquisition
  - 2005 = \$50,000
  - 2006 = \$3.94 million
  - 2007 = \$4.1 million

# I-90 Corridor Project



## Hyak - Gold Creek Properties

Fiscal Year 2007 Grant Proposal

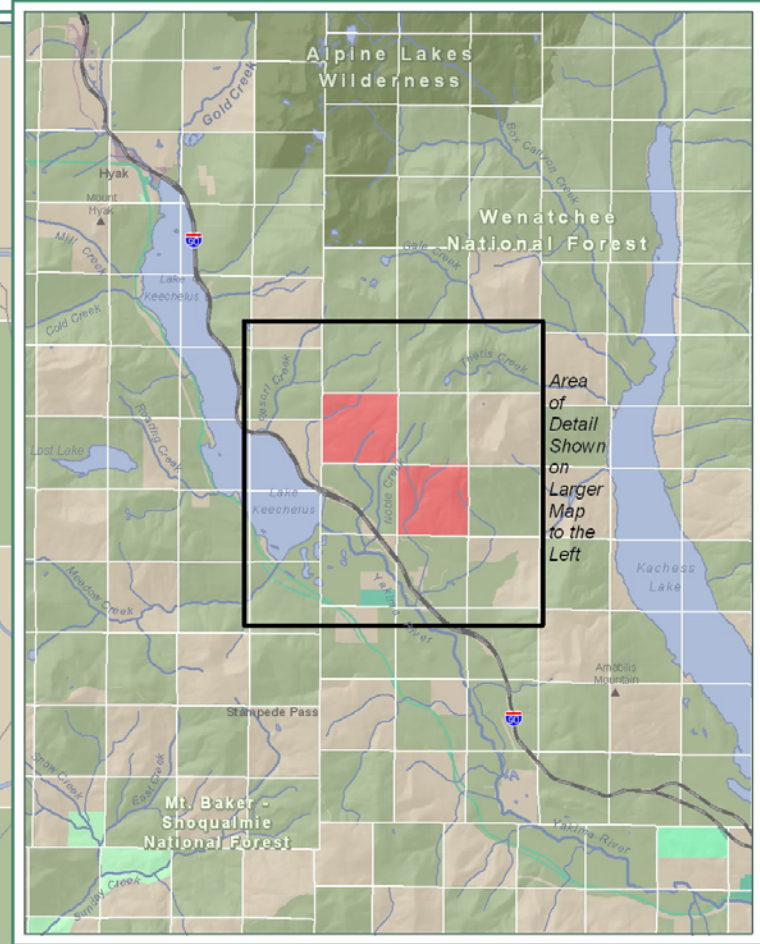
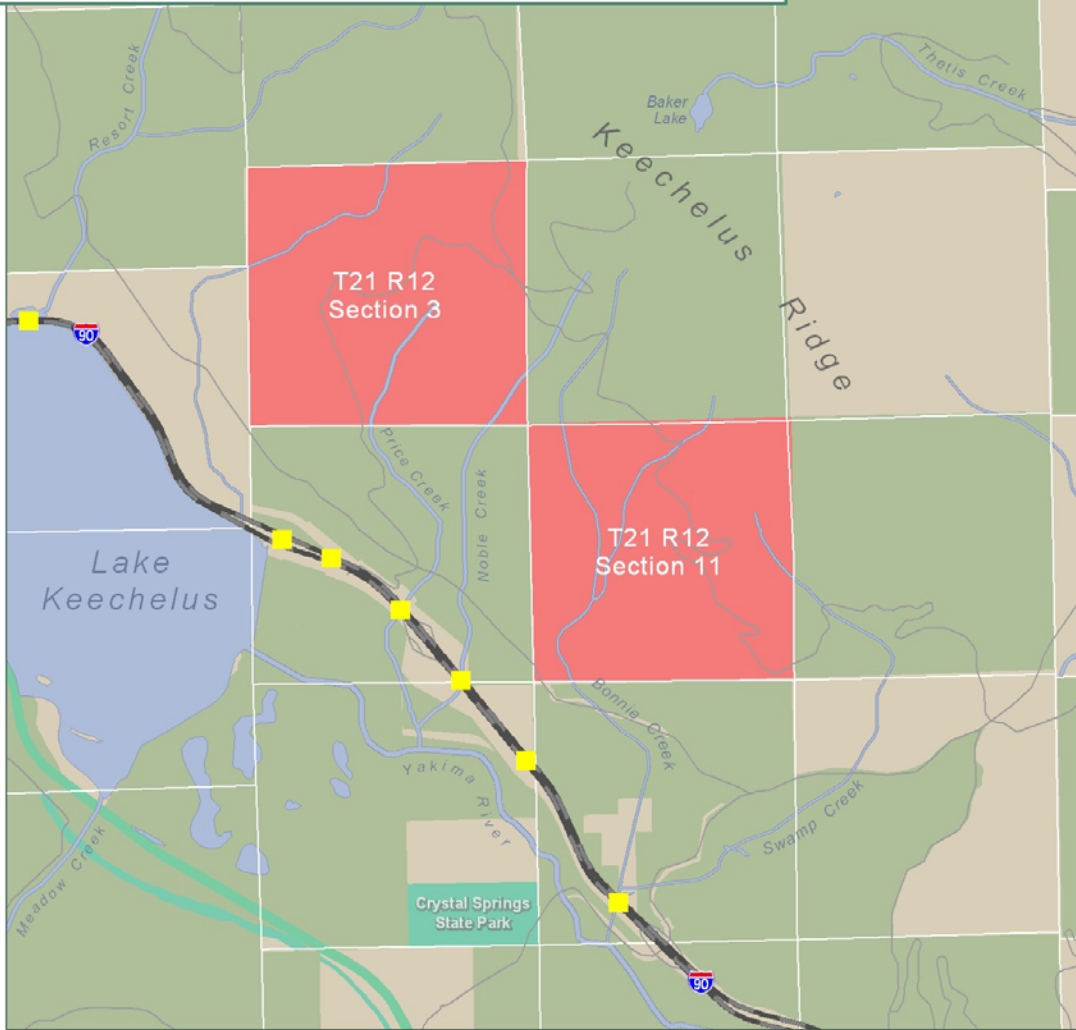


# I-90 Corridor Project



## Keechelus Ridge Properties

Fiscal Year 2006 Grant Proposal



Proposed Conservation Target	Wilderness	Highway	Map Date August 31, 2006
Proposed Wildlife Bridge	National Forest	Other Road	
	State Parks	Section Boundary	0 25000 1,000 2,000 2,500 Feet
	State DOT	River or Stream	
	County or Municipal	Lake	Cartography by <b>CommonSpace</b> www.commonspace.org
	Private		





# SNOQUALMIE PASS EAST

A safer, more efficient six-lane freeway from Hyak to Keechelus Dam

**Improve  
Safety**



**Increase  
Capacity**



**Replace  
Pavement**



**Reduce  
Avalanche  
Closures**



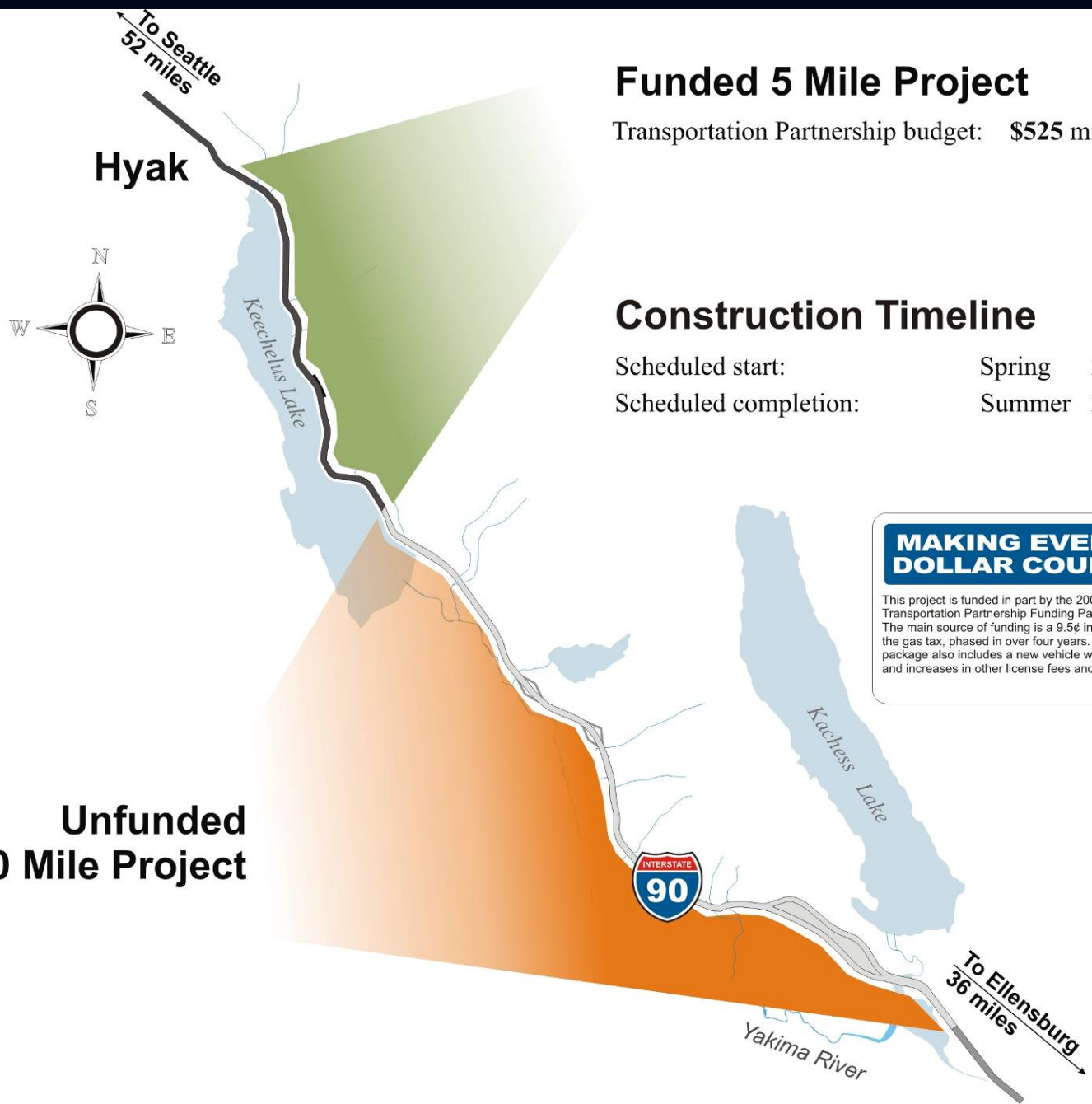
**Stabilize  
Slopes**



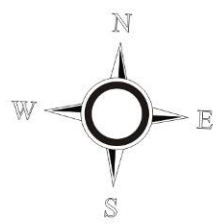
**Enhance  
Wildlife  
Connectivity**







Hyak



## Funded 5 Mile Project

Transportation Partnership budget: \$525 million

## Construction Timeline

Scheduled start: Spring 2010  
 Scheduled completion: Summer 2015

### MAKING EVERY DOLLAR COUNT.

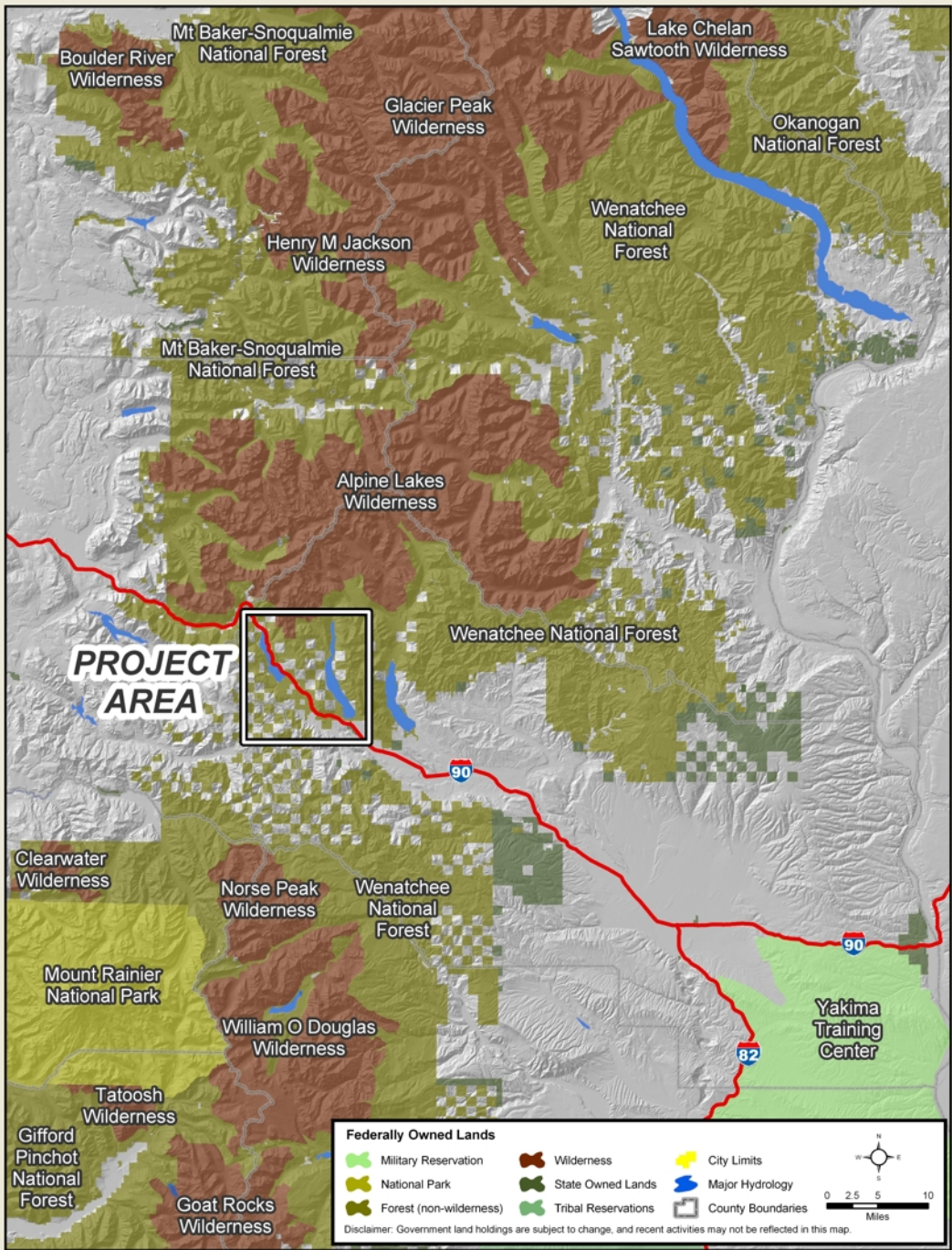
This project is funded in part by the 2005 Transportation Partnership Funding Package. The main source of funding is a 9.5¢ increase in the gas tax, phased in over four years. The package also includes a new vehicle weight fee and increases in other license fees and charges.

Unfunded  
10 Mile Project



To Ellensburg  
36 miles

Easton



Boulder River  
Wilderness

Mt Baker-Snoqualmie  
National Forest

Glacier Peak  
Wilderness

Lake Chelan  
Sawtooth Wilderness

Okanogan  
National Forest

Henry M Jackson  
Wilderness

Wenatchee  
National Forest

Mt Baker-Snoqualmie  
National Forest

Alpine Lakes  
Wilderness

Wenatchee National Forest

Clearwater  
Wilderness

Norse Peak  
Wilderness

Wenatchee  
National Forest

Mount Rainier  
National Park

William O Douglas  
Wilderness

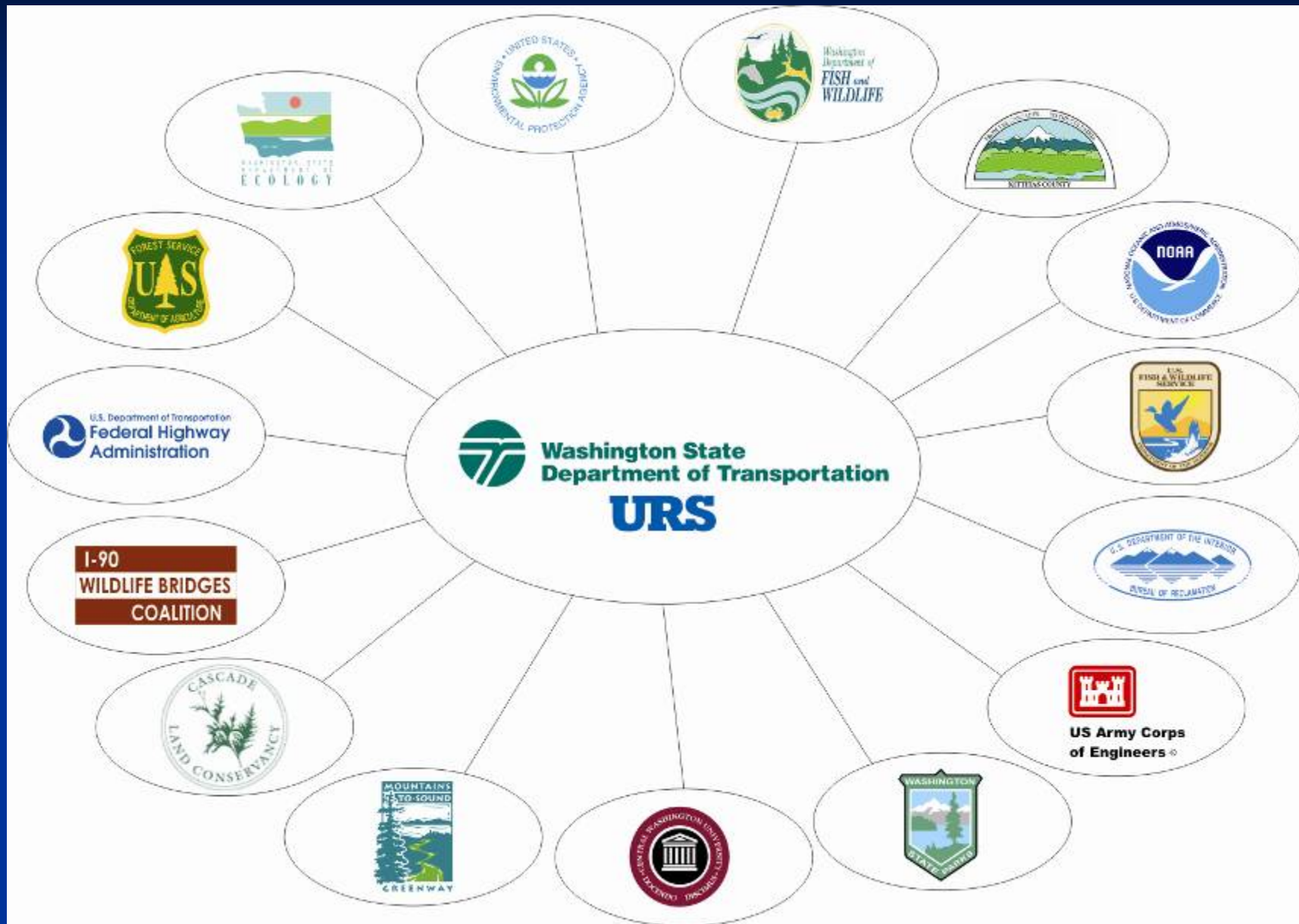
Yakima  
Training Center

Gifford  
Pinchot  
National  
Forest

Tatoosh  
Wilderness

Goat Rocks  
Wilderness

# Interagency/NGO Partnerships



# Partnerships in Defining the Project

- Integrated Project Place Based Design Team – WSDOT/Multiple Consultant Firms
- Project Interdisciplinary Team Consists of 12 separate agency representatives
- 5 Technical Committees with representatives from IDT Agencies
- Regular interaction and meetings with interest groups – Tribal Government, NGO's, Conservation Groups, User Groups

# Partnerships in Conservation

- Recognition that transportation system improvements do not have to be exclusive of regional and local environmental stewardship goals.
- Working with diverse groups such as the Cascade Land Conservancy, Conservation Northwest, Wildlife Bridges Coalition, and the Mountains to Sound Greenway to incorporate a context sensitive design solution into the project.
- Clever grant match fund solutions utilizing WSDOT investments to help achieve watershed objectives of partnerships.

# Partnerships in Research

- Working with diverse groups and educational institutions on research opportunities in the project area.
  - Wildlife Monitoring - Wildlife Bridges Coalition Citizens Monitoring Program, Western Transportation Institute/Montana State University, Central Washington University
  - Education and Outreach Partnerships – Bridging Futures,
  - Government Research Opportunities Outside project Boundaries— USFS research, USFWS research (PAR), WSDOT Research Office
  - Joint Grant Opportunities – use of unique match funds from WSDOT