

Yakima Bull Trout Abundance & Status



Eric Anderson – WDFW

Acknowledgements

Cassandra Anderson - MCF

Nicole Fenton - Americorp

Jeff Thomas - USFWS

Pat Monk - USFWS

Brent Trim - USFWS

Robert Randall - USFWS

Judy Neibauer - USFWS

Gary Torretta - USFS

Paul James - CWU

Ashton Bunce - CWU

David Child - DC Consulting

Arden Thomas - USBR

Joel Hubble - USBR

Tim Ressigue - YN

Jeff Trammell - YN

Paul Huffman - YN

William Meyer - WDFW

Jim Cummins - WDFW

John Easterbrooks - WDFW

Alex Conley - YBFWRB

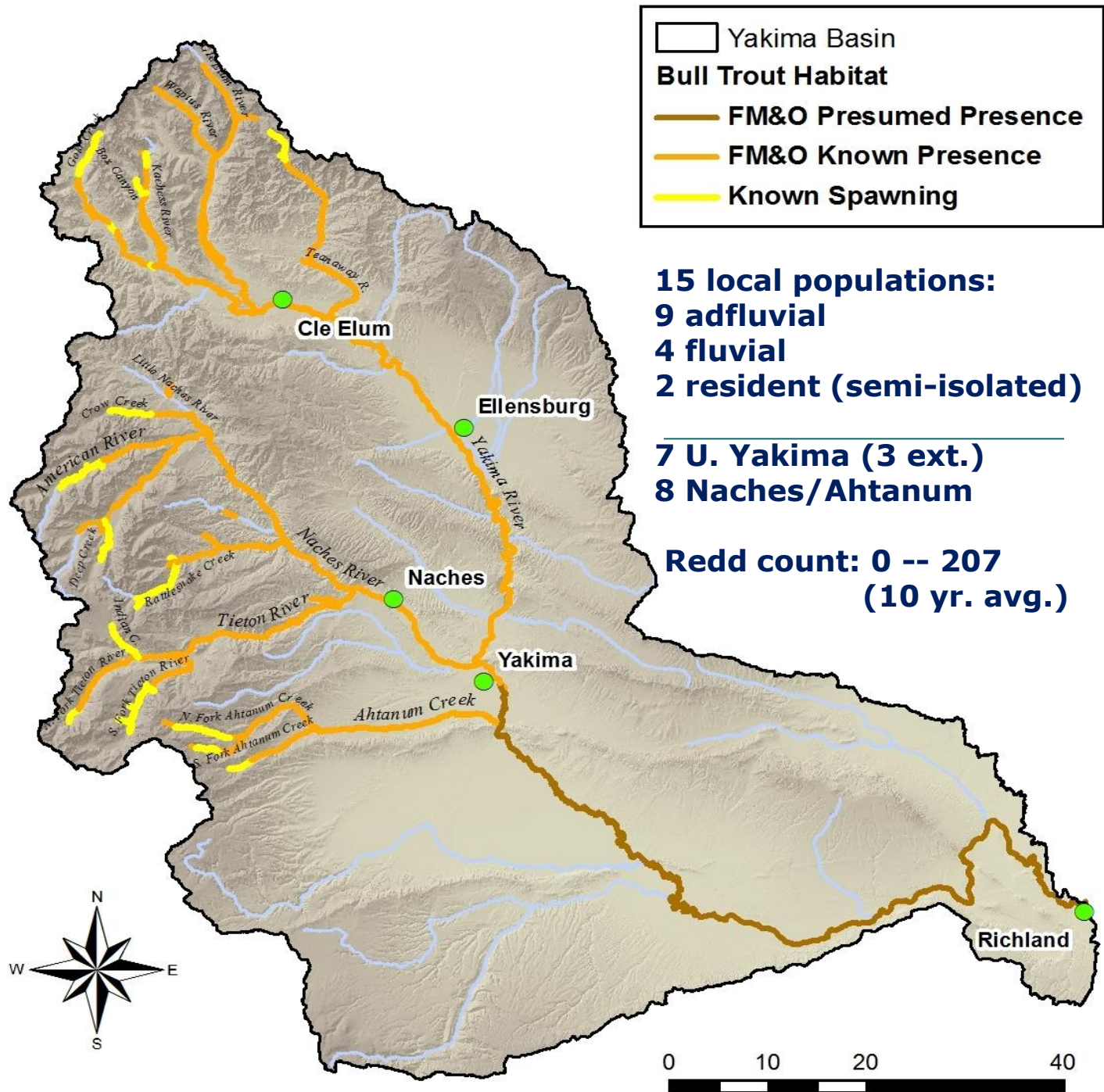
Yuki Reiss - YBFWRB



Geographic Recovery Unit Area

Yakima Core Area - 15 local populations (12 gen. distinct)

- Ahtanum, N.F Tieton, S.F Tieton, Indian, Rattlesnake, American, Crow, Deep/Up. Bumping (1), N.F. Teanaway, Kachess, Box, Gold, Cle Elum, Waptus, U. Yakima.
 - One >200+ redd avg. (S.F. Tieton); Two >100+ redd avg. (Indian, Deep); Two avg. 30 - 40 redds (Amer. & Rattle)
 - Remainder = 5 – 20 redds.
 - Large Scale connectivity issues and high risk for climate change



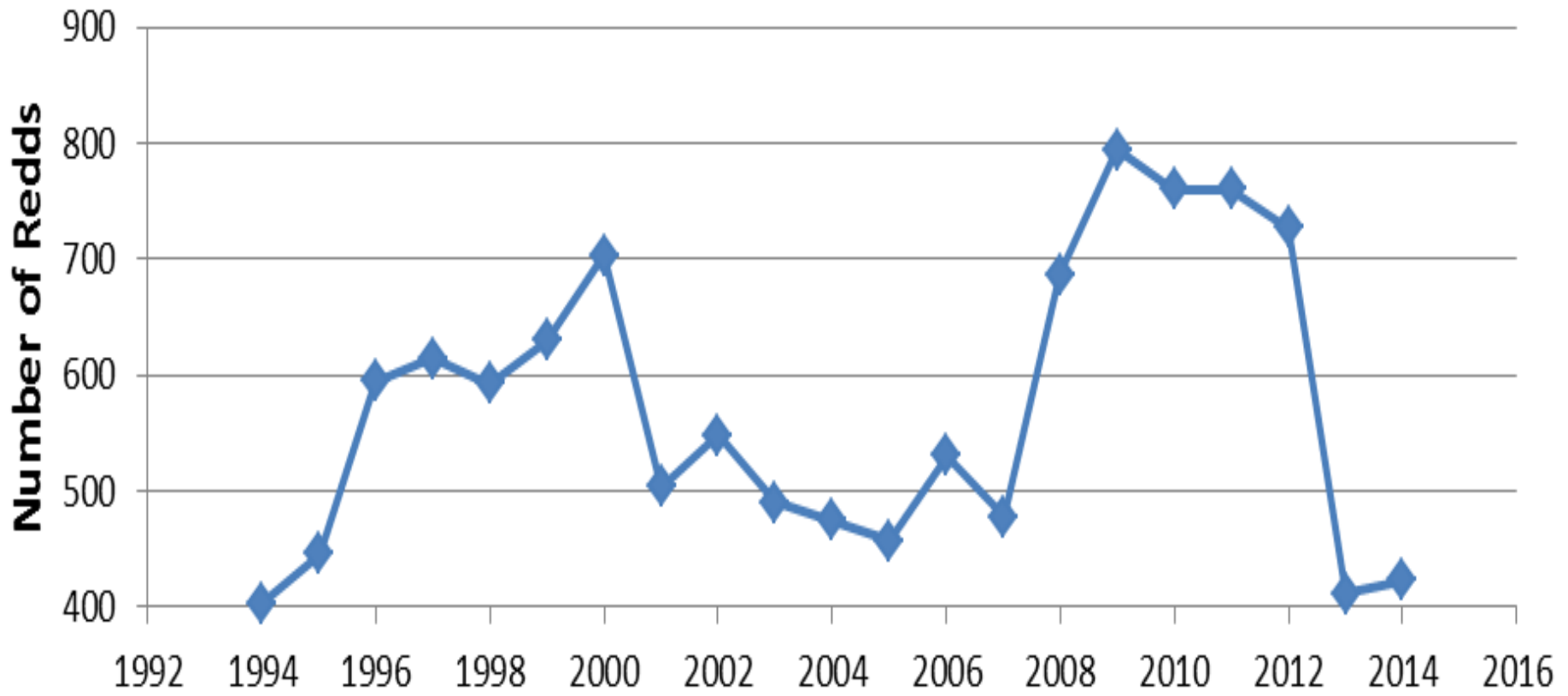
Naches Populations (Redds) -- 10 year avg.

- **Ahtanum Creek (R) – Ahtanum (14)**
- **Naches River (F) – Rattlesnake (34), Crow (6), American (40)**
- **Rimrock Lake (Ad) – Indian (108), SF Tieton (207), NF Tieton (19 – 8 yr avg.)**
- **Bumping Lake (Ad) – Deep (137)**

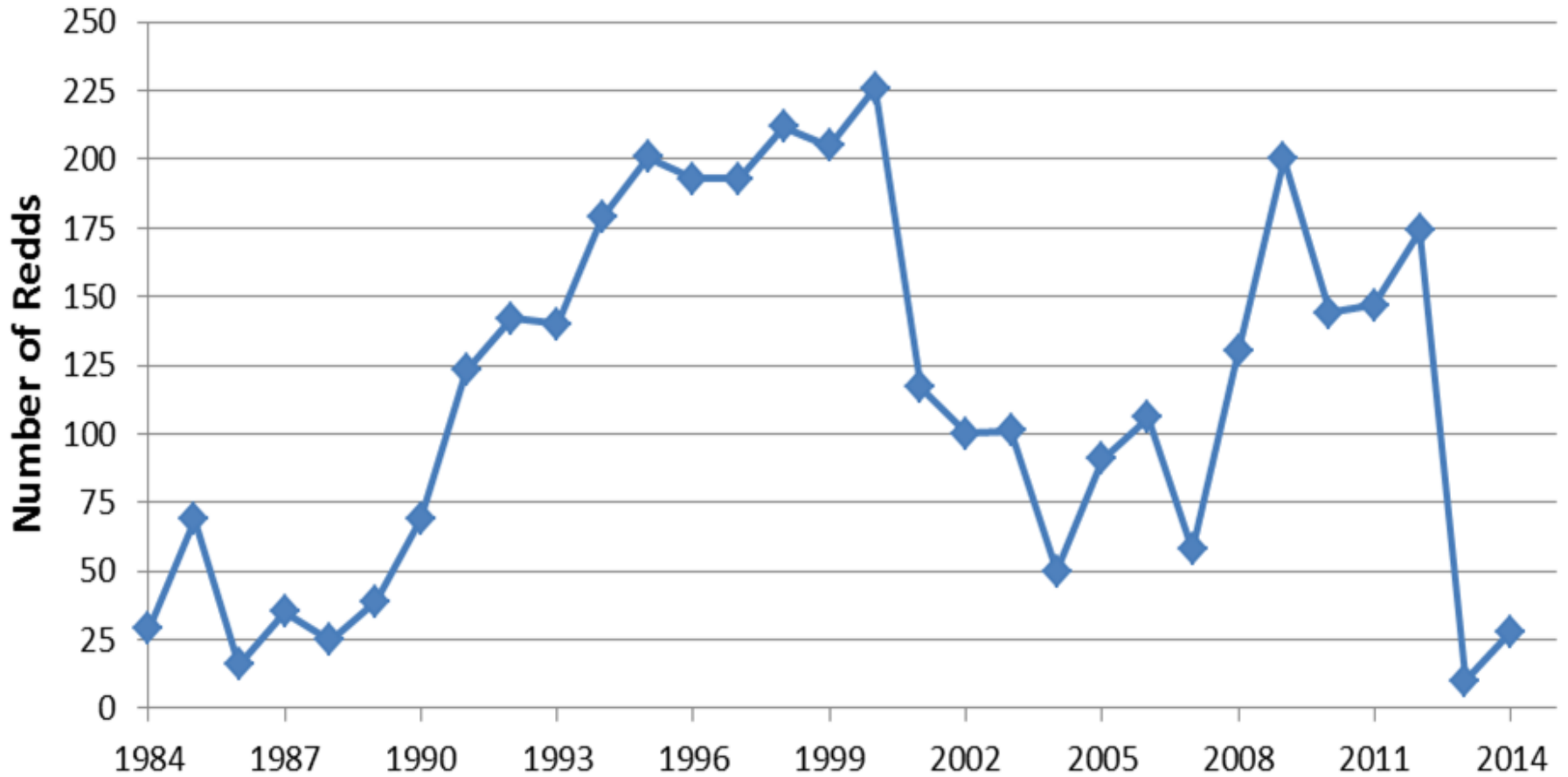
Up. Yakima Pop. (Redds) - 10 yr. avg.

- **Kachess Lake (Ad) – Box Canyon (13), Kachess (11)**
- **Keechelus Lake (Ad) – Gold (16)**
- **Cle Elum & Waptus Lakes (Ad)
No confirmed redds, functionally extirpated**
- **N.F. Teanaway River (F/R) – 5 redds in 10 years, functionally extirpated**
- **Up. Yakima River (F) – 4 redds in 10 yr.**

Yakima Basin Bull Trout Redd Counts 1994-2014



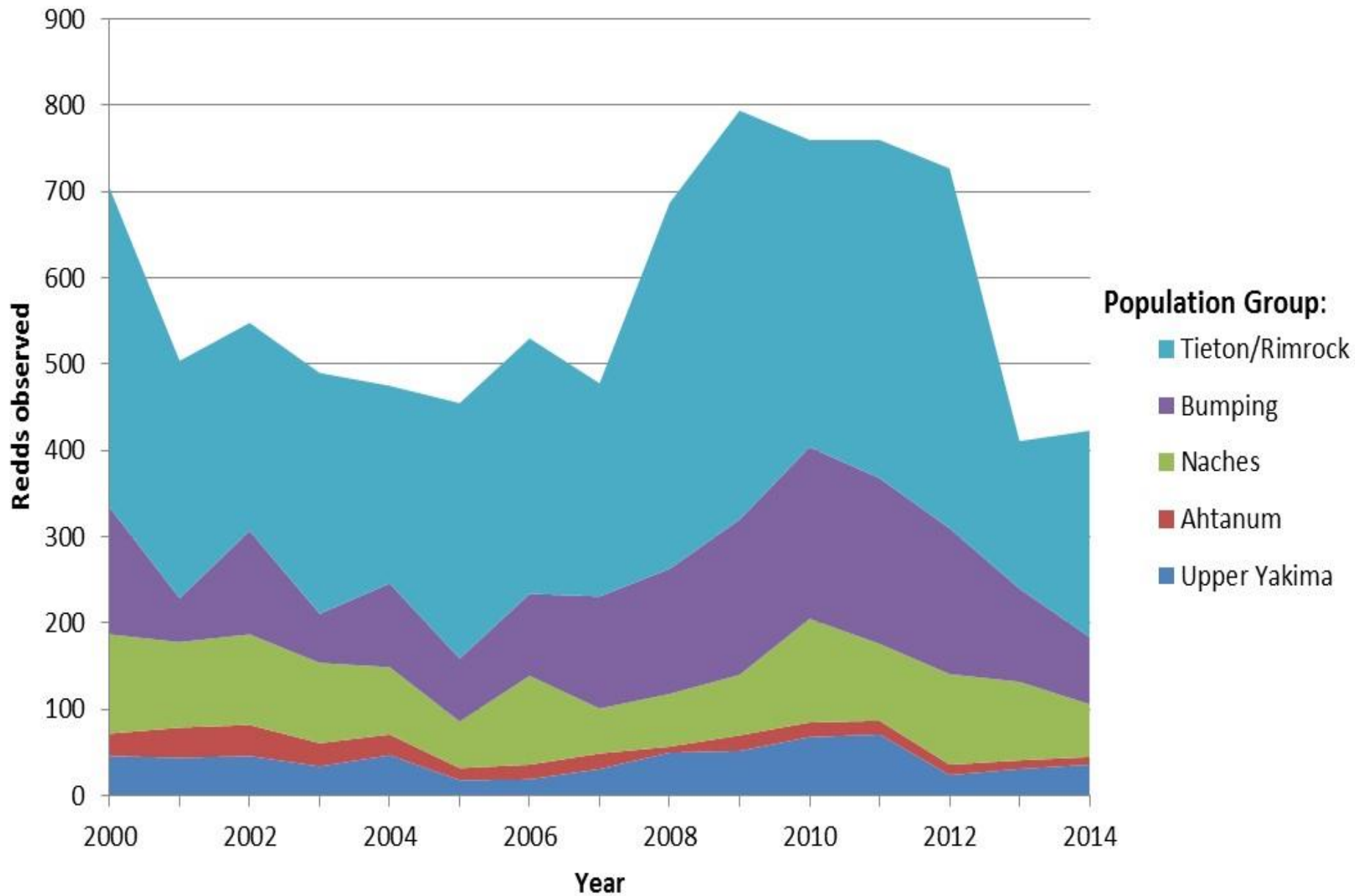
Indian Creek Bull Trout Annual Redd Counts 1984-2014

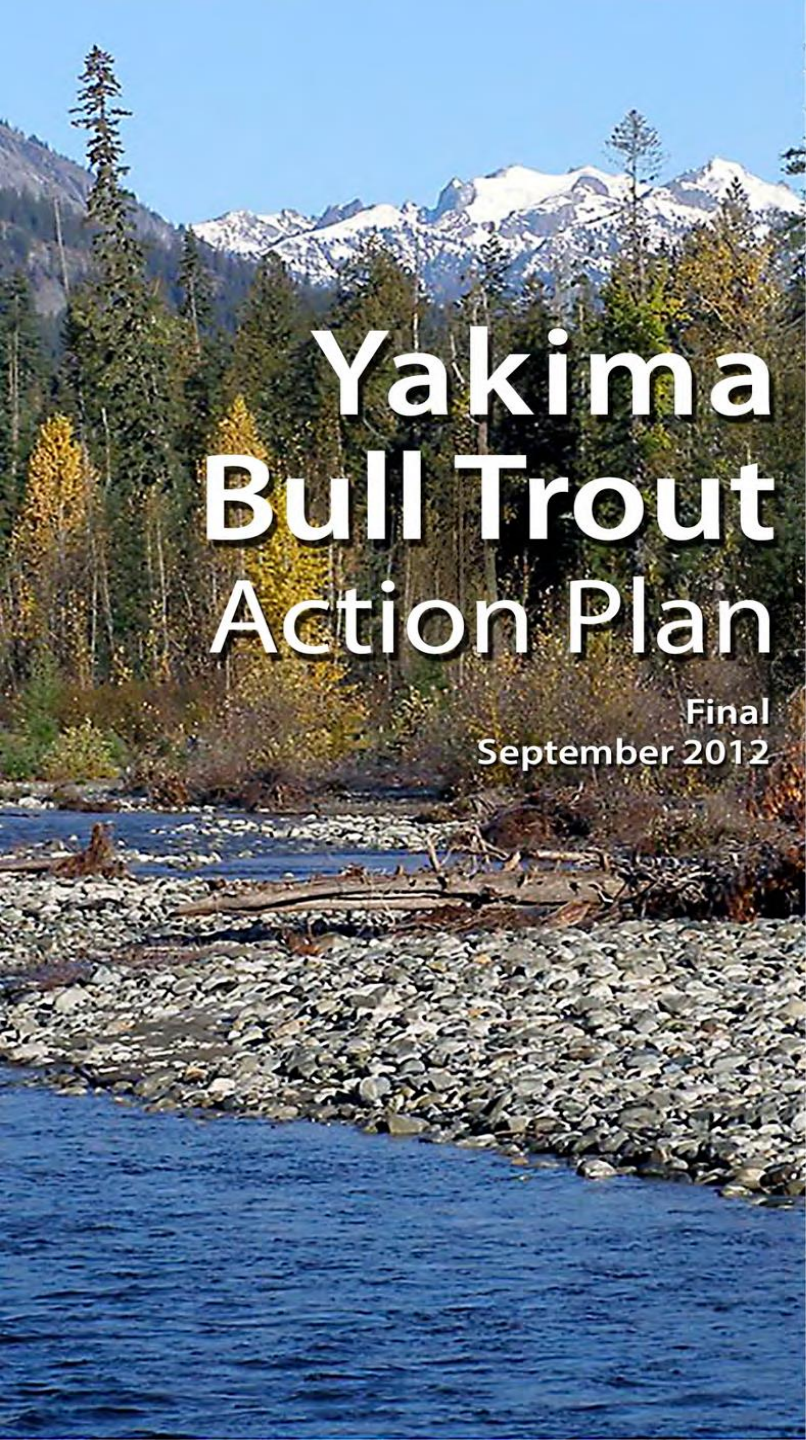


Indian Creek - North Spring Area



Yakima Basin Bull Trout Redd Counts





Yakima Bull Trout Action Plan

Final
September 2012



Yuki Reiss (YBFWRB)
Jeff Thomas (USFWS)
Eric Anderson (WDFW)
Jim Cummins (WDFW)

Input from Yakima Bull
Trout Core Area
Technical Team

Local Consensus on
Prioritized Actions

Goal – ID specific
actions that benefit
bull trout in the basin

Coordinated with Judy
Neibauer, USFWS

www.ybfwrb.org

Population Information

- ◆ Life history, connectivity, genetics, population monitoring history, redd count data, radio telemetry
- ◆ Habitat overview, habitat monitoring history, threats analysis, maps
- ◆ Prioritized population actions
- ◆ Extensive Bibliography



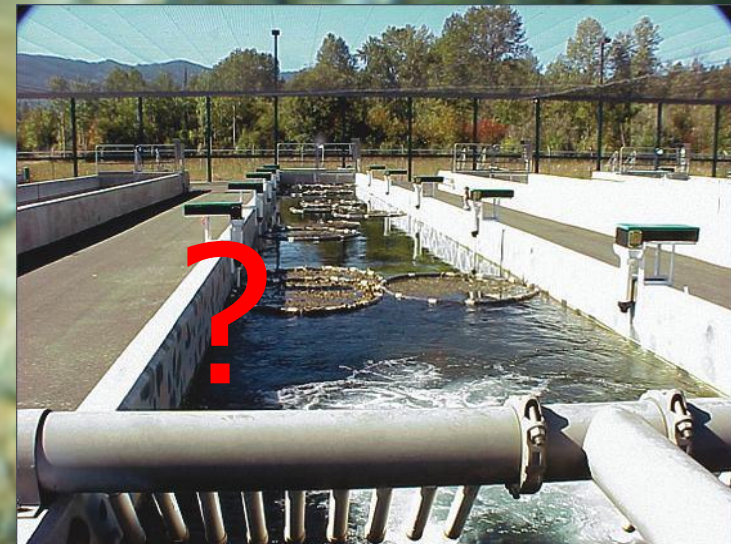
All Populations

- ◆ Monitor - redd counts, temp. brook trout introgression, etc.
- ◆ Protect – spawning, rearing, FMO
- ◆ Educate the public - BTTF



Future

- ◆ Potential supplementation or transplantation for kick starting weak or extirpated populations, mitigation tool.



Release All Bull Trout

What Are Bull Trout?

Bull trout are a native species of char, meaning they have a dark body and light spots. Bull trout require cold, clean water. The presence of bull trout is a sign of a healthy river system. Bull trout are found in cold water lakes and rivers in the Yakima Basin. **Bull trout are federally listed as Threatened under the Endangered Species Act and must be released immediately.**

No Black On The Fin, Put It Back In!

Anglers should be aware that non-native brook trout have similar characteristics to bull trout, which are **protected** under the Endangered Species Act and may not be retained. Bull trout do not have black worm-like markings or spots on their dorsal fin, unlike brook trout.

Anglers who catch a bull trout must release the fish unharmed without removing it from the water. Sacrifice your hook and not the fish – please cut your line if the fish swallows the hook.



Bull trout

Bull Trout (Protected)

- Clear dorsal fin with no black markings
- Has an olive colored body with yellow, cream, or pink spots
- Slightly forked tail



Brook trout

Brook Trout (Not Native, Not Protected)

- Wavy black markings on the dorsal fin and along the back
- Dark green to brown-colored body with red and yellow spots with a blue halo
- Has a square tail

LET 'EM PASS!

Rock Dams Block Fish



**Rock dams like these block fish and are illegal.
Fish can't move upstream to find cool water, spawn, and feed.**

We need your help to maintain good fish habitat! Please be a responsible recreationist and do not leave dams or other structures in the stream.

Report dams to Washington Department of Fish and Wildlife at 1-877-933-9847
or email: WILDCOMM@dfw.wa.gov

Please provide:

- Location of obstruction (lat-long or GPS coordinates are best)
- Description of obstruction (send photo if possible)
- Date/Time
- Name and contact information (optional)



A photograph of a stream flowing through a wooded area. In the foreground, a large, semi-circular metal grate is partially submerged in the water, with a wooden plank bridge structure extending from the bank to it. A black pipe is visible on the right bank, discharging into the stream. The stream is surrounded by dense green vegetation and trees. The sky is overcast.

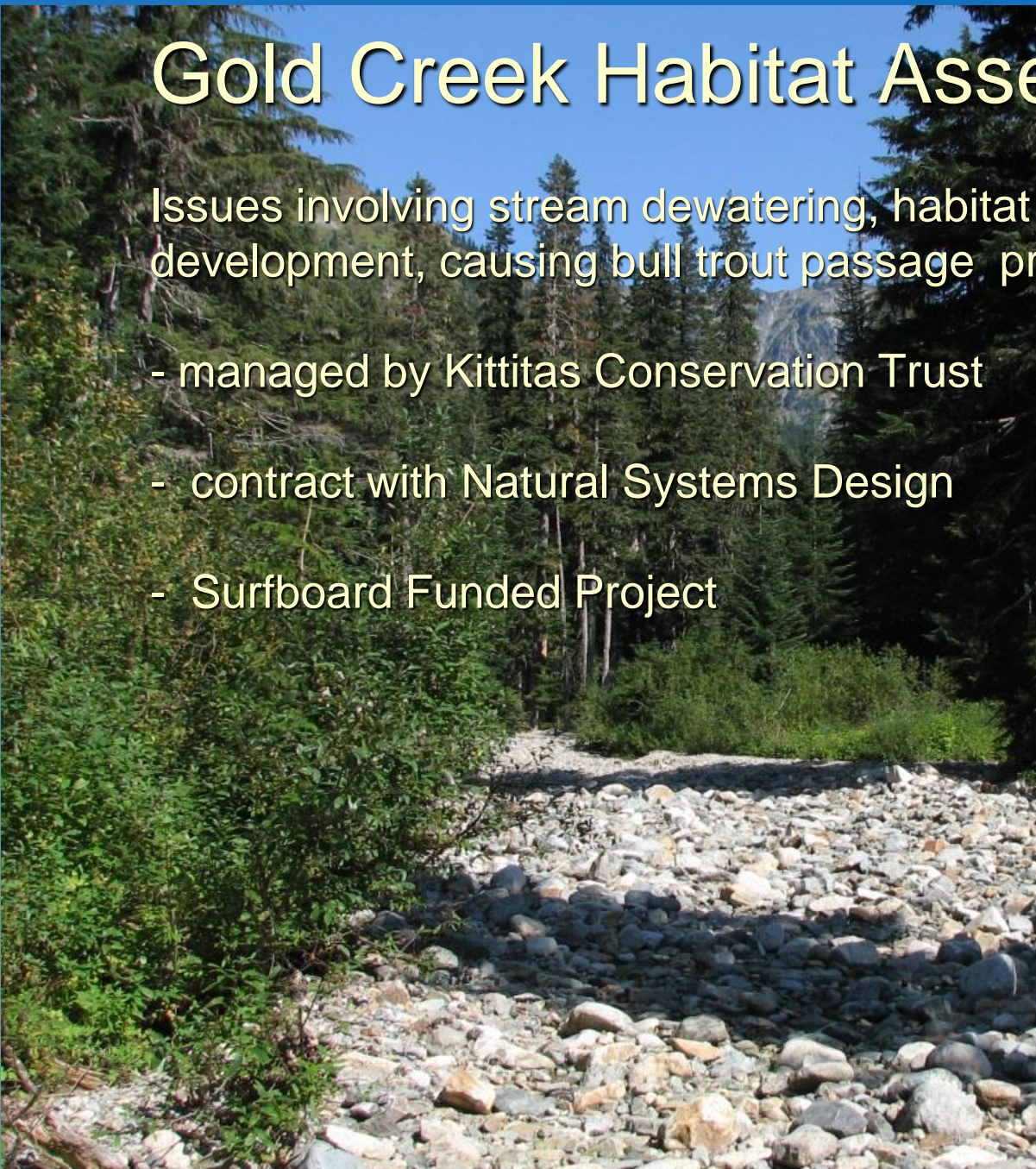
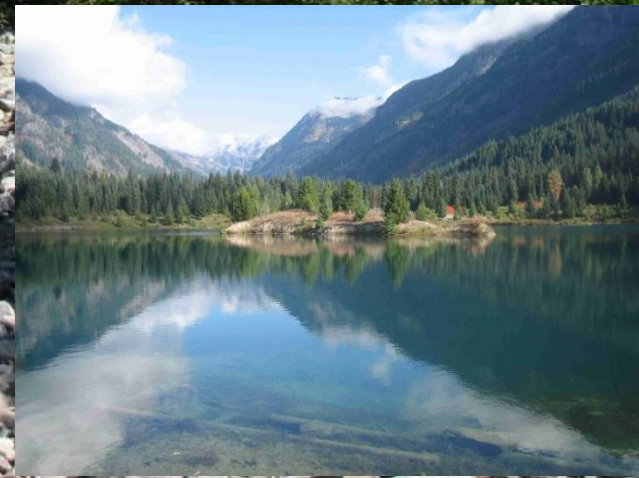
High Priority Action Populations

Ahtanum, Box Canyon, Crow, NF
Tieton, Gold

Gold Creek Habitat Assessment

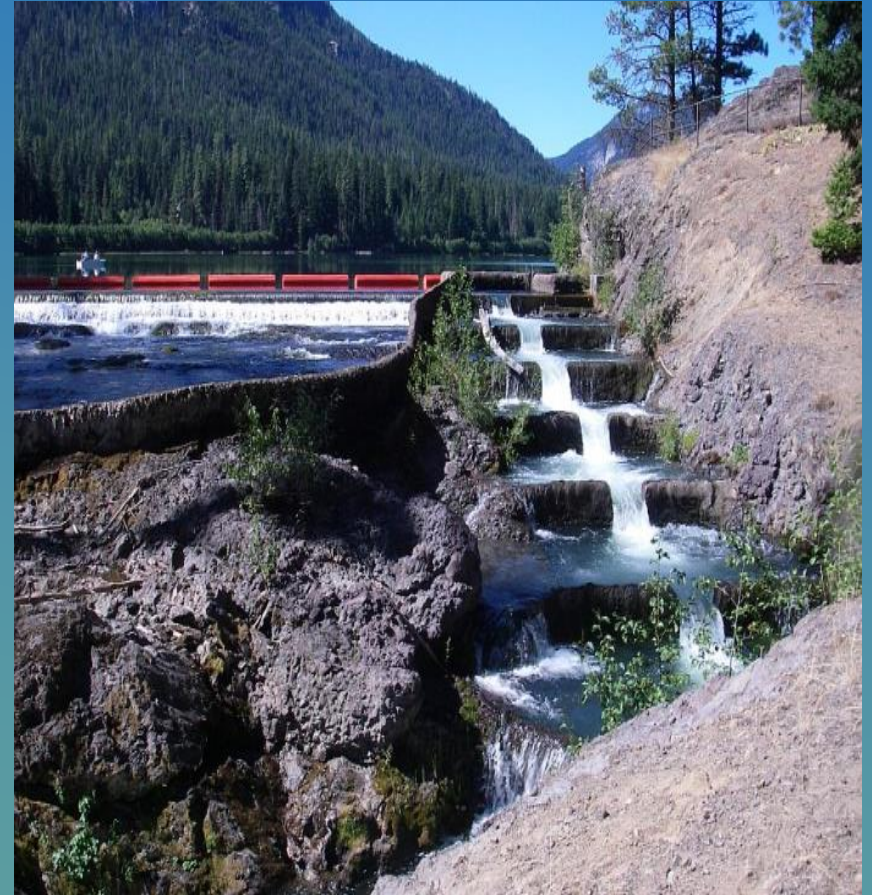
Issues involving stream dewatering, habitat degradation, development, causing bull trout passage problems / mortality.

- managed by Kittitas Conservation Trust
- contract with Natural Systems Design
- Surfboard Funded Project



Clear Lake Dam Fish Passage Assessment

-- funded by USBR & USFWS
USFWS lead investigators, 3+ year study



Food Web Structure of Kachess and Keechelus Reservoirs: Factors Limiting Bull Trout Production

**-- Funded via Yakima Basin Integrated Plan
Investigators -- University of Washington & WDFW**

**Keechelus
Reservoir**

**Kachess
Reservoir**



Questions / Comments?



W. Meyer