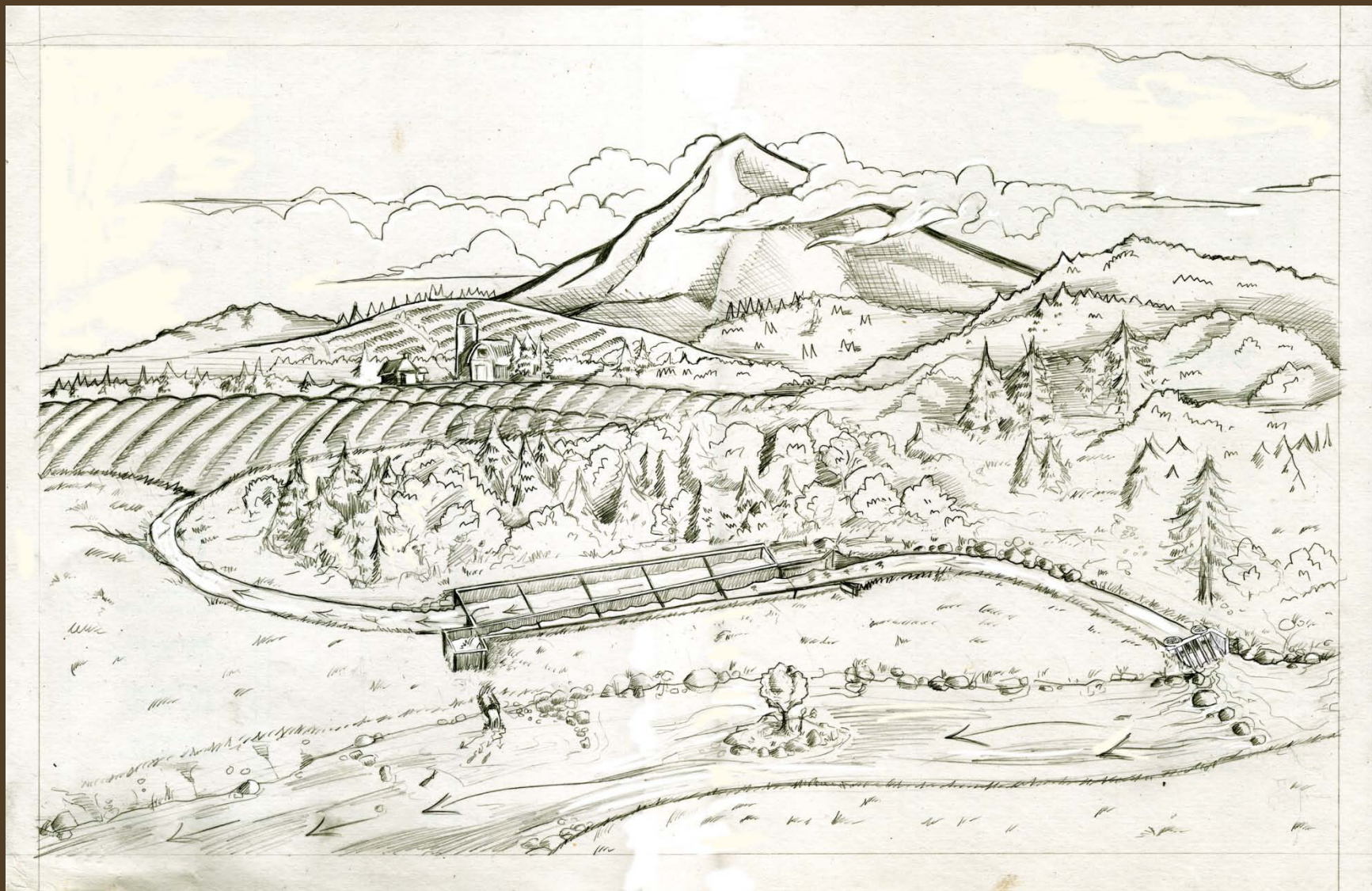
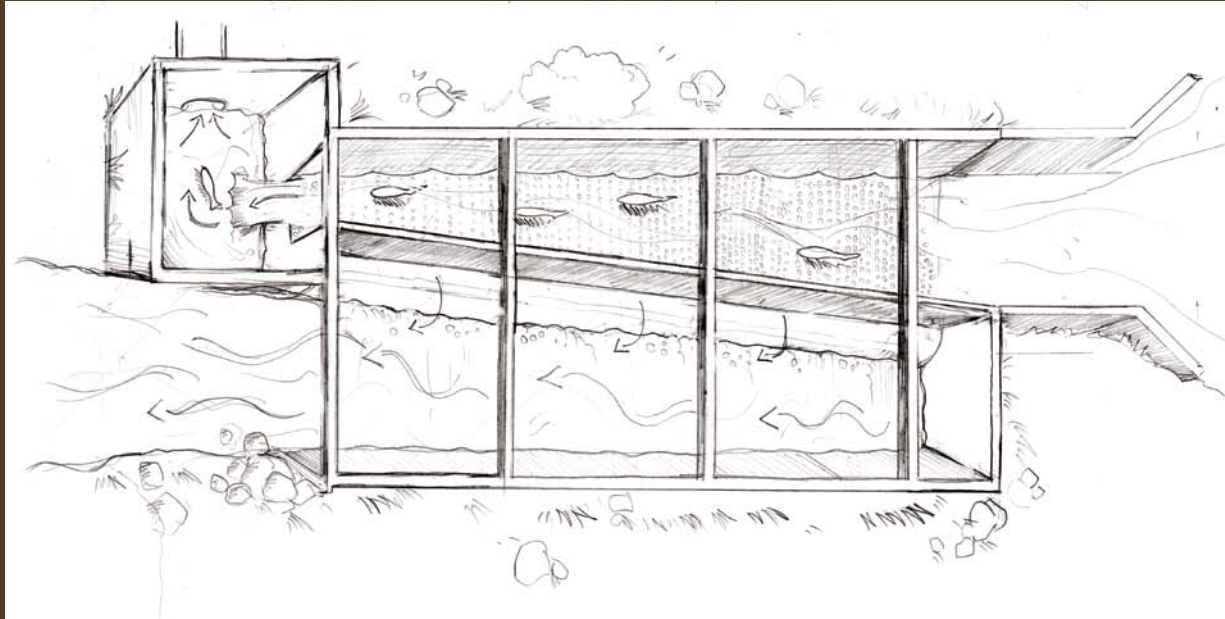
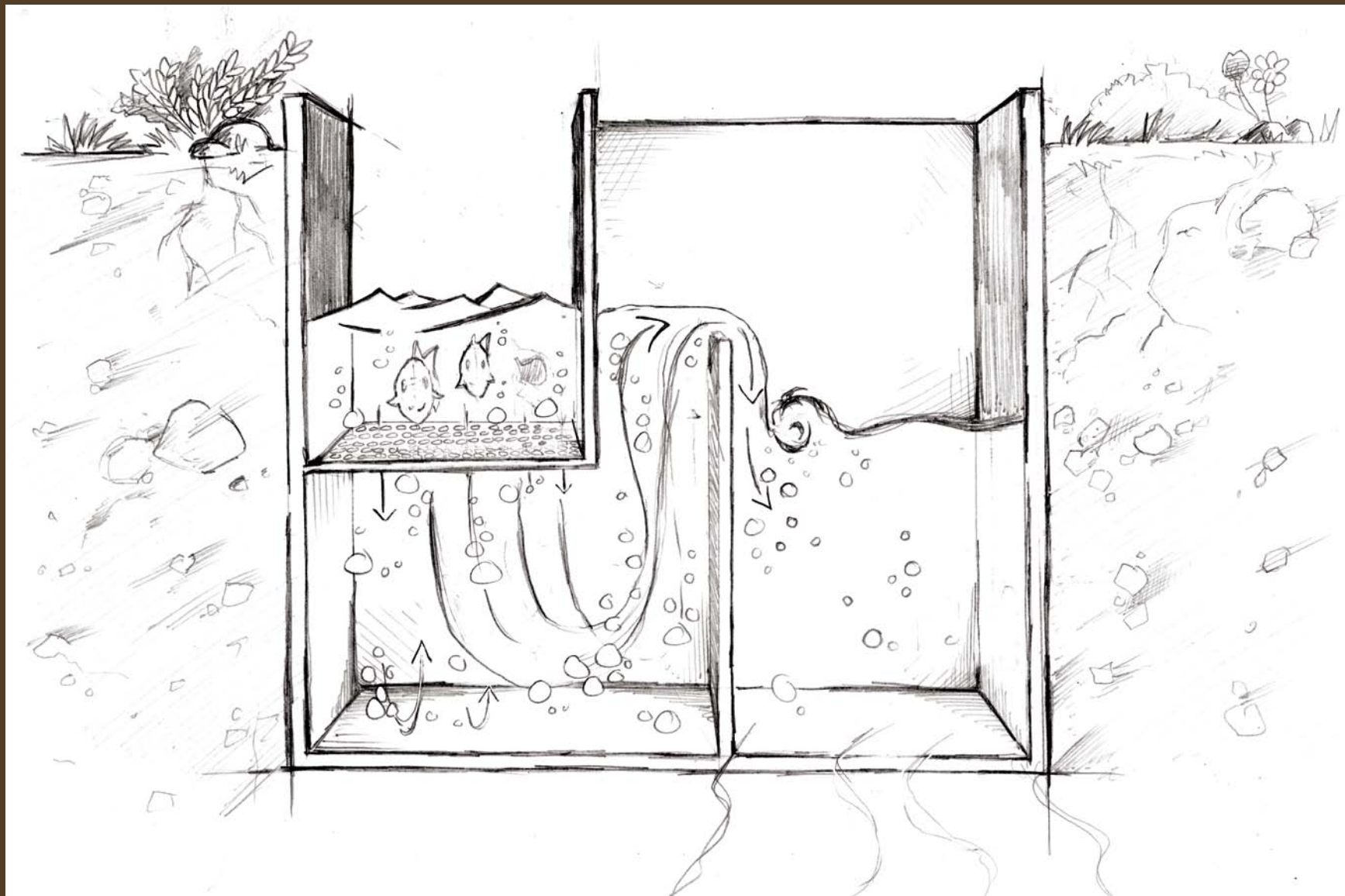


fca









Sediment and Debris



Eliot Creek



















NO
TRESPASSING



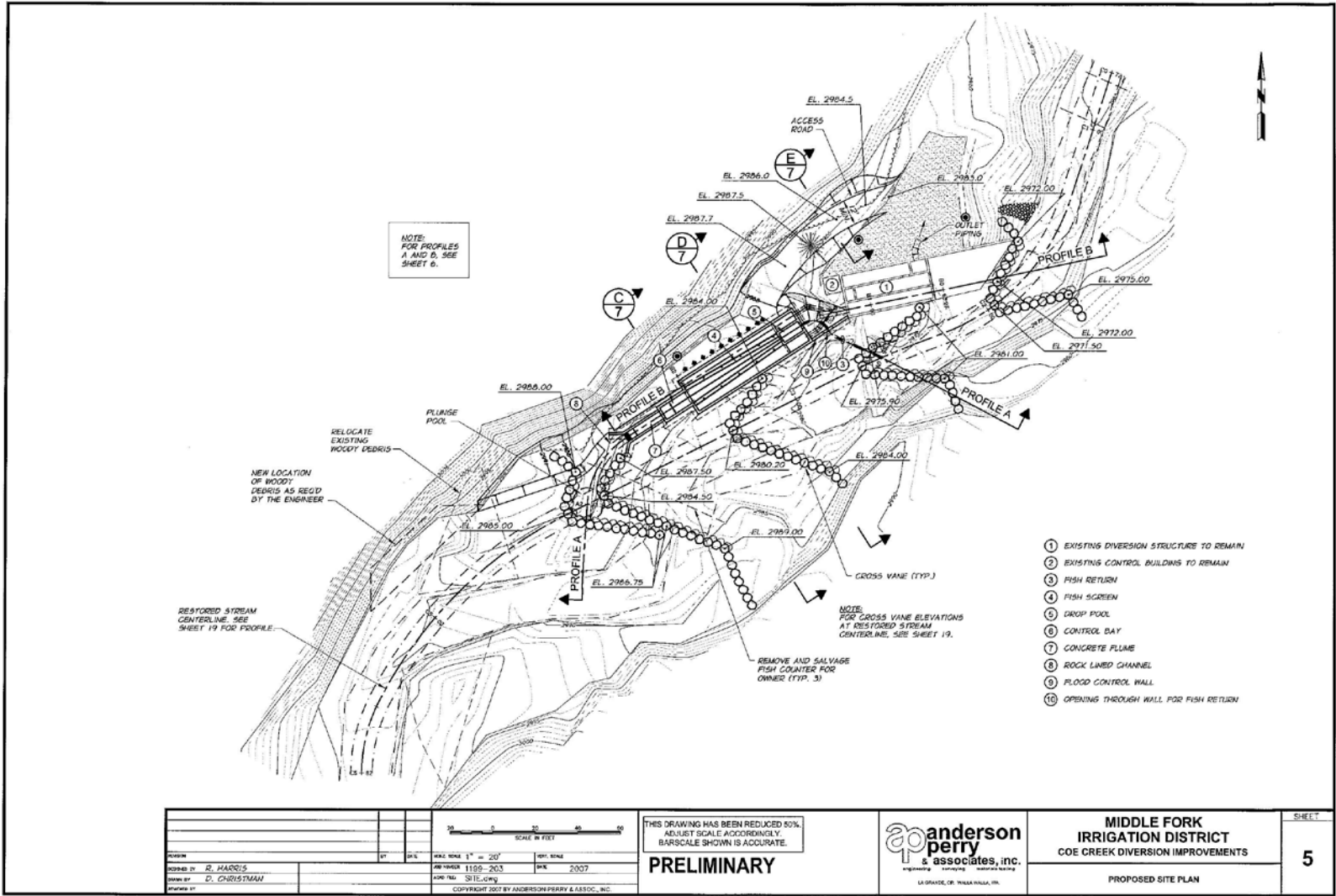


Coe Creek

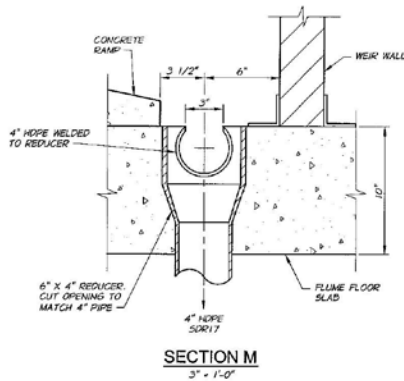




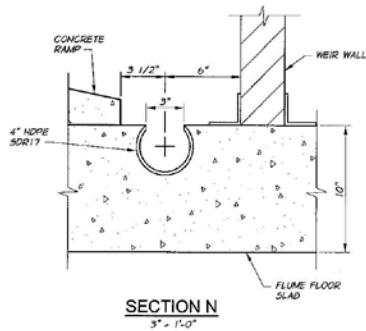
R:\MID_Cree_Creek_06.dwg\SITE.dwg, SITE, 5 9 2007 10:39:45 AM, dchristman



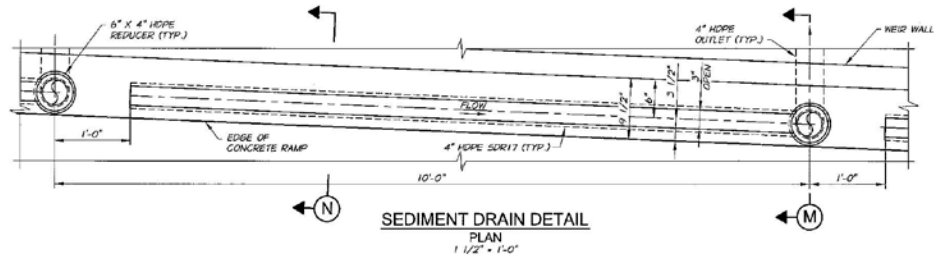
R:\MID\Coe_Creek_06.dwg (Struct)\Struct\Plan.dwg, SECT. F., 9/2007 10:40:20 AM, dchristman



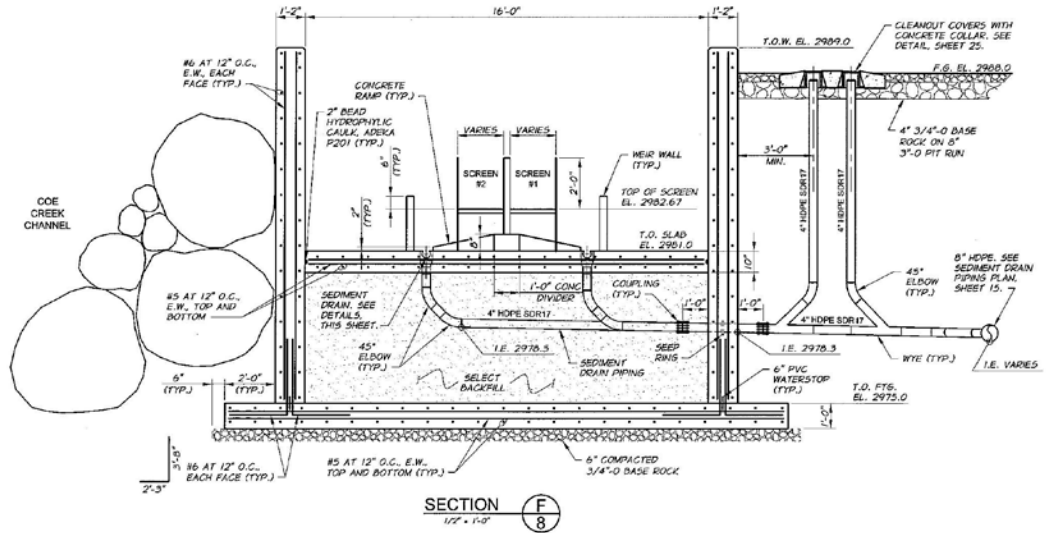
SECTION M
3" x 1'-0"



SECTION N
3" x 1'-0"



SEDIMENT DRAIN DETAIL
PLAN
1 1/2" x 1'-0"



SECTION F
1/2" x 1'-0"

<p>THIS DRAWING HAS BEEN REDUCED 50%. ADJUST SCALE ACCORDINGLY. BARSCALE SHOWN IS ACCURATE.</p>		<p>SCALE IN FEET</p>	
<p>DESIGNED BY: R. HARRIS</p>	<p>DATE: 08/2007</p>	<p>DATE NOTED: 08/2007</p>	<p>DATE: 08/2007</p>
<p>DRAWN BY: D. CHRISTMAN</p>	<p>PROJECT: COE CREEK DIVERSION</p>	<p>PROJECT: COE CREEK DIVERSION</p>	<p>PROJECT: COE CREEK DIVERSION</p>
<p>Copyright 2007 by Anderson-Perry & Assoc., Inc.</p>			

PRELIMINARY

Anderson Perry & Associates, Inc.
a & associates, inc.
engineering surveying material testing
LA GRANDE, OR 97146, WA

MIDDLE FORK IRRIGATION DISTRICT
COE CREEK DIVERSION IMPROVEMENTS
INTAKE AND SCREEN STRUCTURE - SECTIONS V

SHEET
12

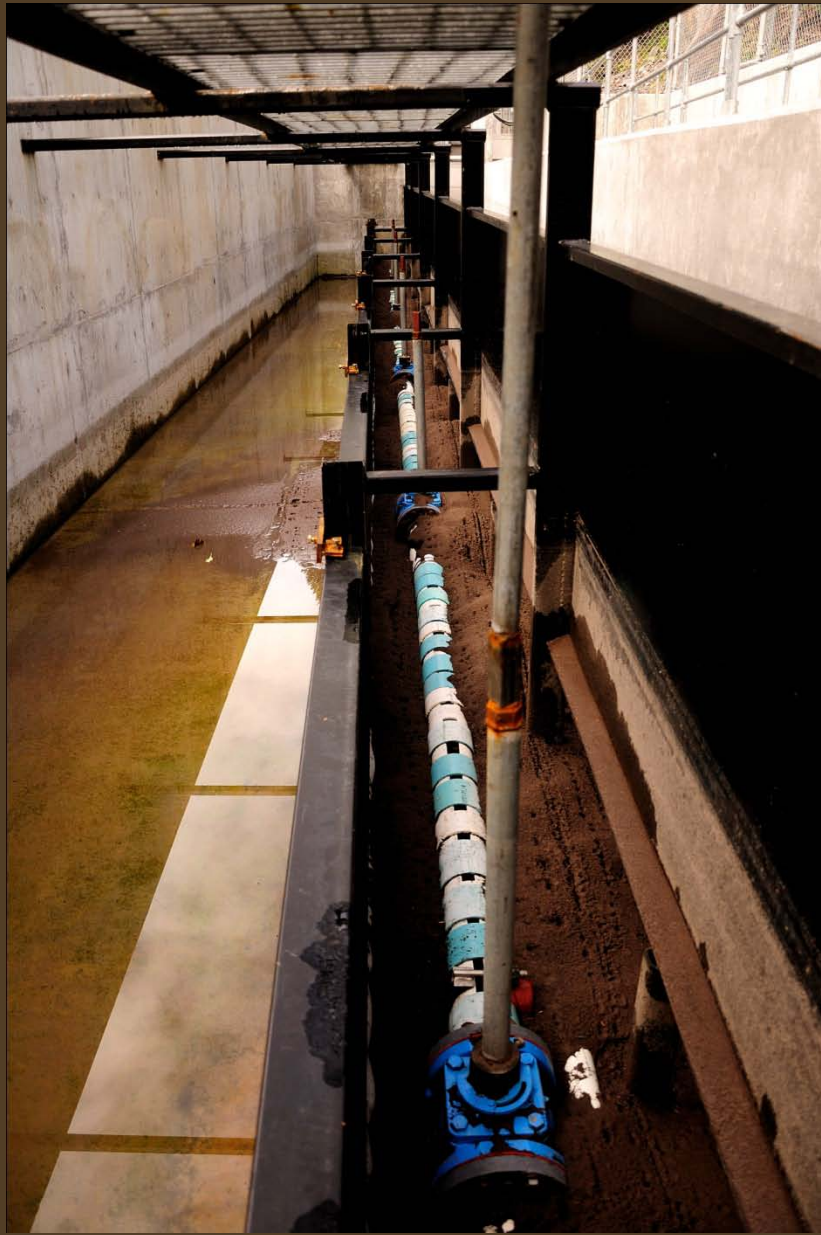






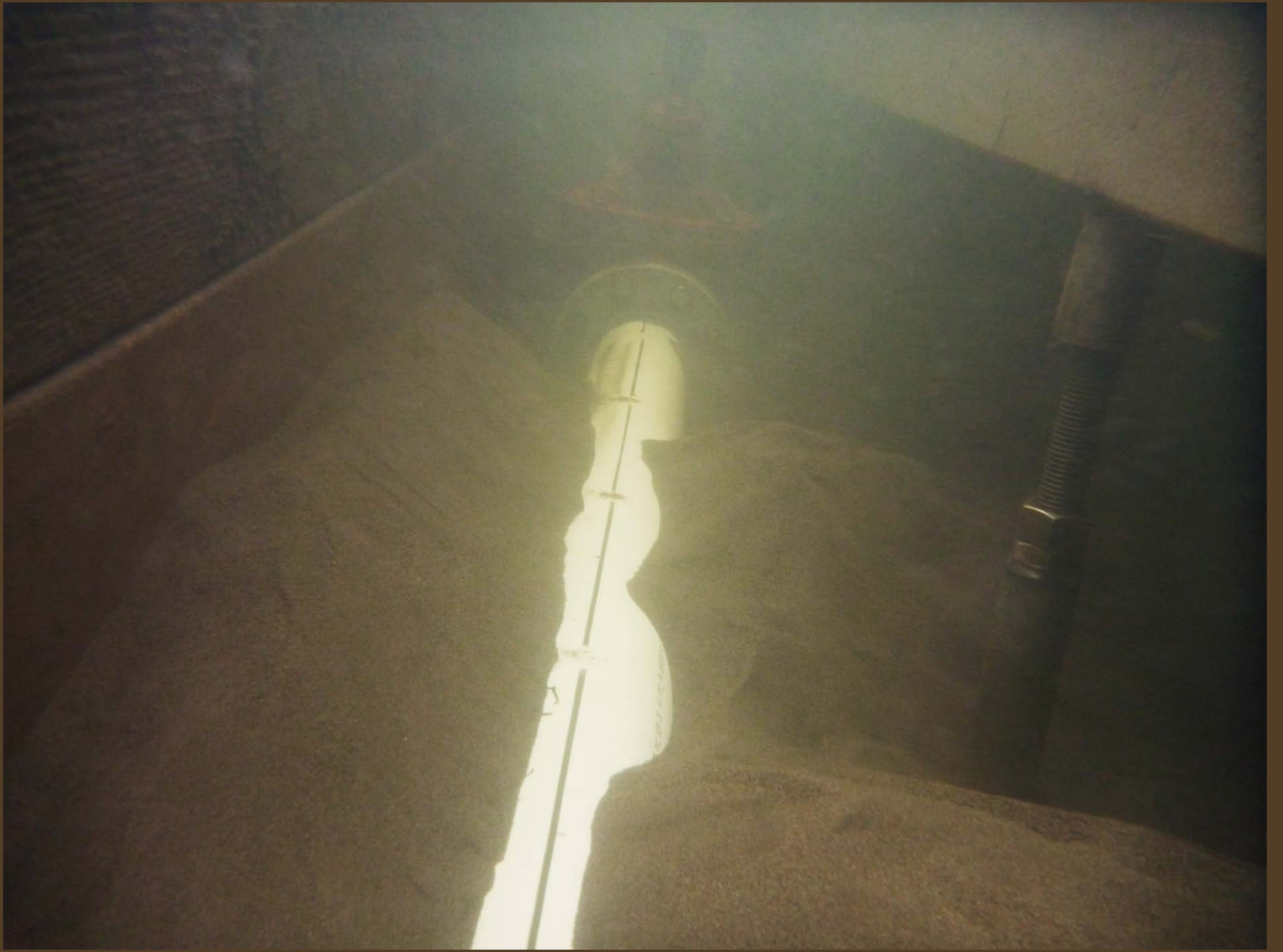












Crabtree Creek



Herman Creek



Hood River



Wolf Creek

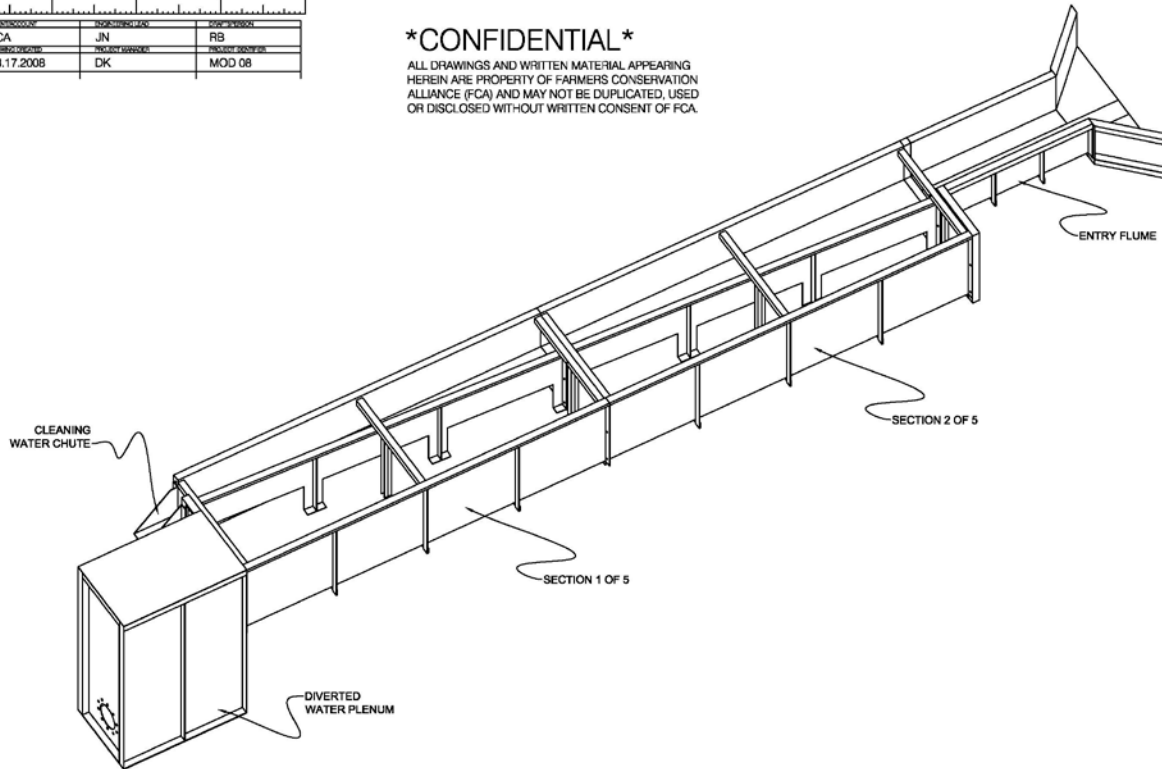


Modular Screens

PROJECT NO.	DESIGNER/DATE	APPROVER/DATE
FCA	JN	RB
03.17.2008	DK	MOD 08

CONFIDENTIAL

ALL DRAWINGS AND WRITTEN MATERIAL APPEARING HEREIN ARE PROPERTY OF FARMERS CONSERVATION ALLIANCE (FCA) AND MAY NOT BE DUPLICATED, USED OR DISCLOSED WITHOUT WRITTEN CONSENT OF FCA.



MODULAR 08 SYSTEM

U.S. PATENT # 6524028

1.5 CFS TO 4 CFS W/ OPTIONS



14 oak st, suite 302
hood river, or 97031
541-718-6085
www.fcasolutions.org
info@fcasolutions.org

Modular Farmers Screen Installations





















Contact Information



Roy Slayton

503.260.9288

541.716.6085

Roy.slayton@fcasolutions.org

Les Perkins

541.490.4062 cell

541.716.6085

Les.perkins@fcasolutions.org