

Yakima River Delta Enhancement Project:

Rethinking fish passage and stakeholder engagement in the Yakima Delta



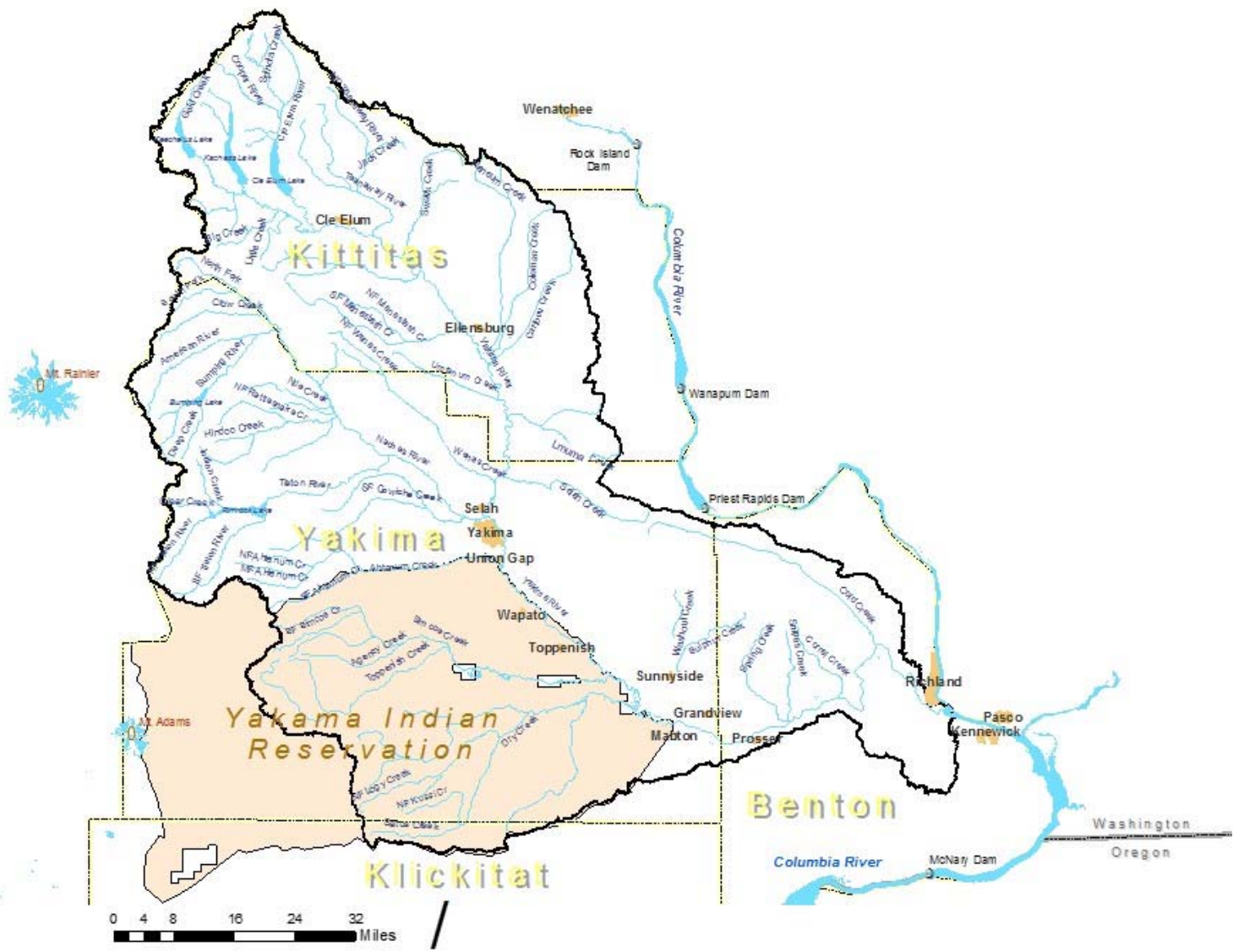
Washington
Department of
**FISH and
WILDLIFE**



**BUILDING A FUTURE FOR WATER,
WILDLIFE AND WORKING LANDS**
YAKIMA RIVER BASIN INTEGRATED WATER RESOURCE MANAGEMENT PLAN

Mid-Columbia Fisheries Enhancement Group



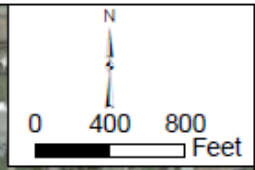








Bateman Island



Mid-Columbia Fisheries Enhancement Group
Bateman Island
Causeway Concept Design Project
Figure 1.1
Project Location Map



Early concerns regarding salmon and steelhead survival in the lower Yakima River

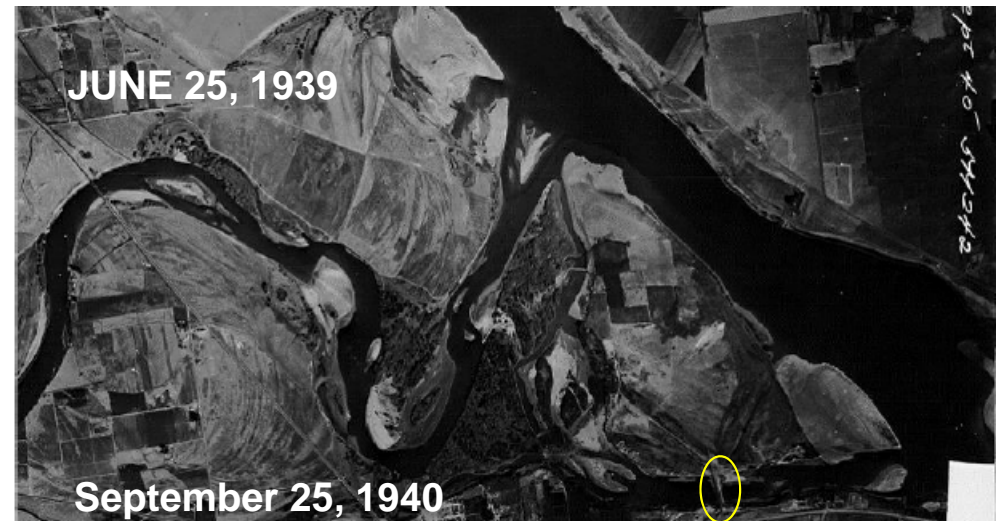
- **What factors are limiting juvenile and adult passage and survival in the lower Yakima River?**
- **Are high water temperatures in the backwater of Bateman Island causeway affecting juvenile and adult fish passage and survival?**
- **Are high concentrations of warm water fish species causing predation near Bateman Island?**
- **Can flow patterns and water quality at the mouth of the Yakima River be modified to improve fish passage and reduce mortality?**

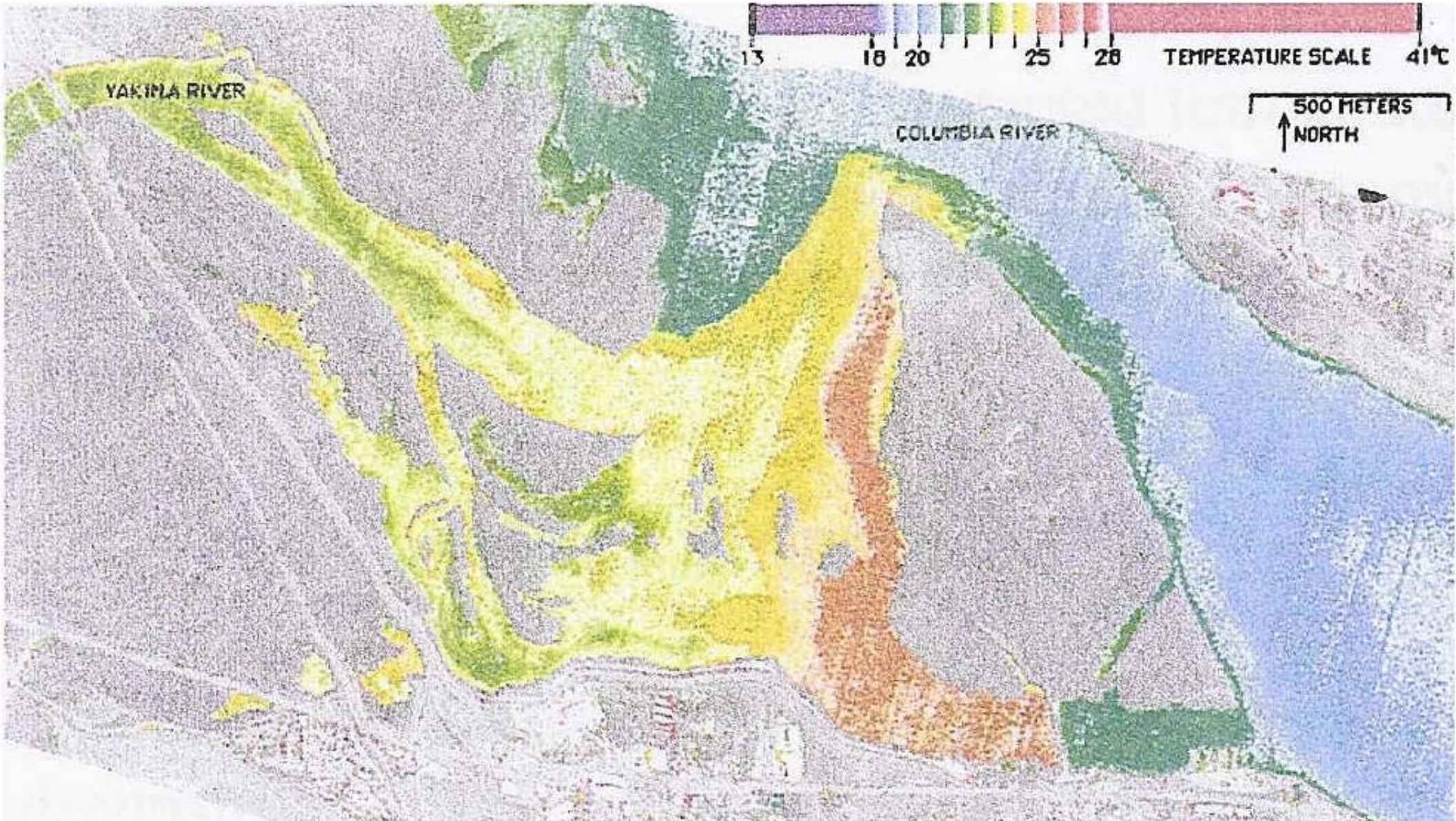
Previous Studies

- 1998, 2004, 2011, 2014

Bureau of Reclamation, U.S. Army Corps of Engineers,
Benton Conservation District, Mid-Columbia Fisheries
Enhancement Group

- High temperatures
- Open causeway
- Temps reduced with flow on south side of Bateman Island





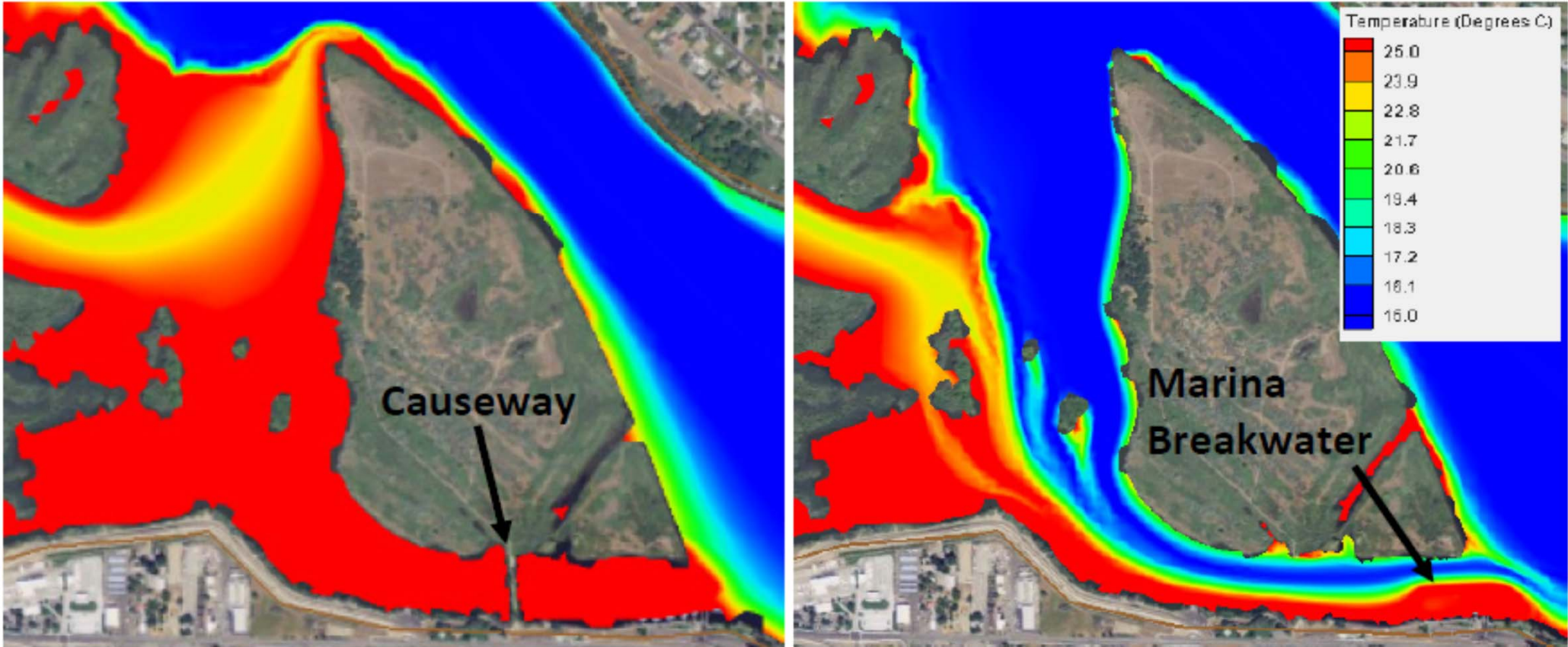
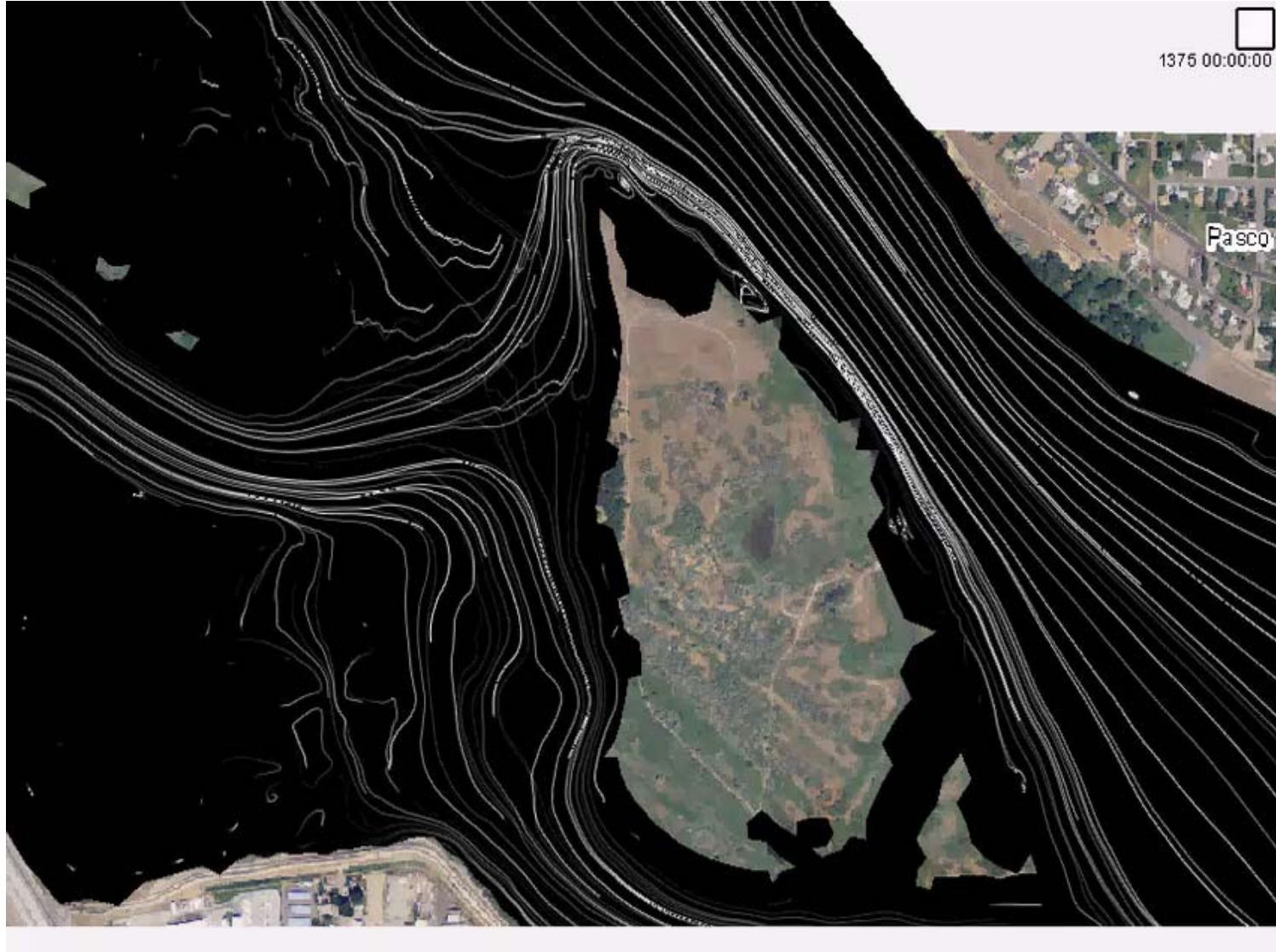


Figure EX1: Simulated Temperatures for a Moderately High Columbia River Discharge on July 8, 2012, (Left) Existing Conditions, (Right) Alternative 8, Full Causeway Removal with a Breakwater around Marina

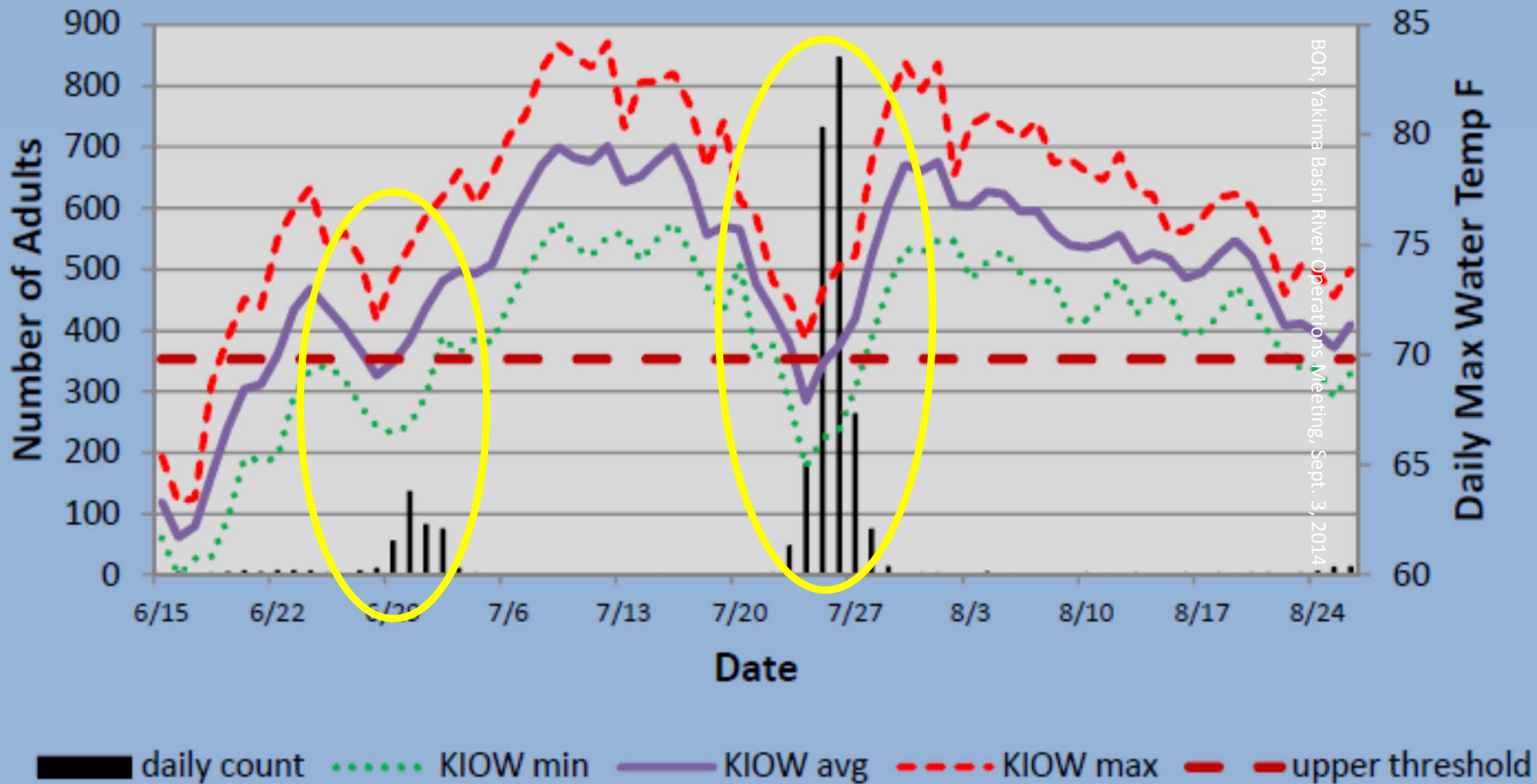


1375 00:00:00

Pasco



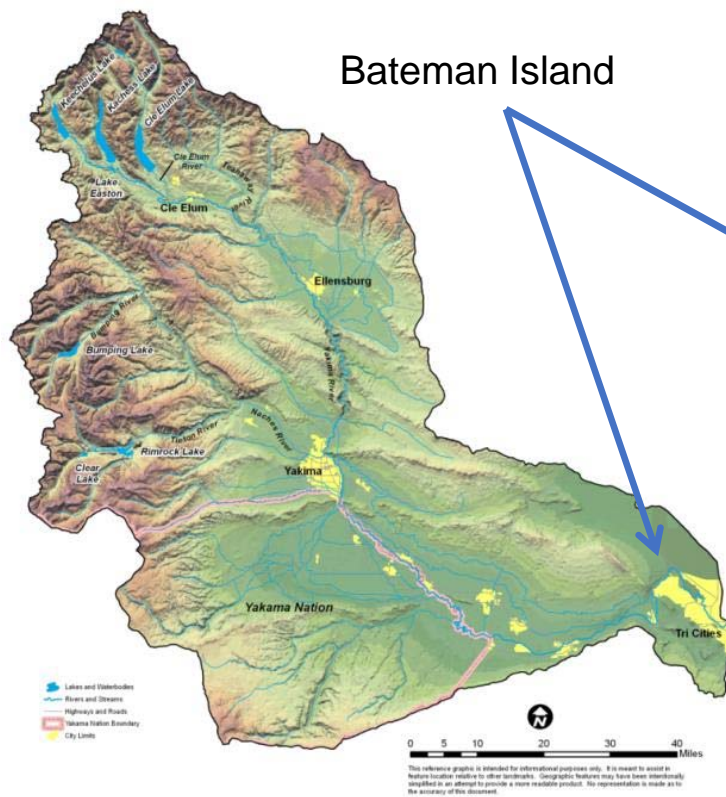
2014 Sockeye Run, Prosser Dam





Source: Michael Porter, YN

Gateway and Cornerstone to Millions of Upstream Investment Dollars





Community Input

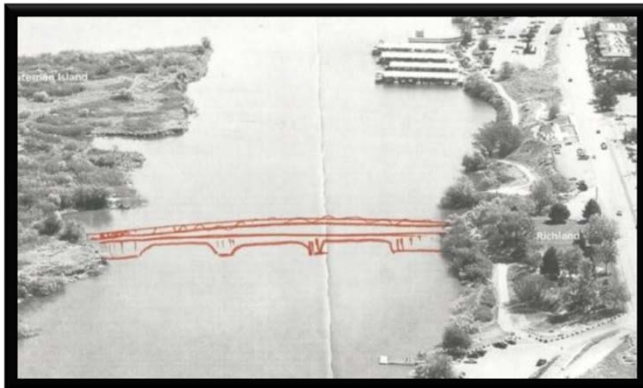
April 2014

- Focus = fisheries
- Hand drawn by public

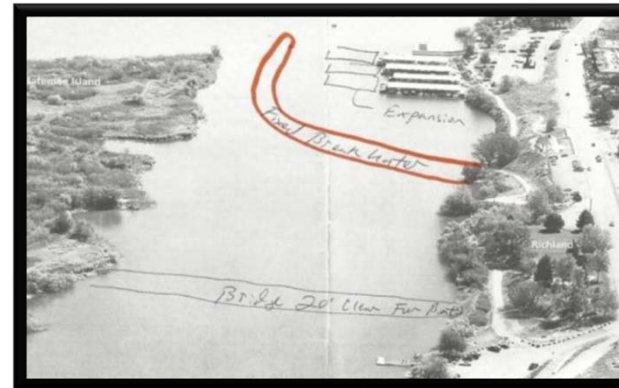
Full breach



Partial breach



Full breach & breakwater





LOCAL JUNE 25, 2016 6:31 PM

Bateman Island causeway eyed for breaching to save salmon, steelhead

HIGHLIGHTS

Land bridge hurts salmon, steelhead

Richland wants to protect public access, private marina

LOCAL JULY 6, 2016 4:30 PM

Momentum builds for Bateman Island access, marina

HIGHLIGHTS

Port of Kennewick to lend support to island access

State contemplates helping fish by breaching

LETTERS TO THE EDITOR JULY 10, 2016 2:18 AM

Letter: Breaching Bateman Island causeway would create unmanageable current for boaters

LETTERS TO THE EDITOR AUGUST 2, 2016 3:55 AM

Letter: Inconvenience to boat owners shouldn't stop breach of Bateman Island causeway

EDITORIALS JULY 6, 2016 5:03 AM

Our Voice: State responsible for mitigation if Bateman causeway breached

Expanding Outreach and Partnerships

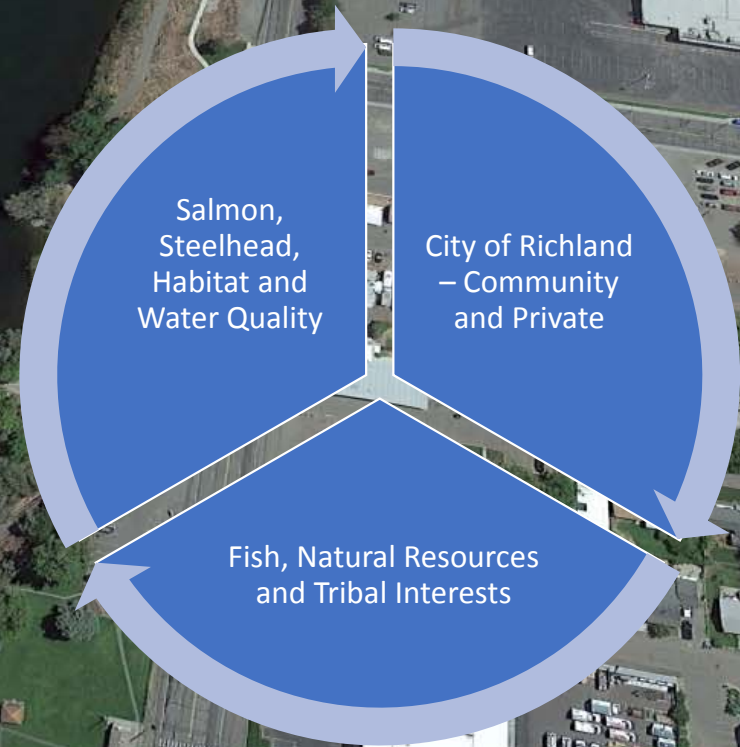
September-December 2016: 13 WDFW/Kennewick Irrigation District Presentations

Key Audiences: Cities, Ports, Visit TRI-CITIES, Mosquito Control, Lower Columbia Audubon, Richland Rod and Gun, Coastal Conservation Association



Draft Project Statement:

Restore the Yakima Delta to benefit migrating salmon and steelhead, improve overall water quality and habitat, protect cultural resources, and maintain and create opportunities for public recreation and private interests, including a boat launch and marina, through local and regional planning, public and private land management, and environmental regulation.





CONCRETE WITH EXISTING DUNE PLANT

BOAT CENTER

LAUNCHING RAMP

FEE COLLECTION STATION

MARINA BOAT BASIN

TOUR BOAT MOORAGE
FLOAT PLANE MOORAGE

CONVENTIONS
RESTAURANTS
RETAIL SHOPS
HOTEL

BKE/RA

PERFORMANCE LAWN
CONCERTS

RESTROOMS

PAVILION
EXHIBITS
SPORTS ARENA

RESTROOMS

SERVICE BUILDINGS

2018 Project Update

- In 2016, December Stakeholder meeting included US Army Corps of Engineers (USACE) who suggested Section 1135 funding was a possibility.
- Stakeholders include: State and Federal Natural resource agencies, Tribal interests, City of Richland, Mid-Columbia Fisheries, and Columbia Park Marina.
- City of Richland now actively engaged in the process.
- Letter of Intent drafted and delivered to USACE March 8, 2017.
- Awaiting USACE decision.



The Continuing Vision

Remove a significant fish passage barrier

- Improve river conditions for migratory salmon and Steelhead
- Improve overall environmental and recreational conditions.

Access

- Address public access
- New recreational opportunities

Marina

- Relocation or Design Modification
- Improvements to the Yakima Delta will have long-term positive impacts



Bateman After 2017 Fire - Courtesy of News Talk 870

