

Klickitat Subbasin Fish Passage Facility Improvements to Support Hatchery Reform

Bill Sharp, Research Scientist
Yakama Nation Fisheries – YKFP

Presentation Outline:

Background

Castile Falls Fish Passage

Lyle Falls Fish Passage Facility

Klickitat Hatchery Bridge & Juvenile Transfer

Update and Timeline for Future Actions



Scientific Framework Guiding Klickitat Hatchery Reforms

Yakima/Klickitat Fisheries Project (1982):

Cle Elum Supplementation & Research Facility scientific findings used to reform Klickitat Hatchery production.

Hatchery Scientific Review Group:

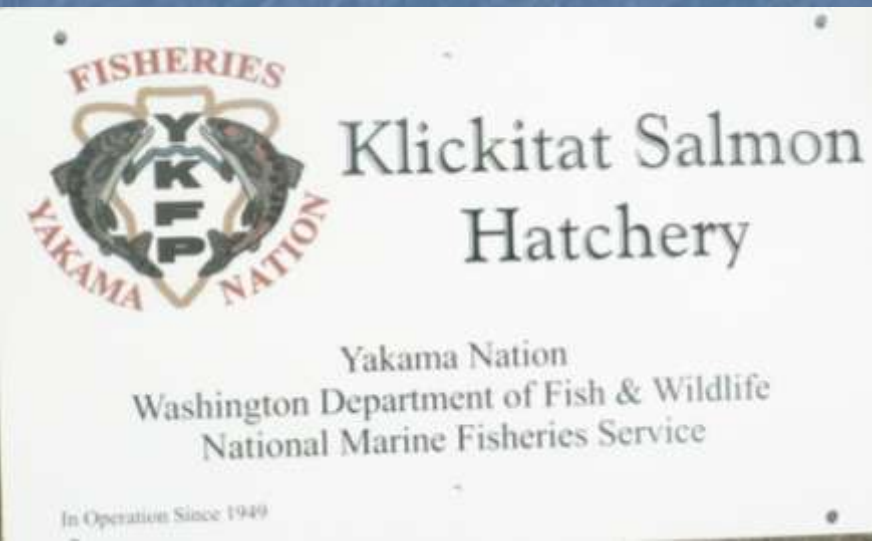
Design and operate hatchery programs in a scientifically defensible manner.

Clear, specific, quantifiable harvest and conservation goals for natural & hatchery populations.

Monitor, evaluate and adaptively manage hatchery programs.

Klickitat Hatchery - Facility Transition

- Transfer operation of Mitchell Act facilities from WDFW to the Yakama Nation.
- Castile Falls Fishways
- Lyle Falls Fishway
- Klickitat Hatchery



Klickitat Subbasin

Castile Falls (Rm 64.0)

Klickitat Hatchery
(Rm 43.0)

Wahkiacus Hatchery
(proposed) (Rm 17.0)

Lyle Falls Adult Trap
(Rm 2.2)



Columbia Basin Fish Accords - Klickitat Subbasin

Capital Construction Projects:

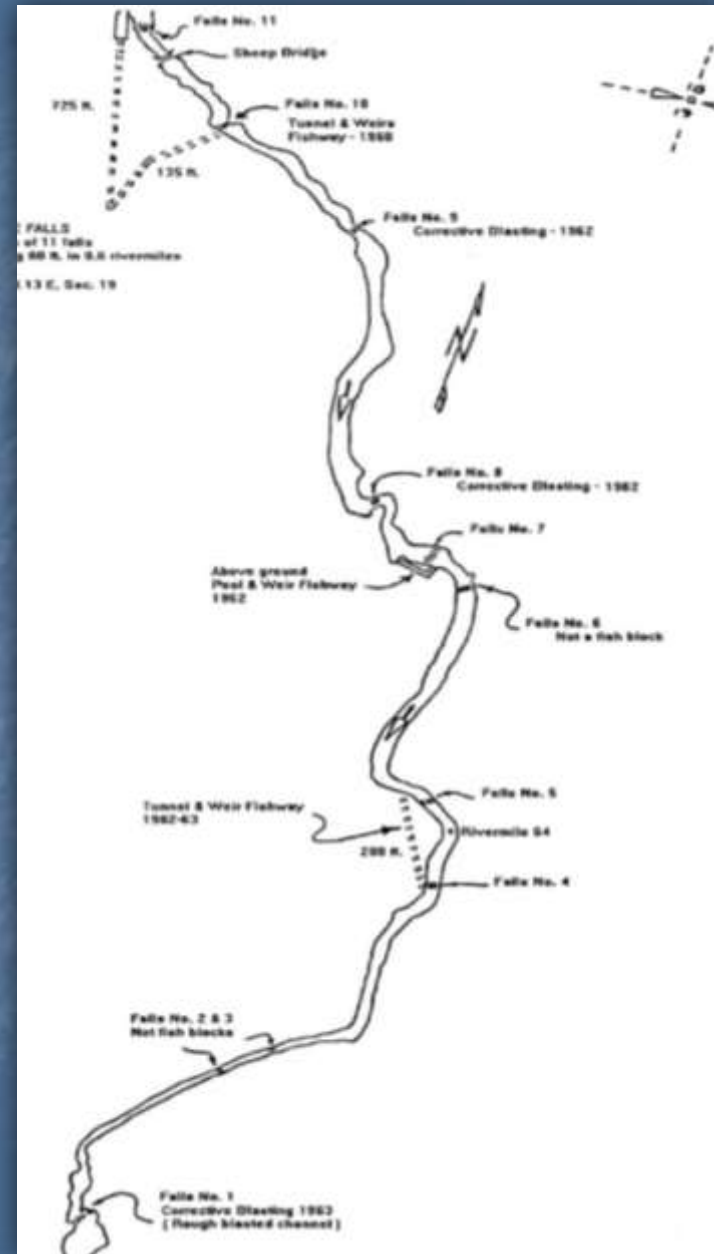
- Castile Falls Monitoring Facility – 85% complete
- Lyle Falls Passage & Monitoring Facility – 70% complete
- Klickitat Hatchery Road/Bridge – Complete

Castile Falls Monitoring Facility

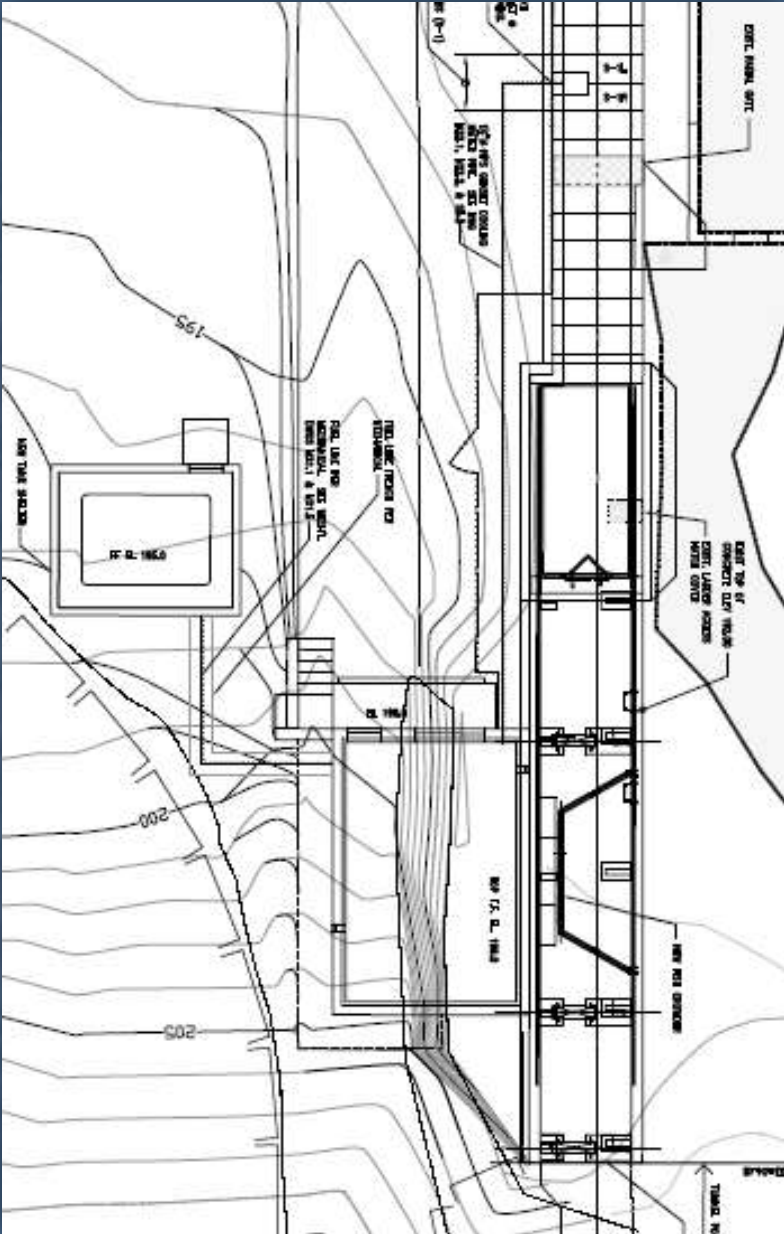
Passage Improvements Completed

- 2004 - 2005
- Over 55 Miles of Habitat Accessible
- Reduced Fishway O&M

Monitoring Facility (Digital Imagery PIT Detection)



Castile Falls Monitoring Facility

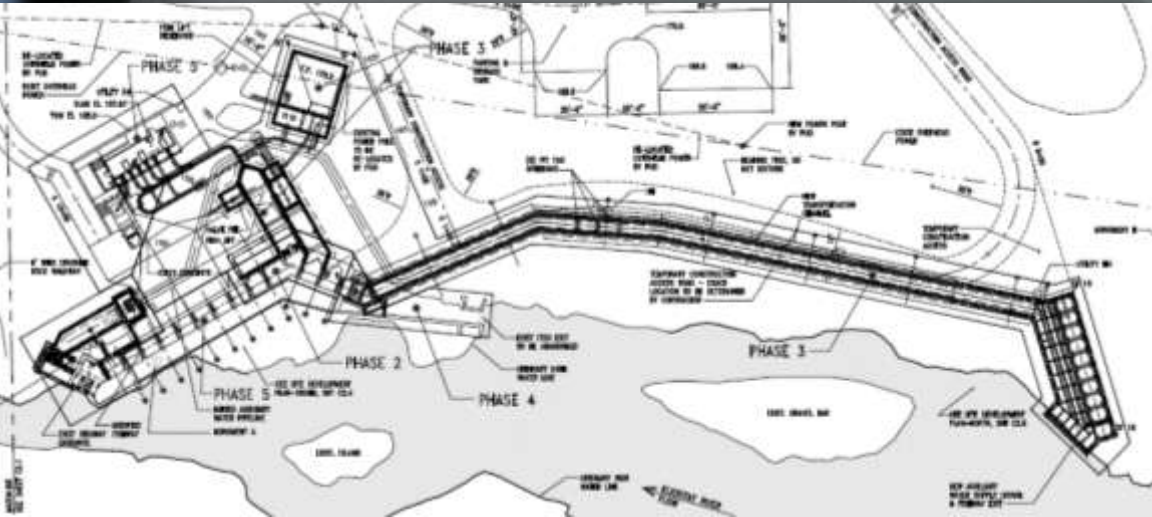




Lyle Falls Fishway #5 Passage & Monitoring Facility

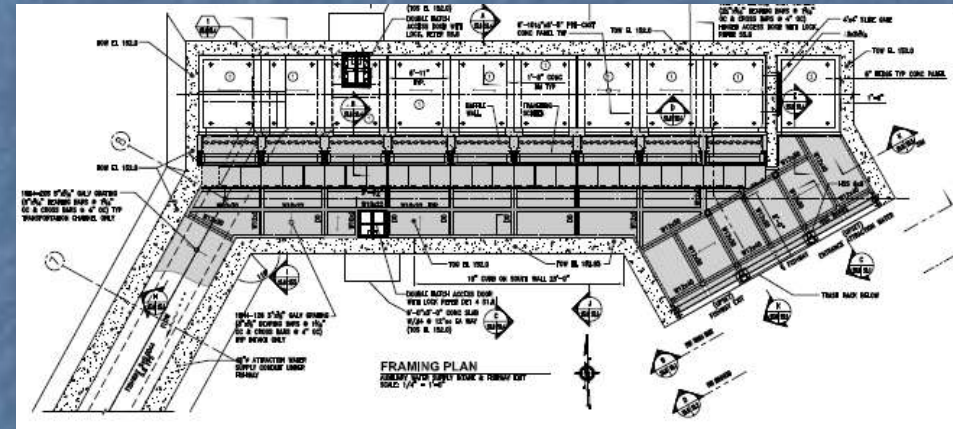
- Construction Underway
- R,M&E Facility
- Meet NOAA passage criteria
- Brood collection
- Lamprey passage
- 90+ highly skilled jobs





Fishway Exit & Water Intake

- Nine 10' Traveling Screens
- Hydraulically Driven
- High pressures wash
- HMI controls



Adult Transportation Channel Auxiliary Water Line

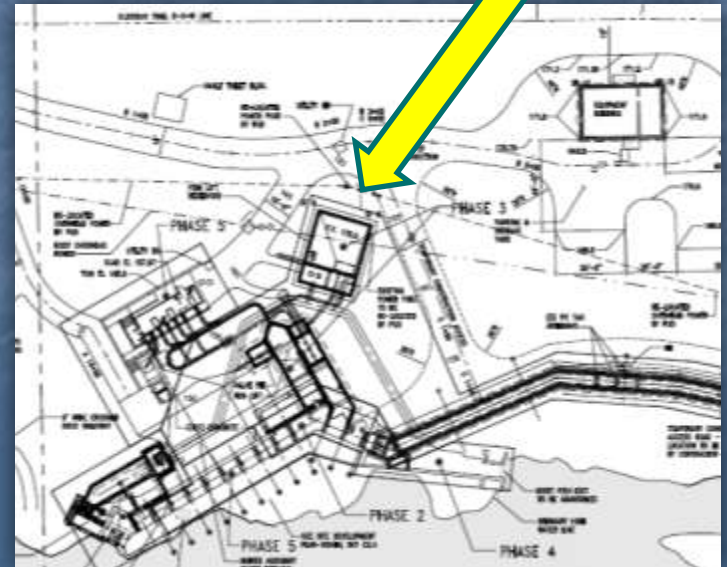
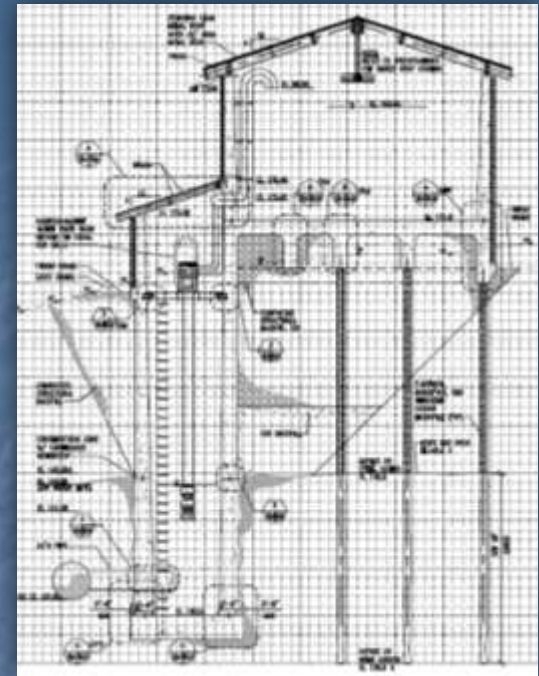
- 350' long
- PIT Detection Array
- 110 cfs Aux. Water

A photograph showing a large-diameter pipe being lowered into a deep, narrow trench. The pipe is supported by a metal frame structure. Workers in orange safety vests and hard hats are visible around the trench. The ground is dark and appears to be excavated earth.



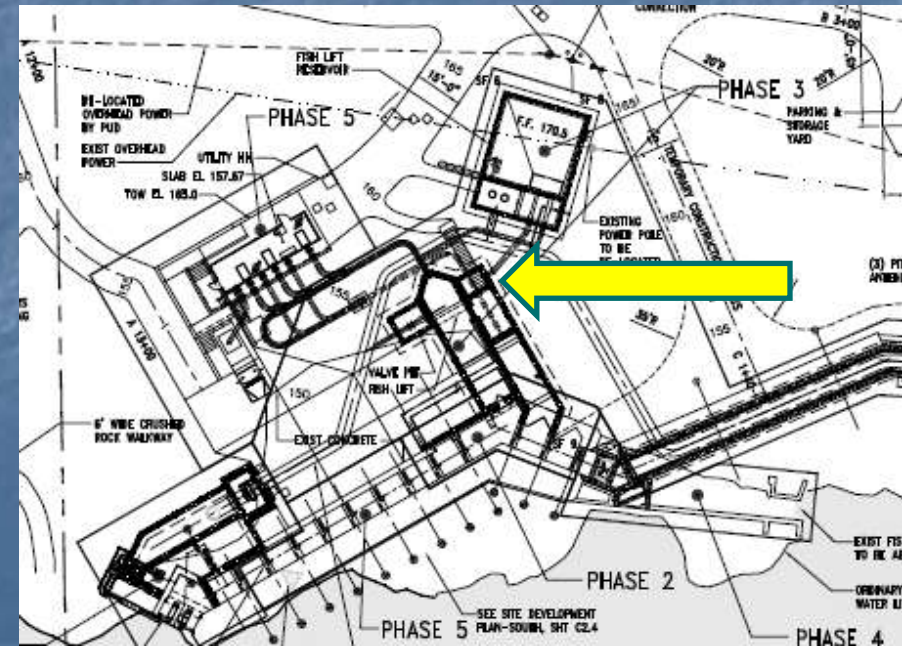
Fish Lift Reservoir

- 56,000 gallons
- 2 - 40 hp pumps

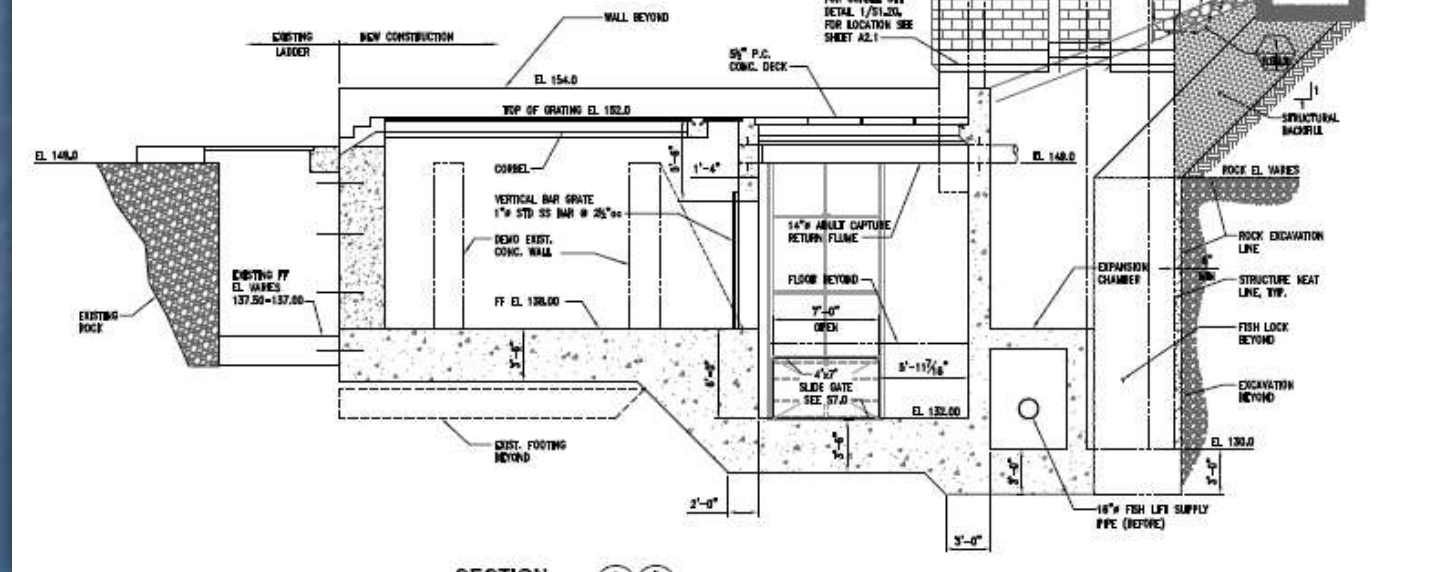


Fish Lift & Mechanical Crowder

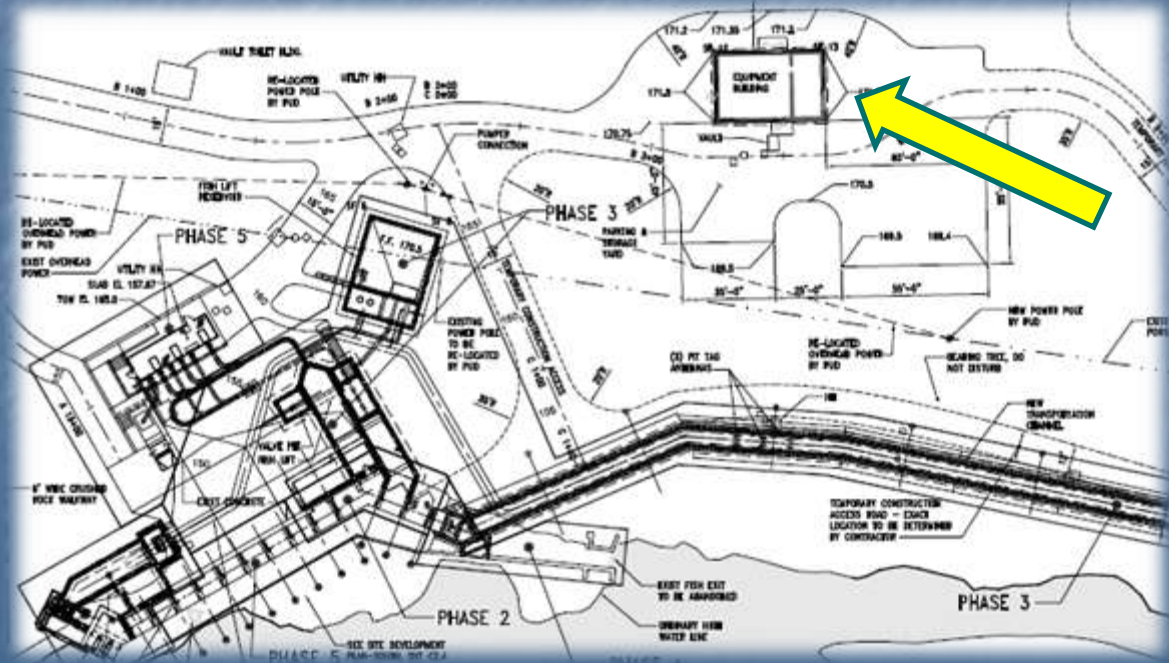
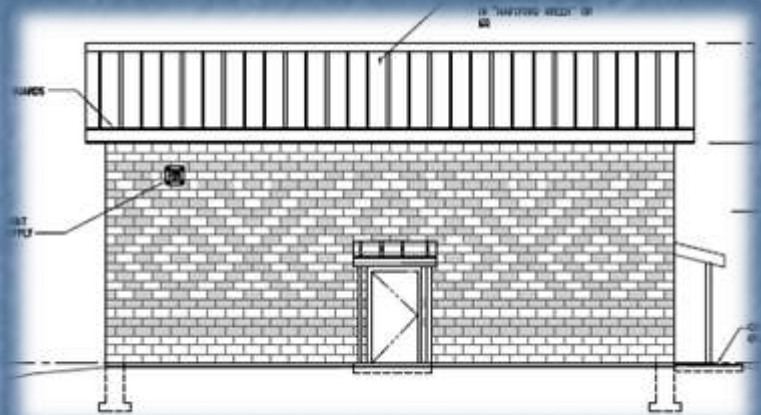
- 20,000 gallons/lift
- ~ 10 minute fill time



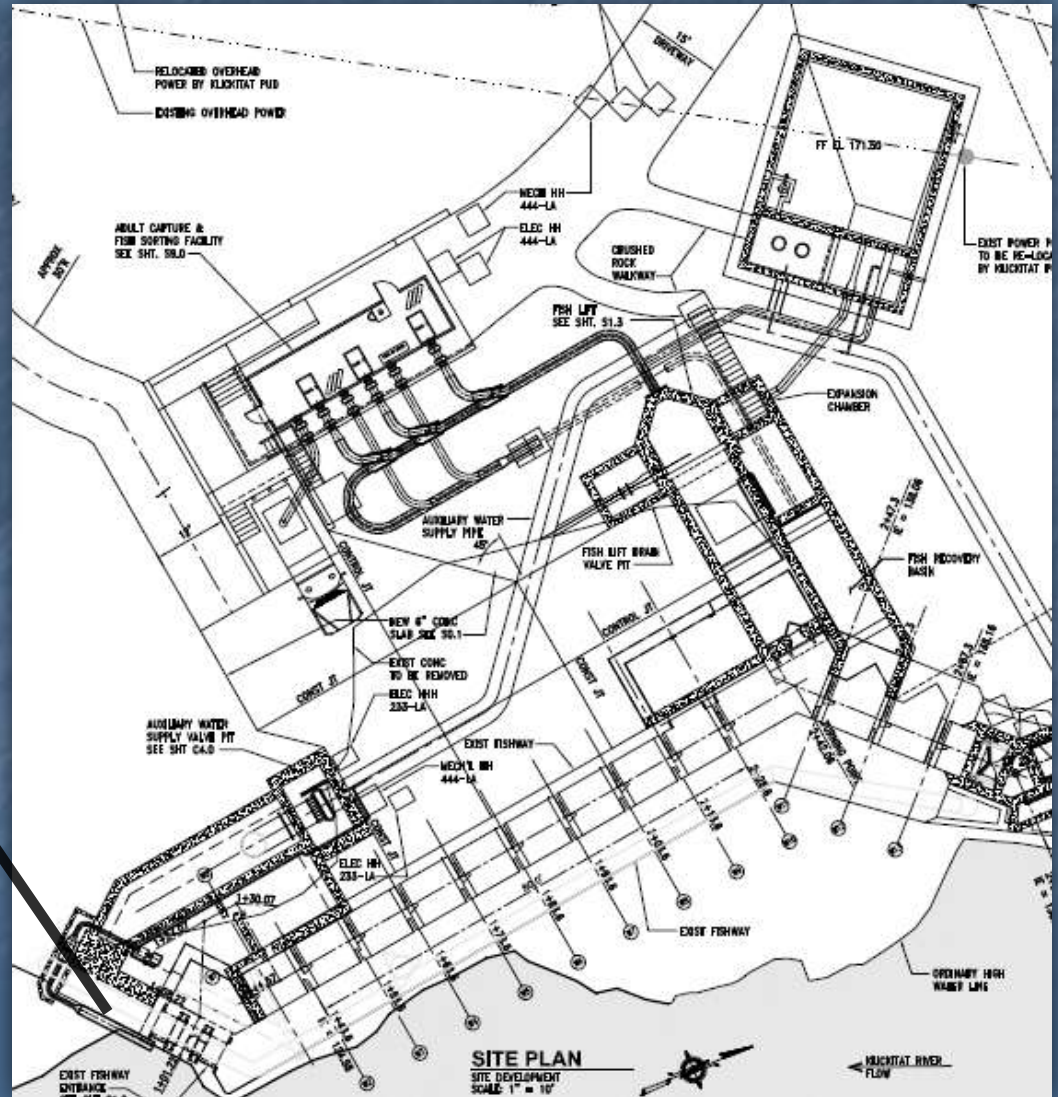
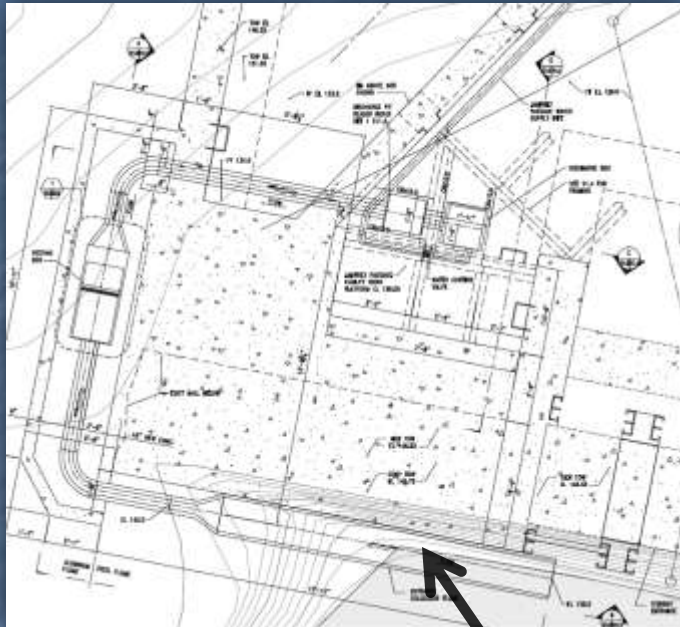
Fish Lift

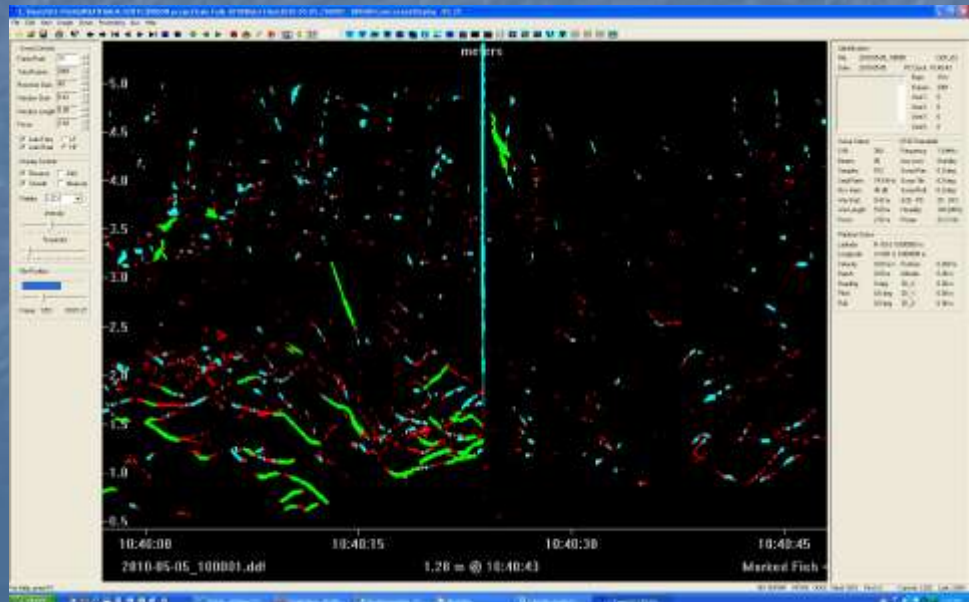


Equipment Control Building



Adult Work Up Facility & Eelway





Hatchery Br. & Access Road

Water transmission line

Emergency access

Facilitate hatchery expansion



Hatchery Br. & Access Road

- 165 ft. single span
- steel box girder
- 80 ton
- 300 ton capacity crane
- 30 highly skilled jobs





Phase II Planning Underway

30% Conceptual Design

Draft EIS

Klickitat River Anadromous Fisheries Master Plan

HGMPs



Klickitat Subbasin

Castile Falls (Rm 64.0)

Klickitat Hatchery
(Rm 43.0)

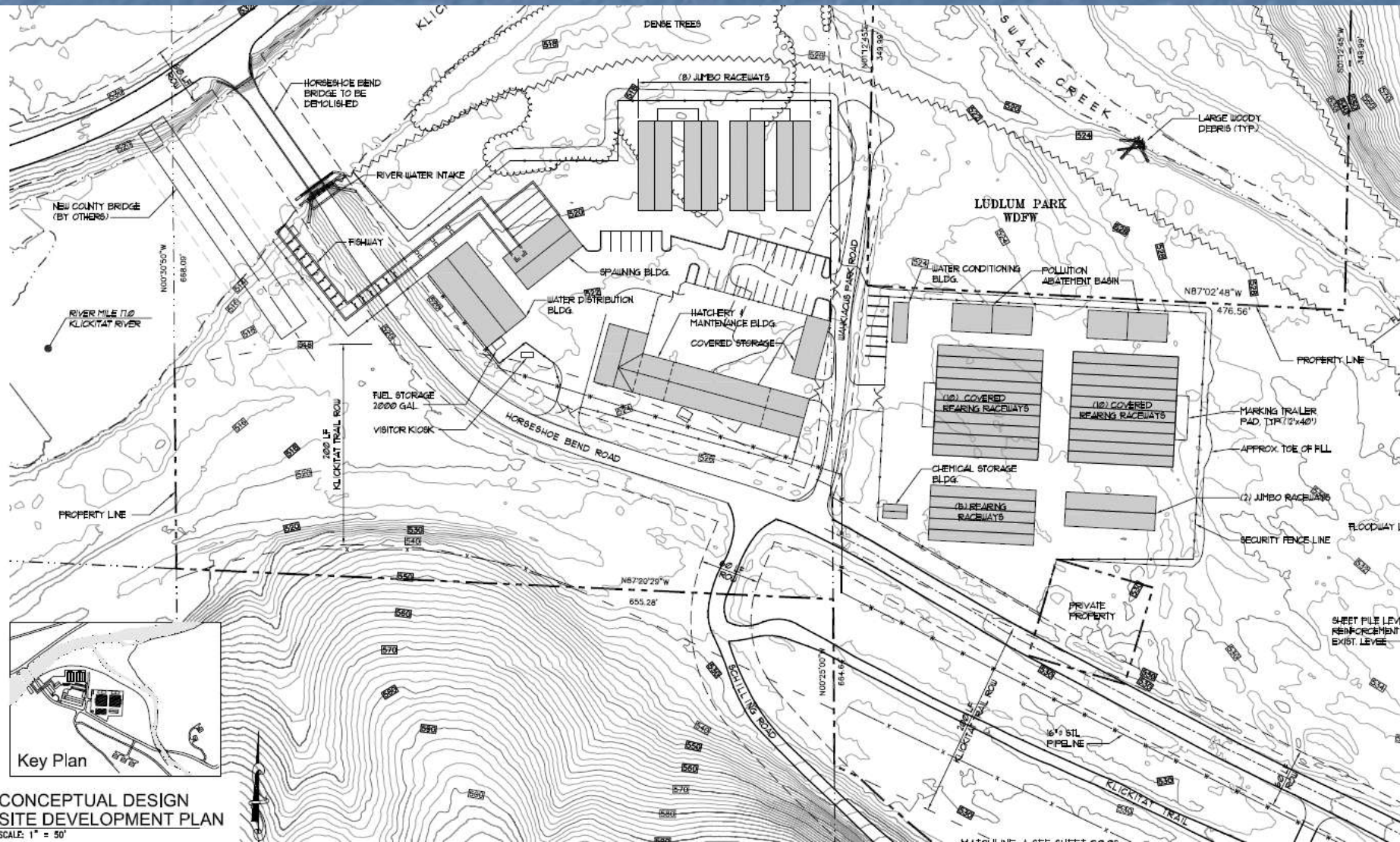
Wahkiacus Hatchery
(proposed) (Rm 17.0)

Lyle Falls Adult Trap
(Rm 2.2)

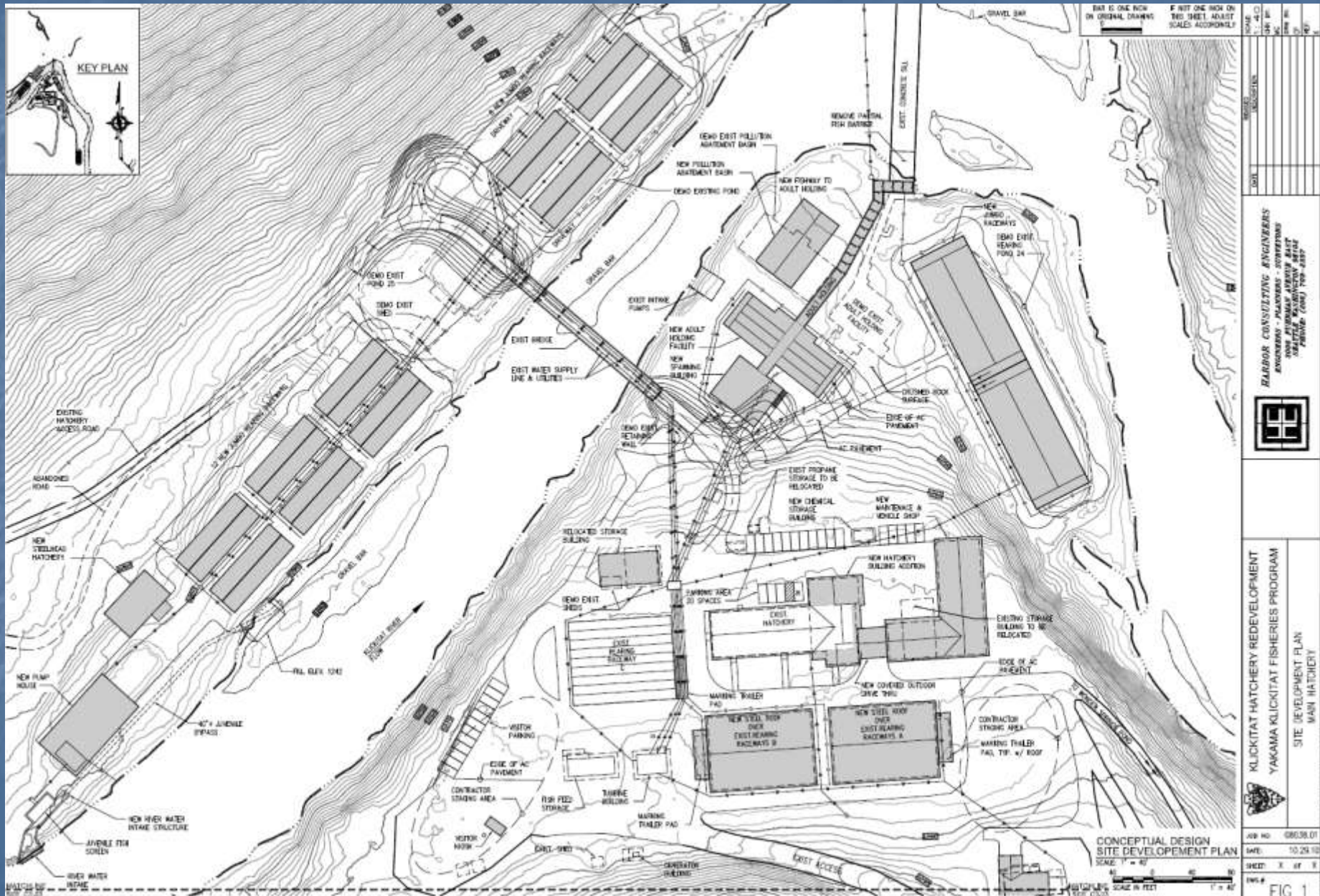


Wahkiacus Hatchery 30% Conceptual Design

Key to Hatchery Reform, "Free up" 26 miles of quality spawning/rearing habitat



Klickitat Hatchery 30% Conceptual Design



NO.	DATE	BY	CHKD	APP'D

HARBOR CONSULTING ENGINEERS
 ENGINEERS - PLANNERS - ARCHITECTS
 3000 FEDERAL AVENUE, SUITE 200
 SEASIDE, WASHINGTON 98138
 PHONE: (206) 760-6887



Klickitat Hatchery Redevelopment
 YAKAMA Klickitat Fisheries Program
 SITE DEVELOPMENT PLAN
 MAIN HATCHERY

PROJECT NO.	08038.01
DATE	10.24.10
SHEET	X OF 8
DATE	

FIG 1

Questions

ykfp.org/klickitat

Project Funding:

BPA

NOAA

Yakama Nation

