



Táp'ash (*n*) pine tree. (*Pinus*) — **Imítichnik táp'ashyaw ánichatak**

Columbia Gorge Fisheries and Watershed Science Conference

April 18, 2017

Laura Potash, Tapash Coordinator





Why is there a concern about forests in central Washington?

What events triggered the formation of Tapash?

Where is the Tapash landscape?

Our mission and how we are organized.

How we are accomplishing our goals.

Collaborating and collaboratives.



2015 Cougar Creek Fire - 55,000 Ac Yakama Reservation



©RyanSanchev



Photo courtesy
Yakama Nat

01/11

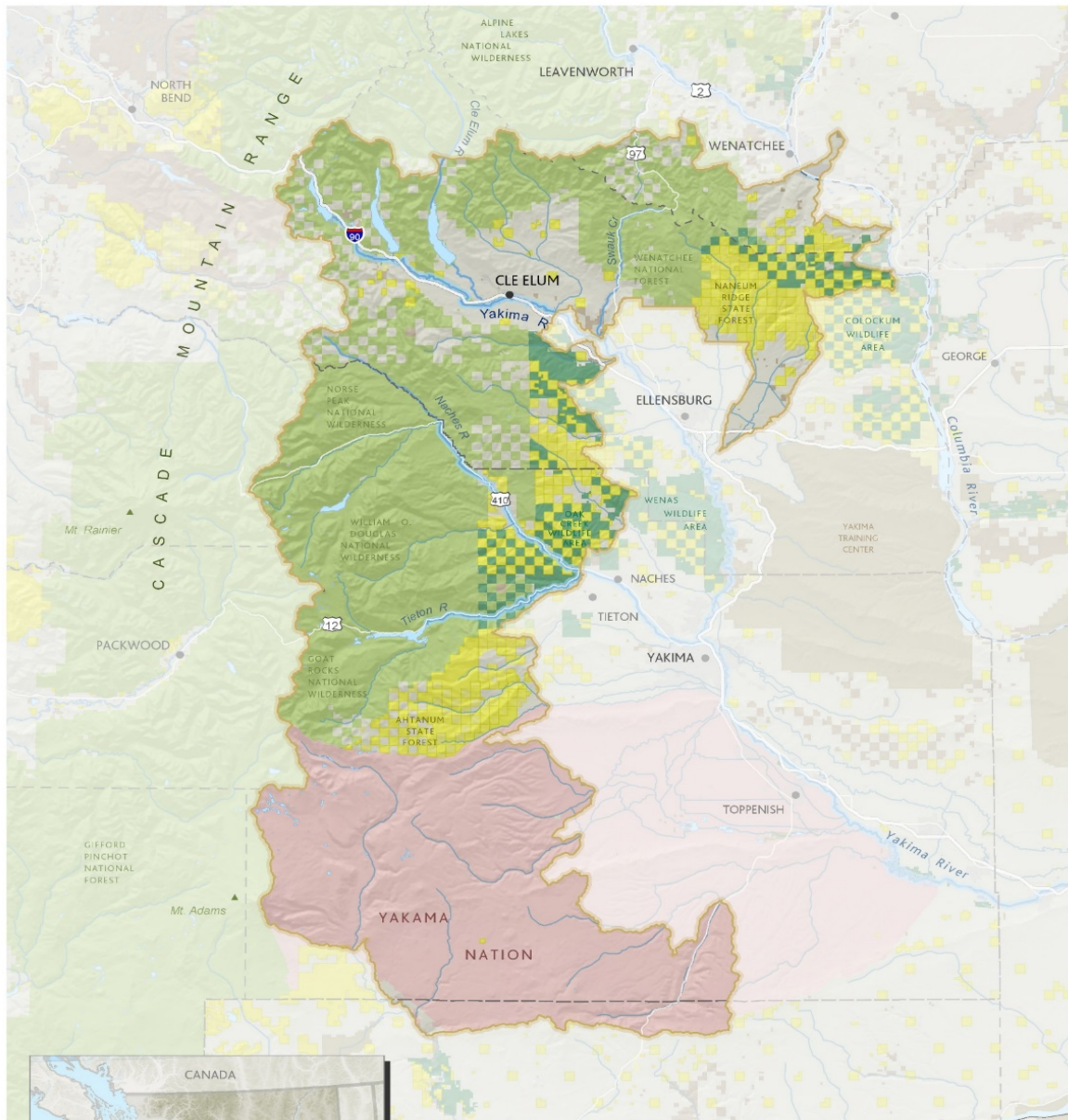
2003: TNC and Rocky Mountain Elk Foundation work together to purchase over **10,000 acres** in Tieton Canyon from Plum Creek Timber

2006: TNC collaborates with WDFW to transfer all but 640 acres to WDFW Oak Creek Wildlife Area.

2007: Tieton Conservation Action Plan (CAP) sessions lead to **memorandum of understanding** that facilitates land managers to work together across ownership boundaries

2007-2008: The Tieton Collaborative expands its scope to include the Yakama Nation and is renamed the **Tapash Sustainable Forest Collaborative**





K:\USA\Washington\EasternWashington\1\Maps\Tapash Sustainable Forest Collaborative_PressRelease_20101106_8.5x11.mxd

N
December, 2010
Map by: Erica Simek
The Nature Conservancy
Washington Chapter
1917 1st Avenue
Seattle, WA 98101
nature.org/washington

-  Tapash Sustainable Forest Collaborative Boundary
-  National Park, Forest, or Wilderness Area
-  WA Department of Fish and Wildlife
-  WA Department of Natural Resources
-  Tribal Land
-  Other Public or Protected Lands
- Other Private Land

A scenic view of a forested mountain landscape. The foreground is filled with tall, dark green coniferous trees. The middle ground shows a dense forest of smaller trees, and the background features rolling mountains under a clear blue sky. A semi-transparent dark grey box is overlaid on the center of the image, containing white text.

Tapash Sustainable Forest Collaborative
is working *“to improve ecosystem health and
natural functions of the landscape through
active restoration projects backed by the best
available science, community input, and
adaptive management”*



TAPASH STRATEGIC PLAN

Revised December 2016

WHO IS TAPASH

Tapash is a collaborative partnership comprised of five major landowners including the Yakama Nation, The Nature Conservancy, USDA Forest Service, Washington Department of Fish and Wildlife, and Washington State Department of Natural Resources, with a focus on a geographic landscape of nearly 3 million acres from Blewett Pass to Mount Adams in eastern Washington. The shared common goals of maintaining the forest and working together we can achieve more significant outcomes. Sahaptin (Yakama) word meaning "pine tree".



CURRENT Situation

We are losing our ability to maintain working forests.

- Catastrophic losses from insects/diseases

FISCAL YEAR 2017 TAPASH ANNUAL OPERATING PLAN

UPDATED SEPTEMBER 2016

TAPASH PRIORITY ON-THE-GROUND PROJECTS

On-the-ground priority projects in process for FY17 and the lead contact follows. Annual work-plans need to be created for each of these with measurable expected outcomes and timelines.

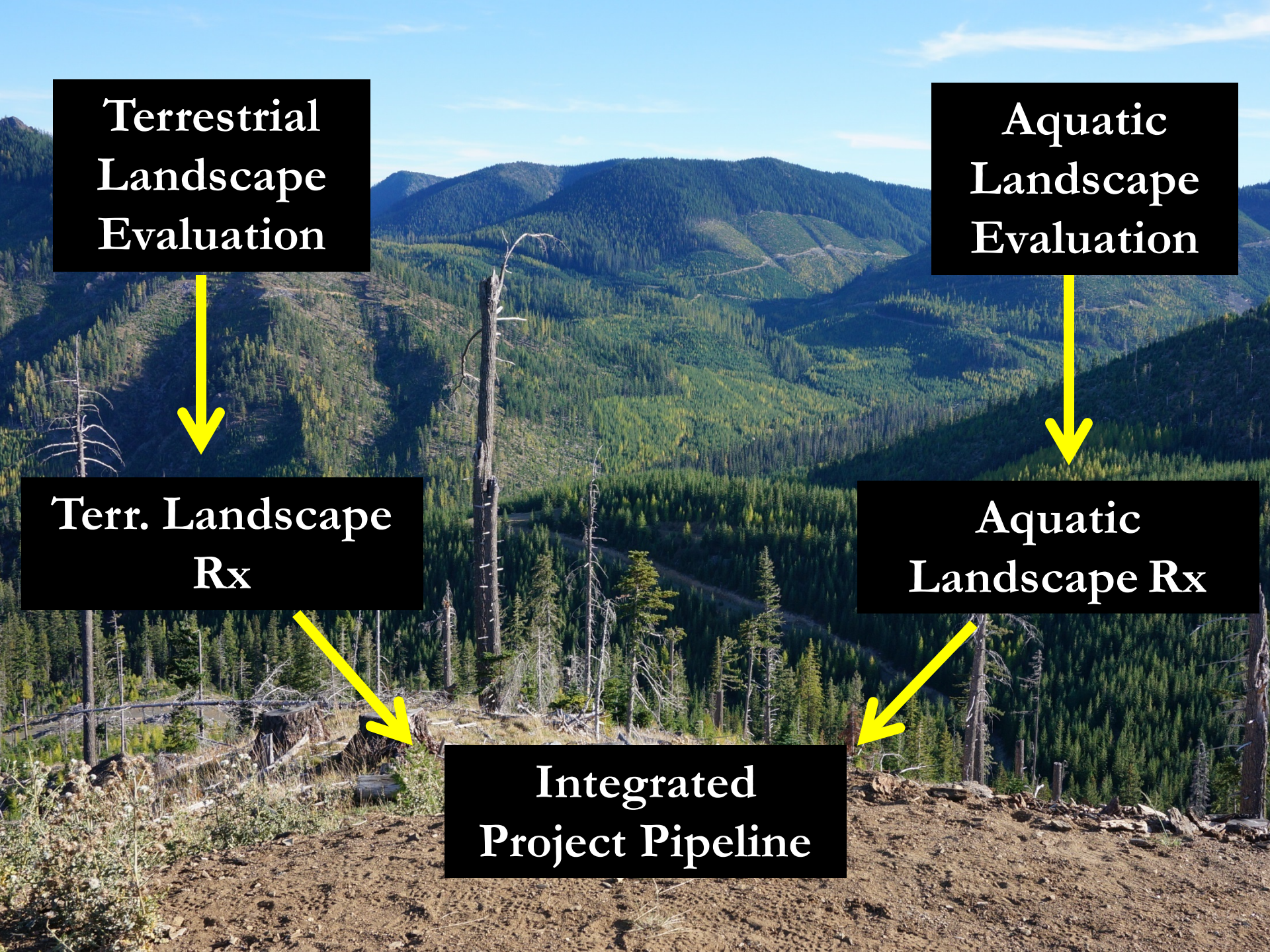
**Terrestrial
Landscape
Evaluation**

**Aquatic
Landscape
Evaluation**

**Terr. Landscape
Rx**

**Aquatic
Landscape Rx**

**Integrated
Project Pipeline**





08/30/2012



Fuel Reduction Thinning Results. Before (left) and after (right) fuel reduction thinning.
Eastern Washington Forest Health: Hazards, Accomplishments and Restoration Strategy. A Report to the Washington State Legislature. October 2014

In the Spring of 2016, the Washington State Legislature passed [House Bill 2928](#), the Forest Resiliency Burning Pilot project.

See 2016 Burn Sites

THE PILOT

**PUTTING
FIRE
TO WORK**



Prescribed fire is professional fire — don't try it at home





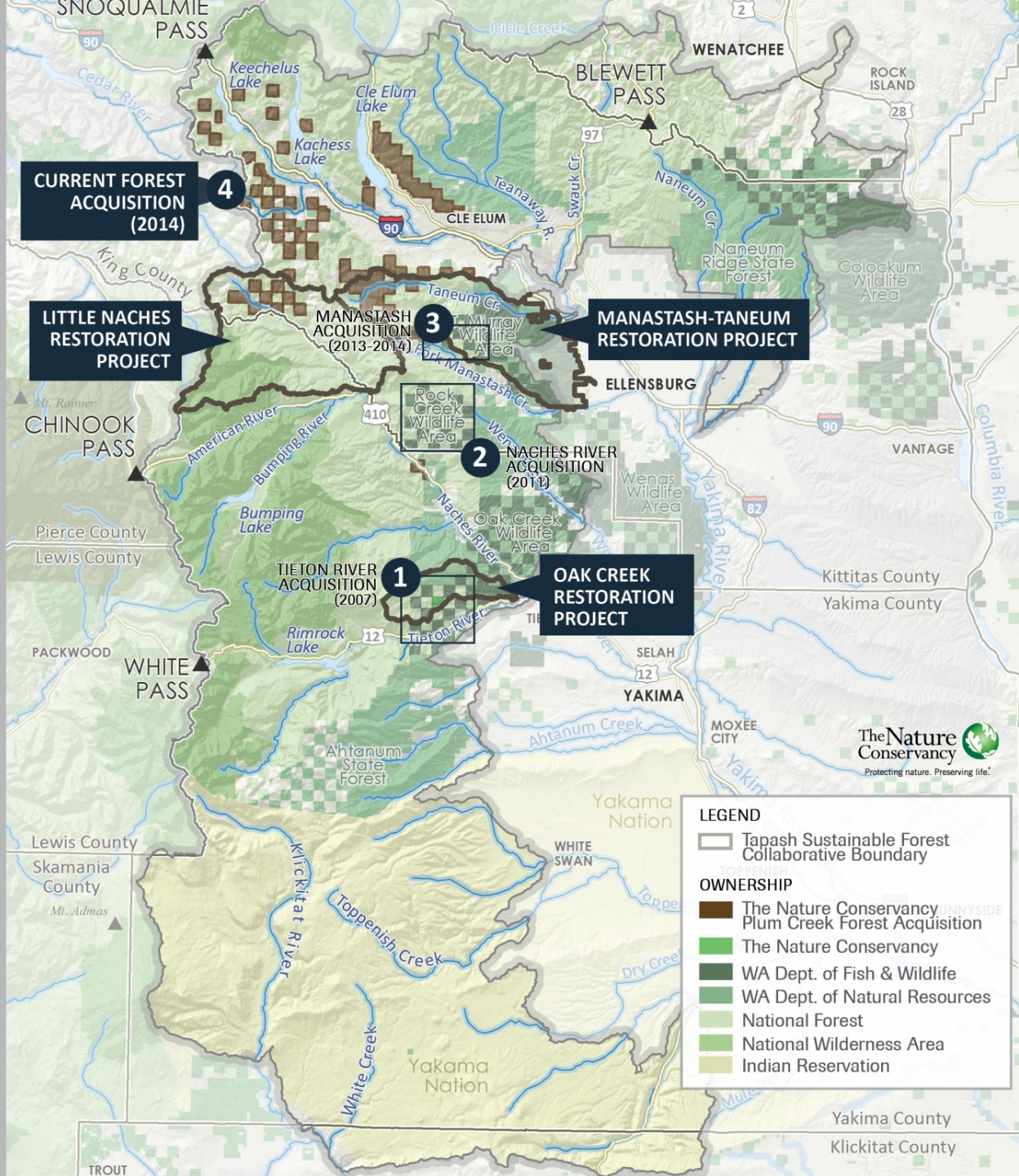
09.13.2010 08:5



09.13.2010 15:41

Same site, after a ~100
year flood.

05.04.2012 15:59



CURRENT FOREST ACQUISITION (2014)

LITTLE NACHES RESTORATION PROJECT

MANASTASH ACQUISITION (2013-2014)

MANASTASH-TANEUM RESTORATION PROJECT

NACHES RIVER ACQUISITION (2011)

OAK CREEK RESTORATION PROJECT

TIETON RIVER ACQUISITION (2007)

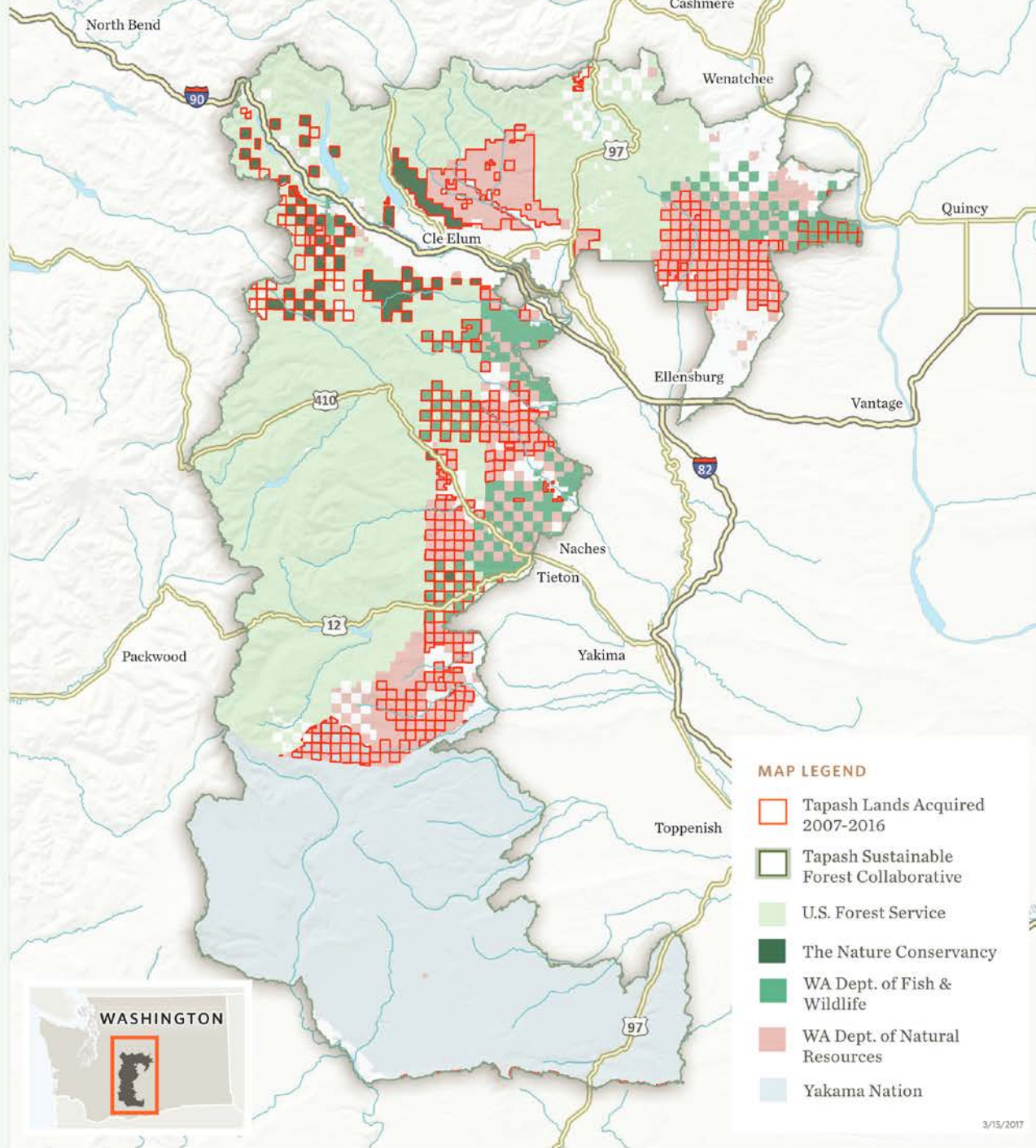
LEGEND

- Tappan Sustainable Forest Collaborative Boundary

OWNERSHIP

- The Nature Conservancy Plum Creek Forest Acquisition
- The Nature Conservancy
- WA Dept. of Fish & Wildlife
- WA Dept. of Natural Resources
- National Forest
- National Wilderness Area
- Indian Reservation





MAP LEGEND

-  Tapash Lands Acquired 2007-2016
-  Tapash Sustainable Forest Collaborative
-  U.S. Forest Service
-  The Nature Conservancy
-  WA Dept. of Fish & Wildlife
-  WA Dept. of Natural Resources
-  Yakama Nation



Outcomes

- **Increased connectivity**
- **Better linkage**
- **Quicker response**
- **Coordinated enhancement efforts**
- **More cost effective**
- **Consistent management**

Support “Working Forests” which will assure the protection of infrastructure



Washington State Forest Collaboratives



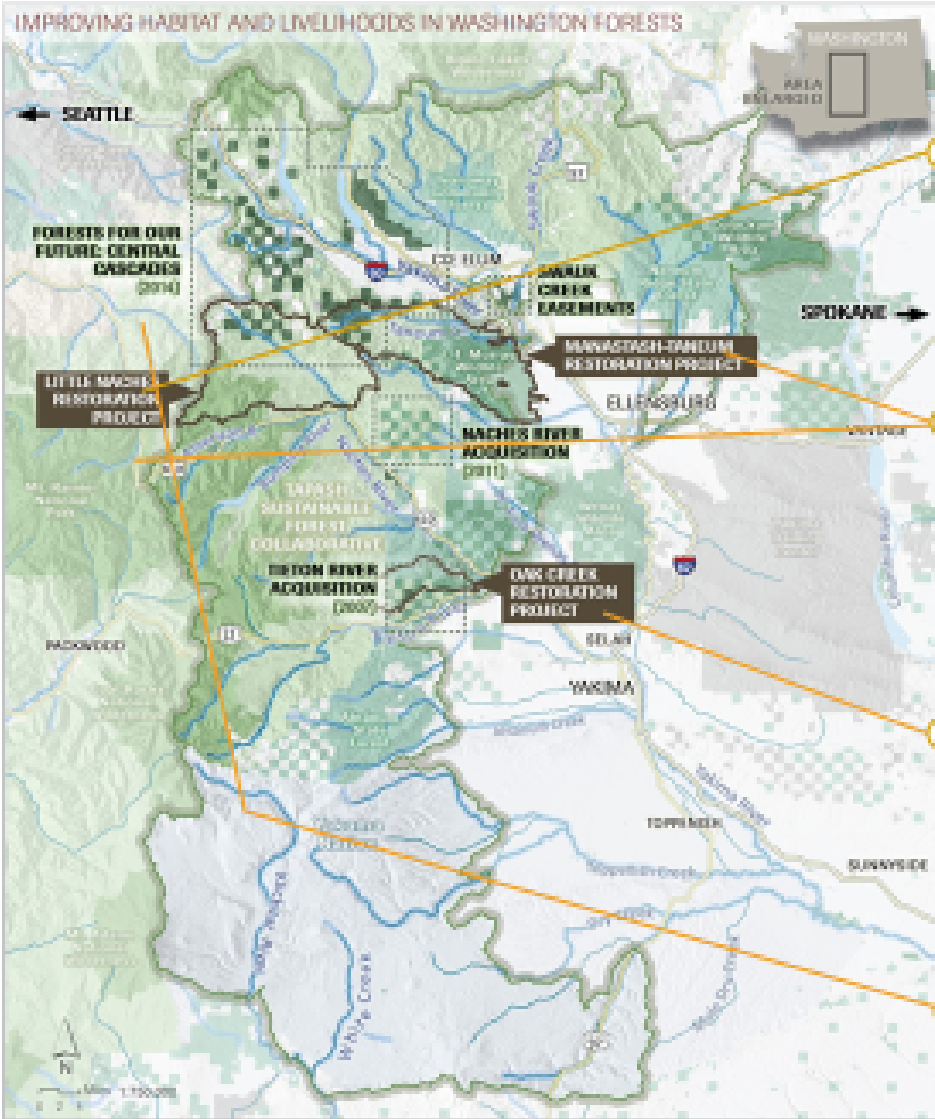
- Tapash Sustainable Forest Collaborative
- Northeast Washington Forestry Collaborative
- North Central Washington Forest Health Collaborative
- Chumstick Wildfire Stewardship Coalition
- Pinchot Partners
- South Gifford Pinchot
- Darrington Forest Collaborative
- Olympic Forest Collaborative



Tapash Landscape

Building Capacity Through Collaboration

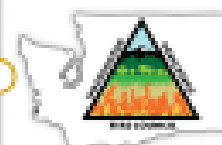
TAPASH FOREST COLLABORATIVE



YBFWRB adding planning capacity through hydrologic assessment



TNC and CNW supporting Landscape Evaluation and Photo Interpretation in Manastash-Taneum and Little Naches landscapes

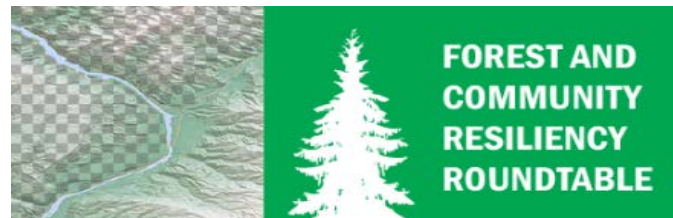
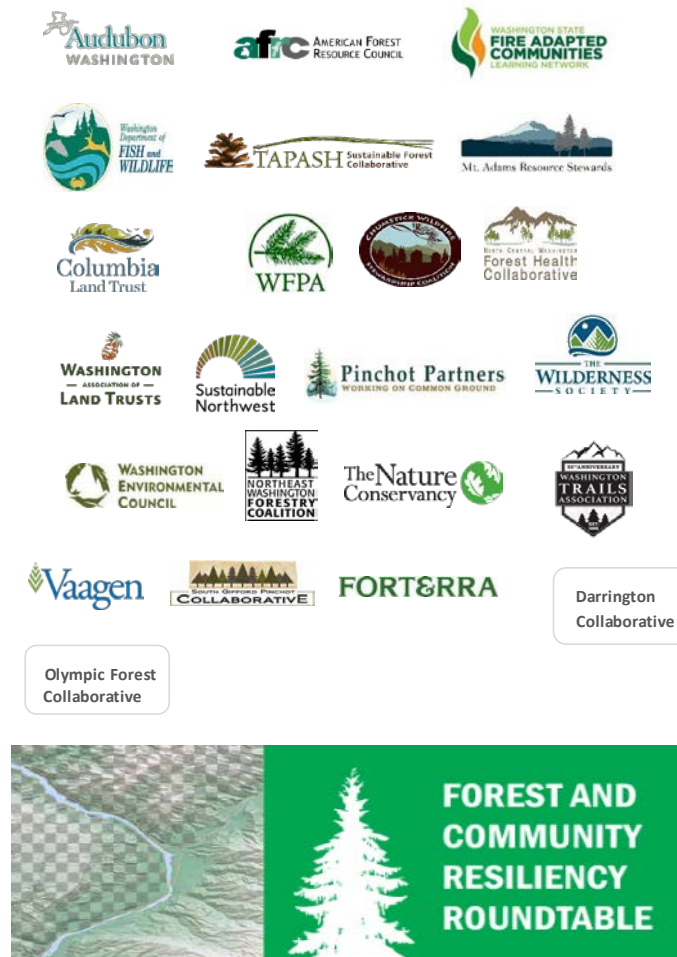


WA Rx Fire Council working with WDFW to plan for a successful Rx burn across state and federal lands in Oak Creek



Tapash Collaborative increasing pace and scale of restoration through strategic land acquisition and exchanges on historically checkerboarded landscape

The **Forest and Community Roundtable** is a diverse group of stakeholders and governments who have come together to advocate for investment in locally driven large landscape forest restoration and community preparedness projects that further our shared goals for improving the resilience of Washington's communities and forests



Roundtable Capital Budget Priorities

How can Tapash
stakeholders
help?

\$25M – Department of Natural Resources

Forest Treatment & Ecosystem Health

- Capacity for forest health collaborative coordinators -
Senate recently approved \$500K –Good News!
- Prescribed burns on state trust lands
- Veterans/Youth Corps FireWise work

Large Landscape Cross Boundary Grant Program

Senate recently approved 2.5 m - Good News!

Reach out to legislators about Tapash's support of budget requests

Add your organization as a supporter of the roundtable



TAPASH Sustainable Forest Collaborative



Protecting our
People, Places, Communities

