

# 2012 Redd Mapping and Fall Chinook Salmon Escapement Estimates One Year Post-Breach and Dam Removal



Rod Engle

Columbia River Fisheries Program Office  
Vancouver, WA



U.S. Fish and Wildlife Service

Columbia River Fisheries Program Office

Conserving America's Fisheries



# Objectives

- Collect data for gap in annual White Salmon adult escapement estimates usually collected by WDFW and PSMFC staff.
- Identify (map) and estimate the total number of lower Columbia River (LCR or Tule) and bright fall Chinook salmon in the White Salmon River.



## Two stocks of fall Chinook salmon in White Salmon River

- LCR fall Chinook spawn in September and early October (ESA-listed)
- Bright fall Chinook spawn mainly in November (not ESA-listed)



U.S. Fish and Wildlife Service

Columbia River Fisheries Program Office

Conserving America's Fisheries

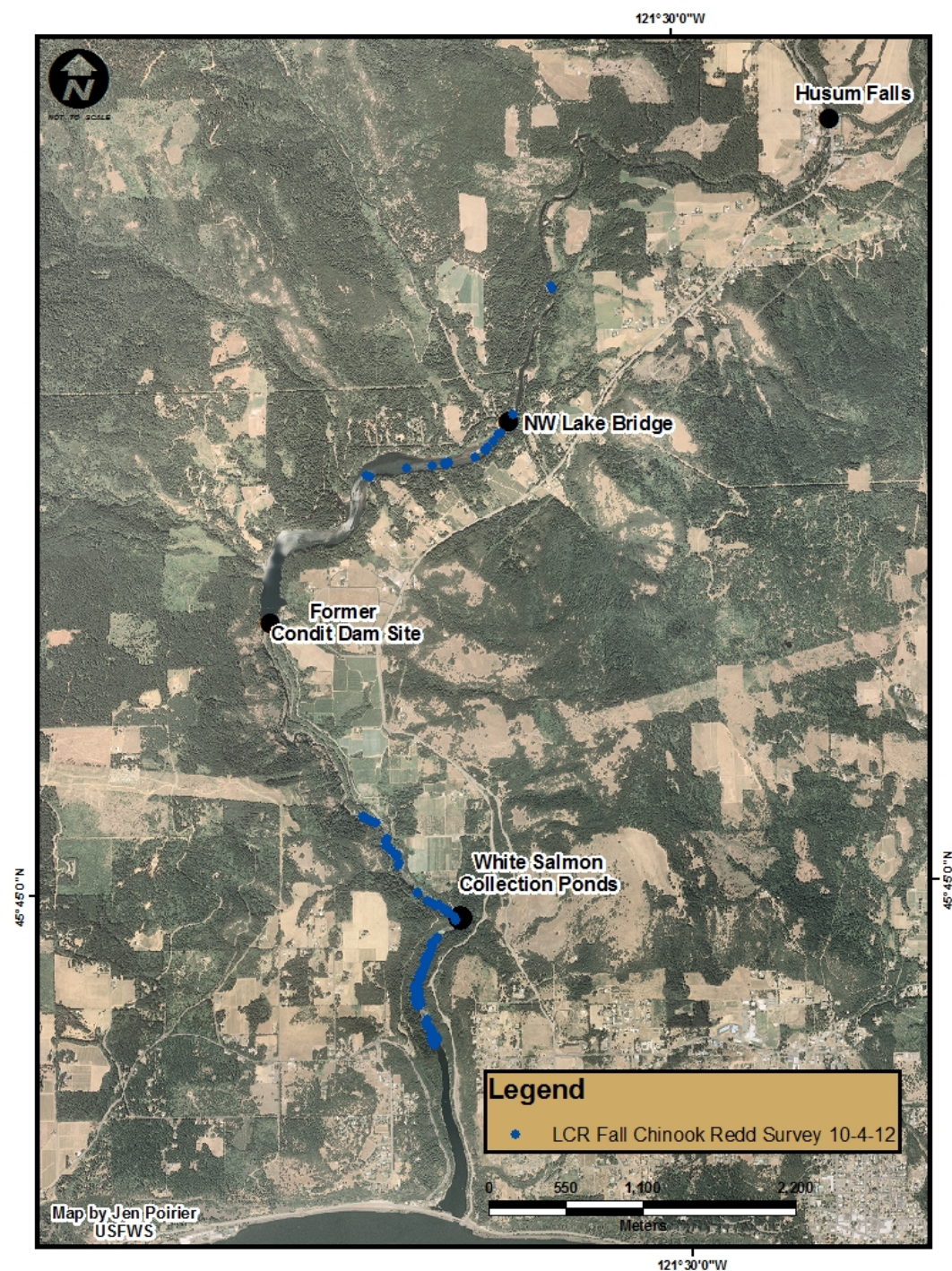


Conserving America's Fisheries

# Results

## LCR or Tule Fall Chinook

- Spawning did occur both upstream and downstream of Condit Dam site.
- Total number of carcasses recovered for LCR fall Chinook was 118.
- 93% of carcasses recovered were natural origin based on presence of an adipose fin.
- Escapement estimate was 755 adults for 2012.



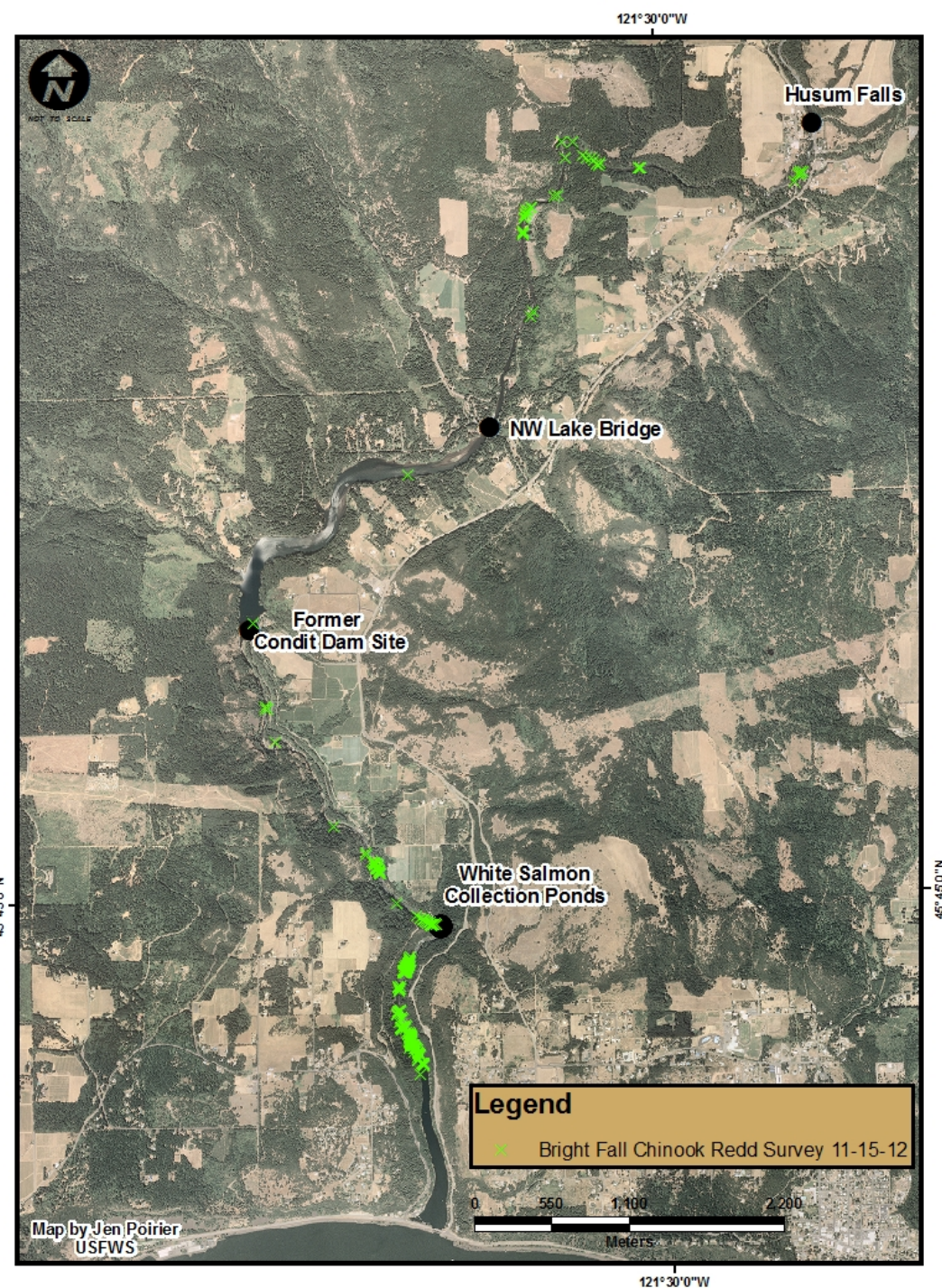
# Results Cont'd

## Bright Fall Chinook

- Spawning did occur both upstream and downstream of Condit Dam site.
- Total number of carcasses recovered for LCR fall Chinook was 97.
- 70% of carcasses recovered were natural origin based on presence of an adipose fin.
  - Unlike tules, not all hatchery bright fall Chinook salmon are adipose fin clipped in Gorge and for Columbia Basin programs.
- Escapement estimate was 1,061 adults for 2012.



U.S. Fish and Wildlife Service  
Columbia River Fisheries Program



# Discussion

- Spawners upstream and downstream of Condit Dam 2012.....first year after dam breach!
- Concerns still exist between bright and tule fall Chinook salmon redd superimposition
  - As both tules and bright fall Chinook spread into newly available habitat, perhaps those impacts dissipate.
- Additional species of interest detected upstream of Condit Dam.
  - Bull Trout capture by angler on August 20<sup>th</sup>, 2011
  - On September 20<sup>th</sup> 2012, spring Chinook salmon redd observed at RM 10.4 based on size, timing and location of redd.
- Working with White Salmon Working Group parties continuing mapping and surveys in '13.
- Thanks to Yakama Nation, WDFW, PacifiCorp, JR Merit and Wet Planet Whitewater for assistance in 2012!
- FINAL REPORT FOR 2011 and 2012 AT



<http://www.fws.gov/columbiariver/publications.html>

Or email Rod at [rod\\_engle@fws.gov](mailto:rod_engle@fws.gov) for an e-copy



U.S. Fish and Wildlife Service

Columbia River Fisheries Program Office

CONSERVING AMERICA'S Fisheries

Conserving America's Fisheries

