

Hood River/White Salmon Interstate Bridge Status Update

2018 COLUMBIA GORGE FISHERIES AND
WATERSHED SCIENCE CONFERENCE

APRIL 17, 2018

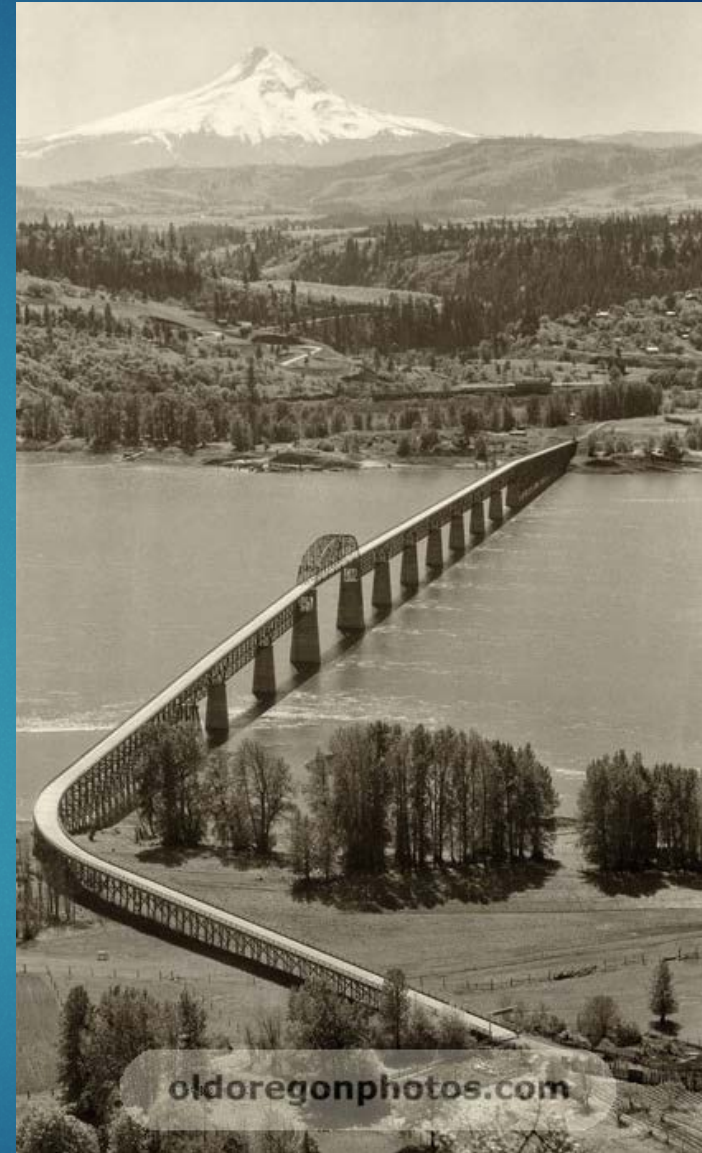
KEVIN GREENWOOD, PROJECT DIRECTOR



- 
- ▶ History
 - ▶ Threats
 - ▶ Bridge replacement efforts
 - ▶ Opportunities
 - ▶ Questions

History

- ▶ 1924: Bridge opened
- ▶ 1937: Bonneville Dam
- ▶ 1938: Lift Span Installed & Major Reconstruction
- ▶ 1950: Port Purchases for \$800K
- ▶ 1951: \$725K Upgrade



www.oldoregonphotos.com

Threats

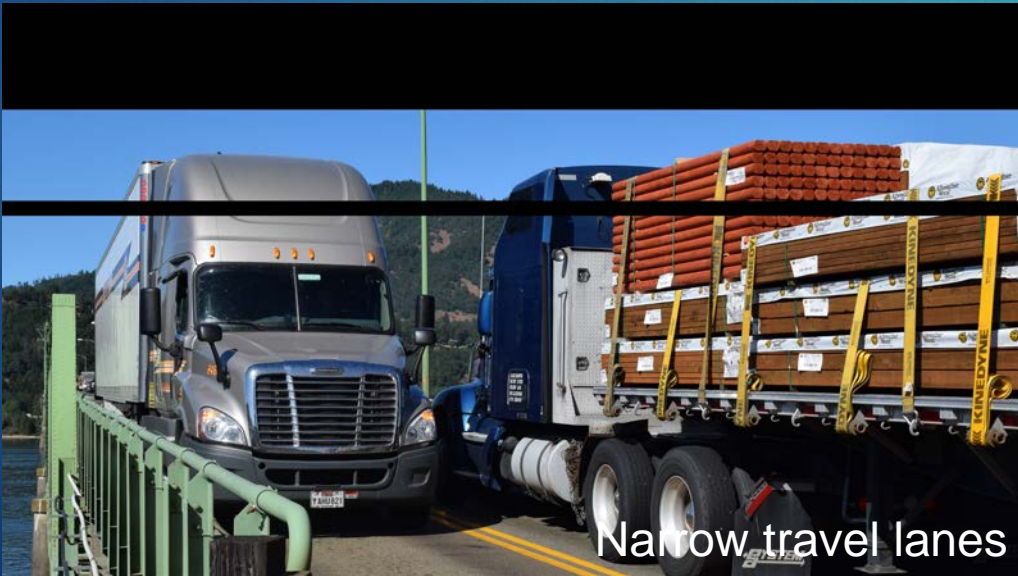
Sub-standard horizontal clearance



Steel grated deck



michael peterson photography



Narrow travel lanes



Pack rust

Bridge Replacement

Timeline of progress made to date

- 1999:
 - Scoping for feasibility study
- 2003:
 - NEPA scoping complete
 - Feasibility study complete
 - Draft Environmental Impact Statement (DEIS) complete
- 2012:
 - Type, Size and Location study complete
- 2015:
 - FAST Act amendment designates projects within National Scenic Areas as expressly eligible for program funding
 - Bridge designated National Highway System facility
 - Bridge designated Critical Rural Freight Network facility in Washington
- 2016
 - Project Benefit/Cost Analysis complete
- 2017:
 - HB2750 and HB2017 clarifies Port's statutory authorities and provides \$5 million in funding for pre-development tasks (FEIS)

Opportunities

Type, Size, and Location Study, Oct. 2011





Questions?

MORE INFO AT:

PORTOFHOODRIVER.COM

FACEBOOK.COM/PORTOFHOODRIVER

TWITTER: [@PORTOFHOODRIVER](https://twitter.com/PORTOFHOODRIVER)

KGREENWOOD@PORTOFHOODRIVER.COM