

Glacier Changes of Mount Adams 1905 - 2008

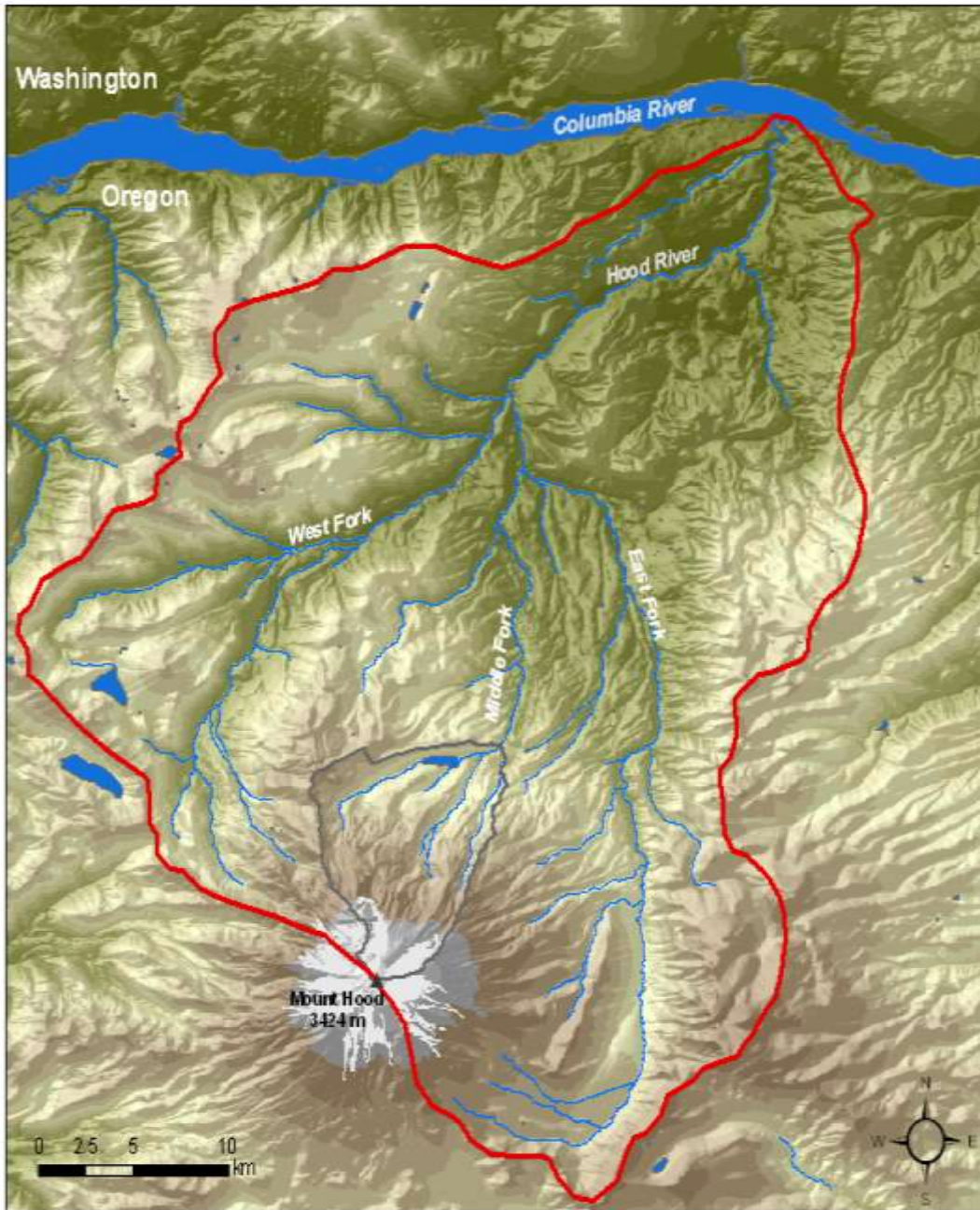
Andrew G. Fountain
Portland State University



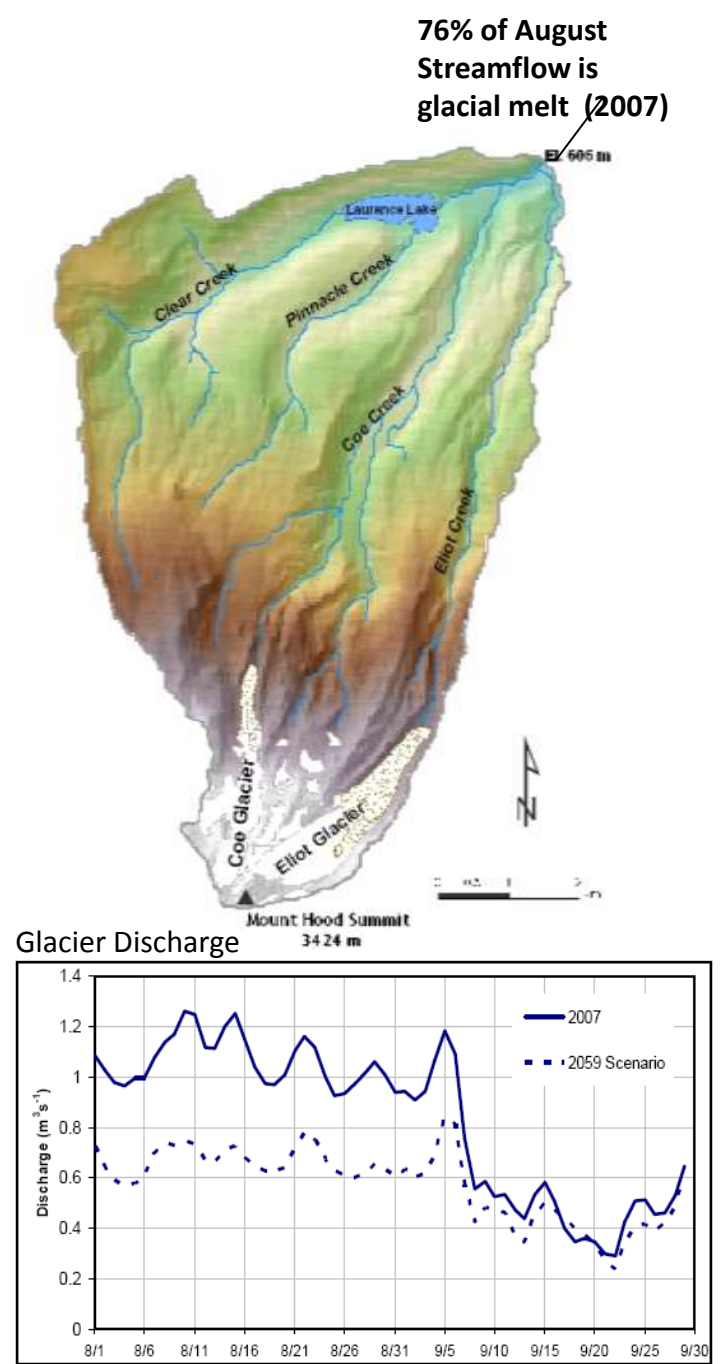
High Alpine Hydrology



Colorado Front Range
Robert Stallard, USGS



Phillippe, 2008



31% less melt water-----25% less streamflow

Geologic Hazards

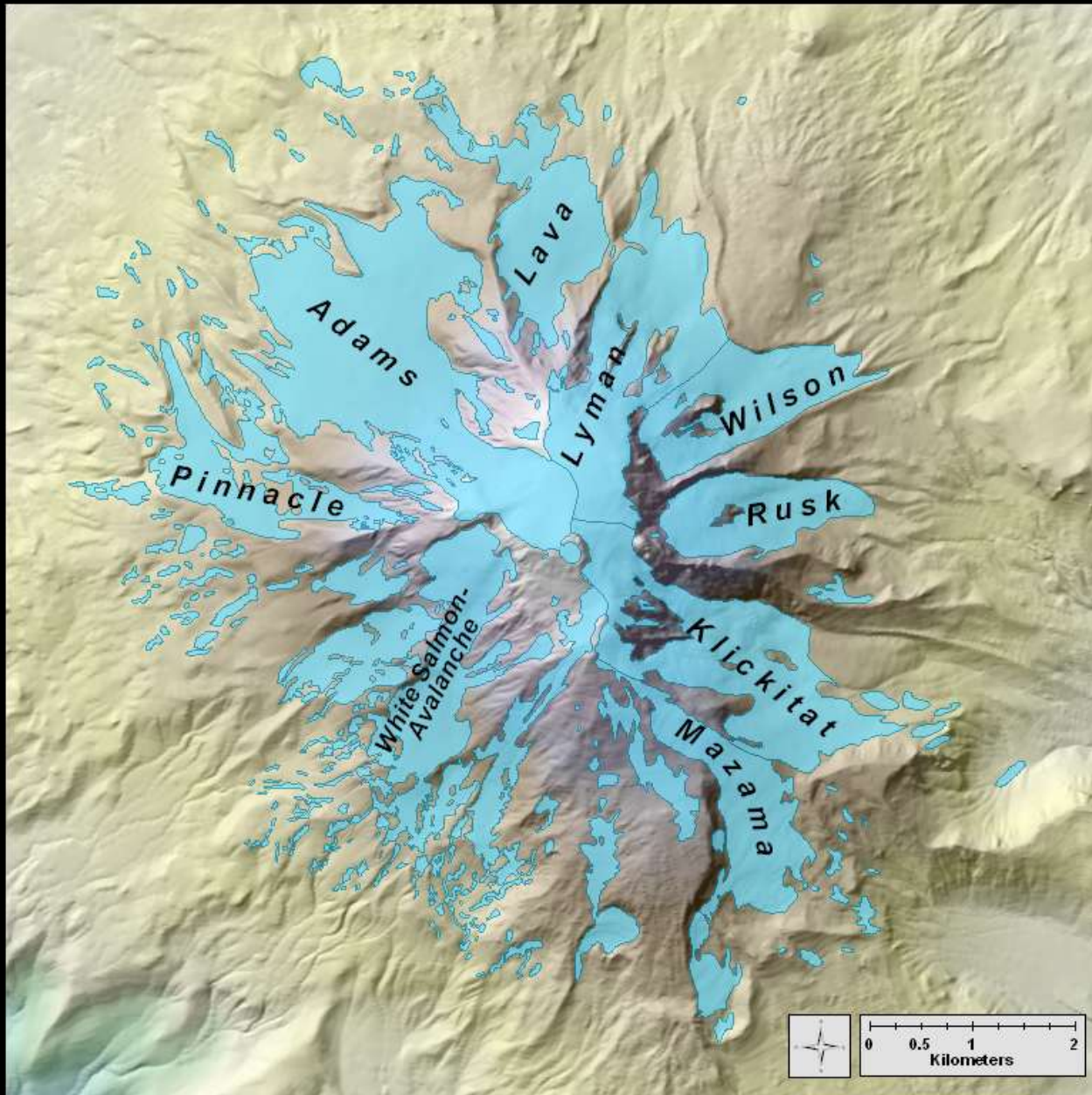
debris flows

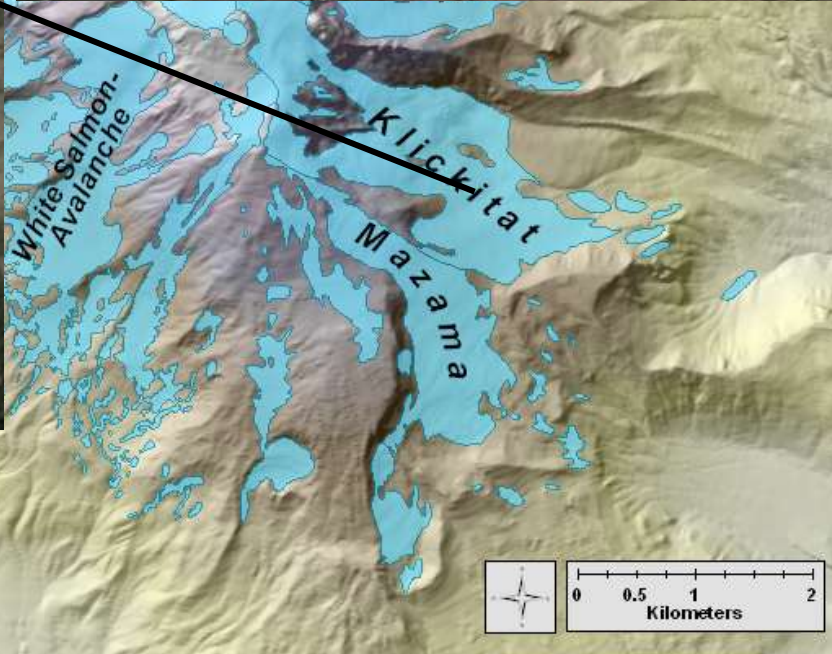
outburst floods



Oregon Highway 35, Nov 7, 2006

Doug Jones







1936

A.J. Gilardi, Mazamas

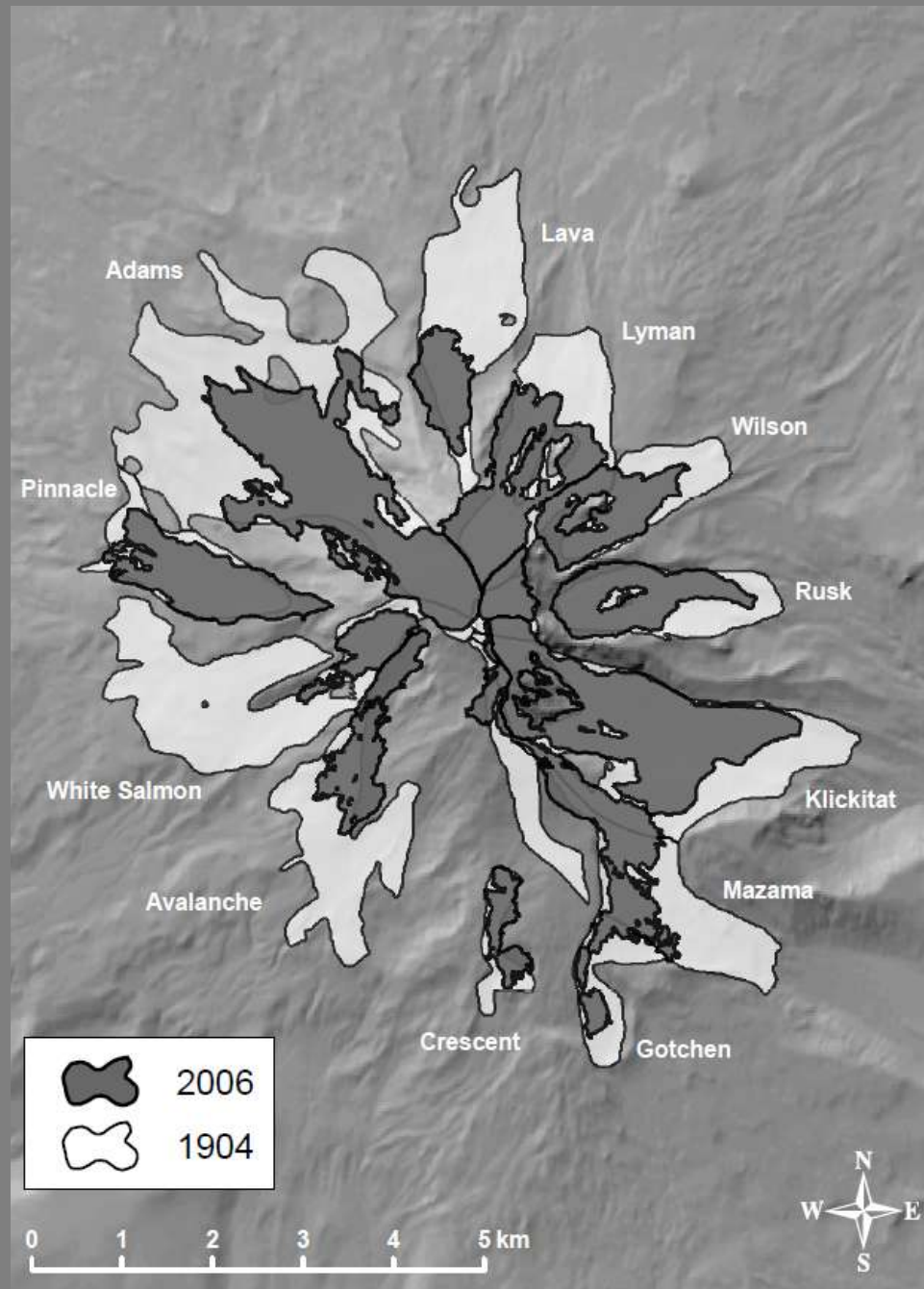


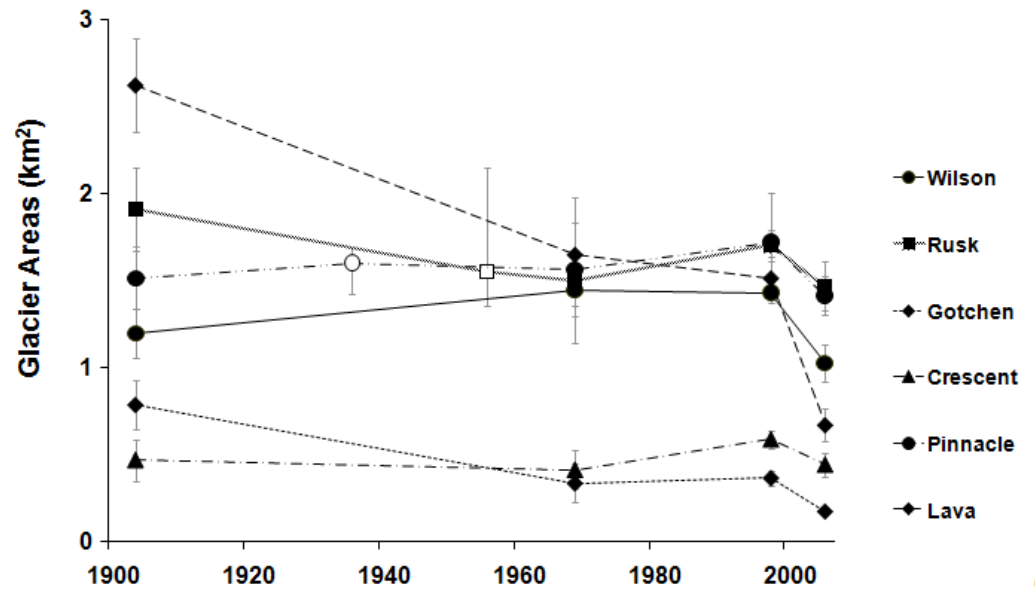
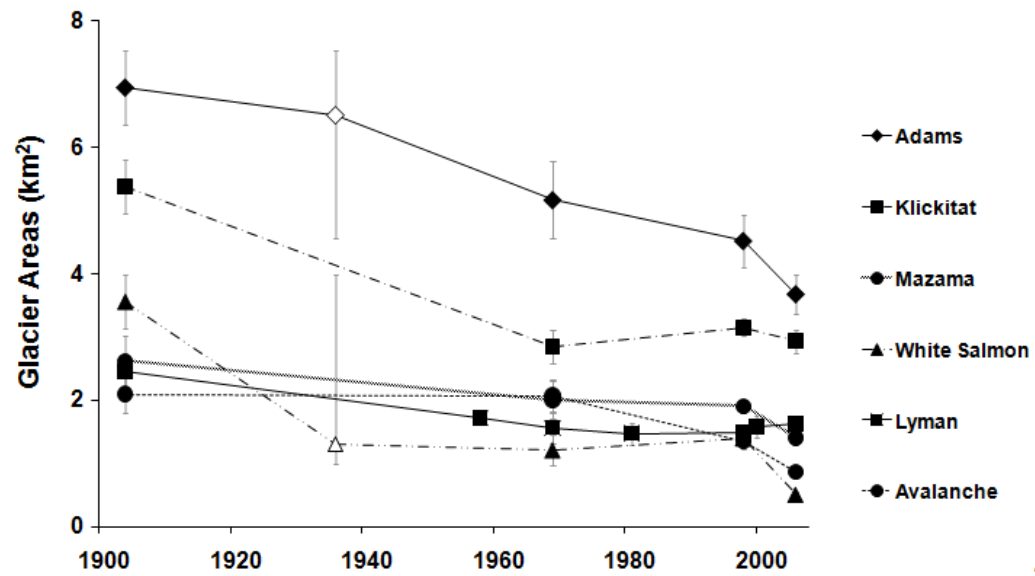
2007

John Scurlock



-49%
31 to 16 km²





Mount Hood



Photo: Frank Granshaw, 2001

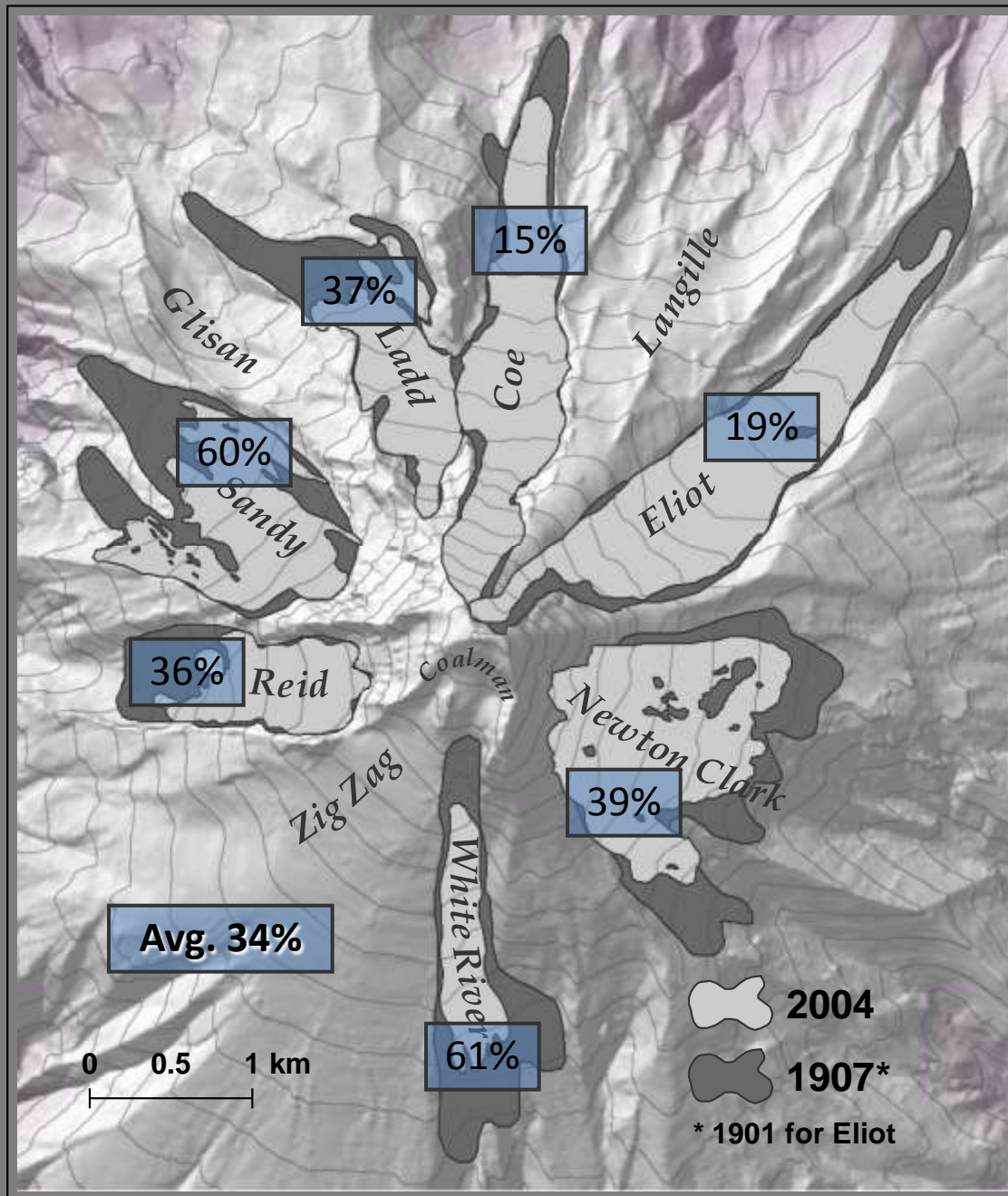
Newton Clark Glacier

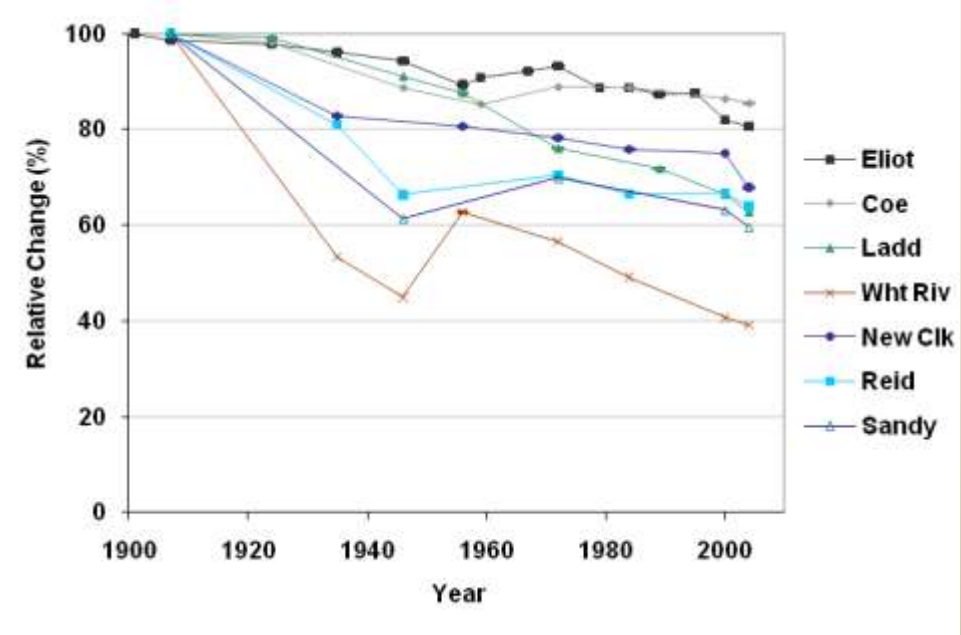
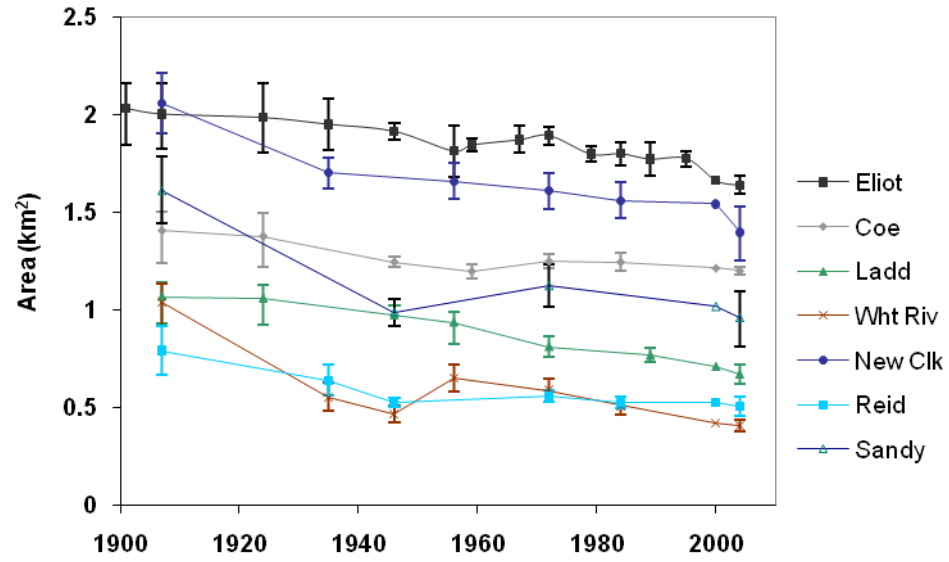
1901 (H.F. Reid)



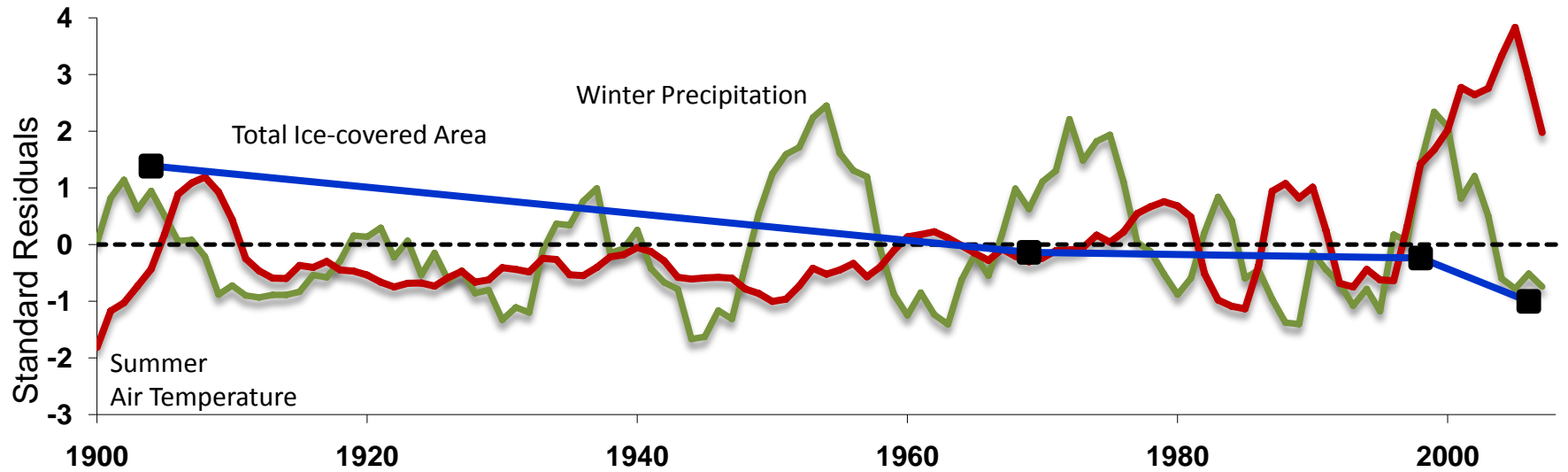
2000 (Federal Hwy.
Administration)



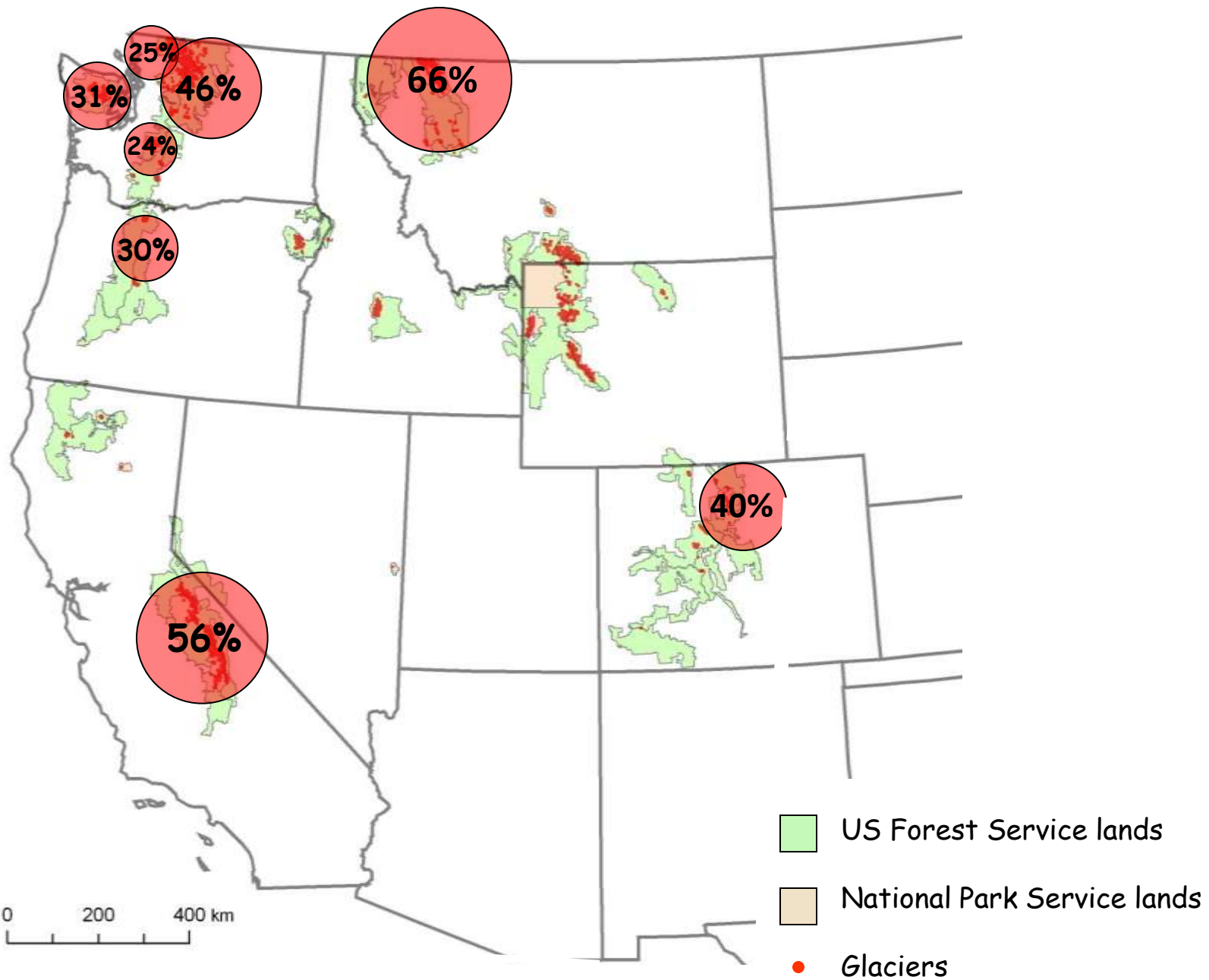




Mount Adams: Decrease in Ice-covered Area



Fraction of Glacier Area Lost since 1900



Questions?



White Salmon –
Avalanche Glacier