

Yakima/Klickitat Fisheries Project

Management, Data and Habitat

Annual Report 2005 - 2006

August 2006

DOE/BP-00022554-1



This Document should be cited as follows:

Sampson, Melvin, "Yakima/Klickitat Fisheries Project; Management, Data and Habitat", 2005-2006 Annual Report, Project No. 198812025, 104 electronic pages, (BPA Report DOE/BP-00022554-1)

Bonneville Power Administration
P.O. Box 3621
Portland, OR 97208

This report was funded by the Bonneville Power Administration (BPA), U.S. Department of Energy, as part of BPA's program to protect, mitigate, and enhance fish and wildlife affected by the development and operation of hydroelectric facilities on the Columbia River and its tributaries. The views in this report are the author's and do not necessarily represent the views of BPA.

Management, Data and Habitat

Project # 1988-120-25

Contract # 22554

Final Report

May 1, 2005 – April 30, 2006

The Confederated Tribes and Bands of

The Yakama Nation

Prepared For:

BPA

Bonneville Power Administration

Portland, Oregon

Submitted on behalf of all Project Personnel

By:

**Melvin R. Sampson
Project Analyst/Project Coordinator
Yakama Nation
P.O. Box 151
Toppenish, WA 98948**

YAKIMA/KLICKITAT FISHERIES PROJECT MANAGEMENT AND OVERSIGHT.....	4
OBJECTIVE 1. YAKIMA/KLICKITAT PROJECT MANAGEMENT AND OVERSIGHT	5
WORK ELEMENTS PROJECT MANAGEMENT & OVERSIGHT	5
OBJECTIVE 2. POLICY AND PLANNING	5
WORK ELEMENTS POLICY & PLANNING	6
OBJECTIVE 3. PROVIDE PROJECT FINANCIAL AND ADMINISTRATIVE SUPPORT	6
WORK ELEMENTS FINANCIAL & ADMINISTRATIVE SUPPORT	7
SUMMARY OF YAKIMA/KLICKITAT FISHERIES PROJECT MANAGEMENT AND OVERSIGHT.7	7
OBJECTIVE 4. DATA PROCESSING AND INFORMATION	8
WORK ELEMENTS DATA AND INFORMATION	9
OBJECTIVE 5. PROJECT ANNUAL REVIEW (PAR)/QUARTERLY AND ANNUAL REPORTS	14
WORK ELEMENTS PAR, QUARTERLY & ANNUAL REPORTS.....	14
OBJECTIVE 6. SCIENTIFIC OVERSIGHT BY SCIENCE TECHNICAL ADVISORY COMMITTEE (STAC).....	15
WORK ELEMENTS STAC.....	15
OBJECTIVE 7. HABITAT, WATER AND PASSAGE	15
WORK ELEMENTS HABITAT, WATER AND PASSAGE	16
SUMMARY OF YAKIMA/KLICKITAT FISHERIES PROJECT HABITAT.....	16
OBJECTIVE 8. SUB-CONTRACTS FOR NEEDED SERVICES.....	17
WORK ELEMENTS SUB-CONTRACTS	18
TABLE 2. LIST BY NUMBER OF PROJECT PERSONNEL/TITLE/RESPONSIBILITIES UNDER THIS CONTRACT.....	18
TABLE 3. PERCENT AND STATUS OF COMPLETION FOR THE OBJECTIVES/TASKS.....	21
INFORMATION SYSTEM MANAGEMENT PLAN	24
LEGAL/POLICY ANALYST CONTRACT ACTIVITIES.....	50
TECHNICAL WRITER – JUDITH WOODWARD	53
YKFP ORGANIZATIONAL CHART.....	54
POLICY GROUP MINUTES.....	56
MAY 31, 2005	56
JUNE 2005	60
JULY 2005	64
AUGUST 2005.....	70
SEPTEMBER 2005 - NO MEETING	76
OCTOBER 2005	76
NOVEMBER 2006.....	80
DECEMBER 2005	85
JANUARY 2006	88
FEBRUARY 2006.....	92
MARCH 2006 – NO MEETING.....	97
APRIL 2006	97

INTRODUCTION

The Yakima/Klickitat Fisheries Project (YKFP or Project) continues to be an all stock initiative that is responding to the need for scientific knowledge for rebuilding and maintaining naturally spawning anadromous fish stocks in both sub basins.

The Yakama Nation, as the Lead Agency, in coordination with the co-managers, Washington Department of Fish and Wildlife and in cooperation with the Bonneville Power Administration, the funding agency, is pursuing this. We are testing the principles of supplementation as a means to rebuild fish populations through the use of locally adapted broodstock in an artificial production program. Also, the goal is to increase the numbers of naturally spawning fish, while maintaining the long term genetic fitness of the fish population being supplemented. This concept is being utilized on the Spring Chinook within the Yakima River Basin. Also, experiments are being initiated this performance period to initially determine if there are any genetic concerns relative to domestication.

The coho and fall chinook programs were approved and implemented in the Yakima Basin. The coho programs principle objective is to determine if naturally spawning coho populations can be reintroduced throughout their biological range in the basin.

The objective of the fall chinook program is to determine if supplementation is a viable strategy to increase fall chinook populations in the Yakima subbasin. The coho and fall chinook programs are under the three step process that was established by the Northwest Power Planning Council and have gone through the provincial review process.

This report is formulated in the format of the contract with Work Elements. There are three reference documents utilized: **Table 1:** A table with the chronological listing of the Work Elements with a brief description of each; **Table 2:** A table that lists the personnel involved with their respective title/responsibilities with a number being assigned to represent their position in Table 3 report form i.e., if Joe Smith is number 1 on Table 2, the report will reference #1 in lieu of spelling his name under the Personnel column of Table 3; **Table 3:** A table that shows the per cent level of progress of each Work Element per quarter and the personnel involved. Any specific reference or comment specific to a Work Element will be done as a footnote on Table 3 or by an attachment. Attachments: **Attachment A-** Information System Management Plan, **Attachment B-** Legal/Policy Analysis Quarterly Summary report; Patrick Spurgin; **Attachment C-** Activities of Judith Woodward (Crossing Borders Communications) **Attachment D-** YKFP Updated Organizational Chart; **Attachment E-** Policy Group Minutes

TABLE 1. List of Work Elements – Management, Data & Habitat Management, Data, and Habitat activities for Contract #22554 for the period of May 1, 2005 through April 30, 2006

Yakima/Klickitat Fisheries Project Management and Oversight

General Scope

The YN as the YKFP's Lead Agency, is responsible for Project planning and design; the construction, operation and maintenance of YKFP facilities; and the monitoring and evaluation of Project research activities. The Lead Agency is also responsible to ensure adequate funding for all Project activities.

General Responsibilities of YKFP Essential Personnel

The Lead Agency is responsible for the management and implementation of all YKFP facilities. The Facilities include:

1. The Cle Elum Supplementation and Research Facilities
2. The spring chinook acclimation sites at Clark Flat, Easton and Jack Creek
3. The Marion Drain Hatchery.
4. The Prosser Hatchery
5. The coho acclimation sites in the Yakima and Naches subbasins.
6. The Chandler Juvenile Facility.
7. The Roza Broodstock Collection Facility.
8. The Roza Juvenile Outmigration Trap
9. The Nelson Springs Office Complex(s).
10. The Toppenish Office Support Complex.
11. Klickitat Office Complex (Covered under Klickitat Contract)

YKFP Management is also responsible for the efficient performance of all Project research and monitoring activities, including:

1. Monitoring spring and fall chinook, coho and steelhead natural production.
2. Monitoring adult returns and survival for spring and fall chinook, coho, and steelhead;
3. Monitoring spring and fall chinook, coho and steelhead natural production.
4. Spring chinook supplementation experiments (OCT/SNT comparison, reproductive ecology, genetics);
5. Monitoring species interaction (predation, competition, etc.)
6. Coho reintroduction feasibility experiments.
7. Coho and fall chinook broodstock developments.
8. Steelhead kelt reconditioning, experiments (in cooperation with Columbia River Inter Tribal Fish Commission (CRITFC));
9. Habitat assessments and acquisition
10. Domestication research

The YKFP management is also responsible for Project Data/Information compilation and distribution along with coordinating all planning activities.

OBJECTIVE 1. Yakima/Klickitat Project Management and Oversight

Work Elements Project Management & Oversight

- WE 119** Produce and maintain the Project Management Flow Chart for the YKFP.
- WE 119** Policy Advisor/Project Coordinator (PAPC). Lead management and oversight person for YKFP. Implements, coordinates, oversees YKFP and its' personnel..
- WE 119** Program Coordinator (PC).Under supervision of PAPC. Responsible for oversight on all financial matters, including all accounting and bookkeeping functions. Coordinates contractual financial matters including producing all financial invoices and compliance. Supervises support personnel.
- WE 119** Senior Research Scientist Under supervision of PAPC. Does oversight for all YKFP science and technical matters including research experiments and Science Technical Advisory Committee. (STAC). Develops, oversees and coordinates all monitoring and evaluation activities of the Project. Reviews and develops appropriate reports.
- WE 119** Habitat Coordinator (HC).Under supervision of PAPC. Plans and implements habitat, water quality and passage improvement projects within the Yakima subbasin. Actively functions as the lead person in the acquisition of key habitat tracts within the basin.
- WE 119** Data Base Manager. (DBM) Under supervision of PAPC. Designs, installs and coordinates the YKFP's data management and transfer system. Coordinates the compilation of all the monitoring and evaluation data that is generated by the Project. Maintains the 5 year data management plan.

Objective 2. Policy and Planning

General Scope

The YN will fulfill its policy and planning responsibilities through the tasks set forth below. The planning objective is to implement the YKFP's adaptive management policy by maintaining and keeping current all Project planning and operations documents. The PAPC will coordinate these functions with the co-managers, Washington Department of Fish and Wildlife, STAC and other agencies, as necessary.

Purpose

The YN maintains a presence in all YKFP policy and planning activities. Through this contract, the YN, as the Lead Agency, can fulfill its active participation responsibilities through coordination with the Washington Department of Fish and Wildlife, the co-managers.

Work Elements Policy & Planning

- WE 119** YKFP Policy Group. PAPC will lead all Policy Group meetings and will develop the agenda and coordinate the monthly meetings. Arranges for accurate minutes/records to be kept for meetings. Coordinates scheduling with WDFW, BPA, and other Project personnel and agencies.
- WE 118.D** Intergovernmental and Internal Relations. PAPC represents the YKFP in all intergovernmental relations with BPA, NPPC, WDFW and other agencies. Will coordinate internally with administration and elected officials.
- WE 119** Lead Agency. PAPC coordinates with participants to assure that Lead Agency responsibilities are met.
- WE 119.B** Project Funding. PAPC and key Project personnel develop annual Project funding proposals.
- WE 119.D** Project Contracts. PAPC will coordinate the development and execution of all Project contracts and manage them.
- WE 141** Reports. Provide quarterly reports (and monthly) for all contracts. Provide annual reports for contracts where applicable.
- WE 165.B** NEPA AND ESA Compliance. PAPC will coordinate all NEPA related activities for the Project with Project personnel, BPA, and WDFW.
- WE 119-F.G** Subcontracts. PAPC, in coordination with PC, will develop, execute and manage all subcontracts.
- WE 118.D** Planning. PAPC, in coordination with Senior Research Scientist, will involve key management personnel in developing all the respective plans (documents) for the Project in coordination with WDFW.

Objective 3. Provide Project Financial and Administrative Support

General Scope

The YKFP operates under several contracts to meet its research and production objectives as well as the data and habitat aspects of the Project. The administrative support requirements that are required to maintain compliance, both for the funding agency and the Yakama Nation are immense. The Project Coordinator is responsible for all financial/personnel contract compliance requirements in coordination with the PAPC.

Purpose

The current financial status of all the YKFP contracts is essential for effective and

efficient implementation of all the contracts. Adequate support staff and structure are essential in maintaining this responsibility.

Work Elements Financial & Administrative Support

- WE 119.B** Annual Budgets. PAPC will coordinate respective Project personnel to develop annual proposals and budgets for BPA funding.
- WE 119.C** Contract Financial Monitoring and Compliance. PC coordinates with PAPC in assuring financial compliance with all contracts including Project sub contracts.
- WE 119.C** Payroll Report. PC will coordinate with support personnel and develop the Payroll Report which will be submitted with quarterly reports.
- WE 119.D** Equipment Inventory. PC coordinates with Project personnel in maintaining a current equipment Inventory list and assurance on proper insurance coverage.
- WE 119** Internal Relations: PAPC and PC coordinates all operational aspects of the Project with YN Department of Natural Resources and other departments, including the Tribal Council Fish and Wildlife Committee.
- WE 141** Quarterly and Annual Reports. PAPC coordinates with appropriate Project personnel in developing monthly, quarterly and annual reports for all contracts as a deliverable to BPA.
- WE 132.A.B** Administrative Support. Provide appropriate Project contract support through the coordination of Project personnel and the employment of adequate personnel to meet these requirements.

Summary of Yakima/Klickitat Fisheries Project Management and Oversight

Time Period: May 1, 2005 through April 30, 2006

The Policy Analyst/Project Coordinator, (PAPC) maintains the responsibility for Overall Project oversight/implementation and coordination of the YKFP. This is achieved on a continued basis with operational support from the Project Coordinator and an appropriate cadre of bookkeepers and support staff. They also represent the ability to maintain an updated status on the vast procedural changes from the key funding agency.

Summary of key activities:

1. Maintained the level of coordination and completion of quarterly reports under the Pisces procedure for all of Bonneville Power Administration contracts.
2. Maintained, on a timely basis, the invoicing for each respective contract.

3. As the Lead Agency, coordinated the activities pursuant to each operational facility within the YKFP.
4. Assigned personnel effectively organized/coordinated the Yakima Basin Aquatic Science and Management Conference held at Central Washington University, Ellensburg, Washington.
5. Scheduled and coordinated the monthly YKFP Policy Group meetings as reflected in the included minutes of each meeting.
6. Maintained an update status with the Tribal Department of Natural Resources and Tribal Council F&W Committee.
7. Assisted and coordinated Project emergency activities on a daily basis.
8. Initiated /finalized sub-contracts for certain services.
9. Took the lead on coordinating the development of proposals/budgets for all of the YKFP contracts.
10. During the contract(s) renewal process, maintained an equipment inventory list which is updated annually.
11. Maintained an updated operation chart for the YKFP.
12. Effectively coordinated with co-managers, (Washington Department of Fish and Wildlife).
13. Maintained an open door policy when/where other entities were involved, including the Federal Agencies, such as U.S. Fish and Wildlife Service.
14. Maintained, on a priority basis, total compliance with each respective funding agency, including BPA.

Since the YKFP is an all stock initiative which is testing the proposed concepts of supplementation, we are experiencing new and unforeseen challenges. Up to this point of the operation, the Science Technical Advisory Committee (STAC) has been effective in thorough review and recommendations. As proposed considerations are recommended for a certain species, STAC is instrumental in formulating the scientific review. The NEPA requirements are coordinated with BPA, or the funding agency for this specific activity. A majority of the challenges that are considered are addressed through the utilization of adaptive management.

The status of specific work elements and objectives can be reviewed in the charts that are utilized in the main portion of this summary report. It will also contain the respective personnel involved with each work element.

In conclusion, it's fair to say that some very challenging results have been generated up to this point. We appreciate the diversity that is evident within the YKFP.

Objective 4. Data Processing and Information
(Work Elements C174, D160, E159, and F161)

General Scope

Develop an overall structure for the collection and management of YKFP data, ultimately locating it in an accessible location. The system will be consistent with YKFP and regional data management guidelines and objectives. The Data team responsible for achieving this is lead by the Programmer/Database Manager.

Purpose

The goal of this objective is to standardize, consolidate, centralize and make accessible all data and information generated by the YKFP on a timely basis.

Compile, Standardize and Consolidate and Maintain Project Data and Information System

Work Elements Data and Information

- WE C.174 **Maintain Yakama Nation YKFP Information System Management Planning**
Consultation and Coordination. The data management team will consult and coordinate with YKFP scientists, policy personnel, BPA and appropriate NPCC personnel to determine the YKFP’s near and long term data and information management needs and to assure that these needs are being met.
- WE D.160 **Yakama Nation YKFP Data and Information Management Information System Management Plan (ISMP).** The data management team has developed a 5-year Information System Management Plan (ISMP) for the YKFP. The ISMP will be reviewed and updated as necessary, incorporating changes in overall data management design and strategies based on recommendations and feedback received from peer review. The ISMP is subject to ongoing review and approval by the YKFP Policy Group. The latest update to the ISMP is included with this report as Attachment A.
- WE D.160 **Yakama Nation YKFP Data and Information Management Quality Control, Standardization and Storage.** To ensure quality control, standardization, and proper storage procedures for all data and information collected, the YN will:
1. Develop a standardized data management and quality control system consistent with the volume and diversity of the data collected;
 2. Supervise the reformatting and inputting of all data into a standardized system; and
 3. Meet and coordinate with BPA representatives to review the database system’s compatibility with existing BPA and NPCC data management systems.
- WE F.161 **Yakama Nation YKFP Data and Information Dissemination**

Information Management and Transmission. The YN will design a data and information management and transmission system capable of handling the YKFP's existing and future generated data and information. This system will be accessible to appropriate researchers.

- WE F.161 Yakama Nation YKFP Data and Information Dissemination
YKFP Internet Home Page. The YN will develop a YKFP home page in consultation with staff at the PSMFC and other relevant BPA-funded projects. The data management team will manage and maintain the home page and keep it current.
- WE B.118.A Yakama Nation YKFP Policy Coordination and Analysis
Equipment Analysis. The team will evaluate and assess computer equipment needs, including the appropriate software. This information will be referenced in the ISMP. The team will assist the PAPC in developing appropriate funding requests for necessary equipment.
- WE D.160 Yakama Nation YKFP Data and Information Management
Monitoring Yakima Subbasin Activities. The team is monitoring the data collection systems of the YKFP, which includes the data from the CESRF and the Prosser and Marion Drain facilities. Through the monitoring process, the team will develop efficient methods for sampling and archiving all data, which will be described in the ISMP. This is an ongoing activity.
- WE D.160 Yakama Nation YKFP Data and Information Management
Monitoring Klickitat Subbasin Activities. The team has started monitoring the data collection systems of all YKFP activities conducted in the Klickitat River Basin, including Timber, Fish, and Wildlife (TFW): stream habitat inventory; mainstem and tributary salmonid population status; water quality; and mainstem passage engineering data. The team will develop an efficient method to access and archive all data and information produced by the YKFP's Klickitat component. The team will develop a plan for monitoring and archiving Klickitat data, which will be incorporated into the 5-year ISMP. The cost factors for personnel involved in implementing this will be pro-rated within each respective budget.
- WE E.159 Yakama Nation YKFP Data Acquisition
Geographic Information Systems (GIS). The team will develop decision support GIS tools and maps for the Yakima and Klickitat basins. The team will link YKFP databases to GIS databases and maps based on availability and suitability of the data and on priorities set by STAC and / or the policy group.
- WE K.141 Yakama Nation YKFP Project Status Reports

Reports. Under the direction of the PDM, the team will produce reports consistent with the overall contract: Quarterly summary reports and an annual report that will capture the full year's activities. The reports will summarize major activities and accomplishments for the respective period.

Summary of Data Management Major Accomplishments for May 1, 2005 through April 30, 2006.

Consultation, Coordination, and Data Sharing

1. Provided Yakima Basin data to, and participated in, the Collaborative Systemwide Monitoring and Evaluation Project (CSMEP) and the Yakima Subbasin and Recovery Planning processes.
2. Attended Pacific Northwest Aquatic Monitoring Project (PNAMP) 'M&E Practitioners' workshop to share, review, and discuss: recent surveys regarding prioritization of regional M&E issues; current advances in RME; and on-the-ground implementation issues from 2004 and 2005 field seasons.
3. Attended Pacific Northwest environmental data management workshop sponsored by PNAMP and the Northwest Environmental Data (NED) network to discuss actions to improve regional data management for all disciplines. Presented information on Yakima and Klickitat subbasin data management activities.
4. Participated in the All-H workgroup of the Hydrosystem Biological Opinion Remand process including internal policy, technical, and legal coordination meetings and development of a 'white paper' on 'crediting' supplementation projects. Conducted GIS analysis for this process.
5. Revised Hatchery Genetic Management Plans (HGMPs) for Yakima Basin species and provided revised documents to NOAA fisheries.
6. Conducted database retrieval and analyses to assist in answering queries from MIPT/STAC and various outside agencies. Examples included: juvenile-adult and adult-adult survival data; spring chinook timing and size data to Canadian researchers working on the POST (coast-wide acoustic tag tracking system); Roza steelhead passage data for BOR and University of Idaho researchers; providing tag retention data to WDFW; providing growth profile, release, and other data for Project Annual Review presentations; etc.
7. Coordinated a YN coho workshop to share progress and to discuss and develop methods to better coordinate and maximize results from coho restoration efforts in the Wenatchee and Yakima Basins.

Planning and Reporting

8. Assisted with development of Yakima and Klickitat project proposals pursuant to the FY2007-2009 NPCC and BPA budget and review cycle.
9. Assisted with posting of quarterly status reports to BPA's PISCES system for YKFP activities. Completed review and development of 2004 YKFP annual reports for data, management, and habitat and monitoring and evaluation. Edited and developed 2005 YKFP M&E annual report. Ensured that all YN-sponsored BPA annual reports were properly posted to BPA web site.
10. Participated in the Project Annual Review (2005 internal and public review).

11. Attended monthly YKFP policy group meetings.
12. Participated in meetings to review status of steelhead kelt work and evaluation of reproductive success.
13. Assisted with modifications / changes in the Klickitat Master Plan; assisted with development of response to ISRP reviews of Klickitat Master Plan.
14. Coordinated development, review, and finalization of CESRF OCT / SNT juvenile and adult survival paper incorporating existing literature, reports and all available data for the first five-year brood cycle. Paper was submitted to AFS North American Journal of Fisheries Management in June of 2006.
15. Re-wrote a paper summarizing Phase I coho restoration feasibility work responding to and incorporating AFS reviewer comments. Re-submitted the paper titled "Evaluating the Feasibility of Reestablishing a Coho Salmon Population in the Yakima River, Washington" to the American Fisheries Society (AFS) North American Journal of Fisheries Management. The paper was accepted for publication in February of 2006.
16. Developed a manuscript summarizing 2001-2005 steelhead kelt reconditioning work. The manuscript is presently in internal review.
17. Consulted with WDFW staff regarding photographs from Cle Elum spawning activities used in the development of a manuscript titled, "Differences in Body Shape Between First-Generation Hatchery and Wild Upper Yakima River Spring Chinook Salmon" submitted to Transactions of the AFS in May.
18. Continued development and updating of the "Executive Summary" report summarizing all Yakima Basin spring chinook monitoring and evaluation work.
19. Developed PowerPoint presentations of coho and steelhead reconditioning work. Presented coho paper at Northwest Fish Culture Conference in Dec of 2005 and at Oregon chapter AFS in March of 2006. Presented steelhead reconditioning work at PAR in June of 2006.
20. Assisted with development of PowerPoint review of YKFP projects for presentation to DNR managers, the Fish and Wildlife Committee, and the Yakima Subbasin Planning and Recovery Board. Presented the presentation to the Yakima Subbasin Planning and Recovery Board in June of 2006.
21. Updated and maintained information system management plans for Yakima and Klickitat data management activities.

Database Development, Maintenance, and Analysis

22. Maintained a database of Yakima Basin dam counts (Prosser and Roza). Worked with Univ. of Washington Data Access in Real Time (DART) staff to maintain an ODBC database link for loading current calendar year and maintaining historical data. Worked with YN video counting and DART staff to maintain the accuracy and currency of data in these databases.
23. Developed decision document materials regarding juvenile and adult survival comparisons of HI and LO treatment groups for MIPT/STAC and Policy Group discussion and evaluation.
24. Developed analysis and materials regarding adult survival of PIT and non-PIT tagged spring chinook returns to Roza Dam for MIPT/STAC discussion and evaluation.

25. Maintained spring chinook databases and software (2005 Prosser dam count, 2005 Roza Dam brood/recapture, 2005 harvest, 2005 Cle Elum spawning, BY2005 ponding and rearing, BY2004 final rearing, spawner survey, and Cle Elum water usage reporting) including data capture, quality control, incorporation of data from other agencies (e.g. USFWS fish health data, NMFS precocial and spawner survey data, etc.) to ensure data are comprehensive, consistent, accurate, and up-to-date.
26. Maintained Prosser steelhead kelt database and software; maintained database of kelt PIT recaptures; reviewed and summarized Prosser steelhead kelt data to date for 2005 season; analyzed and prepared summaries of 2001-2005 release and recapture data; and setup of data capture database for 2006 activities.
27. Maintained databases of Chandler juvenile sampling activities and all PIT-tagged releases in the Yakima River Basin. Posted regular in-season updates of estimated juvenile passage and timing at Prosser Dam to the ykfp.org web site.
28. Submitted mark (CWT or PIT) data for all Yakima River releases and recaptures to regional databases (RMIS and PTAGIS) in a consistent and timely manner.
29. Prepared and maintained data capture systems for 2005 fall chinook and coho operations including: Prosser Denil hardware/software setup; incorporation of age data from scale sample analysis; and radio telemetry tracking system.
30. Prepared data capture systems for 2005 Cle Elum spring chinook spawning, participated in weekly spawning activities, with main responsibility for data entry, quality control review of data, processing and archiving of photographs, and sending out weekly summaries of spawning activities.
31. Compiled and summarized all 2005 adult spring chinook return and spawning data for the Yakima Basin. Prepared and delivered 2006 adult spring chinook forecast. Developed 2006 brood need and collection schedule.
32. Analyzed data capture database for 2005 Cle Elum spring chinook spawning to produce summary reports for the season and assist in pairing the 2005 brood fish for placement in incubation trays and rearing ponds. Ensured accurate entry of BY2005 egg enumeration data and produced egg enumeration summary reports.
33. Continued work with fall chinook biologist to develop databases to better organize and summarize all related data.
34. Continued development of database to allow easy search and retrieval of YKFP technical reports and publications.
35. Worked with Klickitat field office staff to update run reconstruction and harvest data for all species.
36. Assisted avian predation biologist with development, review, and updates of spreadsheets and documents relating to ongoing avian predation work in the Yakima Basin.

Equipment and Web Site Maintenance

37. Performed routine equipment and anti-virus software maintenance (troubleshooting, hardware/software installation and maintenance) at all sites (Nelson, Cle Elum, Roza, Prosser, and GIS server system in Toppenish).
38. Performed routine maintenance of the YKFP web site including assisting users with their accounts, and adding and fixing links to YKFP technical reports and publications. Continued to improve and add content to the website.

39. Organized and posted abstracts and presentations from a Yakima Basin steelhead workshop and the annual Science and Management Conference to the ykfp.org web site.

GIS Mapping

40. Completed ESRI training class titled, "ArcSDE Administration for SQL Server".
ArcSDE is a system to share GIS data on a network while controlling user permission levels. Worked with the Klickitat Data Manager to set up a shared GIS database at the Klickitat field office.
41. Contributed several major and minor revisions to the Klickitat steelhead spawning database.
42. Completed nine online training classes to enhance knowledge of ESRI's ArcGIS and other mapping and geo-database products.

Note: The majority of Klickitat basin-specific data management activities are covered in a separate report pursuant to Klickitat contract(s).

OBJECTIVE 5. Project Annual Review (PAR)/Quarterly and Annual Reports

General Scope

The Project Annual Review (PAR) is a vital part of the annual review and planning cycle that contributes to the research consideration for the YKFP. The PAR consists of a series of presentations documenting the production, monitoring and evaluation objectives and results of the previous years' research projects in the YKFP. The PAR affords an opportunity for formal peer review and interaction with scientists who have a viable interest in supplementation and the resource.

Purpose

The Project's goal is to schedule and conduct an annual PAR, which will include presentations from each of the task specific participants with invitations to others interested in the YKFP. The PAR will assist the Policy Group in project planning and management activities and will be made available to regional scientists through the PDM.

Work Elements PAR, Quarterly & Annual Reports

- WE 183.A** Schedule. PAPC, in coordination with Policy Group and Senior Research Scientist, will select an appropriate date and place.
- WE 99.A** Peer Review and Planning. Senior Research Scientist will coordinate with Policy Group in settling up PAR, including selection of Peer Reviewers. Formal agenda of presenters will be established and a formal record will be recorded for future planning purposes.
- WE 99.A** Cataloging PAR Results. All PAR documents will be entered into the library with a copy being submitted to BPA.

OBJECTIVE 6. Scientific Oversight by Science Technical Advisory Committee (STAC)

General Scope

The Science/Technical Advisory Committee (STAC) is composed of representatives from the Yakama Nation (YN) and the Washington Department of Fish and Wildlife (WDFW). STAC is responsible for the immediate oversight of all scientific aspects of the YKFP.

Purpose

STAC will develop and review all pertinent scientific and technical information presented to the Policy Group for action. STAC is also responsible for the review and recommendation of the information/data that is presented at the annual PAR.

Work Elements STAC

- WE 118.B** Research Planning. The Senior Research Scientist will serve as YN's STAC representative and the lead person for STAC. STAC will plan, review and recommend all research activities for the Project.
- WE 118.C** Project Annual Review (PAR) The Senior Research Scientist will coordinate with PAPC in planning and facilitation of the PAR.
- WE 118.D** Intergovernmental and Other Relations. The Senior Research Scientist will meet and coordinate with all appropriate agencies and entities on the scientific aspect(s) of the Project.
- WE 118.B** Project Science Documents. The Senior Research Scientist will coordinate the development of the various scientific documents for the Project.
- WE 118.B** Research Objectives. Senior Research Scientist will direct all research objectives of the Project in coordination with WDFW and the PAPC.
- WE 118.E** Monitoring Implementation Planning Teams. STAC will be directly responsible for the formulation/implementation of MIPT.
- WE 118.D** Subbasin Planning. Senior Research Scientist will participate in the NPPC Provincial Rolling Review and Subbasin Summary and Planning development process.

OBJECTIVE 7. Habitat, Water and Passage

General Scope

The YKFP will improve and protect habitat deemed necessary to further Project

objectives. The Habitat Coordinator (HC) will coordinate with the respective agencies, committees and groups on matters pertaining to habitat, water resources and fish passage matters within the Yakima subbasin.

Purpose

The YKFP's Ecosystem Diagnostic and Treatment (EDT) analysis will provide information related to habitat projects that will improve salmonid production in the Yakima subbasin.

Work Elements Habitat, Water and Passage

- WE 118.D** Yakima Basin Technical Advisory Group. Habitat Coordinator (HC) will coordinate with YN representative on implementation of Title XI, P.L. 103-434.
- WE 114.A** Fish Passage: HC will provide/coordinate the biological input for the design and construction of fish passage and protective facilities for the YKFP. Will also coordinate 'Safe Access' passage projects.
- WE 118.D** Intergovernmental and Other Relations. HC will coordinate with all agencies on matters affecting fish habitat and passage in the Yakima subbasin.
- WE 122.A** Projects and Laws Affecting the YKFP. HC will monitor, review and provide comment on projects that may affect fish habitat and passage in the Yakima subbasin.
- WE 122.A** Watershed Restoration Forums. HC will monitor and provide input to appropriate watershed restoration forums to ensure that decisions reflect the goals of the YKFP.
- WE 118.D** Coordination With Funding Agencies. HC will coordinate with appropriate funding agencies regarding habitat-related projects in Yakima subbasin.
- WE 114.A** Habitat Improvement Projects. HC will plan and implement habitat improvement projects consistent with the Yakima Subbasin Summary.
- WE 165.B** Endangered Species Act. HC will monitor activities relative to the Endangered Species Act.
- WE 119** Land Securing and Oversight. HC provides leadership in securing biological strongholds for fish and management plans.

Summary of Yakima/Klickitat Fisheries Project Habitat.

Time Period: May 1, 2005 through April 30, 2006

The Habitat Coordinator and staff are responsible for:

- providing input to the regional salmon recovery board;

- prioritizing and implementing passage, screening, restoration, protection and assessment projects;
- providing technical input to governmental entities on salmonid habitat management; and,
- developing and implementing management plans for protected habitat parcels.

Over this time period primary activities and accomplishments include the following:

1. Protection of a 50-acre floodplain parcel (Holmes parcel) in the Kittitas Reach of the mainstem Yakima.
2. Securing cost share funding and initiating restoration of the Holmes riparian habitat.
3. Environmental education activities via field trips to the Holmes habitat parcel, involving eight primary grade classrooms.
4. Coordinating a volunteer planting and celebration day at the Holmes parcel.
5. Participation in a variety of governmental natural resource regulatory forums, including: the Yakima County Critical Areas Roundtable; the Kittitas County Resource Lands Advisory Committee; the City of Ellensburg Critical Areas Committee; and, the Union Gap floodplain restoration planning group.
6. Participation in voluntary natural resource planning and restoration groups, including the Yakima Tributary Access and Habitat Program and the Yakima Fish and Wildlife Recovery Board.
7. Coordination with Washington Department of Fish and Wildlife and the Kittitas Conservation Trust (a local non-profit Land Trust) on watershed restoration projects, including lower Reecer Creek passage and instream flow improvement and a Cle Elum River Engineered Log Jam design/construction proposal.
8. Participation in grant writing, landowner interaction and associated activities for protection of the Runacres and Hundley properties, which are both located in the Easton/Cle Elum Reach of the mainstem Yakima River.
9. Promoting passage improvements in the Taneum and Manastash tributaries, through involvement in planning groups and data collection.
10. Oversight of restoration activities at the Harris Habitat property (owned and managed by the Yakama Nation – YKFP).
11. Management plan development for other Yakama Nation habitat parcels, including the Fortune property, Foster property and Cle Elum confluence properties.

Although the challenges to salmonid recovery appear daunting at times, these accomplishments demonstrate a commitment to watershed stewardship that is being fostered by the YKFP.

OBJECTIVE 8. Sub-Contracts for Needed Services.

General Scope

The YKFP is a diverse Project and requires services that are best served through a contractual arrangement. It has proven to be very beneficial to employ the services of personnel who not only have a specialized area of expertise but are also distinctly

familiar with the YKFP.

The YN will contract with qualified personnel, agencies or firms that possess the abilities to meet specific service requirements of the YKFP. The YN will negotiate and execute a personal services contract and/or agreement and monitor the services, once implemented.

Work Elements Sub-Contracts

- WE 119.F Policy/Legal Analyst. (PLA) Develop/Implement a contract with PLA to provide needed services in the areas of management, labor, NEPA/SEPA, local/state permitting requirements, document review and general contract law.
- WE 118.B Science Technical Advisory Committee. (STAC) Core representation on STAC is YN Research Manager and a representative from WDFW..STAC coordinates, recommends all technical/scientific matters for the YKFP. They also coordinate all the Monitoring and Evaluations activities of the YKFP. Make recommendations to the PG for decisions and can recommend/request to contract essential personnel or services for STAC requirements.
- WE 119.G YKFP Technical Writer. Develop/Implement a contract to employ the continued services of Crossing The Borders, a technical writer, to assist in the annual revision and long-term maintenance of various YKFP documents, including the PSR's for the preferred species.

TABLE 2. List by number of Project personnel/title/responsibilities under this contract.

Number/Name	Position Title/Responsibility Summary
1. Melvin R. Sampson	Policy Analyst/Project Coordinator: Responsible for Overall Project oversight/implementation/coordination.
2. Dr. Dave Fast	Senior Research Scientist: Responsible for immediate oversight/development of all technical/scientific matters for the Project. Takes lead with STAC.
3. Scott Nicolai	Habitat Coordinator: Plans and implements habitat and water quality improvement projects within basin, including land purchases. Monitors other agencies/entities related activities within basin and represents YN in related forums/meetings.
4. Hank Fraser	Tributary Biologist: Interacts with private landowners who own tributary and/or irrigation structures, in order to promote protection, restoration and migratory passage in key

tributaries in the Yakima Subbasin. Attends all meetings of the Yakima Tributary Access program.

5. Kelly C. Larimer
Biologist: Responsible for landowner and agency interaction to promote protection in priority reaches of the mainstem Yakima, Naches and Teanaway Rivers. Develops and implements management plans for existing protection parcels.
6. William Bosch
YKFP Data Manager: Designing, installing and managing a data management and transfer system for all of the YKFP data, including the Klickitat basin.
7. David Lind
YKFP Co-Data Manager, Part Time: Design, install and assist in managing a data management and transfer system for all of the YKFP data, including the Klickitat basin.
8. Paul Huffman
Data Systems Specialist (GIS); Creates geographic information systems (GIS) to analyze and manage fish habitat and populations. Develops GIS as a management and decision-support system for the Project. Develops and maintains tools for the YKFP project web site.
9. Irene James
Data Management Technician: Assists in the development of Geographic Information System (GIS). Enters geographic data via keyboard, downloads data from GPS units, data loggers and the Internet Prepares plots, illustrations and other types of output. Assists Project staff members in using the GIS. Currently 0.5 FTE.
10. Michael Babcock
YKFP Assistant Data Manager: Design, install and assist in managing a data management and transfer system for all Klickitat basin YKFP data.
11. Adrienne Wilson
Project Coordinator: Responsible for all accounting, bookkeeping, budget, invoicing and reporting duties for the YKFP, including budget(s) development and modification. Supervises all Project financial and clerical support personnel.
12. Charlotte Bennett
Bookkeeper II. Accounts Payable, responsible for processing payments on a timely basis. Assure correct fund and projects numbers are used. Post to cuff accounts as needed.
13. Rachel Castilleja
Bookkeeper IV: Responsible for varied bookkeeping tasks; cuff accounts, preparing financial documents, purchase orders, journal entries, travel authorizations, quarterly reports; responsible for processing sensitive documents and records. Coordinates with YN administration, the formal processing of Project/Fisheries documents in a timely manner.

- 14. Ida Sohappy-Ike** Bookkeeper IV: Responsibilities same as number 13.
- 15. Susan Tynan** Bookkeeper III: Responsible for monitoring several accounts for: payroll, report developing/reconciliation; employee timesheet verification; Payroll Action processing; maintain sensitive/capital equipment inventory w/assurance of proper insurance; coordinates with Project Biologists/personnel; and assists in coordinating Project Annual Review.
- 16. Vacant** Accounts Payable/Librarian: Responsible for librarian, secretarial, receptionist, accounts payable, accounts receivable and related tasks. Primarily assigned to the Nelson Springs office.
- 17. Carol S. Speedis** Office Assistant V: Responsible for maintaining log of all documents that leave the YKPF office to keep a record of location of Grants/Contracts, reports, letters, sub-contracts etc. Coordinates with YN administration, the formal processing of Project documents in a timely manner. Currently assigned duties of recording/transcribing Policy Group meeting minutes. Other duties as assigned
- 18. All Personnel** Number **18** will be used in **Chart # 3** when all Project personnel are involved in that respective Task.

Sub-Contracts:

- 19. Pat Spurgin** Policy/Legal Analyst, (PLA): Provides technical assistance in areas of management, labor, NEPA/SEPA, permitting, document review and general contract law.
- 20 YN&WDFW** Science Technical Advisory Committee: Responsible for Representatives of Project technical and scientific activities including the monitoring and evaluation. May contract for special needed services and personnel for given situations as they may determine.
- 21 Judith L Woodward** YKFP Technical Writer: Provides the technical writing skills in the development, revision and long-term maintenance of YKFP documents that track the evolution of the Project. Will convert some document formats to serve as the master plan for certain specific species.

TABLE 3. Percent and status of completion for the Objectives/Tasks.

Percent and status of completion for the Objectives/Tasks of the YKFP Management, Data, and Habitat, Project 1988-120-25, with the performance period of May 1, 2005 through April 30, 2006. Where necessary, footnotes will be utilized to address specific circumstances. F=field or lab work, O=Office Work; See Table #2 for correlation of numbers for Personnel. The respective aggregate % of completion per Work Element is in parenthesis. Where there is both Field and Office activity, the aggregates need to be combined to determine full % of completion.

Obj./Task	1 st Quarter April - June		2 nd Quarter Jul - Sept		3 rd Quarter Oct - Dec		4 th Quarter Jan - Mar		Personnel
	%F.	%O.	%F.	%O.	%F.	%O.	%F.	%O.	
Obj. 1									
WE 119		25		25(50)		25(75)		25(100)	11
WE 119	5	20	5(10)	20(40)	5(15)	20(60)	5(20)	20(80)	1,2,3,11
WE 119		25		25(50)		25(75)		25(100)	11
WE 119	10	15	10(20)	15(30)	10(30)	15(45)	10(40)	15(60)	1,2,3,6,10
WE 119	10	15	10(20)	15(30)	10(30)	15(45)	10(40)	15(60)	2,3,14,16
WE 119	15	10	15(30)	10(20)	15(45)	10(30)	15(60)	10(40)	3,11,14
WE 119	5	20	5(10)	20(40)	5(15)	20(60)	5(20)	20(80)	1,2,6,7,8,9
Obj. 2									
WE 119		25		25(50)		25(75)		25(100)	1,2,3,6,7,16,17
WE 118.D		25		25(50)		25(75)		25(100)	1
WE 119		25		25(50)		25(75)		25(100)	1,2,18
WE 119.B		25		25(50)		25(75)		25(100)	18
WE 119.D	5	20	0(5)	25(45)	5(10)	20(65)	5(15)	20(85)	1,2,3,11
WE 141		25		25(50)		25(75)		25(100)	1,2,3,6,10,11
WE 165.B		100		0(100)		0(100)		0(100)	1,2,3,5,18
WE 119.F.G		45		55(100)		0(100)		0(100)	1,2,19, 20,21
WE 118.D		25		25(50)		25(75)		25(100)	1,2,3,6,19

TABLE 3 Continued. Percent and status of completion for the Objectives//Work Elements of the YKFP Management, Data, and Habitat, Project 1995-064-24, with the performance period of May 1, 2005 through April 30, 2006.

Obj./Task	1 st Quarter April - June		2 nd Quarter July - Sept		3 rd Quarter Oct - Dec		4 th Quarter Jan - Mar		Personnel
	%F.	%O.	%F.	%O.	%F.	%O.	%F.	%O.	
Obj. 3									
WE 119.B		30		0		30(60)		40(100)	1,2,3,6,7,11,13,14
WE 119.C		40		25(65)		10(75)		25(100)	1,11,13,14
WE 119.C		15		15(30)		45(75)		25(100)	11,13,14,15
WE 119.D		40		15(65)		10(75)		25(100)	11,13,14,15
WE 119.D		25		15(40)		25(65)		35(100)	1,11
WE 141		25		25(50)		25(75)		25(100)	1,2,3,6,7,10
WE 132 A.B		25		25(50)		25(75)		25(100)	1,11,12,13,14,15,16,17
Obj. 4									¹
WE C.174		25		25(50)		25(75)		25(100)	6,7,8,9,10
WE D.160		0		0		0		100(100)	6,7,9,10
WE D.160		25		25(50)		25(75)		25(100)	6,7,9,10
WE F.161		25		25(50)		25(75)		25(100)	6,7,9,10
WE F.161		25		30(55)		20(75)		25(100)	6,7,8,9,10
WE B118		25		25(50)		25(75)		25(100)	6,7,9,10
WE D.160	5	20	5(10)	20(40)	5(15)	20(60)	5(20)	20(80)	6,7,8,9
WE D.160	5	20	5(10)	20(40)	5(15)	20(60)	5(20)	20(80)	6,7,8,9,10
WE E.159		25		25(50)		25(75)		25(100)	6,7,8,9,10
WE K.141		25		25(50)		25(75)		25(100)	6,7,8,9,10

¹ While personnel 7, Data systems specialist (GIS) is not referenced in any of the task descriptions relative to this objective, the individual in this position has broad experience and plays a key support role in: network and systems administration and maintenance; web site design, development, administration and maintenance; data backup, storage and PC anti-virus maintenance; and in development of decision support GIS tools and maps for the Yakima/Klickitat basins. The data management technician provides GIS and technical support for Work Elements F.161, D.160, and E.159

TABLE 3. Continued, Percent and status of completion for the Objectives/Tasks for the YKFP Management, Data, and Habitat, Project #1995-064-24, with the performance period of May 1, 2005 through April 30, 2006.

Obj./Task	1 st Quarter April - June		2 nd Quarter Jul - Sept		3 rd Quarter Oct - Dec		4 th Quarter Jan-March		Personnel
	%F.	%O.	%F.	%O.	%F.	%O.	%F.	%O.	
Obj. 5									
WE 183.A		100		0(100)		0(100)		0(100)	1,2,3,6,7
WE 99.A		100		0(100)		0(100)		0(100)	2
WE 99.A		75		25(100)		0(100)		0(100)	2,6
Obj. 6									
WE 118.B		30		20(50)		25(75)		25(100)	2,1,6,7
WE 118.C		100		0(100)		0(100)		0(100)	2,1,6,7
WE 118.D		30		20(50)		25(75)		25(100)	2,1,6,7
WE 118.B		50		10(60)		20(80)		20(100)	2,1,6,7
WE 118.B		30		20(50)		20(70)		30(100)	2,1,5
WE 118.E		25		25(50)		25(75)		25(100)	2,1,5
WE 118.D		40		10(50)		40(90)		10(100)	2,1,3,6
Obj. 7									
WE 118.D		5		0(5)		5(10)		90(100)	3
WE 114.A		25		10(35)		10(45)		55(100)	3,4
WE 118.D		20		10(50)		25(75)		25(100)	3
WE 122.A		40		25(50)		25(75)		25(100)	3
WE 122.A		25		25(50)		25(75)		25(100)	3,1
WE 118.D		25		25(50)		25(75)		25(100)	3
WE 114.A		40		20(60)		20(80)		20(100)	3,5
WE 165.B		0		0(0)		0(0)		100(100)	3
WE 119		10		20(30)		30(60)8		40(100)	3,4,5,14
Obj. 8									
WE 119.F		25		25(50)		25(75)		25(100)	1,2,19
WE 118.B		0		0		0		0	1,2
WE 119.G		15		15(30)		20(50)			1,2,21

**Yakima Klickitat Fisheries Project
Management, Data, and Habitat (198812025)**

Information System Management Plan (ISMP)

Draft, July 27, 2006

**Bill Bosch, David Lind, and Paul Huffman
Project Data Managers
Nelson Springs Office
771 Pence Road
Yakima, WA 98902**

Updated July, 2006

YKFP Information System Management Plan (ISMP)

1. Overview

The Yakima Klickitat Fisheries Project (YKFP) was originally conceived by the Northwest Power Planning Council in 1982 to enhance fisheries in the Yakima and Klickitat River Basins. YKFP personnel include employees of the Yakama Nation (YN), the Washington Department of Fish and Wildlife (WDFW), and the Bonneville Power Administration (BPA). Some project work is also contracted out to agencies such as the National Marine Fisheries Service (NMFS) and the University of Washington. While this report includes some discussion of Klickitat Basin data management activities, Klickitat-basin specific activities will be addressed in more detail in planning and reporting documents being developed under that separate YKFP contract (198812035).

Yakima Basin project work sites are located throughout the state of Washington, including the Roza Dam juvenile and adult monitoring facility, the Chandler and Prosser juvenile and adult monitoring facilities, the Cle Elum fish hatchery and associated acclimation sites, YN project offices in Toppenish and at Nelson Springs, and WDFW offices in Olympia, Yakima, and Ellensburg.

Since the beginning of the YKFP, vast amounts of data and reports have been generated covering all aspects of the project. Different project personnel have assumed responsibility for maintaining and updating data corresponding to the aspect(s) of the project they are focusing on. Historically, these data have been stored in a variety of formats at the various project offices and work sites. Data have been shared via disk and electronic mail transfers.

Given the volume of data generated by this project, the YKFP recognized a vital need to organize and consolidate all of the project data into a cohesive network. At a minimum, such a network would allow:

- standardization of data input and storage,
- rigorous data validity and error checking,
- access by appropriate project personnel for data entry, edit, and analysis purposes to all appropriate data in the YKFP database,
- assurance that all project personnel are working with the same data, and
- consistent and regular backups of all vital project data.

The Yakama Nation, as the lead agency for the YKFP and pursuant to the project contract, has been working since 1999 to accomplish the above objectives, and has developed this Information System Management Plan (ISMP) to guide the YKFP's efforts to organize, consolidate, and make accessible all of the project's data. This plan is updated on a regular basis to incorporate changing project needs and is subject to ongoing review and approval by the Policy Group.

2. YKFP Information System Objective

The main objective of the project database is to facilitate the assessment of the YKFP's progress towards achieving its stated purpose, which is "to test the assumption that new artificial production can be used to increase harvest and natural production while maintaining genetic resources" (NPPC 1990). To accomplish this objective, the database must:

- incorporate all of the data necessary to test the project assumption,
- ensure that the data are accurate,

- provide access to a fairly lengthy time series of data,
- allow analysis of related variables, and
- allow the data to be shared.

3. Project Data Summary and Current Status

3.1 Hatchery Operations: River, well, and rearing/adult-holding pond temperature and flow data.

3.1.1. Cle Elum Supplementation and Research Facility (CESRF)

Background: Hardware and software engineers from the consulting firm CH2M HILL were contracted to build a system to track temperature and flow data from: river water, well water, juvenile rearing ponds, and adult holding ponds at the Cle Elum Supplementation and Research Facility (CESRF) and/or at the acclimation sites. This system was implemented on two mirrored Windows NT systems using a third party software system called “Wonderware Factory Suite”. The system maintains data in a series of log files. In 2000, this system was upgraded to copy data from the Wonderware log files to a series of tables in Microsoft Access.

Data Status: The system was implemented when the CESRF went on-line in the fall of 1997. CESRF data from September of 1997 through August of 2000 are available in Wonderware log file format on a series of backup “Jaz” cassette tapes. CESRF data from September of 2000 to present are available in a series of tables within a Microsoft Access database on the mirrored Windows NT machines at the CESRF. Data management staff have developed an interface to the CESRF hatchery operation data in this Access database and have used it to report monthly minimum, maximum, and average CESRF rearing pond temperatures for all broods since April of 2001. Data management staff have also developed routines to report quarterly water usage for hatchery operations from these databases to the Washington State Department of Ecology. Data management staff are now backing up this Access database of water reporting information to offsite storage media on a monthly basis. Hatchery operations data for the acclimation sites are managed under the Hatchery operations and maintenance contract.

In 2003, Technical Systems Incorporated (TSI) was contracted to maintain this system, including all physical systems hardware components, the five data capture personal computers at Cle Elum and the three acclimation sites, the Wonderware software, and the interface between the Wonderware software and the Microsoft Access storage database. Pursuant to recommendations from TSI, hardware and software upgrades to these data capture computers were completed in 2005.

3.1.2 Prosser Hatchery Facilities

There presently are no automated systems for collecting these types of data at the Prosser Hatchery. Some of these data may be collected manually and recorded on paper and/or electronically. Data management staff will assess the status of these data at the Prosser facilities, and if available, develop a plan for managing these data. This will be considered a lower priority task.

3.1.3 Klickitat Hatchery

The Klickitat Hatchery is now under the management of the YKFP with the Yakama Nation as lead entity. YKFP data managers are in the process of reviewing present hatchery data management operations and will ensure that plans are in place for the collection and management of hatchery operations (temperature and flow) data where necessary and applicable.

3.2 Gravel-to-Gravel Accounting: Adults collected, eggs spawned, egg survival, fry survival, marking groups, releases, juvenile outmigration survival, adult harvest, adult dam counts, and natural spawners.

3.2.1 Yakima River Spring Chinook

The data management team has developed a comprehensive system for collecting and warehousing all of the data relating to CESRF and naturally produced spring chinook in the Yakima River. Figure 1 shows the life cycle diagram from a data management perspective. The process begins at Roza Dam with adult returns in the spring of Year 1. A representative subsample of returning natural (unmarked) fish are collected for broodstock and these fish are PIT tagged for tracking through the spawning process. Returning CESRF fish are sampled for marks and biological data. All of these data are entered into an Access database (RozaCollect.mdb) at Roza. This database is backed up weekly and transferred to Nelson Springs for further processing. At the end of the collection season, data from returning CESRF fish are summarized using the recapture database (RozaRecap.mdb). Broodstock fish are transferred from Roza into the adult holding ponds. Mortality data from adult holding is recorded in the spawning database at Cle Elum (CleElumEntry.mdb). The Cle Elum spawning database is linked to Roza collection data via the PIT tag inserted into these fish at collection time. Data from the spawning and early rearing process (adult spawners and egg-to-fry stage) at Cle Elum in the late fall of Year 1 and winter of Year 1-2 are entered into CleElumEntry.mdb as well. A link is created between female spawner identifiers and egg incubation troughs and trays. Fish are generally ponded in April of Year 2 and a link is created between egg/fry incubation trays and rearing ponds. Juvenile growth and survival history data are recorded by pond in a rearing database (Rearing.mdb) from ponding through release from the acclimation sites. This database includes marking data entered in the late fall of Year 2, quality control data in the winter of Year 2-3, and transfer to the acclimation sites in the early part of Year 3. Once fish are released from the acclimation sites, coded-wire tag data for these releases are transferred to the Regional Mark Information System (RMIS) database maintained by the Pacific States Marine Fisheries Commission (PSMFC). Juvenile PIT tag detections from release at the acclimation sites through outmigration through the Yakima and Columbia hydrosystem projects are captured and transmitted to the regional PIT tag database (PTAGIS) at the PSMFC. At the Chandler smolt facility data from PIT detections are combined with Bureau of Reclamation (BOR) flow data and trapping rates to estimate total juvenile smolt passage at Chandler. Fish then enter the ocean phase of their life cycle. Upon adult return to the Columbia and Yakima River systems, harvest data are collected and any marked (CWT or PIT) recaptures are submitted to RMIS and PTAGIS. Harvest monitoring data are sufficient to estimate total harvest by fishery (sport and tribal) and type (marked/CESRF or unmarked/natural). CESRF mark/recapture data from the fisheries and/or Roza Dam sampling can be used to estimate CESRF harvest by pond of release and these data are managed using the RozaRecap database. Adult PIT detections at Columbia hydrosystem projects and at the Roza Dam sampling facility are also captured and submitted to PTAGIS. Once at Roza, the process begins all over except for the naturally spawning escapement. Data from spawning ground surveys (redd counts, marks, and bio-sample data) are recorded in a SpawnTiming (redd count by reach and date) database and a SpawnSurveyMaster (mark and bio-sample data) database. Since these data include data from Geographic Position Sensing (GPS) equipment, Geographic Information System (GIS) maps of spawning locations and densities can be produced.

Figure 2 shows the steps involved in moving these data from the on-site data capture systems to the project's data warehouse on the internet web site. Appendix A gives a description of all the files and data maintained in the spring chinook data warehouse (<http://www.ykfp.org/datawh/>). It

is the intent of the data management team to transition the data warehouse to a more easily maintained database that is accessible via a query-interface on the project website. The team is still consulting with other regional data managers and researching the tools necessary to implement such a system. This is viewed as a high-priority, but long-term task.

In lieu of this task, the data management team has worked with the YKFP Monitoring and Implementation Planning Team (MIPT) to develop a comprehensive summary report of all data relating to the CESRF and spring chinook monitoring and evaluation activities in the Yakima Basin. This report contains a number of tables and figures documenting available data collected about Yakima Basin spring chinook including:

- Adult-to-adult survival,
- Annual run size and escapement,
- Adult traits (e.g., age composition, size-at-age, sex ratios, migration timing, etc.),
- Reproductive statistics (e.g., fecundity, egg size, fish health parameters, etc.),
- Juvenile survival (egg-to-fry, fry-to-smolt, smolt-to-smolt, and smolt-to-adult),
- Juvenile traits (e.g., length-weight relationships, migration timing, etc.), and
- Harvest impacts.

This report is updated annually and included as an appendix in the Yakama Nation's YKFP Monitoring and Evaluation (Project 199506325) annual report.

3.2.2 Yakima River Coho

The data management team has developed and is maintaining Microsoft Access applications to document: adult returns to Prosser, Roza, and Cowiche dams (in conjunction with the video monitoring team); adult broodstock collections at the Prosser Denil trap; adult broodstock holding mortalities at the Prosser hatchery; and radio telemetry data tracking adult returns to their spawning destinations. The team has begun to assemble a database of historical release data from existing paper and electronic records giving: date of release, location of release, number of fish released, CWT code(s), number of PITs in release, source of fish released, external marks, and comments about the release. The team has also worked with project biologists to assemble historical redd count data from available records. The collection of these data will allow a complete gravel-to-gravel (release to adult return) accounting of hatchery and natural coho in the Yakima system and will provide a more easily accessed and reliable data source for additional analyses on Yakima River coho. This is an ongoing task.

3.2.3 Yakima River Fall Chinook

The data management team has developed and is maintaining Microsoft Access applications to document adult returns to Prosser dam (in conjunction with the video monitoring team). The team is also maintaining a tally of annual releases, Chandler smolt counts, adult and jack returns to Prosser, and Marion Drain redd counts. These data are available for the years 1983 to present. The team will develop a more comprehensive system for tracking data relating to Yakima River fall chinook pursuant to guidelines in the fall chinook master plan which is being developed. This is an ongoing task.

3.2.4 Yakima River Steelhead

The data management team has developed and is maintaining Microsoft Access applications to document: adult returns to Prosser, Roza, and Cowiche dams (in

conjunction with the video monitoring team); adult collections and releases at the Prosser Denil trap; adult reconditioning mortalities and releases at the Prosser hatchery (in conjunction with the kelt reconditioning program); and radio telemetry data tracking adult returns to their spawning destinations. The team is also maintaining a tally of annual Chandler smolt counts, adult returns to Prosser, adult harvest, and available redd count data. These data are available for the steelhead return years 1983-84 to present. The team will develop a more comprehensive system for tracking data relating to Yakima River steelhead pursuant to guidelines in the steelhead master plan which is being developed. This is an ongoing task.

3.2.5 Klickitat River Spring Chinook

A comprehensive database of gravel-to-gravel accounting data (hatchery juvenile releases; harvest; estimated total adult returns; hatchery brood and natural spawning escapement; and brood-cohort relationships) has been maintained by WDFW staff out of Vancouver Washington. The Yakama Nation conducts annual harvest and spawning survey sampling/monitoring activities for spring chinook in the Klickitat Basin and these data are communicated to the WDFW for incorporation into this database. The data management team (Klickitat data manager) is assuming responsibility for the further development and maintenance of this database as part of the Klickitat Hatchery transition process. Additional databases will also be developed to accommodate spring chinook activities described in the newly developed Klickitat Basin Master Plan.

3.2.6 Klickitat River Coho

Data on harvest, redd counts, and estimated returns have been developed into a preliminary run reconstruction data set for Klickitat River coho and included in the Klickitat Master Plan. As the Master Plan for the Klickitat Basin is refined, the data management team will focus on developing a more comprehensive system for tracking and managing data relating to Klickitat River coho consistent with monitoring and evaluation needs described in the Master Plan.

3.2.7 Klickitat River Fall Chinook

Data on harvest, redd counts, and estimated returns have been developed into a preliminary run reconstruction data set for Klickitat River fall Chinook and included in the Klickitat Master Plan. As the Master Plan for the Klickitat Basin is refined, the data management team will focus on developing a more comprehensive system for tracking and managing data relating to Klickitat River fall Chinook consistent with monitoring and evaluation needs described in the Master Plan.

3.2.8 Klickitat River Steelhead

Data on harvest, redd counts, and estimated returns have been developed into a preliminary run reconstruction data set for Klickitat River steelhead and included in the Klickitat Master Plan. The Yakama Nation conducts annual harvest and spawning survey sampling/monitoring activities for steelhead in the Klickitat Basin but the spawning survey data are not comprehensive. As the Master Plan for the Klickitat Basin is refined, the data management team will focus on developing a more comprehensive system for tracking and managing data relating to Klickitat River steelhead consistent with monitoring and evaluation needs described in the Master Plan. This work will be done in cooperation with the WDFW office in Vancouver, Washington which also maintains a data set on Klickitat Basin steelhead.

Figure 1. Yakima River Spring Chinook Data Flow.

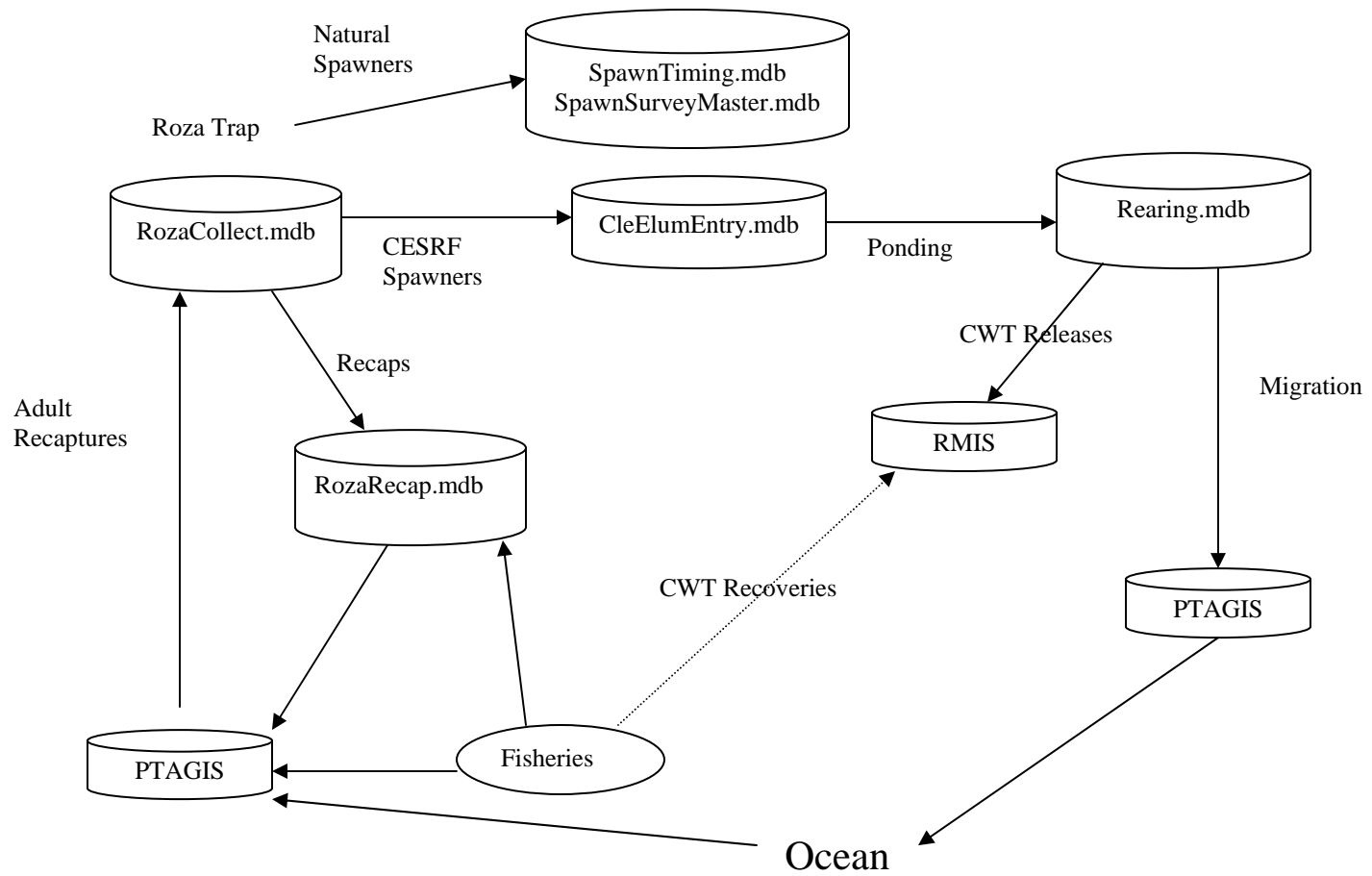
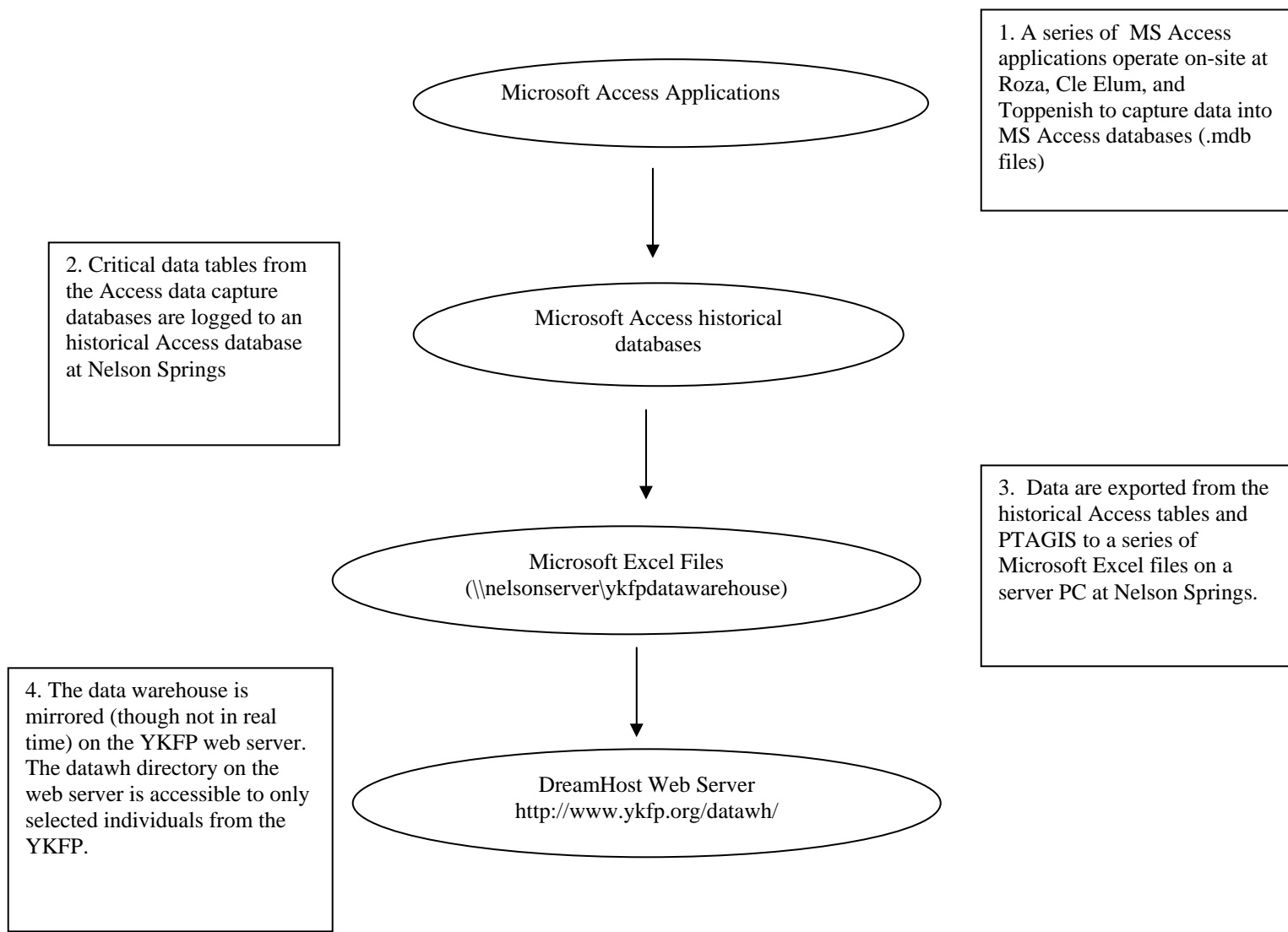


Figure 2. Yakima River Spring Chinook Data Capture and Archiving.



3.3 Genetics: DNA samples (results of electrophoretic analyses).

These data are maintained by other agencies (mainly the WDFW and to some extent, the National Oceanographic and Atmospheric Administration Fisheries [NOAA Fisheries]). For the Yakima, these data sets include several years of data on spring chinook and a growing body of steelhead information. A DNA sample database for Yakima River coho is being developed from samples taken in recent years. For the Klickitat these data sets include electrophoretic analysis data for steelhead, spring chinook (hatchery and natural production), and summer/fall chinook (natural production). The YN has also contracted with the Columbia River Inter-Tribal Fish Commission (CRITFC) to run 320 DNA samples of steelhead smolts and a few wild adults in the Klickitat River. These data were collected in 2000-2002. Preliminary analysis of these data has concluded. There is a need in the long-term to integrate these data sets into the data that eventually will be, or should be, accessible via the YKFP website.

3.4 Habitat parameters: ecosystem diagnosis and treatment (EDT) data.

3.4.1 Yakima River

The YKFP contends that EDT and All-H Analyzer (AHA) computer modeling accurately integrates habitat quantity, quality, and life history data and can be used to evaluate alternative enhancement strategies. It is the present intent of the YKFP to continue to use EDT and AHA modeling throughout the project to: model the statistical power of reproductive success study designs, domestication study designs, treatment/control experimental designs, etc.; design complementary supplementation and/or habitat enhancement programs for targeted stocks; diagnose the fundamental environmental factors limiting natural production; and to estimate relative improvements in production attributable to alternative enhancement strategies. These data and associated models will be maintained by YKFP project staff in cooperation with Moberg, Jones, and Stokes. The data management team recommends that the policy group give guidance as to whether there is a need in the long-term to integrate EDT and AHA modeling data into the data that eventually will be, or should be, accessible via the YKFP website.

A database of field habitat survey data for some of the smaller creeks in the lower Yakima River watershed was also produced from existing Quattro data files as described in 3.4.2 below.

3.4.2 Klickitat River

Data from field habitat surveys conducted in the Klickitat River Basin from 1996 to present were originally stored in Quattro spreadsheet forms. This format did not allow automated queries of the historical data. The MS Access habitat survey system developed by the Northwest Indian Fish Commission was reviewed and determined not to be flexible enough to meet long-term requirements for YKFP habitat survey data storage and retrieval. The existing Quattro data were reviewed and a MS Access database was designed and developed to store existing habitat survey data and to input new data. Routines were developed to load data from the existing Quattro files into this database. This database is now being routinely maintained and updated out of the Klickitat Basin Wahkiacus field office.

The habitat survey data in this database will feed directly into EDT and AHA modeling efforts for the Klickitat Basin. The MS Access database of Klickitat habitat survey information has also

been successfully integrated as a front-end to a Geographic Information System (GIS) database. It is now possible for project personnel to produce maps showing, for example, all of the stream segments in the Klickitat Basin having a canopy cover measurement less than a certain value. These kinds of maps can be extremely valuable in making decisions regarding priorities for habitat improvement projects. They also have many other valuable uses.

The data management team will continue to work with field biologists in the Klickitat Basin to maintain and upgrade this database.

The Klickitat Database management team has also produced Access databases to store and manage stream temperature and sediment sampling data from the Klickitat. These databases are being reviewed for applicability to Yakima Basin activities.

3.5 Ecological interactions: predator/prey relationships, capacity issues, etc.

Predation and ecological interactions data are being collected cooperatively by both of the YKFP's co-management agencies, the WDFW and the YN. Both data sets are being stored primarily in Microsoft Access databases, but each agency is maintaining a separate database. The data management team has reviewed these databases for consistency and compatibility.

For the YN Access database, the data management team has developed data entry forms and tables to standardize and warehouse data from Yakima River predation studies. The YN database now contains all of the data for monitoring seasons from 1999 to present. A more flexible query system was also developed within this database, and the database framework is being expanded to include analysis and reporting functions.

It is probable that the project could benefit by merging the WDFW and YN databases in the future. This would promote data and software sharing, data compatibility, comprehensive data analyses, etc. However, a process has not yet been identified for doing so. This will continue to be pursued as a lower-priority data management task.

Downstream detections of PIT-tagged coho used in predator avoidance tests were submitted to PTAGIS and queries were developed to assist in the analyses of these data.

3.6 Digital photographs

The YKFP's CESRF spring chinook program is generating gigabytes of digital photographs of broodstock spring chinook that are spawned at the CESRF. Biologists determined that photographs of fish at Roza Dam were not of sufficient quality to use for morphometric analyses and Roza Dam photos were discontinued in 2003. The project is also generating digital photographs for other purposes. The data management team is researching ways to meet the long-term storage and dissemination requirements for these digital photographs. The team tried posting the 2001 brood photographs on our public website, but found that data storage costs through our site provider would be too high for this kind of infrequently retrieved data. The team is evaluating some third-party photo compression software (MrSid Photo and MrSid Server) to reduce the storage requirements or improve availability of these compressed images by making them available to a web browser. A test batch of photographs in JPEG format reduced storage requirements by 80%, with no apparent loss of data. The data management team will continue to pursue this need as a lower-priority task.

3.7 Technical reports and publications

The WDFW has provided the data management team with a CD of technical reports and papers published by the WDFW Ecological Interactions team. The data management team has

developed an area on the project web site, available to the general public, where links to project reports and publications are available for others to view and download. Other reports and publications (either historical or future) will be posted to this portion of the website as they become available. The team is continuing to develop and maintain a database that stores the information necessary to allow quick retrieval of these YKFP technical reports and publications from various locations via the internet.

4. Hardware/Software Platform

Based on a review of available options, the data management team determined that Microsoft Windows-based PCs, Microsoft network software, and Microsoft Access database management (in combination with Visual Basic programming modules) software should be used in the first phase of implementing a YKFP information system to transition from existing data structures to a system of networked relational database structures. Microsoft Access has allowed the data management team to begin implementation of this ISMP in the most timely fashion. This has been critical to developing and maintaining the integrity of project data. Other factors supporting this recommendation are:

- consistency with YKFP / BPA use of other MS products (Word, Excel, etc.),
- ease of integration with existing data (primarily Excel), and
- familiarity of the data management team and other project scientists with Microsoft products and Access.

Given the large volume of users working with Microsoft products and the fact that a product already exists to extend the functional capacity of Access (MS SQL Server), the data management team is confident that Access can meet the needs of the YKFP at least for the foreseeable future. This determination to use Microsoft Access should be evaluated on a regular basis to ensure that it continues to meet long-term project needs. Alternative products should be investigated and implemented as required.

5. Project Network Overview

Figure 3 presents an overview of YKFP data management networking requirements. Project data will be stored in a number of host/server databases and at a number of locations. For example, ecological interaction and habitat data might be stored in Ellensburg, with adult survival and return, adult spawning, and cohort monitoring data stored at project headquarters (currently Nelson Springs), and genetics data stored in Olympia. Historic data on the host/server databases will be updated on a regular basis with in-season data collected from satellite facilities (e.g., Cle Elum, Roza, Prosser/Chandler, Toppenish, etc.). Data will be retrieved from the host/server databases via a query interface on the project web site. Web site users would, of course, have read-only access to project data and access to certain data may be limited to subsets of users.

6. Project Web Site

The data management team is currently contracting with DreamHost to host the YKFP web site (www.ykfp.org). As noted previously, the efforts of the data management team to date have focused on building and maintaining a series of Access database systems for capturing project data. The team has generally not made progress on the development of an automated web-based data retrieval system tied directly to the data in these Access databases due to the amount of time required for the current data management team to fulfill existing duties and to learn and develop

these tools. However, Prosser and Roza dam count data have been linked by an open database connection (ODBC) to the University of Washington's Data Access in Real Time (DART) system, such that retrieval of current and historical daily counts at these facilities are now accessible via DART's online data retrieval system (see 8 below). As an interim strategy for other YKFP data, the team developed an organized system of Microsoft Excel files stored in the web site's data warehouse. These Excel files, for the most part, contain raw data dumps of data maintained in existing Access databases (see Appendix A). In addition, the data management team has played an integral role in the development of a comprehensive report relating to YKFP spring chinook work (see 3.2.1). Figure 4 is a graphical display of the data management processes for serving these and other project related data via the YKFP web site.

For the long-term, the data management team is continuing to consult with other regional data managers regarding, and to research options for implementing, a web-based data retrieval system that will be interfaced directly to existing Access databases. This is likely to be a 3-to-5-year project that would require hiring additional staff with expertise in the tools necessary to accomplish this task. Therefore, accomplishment of this goal is contingent on budgetary constraints.

7. Geographic Information Systems

The long-term vision is that a lot of key project data will be integrated into a GIS system and will be available for viewing spatially, e.g., on a map. Some examples might include: Yakima River Basin spring chinook redds overlaid with high-impact predator densities and locations, Klickitat River all stock spawning reaches, Klickitat River EDT Spring chinook "high priority" Restoration/Preservation reaches, etc. Significant progress is being made in this area.

8. Dam Counts

The project maintains systems to capture counts of adult returning fish at Prosser, Roza, and Cowiche dams on the Yakima River. The data management team worked with staff at the University of Washington to develop routines for loading Prosser and Roza adult count data into the regional Data Access in Real Time (DART) system. This project has been completed and all available Yakima River historical dam count data are now loaded into the DART system. We continue to update these data as necessary (including loading of current year counts) to make sure that historical data are accurately loaded and accessible via the DART system. DART access to dam count data is in addition to access already provided via the ykfp.org web site. The data management team will continue to investigate the utility and feasibility of loading juvenile counts at Chandler to similar regional systems.

9. Regional Collaboration and Coordination

There has been a lot of emphasis within the region on developing better methods and systems to make data from existing projects more easily accessible to regional scientists and decision makers. We believe the Yakima-Klickitat Fisheries Project (YKFP) and many other projects are indeed providing much of the data and information being sought at the regional level. For example, YKFP efforts to make data, results, and information from Yakima Basin projects broadly accessible to the region include the following:

- Juvenile passage estimates (Prosser/Chandler), adult return counts (Prosser and Roza dams), redd count summaries, run size forecasts, and other project data are routinely updated and posted to the www.ykfp.org web site.

- Adult return counts to Prosser and Roza dams are linked via an open database connection (ODBC) to the University of Washington’s Data Access in Real-Time (DART) web site and updated regularly. Available historical counts for these dams have also been loaded to DART.
- Data are routinely uploaded to regional centralized databases. Passive integrated transponder (PIT) tagged releases and adult detections at Prosser and Roza are loaded to the PIT tag information system (PTAGIS). Coded-wire tagged (CWT) releases are loaded to the regional mark information system (RMIS). Run size, escapement, redd count, and other data are loaded to Streamnet.
- Annual reports are posted to the Bonneville Power Administration’s (BPA) environment, fish, and wildlife “reports, documents, and technical publications” web page. For the 2004-05 fiscal year, over 760 pages of information detailing data and results from the YKFP monitoring and evaluation project (199506325) were posted in annual reports.
- Data and results are presented at an annual science and management conference.
- Data and results are published in the peer-reviewed literature as they become ripe. Over the past year, the YKFP has generated at least 10 technical manuscripts that are either in final internal review, in peer review, or have been accepted for publication and are in press.

Due to the large volume of data being generated and the complex nature of subbasin-wide, multi-species efforts such as the YKFP and many other projects, we recognize that the data and information are not necessarily reported in a manner that allows easy synthesis and use of the information at the regional scale to answer key questions and assist in prioritization of projects. Regional frustration over these issues (e.g., see Independent Scientific Review Panel’s programmatic comments on 2007-2009 project proposals – Council Document ISRP 2006-4a) have led to the establishment and funding of Pacific Northwest Aquatic Monitoring Project (PNAMP), Collaborative Systemwide Monitoring and Evaluation Project (CSMEP), and Northwest Environmental Data Network (NED) efforts to address them. In addition, the Northwest Power and Conservation Council recently issued a proposal to establish a Columbia Basin Data Center to develop an online data portal, identify data gaps, oversee data quality, and propose data standards.

The Yakama Nation has and will continue to participate in and support these many regional forums that are addressing data management issues. Whether the region decides on a distributed data network (such as the ODBC link between YKFP and DART), or a set of centralized databases (such as PTAGIS, RMIS, and Streamnet), the YKFP will continue to link or load its data to these regional data bases and networks. In addition, the Yakama Nation provides the following recommendations:

- The PNAMP, CSMEP, and NED efforts need to be more focused on producing usable products. For example:
- It is our understanding that PNAMP would be developing an inventory of regional monitoring and evaluation projects that would provide a “who, what, where, and how” summary of basin-wide RM&E projects. This product would be very useful as both a networking and management tool at all scales of management throughout the region. What is the status of this product?
- CSMEP has already developed a useful database of what RM&E data are being collected as well as a subjective assessment of the quality of these data. CSMEP should extend this effort and focus on producing a synthesis of regional RM&E efforts by topic. The synthesis should be able to give answers to questions such as the following: How many projects in the Columbia Basin are addressing juvenile passage issues, supplementation,

etc.? What are the major findings of the projects to date? A review of the synthesis should allow the identification of major questions (data gaps) that are not being adequately addressed.

- Rather than rehashing the issues and trying to define a philosophically perfect data management solution for the Columbia Basin, the NED should focus on extending the existing practicality and functionality of regional databases like DART, PTAGIS, RMIS, and Streamnet. What works well about these systems? What doesn't work? How can/should these databases be improved to provide more utility to the region? What are the highest priority data sets not presently available at a regional level? What is the best solution for making these data sets available in a short amount of time? As these basic questions are answered, products that need to be constructed would be identified, and a primer describing how the various regional databases can and must be used to store project data could be developed and distributed to all projects.
- If the above work were identified by the Council and BPA as high-priority, specific deliverables for these existing projects, we believe this would go a long way toward alleviating the need for the Columbia Basin Data Center as identified in Council document 2006-7. In lieu of a Columbia Basin Data Center, we recommend funding an innovative PISCES-like software team that would be tasked with developing a customized GOOGLE-like search engine (or other products) designed specifically to search the BPA environment, fish, and wildlife "reports, documents, and technical publications" web site to assist regional managers, reviewers, and scientists in easily and quickly identifying the information they need from the gigabytes of historic project information stored in the BPA archives.

Even with all of the above, it may be that information from large projects such as the YKFP is better communicated through a conference format, such as the Yakima Basin Science and Management conference hosted annually by the YKFP or topic-specific workshops such as the supplementation workshop recently hosted by CRITFC. Indeed the ISRP recognized this when they recommended a follow-up supplementation workshop and that large projects such as the YKFP "*be separated from the standard proposal review process and reviewed in more depth, including site visits and presentations*" (Council document ISRP 2006-4a).

Figure 3. Draft YKFP Data Network Diagram.

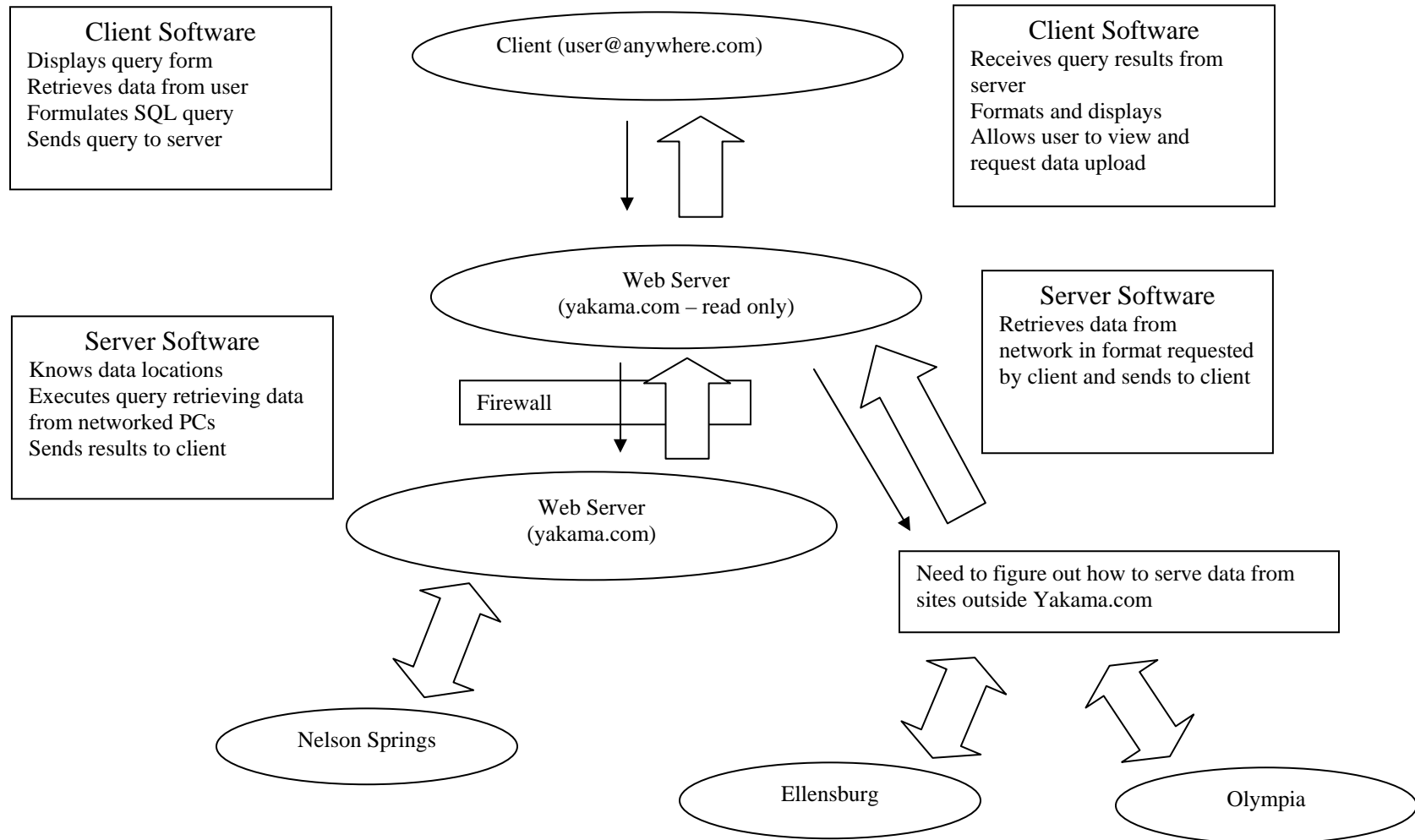
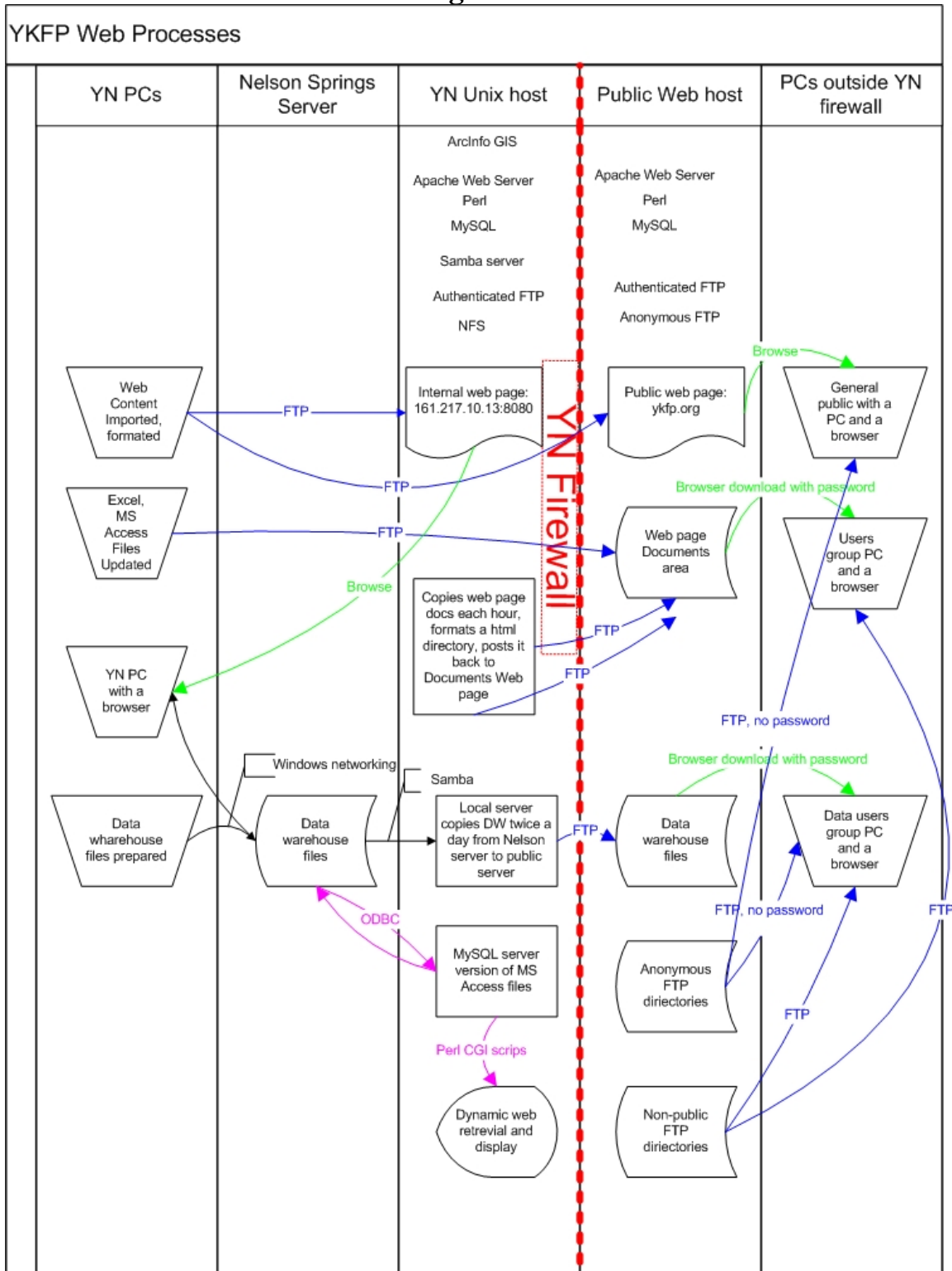


Figure 4.



Appendix A. Layout for Interim Data Warehouse, Version 1.0

Directory / File / Field

\\YKFPDataWarehouse\CESRFBroodYearAccounting

Brood Collection and Spawning

RozaCollectionData (Brood fish collected at Roza; from qryDWRozaCollect in
\\history\broodstock.mdb)

RozaDate, date of collection at Roza

RozaId, unique id given to fish at Roza

Carcassno, carcass number given at spawn time at CE Hatchery if fish used for brood

PITTag, PIT tag id inserted into brood fish at Roza

JVPITTag, Pit Tag number of tag inserted into this fish when it was a juvenile (if recap)

Status, information about the disposition of this fish, e.g. BRD=collected and used for brood unless a mortality or used in spawning channel, RLS=released and there should be an entry in ReleaseData, etc.

HWFlag, hatchery or wild indicator

Age, age of fish based on scale sample taken at Roza

Sex, sex of fish as guessed by Roza personnel at time of collection

Forklength, fork length at collection time in centimeters

POHlength, Post-eye to hyperal length at collection time in centimeters

Weight, body wt at collection time in kilograms

Scalesmpl, scale card and slot number for scale samples taken from this fish

Injection, Injection data about this fish - type and amount (mls)

Comments, other collection remarks about this fish

PhotoID, name of file given to photo image of this fish (as stored on CD)

Mort, flag indicating whether fish was a mortality or not, if so entry in MortalityData

Channel, flag indicating whether fish was used in spawning channel or not, if so entry in ChannelData

SpawnerData (Production spawners at Cle Elum; from tblSpawner in
\\history\broodstock.mdb)

Carcassno, carcass number given at spawn time (true sex is first character of carcassno)

PITTag, PIT tag id inserted into brood fish at Roza

Bodywt, body weight at spawn time in kilograms

Forklgh, fork length at spawn time in centimeters

POHlgh, Post-eye to hyperal length at spawn time in centimeters

MEHlgh, mid-eye to hyperal length at spawn time in centimeters

Comments, other spawn remarks about this fish

DNASample, DNA sample id assigned to this fish

CWT, CWT code found in this fish (if dug and known)

Radio, Radio tag channel and code (if any) found in this fish (format xx-xx or xxx-xxx)

Photo, File name of spawner photograph of this fish (as stored on CD)

ChannelData (Channel spawners at Cle Elum; from tblChannelData in
\\history\broodstock.mdb)

SpawnDate, date this fish was placed in spawning channel

DNASample, DNA sample id assigned to this fish

HorW, Hatchery or Wild Indicator

Sex, true sex of this fish

Length, fork length in mm/cm (at time of transfer to channel)
Wt, weight in kilograms (at time of transfer to channel)
PITTag, PIT tag id inserted into brood fish at Roza
PETTag, Peterson disk tag id given to this fish prior to transfer to channel
TransportTime, approximate time fish was transported from holding pond to channel
Condition, Condition of fish prior to placement in the channel
ChannelSection, Channel section identifier
TimeofCollection, Approximate time this fish was sampled, peterson tagged, and transferred to the channel
EggsLost, Number of eggs lost during sampling and transfer of fish?
EggsRetained, Number of eggs retained after fish spawned in channel
DeadBodyWt, Body weight of carcass after spawning
DeadForkLength, Fork length of carcass after spawning
DeadDate, Date carcass sampled
RetainedTestes, Weight (?) of retained testes after spawning
TestesColor, Color of testes from carcass sample
CWTPlacement, Comments regarding tag location and type found in carcasses of hatchery channel fish
Comments, other channel remarks about this fish

MortalityData (Prespawn/sort mortalities at Cle Elum; from qryDWMortality in
\\history\broodstock.mdb)

RozaDate, date of collection at Roza
RozaId, unique id given to fish at Roza
PITTag, PIT tag id inserted into brood fish at Roza
Sex, true sex of this fish
MortDate, date mortality was recorded (fish may have died before this date)
MortCause, cause of death
Comment, other mortality remarks about this fish

ReleaseData (Brood fish not used and released from Cle Elum near spawn time; from
tblRelease in \\history\broodstock.mdb)

RozaDate, date of collection at Roza
RozaId, unique id given to fish at Roza
PITTag, PIT tag id inserted into brood fish at Roza
ReleaseDate, date fish was released back to the Yakima River from CESRF
RadioTag, true/false, if true a radio tag was in fish at time of release

FemaleData (production brood females at Cle Elum; from qryDWFemales in
\\history\broodstock.mdb)

Carcassno, carcass number given at spawn time
HWFlag, hatchery or wild indicator
SpawnDate, date this fish was spawned
Totaleggmass, Weight of all the eggs taken from this female (in grams)
Samplewt, Weight of a sample number of eggs taken from this female (in grams)
Samplenoeggs, Number of eggs in sample from this female
Nocrosses, Number of full crosses (number of aliquots) for this female
Egglossskein, Number of eggs left in the skein
Egglosssmp, Number of eggs taken for bio-sampling
Egglossbad, Number of eggs discarded as "bad"
Egglossspill, Number of eggs spilled and unusable for spawning
BKDFlag, Was female flagged as BKD positive?
BKDRank, ELISA rank denoting BKD risk based on USFWS analysis of ovarian fluid samples
Comment, other remarks specific to spawning/egg take of this female

CrossData (production brood at Cle Elum; from tblCrosses in \history\broodstock.mdb)
FemaleCarcassno, carcass number of female in cross
MaleCarcassno, carcass number of male in cross
Crosspercent, percent of aliquot fertilized by this male
ExperimentalFlag, Was this an experimental cross? If so, 200 eggs in this cross

MaleMotility (1998 brood data only as analyzed by K. Hatch; from tblMotility in
\history\broodstock.mdb)
Carcassno, carcass number of male
Motility, Percentage of sperm observed to be motile

GeneralMetaData (general meta data about this brood; from tblComment in
\history\broodstock.mdb)
SpawnDate
Comment

Eggs to Ponding

FemaleEggCounts (production brood females at Cle Elum; from qryDWEggCounts in
\history\broodstock.mdb)
Carcassno, carcass number given at spawn time
HWFlag, hatchery or wild indicator
UnfertilizedEggs, Number of unfertilized (dead) eggs at eyed-egg shock
TroughID, Incubation trough id for this female's egg ISO-bucket in format
yyyyTnnn, where yyyy is brood year
HeathTrayID1, Incubation heath tray id for this female's live eggs in format
yyyyHnnnnn, where yyyy is brood year
HtId1Eggs, Number of live eggs in tray 1
HeathTrayID2, Incubation heath tray id for this female's live eggs in format
yyyyHnnnnn, where yyyy is brood year
HtId2Eggs, Number of live eggs in tray 2
ShockTempUnits, Temperature units at shock time
Comment, other remarks specific to spawning/egg take of this female

Egg Count Correction Data (Hand Count vs. Machine Count data)
<to be developed>

HeathTrayData (production fish at Cle Elum; from qryDWHeathTrayData in
\history\rearing.mdb)
HeathID, Incubation heath tray id
LiveEggs, Number of live eggs in this tray
FryLoss, Total number of fry lost in this tray prior to ponding
PondId, Cle Elum Raceway pond these fish were placed into
FishperPound, Average (for several trays) of fish per pound at ponding
TempUnits, Average (for several trays) temp. units at ponding
Comment, Shock/Fry picking comments

Ponding to Release (includes marking of brood)

BroodTransferandReleaseSummary (pond by pond transfer and release accounting; from
tblSiteBYXref in \history\rearing.mdb)
BroodYear,

SiteID, Cle Elum Pond Id
Species, "sck" = spring chinook
Treatment, OCT or SNT
SiteXref, Acclimation Site/Pond Id
PondIn, estimated number of fish transferred from Heath Trays into Cle Elum pond
PondDate, Date fish were placed into Cle Elum pond
AcclIn, estimated number of fish transferred from Cle Elum pond into Acclimation site raceway
AcclDate, Date fish were placed into Acclimation site pond
 AcclOut, Number of fish estimated to be alive in Acclimation site raceway available for release (total tagged less total morts)
 PITOut, Number of PIT tagged fish estimated to be alive in Acclimation site raceway available for release (Original number PIT tagged less known PIT morts, NOT exit detection counts)
FirstVRDate, Date screens were pulled at acclimation site (date of 1st volitional release)
LastVRDate, Date fish were forced out of acclimation site (date of last volitional release)

GrowthandSurvival (monthly fish on hand, mortality, and weight data; from qryDWGrowthandSurvival in \history\rearing.mdb)

BroodYear,
SiteID, Cle Elum Pond Id
Treatment, OCT or SNT
InvDate, Month end inventory date
OnHand, Number of fish estimated to be on hand in this pond as of InvDate
Pounds, Estimated total weight of fish on hand in this pond as of InvDate
Morts, Number of documented mortalities for this pond for month ending on InvDate
FoodFed, Total Pounds of food fed for this pond for month ending on InvDate
AvgWt, Average number of fish per pound for this pond for month ending on InvDate
GainPounds, Estimated total pounds of weight gained by all fish in pond since previous InvDate
SiteXref, Acclimation transfer site and pond Id for these fish

PondLgthSamples (Length histograms for monthly sample data; not yet available)

SiteID, Cle Elum or Acclimation site and pond id
SampleDate, Date of length samples
SamplerID, Initials of head sampler or data entry person
FishLength, Fish length in centimeters
FishNumber, Number of fish in this length strata

PondTemperatures (Monthly average, min, max pond temperature data as reported by CH2M

Hill monitoring equipment and software; not yet available)

SiteID, Cle Elum or Acclimation site and pond id
MEDate, Month-end date
AvgTemp, average pond temperature for the month
MinTemp, minimum pond temperature for the month
MaxTemp, maximum pond temperature for the month

PITTagFileData (from JM/Ptagis query)

H_header_Name, Name of file containing PIT tag data submitted to PTAGIS
H_brood_year, last two digits of brood year
H_raceway_transect, Cle Elum Pond Id
NumberTagged, Number of fish in this pond which were PIT tagged
Dotouts, Number of fish in this pond which morted at some point prior to release
 EstimatedNumberReleased, Estimated number of PIT-tagged fish in this pond released from accl. sites
H_message, additional tagging and ponding data regarding this release

**PondMarkData (pond tagging data; from the table DWPondMarkData created by
modLoadDWPondMarkData in \history\rearing.mdb)**

SiteID, Cle Elum Pond Id
StartDate, Date that marking started in this pond
EndDate, Date that marking ended in this pond
CWTCODE, Coded-wire tag code used for fish in this pond
TagType, Type of CWT used for fish in this pond
NumberTagged, Number of fish in this pond which were CWT tagged
NumberSorted, Number of sorts/culls from this pond
OCTSNT, denotes left or right Cheek or elastomer eye for Oct/Snt designation
BodyLocation, CWT body location
ElastomerColor, color of elastomer eye tag
Comments, remarks related to marking

QCData (BY97-99 data from CK/SS;BY00 data from tblQCData in BY2000 Rearing.mdb)

ChronoId, Chronological id, e.g., order in which this fish was QC sampled
SiteID, Cle Elum Pond Id
SampleDate, Date of QC samples
SamplerInitials, Initials of head of QC sample team
PITTag, PIT tag id of fish if detected
Length, fork length (millimeters) of this fish if sampled
Weight, Weight (grams) of this fish if sampled
CWTSnout, True/False to denote whether a CWT was found in the snout
ElastomerTag, True/False to denote whether an elastomer eye tag was present
BodyTag, True/False to denote whether a body CWT tag was present
AdClip, True/False to denote whether the adipose fin was clipped
Comments, other remarks about this fish

QCSummary (BY97-99 data from CK/SS;BY00 data from tblQCSumm in BY2000
Rearing.mdb)

SiteID, Cle Elum Pond Id
ElastomerEye, denotes left or right Cheek or elastomer eye for Oct/Snt designation
ElastomerColor, color of elastomer eye tag for this pond
BodyLocation, CWT body location
TagEndDate, Date that marking ended in this pond
QCDate, Date that pond was sampled for quality control
Ntot, the total number of fish in this pond sampled for quality control
Nphys, the number of QC'd fish in this pond sub-sampled for length and weight
AvgLen, the average fork length (mm) of QC fish sub-sample
AvgWt, the average weight (g) of QC fish sub-sample
PITTagCount, the count of fish in this QC sample which had PIT tags detected
CWTSnoutCount, the count of fish in this QC sample which had CWT detections
in the snout
AdiposeClipCount, the count of fish in this QC sample which had an adipose fin clip
ElastomerTagCount, the count of fish in this QC sample which had elastomer eye
tags present
BodyTagCount, the count of fish in this QC sample which had CWT tags detected
in a body location

Juvenile Outmigration (from acclimation sites to Bonneville)

Available via migration year on existing web site, see Graphs, Tabular Details, and OCT/SNT Juvenile Releases in:

\Juvenile Counts\Chandler Juvenile Passage

Chandler and Roza length/weight sample database (data need to be compiled into single database by migration year). Need these data for hatchery/wild length at release comparisons.

ChandlerYYSamples (Chandler juvenile length and weight samples; from tblIndividual in DL ChandlerDataYYYYFinal mdb files)

WaterYear, juvenile outmigration year
CatchDate, date this fish was sampled at Chandler
SpeciesCode, species designator (hatchery/wild indicator is first character of this code)
ForkLength, fork length (millimeters) of this fish
Weight, Weight (grams) of this fish
Remarks, other remarks about this fish

Adult Detections

RecapSumYY (Roza recapture summary tables where YY=brood year; from \AdultSurvival\BYyyyy\RecapSum.xls files)

Large excel file(s) containing summaries of adult recapture data for a given CESRF brood by age, treatment type, acclimation site, and pond. This file summarizes data in RozaYYRecap files for all age-class returns for a given brood year.

(by Age)

ReportedCWTRecoveries (includes reported CWT recoveries from ocean, lower Col. R. and Yak. R. fisheries; from RMIS CWT Recovery queries)

... (dump of entire PSC format into comma-separated value **text** (.txt) file, can be linked by CWT to brood year, pond, and treatment using PondMarkData file above)

BonnPITRYyyyy (Bonneville PIT detections from PTAGIS adult return query where RYyyyy = return year; from qryDWBonnPITRYyyyy in BroodYearyyyy\Roza\RozaRecap.mdb)

Tag ID, PIT tag code
Fish Type, species description
Tag Site, PTAGIS code for site where fish was tagged
Release Site, PTAGIS code for site where fish was released
Date Released, date the fish was released as entered into PTAGIS
Date Detected, date of detection at Bonneville Dam
AcclID, Acclimation site and pond ID
Treatment, OCT or SNT

GraPITRYyyyy (Lower Granite PIT detections (Snake R. strays) from PTAGIS adult return query where RYyyyy = return year; from qryGRAYakimaR in BroodYearyyyy\Roza\RozaRecap.mdb)

Tag ID, PIT tag code
Fish Type, species description
Tag Site, PTAGIS code for site where fish was tagged
Release Site, PTAGIS code for site where fish was released

Date Released, date the fish was released as entered into PTAGIS
Date Detected, date of detection at Bonneville Dam
AcclID, Acclimation site and pond ID
Treatment, OCT or SNT

RozaYYRecap (Roza spring chinook adult recapture data for return year YY; from
qryDWRozaRcp4 in \history\AdultRecaps.mdb)

RozaDate, date of recapture at Roza
RozaId, unique id given to fish at Roza
JVPITTag, Pit Tag number of tag inserted into this fish when it was a juvenile
Status, should generally be RCP for recapture, if BRD denotes wild PIT recap
Age, age of fish based on scale sample taken at Roza
Sex, sex of fish as guessed by Roza personnel at time of recapture (P=precocious, J=Jack)
Forklength, fork length at recapture time in centimeters
POHlength, POH length at recapture time in centimeters
Weight, body weight at recapture time in kilograms
Scalesmpl, scale card and slot number for scale samples taken from this fish
DNASample, DNA Sample ID for this fish if DNA sample taken
Comments, other remarks about this fish
PhotoID, name of file given to photo image of this fish (as stored on CD)
CWTSnout, Was a CWT found in the snout?

Treatment, denotes left or right Cheek or elastomer eye for Oct/Snt designation if
detected/present

BodyLocation, CWT body location if tag detected
ElastomerColor, color of elastomer eye tag if present

YakRYYHarvestRecap (Yakima River sport and tribal harvest samples for return year
YY; from qryDWHarvRcp4 in \history\AdultRecaps.mdb)

HarvestDate, Date of harvest
Fishery, S=sport or T=tribal
Age, age of fish from scale sample if taken
Sex, sex of fish if known (J=jack)
JvPITTag, PIT tag code from fish if a recapture and tag was detected/recorded
Forklght, fork length in centimeters if measured
Weight, weight of fish in pounds as guessed by tribal monitors
WDFWCardCode, Scale card id and slot number from WDFW scale cards
Comments, other remarks
CWTSnout, Was a CWT found in the snout?

OCTSNT, denotes left or right Cheek or elastomer eye for Oct/Snt designation if
detected/present

BodyLocation, CWT body location if tag detected
ElastomerColor, color of elastomer eye tag if present

YakRYYSpawnerRecap (Yakima River spawning ground recaptures for return year YY;
return year 2000 data from table '2000SpawnCWTRecovs' in
\AdultSurvival\SpringChinook\YakimaSpawnSurveyMaster.mdb, other years not
yet available)

Date, Date of spawning ground recovery
River, River (Yakima)
Reach, River reach description
CWT, CWT code(s) of fish recovered
Comments, other remarks about this fish
NewCWT, CWT code in 6-digit format matching other parts of database

CLEId, Cle Elum pond number which this fish is from
AcclId, Acclimation site and pond number which this fish is from
Treatment, OCT or SNT

YKFPDataWarehouse\Yakima River Data Syntheses

SpCkDataBase (Run reconstruction, brood tables, and forecasting data; from
\AdultSurvival\SpringChinook\SpCkDataBase.xls)

Summary of historical Yakima river spring chinook returns in several tables contained within a large Excel file. Some meta-data included as comments by cell within these tables. Needs to have additional historical meta-data added and a documentation table added which describes where all the data come from.

Harvest

HarvesttoColRMth (Summary of harvest by wild, hatchery, Oct, and Snt Col. R. mth to Escapement; from \AdultSurvival\SpringChinook\HarvesttoColRMth.xls)

Return Year

Col. R. Mth Run Size (estimated by backing estimated Yak. R. mth run size down river using U.S. v Oregon TAC estimates for Bonn. Through McNary passage rates and Col. R. mth to McNary harvest rates)

ColRMthtoBONHarvest, estimated using TAC harvest rate (assumes Yak. R. fish harvested at same rate as all upriver spring chinook)

PassageLossBONtoYakRMth, estimated using TAC passage loss rates

BONtoMcNaryHarvest, estimated using TAC harvest rate (assumes Yak. R. fish harvested at same rate as all upriver spring chinook)

YakimaRiverMthRunSize, from Yakima River run reconstruction

Harvest of YakR fish from ColRMth to YakRMth

Total

Wild

CESRF (estimated using YakRMth proportions from Yak. R. run reconstruction)

OCT (estimated using Roza detection data for all age classes combined)

SNT (estimated using Roza detection data for all age classes combined)

Harvest of YakR fish from YakRMth to Esc

Total

Wild

CESRF (from inriver sampling data)

OCT (estimated using inriver sample data proportions)

SNT (estimated using inriver sample data proportions)

Sample Percentages

OCT (total number of OCT fish in YakR harvest samples)

SNT (total number of SNT fish in YakR harvest samples)

Sample Rate (number of fish in YakR harvest samples as a percent of total

CESRF harvest)

YakRHarvestEstimates (Weekly harvest estimates for Yakima R. tribal [and sport?] fisheries;
deferred – necessary??)

Location, location of monitor sample

WeekOf, starting date for week of monitoring data

Hasck, estimated harvest of hatchery adult spring chinook for this week

Hjsck, estimated harvest of hatchery jack spring chinook for this week

Wasck, estimated harvest of wild adult spring chinook for this week
Wjsck, estimated harvest of wild jack spring chinook for this week
Hsth, estimated harvest of hatchery steelhead for this week
Wsth, estimated harvest of wild steelhead for this week

Daily Dam Counts by Return Year

ProsserYYSpCk (Prosser spring chinook counts for return year YY; from
tblSpringCounts in \damcounts\ProsserAdult.mdb)

Date, passage date
Dam, currently blank
<>, column assigned by access for invalid species code count
hasck, daily count of hatchery adult spring chinook
hjsck, daily count of hatchery jack spring chinook
wasck, daily count of wild adult spring chinook
wjsck, daily count of wild jack spring chinook
uasck, daily count of unknown adult spring chinook
ujscck, daily count of unknown jack spring chinook

RozaYYSpCk (Roza spring chinook counts for return year YY; from tblSpringCounts in
\history\broodstock.mdb)

Date, passage date
Dam, currently blank
<>, column assigned by access for invalid species code count
hasck, daily count of hatchery adult spring chinook
hjsck, daily count of hatchery jack spring chinook
wasck, daily count of wild adult spring chinook
wjsck, daily count of wild jack spring chinook
brdwasck, daily count of wild adult spring chinook collected for brood stock
brdwjsck, daily count of wild jack spring chinook collected for brood stock
brdhasck, daily count of hatchery adult spring chinook collected for brood stock
brdhjsck, daily count of hatchery jack spring chinook collected for brood stock

Adult Counts (historical, to be constructed)

Dam code, PROsser, ROZa, or COWiche
Passage date, date of passage
Ladder, ladder
Species, denotes spring chinook, fall chinook, steelhead, coho, etc.
HWFlag, hatchery or wild
AJFlag, Adult or jack
Count, daily count for this date, dam, and ladder
Count method, video, trap, window counter, etc.
Count type, raw or expanded

Spawning Ground Surveys

ReddCountTiming (spawning ground survey redd count data for all years 1981-present; from
gryDWReddCountTiming2 in \SpawnTiming\YakRSpChin\SpawnTiming.mdb)

River (Yakima, Naches, American, etc.)
SurveyDate, date of spawner survey
SurveyReach (reach description, e.g., rm X to rm Y or X bridge to Y campground, etc.)
SurveySubReach (sub-reach description, if designated)

ReddCount, redd count for this reach for this date
Comments, remarks about survey

SpawnerSamplesYY (spawning ground survey physiological data, YY=return year; from
\\AdultSurvival\SpringChinook\YakimaSpawnSurveyMaster.mdb)

SurveyDate, date of spawner survey
Species, species designator (hatchery/wild indicator is first character of this code)
River (Yakima, Naches, American, etc.)
Reach (reach description, e.g., rm X to rm Y or X bridge to Y campground, etc.)
Forklength, fork length at recapture time in centimeters
POHlength, Post-eye to hyperal length at recapture time in centimeters
Sex, sex of fish
Age, age of fish based on scale sample
DNASample, DNA Sample ID for this fish if DNA sample taken
Comments, other remarks about this fish

Legal/Policy Analyst Contract Activities

The Legal/Policy Analyst (L/PA) responsibilities are to advise management on the benefits and risks associated with actions considered by the decision-makers. Through this contract performance period, the L/PA maintained a close working relationship by attending/participating in meetings that pertain to the Project, reviewing laws and regulations that affect the YKFP and participated in the planning/development process for the Project.

In summary, during the FY2005/2006 contract period, the L/PA provided the following services to the YKFP:

1. Assisted the PAPC and the YKFP Policy Group in project administration and management.
2. Analyzed applicable laws, rules and regulations pertaining to Project funding, water rights, NEPA, SEPA, ESA, and other environmental compliance requirements.
3. Advised PAPC and Policy Group as to the matters identified above.
4. Assisted in the development of regulatory permit applications.
5. Supported the development and maintenance of intergovernmental relationships between the Yakama Nation, BPA, WDFW, NPPC, and local governments.
6. Reviewed, negotiated and prepared project contracts and agreements.
7. Attended Policy Group meetings and other key YKFP meetings, as requested, and advised PAPC and Policy Group regarding issues discussed.
8. Attended regional meetings wherein the topics discussed could affect YKFP activities.
9. Advised and assisted the PAPC with regard to issues of concern related to YKFP.

Specifically, the L/PA performed tasks in the following major areas:

1. FY 2006 Project Proposal and Budget Development. In anticipation of a change in proposal solicitation approach for Federal Fiscal Years 2007 through 2009, the Northwest Power and Conservation Council (Council) modified its budget recommendation process for 2006 by providing for funding of existing projects on a status quo basis, subject to proponents providing information showing the connection between the projects and the Council-adopted subbasin plans. The L/PA worked with YKFP staff to develop appropriate reports to support continued funding of then-current YKFP projects. This included review and analysis of guidance documents and review and comment on project submissions. Pertinent submissions related to project, data and habitat management, production facility operation and maintenance, and monitoring and evaluation of production activities and impacts.

2. FY 2007-2009 Proposal Development. Based on the Bonneville Power Function Review and the electrical rate case it supports, the Council solicited proposals for Fish and Wildlife Program implementation activities for Federal Fiscal Years 2007 through 2009. The Council developed substantial amounts guidance and policy materials to inform project proposal and budget recommendation development. The L/PA worked with YKFP managers and staff to evaluate policy and guidance for the development of project proposals, prepare proposals for YKFP Projects concerning Yakima Basin management, data and habitat protection activities, fish production facility operation and maintenance, and monitoring and evaluation of project results. The L/PA further worked with YKFP staff to evaluate and respond to Independent Scientific Review Panel comments on project proposals.

Because of changes in the Council's approach to development of recommendations for annual budgets, the Council's guidance raised questions regarding statutory direction to both Council and Bonneville regarding consistency of budget decisions with obligations for the protection of trust resources and the mitigation of historic impacts to those resources. The L/PA worked with YKFP managers and other tribal staff to evaluate the implications of the recommendation process for the continued funding of tribal-sponsored or conducted projects, and to generate comments for the benefit of Bonneville and the Council.

3. Cle Elum Supplementation and Research Facility (CESRF). Water right permits issued in 1997 for the CESRF are temporary during the pendency of the Yakima River Basin Water Right Adjudication. The L/PA consulted with Bonneville officials and Yakama Nation water counsel to address steps for assuring post-adjudication resolution of permanent water rights at the CESRF.

The temporary water right permits at the CESRF require long duration well field testing and the issuance of an interim report on well field production. The interim report was to include a contingency plan for water use in the event that insufficient groundwater was available for hatchery operations. The L/PA worked with Bonneville, its consultants, and YKFP managers to develop an analysis of aquifer performance and the necessity for contingency plans based on current data.

In addition, the L/PA consulted with Bureau of Reclamation staff and tribal counsel to address the scope of Bureau water rights regarding fish production facilities at the CESRF and associated acclimation facilities. The efforts included consideration of potential water delivery contracts with the Bureau.

4. Yakima River Basin Side Channels Program Activities. As part of the overall project goal in the Yakima Basin, the YKFP has pursued the identification, protection and development of key side channel habitat. During the contract period, the YKFP acquired several properties affording side channel protection opportunities. The L/PA continued to assist YKFP staff in developing acquisition strategies for acquisition and protection of side channel properties in the upper Yakima Basin.

5. Prosser Hatchery Activities. The Prosser Hatchery provide a location for rearing and acclimation of coho and fall chinook that afford a combination of benefits for tribal treaty harvest and for restoring extirpated coho fisheries in the Yakima Basin. The hatchery facility uses surface water from the Chandler Screen bypass channel for its various ponds and raceways.

The L/PA also assisted YKFP staff in developing a strategy for responding to water availability issues during Chandler Canal maintenance shutdowns. The L/PA consulted with tribal water counsel to address implications of the scope of Bureau water rights on production activities and analyzed strategies for assuring adequate surface water. The L/PA also consulted with Bureau and local government representatives regarding assurance of legal access to the property to allow fish culturing activities there.

6. Coho Acclimation Activities. The YKFP is studying the feasibility of reintroducing coho in the Yakima River Basin. The reintroduction program requires the identification of natural acclimation sites or other suitable sites throughout the basin. The L/PA continued to assist YKFP staff in developing land use agreements, real property acquisition strategies, and related negotiations with third parties to support coho reintroduction monitoring and evaluation activities.

In addition, the L/PA assisted YKFP staff in producing an agreement with a local landowner for developing coho propagation facilities in a manner that also provided learning opportunities for local high school students. This required consideration of measures necessary to comply with state water quality protection requirement, including engineering report development.

7. Bonneville Facilities at Nelson Springs. The Council approved the development of design and pricing information for a replacement monitoring and evaluation facility at Bonneville's Nelson Springs property but deferred action, calling for the development of a lower cost option than that presented to the Council. In consultation with YKFP staff, the L/PA addressed strategies for development of modular facilities to provide M&E replacement space and new laboratory facilities. The modular replacement facility is included in YKFP design and construction proposals prepared for the Council's FY 2007-2009 project solicitation.

8. Columbia River Basin Legislation, Regulation and Litigation Activities. The YKFP operates in a context of federal, state and tribal decision-making at both the legislative and regulatory levels. The YKFP is obliged to monitor legislative, regulatory and litigation activities in order to anticipate changes in project environments and to allow effective participation in future funding and policy decisions. The L/PA monitored such activities and made appropriate reports to YKFP managers in order to allow such effective participation.

9. Procurement Contract Reviews. The Yakama Nation enters numerous subcontracts in implementing its intergovernmental contracts with BPA. The L/PA worked with Yakama Nation administrative staff to assure the implementation of the IGCs and to assure protection of Yakama Nation interests in the contracting process.

ATTACHMENT C

Technical Writer – Judith Woodward
Judith Woodward, Crossing Borders
May 1, 2005 to April 30, 2006

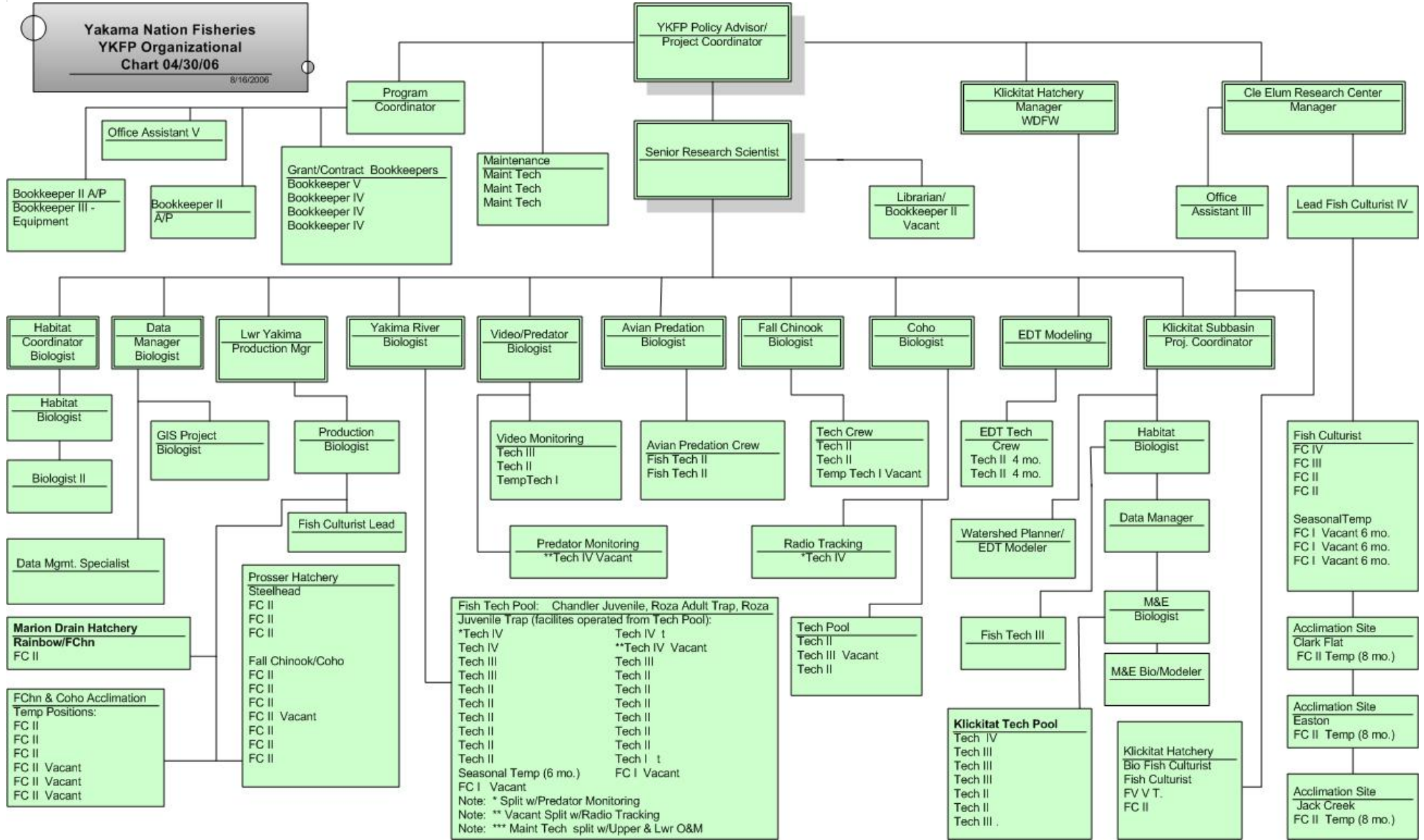
No Activity to Report

Attachment D

YKFP Organizational Chart

May 1, 2005 – April 30, 2006

**Yakama Nation Fisheries
YKFP Organizational
Chart 04/30/06**
8/16/2006



POLICY GROUP MINUTES

MEMORANDUM
May 31, 2005

DATE: May 31, 2005
TO: Melvin R. Sampson
FROM: Carol S. Speedis
SUBJECT: YKFP Policy Group Meeting

The Yakima/Klickitat Poicy Group met at Wahkiacus Field Office @ 8:59a.m on May 25, 2005. In attendance were Melvin R. Sampson, Dr. David Fast, David Brynes, Patty Smith, Pat Spurgin, Charles Strom, Jeff Spencer, Bill Sharp, Sonny Fiander, Hank Fraser, Todd Pearson, John Easterbrooks and Jeanette Burkhart.

AGENDA REVIEW:

- Todd Newsome not in attendance on travel status
- Melinda Davis out in field seining fish.
- Bill Bosch out on annual leave
- Luncheon today for Rolf Everson (resigned his position as Fish Biologist)
- Announced Jeannette Burkhart to PG, She is the New Watershed Planner stationed at Wahkiacus Field office.
- Dave Fast, John Easterbrooks, Jeff Thyer tour the Lower River May 26th.

STAC: David Fast & Todd Pearson

- Recent Yakima Aquatic Science and Management can be reviewed on computer CWU June 15th & 16th.
- New topics, split sessions.
- Scott Nicolai (Climate changes in Yakima Basin)
- Presentation to follow/Dave Fast & Todd Pearson broad base plan. Followed by BOR
- Concurrent sessions in the afternoon.
- Next day will have all day concurrent sessions.
- Any comments are welcome.
- Jay Marcotte has on Rez Projects.
- Still have room in Habitat section, can contact Scott Nicloi, may have a couple of openings
- Wanted to keep the conference down to two days.
- Patty Smith asked what kind of exposure did this get. The public is welcome, but...the space is limited due to size of rooms etc.
- The Hatchery Scientific Group has been invited. Check the YTAP section

Spring Chinook Run:

- 3,620 Adults at Prosser, 62 Jacks, 73 hatchery, 3,283 wild mostly out of basin 3, unknown.
- 3,358 at Roza

Spring Fishing Season:

- No sport season
- May 16th to Memorial Day Weekend did not pan out.

Cle Elum Fish Passage Study Status:

- Nothing has changed.
- Mark has released.
- Maybe high enough to release the fish.
- Dave will speak with Mark.

06 Contract Responses:

- Worked on late last Friday p.m. 160 man hours to put these together.
- Huge discussion on what needs to be placed in these.
- Nelson Springs looked o.k. as per David Brynes.
- Two days review of recommendations (middle of next week will review)

NPPC Tour Report:

- Columbia Land Trust participated.
- RZ Smith was pretty impressed.
- Tour was held Wednesday, May 18th toured from Lyle, Wahkiacus, Hatchery, and Kessler and then to Castile Falls. Got everyone back to Yakima. (With the exception of Patty Smith who ventured out on her own).
- Thursday, May 19th, 2005 started at Prosser, talked on American White Pelicans, Steelhead & Fall Chinook Project. Proceeded to Roza and watched crew work the fish and then to Hanson Ponds to Cle Elum Hatchery.

OPERATIONS:

Cle Elum Supplementation & Research Facility: Charles Strom

- 2004 brood fish on hand as of May 25th is 846,352 with an overall average of 1070 fish/lb at end of April 30.
- Pump removed and installed during month of May. Still have problems achieving 5,040 gpm's combined flow. CH2M Hill would like to move pump to see debris is caught in the impeller.
- Paul Stamschor of Concord looked at outlet channels at all sites. By-pass pipe seems to be the most cost effective measure to correct overflow problem. (see attachment for rough bid).
- Chiller turned off April 29.
- Received first wild 2005 brood on May 2, 2005. Have 168 adults on hand as of May 24, 2005. Brood consists of 97 wild females + 39 wild males + 1 wild jack and 22 hatchery females + 7 hatchery males + 2 hatchery jacks.
- Water supply to hatchery host RV dug up and repaired.
- Sky light window to River Pump Building replaced by Kittitas Glass on April 29, 2005. Window was damaged by rock throwing vandals.
- Installed road and facility signs to hatchery grounds.
- Four Seasons serviced facility HVAC system on May 9, 2005.
- Office windows cleaned by Ros-Elum.

- Phelps Freeborn of Department of Ecology stopped in to drop permit off. Good until 2010.
- Jack Creek site cleaned and shut down. Clark Flat has one pond to go and facility clean up. Easton is on stand by until pump test is complete.
- Wells 1, 2, 4, and 5 supplying the facility with 1687 gallons per minute.
- NPPC and Cle Elum High School tour on May 19.
- Dirk of Cascade Weed and Pest Management applied weed spray to Cle Elum Facility.

Activities of Volunteer Hosts Kem and Lou Goldsmith:

- Have taken both digital still pictures and video segments for slide show.
- Created and maintain slide show for presentations to visitors.
- Keep tally on white board on adults delivered.
- Landscaping.
- Lawn and yard maintenance
- Display a “mort” so visitors can see size and shape of a fingerling.
- Received first-hand experience in mort collection, monthly measuring and weighing fish.
- Informed visitors using slide show, egg jar display, and by visiting overlook.
- Answering questions and asking questions.
- Have had approximately 38 visitors.
- About 25 high school Native American Literature class students – were allowed into pond facilities for touring.
- Host’s comments and recommendations:
- Need “hatchery” street sign at intersection of So. Cle Elum Road and Charter Road at traffic light.
- Need to distribute more brochures when possible, we will keep set in car.
- Everyone in the facility has been very hospitable, friendly, and accommodating.

Prosser/Marion Drain: Sonny Fiander

- Released at Prosser Fall Chinook two groups of accelerated 100% marked. 12,000 pit-tagged in this groups.
- Volitional release April 15th pushed out.
- Two groups conventional fish LV, RV each group had different marks. Released May 6th. Had a bit of a disease problem.
- Little White Hatchery fish acclimated at Prosser.
- Marion Drain release 52,000 – two groups
- Coho on station 70,000 in basin.
- 190,000 out basin (Washougal)
- Acoustic tags 60 fish no terms group and short term group 75 fish 30 acoustic groups. On April 15th.
- Going through shut down. Getting ready for adult collection.

Habitat: Hank Fraser

- Holmes land purchase that Scott Nicolai had been working on fell through.
- Lower Reeser Creek, Swamp Creek meeting w/Bruce Crow May 26th purchase property.
- On Lower Reeser Creek. Paper Water rights –v- Actual Water Rights. Both creeks water rights, having trouble dealing with land owners or irrigators.
- Questions to David Byrnes regarding BPA paying electrical bills?
- Should not be subsidizing any O&M.
- Two to three years then it’s phased out.

Klickitat: Bill Sharp

- Castile Falls 4&5 about wrapped up. 10&11 tunnel, need concrete patching. In Mid June done on all work.
- Steelhead passage.

- Hatchery transition. Smaller items taken care of. IPA off the desk in Olympia, thanks to John Easterbrooks. (after 5 months).
- State IPA's are being finalized.
- Master Plan IRSP comments that needs to be discussed.
- Klickitat Master Plan will be the first one out.
- With members of the Yakama Nation and Bob Foster package to go back to Washington DC for more funding for the Mitchell Act.
- Need to get confirmation from the Yakama Nation Tribal Council to see if this is what they want.
- Transfer of Klickitat Hatchery from WDFW to the Tribe.
- Issued a DNS and withdrew after comments from Klickitat County.
- The County is filing briefs and some testimony.
- This could be another three months out or longer. When it comes to be SEPA process.
- 82 adults back to the hatchery.
- Three year old fish look a lot smaller.
- We are behind right now. Need around 500 to 700.
- Ron Ballard is worried about the egg take.
- Progressive sport fishing going on and will close at the end of May.
- Peak is the next two weeks for the hatchery. Ron will keep a close eye on these.
- Joe Zendt has been working at Lyle Falls.
- Steelhead mainly in trap.
- Fair number of jacks showing up
- Adults at the trap. Trap is running under bull trout study.
- Majority is passing through the natural falls.
- No bull trout.
- Wrapping up the steelhead surveys. Total redd count are low.
- Little spawning going on in the area due to lack of flows.
- Redds were found in the mainstem.
- Pit tag fish released 10,000 above Castile Falls.
- Already picking up several in the screwtrap.
- Combination of last years and this year's pittags. David Byrnes also informed that these pittags needs to be carefully managed. Forecasting the need.
- Steelhead redds above Castile Falls.
- Jeff Spencer has been doing EDT updating the database, this is ongoing.
- Outputs that can be easily placed in the EDT, will have report out in three weeks.
- NOAA Fisheries does have funding on some projects.
- June 1, 2005 hopefully have the nuts and bolts of geographical of area and subbasin, would like site specific. This is what we would like by September 1, 2005.

CONSTRUCTION/MAINTENANCE/MITIGATION: David Byrnes

- Status Update, Easton pump problems have been addressed.
- 06 Budget Contracts: There will be feed back.
- All contracts are all new ones and in place.
- All prepared and ready for Pisces process.
- Everyone who gets ID's all will have pass words assigned.
- Tillman Creek, two easements and construction contracts ECP contracts the other easement.
- Nelson Springs (hand-out of layout of bldg would look like)
- Strategy for M&E
- What is the minimal we need? A very simplified building and cost effective.
- Budgets:
- 70,000 up price from the sub contracts.
- General prices increased (Davis Bacon) is why the price went up.
- Tillman funds available in 2005 \$300,000 though we could do these two projects. But...due to Davis Bacon rates these have increase to 70,000.
- Out year maintenance costs plus labor.

- Scott was interested in the idea of deferring all of Tillman Creek funds for one year to try and negotiate for ECP? David informed Scott that he didn't think was a good idea and will continue with Tillman Creek without the deferral.

NEPA: Patty Smith

- Yakima Coho project supplement EIS or FWIP.
- Hatchery ROD needs to be done; will know when Master Plan gets finished.

NEXT MEETING: Nelson Springs, Wednesday, June 29th, 2005

Meeting adjourned.

M E M O R A N D U M
June 2005

DATE: June 30, 2005
TO: Melvin R. Sampson
FROM: Carol S. Speedis
SUBJECT: YKFP Policy Group Meeting

The Yakima/Klickitat Policy Group met at Nelson Springs on Wednesday, June 29, 2005. In attendance were: Melvin R. Sampson, Melinda Davis, Todd Newsome, Dr. Dave Fast, Charles Strom, Bill Bosch, John Easterbrooks, David Byrnes, Patty Smith, David Lind, Pat Spurgin, and Bill Sharp.

AGENDA REVIEW:

- Todd Pearson, Bill Fiander and Scott Nicolai will not be in attendance.

STAC: David Fast

- PAR (Science/Management Conference Report), received positive feedback from people that attended.
- Scott Nicolai and William Meyer done the Habitat portion of the PAR and the talks were well received.
- Paul Huffman has 80% of the presentations on the YKFP website (blue hyperlinks).
- David Byrnes would like to create a title page or reference to the 2005 PAR to show as YKFP Project. Paul K., of BPA was impressed and this to be the only model of its kind in the northwest. He would like to have access to this data.
- Paul Huffman will look at the title and change the name from 2005 Project Annual Review.

- Council member are always sent invites to the PAR and in the past have always declined. This year the PAR was held same time as the Council meeting.
- As per Paul Huffman we have 64% space left on the website for more additions to PAR.
- Council Members and NOAA are the ones to make selections for the ISRP. The people that are selected are term limited to this panel of people.
- Dave Fast will get with Paul at the WSU to see what the calendars looks like for next years PAR. Once this is done will contact Marker or Fritch to see if Council can accommodate the PAR with the Council meeting. The Council should be getting next year's calendars done in either November or December 2005.
- STEELHEAD PLANNING REPORT: David Lind
- Recovery Plan, the interim draft is due June 30th, 2005 into Salmon Recovery. Had a quarterly review with the Salmon Recovery people.
- Work till mid-July on the draft.
- July 22nd to NMFS Science Center.
- This is Steelhead and Bull trout.
- This will be a more in depth report.
- Any progression on steelhead in other basins
- The Yakima is the lead when it comes to steelhead studies.
- What kind of role does EDT play?
- It should be playing a bigger role than it is right now. Use EDT a little better than it has been.
- Storage dams and passage issues of upstream and downstream issues.
- Hope to make this a little clearer in our master plan.
- Goes to public on August 22, 2005.
- Nothing needed from Patty as far as NEPA.

OPERATIONS:

Cle Elum Supplementation & Research Facility: Charles Strom

- 568 adults for 2005 brood transferred to Cle Elum. One mortality (wild female) recorded to date.
- 2005 brood comprised of 305 wild females + 64 hatchery female = 369

133 wild males + 27 hatchery males =	160
29 wild jack + 10 hatchery jack =	39
TOTAL ON HAND:	= 568
- 22 HxH jacks transferred to adult holding pond #1. Appear to be holding well and taste pretty good. 27 precocious males transferred and held in circular tubs.
- Adults treated three times a week at 1:6000 ppm.
- 2004 juveniles end of month samples 825,211 on hand 379 fish/pound. Total 18 raceways (16 WxW, and 2 HXH). Start of June high and low group feeding rates set for October 15 marking size (Hi=30 fish/pound and Lo=45 fish/pound).
- River Water Cooling Facility turned on June 2, 2005.
- Clark Flat and Jack Creek fish were forced out May 15.
- Generators at Jack Creek had yearly maintenance performed on June 22. Cumulated hours on generator 1 are 11,856 and on generator 2 it is 13,384 hours.
- Clark Flat pumps off and raceways pressure washed. Need to clean up trailer and office. Jack Creek is cleaned and shut down for next year and Easton is cleaned and shut down and waiting for another pump test.
- Cle Elum office is now up to date and has DSL for service. NO MORE DIAL UP.
- Facility consultant here June 7 and 8.
- Don Larsen completed precocious study and took samples on 12 of the 16 tanks. Have four tanks left that he will monitor until late summer.
- Incoming post top mounted signal light damaged by gravel trucks. Working on relocating light to prevent this from happening again. Light is temporarily fixed repaired and functioning properly.

- Had cracks sealed and a sealer placed on Spring Chinook Way and road in front of the main office area. All Aces paving applied the sealer and sealed up the cracks on the asphalt on the entire facility.
- Repairs to gas pressure washer and forklift were needed as both pieces of equipment were in fault mode.
- Tia Beavert and Rose Chifchille here on a two week internship. Duration of their stay started on June 20 and will end July 1, 2005.
- Vernon Bogar and DJ Brownlee attended Native American Fish and Wildlife Conference in Choctaw Mississippi.
- Hatchery Hosts Lou and Kem Goldsmith completed their two month stay. Thursday, June 30, 2005 will be their last day and will be having a luncheon for them. Charles and Eileen Cochran are hosts for July and August. They are from Florida and are currently on site.
- Cle Elum Hatchery Open House was discussed and looking at August 13th or the 20th. Please check your calendars.
- **EASTON**
- CH2M completed what they thought was their final test. But, we had a fall off. The next step is right now they are developing a screen that will keep debris away from the impellers. Will take appropriate measures to keep the impellers safe. They will go back in the second week of July and pull the pumps. Then will re-water and run the pumps again. This has been approved by Bob Barwin to re-water. This will be another \$5,000 to complete the test.
- Mike of Fishpro will be looking for a solution to see if we can use a bleeder.
- This will be or should be done by July 15th, 2005.
- More information will be provided at the July Policy Group Meeting.

Coho: Todd Newsome

- Crew is snorkeling right now.
- Looking for location of Coho and how big they are.
- Baseline sampling in two weeks.
- July 11th will be marking in- basin and out-of- basin Coho at Prosser. Will be LV clipping the In-Basin Coho and adipose clipping the out-of-basin Coho. None of these fish will be unmarked.
- Finished DAN on the steelhead.
- 186 samples from the Naches.
- Received scale samples back (maybe resident)
- Average about 170.
- NEPA Coho, Patty Smith
- Supplemental EIS? Or, hold off and wait for the FWIP ROD addressing artificial fish production? An internal BPA team met and it was decided that we hold off. As per Mr. Delwich. And take advantage of the tiered ROD process. This will be an umbrella strategy that can best benefit this project and many others.
- Will have tiered RODS for these processes.
- It will address artificial production. This will be for all species not just Coho.
- Basically Bonneville expects to have a ROD by January 2006 which will be better define the environmental compliance process for the Coho activities. We are looking at the fall of 2006 for our projects.

Fall Chinook: Melinda Davis

- On the down time right now.
- Goal for the next couple of months will be to work with Bill Bosch to create a better picture for the fall Chinook.
- Take the existing information and organize it so it will work better for me in the future.
- Scales all aged and in place.
- Do get reports from John Easterbrooks on fall Chinook and is a good source of information.
- Will concentrate more on the Marion Drain fall Chinook and maybe do more scale samples.
- Curious about the out-of-basin fish? I have no information of this what so ever?

Data: Bill Bosch

- Handed out a small preliminary table June 2005.
- HGMP came back to haunt again this year.
- A need to develop a table to show all the activities that are going on.
- Will be talking with folks this summer for some data to get these tables created.
- Submit manuscript of Coho.
- After three months of review sent back for revisions, before publication.

Klickitat: Bill Sharp

- Having gate issues with the County of Klickitat. Locking of gate for access.
- Will be talking with the roads people.
- Will have the gate removed.
- Develop access from the park.
- Having clean-up issues with sport fishers.
- Jim Ball (previous property owner) moved outhouse to our property. Will work on getting some facilities on site.
- The County is making an issue of all this and not the state.
- Will look into some Region 5 money to have the access and to keep up the property.
- BPA Annual Review reports.
- Design and construction draft will get o David Byrnes by next week.
- Castile Falls 4,5 and 10 & 11 are all complete. Will do some clean-up with-in the tunnels.
- Will not be hauling adults up stream this year.
- Did have adults using the tunnels and some using the natural falls. Also had some steelhead using the tunnels.
- Friday, July 22, 2005 will tour again with Bill M and Greg Delwich from BPA. Will tour the Klickitat Project, habitat work and subbasin work.
- Patty Smith will also be coming along on the tour with David Byrnes.
- Folks from NOAA, Corp of Engineers are looking for projects to fix up.
- Looking for a time to maybe tour the Klickitat?
- They were directed to Will Conley on projects that may need fixing.
- Was discussed to see if we could get NOAA and Corp of Engineers to tour along with BPA to see all the projects.
- It was also discussed to have NOAA and COE out on tour in September when we start getting fish?
- The discussion was with NOAA on June 28, 2005 and they are the ones that mentioned Corp of Engineers. Even though Corp of Engineers was not in the discussion.
- Will Conley and Bill Sharp will take the lead on the tour. Will coordinate with NOAA.
- SRFB delegation would also like to attend.
- Start the tour at Lyle Falls.
- David Byrnes wants to know the quickest exit plan from the tour? This is for Executives of BPA so they can continue with their weekend plans. What ever they may be.
- Discussed to get them to the nearest air strip to fly back to Portland. Air strips are located in Goldendale and The Dalles.
- A helicopter can fly them into the closed area at a helispot for the tour.
- Dr. Dave Fast will get back to Bill with a contact person from NOAA to contact for tour information.
- IPA's for Klickitat employees, should we be extending these until December of 2005?
- As per Pat Spurgin we should get these extended indefinitely.
- Negotiations with state and Klickitat. This is just another way to go but, as far as we know this connection is not being done.
- At this time right now it's between Yakama Nation, WDFW and Klickitat County.

CONSTRUCTION, MAINTENANCE, MITIGATION: David Byrnes

Status Update:

- Nelson Springs take the skinny proposal; the minimal that we would need.
- The diagram and will discuss with Melvin, David B., and Dr. Dave Fast.
- Pump testing at Nelson Springs

Budget:

- Todd Pearson's contract is due August 1st.
- Statement of Work is all posted in Pisces.
- 120 days for Klickitat Habitat Renewal. Will Conley and Bill Sharp.
- Can go to the Pisces to create and build off.
- Tillman Creek, access approved by Washington Parks.
- Can use the John Wayne trail. Not for construction use.
- Will have cost estimates on this project by end of the week.
- Have discussed with property owner Jeff to have access behind his trailer.
- Maybe enter in his gate. Will discuss permanent access at the boundary line. This could be two years away.
- Getting the construction of easement done, this is taking priority status.
- David B. needs to do a sole source justification of project and work to be done.
- 2006 budget.
- By end of July, would be coming up with a number.
- See how Side Channels survive in the 2006 budget process.
- 2005 moving forward to wrap up property purchases.
- Complete public involvement.
- Maybe third week in July.

NEPA: Patty Smith

- Driftnet cx for Todd Newsome.
- Other than previous discussions, nothing else to report.

NEXT MEETING: July 27, 2005 at Nelson Springs

Meeting adjourned

MEMORANDUM July 2005

DATE: July 29, 2005
TO: Melvin R. Sampson
FROM: Carol S. Speedis
SUBJECT: YKFP Policy Group Meeting

The Yakima/Klickitat Policy Group met at Nelson Springs on Wednesday, July 27, 2005. In attendance were: Melvin R. Sampson, Charles Strom, Dr. Dave Fast, Bill Fiander, Bill Sharp, John Easterbrooks, David Byrnes, Pat Spurgin, Scott Nicolai, Todd Pearson, Patty Smith and Todd Newsome came in at noon.

AGENDA REVIEW:

- Naches Control Line, add to STAC: Todd Pearson
- Melinda Davis is attending presentation at Harrah School Dist.
- Todd Newsome is working with Coho this morning will be in later.

STAC: David Fast

Cle Elum Fish Passage Status:

- Cle Elum & Bumping Lake last week Tuesday and Wednesday BOR tour of two sites; designs of two infrastructures. So we can come up with two preliminary designs of upstream passage. Mark Johnston attended the Bumping Lake tour and I attended Cle Elum.
- Flume to guide fish down.
- Drought year didn't get dam down, so Mark released else where.
- Work will proceed next year, which was to happen this year. Evaluate efficiency of fish below dam.
- Similar work at Bumping Lake.
- Do we want to tunnel through the dam?
- This is all design work at this time.

CSMEP:

- Wednesday Bill Bosch and I went to meeting.
- Facilitating Tribes and State agencies.
- Working on five components.
- Determine experimental design to improve upon them.
- CBFWA is the one that implemented this process along with NPPC which backs this process.
- Various designs that these groups come up with.
- In the beginning there was not much interest.
- The group has grown since then and people are getting more involved.
- Maybe early 2006 could see some reports.
- Which these maybe used in 2007 funding and projects.
- Setting up studies to be evaluated.
- Bring a lot of projects that people are doing and place together.
- These fit in with the Subbasin Plan

Klickitat Tour Report:

- John, David, Mel, Bill, Patty, Larry Cassidy, Buzz Cobell, Gregg Delwiche, Phil Rigdon and Virgil Lewis are some of the people that attended the tour.
- All met at Glenwood.
- Started at upper Water Shed and came down.
- Met w/Will Conley and he explained their projects.
- Castile Falls climbed down to tunnel.
- Screwtrap at Castile Falls.
- This was a successful tour.
- The feedback from BPA on the tour was great.
- Touring the Meadow (McCormick Meadows) on this tour was a great treat for Mr. David Byrnes, because he missed it on the last tour.

Naches Control Line: (added agenda item) Todd Pearson

- Concerns of numbers of the fish on the Naches.
- Total run 6,700

- Need 700 up the Naches, this is lower than projection.
- Ten females with 600 eggs each.
- Should we continue to plan this?
- Write a protocol of how many eggs/females.
- No use in going up there harassing fish.
- All out of Little Naches is where we got the fish before.
- Drifting through pools with nets is what we did last year. We don't want to do this again.
- Fish that are actively spawning can not be seen.
- When fish is setting on redd and we watch where they go and snorkel in and catch partially spawned fish.
- Certain eggs from some females and eggs from another female.
- Not snagging and not catching any green fish.
- Naches is really low right now.
- Place the fish in tubes; we don't harm them at all.
- Have to schedule around Ray's schedule so he can be there on site.
- Continue to plan to do this but, expect to branch out if needed.
- If we need to skip a year, it will make our data numbers and information loose or be off by one year.
- Looking for fish (potential victims)
- Anthony's crew are doing survey's now or maybe the third week in August.
- Surveys and carcasses right now. Little Naches and Bumping.
- Minimum number of eggs will probably be ten-pairs. This is already scaled down for drought year like this now. (Six-pairs).
- Trying to use four-year old fish that are partial to the Yakima.

OPERATIONS:

Prosser/Marion Drain: Bill Fiander

- Coho Prosser out of basin 197,000 Washougal fish Todd N. will use these.
- In Basin 100,000 and 45,000 came up with furunculosis. On medicated food right now.
- Fish Health has been on site.
- Result of water quality.
- Prosser is not the best place for Coho due to water temp.
- Replace well pump in the incubation room.
- Steelhead Kelt Reconditioning 272 Steelhead on site; no term release
- 72 released short term.
- Direct release 67
- Revised program this year.
- Short term fed two-weeks below Bonneville
- No term will be at Bonneville.
- Direct in Yakima pit tagged release.
- Long term regular conditioning also used in released in basin above Granger
- Taking fish regardless of quality.
- Instead of culling the fish.
- Release the really bad ones (cull)
- Releasing short term, no term and direct.
- Eggs will be sent to Uofl for monitoring.
- Full spread of fish that go to Yakima and the others below Bonneville.
- Dave Fast is ahead of the project with contract with CRITFC.
- Mortality on these were a fair number.
- Bids out for rest rooms module/mobile for Prosser.
- Chris Reid at BPA is aware of this.
- Metal, iron, and petroleum these cost on going extremely high.
- Well pump at Marion Drain replaced

- The crew is getting ready for upcoming broodstock collection
- Todd Newsome is releasing Coho today.

Cle Elum Supplementation & Research Facility: Charles Strom

- 621 adults for 2005 transferred to Cle Elum. Three wild female mortalities recorded to date.
- 2005 brood comprised of 334 wild females + 67 Hatchery females = 401

144 wild males	+ 31 Hatchery males	= 175
<u>32 wild jacks</u>	<u>+ 10 Hatchery jacks</u>	<u>= 42</u>
Total on Hand		= 618
- 27 precoccials on hand held in circular tank #16.
- Adults treated three times a week at 1:6000ppm.
- 22 Hatchery by Hatchery jacks transferred to adult pond #1.
- 2004 brood juveniles on hand end of month samples for July 819,728. Total 18 raceways (16 WxW, and 2HxH). Start of June high and low group feeding rates set for October 15 marking size (Hi = 30 fish/pound and Lo=45 fish/pound).
- Four river pumps supplying 13,500 gpm's to rearing ponds.
- Jack Creek, Easton and main facility treated with weed control by Dirk of Cascade Weed and Pest management.
- Rose and Tia finished two week AISES obligation and worked at the Cle Elum Facility for a two week period.
- Easton tests completed during the week of July 18th. Both pumps pulled and screens placed around the implellers. Pumps allowed to run for four days.
- Two pumps are able to achieve desired flows (5,040 gpm's).
- Jack Creek weir lifted and gravel cleared from underneath both gates.
- Vehicles washed and waxed during the month of July. Dodge serviced at University Auto in Ellensburg. It needed new rear brakes.
- Lou and Kem Goldsmith left and Charles and Eileen Cochran set up camp for their stay. The Cochran's agreed to stay until the end of September as the Smith's cancelled out September and October tenure.
- Kittitas Irrigation makes monthly visits to monitor the wetland area. Doug Gresham of Sheldon and Associates also stopped in to monitor wetland areas.
- Post top signal light was relocated to the top of the incoming retaining wall at the intersection of South Cle Elum and Charter Road.
- Mabton summer school and Heritage Summer program for teachers toured the facility in July.
- August 16th pre-spawning meeting 9:00 a.m.
- Talked on sign relocation to the Cle Elum Hatchery.
- Signal light hit by ECP and it has been repaired.
- August 13, 2005 the Cle Elum Staff will host a Potluck Salmon Back 1:00 self-guide tour and will eat at 2:00 p.m. It will also be Bill Sharp's Birthday
- Predator avoidance training complete
- Vern Bogar Jr. III summer youth worker
- Should we contract and flag dangerous trees for the Forest Service to cut?
- Well #2 are there any dangerous trees near by?
- DJ Brownlee our safety officer is attending a safety course today.
- Will have DJ contact someone at the Forest Service about the hazardous trees in the area.

Habitat: Scott Nicolai

- Grant application deadline is today July 27th. Cost share for property of Rugacers land. \$800,000 it could be appraised at? It has not yet been appraised.
- Down stream from area that is already protected.
- Met with family they are interested in speaking with us regarding sale of the property.
- The family is out of Seattle and the main contact person is Roger, their family has owned the land since the 1950's. Hopefully we can get to some agreement.
- Interchange land, upstream from Boone \$80,000 match from BPA.

- Resort is to donate large woody debris.
- Bring in helicopter to place all this wood. Narrower and deeper.
- July 26th governor in Ellensburg doing a press release to let the local people know they were doing a good job. Cattlemen's Association was there. Phil Rigdon was in attendance and spoke on behalf of the tribe.
- Manastash Project is going in the wrong direction.
- Proposing to consolidate and move upstream three miles to other diversions.
- Ecology needs to let him know that he can't do it.
- Irrigators are not happy.
- Will Conley who filed the draft was as mad as the irrigators and did not want to speak of this subject during this meeting.
- What kind of money is pushing these issues?
- Holmes is looking good – land owner has signed agreement and will be closing here pretty soon. Paid more than what we were suppose too. \$65,000 more.
- Yakima County meeting, Municipal Resource Task Force meeting and Kelly Clark is coving this for Scott.

Klickitat: Bill Sharp

- Broodstock of Coho at the hatchery.
- Truck to Washougal with eyed eggs to hatchery.
- Spawner surveys will start next week at Castile Falls.
- Feel good about spring Chinook at Castile falls.
- 50% design completion at Wahnkikus. M&E project.
- 930 accrual has a positive balance.
- USGS radio elementary 50 tags steelhead.
- Purchase pittags with even though it's not under pay line.
- These requests will be coming out to David Byrnes.
- Balances came from not hiring a tech on time.
- Spending cap rule which could be in our favor.
- IRSP comments Bill Bosch and Bill Sharp came along way with this and will pass on to Dave Fast for his review.
- Joe Zendt will do his along with Chris Frederickson next week.
- Mr. Greg Delwiche, BPA maybe redrafting the Keys Letter. Make it not so harsh.
- Greg needs a baseline information from the Mitchell Act to see if this will be accepted?
- Harbor Engineering 2003 built off.
- KWIP project, not getting BIA cost share. Swap subcontract \$90,000 purchase/capitol tepee creek also be submitting to BPA These are Will Conley's project
- These are for the year and Deanna Lamebull is working on these.
- Will Conley received his e-mail with his piceses pass word.
- Spending cap will be waived.
- Joe Zendt, M&E is being drafted right now.
- Final will be to David Byrnes maybe next week and these should be up on the piceses. Work with Nancy Webster for structure and layout.
- Training and Ed with changes made by Adrienne, David will have Nancy PDF the file.
- Tony Grover, Power Council on FY06 stuff stopped and met with Adrienne, Paul and Bill Sharp
- David Byrnes will be going through a period of transition for 3 1/2 – 4 months. Will be relocating to Idaho. Government relations to the Governor. Will be the point person in Idaho. This will be on a two-week stense.
- Will be starting his two-week vacation starting the 8th of August and right after that will be staring this detail.
- Will be detailed for 120 days (could be shorter?)
- So please keep in touch and work with whom ever the person will be taking details over David Byrnes duties at BPA.
- Will get spending caps all done for Bill Sharp before the 8th.

Coho: Todd Newsome

- Releasing over winter PAR Hanson Pond today.
- Boone on Monday, August 01, 2005.
- Holmes on Tuesday.
- Looking at winter survival.
- This is a practice till the Master Plan gets approved.
- 7% survival rate in winter PAR, Homes 2% survival rate. 3 ½ % in the river survival rate. Hanson Ponds 7% survival rate.
- Boone Pond is around 78
- No predator birds are hanging around.
- David Parrish is doing his thesis on Hanson Ponds, has been taking data.
- Have not seen any pike minnows.
- Boone Pond smolts in there attract mergansers these are the large smolts that attract these birds.
- All fish marked last week.
- Getting LaSalle going, water rights etc.
- Looking for documentation that may have been developed back in 1994/1995 that Yakama Nation had future use and plans for the Hatchery by airport. This is when Jimmy Lee was the Hatchery Manager.
- This would have been after 1994 after the steelhead.
- We just want the water rights and not use of the Hatchery facility.
- Upper Elk Meadows, Wild Duck Pond and Beaver Lake (privately owned). Looking at these for acclimation sites.
- John Easterbrooks has contact information for Beaver Lake. Will get back to Todd.

CONSTRUCTION, FACILITY MAINTENANCE, MITIGATION: David Byrnes

- Easton/Clark Flats completed pump flows at these two sites.
- What will be the outfall?
- Resizing of the pipe, will take care of the problem we were experiencing.
- Out fall channel and to reinstate, this looks like the obvious fix, it could be the fix?
- NELSON SPRINGS:
- Gregg Phiffer of Williams Scottsman looked at two different layouts of office space.
- Should be able to look at sometimes next week. David will send out maybe Monday or Tuesday.
- Shrinking the footprint and make some smaller space.
- Look at structure to accommodate all staff members as well as space needed for technical areas.
- We don't have any Council members that are backing up this project.
- 2006 budget has zero in there for this project.
- They want to see what structure we come up with before they place any dollar amount on it.
- What size building will work for us or can we deal with?
- Staying in the capitol side of the budget.
- Evaluate some alternatives.
- BUDGETS:
- 2006 budget up for the Council to review in August 2005.
- Go to Agenda for review and look at their issue paper for that project. This is on the web page.
- Value for Capitol budget in design.
- CH2M Hill monitor and Sheldon. Maybe off by two months on Sheldon.
- Moved some of the 2005 budget to 2006 budget.
- Side Channels.
- Patty and Council staffers from Spokane (Stacy) through out whole review would explain that there are other projects that are out there besides side channels that are ready to go.
- This discussion will take place in August at the Council meeting.
- Would like these in proposal form not by parcels. Need
- What constitutes a high priority habitat area? This is going to be the criteria of the Council.

NEPA: Patty Smith

- Completed the Drift Net CX for Chris Johnson
- Working on nothing new right now....except Coho but, this is on going.
- As always, if there are any environmental questions, please let her know.

NEXT MEETING: August 31st at Nelson Springs

Meeting Adjourned:

MEMORANDUM August 2005

DATE: September 8, 2005
TO: Melvin R. Sampson
FROM: Carol S. Speedis
SUBJECT: YKFP Policy Group Meeting

The Yakima/Klickitat Policy Group met at Nelson Springs on **August 31, 2005 at 9:10 a.m.** In attendance were Melvin R. Sampson, Todd Newsome, Charles Strom, Dr. Dave Fast, Pat Spurgin, Bill Fiander, Melinda Davis, Bill Sharp, Todd Pearson, Scott Nicolai and John Easterbrooks.

AGENDA REVIEW:

- David Byrnes is on his way from the Airport
- Coho will be moved to front of Agenda, Todd Newsome need to leave. Marking fish today.
- Melinda Davis needs to leave at noon for doctor's appointment.

COHO: Todd Newsome

- Wild Coho to try to pittag. 60-70mm.
- Detected one at Bonneville.
- Tag in Naches today 8/31/05. Catch wild Coho and some are rearing at Stiles. Full tags.
- South Naches Channel there is fish in hear.
- Nile has the most and the biggest.
- Coho starting to come over Bonneville
- LaSalle up on line
- Waiting for letter from Jeff Schuster for the tribe. (temp water permit).
- DOE will decide on the permit.
- Bill Bosch has been working on Coho feasibility
- Danil trap will start up in September.
- Radio tag fish this year again.
- CO2 Carbonate to know these fish out. This is what Steve Schroeder used.
- Using this process knocks the fish, Mark J. has used this once at Roza and the fish went wild and some didn't turn over. Plus the recovery time?

- Will contact Mark J. about this again.
- Spawning meeting Todd and Charles
- Fish in the raceway, asked if anyone had a need for these fish? We end up offing them, they were turned already.
- Do we have a process for this? Answer is no.

STAC: Dr. Dave Fast and Todd Pearson

Naches Brood Stock Collection

- Anthony from the state is up looking for fish today 8/31/05.
- 200 redds in the American
- Mostly five year old fish
- Will determine to if 6-10 pairs is what were looking for, if any fish is found by Anthony today.
- Will collect on September 1st. Maybe a pair today if any found?
- Eyed stage before transfer to hatchery.
- List of phone numbers for emergency plan?
- Dave Fast will be the lead guy for these calls.

Spring Chinook Eggs for Don Larsen Research

- Eggs and mild from Cle Elum Hatchery
- Looking for excess eggs from HxH cross females five fish
- All eggs from three females wild
- And milk from males wild
- Only if these are excess, last in line
- He will take and incubate at his research facility.
- Ray Brunson, Pathologist will look at these fish, maybe at the hatchery.

YKFP Summer Report Status

- Four pieces that need to be filled in yet. Two pieces male & female fertility, fry – smolt survival in hatchery environment, smolt outmigration and Supplementation line.
- Data analysis Incomplete is what was in last years report. So we may need to have something there this year.
- Contract deliverable to BPA.
- Ask the big questions for supplementation for fall Chinook.
- Two reps for hatchery control line.
- May have some sampling error, due to the way samples are collected.
- May drop as a trait in the domestic line.
- Smolt portion is where we need to concentrate on for the report. Contract ended in July and report is due by end of September to BPA.
- Areas that still need to be addressed. Information you're waiting for, who is the person you need to contact to get this info from?
- David Lind for statistical information.

OPERATIONS:

Cle Elum Supplementation & Research Facility: Charles Strom

- 628 adults transferred to Cle Elum for the 2005 season. Total mortality recorded as of 8/30/05 is 12 salmon. Mortality includes 9 wild females, 1 wild male, 1 wild jack, and 1 hatchery female.
- Transfers according Roza are as follows:

	Female	Male	Jack	Total
- Wild	332	145	32	509

- Hatchery	66	31	10	107
------------	----	----	----	-----

- 2004 brood end of month samples for August estimate that we have 812,579 on hand @ 107 fish/pound. Total 18 raceways (16 WxW, and 2 HxH). High group is at 95 fish per pound and the low is at 119 fish per pound.
- USFWS sampled a few rearing ponds found Costia and inch in our rearing ponds. Ponds were lowered during the weeks of August 15 and the 22 for an eight day period to flush parasites in the free living state.
- Four river pumps are supplying 15,145 gpm's to rearing and research ponds.
- River water Cooling Facility shut down on August 18.
- Simplex Alarms needed a service calls as a couple of units were in fault mode.
- Facility carpets cleaned during the weeks of August 8.
- Ameri-corps performed service work in the second week of August.
- Concord cleaned spawning channel on August 22.
- Raincountry Refrigeration started clean up of chiller August 30.
- Pre-spawning meeting held at Cle Elum on August 16.
- Simplex Grinnell performed annual inspection of fire and smoke alarms.
- Thanks to those attended the August 13, open house.
- Simone and Annie Jo given evaluations during the month of August, Terrance Compo, seasonal fish culturist II last day of work was 8/31/05.
- Vernon Bogar and Annie Jo assisted Klickitat Hatchery sorting and spawning salmon. Vernon went on 8/23 and 8/24 and Annie Jo assisted on 8/30 and 8/31.
- Camp host 9 groups' total hours for Eileen is 25 hours and Chuck Cochran approximately 83 hours for August.
- September 30th will have a BBQ for the hatchery hosts.
- Staff to monitor and document for the use of chemical in the chiller.
- Patty Smith may want to take a look at or evaluate?
- The Chiller is for the well water at the hatchery. Chills well water only for incubation.
- The end of October will be a good time to sample.
- Carol Craig came to hatchery and gave a presentation to staff and hatchery host.

Prosser: Bill Fiander

- Prosser hatchery 46,484 in basin Yakima Coho
- 196,053 Wahsoulgal fish this is out of basin fish. These are on station at Prosser
- Steelhead kelt 235 on station.
- This is a bad time of year when we start loosing fish.
- Broodstock collection starting in October.
- Modular restroom \$54,000 budget mod was from Lower O&M

Habitat: Scott Nicolai

- Working with Kelly on two SFBD applications now.
- Hanson Ponds meeting w/ regulatory folks. Additional planting will work w/Americorp on doing this.
- Open space applications meeting with Commissioners on this 175 acres.
- County Assessor sent a memo to the Commissioners and this is the reason for meeting because he is objecting to these.
- Mining task force meeting trying to set up. Criteria for gravel mines.
- Have been meeting on this for over a year. They don't want any criteria.
- We will submit our own criteria for mining since nothing can be resolved at these meetings.
- Presentation to local and the state at the SFBD meeting
- Checks in hand at the end of September.

Fall Chinook: Melinda Davis

- length difference made a difference in survival
- 5 year min accelerated getting bigger and releasing bigger
- 2 more years of doing
- Accelerated has shown better than conventional rearing.
- Can go accelerated instead of doing for another two-years, earlier and longer
- Released two-weeks earlier, because of the water concerns.
- First week of April can start seeing bass. But the 1st week of May in when the bass are really heavy.
- Do the analyst and get to John E. and Todd N.
- Can bag the conventional rearing by way of a decision document, and go with accelerated process for the fall Chinook.
- Have to see if we have enough data to do a publication.
- Would need to frame the work the has been done with fall Chinook.
- Any long term plans for in-basin take?
- Collection of fall Chinook were still stuck with the denile.
- 2005 brood is being implemented and have implemented for next years release. Have this implemented by next spring.
- Stiles instead of using the middle pond we will be using the upper most pond.
- Marion Drain we'll do 100% scale samples.
- Would like to get some age data.
- September 19th will start spawning surveys.
- Hand full of falls are already going through Prosser. These are early
- Cut off date some were identified as summers?

Klickitat: Bill Sharp

- Thanks to Cle Elum Hatchery crew for coming up. Third spawn enough adults for egg take.
- 600,000 smolt release.
- Castile is open we may want to stop seeding the river.
- Spawner surveys are being done.
- Next week will be peak of spawning.
- One redd above Castile.
- Running the screw trap.
- Will Conley ranked no. one for Klickitat Upper basin project.
- PCSRF below Little Klickitat
- In Channel structures.
- White Creek #1
- Teepee Creek #4
- Columbia Land Trust
- Construction for next summer.
- NOAA/Mitchell Act major construction for Wahkiacus
- Water surface water right two wells
- Two submersible pumps for these
- Rails-to-trails will work with Burlington Northern.
- Harbor will be coming over to do construction
- Pre-design is step two of master plan
- Our response to the IRSP, Doug Marker has the package.
- Mark Fritch forwards to IRSP.
- Maybe by December we can move to step two or January 2006.
- A lot of internal struggle on writing this.
- Pat and I working on funding break down of Mitchell Act and BPA. This is at Greg Delwich, David Byrnes and Mark Fritch's request.
- Transfer public disclosure for Klickitat County. WDFW has to comply with this. The hearing is set for December 14th 2005.

- Has anyone every discussed about having an open house or salmon bake for the public to come and see the hatchery facilities? Maybe this would open the eyes to Klickitat County that were doing positive things?

Data: Bill Bosch

- PC data capture at Prosser and the denile. It's up and operational.
- This week will start on fall Chinook and get posted.

Construction: David Byrnes

- Bill Baylock called in at 11:45 to discuss the Nelson Springs modular and cost.
- Package we got back from organization in Portland re-design.
- Change the footprint of building.
- Implication of cost of building we had last year.
- Cost estimate of \$170,000 of general civil.
- Quick summary update: site by county to flood protect has not or will not change. Even with a smaller building.
- ADA requirements from County for slants/ramps. Should stay in footprint and will not change.
- Sewer water requirements will remain the same.
- Wise not to reduce the civil costs of the last go round.
- Over all statement, cost of fuel has significantly increased and this will be higher for bringing materials in.
- Site Civil has a lot of line items.
- Reasonable number to rely on \$170,000
- What ever contractor you decide to go with for the modular you can certainly ask them to provide an updated site civil.
- They will be required to follow the County's requirements.
- David will talk to their construction people they work with Butler Modular.
- Will send research findings that were gathered to David Byrnes.
- William Scottsman in one of the bigger national firms.
- Will take a look at all these and pick which one we want to go with and submit. We already went through the three-step process and this is not a new submittal.
- It's revised as per their request.

Easton:

- Charlie my have more up date on this.
- This may be resolved, past the performance test.
- Ken Scheffler never experience a manufacture problem with any unit. When he got involved and begin to look at the problem for pump performance and could not find anything he went back to the manufacture which was Bryon Jackson.
- Redesign work CH2M had to pay for this.
- We are never going to buy or do business w/Byron Jackson.
- Report from Larry of Fishpro would like to get a letter from Charles stating these problems have been proven working and this problem has been resolved.
- This will pertain to all three sites.

Ac Site Outflow status:

- Keep out fall channel clear of debris.
- Outfall channel will discuss with Policy Group
- Except Jack Creek raceway is about 4-5 ft up stream.
- If we water up the system and keep at initial design flow.
- We need these fixed up and running before February.
- Improvements? Build up the concrete?

- Correction to the original design.
- PPFMS Carter Styne
- How would this effect detection rates?
- This is what we need to discuss.
- Pittag detectors can take some force, but it will hit a certain level where the detection will be off.
- Will look to Mark Rikker to see what the resolved issue is.
- Need to follow up with Don.
- Will this design affect any of our detection rates?
- David will need to speak with Christy on the formal rates.
- We have a confirmed list of that this problem exists.
- Don has concern...if you change velocity you change the rate of the detection.
- At Clark Flat we were getting design flow and this was fixed.
- 50/40 gpm flows at Jack Creek we have flow meters and Mel and Charlie witnessed the design flaw of water rising over the concrete.
- If the group is in decision with this topic it may be enough to contact Rikker for further discussion.
- Don will call in to the meeting to discuss changes. After reviewing Rikker's recommendations, we need to know if this recommendation will effect the pittag detection.
- Yes it will.....it will have a negative effect.
- It will work if you want to drop in your efficiency. A design fix that is being proposed.
- Were trying to understand the magnitude of this change.
- NMFS in Pasco can do the testing in a flume at their lab.
- Velocity in the tube will effect the detection with out lab test can't say significant?
- What is the limit on test? Live tagged fish.
- Increased velocity testing.
- Create no predictive going into overflow pipes to increase velocity sequins.
- Bypass option...rule of thumb, increased flow through 12" round pipe the most optimal. If we have detection lowered.
- We can enlarge pipe to increase detection.
- Force more water through 12" pipe to increase detection.
- Run water around system where fish are not going through (no effect) will contain high current efficiency amount of fish.
- Two 12" inch pipes 50/40 (but not through pipes).
- Original design was to be 50/40....been running at less.

Budget:

- Tracking Council process for 2006 budgets.
- This stuff is pretty much nailed down.
- Discussion at council for 2007 process.
- Discuss trade off of project structure or look at negatives and positives.
- YN could be a single proposal.
- 2007, 2008, 2009 solicitation.
- Will try and get Sabrina here in October for next Policy Group Meeting. Melvin will send her another e-mail.

No Policy Group Meeting held in September 2005. (could no fit everyone's schedule)

NEXT MEETING: October 5th 2005 at Nelson Springs.

Meeting Adjourned

**YKFP
POLICY GROUP
MEETING**

**MINUTES
FOR**

September 2005 - No Meeting

NELSON SPRINGS

(No Meeting Held Scheduling Conflicts)

MEMORANDUM
October 2005

DATE: October 7, 2005
TO: Melvin R. Sampson
FROM: Carol S. Speedis
SUBJECT: YKFP Policy Group Meeting

The Yakima/Klickitat Policy Group met at Nelson Springs on October 5, 2005 at 8:52 a.m. In attendance were Melvin R. Sampson, Todd Newsome, Charles Strom, Dr. Dave Fast, Pat Spurgin, Bill Fiander, Bill Bosch, Patty Smith, Todd Pearsons, Scott Nicolai and John Easterbrooks.

AGENDA REVIEW:

- 2007 funding
- IRSP/Klickitat Tour
- Internal PAR
- Bill Sharp out on leave
- Melinda Davis is out on Maternity Leave

STAC: Dr. Dave Fast and Todd Pearsons

- Memo from Roy Beatty, draft new funding.
- BPA 2007-2009 confusing on priorities. What's important? M&E plus the ground projects?
- Columbia Basin Bulletin last week regarding existing funding. 21% wildlife, 9% reduction in implementation?
- These funding questions will be further discussed.
- Number of staff we need to cover in regards to the upcoming Internal PAR.
- How to construct proposals?
- They will pick key monitored watersheds.
- Third week in October, Tuesday and Wednesday the 18th & 19th. Council agendas to do guidance. Council is meeting in Portland on October 11th-13th. 2007-2009 projects are for one-hour 8:45-9:45 October 12th. Selection guidance and documents.
- October 19-20 Internal PAR at Cle Elum Hatchery Facilities.
- Todd Pearson will deliver an agenda at the end of the week.
- Mel will touch base with Paul. What's the role of CBFWA in this process?
- WDFW has an internal process where they want abstracts in November to be submitted to BPA. These are for new projects. This is as per Dick Stone.

IRSP Tour: Dr. Dave Fast

- ISAB was held on September 27th. Three days of meetings for transition.
- 10-12 people – ISAB which are switching to IRSP. Rick Williams will stay with the IRSP but, will not be the chairman.
- Met at Lyle Falls, then to Wahkiacus to give power point presentation.
- Joe Zendt and Will Conley gave their reports.
- Mel cooked up some salmon for lunch.
- We didn't make it to tour the Hatchery.
- The group was impressed by what opportunities are there.
- Responded to their review of the Master Plan. Waiting for their response.
- Overall the tour went well. We do have a new IRSP group.

OPERATIONS:

Cle Elum Supplementation Facility: Charles Strom

- 630 adults transferred to Cle Elum for the 2005 season. Total adults mortality adults was 60 (9.5% (19 pre-spawn morts + 41 post-spawn morts).
- Estimated egg take for 2005 brood.

Cross Type	Estimated	#Female #male	Estimated eggs
	Egg takespawners	spawners	per female
WW	963,275 241	117 adults + 19 jacks	3997
HH	164,478 45	22 adults + 4 jacks	3655
Total/average	1,127,753	286	162 3943

- 2004 brood end of month samples for September 807,612 on hand @ 62 fish/pound. Total 18 raceways (16 WxW, and 2 HxH. End of September Hi sampled at 52 fish/pound and Low growth group sampled @71 fish/pound.
- Marking and tagging operation will start October 24.
- Chiller turned on September 6, 2005
- Treated ponds via flush method starting ponds lowered to half depth on September 7, 2005 and them raised on September 11. Ponds lowered again on September 16 for a seven day period and raised on September 23.
- Fish transferred to spawning channel on September 14. A total of 30 wild fish comprising of 12 wild males + 16 wild females + 2 wild jacks and a total of 28 hatchery fish (13 hatchery males + 13 hatchery females + 2 hatchery jacks) were placed in channel.
- Don Larsen used 8 wild females (4 males and 4 females) for precocial study. Samples were taken on September 27.
- Attended Pisces training held at Toppenish on September 15th.
- Several tours tiended by hatchery host including Selah and Cle Elum grade schools, and Environmental Ed Program. Cochran's left for Florida on October 1, 2005.
- Turned off well #1 on September 20 and well #5 on September 22.
- Generators at Cle Elum serviced by NC Machinery on September 28th.
- Simplex Grinnel provided yearly maintenance inspection on September 29.
- Pipe delivered, screens are being fabricated and backhoe set for bypass start up on October 10.
- TSI started upgrade on hatchery SCS system

Prosser: Bill Fiander

- Prosser Yakima Basin in basin coho 46,300
- Washougal 2004 fish 195,500 on station. Moved to acclimation site in spring
- Restrooms are up and operational.
- Steelhead kelts approxamatly 199 at Prosser.
- October 19th, Wednesday shutdown Chandler Canal, plus going and rescue fish in canal on the 19th. On the 17th will start shutdown.
- Waiting to hear from Scott Cline, BOR already ok'ed this date.
- Need truck and driver that we will get from Cle Elum Hatchery.
- Marion Drain, canal will be lowered on the 17th and the fish wheel will go in on the 19th for broodstock collection.

Habitat: Scott Nicolai

- One land owner wants to keep Powell Ditch on his property and other land owners don't want it?
- At last meeting Scott informed chances of getting this funding is pretty low, unless you get rid of Powell Ditch.
- Open space hearing with commissioners.
- Official hearing 1st of November with the Commissioners.
- 100% tax reduction.
- Holmes Property Title office is waiting for excise tax form from tribe. Will be done this week.
- Kelly meeting in field with Todd on SFB application. Local lead entity. 163 acres in Easton
- \$460,000 toward acquiring this property.
- Need to get cost share from BPA. Will speak with David Byrnes.
- BPA is getting appraisal done, have not received any numbers yet. Run acres is the name of the property.
- Kelly and Scott are working on proposal with BOR (Scott handed out Lower Cle Elum River Flow Modeling Project Draft Scope) asked for tribal assistance to help in watershed storage reservoir.
- Suncadia donated a huge easement on this property, so if we were to have a flood no one would get hurt.
- Next few weeks we have field work (Kelly & Scott).
- Will float section 31 with Hank Fraser. This is land we own upstream from the hatchery. Side Channel Habitat.
- Hank Fraser working with land owners in Squak Creek property.
- Other SFB project Courier and Resser Creeks got funded.
- Big Woody Debris project didn't fair to well.
- Charlie's labor crew revegetation will work the week of October 17th.

Coho: Todd Newsome

- No coho at Sulfer this is due to Roza being shut down.
- Have not seen any coho while doing surveys. Only down at Sunnyside.
- Tanum purchase went through this is a done deal.
- Boone Pond approved for \$47,000 grant money and Bill Boone is also putting some of his own money to improve this pond.
- LaSalle is going, waiting for water permit to come through.
- We got two boats out doing surveys.
- Melinda has been in once a week.
- 100 coho females (needing to get)
- 20 fall Chinook tags out.
- Denile Trap collection of broodstock report on left bank.
- Pull board, it was replaced on Monday but, didn't fit well? Got warped? So Travis Hull is fixing.
- Coho are trying to jump.
- A few Falls are coming through the denile, mostly coho and steelhead.
- 13 lb steelhead came through the denile trap on October 4, 2005 (nice fish).
- Coho look nice that are coming through.

Data: Bill Bosch

- Keeping up with spawning data.
- Tammy aged one at six-years. This would have been 99 broodstock. Will double check to see if this was aged by both Tammy and John Sneva.
- Still working on paper phase I feasibility on Coho. Have till December 20th to submit.
- Spring Chinook executive summary.
- Updated Prosser counts. Once a week.

Construction/Facility Maintenance/Mitigation: Melvin R. Sampson & Dr. Dave Fast

- Nelson Springs, past two months have been coordinating with David Byrnes at the Policy Group meetings. Byrnes wants to get last three processes together.
- Leading up to phone conversation with David on October 4th compile the three factors.
- Second phase planning design (done) submitting \$1.2 million denied funding.
- Agreed to continue by option of modular facility and completed this package which came out about \$600,000. A summary status that we have completed.
- Ground, prep, demo is about the same.
- One this is done maybe two weeks.
- David B. recommends meeting with Mark Fritch and Mr. Cassidy first.
- EASTON PUMPS:
- Released report from fishpro. Charles e-mailed to appropriate personnel.
- Correct over flow problem next week as per discussed.
- Pipes delivered October 4th.
- CH2M Hill paid for.
- Working with Bill and the maintenance crew (Travis Hull).
- May start next week Tuesday.
- Met with Concord and they maybe the construction supervisor to oversee project.
- Will use the tractor at Clark Flats instead of the backhoe.
- Pat Spurgin had questions regarding Concord overseeing project? Subcontracting?

Budgets/Contracts: Sabrina Keen & David Byrnes (both absent)

- 06/07 budget status update ---- proposed process is out on website

NEPA: Patty Smith

- Nelson Springs cultural resources work has not yet been done. Will request a survey by Steve Tromley, BPA Archeologist, so we can complete the review and get clearance from SHOP and, it won't come up later as a surprise or cause delay in the construction project. Mel suggested we contact David Powell YN Archeologist, TFW, to join in survey work.
- The weed guy. Dirk should spray the entire roadway. Scott already e-mailed Dirk for next year.
- NEPA process was done for this already and just follow the guidelines.
- Year-end report of what chemicals and amounts were used to spray weeds, will be due to BPA, Nancy Weintraub – KEC-4. Scott said he would submit the report.

**NEXT MEETING: November 9th, at Nelson Springs
@8:51 a.m.**

M E M O R A N D U M

November 2006

DATE: November 14, 2005

TO: Melvin R. Sampson

FROM: Carol S. Speedis
SUBJECT: YKFP Policy Group Meeting

The Yakima/Klickitat Policy Group met at Nelson Springs on Wednesday, November 9, 2005. In attendance were: Melvin R. Sampson, Pat Spurgin, Dr. Dave Fast, Joe Blodgett, Bill Sharp, Charles Strom, Bill Bosch, Todd Pearsons, Patty Smith and Todd Newsome.

AGENDA REVIEW:

Quantitative Objective – Todd Pearsons
Fall Chinook – Todd Newsome will do report for M.Davis
Bill Fiander out on leave, Joe Blodgett will do report for Marion Drain.

STAC: Dave Fast & Todd Pearsons

- 07-09 Internal PAR was held on the 19th of October. This was cut short to one-day.
- IRSP Doug Neeley gave presentation on Pittag detections.
- Working on way to better this process.
- Discussed the 70-15-15 process which is ANAD, Replacement and Wildlife.
- Also discussed the 70-25-5 (on the ground, M&E, Mgmt.
- These are overlapping processes for funding. The Council did not develop or agree with the 70-25-5 process.
- Patty O'Toole is the person whom sits on this council and decides these...
- Ranking proposals for consistency.
- The Council will be the one with the decisions.
- Proposals are due January 10th, 2006.
- Patty Smith said she will speak with Greg Delwiche on the 70-25-5 process. Update: Patty spoke with Peter Lofy and David Byrnes on November 10. David will contact Dave Fast & Mel Sampson to discuss strategy for 2007-2009 proposals.
- This sounds like a good idea since we don't have a COTR representative at the meeting
- January 12, 2006 Statement of Work, Proposals and Budgets are due for 07-09.
- 07-09 is a major change from what they have done in the past. In 06 BPA just said to keep the same as in 05.
- **QUANTITATIVE OBJECTIVES:** Todd Pearsons
- Setting quantitative objectives for YKFP.
- Requires quantitative objectives in each project
- Solicitation of new projects
- Proposal objectives.
- It's going to cost us if we don't add quantitative objectives.
- There are different kinds of benefits cost for Q.O.
- We can run through.
- Todd Pearson showed a slide show on Mgmt Options, Funding, and Guidance & Project Benefits.
- If we set Q.O. what will happen to our funding.
- On the west side they place their Q.O. real high.
- Interim goals 5-10 year goals.
- We as co-managers are setting the Q.O.
- We determine the long term goals.
- Supplementation and habitat issues.
- Doing a Q.O. we will be adding these in our proposals.
- Money given to the west sides will have a meeting with Dan Diggs, USFWS. He will be implementing some these projects.

- Funding these internal for starters
- HSRG Review

Naches Spring Chinook Egg Update:

- Eggs are doing fine.
- Certified and taking a load to Cle Elum Hatchery today.

Marking Status:

- Meeting with Andy Dipman and Mark next week.
- Started marking on October 24th and Pittag operation on November 3rd.
- Four raceways.
- 5 raceways completed
- 13 more to go and will go into December.
- Crew of seven can do 7,000 a day. (estimate).
- Pittag digitized before entered into fish.

Run Estimates: Bill Bosch

- All aged data is in.
- 2006 forecast is for 6,700 adults to river mouth (age 4 and 5)
- This is disappointing. [we sure wouldn't be disappointed with a run of 67,000...we will be with only 6,700]
- Margin of error estimated to be +/- 37%
- This year were working with a jack count of 700.
- This run did not migrate out during a drought year (2004).
- Overall about one-third are forecasted to be Cle Elum hatchery fish and the rest as wild/natural.

OPERATIONS:

Cle Elum Supplementation & Research Facility: Charles Strom

- Inventory and splitting 2005 brood eggs into treatment groups start on October 31. Schedule to be completed by November 10.
- 2004 brood end of month samples for October estimated that we have 806,938 on hand @42 fish/lb. total 18 raceways (16 WxW, and 2 HxH). End of October Hi sampled at 37 fish/pound and Low growth group sampled @ 50 fish/pound.
- All bypass work was completed at each of the three acclimation sites.
- Marking and tagging operations started October 24. Pit tag portion completed on November 3 with 2,222 pit tags inserted in juveniles from each of the 18 raceways. The marking and elastomer portion also started on October 24 and have completed marking on ponds 1, 2, 3, and 4.
- Triad electric performed annual inspection of main facility and acclimation sites.
- Ameri-corp was here and performed work habitat work for Scott Nicolai and hatchery grounds.
- Vernon and Simon assisted Prosser crew in removing Fall Chinook from Chandler Canal.
- Don of Four Season's performed fall inspection of heating systems for the entire facility on October 19th. Winterized facility irrigation on the same date.
- Day Wireless performed annual inspection of all Motorola equipment on October 28.
- Snow tires and equipment installed on all vehicles.
- Two snowmobiles taken in for yearly service.
- Mark Johnston and crew distributed carcasses from 06 spawning season in local streams and rivers.

- Annie Jo and Quinn James received cross-training at Bonneville Fish Hatchery on October 31 and November 1. They assisted in sorting, sexing, and spawning Coho salmon.
- Several members of the Yakama Tribal council and DNR Administration staff toured the facility on November 4, 2005.
- March 15th will be bringing on the brood, instead of April
- Five month on host position, instead of six months.
- Received ten applicants already.
- Not advertising for October. Will run from May 1st through September 31st.
- Will make selections in December.

Prosser/Marion Drain: Joe Blodgett

- Job Corp came out and helped rescue fish from canal. 200 fall Chinook, 1 steelhead and 2 Coho in canal this year.
- Left side ladder shut down.
- Enough brood. 90 females and in incubators.
- 350,000 eggs
- Marion Drain fall Chinook still has fish wheel.
- Spawned ten females and hopefully ten more this afternoon.
- Mainly males in Marion Drain.
- Coho collect later in run.
- Came in shorter spans.
- Trying to collect all wild. All males are wild not many wild females. So we used hatchery females. Spawned yesterday 11/8/05.
- Steelhead meeting on the 17th. Set date for release.
- Still 200 left.
- Release more in release group.
- Percentage of survival is down.
- Construction.....we have a rest room.

Coho: Todd Newsome

- carcass this year taking the heads and cutting off. Cooking and then freezing.
- Toppenish, Simcoe and Satus and some in the Nile System.
- We Cut heads off, gut, cook at 90 degree heat, freeze, then place out.
- This protocol was received from Susan. She done the testing.
- This process takes out the bacteria.
- Doing Coho surveys.
- Denile trap, Holmes fish clipped two-years ago.
- 200 LV clipped (133 over Denile).
- New Cascade Irrigation turned the water on. Nine redds; radio tagged dish did come in.
- 2 cfs will drop down if the water is shut off.
- 64 redds in Naches, 9 at Holmes and 15 in Mainstem of Holmes
- 233 jacks highest since 1999. pit tagged from Stiles.
- Naches and Wenas doing today
- 500 returning hatchery fish, returning last year.
- Next year we should do better.
- Wild fish hopefully should be better.
- Mainstem down below got muddy, lost a lot of redds.
- Next week will start pit tagging at Eagle Creek Hatchery.
- LaSalle water rights application is done.
- Contract for fence is in.
- Hopefully in two-months this will be up and running.
- Will try and make it to the steelhead meeting.

Fall Chinook: Todd Newsome for Melinda Davis

- Monday, December 5th Melinda Davis will be back from maternity leave.
- 200 redds from Granger to Emerald.
- Left bank once opened up the fish, will rush through. Not much through the denile trap.
- All fish are accelerated right now.
- Once Melinda returns and decides she wants conventional, we can do this.
- Decision Document needs to be done this action. Will need to let Melinda know and have this document done.

Klickitat: Bill Sharp

- Meeting in Cooks, WA USGS, WDFW will be there re: White Salmon.
- Where do we go with the Master Plan re: Lyle Falls
- Call Eric and Rick Williams on their response.
- Hatchery transition MOU & Lease Agreement is going through the YN Agency system right now.
- Tweit is interested in the signing ceremony.
- Two weeks ago tour with State Representatives and other people. Showed them Klickitat Hatchery and that we have a good approach and think this went well.
- Castile Falls is wrapped up.
- Pump in Shallow wells 100% design wells in place.
- Tony Grover, Guy Norman Regional 5. Written agreement County and state.
- We do collaborate a lot with Region 5 on bull trout.

Data: Bill Bosch

- working on Coho papers
- 07-09 proposals getting ready for this process.
- Working with Charlie at the hatchery

NEPA: Patty Smith

- Sent off the Tillman Creek JARPA permits on November 8, 2005.
- Coho project, I proposed we prepare a supplementation analysis to the FWIP EIS rather than wait for a BPA Hatchery ROD. Taking longer than expected in developing the Hatchery ROD and this may help us get started sooner.
- This is a new process, therefore we will develop our own template.
- I will come up with a NEPA project schedule for Coho supplementation Plan.
- Need a writer and editor, will contact Judith since she knows the document.
- Completion of this SA should provide environmental coverage for the Coho plan through 2010 (Feasibility Phase 1). No further NEPA would be needed until ready for Phase 2 Production.
- If this is a good plan, we will need to do a decision document approving. I can then go ahead and get started.
- Will do a draft list of things that will need to happen.

1:55 p.m. David Byrnes, BPA, COTR called in by phone to see if any one had any questions for him?
Todd Pearson's spoke with him.

Meeting adjourned:

**NEXT MEETING: December 7th 2005 at 8:50 a.m. at
Nelson Springs**

MEMORANDUM

December 2005

DATE: December 14, 2005
TO: Melvin R. Sampson
FROM: Carol S. Speedis
SUBJECT: YKFP Policy Group Meeting

The Yakima/Klickitat Policy Group met at Nelson Springs at 9:00 a.m. on December 12, 2005. In attendance were Melvin R. Sampson, Dr. David Fast, David Brynes, Pat Spurgin, Melinda Davis, Todd Pearson, John Easterbrooks, Scott Nicolai, Bill Fiander, Chris Frederickson and Bill Sharp

AGENDA REVIEW:

- Todd Newsome and Bill Bosch will not be attending meeting today. Working with Steelhead Kelt
- David Brynes has a conference call at 10:00 a.m.

BUDGET: David Brynes

- 06 BOG (Budget Office Group)
- Decisions made by BOG could be requests of fund transfers, reschedule of funds.
- Status of request of new funds for expenses budget will go to Council. (for Scott's projects).
- Expense funding available for same projects.
- 07-09 budget advance copies of proposals
- January 10th 2006, deadline
- The BOG meets on a quarterly basis. Next meeting maybe held in February 06. Can find this information out on the CBFWA website.
- Next M&E Budget yearly contract renewed for 06 (12 month budget)
- Fiscal Year and Not Spending Caps
- Three- year picture.
- Focus on the contract
- This is just like the process we have already been doing without the spending caps.
- David Brynes has been working with Regional Relations in Boise ID. He could be staying on a six-month detail in the Portland area. Working with public interest groups regionally.
- No one has been selected to take over David's duties as far as Fish and Wildlife Projects for the YKFP.

STAC: Dr. David Fast and Todd Pearson

- 07-09 proposal Charles, Mark J., Dave, Bill Bosch have been working on for O&M.
- M&E is shaping up and should wrap up soon.
- Mark J. and Todd P. are having trouble making since of 07-09. a lot of confusion that needs to be cleared up.
- Proposal for release of spring Chinook to sites in September.
- State review proposal and made comments

- Chandler was shut down end of November. And will be down for four weeks. Need Chandler up and running to make estimates of migration.
- Don't run the detectors in the winter.
- **Quantitative Objectives**
- Chris Fredrickson came into PGM to run numbers for the Yakima.
- Updated numbers sent out Friday.
- Only comments came back from Bill Bosch. (Table #1 hand-out)
- Numbers generated from two different models. (upper Yakima river)
- EDT model spits out a model of smolt to adult return rate. We have seen 86-99 less than optimal returns.
- Ran for 100 generations.
- Trying to figure out harvest rates, it's difficult. Two harvest seniors max explorations in zone 1-5 and ten year goal min and max.
- Bill Bosch's comments upper Yakima fish, wild and hatchery are the only numbers he did. (Chris F.)
- 10 year goal smolts 03-01 return year.
- 2003-20013 minimum average from adults delays by 2 years.
- 20 year goals 50% properly function. Does not include increased juvenile survival rates. Long term 100% PFC. Historic mainstem goal.
- These would be co-managers recommendations/proposal for quantitative objectives and goals.
- Need to come together and make these decisions, in this group. (Policy Group)
- Would like to see a narrative that people can understand be attached to the table presented.
- This is specific to Spring Chinook only.
- Group can also be saying that these goals are being met.
- Chris F., numbers expressed to Upper Yakima Supplementation.
- Entire Yakima Basin with all three stocks with supplementation.
- Goals and objectives higher to what were achieving.
- Average SAR 86-99 -v- 2001-2004 to increase all of these.
- Will do Decision Document and number will be 2005-01 along with solicitation document
- Todd P., will do this and get it e-mailed to Melvin
- **Marking Status**
- Will be done Thursday, December 15th and clean-up on Friday, December 16th.

OPERATIONS:

Prosser: Bill Fiander

- Chandler canal shut down November 30th, repairs to canal by BOR. Shooting for four-weeks for repairs on screen work and canal work.
- Can crank the gate a little to get some water, made some adjustments, because we were pumping low water.
- New well placed in and we have more water now.
- Steelhead kelt release at Mabton.
- Reconditioned these fish all year.
- Twenty will be held.

Cle Elum Supplementation & Research Facility: Charles Strom

- 2005 egg inventory transferred to vertical incubators = 896,916 (802,666 wild + 94,250 hatchery). Combined egg loss for two groups was 7.8%.
- Fish on hand for 04 brood is 805,682 with an average size of 39 fish/pound (35 for hi and 44 for lo treatment).
- The marking and tagging operation is scheduled to be completed by the end of this week (December 16).
- Juvenile raceways are treated with formalin after each raceways has been marked.

- Clean up of incubation is ongoing with a number of iso-buckets ready to be cleaned as they were already disinfected.
- Hal Owens serviced hatchery signal lights.
- Last two sleds were serviced by Sportland and are ready for winter season.
- Resident #1001 compressor for heat pump needs to be replaced. An estimate is waiting from Four Seasons of Yakima.
- Yakama Indian Health Services traveled to Cle Elum to issue flu shots to Cle Elum and Marking and tagging staff members.
- Two inch drain valves for wells 5 and 6 were replaced by Concord and in addition to those repairs the 12" flange located at the Clark Flat pit tag site was also replaced.
- Greg, D.J. and Quinn James attended Northwest Fish Culture Conference in Boise, ID.
- Vernon Bogar issued yearly evaluation.
- Interviews issued for the three temporary acclimation site culturist on November 27 and 28. Look to bring them on December 19. Phone interviews for the volunteer hatchery host were held on December 8 and 9. One more interview is scheduled for December 16 and after that the three summer positions will be filled.
- Rick Jones stopped in for an energy audit efficiency walk through of the Cle Elum facility on December 7.
- Have questions for David Byrnes on Pieces reporting.

Fall Chinook: Melinda Davis

- Adult returns over Prosser 1864 include juveniles.
- Total redds above Prosser 400
- Marion Drain 47 redds (pretty low for Marion Drain).
- Redd data preliminary pending more data entry.
- Redd counts below Prosser pending.
- No redds in the gap, couple of carcasses.
- Melinda handed out YKFP Fall Chinook Project "Accelerated vs. Conventional Rearing Treatments at Prosser Hatchery"
- This will be transformed into a decision document for accelerated fall Chinook with a few minor changes. Will also attach statistics sheet for further backup.

Klickitat: Bill Sharp

- BPA solicitations
- Wednesday Pat S., Dave and I meeting in Portland. Strategy on NEPA for Castile falls and Lyle falls ladder which IRSP recommended. (adult collection facilities)
- This is with in Master Plan process. Looking at different strategy.
- Address more M&E, a loop in step 1. M&E Infrastructure step 2 preliminary design.
- Patty and Nancy will look at both drawings for both sites. EA -v- EIS maybe use the foot EIS.
- While attending the Fish Culture Conference, had a chance to speak with Dan Warren. He may be able to work on or give assistance work on the Master Plan.
- Maybe we can get funding from the BOG to re-do the Master Plan?
- Will Conley's project is moving along, working on an extension to finish up project.
- Will start back to work in the spring of 2006.
- A list of questions was submitted to John Easterbrooks.
- Looking for lease agreement. Bill spoke with Elise of WDFW and no more signatures were needed and some language was to be worked on and this was a week ago Monday. Still waiting to hear back.
- John E. also left messages on Elise's phone and also with Bill Tweit.
- John will continue to work on this.
- Have concerns with IPA Fish Health contract. We have no actual contact/point person to turn to when issues arise. Bill Tweit has been the point person so far but, need someone that can commit to this.

Habitat: Scott Nicolai

- The Yakima Lead Entity strategy ranked quite a bit higher this year than last year.
- The Klickitat County Lead Entity strategy scored quite well.
- Submitted request to the Salmon Recovery Funding Board for cost share for acquisition of key habitat parcel in Easton Reach
- In negation to develop strategy for protection in Teanaway.
- Working with David Gerth or the Kittitas Conservation Trust on proposal to BPA.
- 48,000 acres of land owned by American Forest Resources. Logged majority of the forest with the exception of spotted owl areas.
- Last week Tuesday meeting with Suncadia Resort - 2.5 million dollars for protection of the Teanaway. Out side of riparian areas.
- Remaining lower Naches everything done here is under open spaces.
- Will pay taxes next year and that's it. No more after that. 440 acres. Had all these acres enrolled in open spaces. There are no structures on the property.
- Working with DOE and landowners. Getting bi-op for local landowners.
- Manastash Creek - Reed ditch placing screens in making a bad situation worse than it already is and still moving ahead.

Coho: Todd Newsome

- sent in written report with Melinda. (*will add as soon as I can, with final report.*)

CONSTRUCTION: David Byrnes

- Tillman Creek Mitigation moving forward JARPA will be done soon.
- Access road has four owners that cross the access road? Need to contract with each owner. This will happen on January, 2006.
- These are two hurdles that need to be crossed for Tillman Creek.
- John Wayne trail, we have access.
- Construction easement is what were waiting for to get equipment into access site.
- Nelson Springs? Waiting for David B's response
- David needs to sit down with Mark Fritch and then will get back with Melvin.
- This will role into 2007.

NEPA: Patty Smith (e-mailed me her report, unable to attend meeting. In Wenatchee)

- I'll have a Coho NEPA schedule together in the next couple of weeks for Todd.
- Working on Tillman JARPA with Seattle COE and Sheldon Associate. I've provided everything they need, but COE Bio had additional questions on wetland characteristics. Hope to finalize that quickly .

Meeting Adjourned:

Next Meeting: January 18, 2006 at Nelson Springs

MEMORANDUM

January 2006

DATE: January 18, 2006

TO: Melvin R. Sampson
FROM: Carol S. Speedis
SUBJECT: YKFP Policy Group Meeting

The Yakima/Klickitat Policy Group met at Nelson Springs at 9:00 a.m. on January 18, 2006. In attendance were Melvin R. Sampson, Dr. David Fast, David Brynes, Michelle Waylon (BPA newsletter), Melinda Davis, Todd Pearson, John Easterbrooks, Scott Nicolai, Bill Fiander, Charles Strom, and Bill Bosch.

AGENDA REVIEW:

- Bill Sharp will be in later
- Pat Spurgin is out on sick leave
- Patty Smith is out due to surgery
- Nancy Weintraub will be calling in at 1:30 to give update on NEPA issues.
- Michelle Waylon here w/David Brynes, toured the Cle Elum Facilities and Prosser Hatchery. Getting a sense of the Subbasin.

STAC: Dave Fast & Todd Person

- 2007-2009 proposal
- 2 ½ months putting together all proposals for submittal.
- O&M Hatchery Facility along with Management and Data. Finalized and submitted.
- 235 million in proposals
- 200 million on new projects
- Next October, discussions will be made on which proposals were selected.
- Todd Persons discussed a study that Steve Schroeder placed out for pedigree study. (not part of YKFP)
- This is all preliminary studies, but important enough to discuss.
- The Wenatchee Study was on Spring Chinook above Tumwater Dam.
- In order to do this study for a year would we need to have a decision document? Or having this in these months' minutes good enough?
- This would be a good year to do this, Charles has excess fish at the Hatchery.
- Fish will be ready in mid-March.
- Anthony can do the analysis.
- Todd will figure out how much fish we will need for study.
- A decision will be made in or by next months Policy Group Meeting.

OPERATIONS:

Cle Elum Supplementation & Research Facility: Charles Strom

- 2005 egg inventory transferred to vertical incubators = 858,716 (762,668 wild + 96,048 hatchery). Combined egg loss for two groups was 6.3%.
- Fish on hand at CESRF 805,008 for 2004 brood with transfer to fish to begin today with Easton and then Clark Flat on Friday. Average fish per pound at month's end is 39 fish per pound. New total is estimated fish on hand after marking and tagging operation which concluded on December 15, 2005.
- Quality control samples and pre-transfer samples completed during the first week of January 2006.
- Freezing conditions on December 16 warranted the shutdown of two river pumps because low wet well levels because icy intake screens. Wells 1,2 and 4 were turned on to supplement the temporary loss of the two river intake pumps.

- Rick's RV serviced all travel trailers and had to replace cushions and mattress at the Clark Flat site due to rodent damage.
- Raincountry refrigeration serviced condensers and chiller in December.
- TSI serviced data control systems at the Easton and Clark Flat sites on January 12, 2006.
- Picked all three hatchery host positions for the 2006 season. Couples are from Arizona, California and Washington.
- David Byrnes asked Charles that he request copies of their Birth Certificates for each couple. Also need copies of their Drivers License and Passport if they have one. This is for insurance purposes for BPA.

Prosser: Bill Fiander

- Chandler canal watered back up January 6th.
- Yakima in-Basin fish 46,100
- 194,400 Washougal fish (late run)
- Mitchell Act fish 1st of March
- Ponding 250,000 fall Chinook in late February.
- Chuck Carl will help Upper O&M move fish. Will be taking backhoe up to help Charles at Cle Elum facility.

Coho: Todd Newsome

- Open screens April 5, 2006 forced acclimation.
- All four sites
- Boone Pond had mergansers and this year we need to keep better eye on these predators.
- 200,000 Washougal fish January 1st Coho.
- An additional 100,000 eggs from Eagle Creek.
- Holmes had the best survival rate out of all the rest of sites.
- Adult spawning 65 plus redds in Yakima above Roza.
- 19 entire Holmes gallery, 6 more than last year.
- 70 redds at Nelson Springs.
- LaSalle is almost done. Bldg and fence is up.
- Still working on water permits.
- Later this week start trenching for the pipe.

Fall Chinook: Melinda Davis

- on the down low right now as far as fall Chinook.
- Waiting to pond
- Scale data back from Marion Drain will need to look at age structure.

Klickitat: Bill Sharp

- 2007 – 2009 proposal
- M&E activities sediment samples for the year being wrapped up by crew.
- 10,000 cts at Klickitat, one trap was damaged.
- 1.4 million in SFBD money for Will Conley's project (all four projects).
- Habitat management project is very busy FY06 to start NEPA work for Lyle and Castille Falls for February Council Meeting.
- Wrapping up design report.
- Memorandum of Agreement was signed and completed between YN and WDFW for Klickitat Hatchery.
- IPA's wrapped up and need signatures
- Hatchery will be administrated by the Yakama Nation.
- Ron Ballard and Jason Rau will alternate on attending and reporting to the Policy Group (occasionally)
- Hatchery issues 100% adipose clip of fall Chinook.

- This will be interesting to see if this can be accomplished.
- Bill Sharp will e-mail PDF file to David Byrnes the report done by Harbor Engineering.
- M&E proposal change was made.

Data: Bill Bosch

- Quality Control Database
- Quality Water report sent to DOE
- Finalize dam count for Prosser and Roza to get set up for this year.
- Looking to see what we did with kelts last year
- Update spring Chinook tables for annual report

Habitat: Scott Nicoloi

- Request for Yakima Side Channel submitted
- Boone property, City of Cle Elum meeting last week
- Inter change pond, going to be worth a lot more.
- Met with Greg Hall, Thorp reach down river from Gladmore Park.
- Run Acres? Where are we on this?

CONSTRUCTION/MAINTENANCE/MITIGATION: David Byrnes

- Replacement Facility for Nelson Springs, modular information was submitted.
- The price range is half of what the original price (\$600,000). Original submittal \$1.3 million by Sherry Davis
- David said he would like to hold out a little for this project. It's being discussed in-house at BPA and it still could be submitted as a 2006 cost?
- Tillman Creek
- Next two weeks confirm on ownership to access road to Tillman Creek.
- There were four ownerships on this road.
- As soon as legal issues are done. We will not negotiate a price until we know the value.
- Patty has been working with this project.
- Spring/Summer 2006 is when we would like to be in position to work there
-

NEPA:

- 1:30 Nancy Weintraub called in on Bill Sharps cell phone. (he has conference call on his cell phone).
- Patty has no update, she has not called in to check with the office (out on leave for 3-weeks)
- Nancy will check to see where were at on the Klickitat for NEPA strategies.
- Lyle, we have cultural issues. (moving a lot of debris)
- Information John provided has there been a cost yet? If any she, has not looked at yet?
- Nancy thinks that these should be independent and kept on a separate track.
- Castile Falls (1 month) cultural survey already done.
- Lyle EIS 18 months or could be sooner
- Bill S. If you need anything from Nancy, when would your need by?
- Looking at April 1st as a reference start date.
- NEPA for Tillman Creek, waiting for the JARPA to come in.
- Three weeks we should have a good understanding where we are.
- Coho, need to get with Patty to see if she spoke with Judith Woodward
- Nancy will also speak with Judith. Judith is temporarily located in Portland. But, will eventually be going back to Canada.
- Judith is very busy right now working on the mid-Columbia Coho.

NEXT MEETING: Thursday, February 16th, 2006 at Nelson Springs.

Meeting adjourned.

YKFP Policy Group Meeting Draft Ageenda
Nelson Springs, USofA, January 18, 2006: 9:00 A.M.

1. Call Meeting to Order, Mel
 - Agenda Review, Additions, Modifications
2. STAC, David F., Tod P.
 - 07-09 Proposal Submittals
 - Other
3. Operations
 - Cle Elum, Charlie
 - Prosser/Marion Drain, Billy F. -Habitat, Scott
 - Coho, Todd N.
 - Fall Chinook, Melinda
 - Klickitat, Bill S.
 - Data, Bill B.
4. Construction, Maintenance, Mitigation
 - TBA
5. Budgets, Contracts, Proposals, BPA
 - 06, 07 renewals
 - 07-09 proposal submittals
 - Other
6. NEPA, Nancy W. (Hi Nancy!)
 - Nancy will call in @ 1:30 p.m.
 - List Agenda Items
7. Other
8. Next Meeting Date/Place: _____

MEMORANDUM
February 2006

DATE: February 21, 2006

TO: Melvin R. Sampson
FROM: Carol S. Speedis
SUBJECT: YKFP Policy Group Meeting

The Yakima/Klickitat Policy Group met at Nelson Springs at 9:00 a.m. on February 16, 2006. In attendance were: Melvin Sampson, Dr. David Fast, David Byrnes, Todd Pearsons, Charles Strom, Bill Fiander, Patty Smith, Scott Nicoloi John Easterbrooks, Melinda Davis, Bill Bosch and Pat Spurgin.

AGENDA REVIEW:

- Pat Spurgin has a hearing this morning and will be in when finished.
- Bill Sharp is out of town. (Mexico)
- Todd Newsome is out in field
- End of January Interim Report for DOE? David has not got any feedback yet will contact Jeff.
- David would like to have everyone submit a list to Patty Smith so she can get caught up on issues that were discussed. Everyone on same page.

STAC: Dr. David Fast and Todd Pearsons

- Dates for PAR proposed for June 14 & 15, 2006.
- Will be held at CWU again and Dave will check to see if these dates are during the break.
- Council meeting will also be held in Boise, ID the week of June 13-15, 2006.
- Patty wanted to know if there was a contract in place for the PAR for payment
- These yearly PAR meetings are scheduled under the Management budget.
- Grad student from British Columbia was inquiring about doing acoustic tags and tracking. She was directed to speak with Bill Bosch.
- This was discussed and could possible happen this spring at Prosser
- Dave Fast will send out more information to the Policy Group.
- Todd Pearsons in regards to the Steve Schoder evaluation letter. Decision to be made at this months meeting. Todd recommends that we do this.
- Was discussed and everyone is in agreement to do this. We have plenty of fish 40,000 – 50,000.
- Steelhead collection on the Naches (juvenile samples)
- Melinda Davis said this will be done this year and should be starting up in a couple of weeks (screwtrap).
- Steelhead Assessment that was sent out statewide. Jim Scott was the lead on getting this document out.
- In this assessment they mention the Steelhead kelt reconditioning. This will be a document that the group will like to take a look at.
- Environmental Compliance for M&E. Patty will get with Nancy W. to see where were at on this, if any changes were made.
- Spawning channels have small numbers.
- Incubation towers getting wrapped up.
- What are we going to do about the duck? The merganser is still in the hatchery raceway.
- Dave Fast will speak with Mark and get him moved out.
- Finalizing re-draft, should be seeing new draft. Significant changes to: sex, age and size compensation is different and spawn timing is different.
- Fitness impact is not all that great.
- Looking at results section. We believe that adding traits together is how he doing this.
- Modeling results will be in the paper.

OPERATIONS:

Cle Elum Supplementation & Research Facility: Charles Strom

- 2005 fry are hatched and incubation temperatures are increased to achieve mid-March ponding.
- Chuck Carl and Ford Excavation cleared snow at the Jack Creek location prior to fish transfer. A second snow removal was completed by CESRF after another 18" covered the ground after the initial snow removal. Jack Creek generators fire up on January 30, 2006.
- Fish on hand at CESRF 92,938 totaling two raceways destined for Jack Creek when the weather breaks. Four ponds transferred to Jack Creek on February 13, 2006 for a total of 184,571 juveniles at the site.
- 280,915 juveniles from 04 brood transferred to Clark Flats on January 20-13.
- 273,725 juveniles from 04 brood transferred to Easton on January 18 and 19th.
- 12 ponds set up for 2005 brood with 6 left to clean and set up (cleaning will start once ponds are transferred to Jack Creek). The pump to the electric pressure wash needed to be replaced at a cost of \$1100.00. This slowed the pressure washing of ponds down for short period.
- Jack Creek UPS went out of February 14th replaced one battery seems to be working.
- Weather knocked power at momentarily at the main facility and shut well #1 down. Well #2 was started in its place. The same winter storm knocked power out at the Easton site for 14 hours and the generator supplied power until commercial power was restored.
- Bypass system at all sites are working and preventing water from breaching concrete weir.
- HVAC system was down at Jack Creek. Birds got into system and we needed to get them out and have it repaired.
- HxH 30 more per raceway.
- Last two ponds will be postponed till a later date. Due to cold weather, freezing intakes.

PROSSER: Bill Fiander

- YKFP maintenance crew assisted in snow removal.
- Prep for coho acclimation
- Work with fish hauling WDFW
- Fish health done preliminary release at Eagle Creek National Fish Hatchery.
- One raceway at Eagle Creek NFH to Prosser next Wednesday or Thursday 100,000 fish (coho)
- Last week in February 28th – Friday 3rd In Basin Coho moved to Acclimation sites. Stiles, Holmes, Boone.
- March 6th Eagle Creek fish moved to acclimation site.
- Fall Chinook marked at Little White end of March
- First week in April delivered to Prosser/Acclimation and released
- Working on pittag detector.

HABITAT: Scott Nicolai

- Yakima Side Channels submitted November-December
- Next week Fish-4 will hear request.
- Hopefully will have finding after the hearing and can purchase properties.
- Fish bypass work for Todd Newsome and habitat work.
- Small environmental grant. Fifth graders this spring to go and do work with/for us. This work will coincide with the release of the fish.
- These school kids are raising these fish in their class room. 150 coho in class room.
- Mt Stewart school is also raising fish and release. They said these were spring Chinook. Will have to check into this, they may be coho.
- Policy Group discussed and said that it's o.k. to release these fish into Holmes. These are in-basin coho.
- Any work in and around Holmes is the property of the Yakama Nation. Were enabling these projects to be done there. Be mindful that we are allowing projects like this to be done.
- The restoration work being done is funded by NOAA
- Does a NEPA still need to be done as per BPA?

- Scope of work for this project will be sent to Patty.
- Tentative date for this action will be middle of March, 2006.
- Meeting to see if we can get funding for another Side Channel Project.
- Resource Advisory Committee meeting end of March. Jeff Jones is on this committee.
- BOR list of projects, working with Tom Ring on comments.

FALL CHINOOK: Melinda Davis

- Prepping acclimation sites
- Biomark will be at Prosser on the 27th for a meeting on fall Chinook detectors.
- David Byrnes wants to know why were doing work with Biomark and not PFMC? This concern comes after the incident at the Cle Elum Hatchery that work that had been done by Biomark and had to have PFMC come and fix.
- Should we be paying Biomark to come and install detectors and also pay PFMC for coming into to fix their problem?
- Main thing is to get these set up, we want to get a real good handle on fish leaving. Sooner the better.
- BPA has a standing contract with PFMC and not with Biomark.
- We didn't have any detection in the past and numbers were taken at McNary.

DATA: Bill Bosch

- Coho manuscript going on 1-year now.
- Minor revisions and hopefully published this spring.
- Working on dam counts updated on DART.
- Getting set up for 2006.
- 2005 data in annual report.
- Collection schedule for 2006.

CONSTRUCTION/MAINTENANCE/MITIGATION: David Byrnes

- Well report John Easterbrooks wanted explanation of paper written on water decline and by how much.
- Jeff called in by speaker phone to give some explanation of how and why the paper was written like it is.
- Observation wells, different levels for each well.
- Report went to Department of Ecology.
- There is not an impact where it affected anyone.
- Always a reduction clause. BP A has a three-year contract with CH2M Hill and everyone agreed.
- Tillman Creek
- On going activity, still dealing with the four property owners for the crossing into Tillman Creek.
- Land owner, City of S. Cle Elum, Ellensburg Cement and Puget Sound Energy.
- Steve Young, General Contract will move the soil from Tillman Creek. Soil to be removed to create a wetland.
- Concord is the subcontractor
- Irrigation is still a loose card.
- Charles spoke with Doug and was told they have a holding tank that we can use.
- 1-2 years after easement has been constructed.
- Agreement already in place with parks.
- June-July hopefully will do earth removal.
- Construction period were looking at three-weeks but, there is no deadline.
- Nelson Springs
- Have not formally discussed
- Unavailability of funds

- Patty will help facilitate, set up a conference call with Peter and include Mark F. Probability of budget for re-allocation in 2006.
- Proposal to go with would be the last one submitted.
- Will also check with Cassidy to see from construction perspective. If he is not with it then we won't get.
- What are the choices we have? Can we survive at Nelson Springs as it is right now? Sooner later it will have to be done and it will cost more.
- Problem with telephone line in the house. AT&T's billing business project. Invoice ended up David Byrnes desk. David called the number and it rang at Jeff Spencer's office.
- Rachel is handling it and phone line will be terminated soon.

BUDGET: David Byrnes

- 2006-2007 renewals standard status and update
- 2006 big issues were Klickitat and Side Channels.
- Bother will be favorable acted on.
- Going to Council this week.
- Product of 07-09 solicitation. Need to monitor review going on.
- All of 07-07 was met on in a timely manner.
- Would encourage all staff to call Tony Grover to find out how this prioritization is taken.
- Each of these reviewing levels doesn't eliminate any of the projects, they all come to some agreement to which are ranked on top.

NEPA: Patty Smith

- FWIP on Coho, this will be assigned and Patty will inform the group by e-mail.
- Carl Keeler NEPA on Lyle. Asking for CX on Castile.
- Klickitat Master Plan re-writes.
- Carol Sue will get all of minutes for past year submitted to Patty Smith.

NEXT MEETING: March 22, 2006 at Nelson Springs

AS PER E-MAIL BY MELVIN. DATE HAS CHANGED.....John Easterbrooks can't make the 22nd. This information will be pasted on.

YKFP

POLICY GROUP MEETING

MINUTES FOR

March 2006 – No Meeting

**(No meeting held due to scheduling
conflicts, plus Melvin went through his
knee surgery)**

MEMORANDUM
April 2006

DATE: April 20, 2006
TO: Melvin R. Sampson
FROM: Carol S. Speedis

SUBJECT: YKFP Policy Group Meeting

The Yakima/Klickitat Policy Group met at Nelson Springs at 9:00 a.m. on April 19, 2006. In attendance were: Mel Sampson, Dave Fast, Scott Nicolai, Jason Rau, Charles Strom, Bill Fiander, Patty Smith, Todd Pearsons, John Easterbrooks, Pat Spurgin, Bill Bosch, Bill Sharp, and Ron Ballard.

AGENDA REVIEW:

- Patty Smith was brought to front of room and given card and her new YKFP bag.
- Todd Newsome and Melinda Davis will be arriving later to meeting.

STAC: Dr. Dave Fast and Dr. Todd Pearsons

Annual S&M Conference:

- Meeting last Thursday with Paul James at Central regarding PAR
- Joel Hubble and Walt Larrick were invited to meeting. Joel attended; Walt did not.
- Scott Nicolai and William Meyer will speak on the Habitat items
- Change meeting title to "Science & Management Meeting"
- Hot Topic Item to be discussed at meeting will focus on Roza Dam vs. juvenile fish passage/survival.
- Joel Hubble of BOR will be working on who the keynote speaker will be for BOR
- Date for PAR again are June 14 & 15, 2006 at Central Washington University
- Key note speakers for everyday
- BPA wants to know if we were charging a registration fee? This would be for the cost of lunch provided. BPA does not want to be responsible for paying.
- The reason the PAR wants to keep lunch on site, is to keep participants at the site and avoiding taking longer lunches and prolonging discussions. Would like to keep to the agenda. Also, tacking on a registration fee may keep people from attending.

Supplementation Workshop:

- Three day workshop held at Columbia River Inter Tribal Fish Commission (CRITFC) hosted by CRITFC and NOAA
- First day Mike Ford and Phil Rogers spoke
- Contacted people head of supplementation (12 representatives)
- 7-8 various issues retrospective
- Second day was discussion on things needed to be done
- Will set up another meeting to deal with these issues.
- Discussion came up in the meeting on how unique the YKFP program is. No other program out there that comes close to what the YKFP program is doing.
- The goals of this workshop?
- In a Joint report there seem to be some issues that were not being addressed.
- This workshop was to answer or get direction to these issues that were not being addressed.
- There is a "Rolling Issue Memo" out there and can be located on the website.
- Summary of discussion was supposed to be out, have not seen yet.
- Will keep PG posted as we go along
- Concerns of these meeting were that time consuming efforts to attend these and not funded?
- All spring field work is in full swing.

OPERATIONS:

Cle Elum Supplementation & Research Facility: Charles Strom

- 2005 Fry transferred to raceways during March 20-24 at the time of transfer they were an estimated 877,238 fry at 1335 fish per pound.
- 2004 brood fish loss at Jack Creek pond #3 during cold freeze of February 17-22. Lost 95% of pond for an estimated loss of 45,736 juveniles. Transferred remaining two raceways to Jack after freeze on March 6, 2006
- *How to Prevent? Cold temperatures in February hold and transfer but, fish won't get fully acclimated. Cheapest and easiest thing to do would be to wait after February and transfer March 1st. Dave Fast will speak with Andy Dittman.*
- *Issue in regards to Domestication Study: High-Low. Discussion was had and three years could be a rough estimate to see which direction you want to go. May want to hold off till 5 year old adults return.*
- *Decision was made to stick to High-Low.*
- Pump blockage at Clark Flat was caused by a rat lodged in pump column. Pump tech removed and will place a screen at a later date. Work took place on March 7th. Intake problem with broken seat from airburst screen #3 at this site. This caused air compressor too continuously to run and would not blow screens.
- Don Larsen and Ray Brunson completed pre-release samples on 04 brood on March 14.
- According to YKFP website 78% of fish have left Easton, 76% of fish have left Jack Creek, and 56% of juveniles have left Clark Flat.
- TSI installed EEPROM units (memory retainer devices at the main facility and all three acclimation sites. This should eliminate program from being erased from computer as has happened numerous times at the Clark Flat site.
- AMB tools installed a new air dry unit at the Jack Creek intake during February this needed replaced because the solenoid was allowing air to pass and preventing the air bladder from maintaining pressure.
- Hatchery host will be arriving April 25th, 2006. First Hosts are from California, Second hosts from Washington State and Third hosts from Florida (need to get a waiver for hosts)

Habitat: Scott Nicolai

- Working on purchasing Browitt and Runacres property. Should get the appraisal by mid-May.
- The Browitt property is an inholding with the BPA protected lands upstream of the hatchery. The Runacres property is down stream ½ mile from Easton acclimation property
- Holmes Property tour with the help from Melinda Davis and Todd Newsome. Had eight class rooms visits including 2nd, 3rd and 5th graders. We had learning stations set up. Kids learned about Coho, aquatic insects and Kelly L. did tree planting. Hope to do this next year.
- Had a great turn out on April 8th for the volunteer stream planting-1200 trees were planted. Salmon BBQ was great.
- Have been appointed to sit on the Critical Areas Committee in Ellensburg which has four streams that run through the city
- BOR meeting next week on Cle Elum Reservoir on flow regulations.

Prosser/Marion Drain: Bill Fiander

- In Basin Coho, Prosser to acclimation sites
- March 1st moved, transported 60,000 split four ways. These are true in-basin fish.
- Mitchell Act – Eagle Creek Hatchery fish, WDFW done the hauling on March 7th.
- 123 fish on station
- 17 steelhead worked up and released
- April is when peak of collection happens
- River is running dirty right now; aquatic plants are plugging up Chandler. Had to bypass
- Crew will check to see if we have enough fish for when the vets comes from CRITFC when were inserting radio tags.
- New temps hired for Acclimation sites, everything going good and we are nearing the end of acclimation.

Coho: Todd Newsome

- Dropped boards at Boone Pond acclimation site dam
- No significant Merganser problem at Boone Pond this year, maybe 15-20 birds were scared off.
- Holmes Site: 2,000 ft 8 inch pipe from at fish screens structure across alfalfa field down to lower pond Placed pipe through screens, detectors on pipe and been having 200 hits a day.
- State took the fish screens drum/paddlewheel out at Holmes, but left the screen structure so that Todd can install 8" pipe with better PIT detectors and improve control of water level in acclimation pond.
- Stile's Pond coho have not left yet.
- No fish moving down stream.
- LaSalle coho hatchery not going as we hoped and planned. Phelps Freeborn (DOE – Water Quality) is holding up?

Fall Chinook: Melinda Davis

- 100% marked
- Scheduled release, Monday March 24th with second release on March 28th.
- Keeping an eye on Stiles. These are above Todd's coho. Will release coho then the fall Chinook.
- These are accelerated.
- Beach seining found 120 fish. Will only be in Thursday & Friday of this week.

Klickitat: Bill Sharp

- May 12th will be open house at the Klickitat Hatchery. This is a huge deal.
- Went to tour the Hatchery on April 18th to see how to set up for event.
- BPA closeouts working on and gearing up for next season.
- Contract with Don Warren for finishing up Master plan will get with Patty Smith and Carl Keller.
- Wahkiakus 50-60% completion. Stands idle at this time due to lack of additional funding.
- Wrapping up Recovery Plan, will submit at end of April
- KWIP project is moving along.
- Will Conley's project is doing some tree planting right now.
- Will have some culvert work coming up on the rez.
- Ralph Kiona will be coming down in June 2006 to help Will Conley with some of this projects. Ralph is usually stations up north at Leavenworth.
- Hatchery Activities: Ron Ballard and Jason Rau
- May 8th plant 141,000 accelerated directly into the river.
- 50,000 excess out of production will thin out in July. Moderate to lows
- All fish ad-clipped
- May 2nd bring in tagging trailer.
- Mass mark when up to size.
- Jason Rau and Chris Frederickson attended Steelhead Workshop on March 7-9, 2006
- Representatives from all over.
- Discussed ESA listings, genetics, populations, Resident v Andromous.
- Doug Hatch spoke on Steelhead Reconditioning.
- Carmen Sharp spoke on Growth modulation
- Jason will contact CRITFC; Hood River has a paper out on Steelhead Project.
- New fish tank came in, will be using real soon.

Data: Bill Bosch

- Monitoring Spring Chinook
- Could be sea lion activity or just water temp
- Fishery closed last week (state)
- One Spring Chinook has showed up at Prosser so far

- STAC related issue ISAP/ISRP a lot of information on pit tagged fish to compare to project on what's going on with natural stock.
- Annual reports due on the 31st.
- Manuscript writing, waiting for the five year olds
- Could be a month to six weeks.
- Steelhead kelt report

Construction/Maintenance/Mitigation: No report given

Budgets/Contracts/Proposals & NEPA: Patty Smith

- Statement of Work and budgets are in
- Pieces Process has been a cumbersome process. Appreciates everyone efforts
- Contracts will be in place by May 1st 2006.
- All are in different steps, but...they are all getting there.
- ESA regional BiOp for Steelhead?
- BiOps are not species orientated. These are in Remand right now and David Lind is working on.
- Yakima Basin Recovery Plan has been submitted this is for Steelhead and Bull Trout
- Meeting with BOG, anyone having to do with this process need to attend the BOG. Call or respond to questions. This determines the interest level.
- Update on trailer ports. Will make phone call to Peter Lofty this afternoon to see where were at.
- Maintenance cost, Charles got estimates. Need to go through the three bid process.
- Would like to discuss the power rate at Roza and for Cle Elum Hatchery. Puget Sound Energy for Cle Elum. See if there is a preferred rate. Any sort of negotiations we can do?
- Will tour Klickitat with Carl Keller

NEXT MEETING: May 24th at Nelson Springs

Meeting Adjourned:

Draft AGENDA

YKFP Policy Group Meeting
Revisions and updates to be made at meeting – Dave

Nelson Springs, USofA, April 19, 2006: 9:00 A.M.

1. Call Meeting to Order, Mel
 - o Agenda Review, Additions, Modifications
2. STAC, Dave F., Todd P.
 - Annual S&M Conference Plans
 - Supplementation Workshop
3. Operations
 - Cle Elum, Charlie
 - Prosser/Marion Drain, Bill F.
 - Coho, Todd N.
 - Fall Chinook, Melinda D.
 - Klickitat, Bill S.

- Data, Bill B.
- Habitat, Scott N.

- 4. Construction, Maintenance, Mitigation
 - TBA

- 5. Budgets, Contracts, Proposals, BPA
 - 06, 07 renewals
 - 07-09 proposal submittals
 - Other

- 6. NEPA, Patty
 - List Agenda items

- 7. Other

- 8. Next Meeting Date/Place: _____