

Collaborative Prescribed Fire on the Mt. Adams Landscape

Sarah Allaben | Mt. Adams Resource Stewards
sarah@mtadamsstewards.org



Mt. Adams Resource Stewards

Why prescribed fire?

Forest health & resiliency



Wildlife habitat



Cultural resources

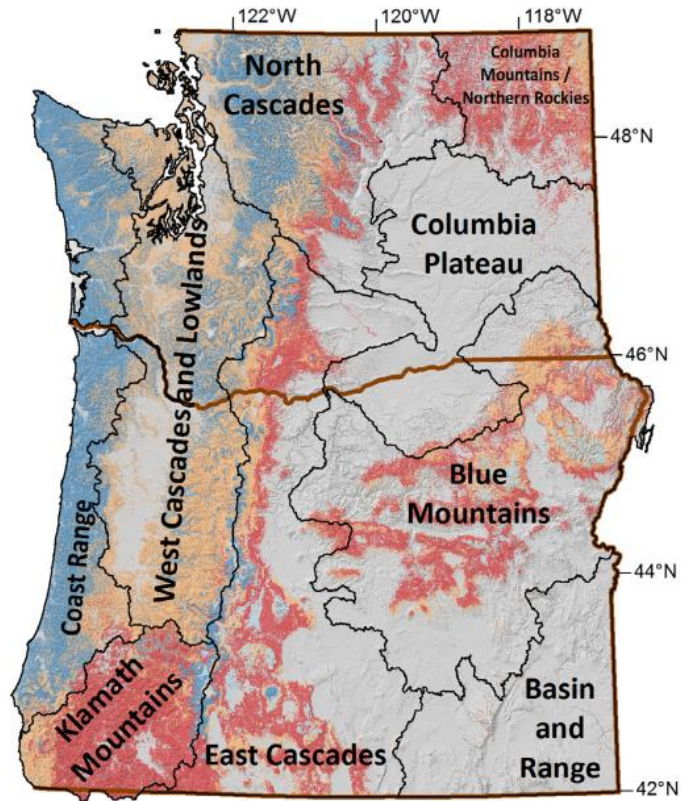


Hazardous fuels reduction

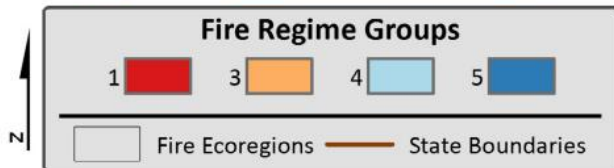


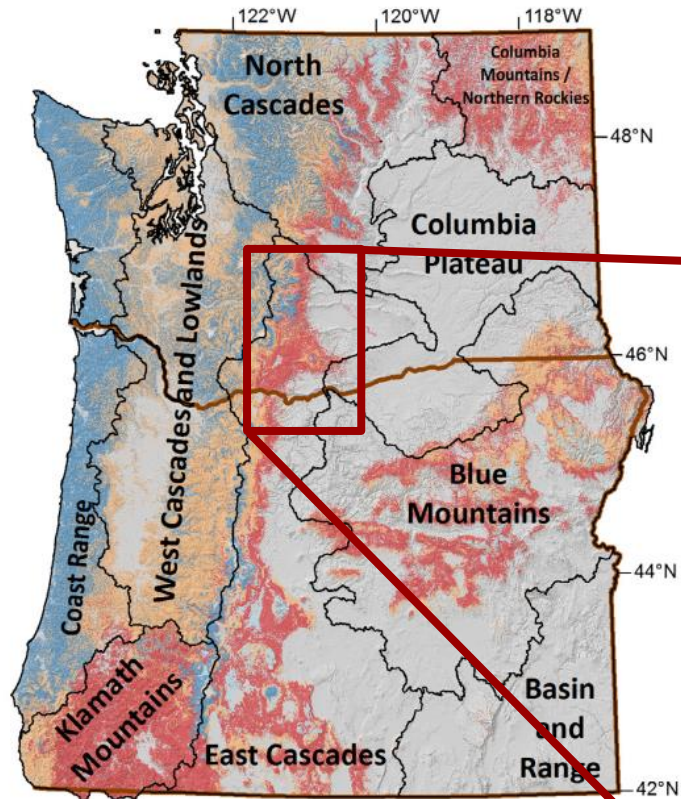
Home & community protection from wildfire



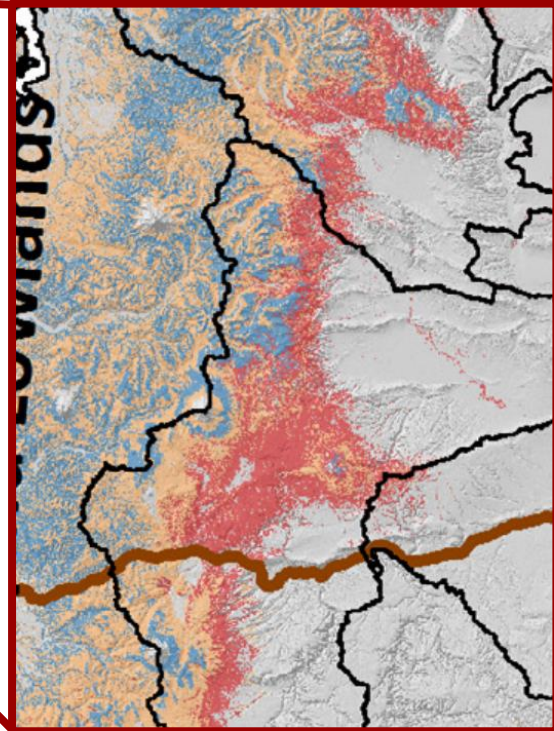
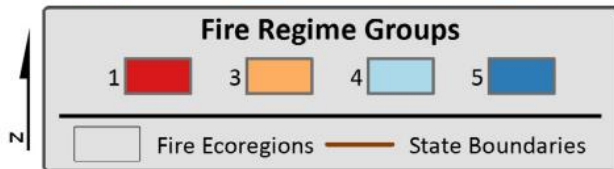


Red: Historical Fire Regime Group I
(low- to moderate-severity fires
every 0-35 yrs)

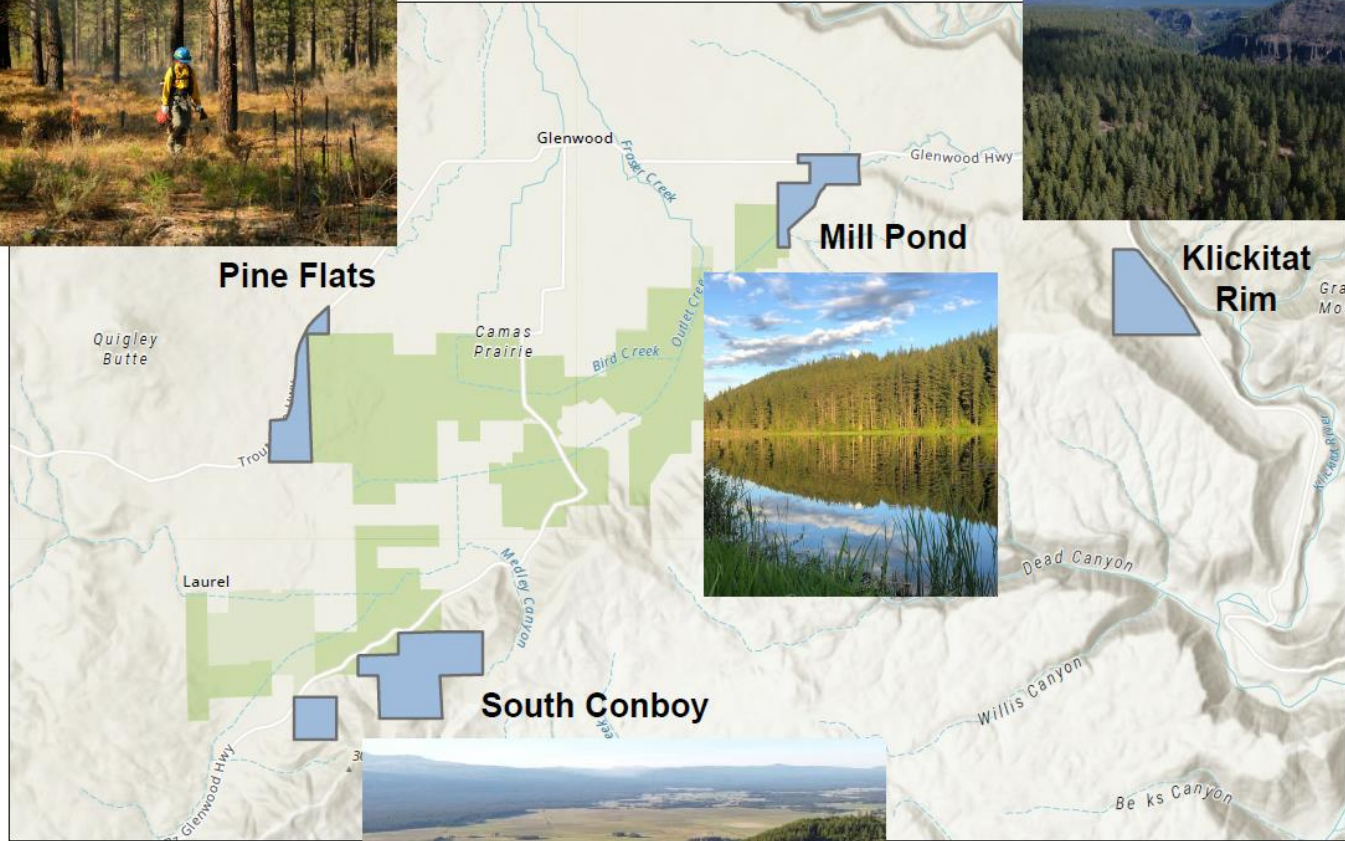




Red: Historical Fire Regime Group I
(low- to moderate-severity fires
every 0-35 yrs)



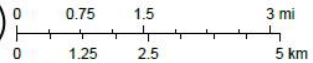
Mt. Adams Community Forest



3/22/2024



Mt. Adams Resource Stewards

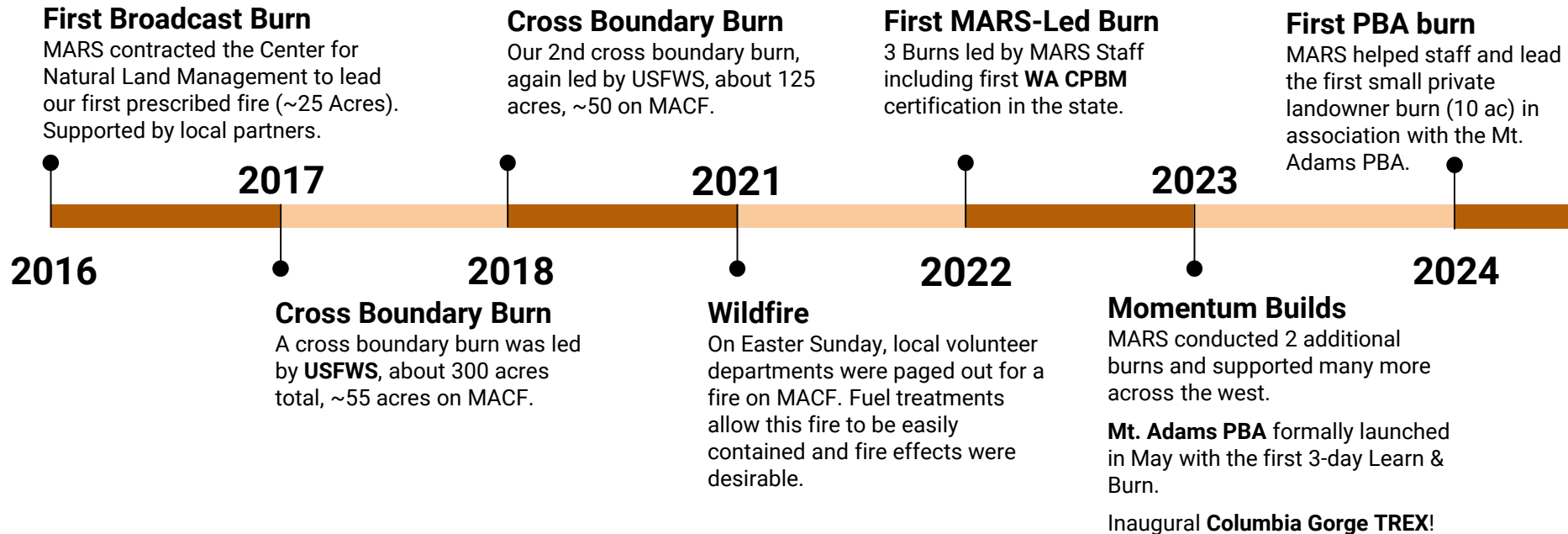


WSU Facilities Services GIS, Oregon State Parks, State of Oregon GEO, WA State Parks GIS, Esri, TomTom, Garmin, SafeGraph, GeoTechnologies, Inc.

Mt. Adams Community Forest burns



A timeline of Rx Fire at MARS



Washington prescribed fire needs

- Clear and supportive regulations/policy
- More training opportunities
- Collaborative, cross-boundary planning and implementation
- Robust workforce
- Expanded public outreach and education

Washington prescribed fire needs

- Clear and supportive regulations/policy
- **More training opportunities**
- **Collaborative, cross-boundary planning and implementation**
- **Robust workforce**
- Expanded public outreach and education



2023 WADNR Prescribed Fire
Barriers Assessment Report &
Strategic Action Plan



The Nature Conservancy 



Mt. Adams Resource Stewards



October 9-20, 2023
Glenwood, WA



CGTREX participants

International

7.1%

Private

11.9%

Non-Profit

35.7%

Tribal

4.8%

Federal

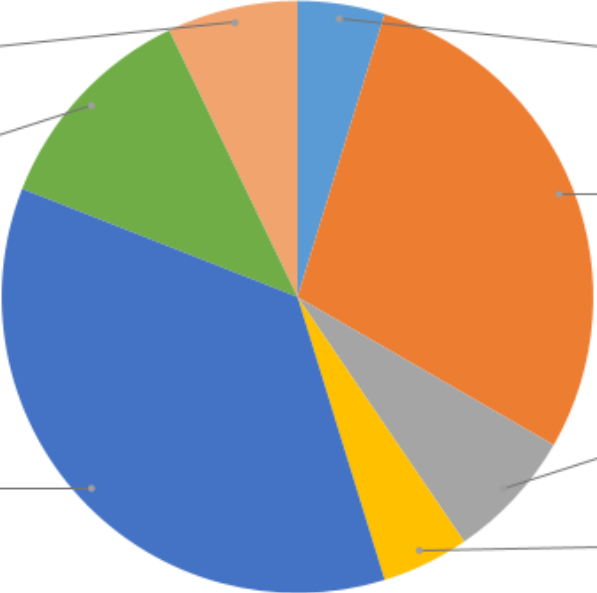
28.6%

State

7.1%

Local

4.8%





21 NWCWG training assignments
10 non-NWCWG participants

173 acres burned on
federal *and* private lands

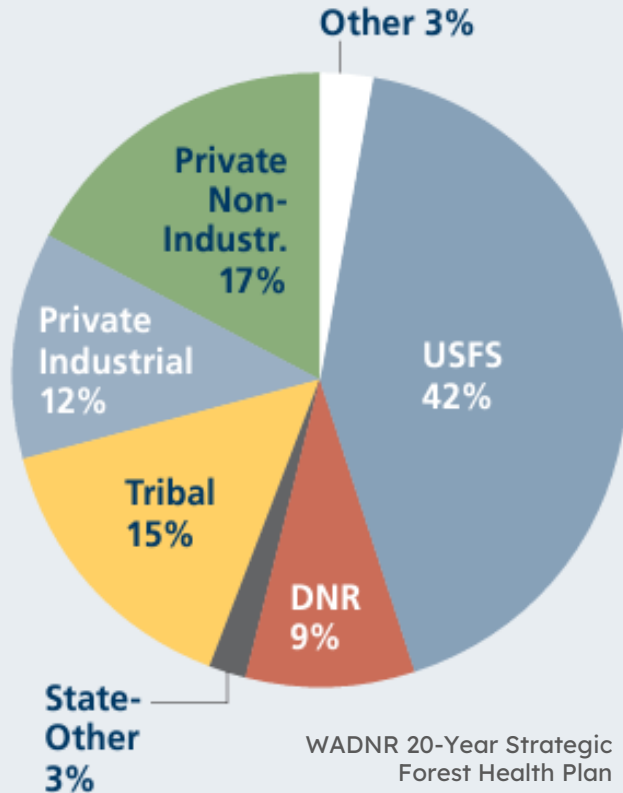


Mt. Adams Resource Stewards



EASTERN WASHINGTON ACTIVE RESTORATION NEED BY OWNERSHIP

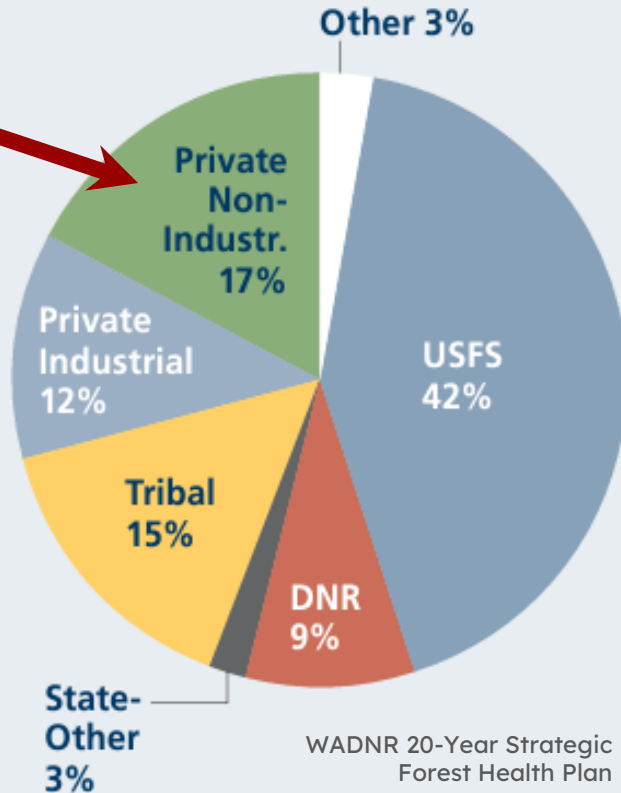
HAUGO ET AL. 2015



**An all-lands
approach is needed.**

EASTERN WASHINGTON ACTIVE RESTORATION NEED BY OWNERSHIP

HAUGO ET AL. 2015



An all-lands approach is needed.

How can we support small private landowners and non-agency land managers?

Washington prescribed fire needs

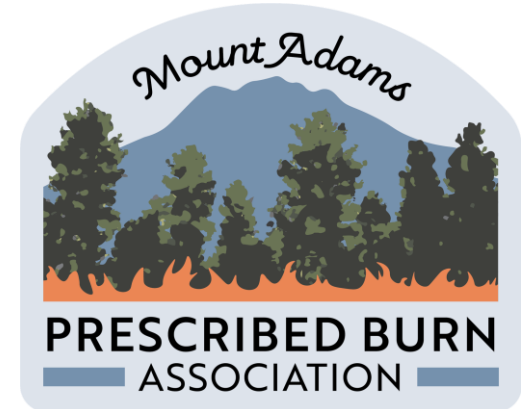
- Clear and supportive regulations/policy
- More training opportunities
- Collaborative, cross-boundary planning and implementation
- Robust workforce
- Expanded public outreach and education

WA *private lands* prescribed fire needs

- Clear and supportive regulations/policy (**e.g., liability protection**)
- More training opportunities (**including non-NWCG pathways**)
- Collaborative, cross-boundary planning and implementation
- Robust workforce
- Expanded public outreach and education
- **Equipment**
- **Technical assistance**
- **Funding support**

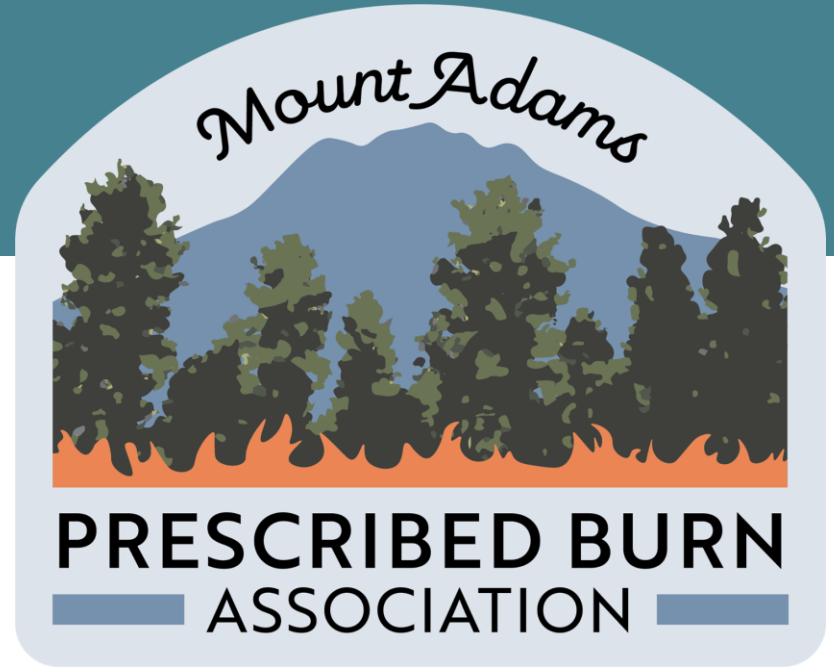
WA *private lands* prescribed fire needs

- Clear and supportive regulations/policy (**e.g., liability protection**)
- More training opportunities (**including non-NWCG pathways**)
- Collaborative, cross-boundary planning and implementation
- Robust workforce
- Expanded public outreach and education
- **Equipment**
- **Technical assistance**
- **Funding support**



Mt. Adams PBA

- **Coalition** of land managers and community members
- **Mutual support** for private lands prescribed burning
- **Training** & workshops
- **Equipment** cache
- **Advocacy** in eastern WA counties and at the state level





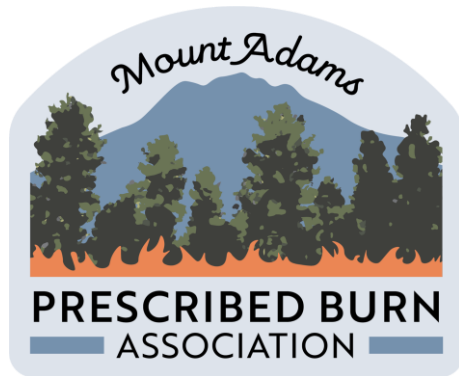
2023 Learn & Burn

A one-stop shop for..

PLANNING

FIRE

REVIEW



Consultation
Burn plan
templates & review
Assistance with
permitting
Unit prep resources

Equipment
cache
Recruiting
volunteers &
experienced
personnel
Monitoring
support

After-action
reviews
Planning
additional
entries

Get in touch

- **Email lists** for Washington Prescribed Fire Council and MAPBA for future TRES and PBA updates in Washington
- Learn more about MARS at mtadamsstewards.org





Questions?

Sarah Allaben

sarah@mtadamsstewards.org, 440-497-8224



Mt. Adams Resource Stewards