

Yakima Basin (Aquatic) Science & Management Conference 2023

Wednesday June 14, 2023 &
Thursday June 15, 2023



photo courtesy of Zack Mays

- Information
- Communication
- Coordination

For more information visit Yakama Nation Fisheries website (yakamafish.nsn.gov)
email: anthony.fritts@dfw.wa.gov
email: chris_frederiksen@yakama.com

Purpose: To provide a comprehensive overview and exchange of ideas about the most current biological science and resource management activities in the Yakima Basin.



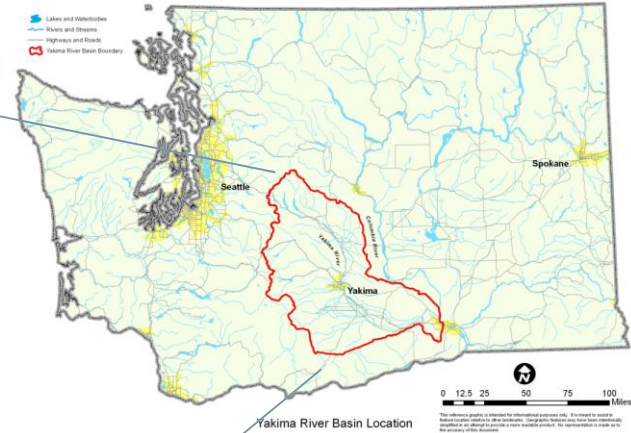
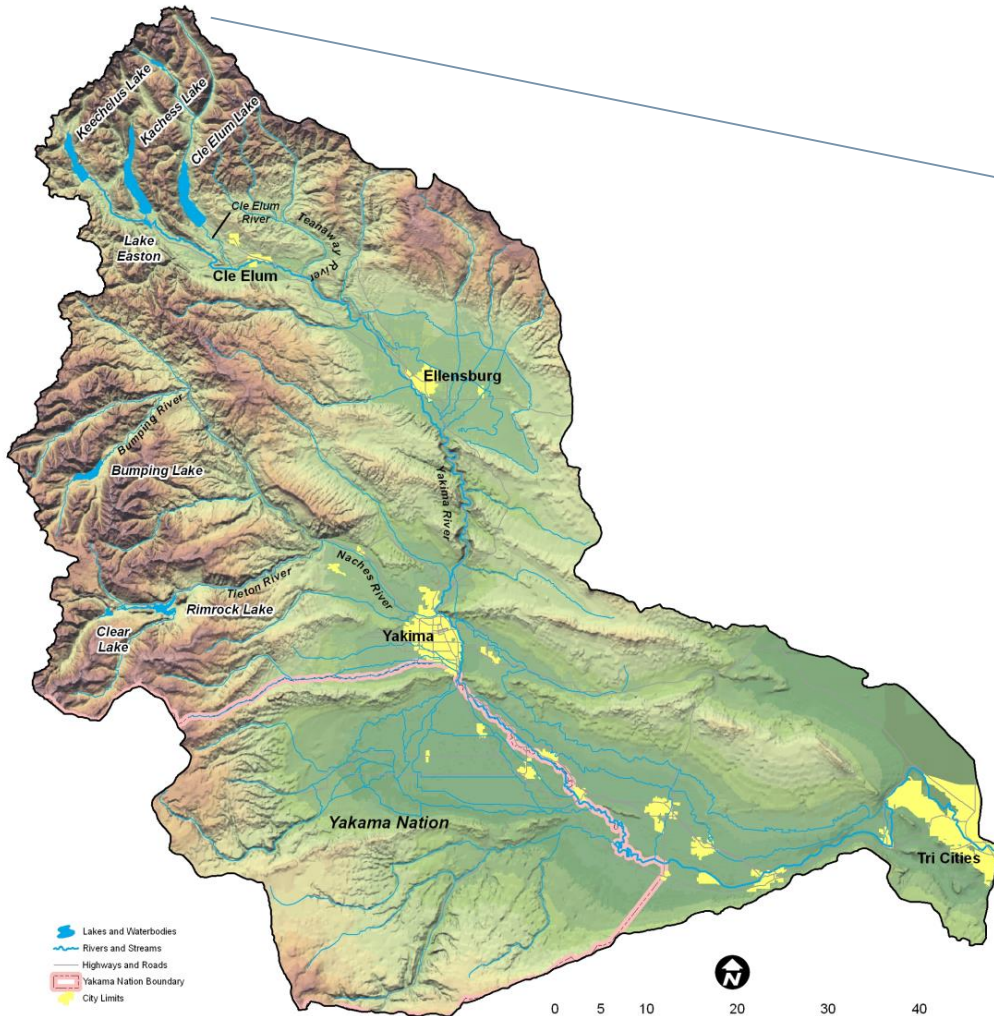
photo courtesy of Scott Nicolai

Central Washington University
400 E University Way
Ellensburg, WA 98926

Discovery Hall Room 103



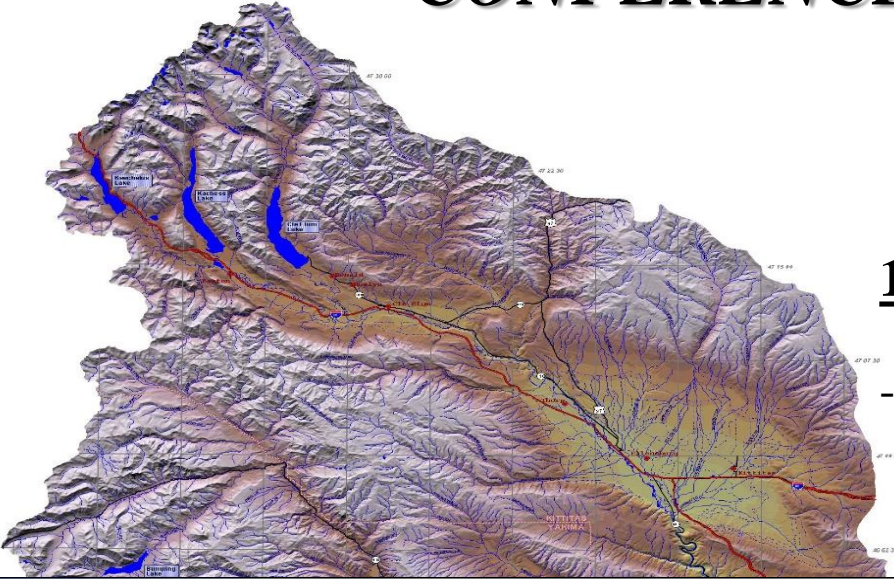
YAKIMA BASIN



- Historic Salmon/Steelhead Runs:
 - 600K-1M
- Second Only to Snake River Basin

This reference graphic is intended for informational purposes only. It is meant to assist in feature location relative to other landmarks. Geographic features may have been intentionally simplified in an attempt to provide a more readable product. No representation is made as to the accuracy of this document.

CONFERENCE OVERVIEW: DAY 1



1) Yakima Reservation Watershed Project

- **Satus & Toppenish Cr Watersheds**
 - **Habitat/Floodplain Restoration**
 - **Steelhead M&E Activities**



CONFERENCE OVERVIEW: DAY 1

2) Upper Basin Activities

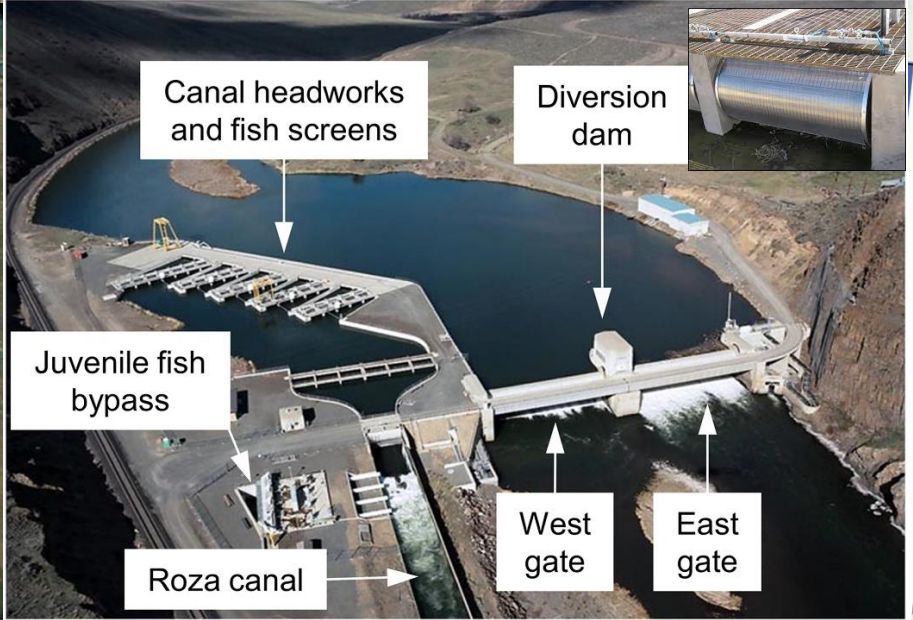
- Kittitas Reach Floodplain/Forest Regeneration
- Teanaway River
 - Spring Chinook Utilization
 - Groundwater Monitoring
 - Restoration Plans and Strategies
- Restoration Projects
 - Taneum Cr. and Little Naches R.



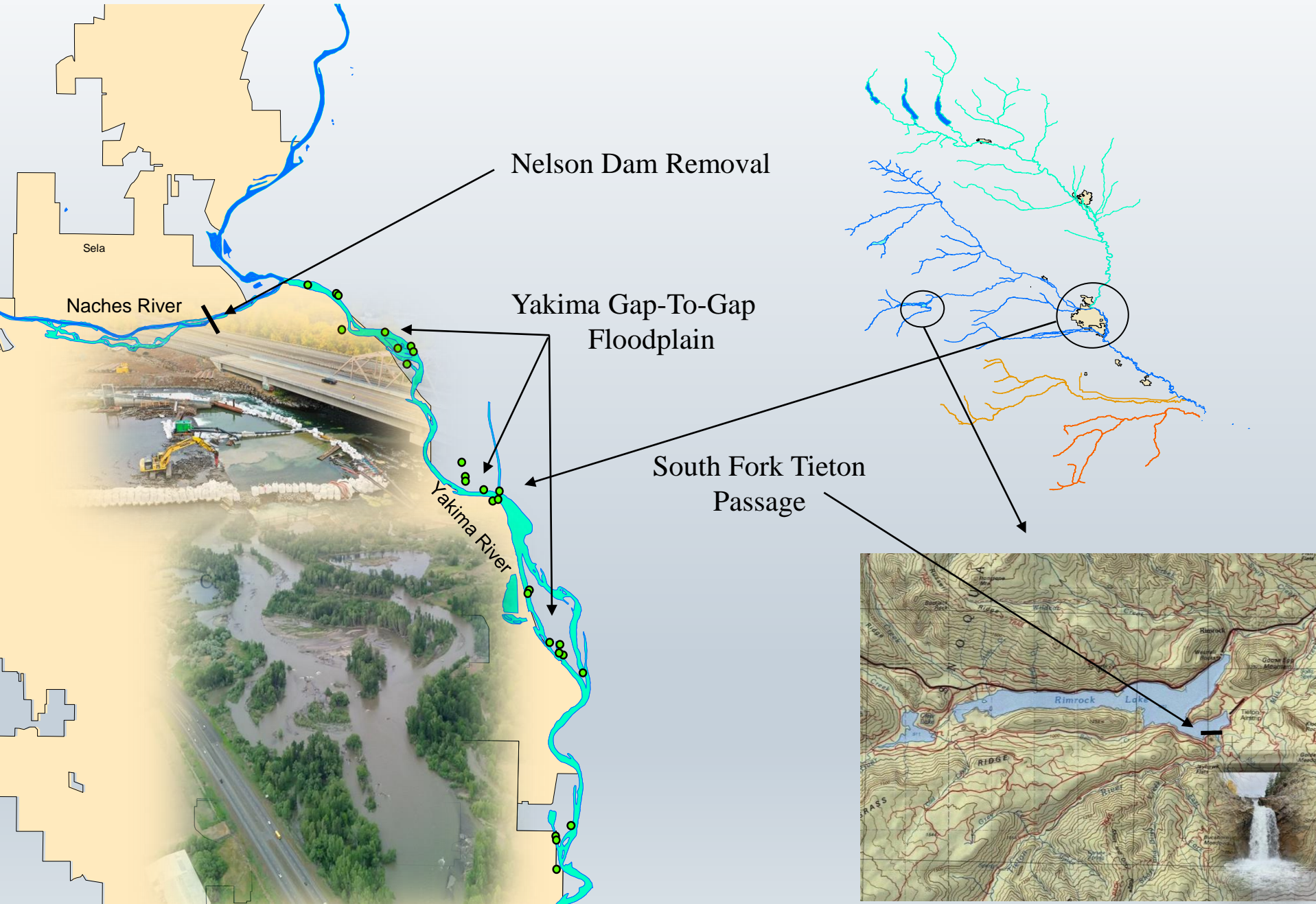
CONFERENCE OVERVIEW: DAY 2

**2009 YAKIMA
STEELHEAD RECOVERY PLAN**
Extracted from the
2005 Yakima Subbasin Salmon Recovery Plan
With Updates
Final
August 2009

**Yakima River Basin
Integrated Water Resource
Management Plan**
Final Programmatic Environmental Impact Statement
BENTON, KITTITAS, KLICKITAT AND YAKIMA COUNTIES



FISH PASSAGE AND FLOODPLAIN ACTIVITIES



ANADROMOUS FISH REINTRODUCTION

Coho

- Tributary Supplementation
- Rearing Strategies and Survival

Spring Chinook

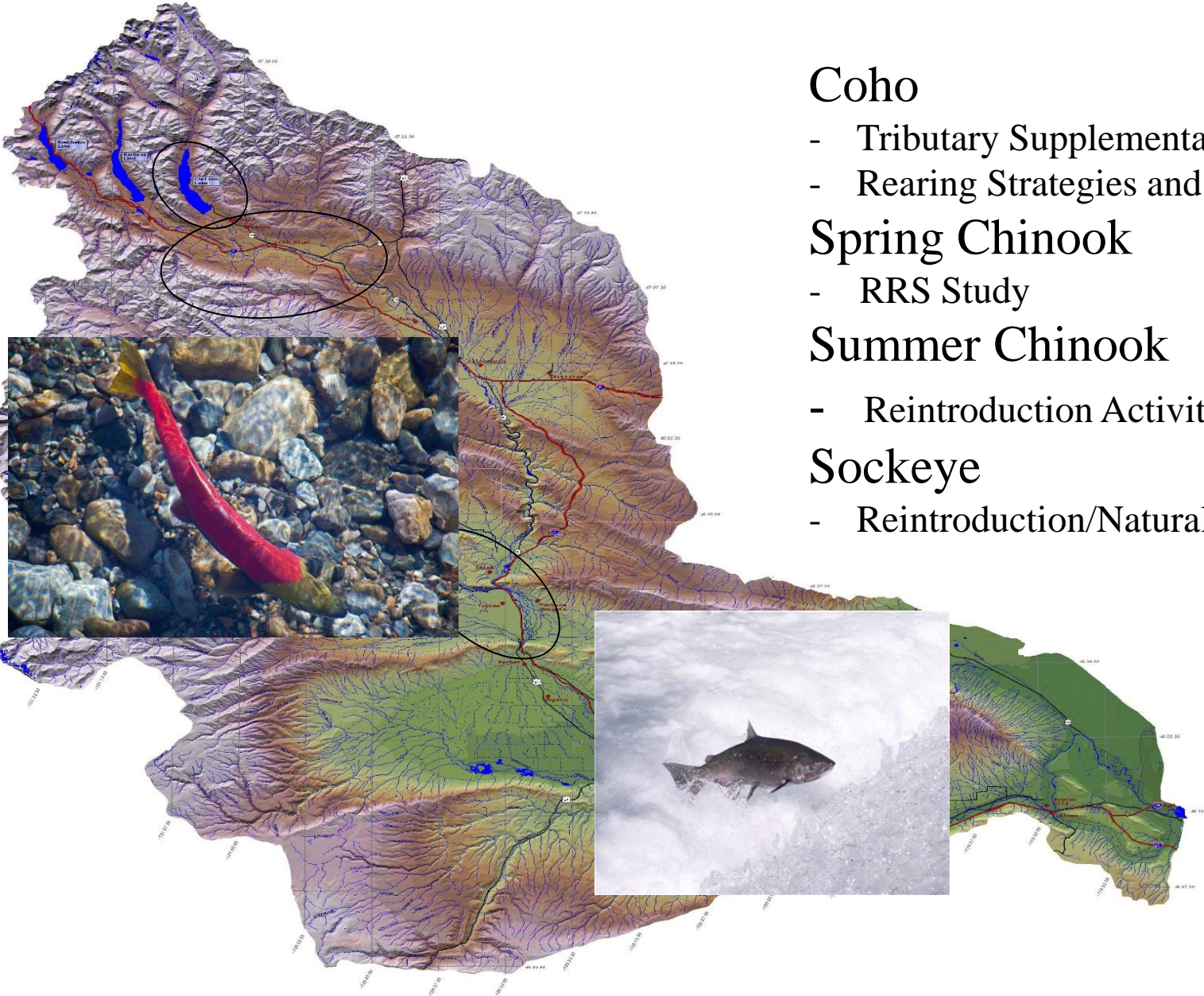
- RRS Study

Summer Chinook

- Reintroduction Activities

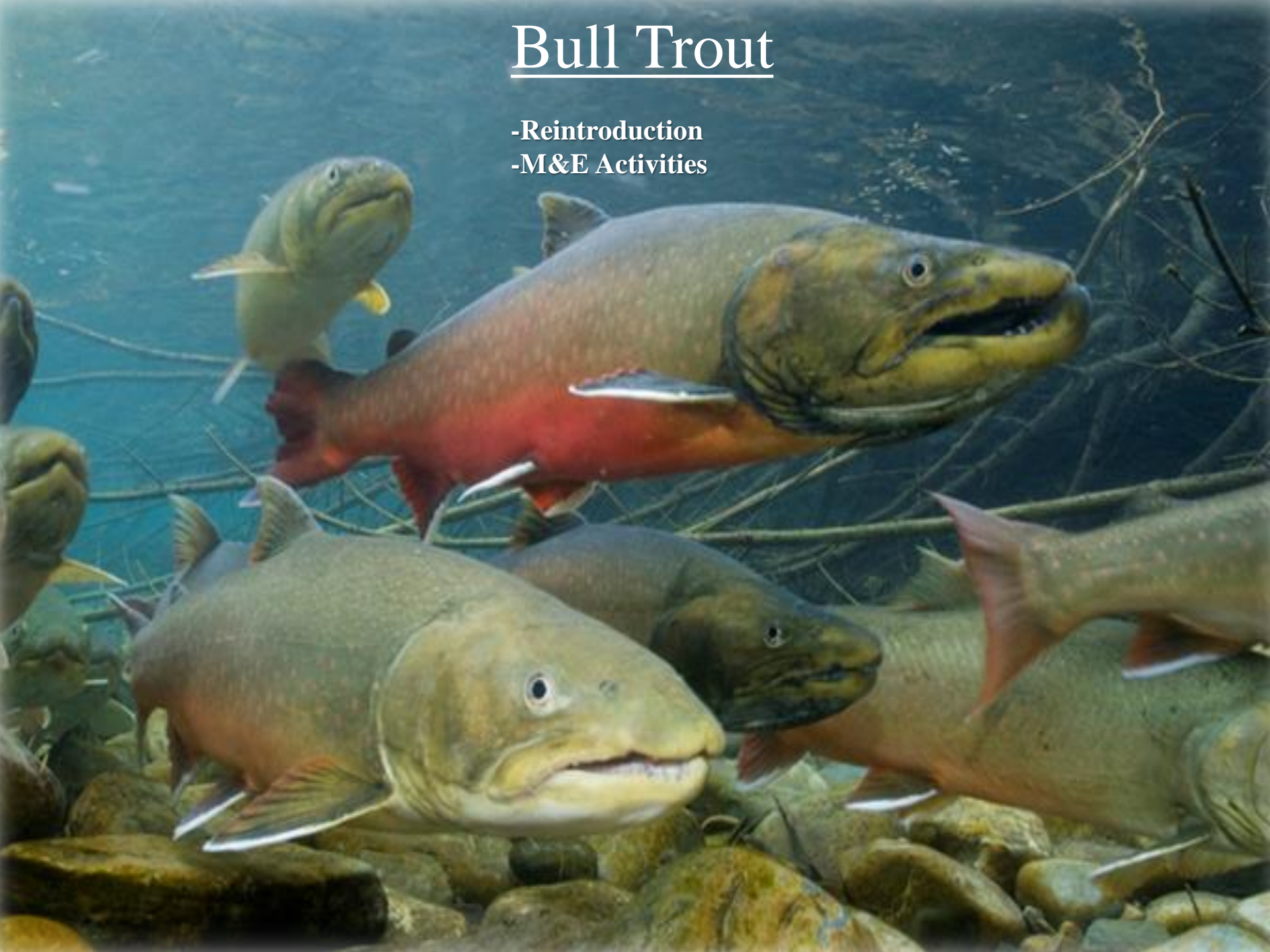
Sockeye

- Reintroduction/Naturalization

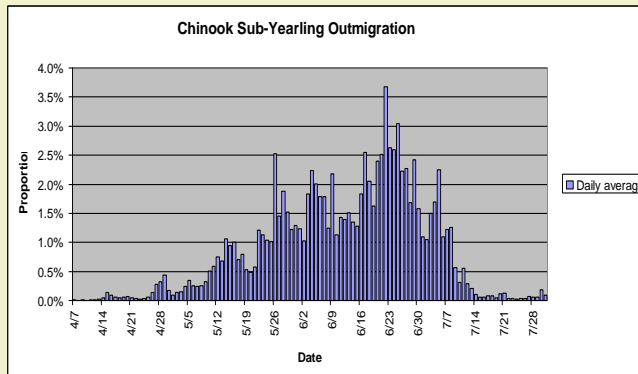
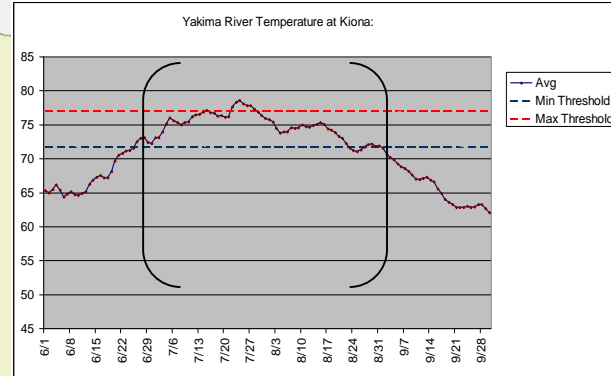


Bull Trout

- Reintroduction
- M&E Activities

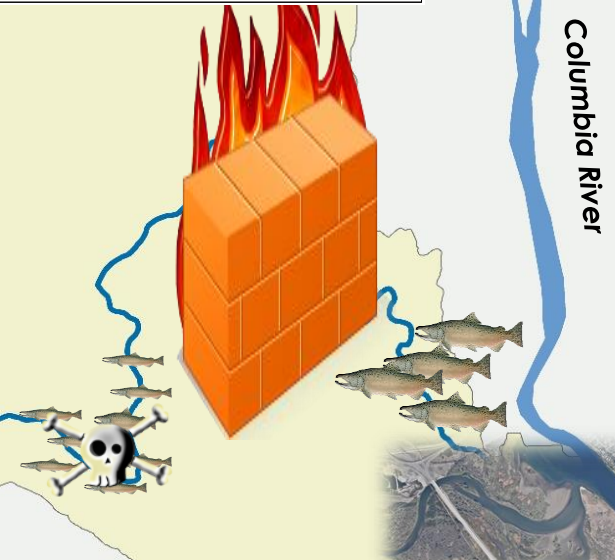


Lower Yakima River



Yakima River: Anadromous Species
- Smolt Outmigration Survival

Yakima River: Lower River Thermal Barrier
- Adult Salmon & Steelhead
Upstream Migrants



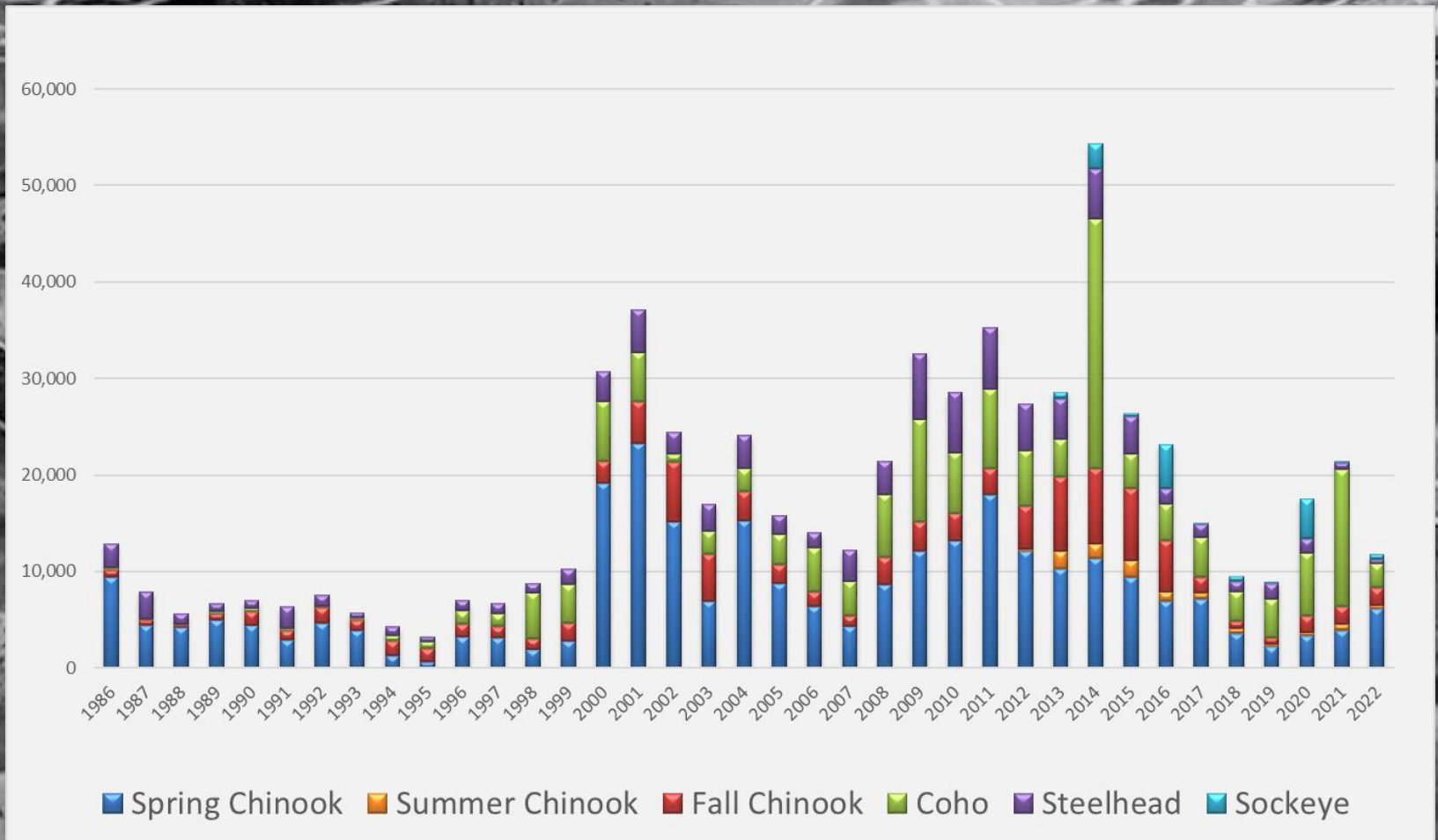
Columbia River

Yakima River

Cutthroat Trout



Yakima River Salmon & Steelhead Trends





“Focus On What We Control”

Yakima Basin Activities

Continue to Improve Freshwater Productivity

Let's Get Started!