



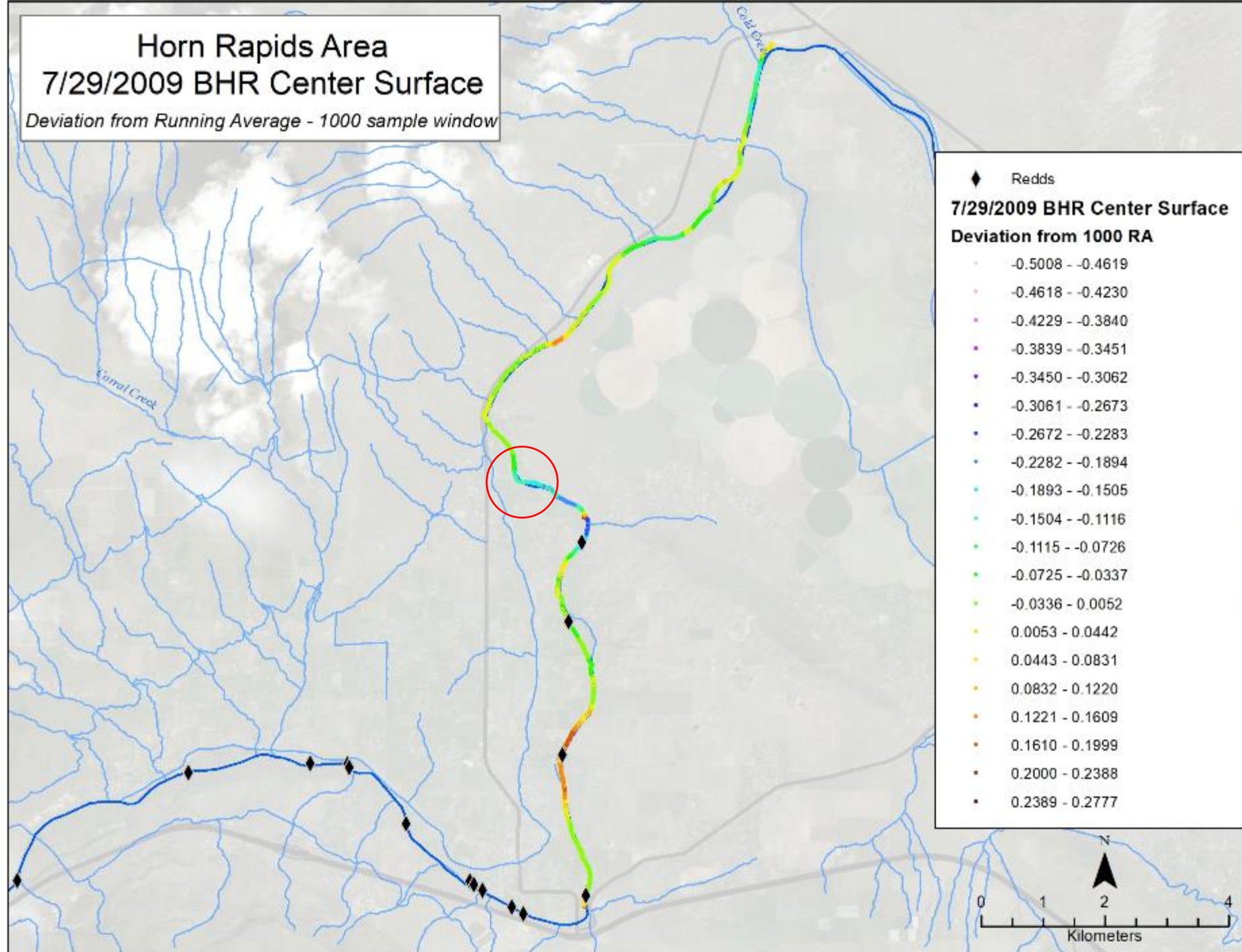
Enhancing Thermal Refuge at Yakima RM 25

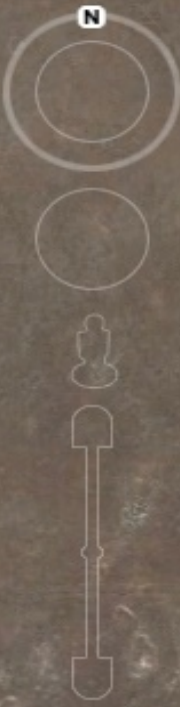
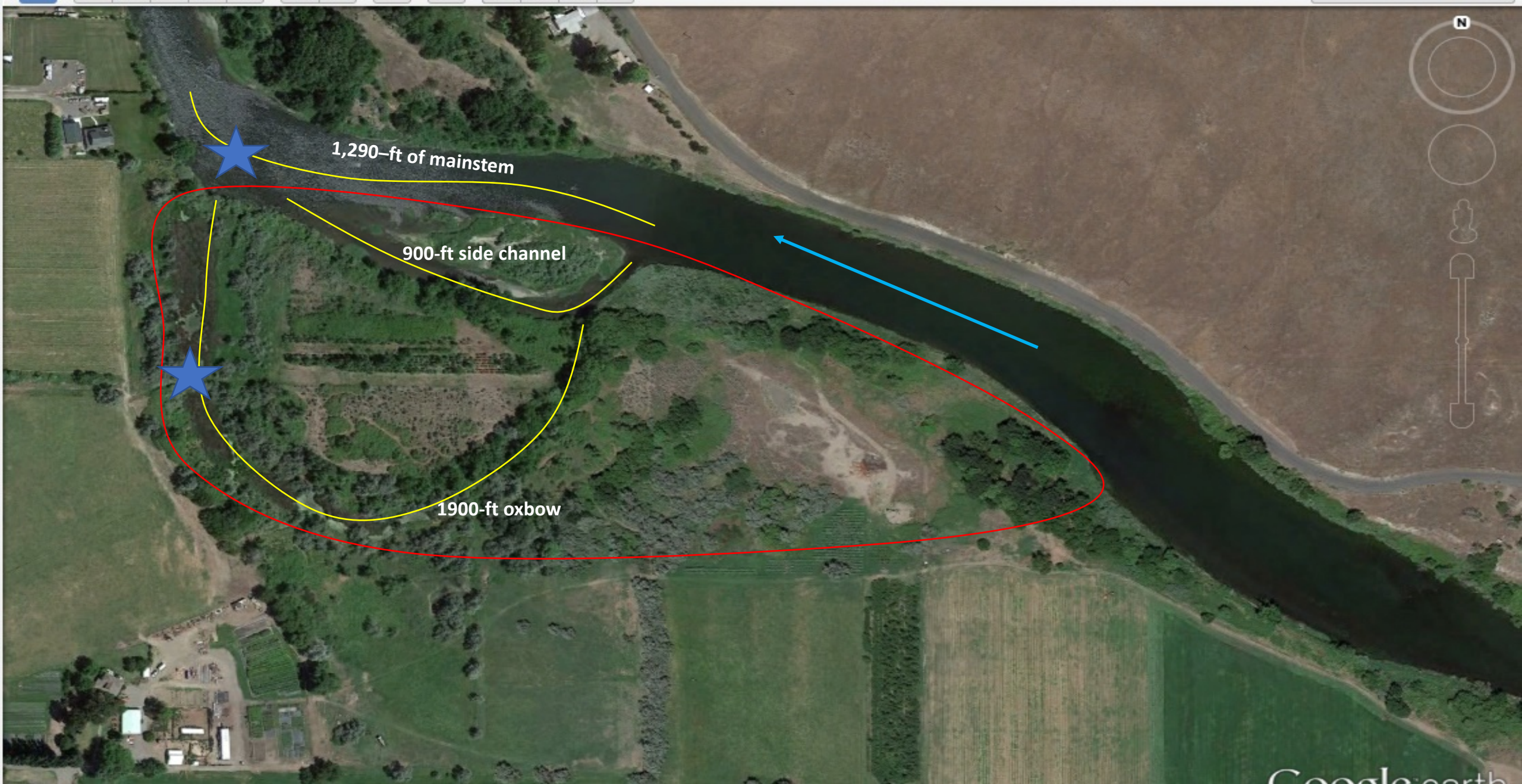
Mid-Columbia Fisheries Enhancement Group & Benton Conservation District

Presented by Rebecca Wassell at the Lower Yakima Water Quality and Habitat Coordination Meeting, 3/4/2020

Horn Rapids Area 7/29/2009 BHR Center Surface

Deviation from Running Average - 1000 sample window

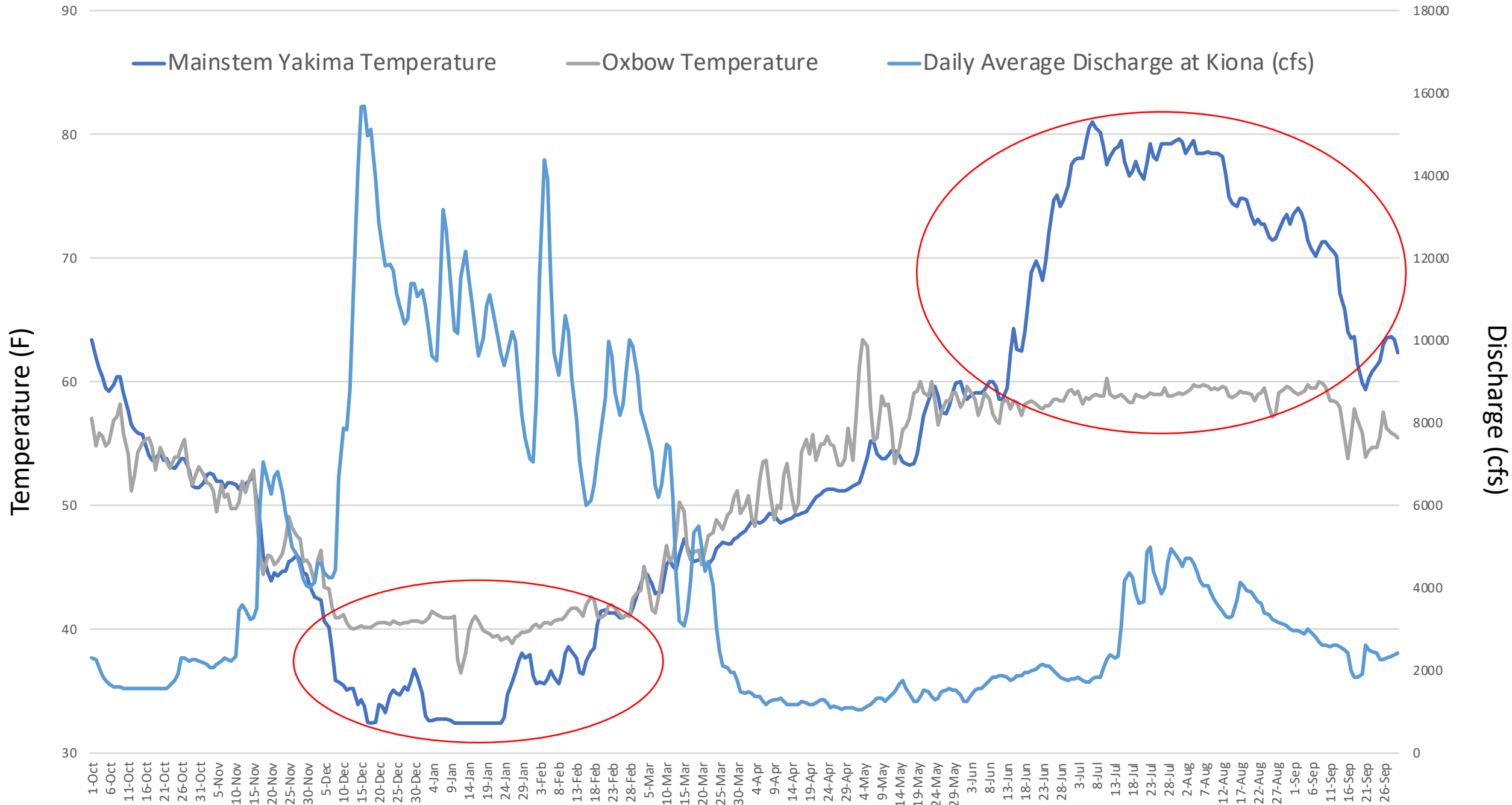




1,290-ft of mainstem

900-ft side channel

1900-ft oxbow





Existing outlet



Constructed alcove outlet
(immediately after construction)



Groundwater channel

Yakima River

Alcove

Yakima RM 25, Sept. 10, 2019





July, 2019



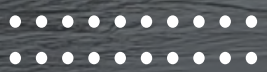
September, 2019



February, 2020



Proposed monitoring, 2020



Thank you to our partners and funders:

- Landowner, Bill Mast
 - Washington Conservation Commission
 - McNary Mitigation Fund
 - WA Department of Ecology
 - Yakima Tributary and Habitat Program
 - Anchor QEA
 - Wildlands, Inc.
 - Yakama Nation Fisheries (assistance with fish monitoring)
- 