

Teaway Community Forest



7/2012

Teanaway Community Forest

50,241 acres or
78.5 Sq. miles

- 2015 Management Plan
- 2016 Aquatic Restoration Strategy
- 2018 Recreation Plan
- 2020 Forest Habitat Management (next)

Farm Service Agency

Google

Imagery Date: 9/25/2011 47°17'04.55" N 120°51'12.22" W elev 2603 ft eye alt

Teanaway Accomplishments

June 2019 update:

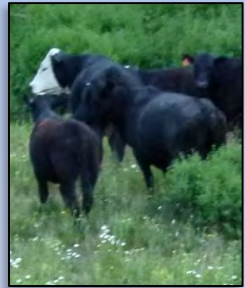
Goal 1: Water

- Treated 132 acres of floodplain with large wood
- Monitoring groundwater response
- Reduced 165 tons/year of fine sediment entrainment



Goal 2: Working Lands

- Constructed ~7+ miles of livestock fencing
- 152 acres shaded fuel break
- 280 acres pre-commercial thinning



Goal 3: Recreation

- Recreation Planning complete Fall 2018
- DNR Funding for Campground improvements

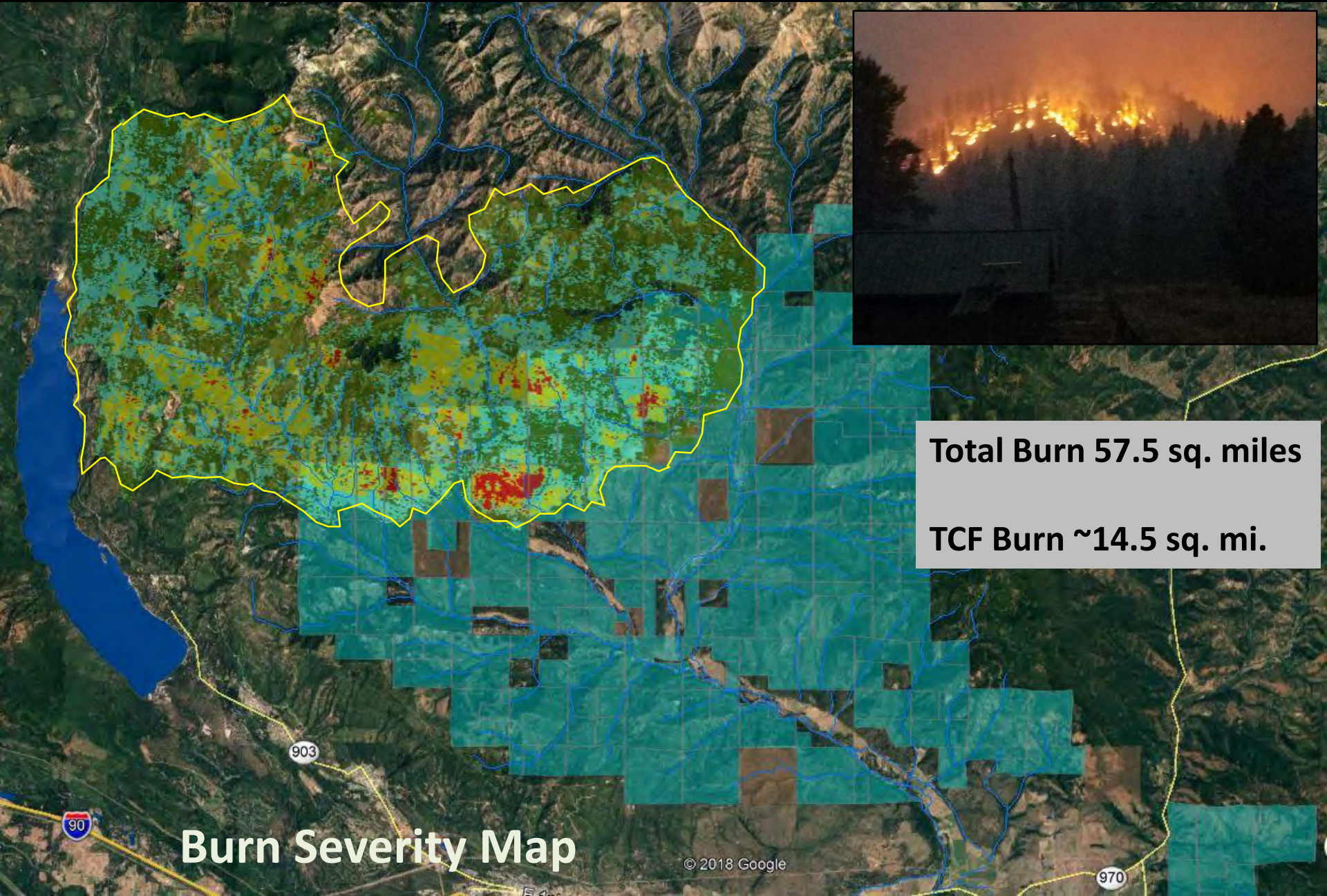


Goal 4: Fish & Wildlife

- Removed 10 fish passage barriers, opening ~7+ miles habitat
- Restored ~7.5 stream miles in 7 Tributary streams
- NFT Geomorphic Assessment + Hydraulic Modeling



Jolly Mountain Fire 2017



Total Burn 57.5 sq. miles
TCF Burn ~14.5 sq. mi.

Burn Severity Map



2018



2019

DNR constructed “shaded fuel break”



A dirt road with visible tire tracks curves through a dense forest of tall, thin pine trees. The ground is covered with dry grass and some fallen branches. The sky is overcast.

2015-2017 \$328K

280 acres of Pre Commercial Thin
152 acres of Shaded Fuel Break

2017-2019 \$125K

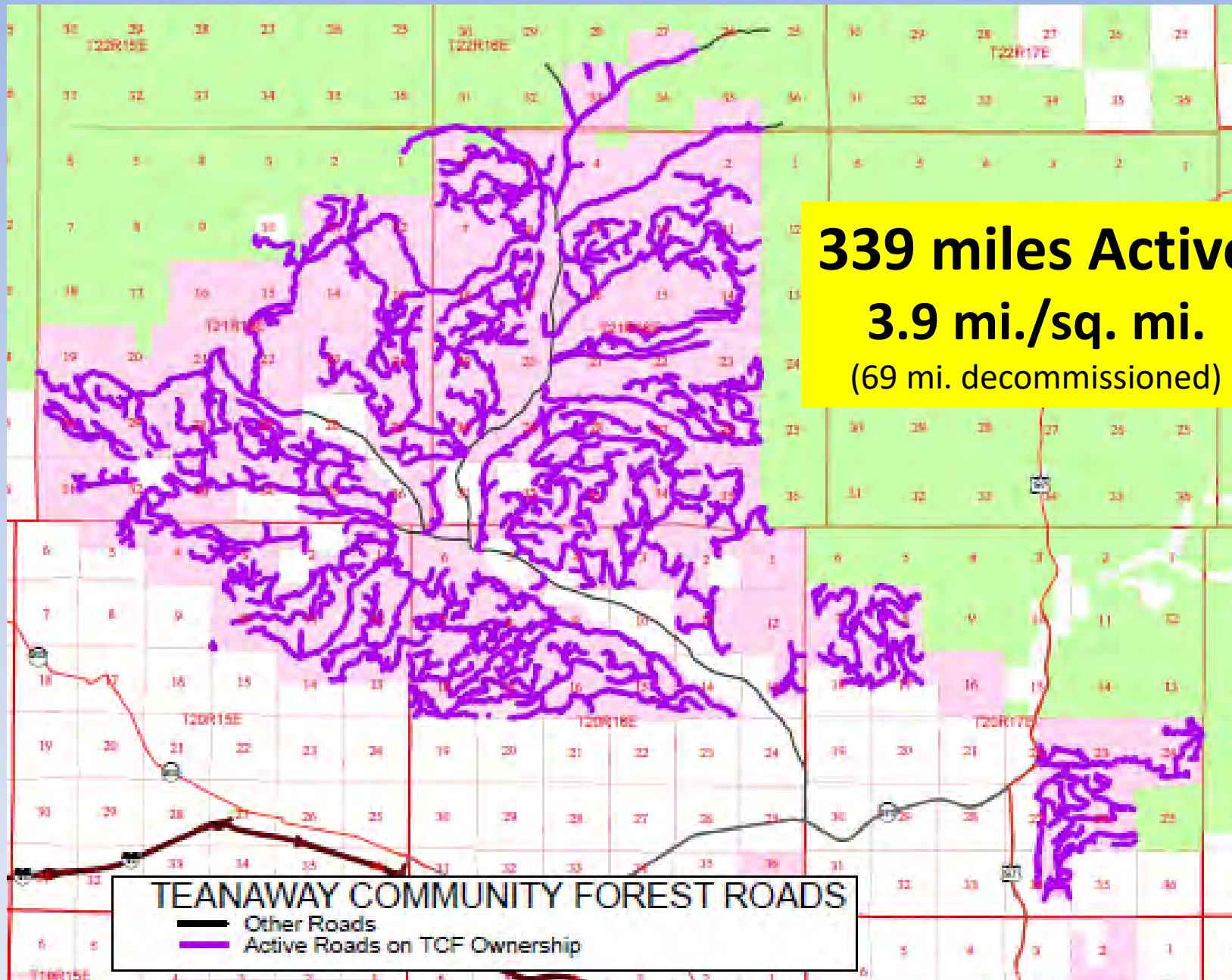
40 acres of Shaded Fuel Break

TCF ROADS CURRENTLY ACTIVE

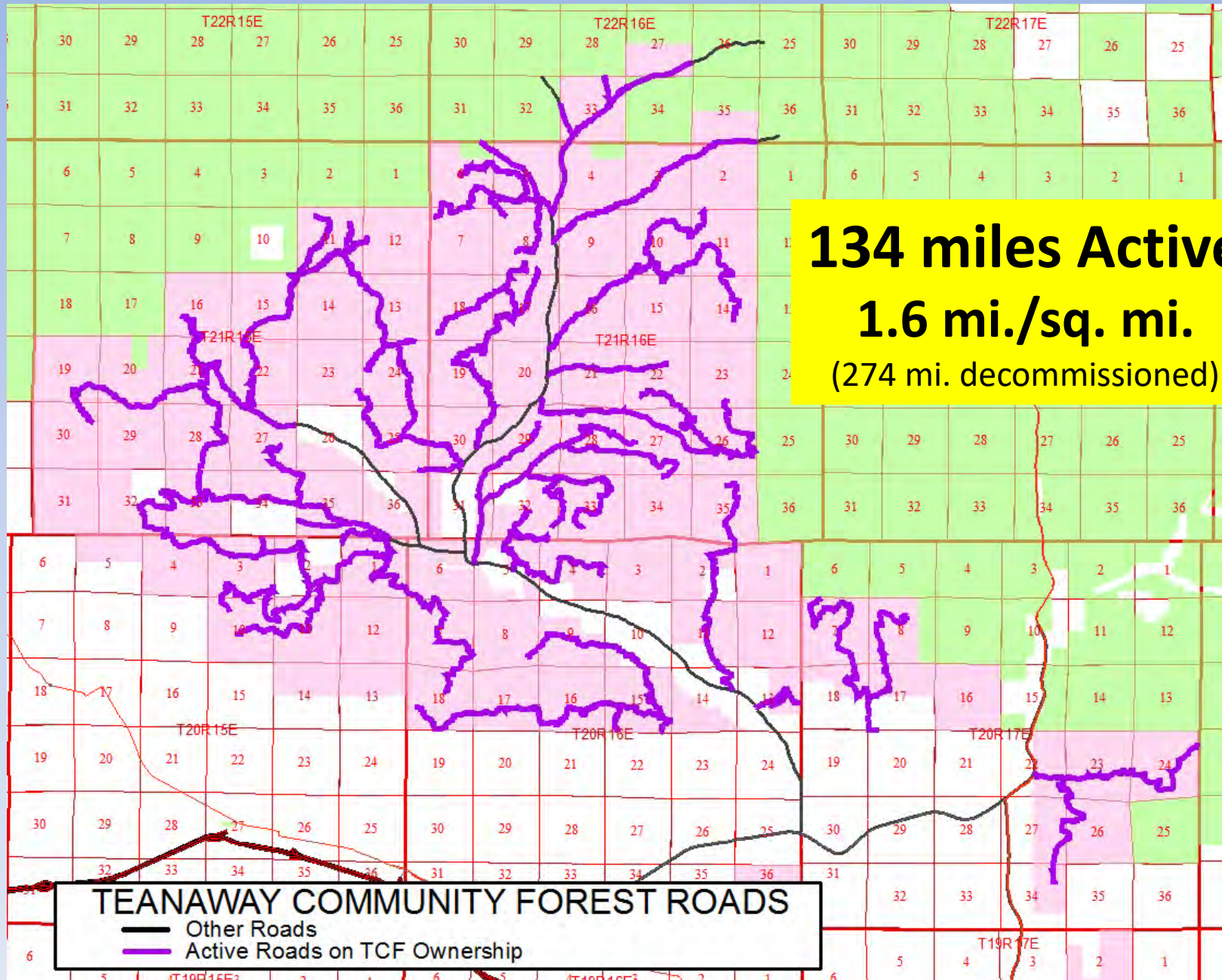
339 miles Active
3.9 mi./sq. mi.
(69 mi. decommissioned)

TEANAWAY COMMUNITY FOREST ROADS

- Other Roads
- Active Roads on TCF Ownership



TCF ROADS PROPOSED TO BE ACTIVE



Road Abandonment:

11.7 miles abandoned; 85 miles maintained



Fine Sediment Treatment



Reduced 160 tons/year
of fine sediment
(65% of total)



Fish Passage Barrier Assessment

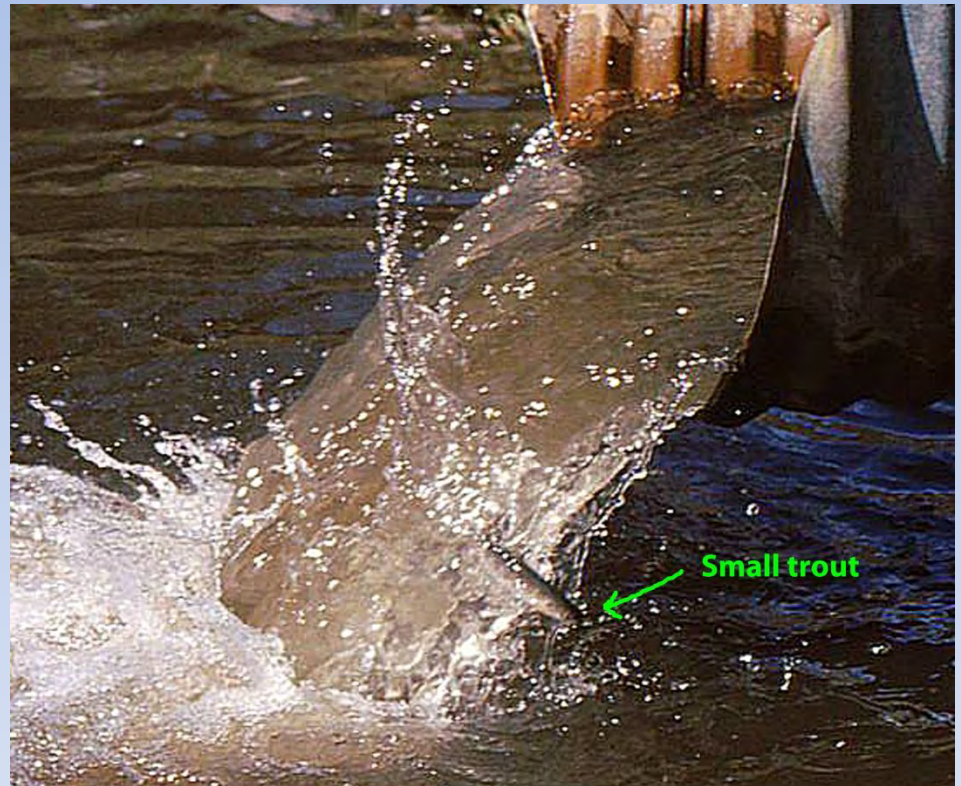
Fish Passage Barrier and Surface Water Diversion Screening Assessment and Prioritization Manual



WASHINGTON DEPARTMENT OF
FISH & WILDLIFE

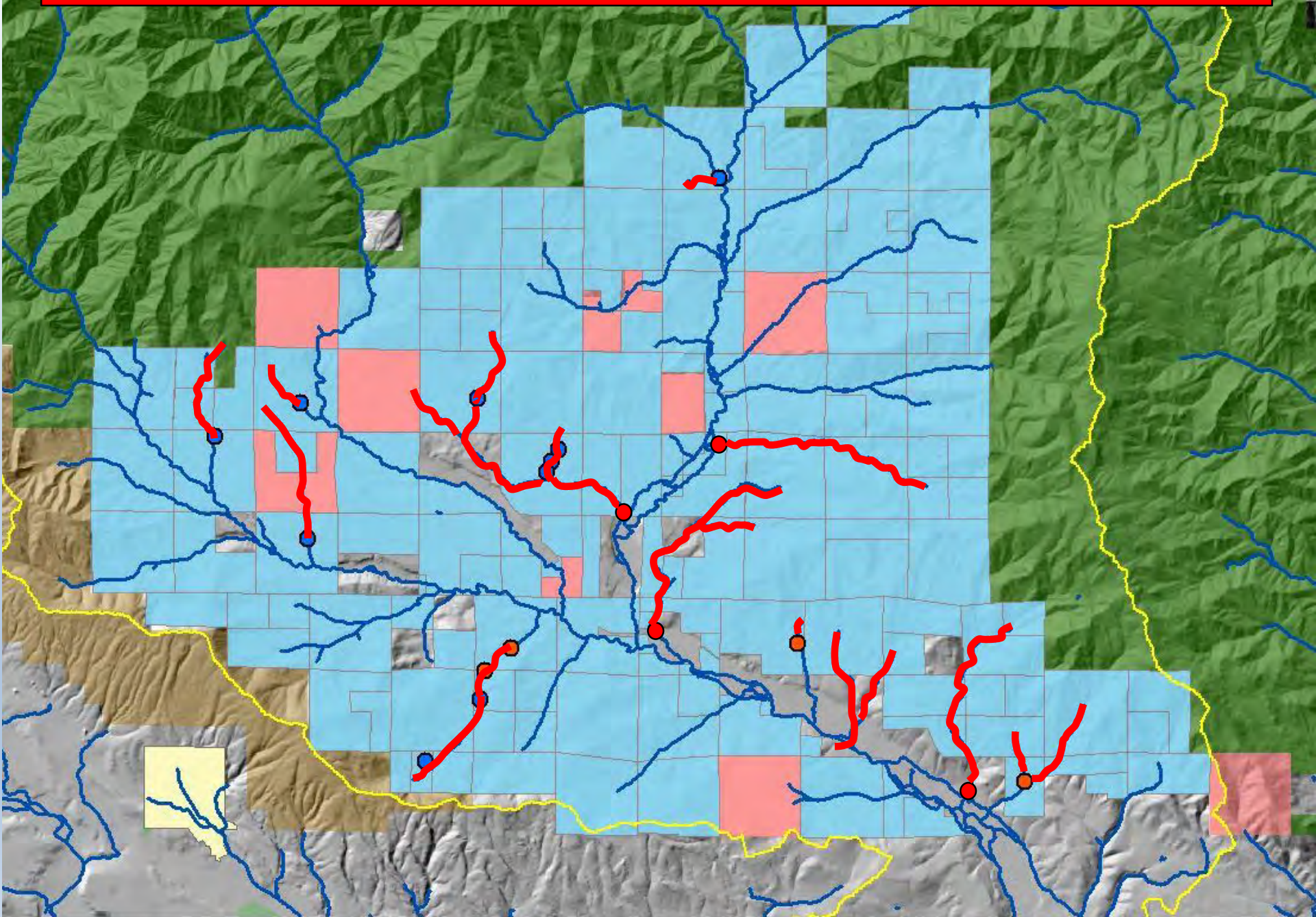
HABITAT PROGRAM

Technical Applications (TAPPS) Division



This River Runs Forever
Yakima Basin Integrated Plan

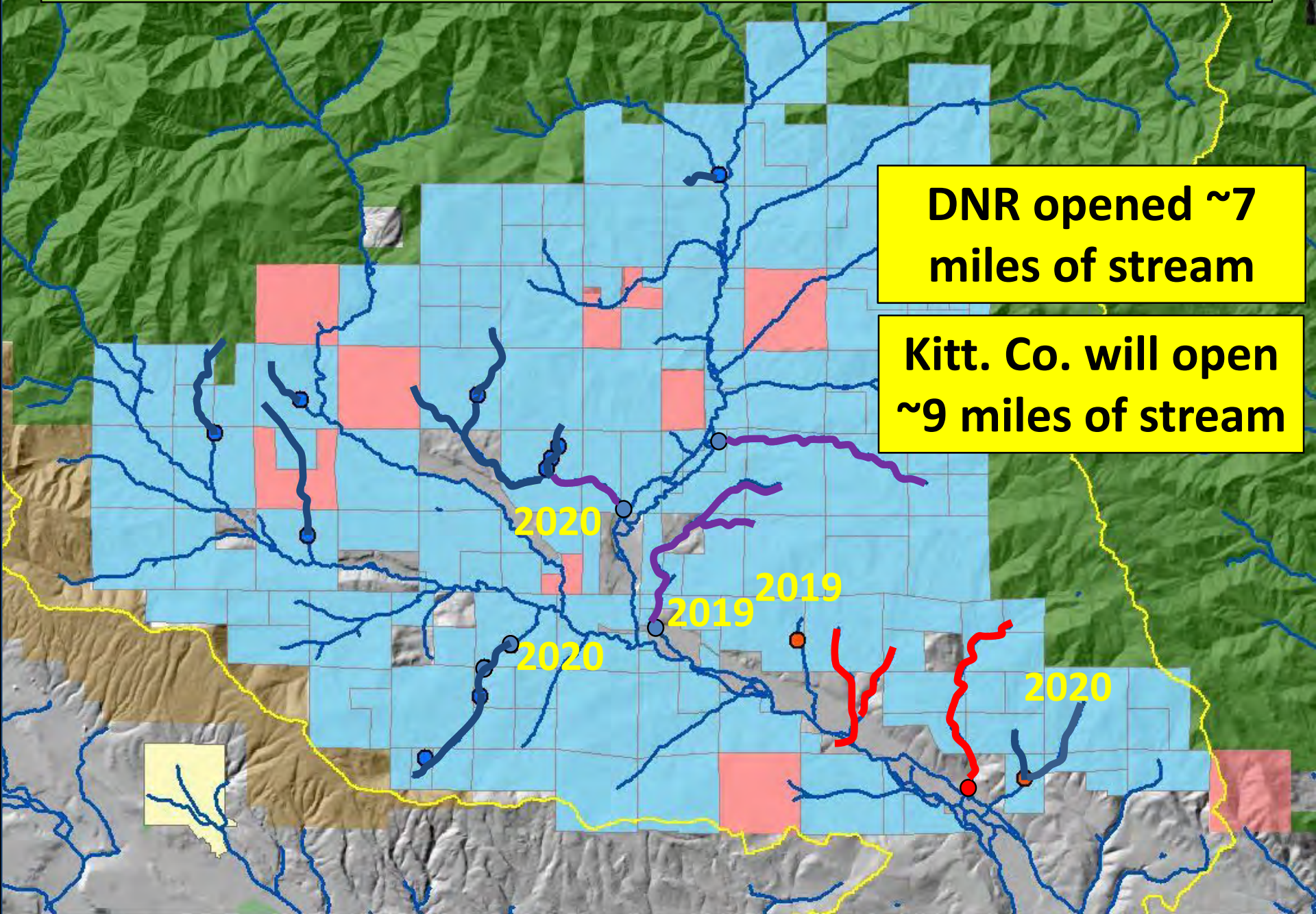
Teanaway Community Forest Fish Passage Barriers



Teaway Community Forest Fish Passage Opened

DNR opened ~7 miles of stream

Kitt. Co. will open ~9 miles of stream



Teanaway Community Forest Fish Passage Barriers



BEFORE

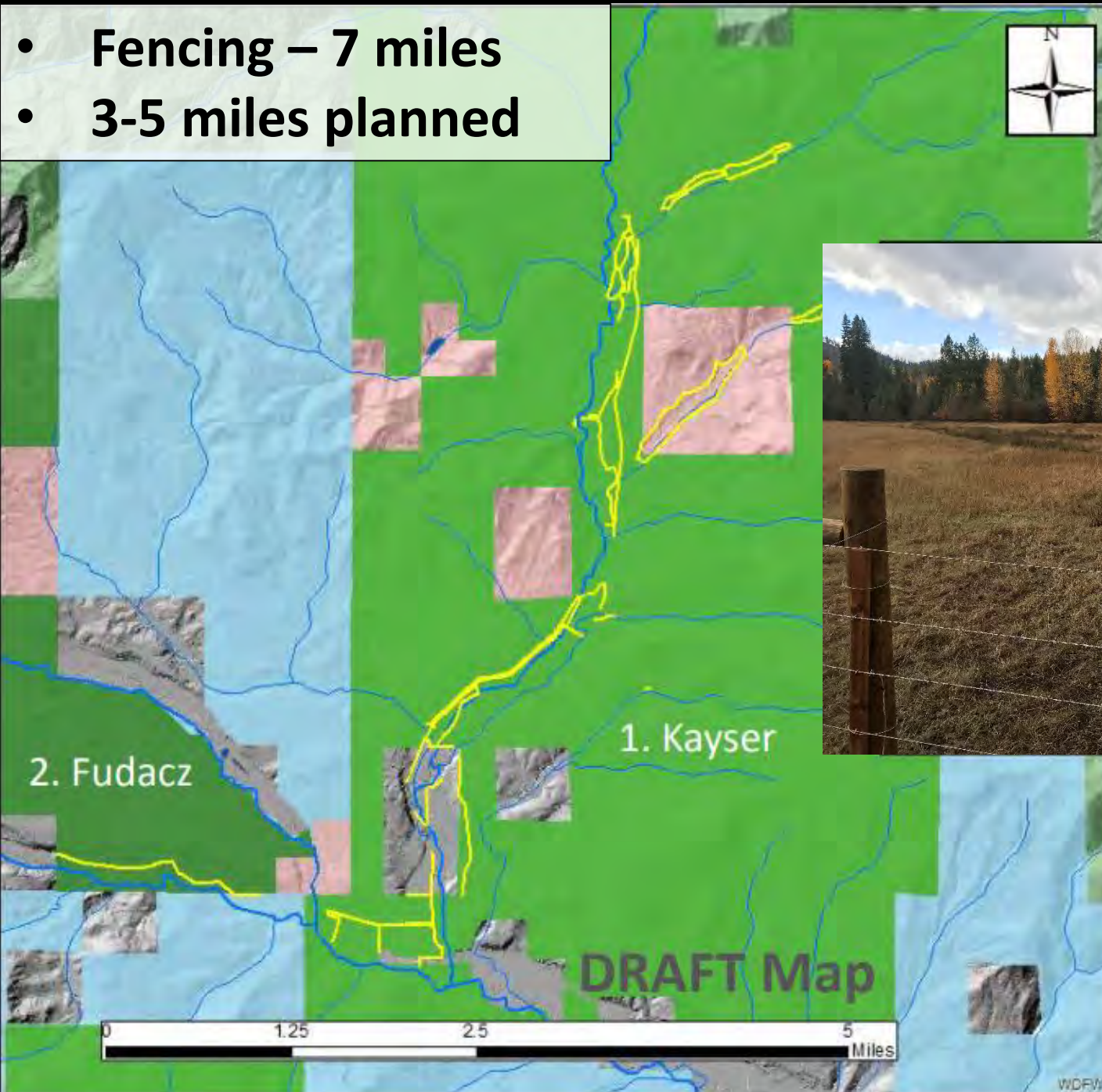


After

Past Livestock Access Points



- Fencing – 7 miles
- 3-5 miles planned



Note: all phases of fencing shown

Teanaway Fish & Wildlife



Bull Trout



Teanaway Steelhead



Teanaway Wolf



Chinook Salmon



Teanaway Spotted Owl



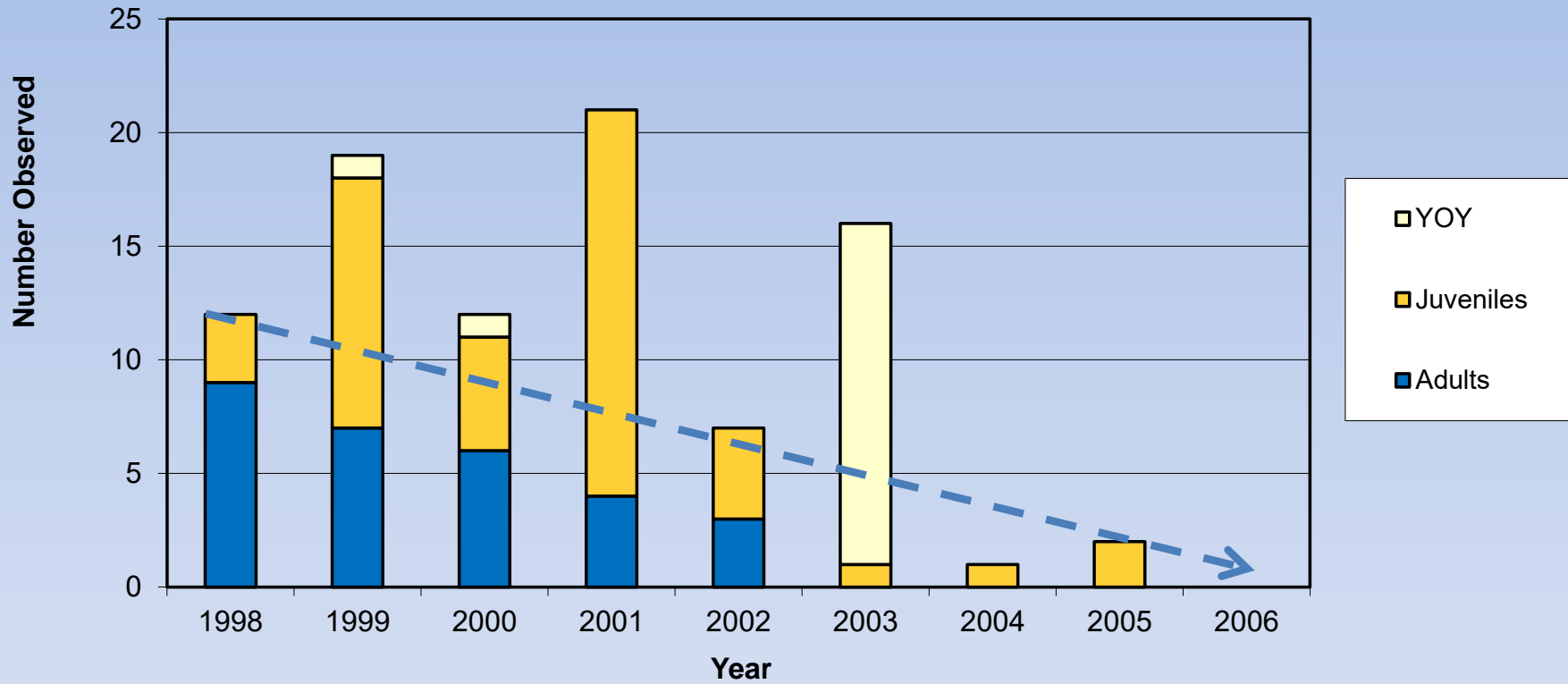
Elk



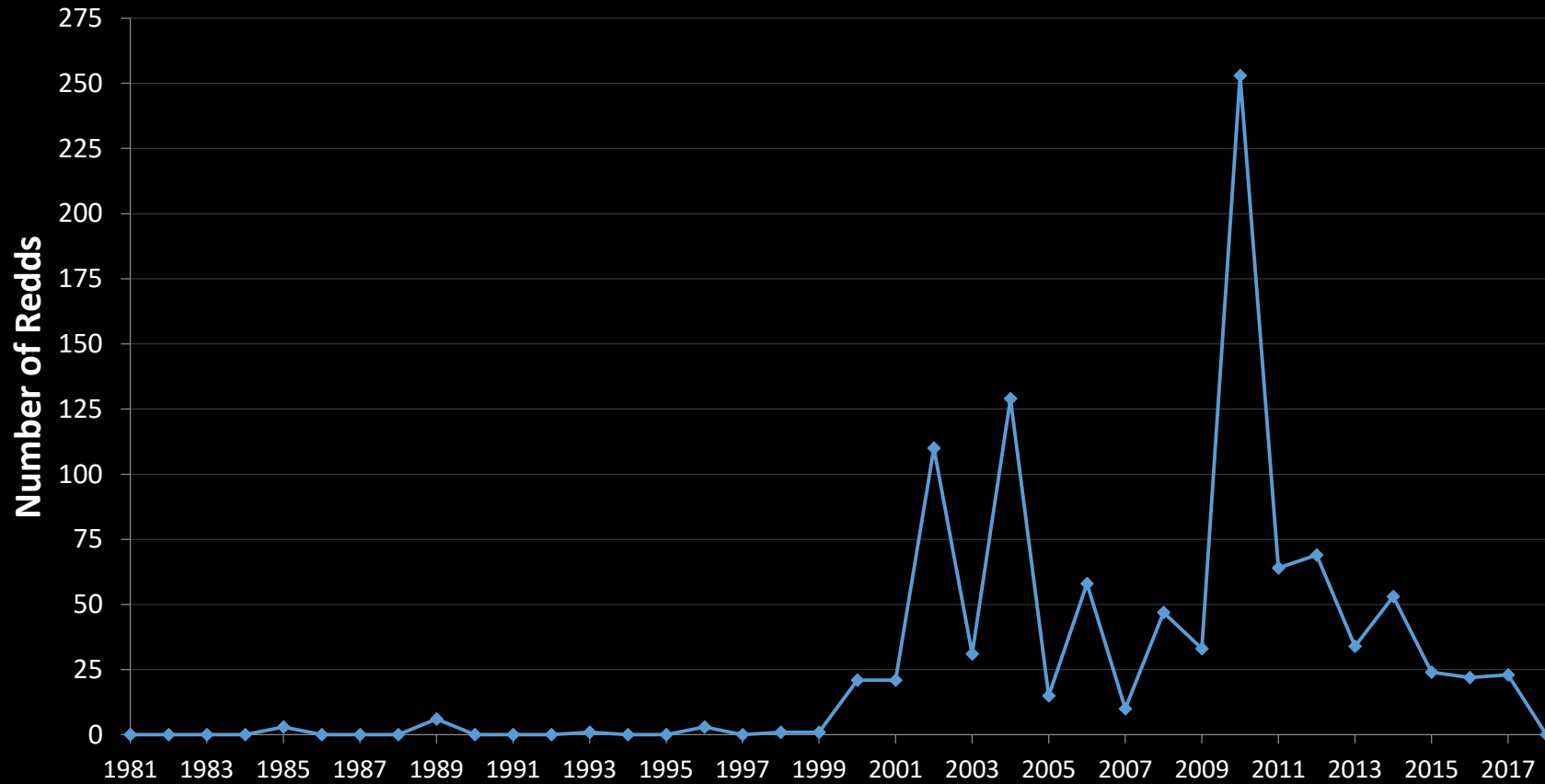


Teaway Bull Trout

Night Snorkel BT Observations (EIT)



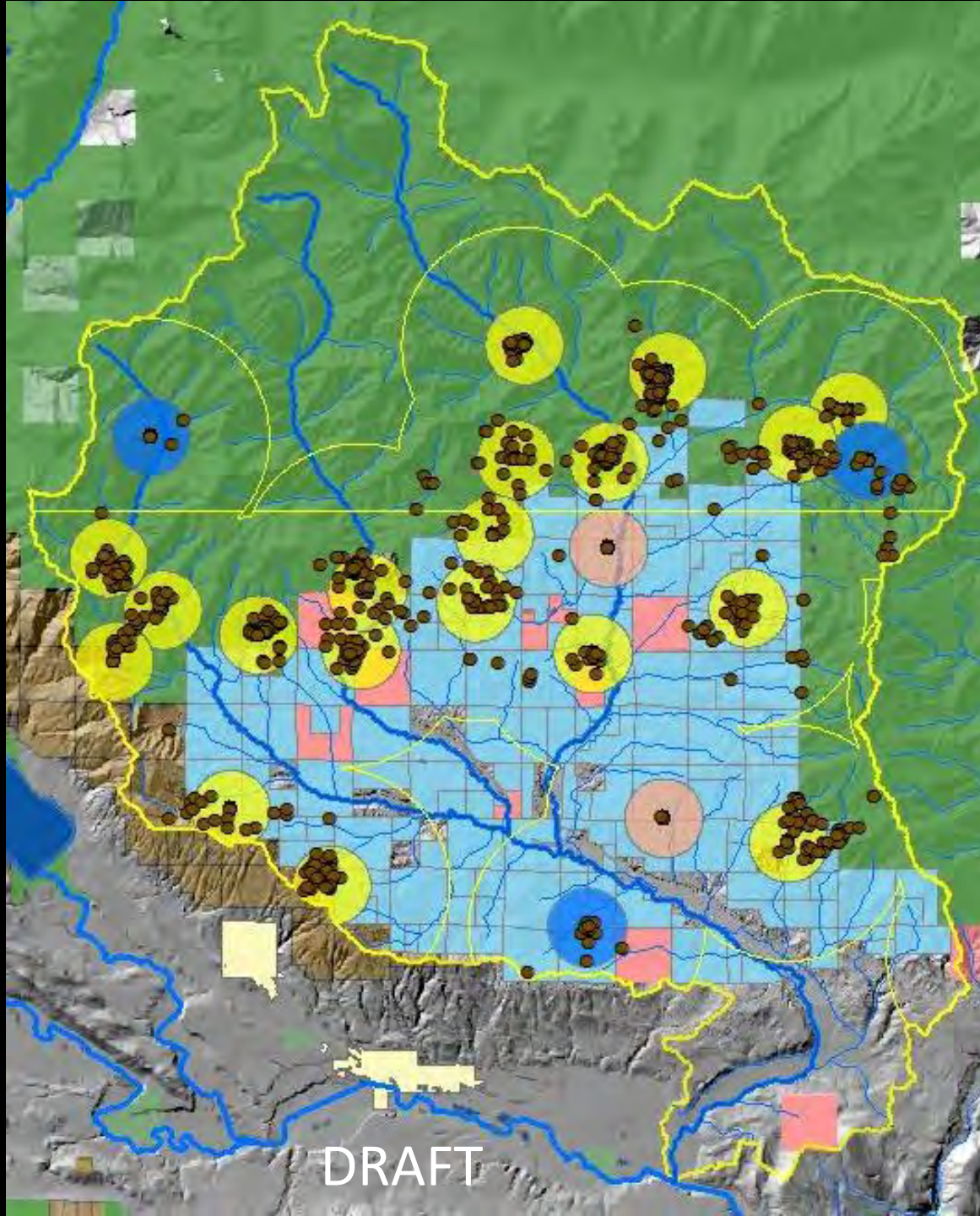
Teaway Spring Chinook Redd Counts 1981-2018





Spotted Owl highest-site-status & telemetry 1989-2018

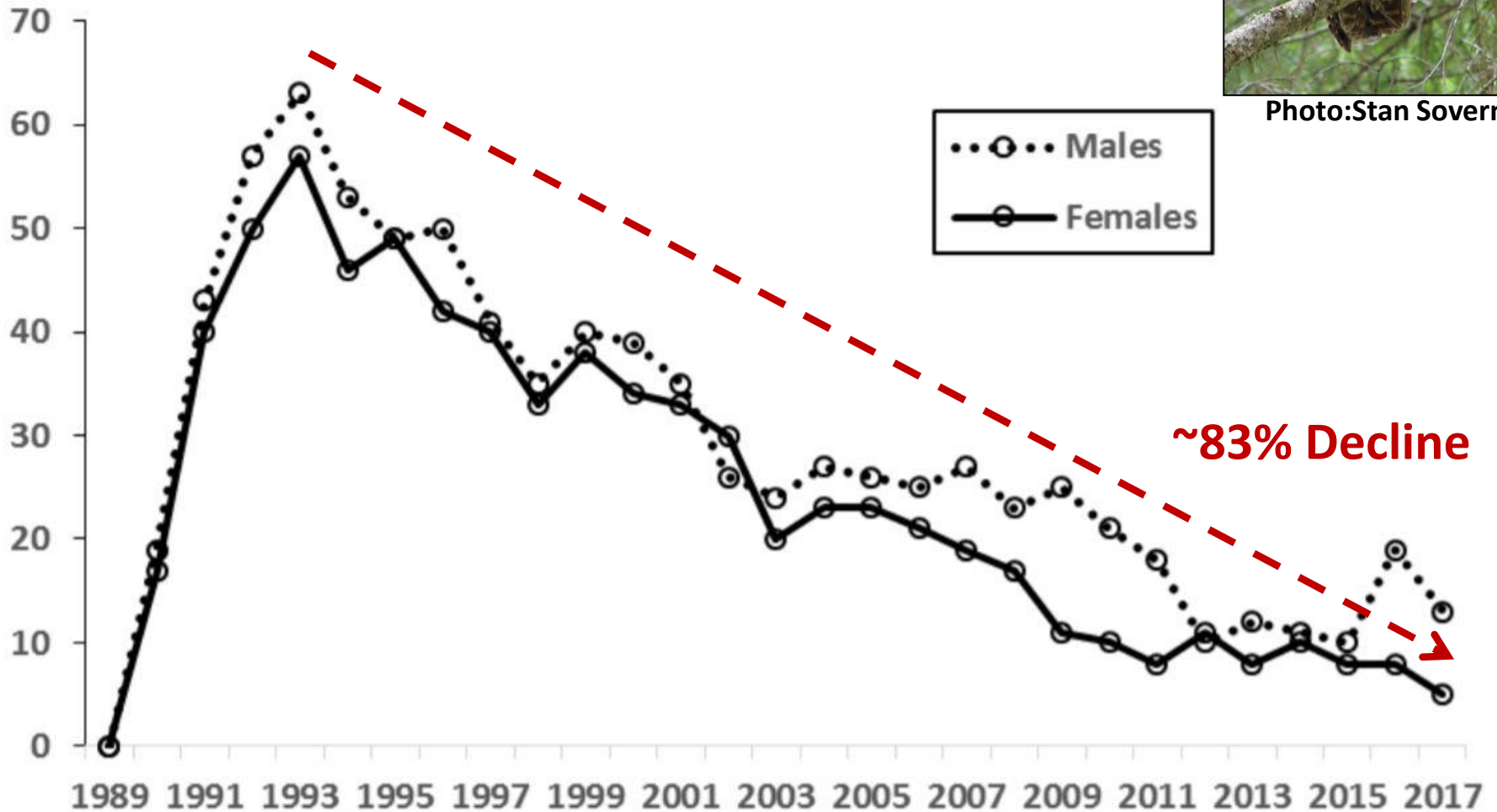
- = Reproductive
- = Pair
- = Single



Spotted Owl Population Cle Elum Demographic Area



Photo: Stan Sovern



Teanaway Wolf Pack



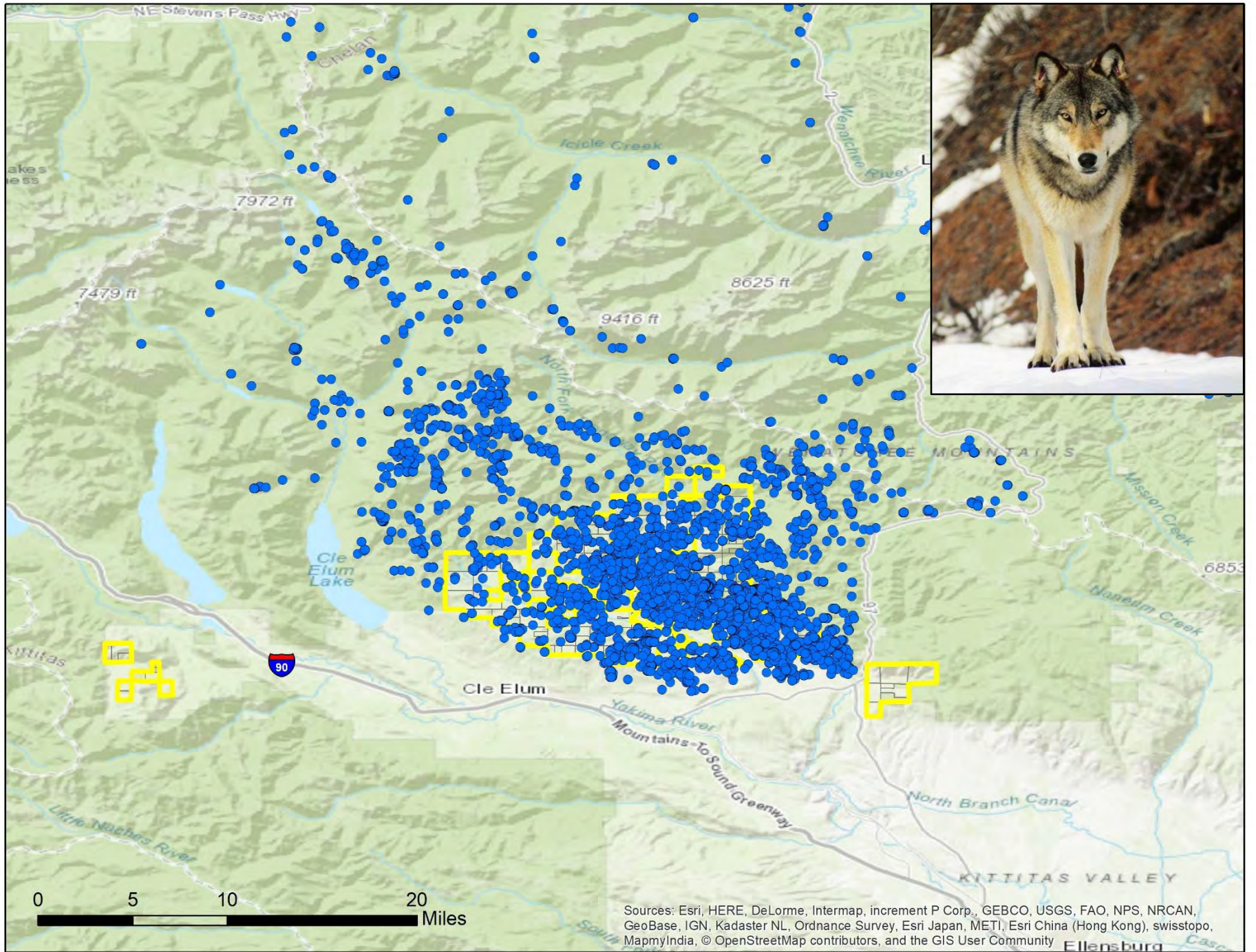
Teanaway Wolf Pack

Stealth Cam

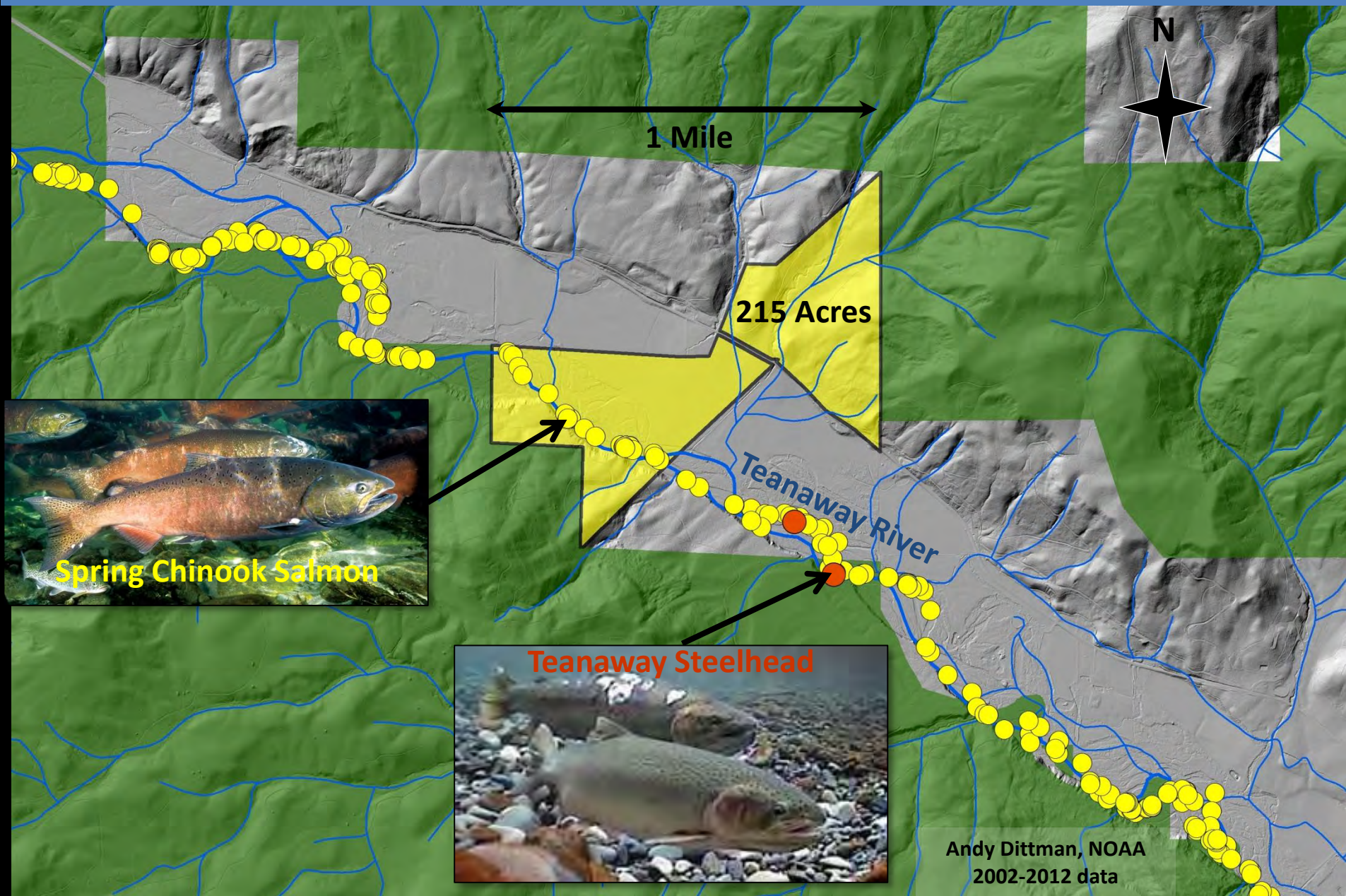
033 F

02-03-2012 11:04:02

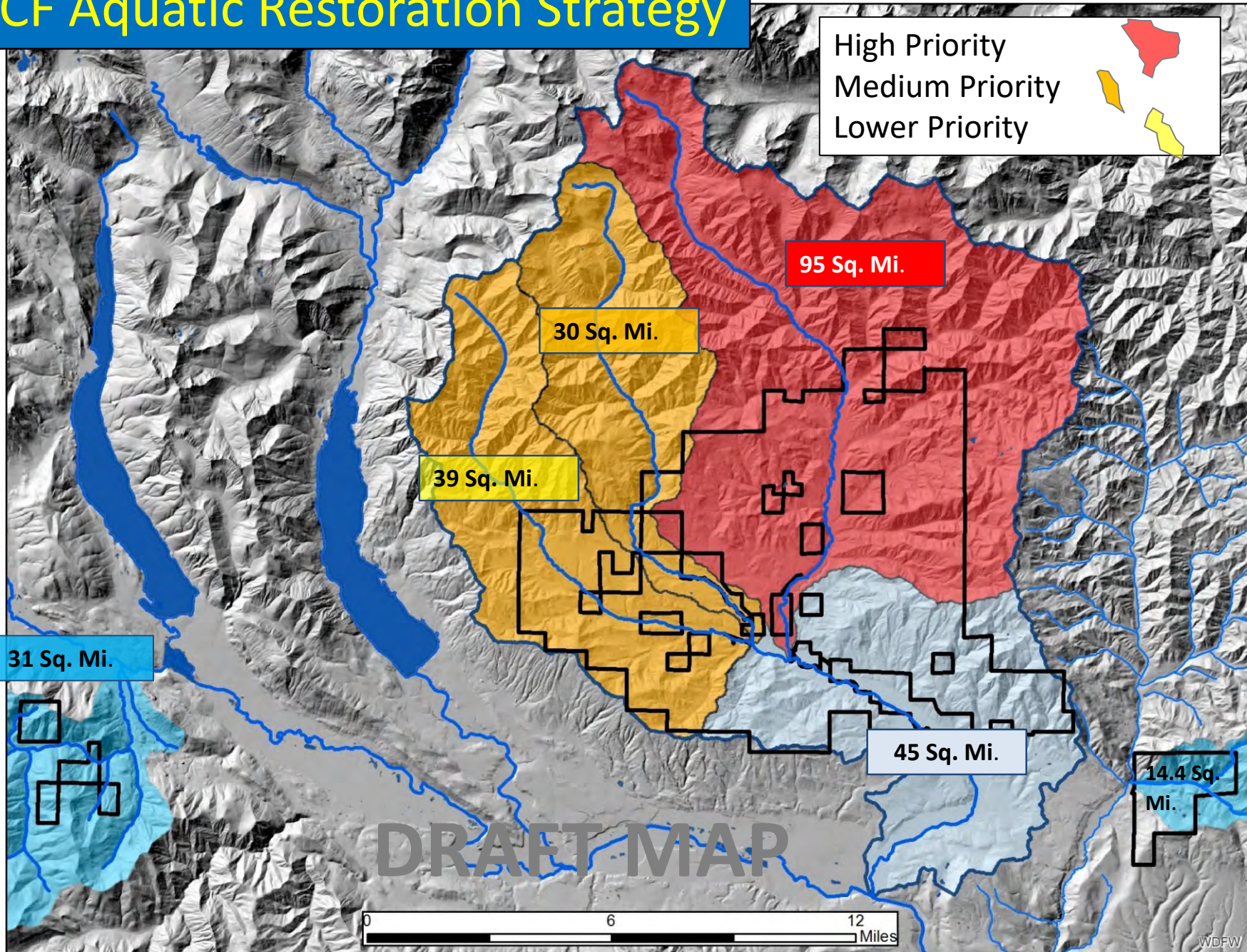




Teaway Valley Family Farm – USFWS Section 6/WDFW Acquisition



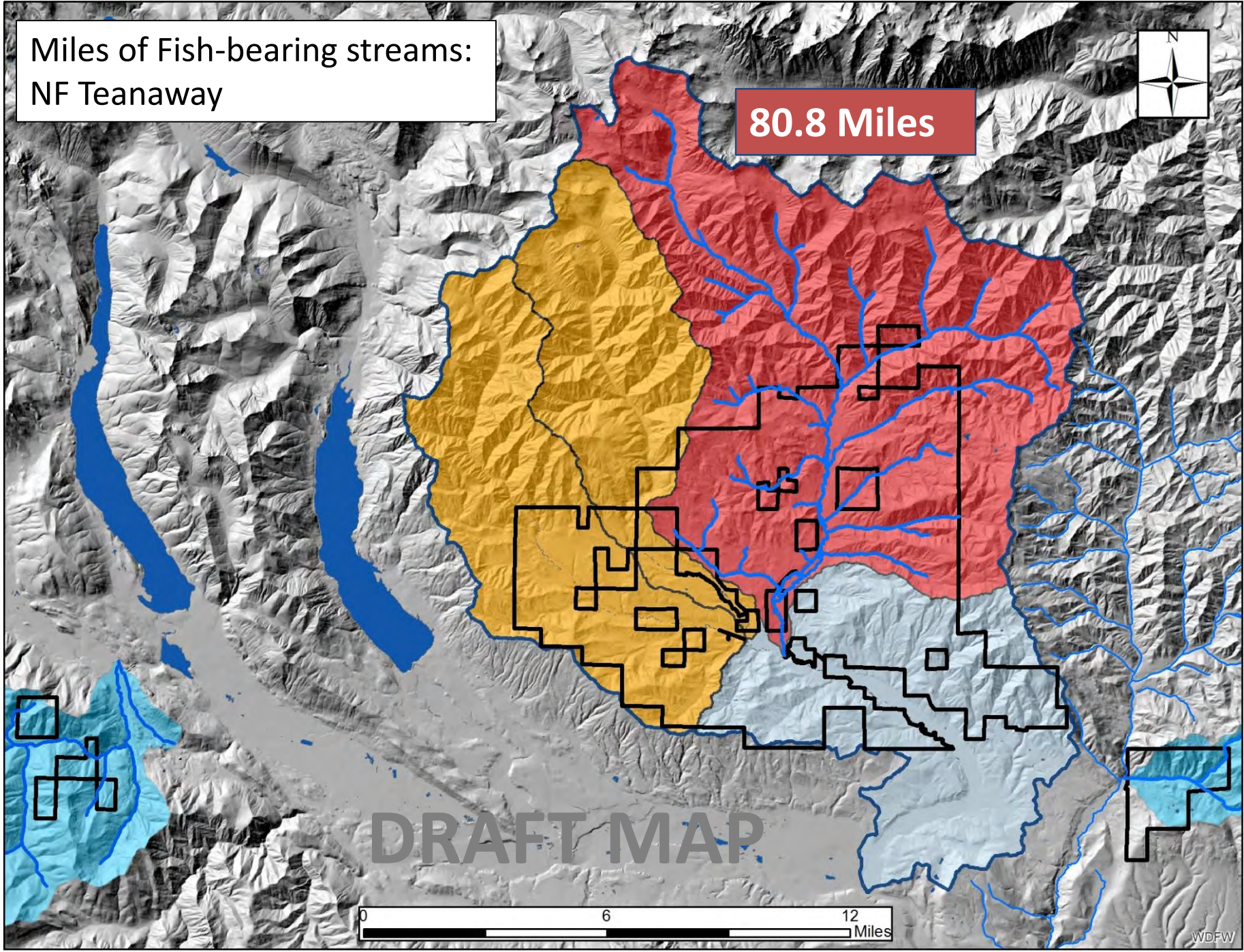
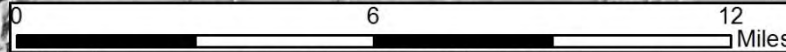
TCF Aquatic Restoration Strategy



Miles of Fish-bearing streams:
NF Teanaway

80.8 Miles

DRAFT MAP

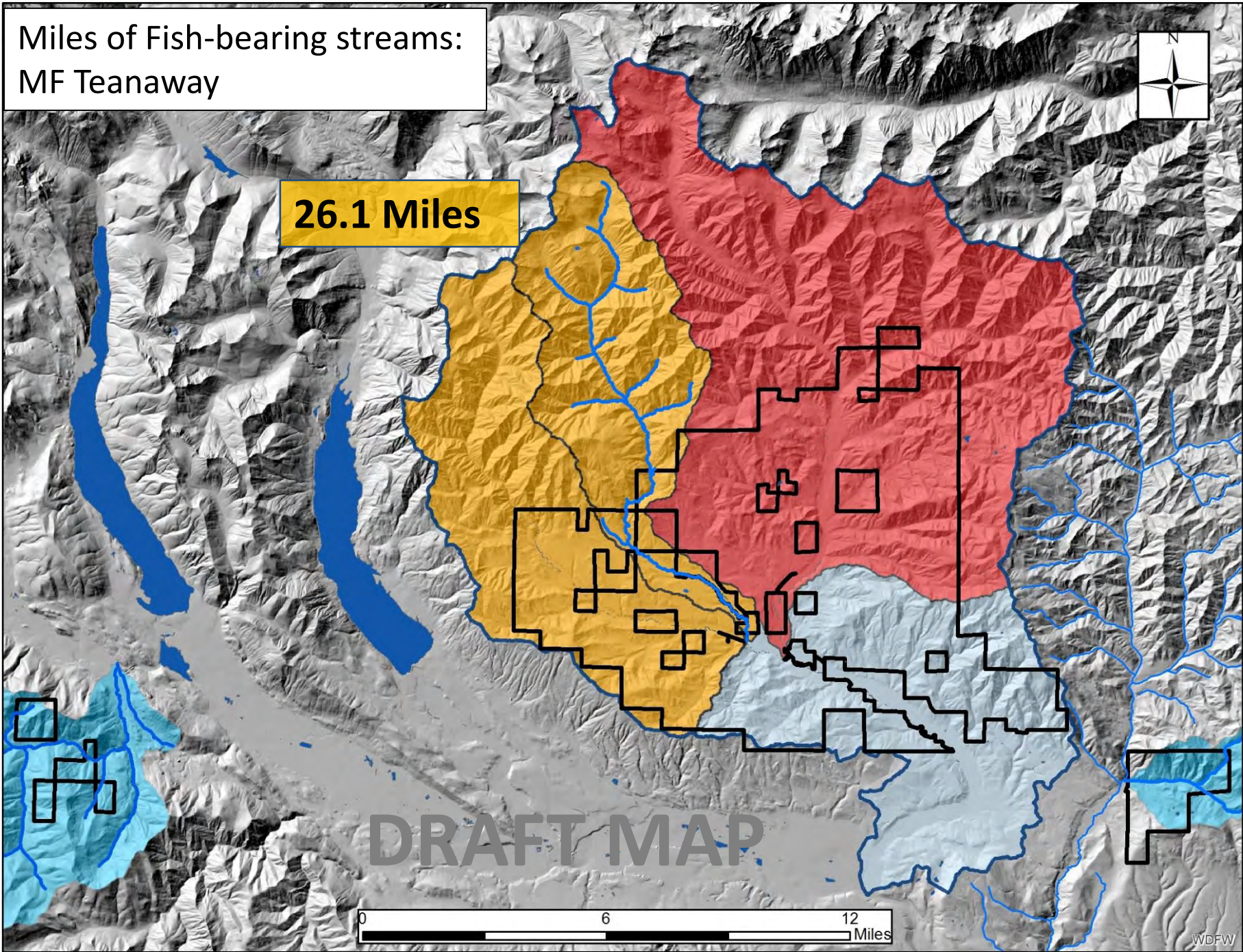
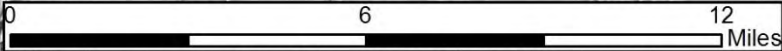


Miles of Fish-bearing streams:
MF Teanaway



26.1 Miles

DRAFT MAP

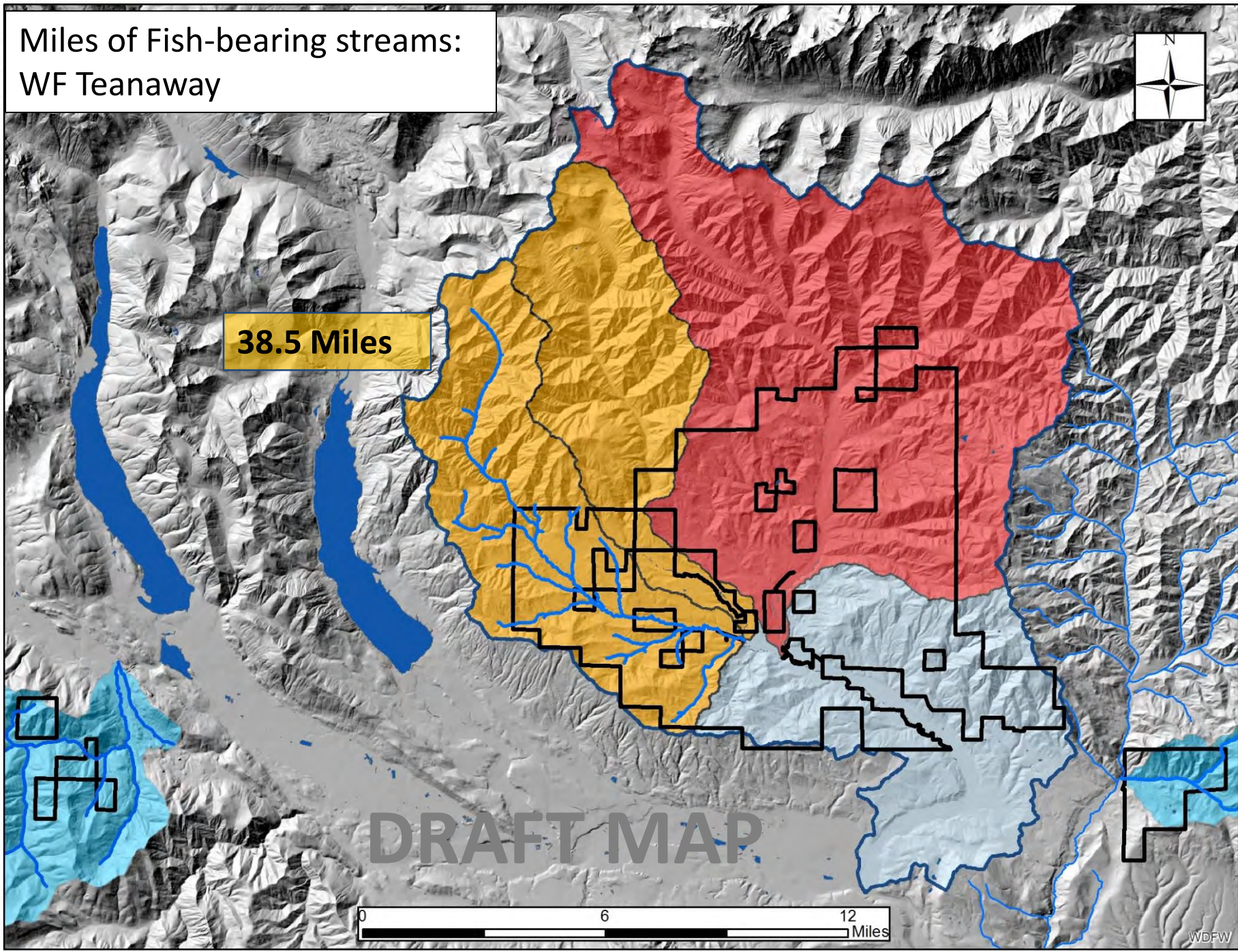
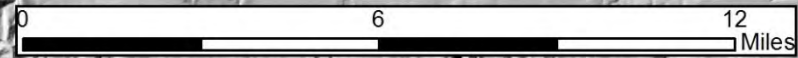


Miles of Fish-bearing streams:
WF Teanaway

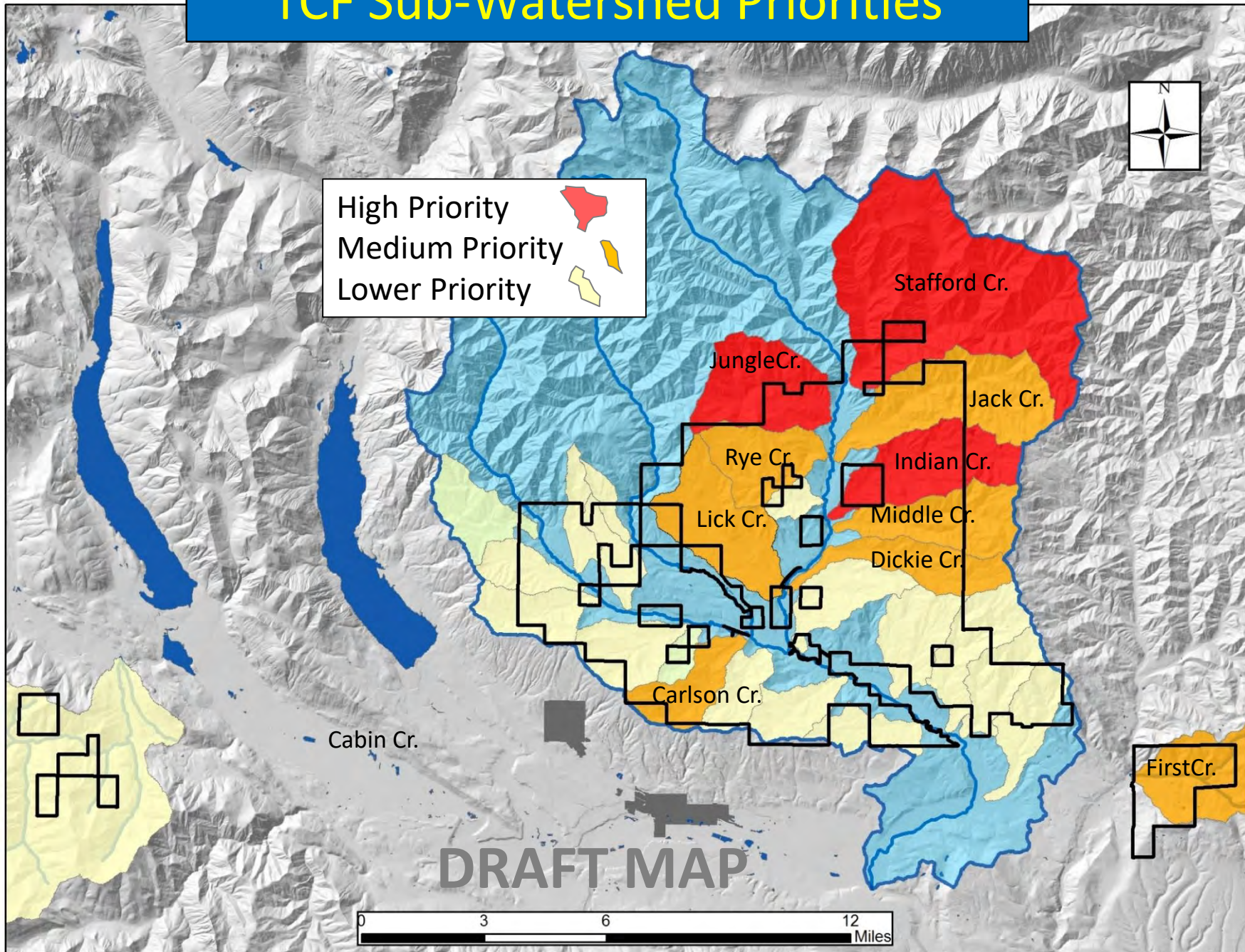


38.5 Miles



DRAFT MAP

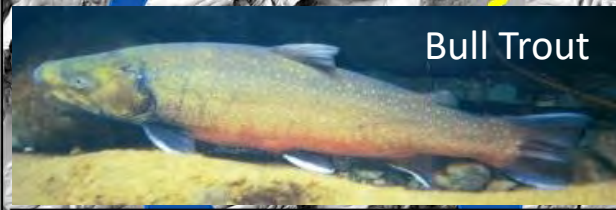
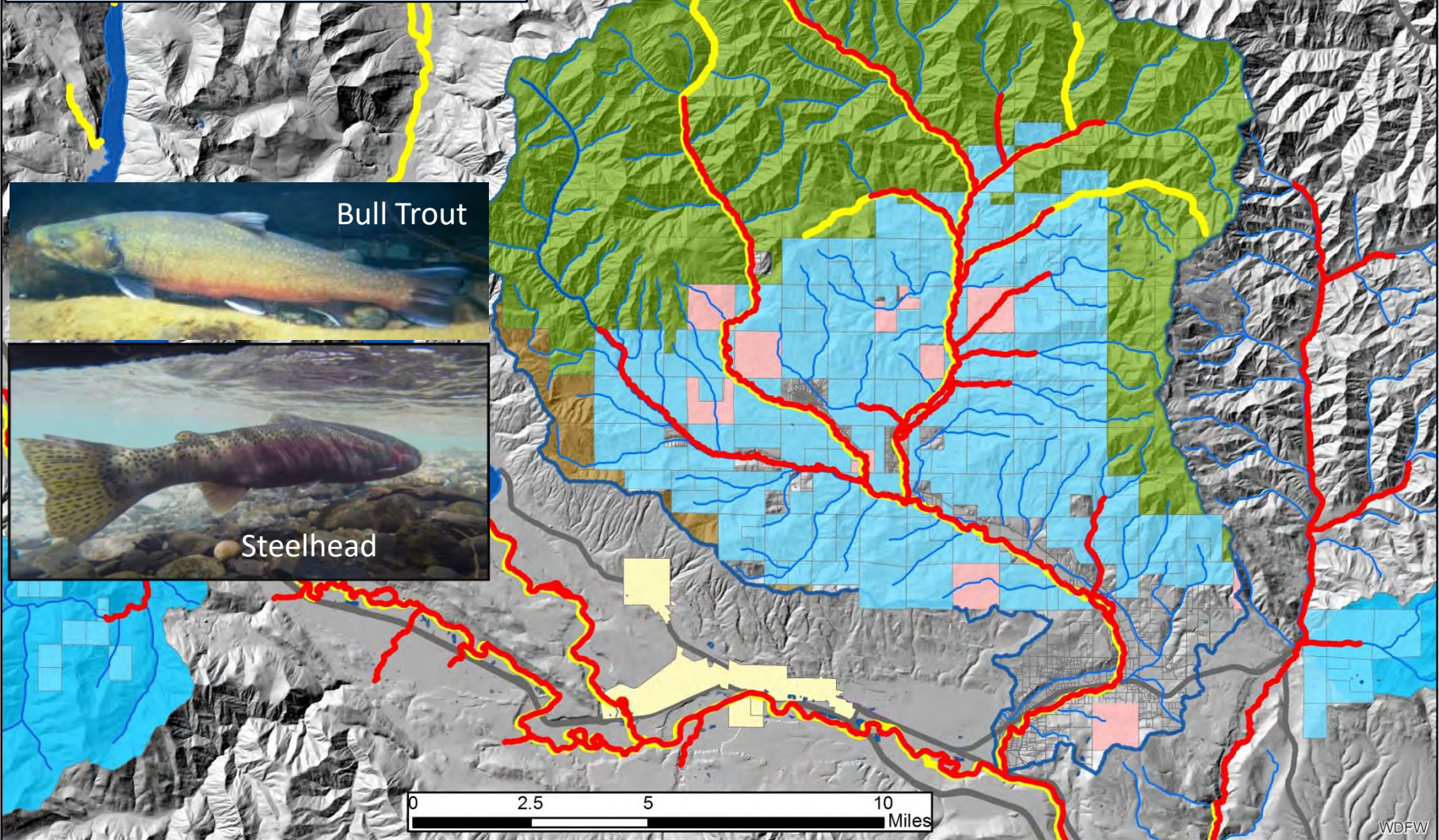


TCF Sub-Watershed Priorities



Critical Habitat Designations:

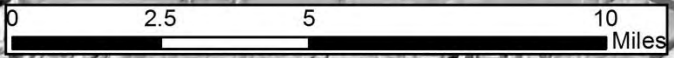
Bull trout 
Steelhead 



Bull Trout



Steelhead



Teanaway Community Forest spawning data:

- Steelhead redds 2012 - 2014
- Chinook redds 2002 - 2012

Bull Trout
Extirpated



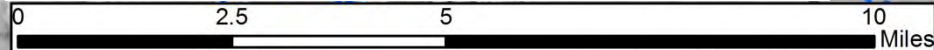
Steelhead



Chinook Salmon



Data courtesy of: A. Dittman, NOAA Fisheries
Zack Mays, YN



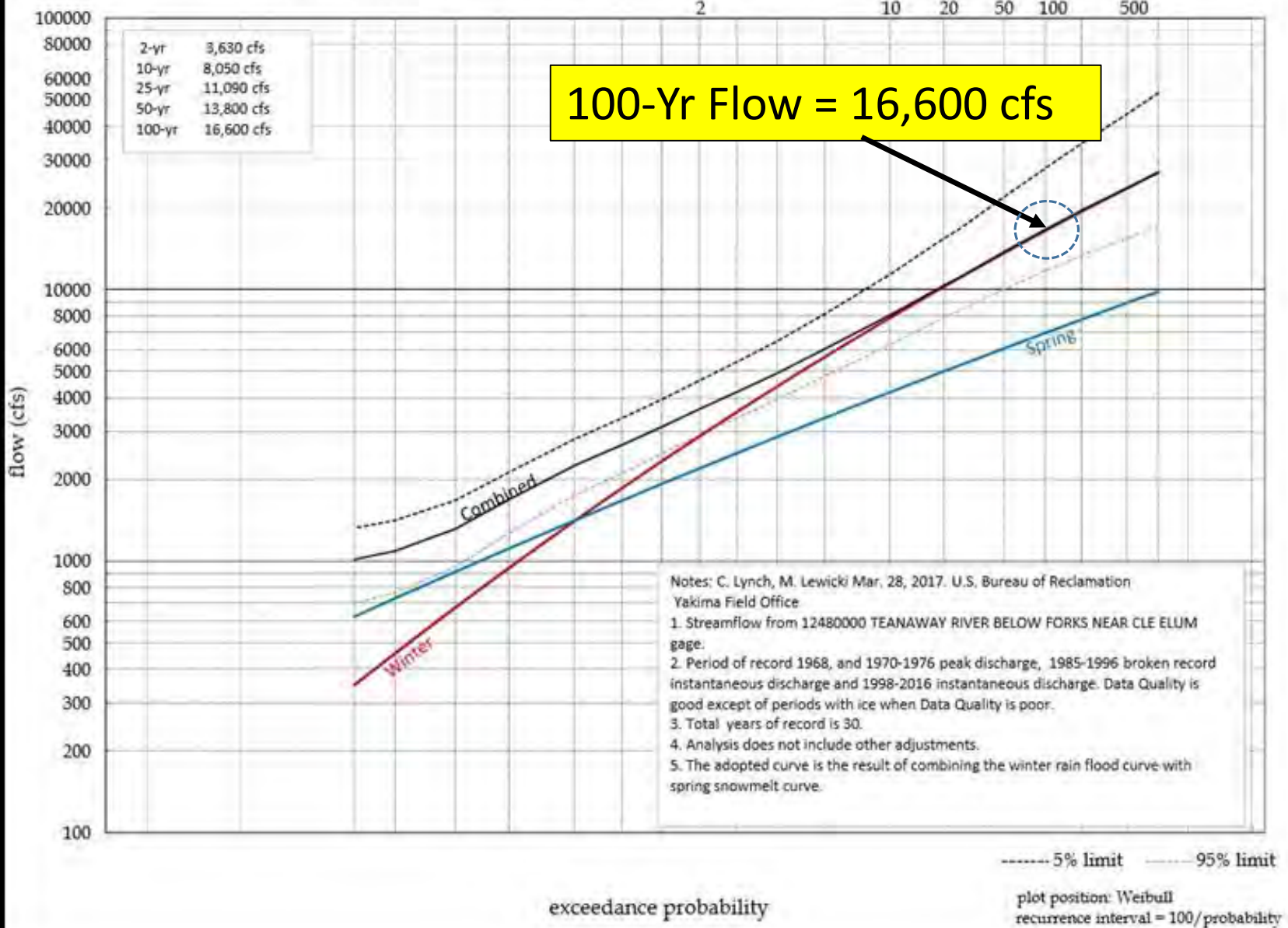
LiDAR
2015

NF Teanaway Road

A grayscale LiDAR topographic map showing terrain contours. The map displays a network of ridges and valleys. A road, labeled 'NF Teanaway Road', runs diagonally from the bottom right towards the center. The terrain is characterized by numerous small-scale contour lines, indicating a hilly or uneven surface. The road is a prominent linear feature, appearing as a straight line with a slight curve, cutting across the natural topographic contours.

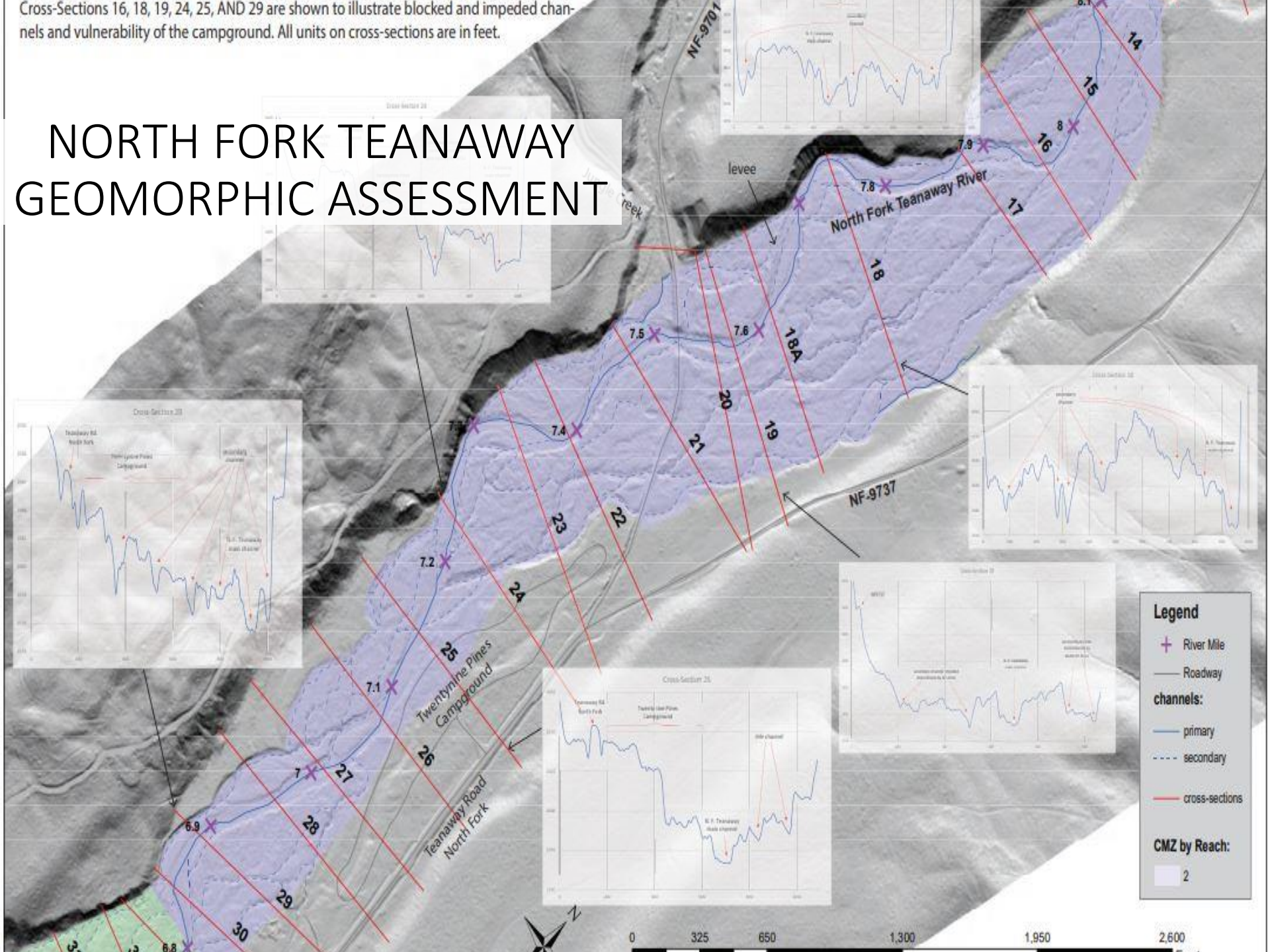
HYDROLOGY USBOR Gauge Analysis

USGS 12480000 TEANAWAY RIVER BELOW FORKS NEAR CLE ELUM, WA



Cross-Sections 16, 18, 19, 24, 25, AND 29 are shown to illustrate blocked and impeded channels and vulnerability of the campground. All units on cross-sections are in feet.

NORTH FORK TEANAWAY GEOMORPHIC ASSESSMENT



Legend

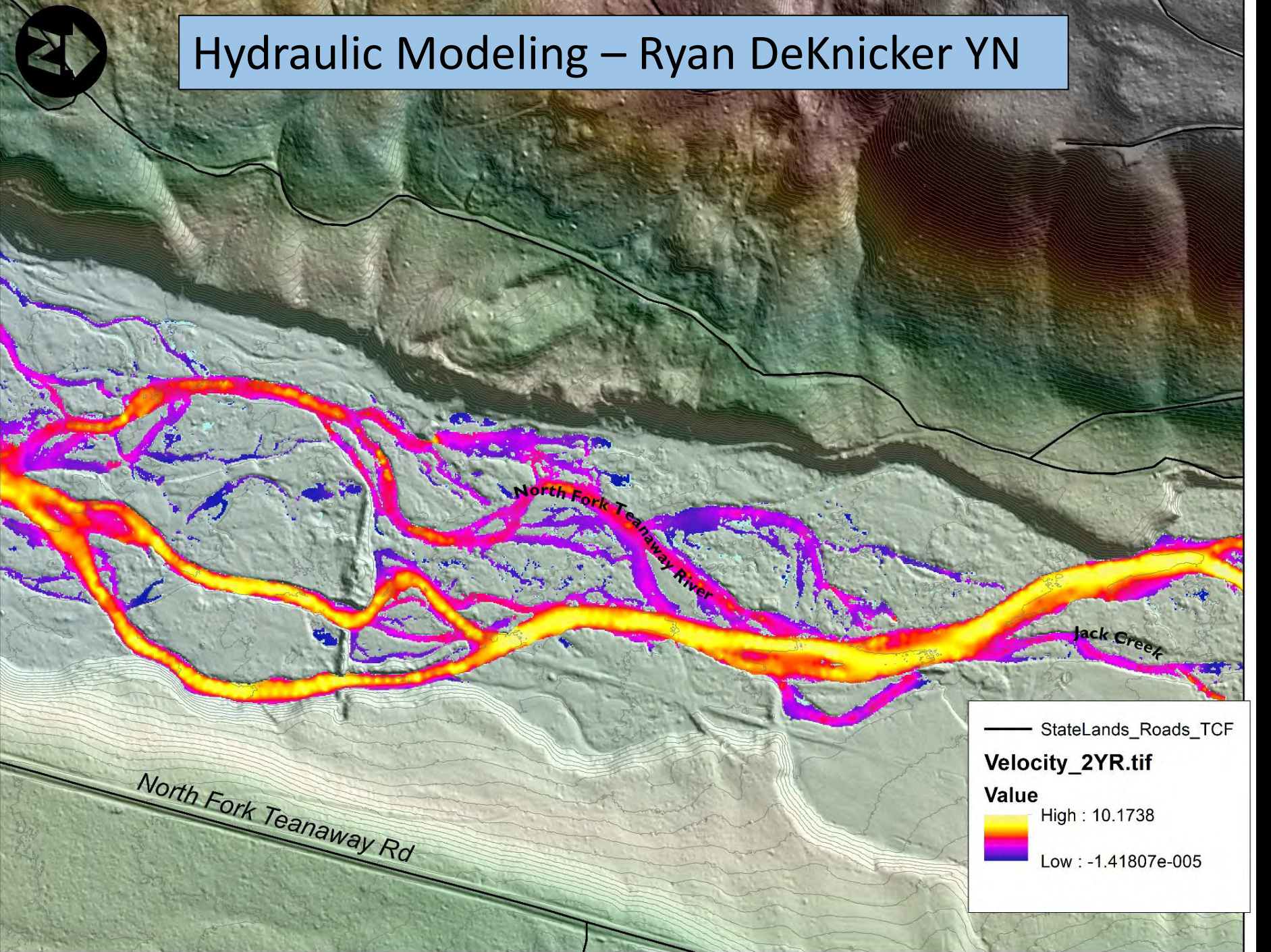
- ⊕ River Mile
- Roadway channels
- primary
- - - secondary
- cross-sections

CMZ by Reach:

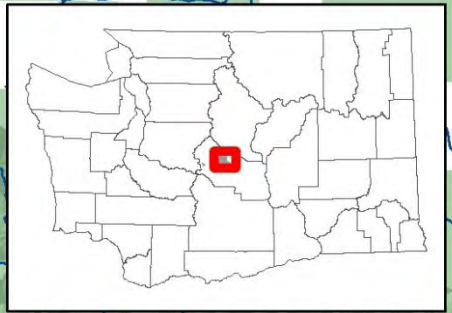
- 2








Hydraulic Modeling – Ryan DeKnicker YN

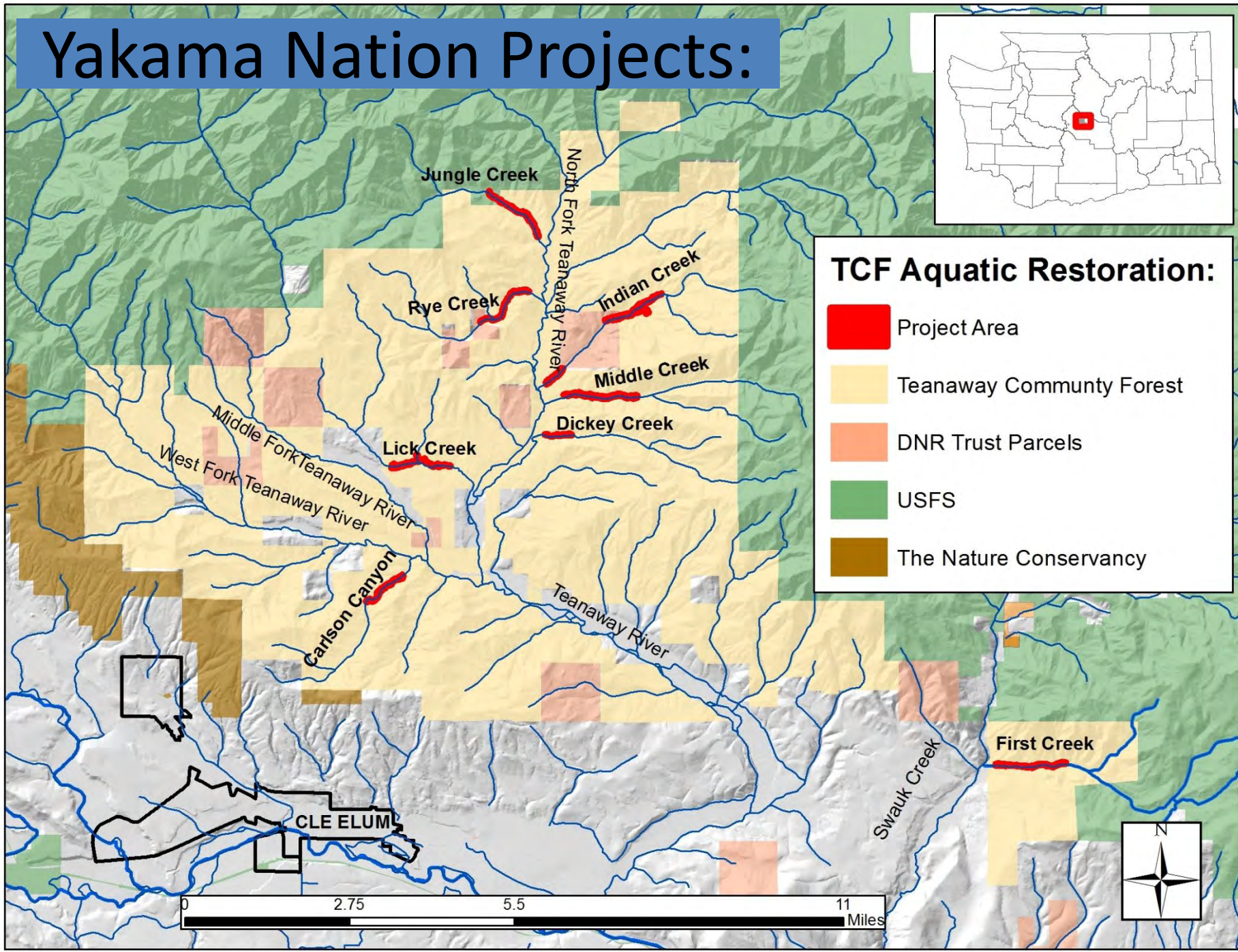


Yakama Nation Projects:



TCF Aquatic Restoration:

-  Project Area
-  Teanaway Community Forest
-  DNR Trust Parcels
-  USFS
-  The Nature Conservancy



Indian Creek

2003



Photo credit: Jim Matthews

Indian Creek

2008

04/30/2008

Photo credit: Jim Matthews

Indian Creek

2013



Photo credit: Jim Matthews

Yakama Nation Restoration

2019



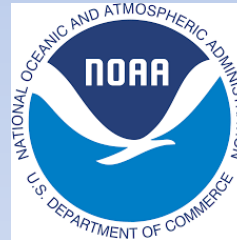
Yakama Nation Restoration

2018



Photo credit: Ryan Deknikker

Value Partners & Matching Funds:



Questions ?

