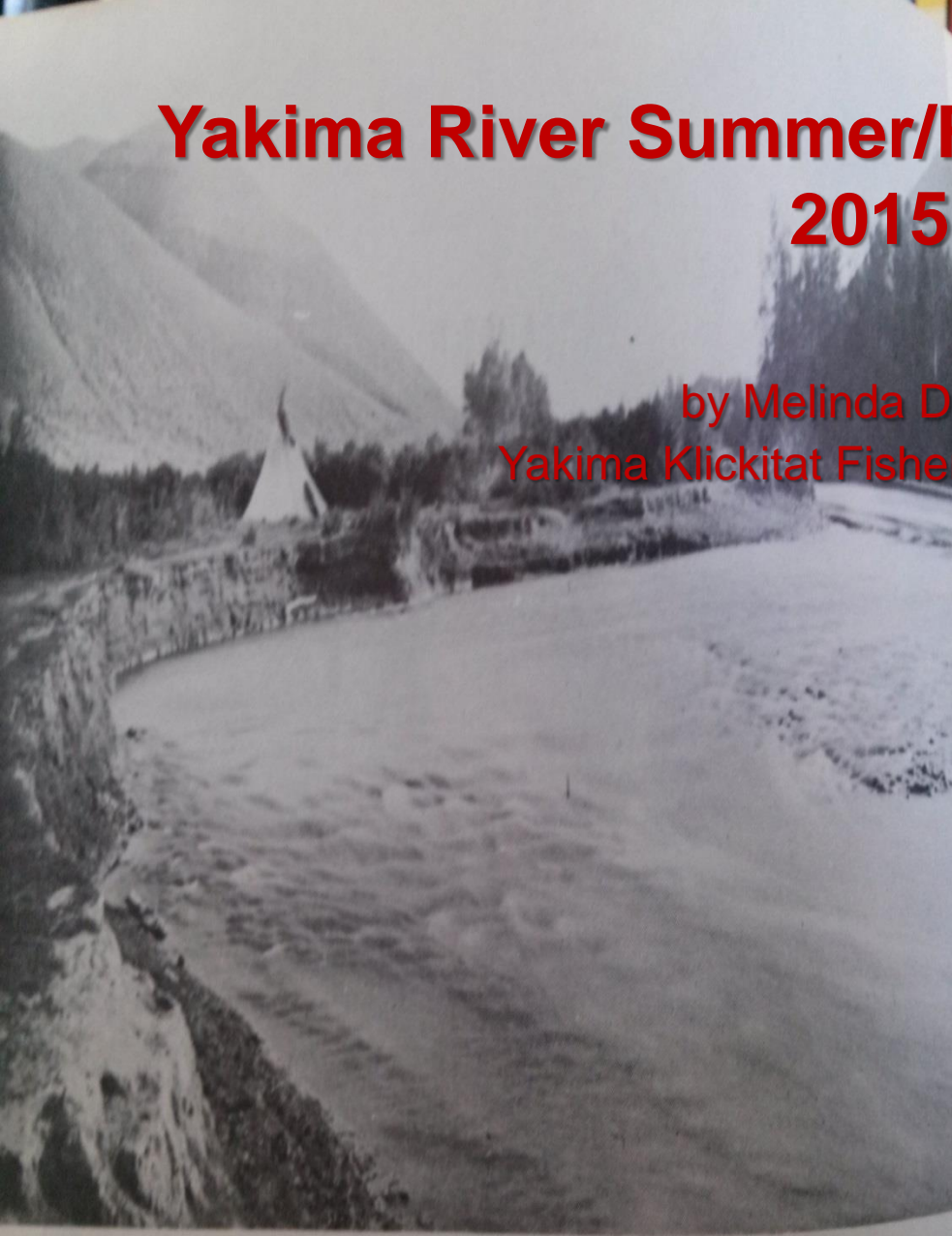
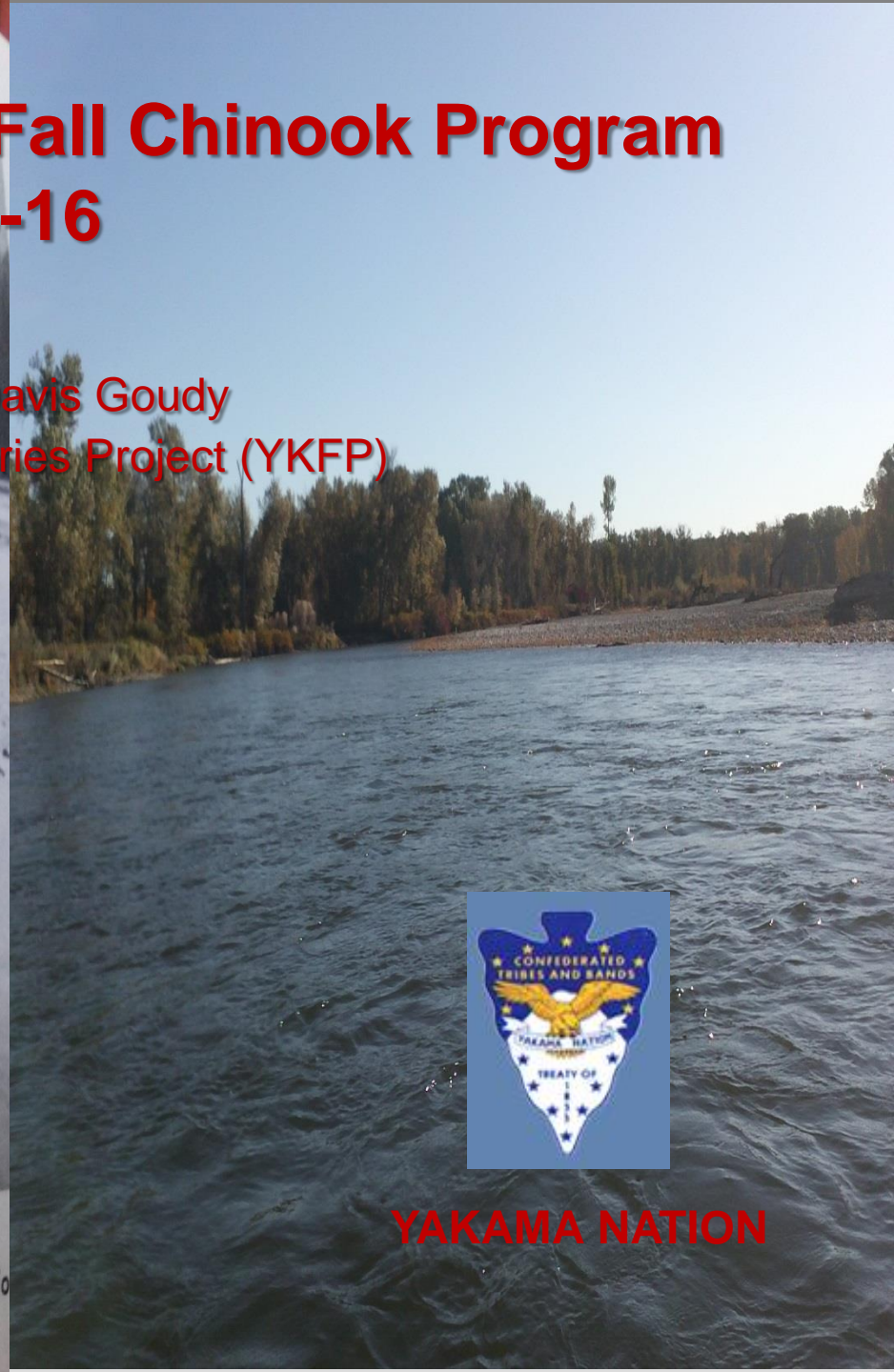


Yakima River Summer/Fall Chinook Program 2015-16

by Melinda Davis Goudy
Yakima Klickitat Fisheries Project (YKFP)



INDIAN DAYS—Tepees were frequent along Yakima River at The Gap. Mrs. Ray D. Cook collection



YAKAMA NATION

Thank You

Yakama Nation Tribal Council

Prosser and Marion Drain Hatchery: Joe Blodgett, Michael Fiander and the Hatchery crews

Roza: Mark Johnston and Joe Hoptowit

Cle Elum: Charlie Strom Vernon Bogart Jr and Ted Martin

YN: Mel Sampson, Dave Fast, Todd Newsome, Bill Bosch, Dave Lind, Doug Neeley, Bill Fiander and Ida Sohappy-Ike

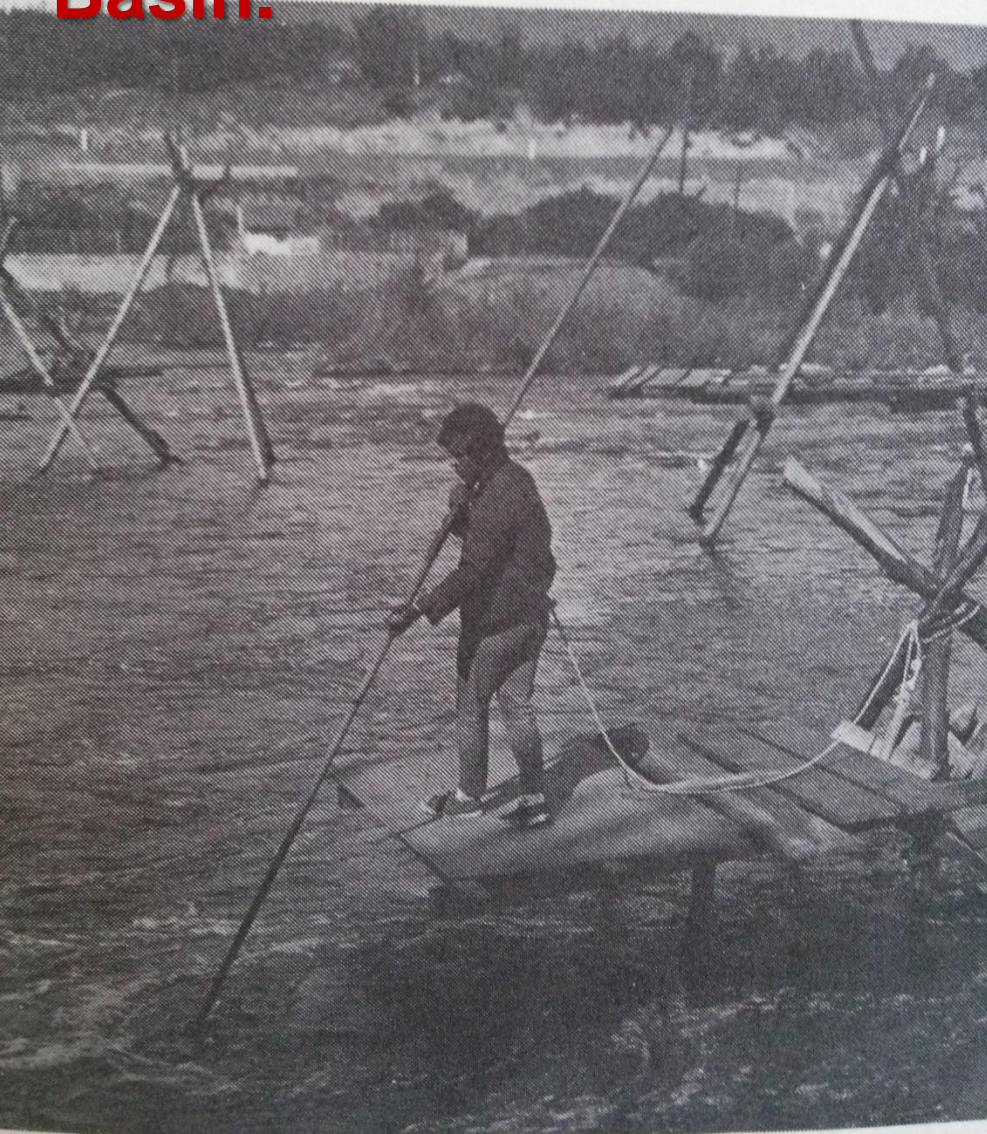
WDFW Wells Hatchery

USFWS Fish Health.

BPA

Fall Chinook/Coho: Gene Sutterlict Jr., Brady Carl, Joe Jay Pinkham III, Quincy Wallahee and Denny Nagle, Nate Pinkham and Conan Northwind for the daily field activities.

**The vision of the Yakama Nation is to bring back
all species previously present in the Yakama
Basin.**





Yakima River Fall Chinook Historical

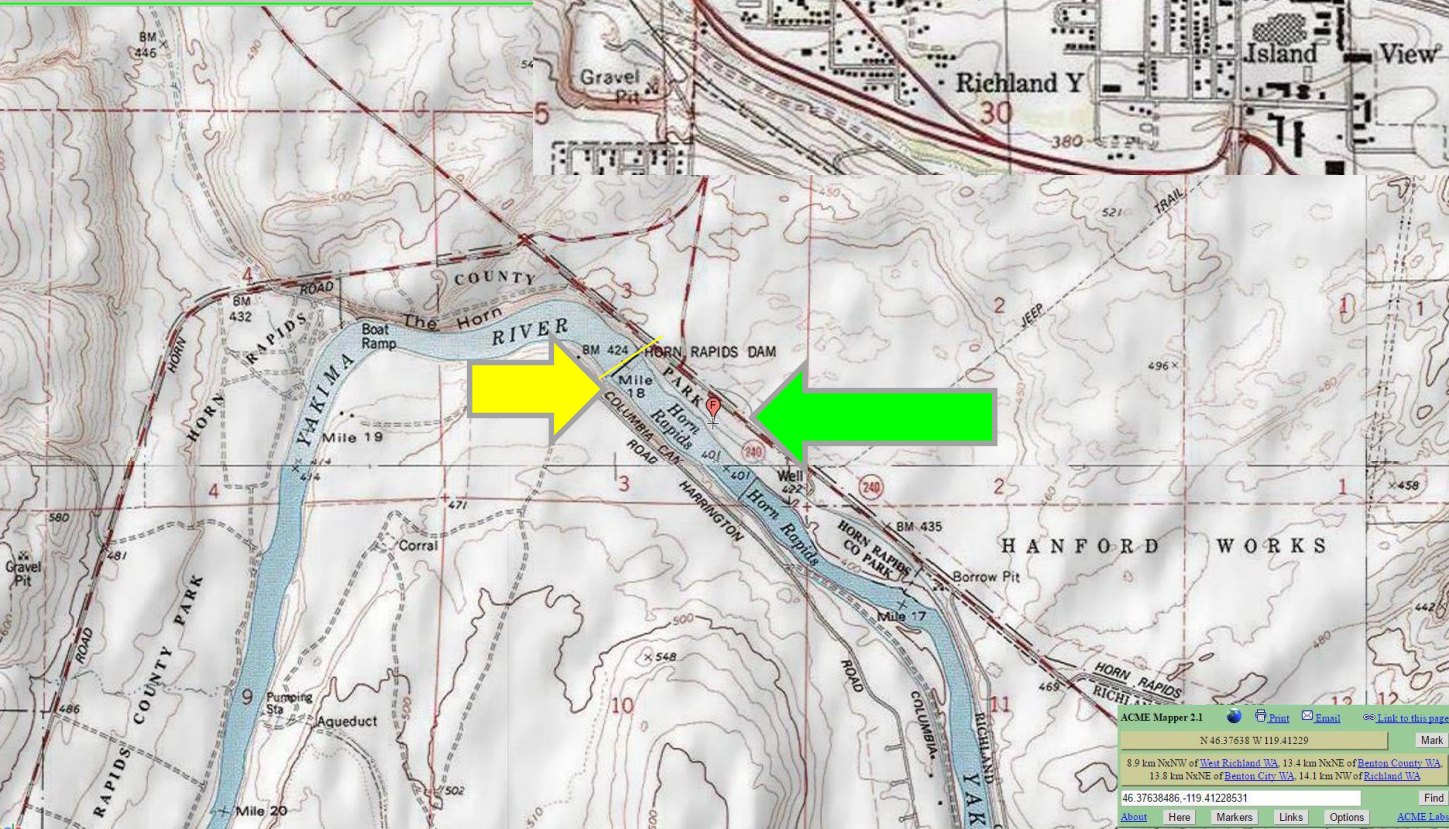
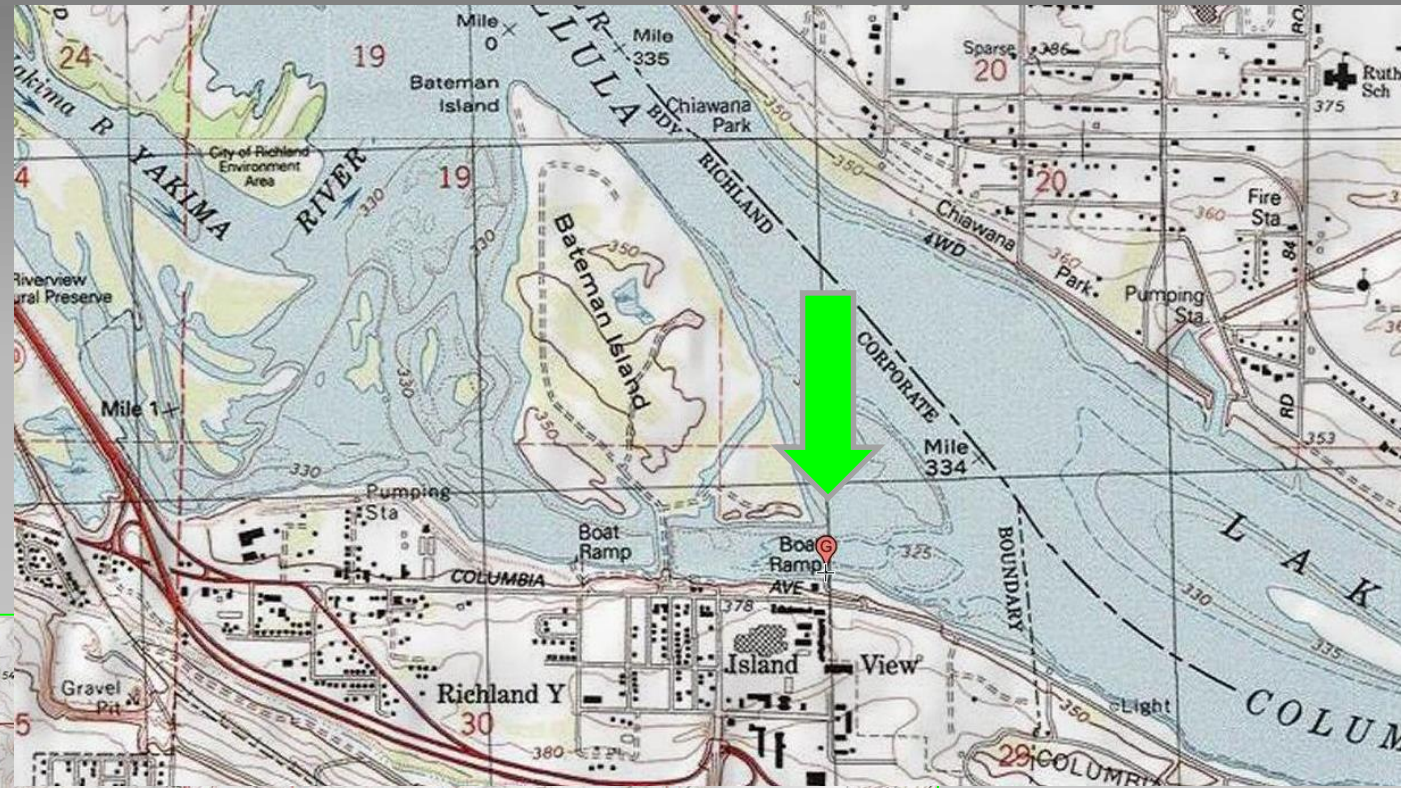
- Historically ~132,000 adults returned to spawn.
- Returns ranged 600 early 80s-2-3,000 mid-80s
- Restoration *through acclimation* began in 1994.
- Currently average about 3,822 since supplementation releases began in 1999.
- Summer Chinook *extirpated* early 1970s.
Reintroduction effort began in 2008.
- 1st Summer Adult Returns in 2011

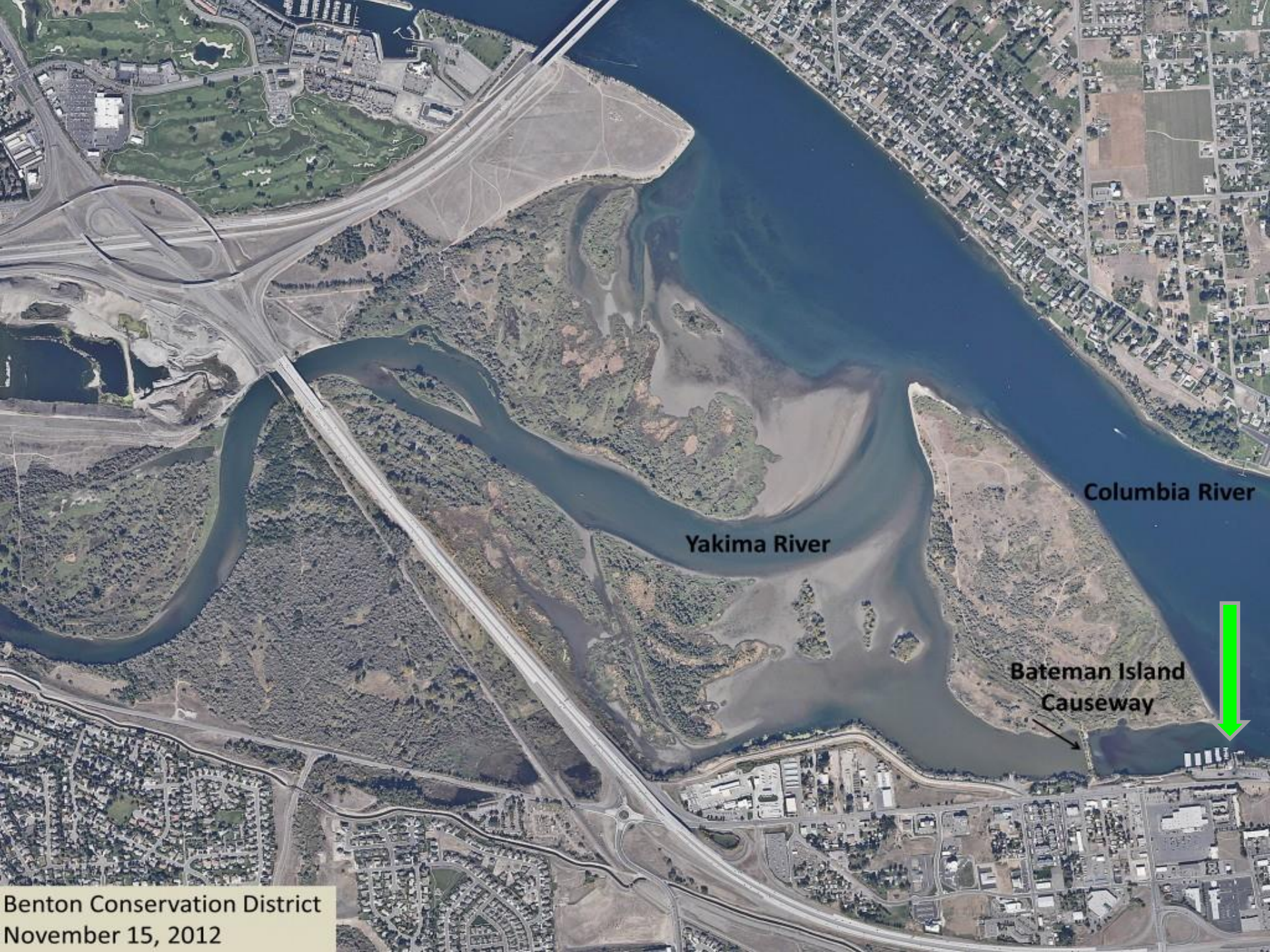
Yakima River Releases 2010-16

Released	LWH	PRH	PROsub	PROyear	Marion	TOTAL
2012	1,200,000	405,000	269,633	19,432	72,258	1,966,323
2013	1,506,725		184,949	22,735		1,714,409
2014	1,542,702	379,970	445,347			2,368,019
2015	1,653,495	479,078	584,397			2,716,970
2016	1,700,000		542,472			2,242,472

2008-2015 Smolt Survival to McNary of PIT-tagged Subyearling Fall Chinook

Release Year	Measure	Yearling Prosser	Subyearling Prosser						
2009	Tagging-to-McNary Survival	72.4%	26.8%						
	Number Tagged	7,516	7,565						
2010	Tagging-to-McNary Survival	60.6%	22.8%						
	Number Tagged	12,167	13,685						
2011	Tagging-to-McNary Survival	59.2%	16.0%						
	Number Tagged	22,754	22,790						
2012	Tagging-to-McNary Survival	65.6%	27.9%						
	Number Tagged	19,435	19,634						
2013	Tagging-to-McNary Survival	55.7%	40.0%						
	Number Tagged	13,685	22,966						
2014	Tagging-to-McNary Survival		23.7%						
	Number Tagged		4,025						
	Release Site		Prosser		Wanawish		Yakima River Mouth		
2015	Stock		Yakima		Priest Rapids	Yakima		Yakima	
	Release Group		Early	Late	Early	Early	Late	Early	Late
	Release Date - Replication 1		05/06/15	06/02/15	05/06/15	05/29/15	06/02/15	05/29/15	06/02/15
	Release Date - Replication 1		05/08/15	06/02/15	05/08/15				
	Tagging-to-McNary Survival		7.31%	4.94%	7.10%	7.10%	0.00%	39.87%	7.56%
	Number Tagged		4,021	14,156	4,018	4,044	2,004	1,668	1,018
	Pooled Tagging-to-McNary Survival		5.5%		7.1%	7.1%		27.6%	
	Pooled Number Tagged		18,177		4,018	4,044		2,686	





Columbia River

Yakima River

**Bateman Island
Causeway**

**Benton Conservation District
November 15, 2012**

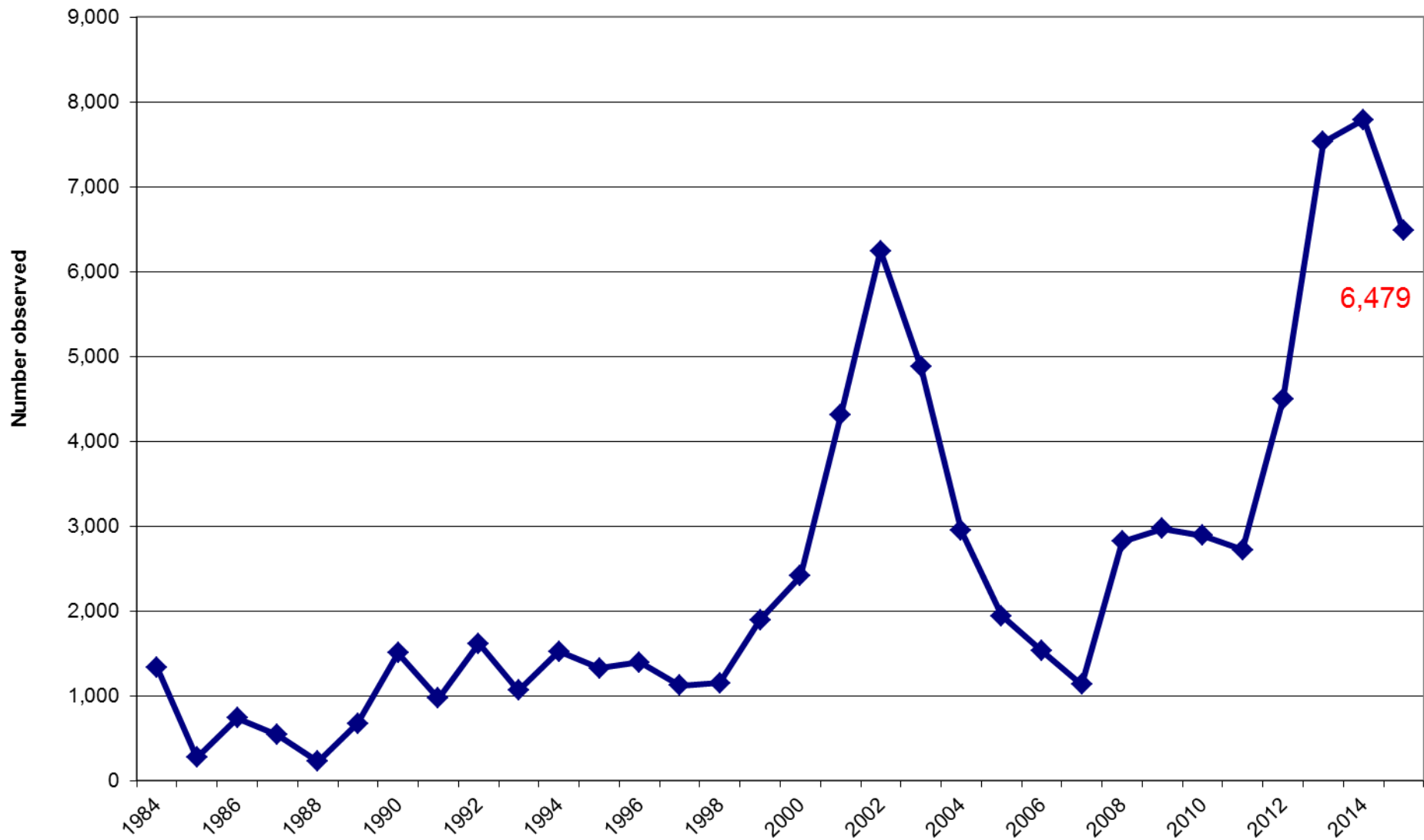
Releases 5/29/15 and 6/2/16

- 39% wow and 4 days later 7.5% at the Mouth
- Similar survival for both the early Prosser and Wannawish releases at 7.3% and 7.1%
Then 4 days later 4.9% and 0% respectively.

The 39% Question

What was going the day of the release?

Fall Chinook Adult Passage above Prosser Dam



2015 Redd Surveys above Prosser

6,479 Adults over Prosser Dam

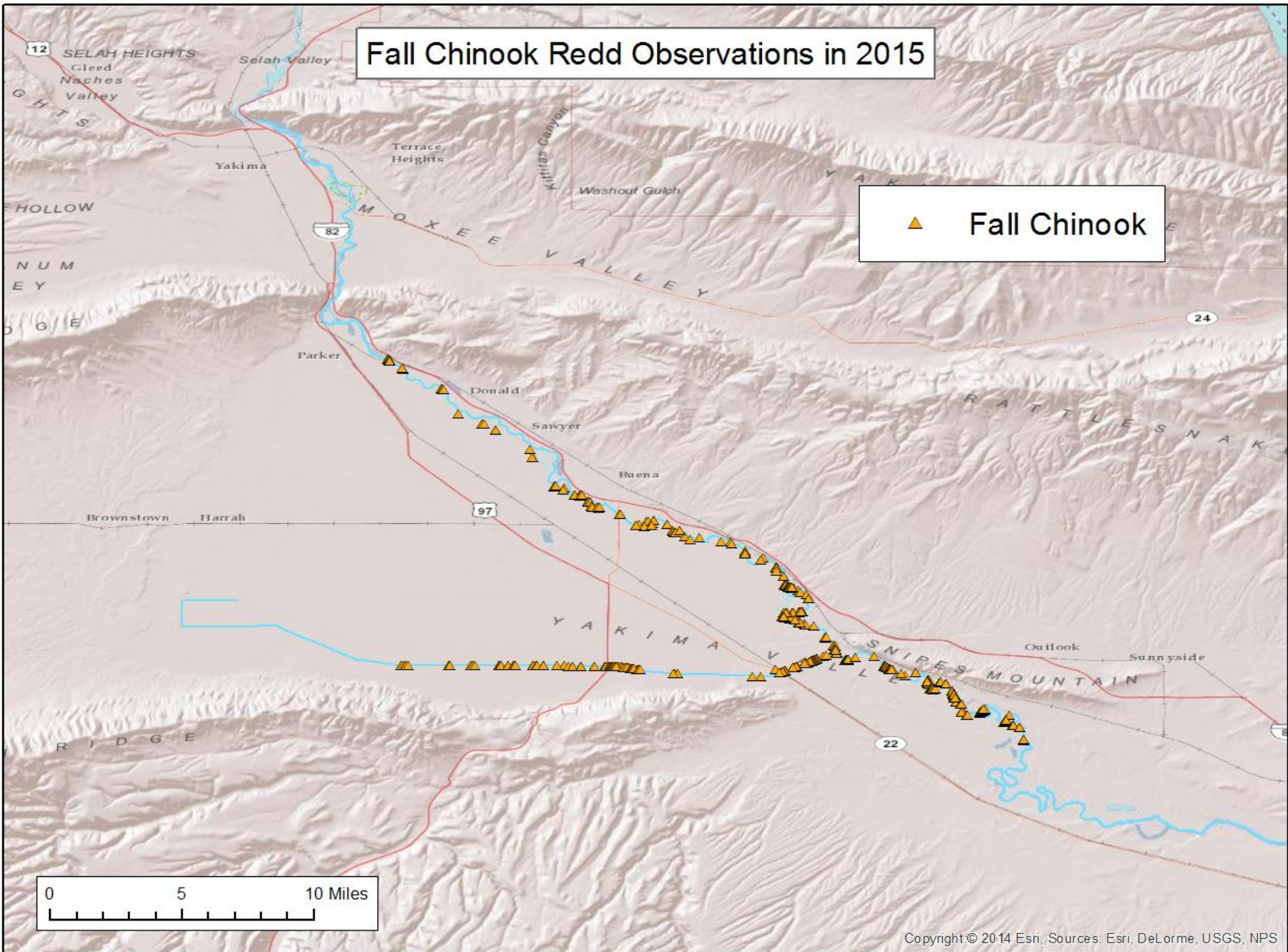
Yakima River- 1,194 Redds

Naches River- 0 Redds



Fall Chinook Redd Observations in 2015

▲ Fall Chinook



Marion Drain Redds 2001-2015

since 2001, avg 66 redds

160



2002 2003 2004 2005 2006 2007 2008 2009 2010 2011 2012 2013 2014 2015

8:07:14 PM

Re-Establishing Summer Chinook in the Yakima River

- **Objective:** To initiate investigation of the feasibility of establishing an early-run fall Chinook population in the Yakima River, with the goals being to:
 - Develop a naturally spawning adult population in the Yakima River between Sunnyside Dam and Roza Dam, and in the lower Naches River from the mouth to the Tieton River, and,
 - Increase the number of natural-origin returning summer-run adults in the lower Columbia, Zone 6, and the lower Yakima River contributing to harvest augmentation for both the tribal and sports fishery.

First Collection

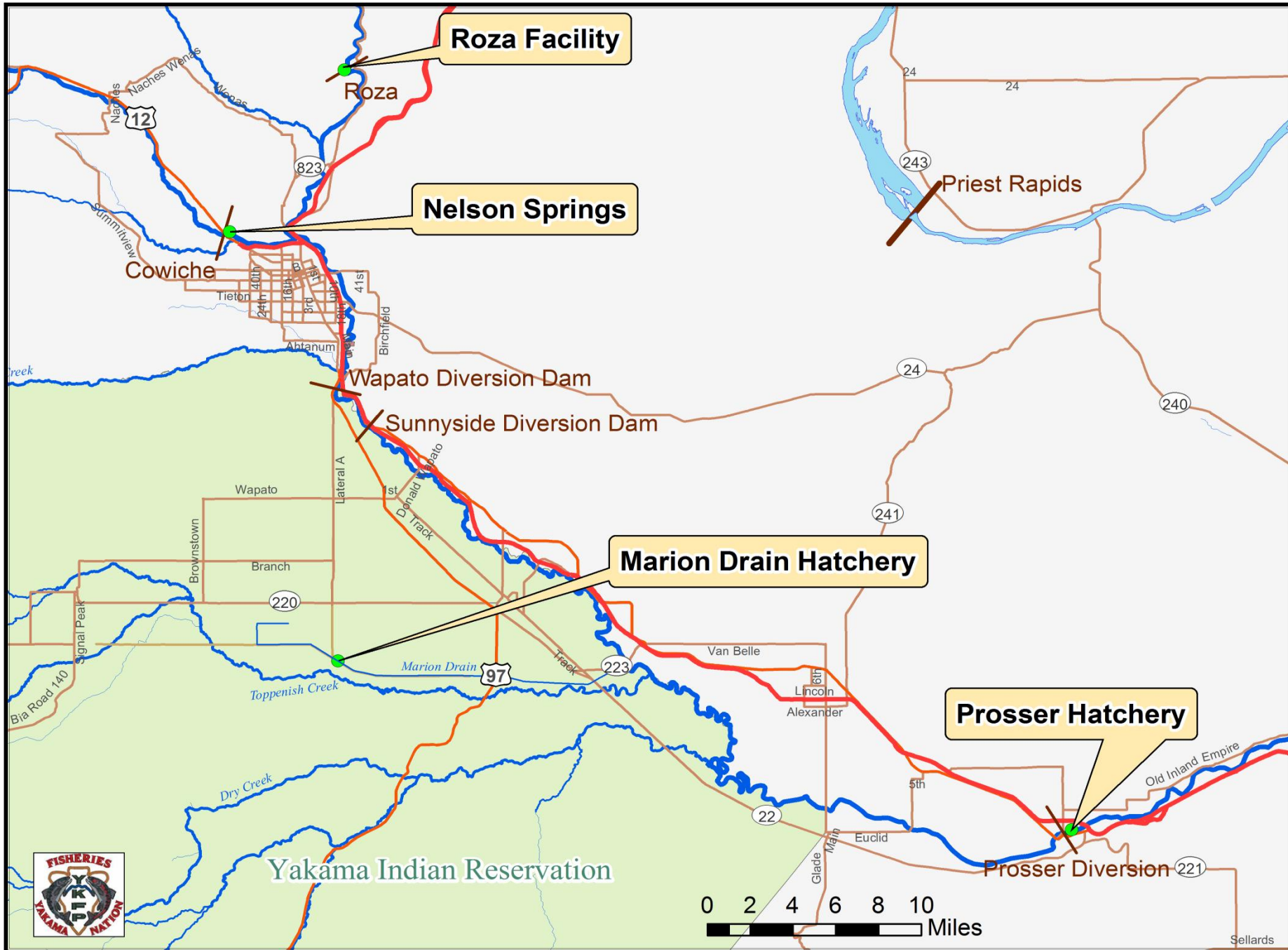
- Collected our first brood at the WDFW Wells Hatchery in 2008
- Have continued to release a goal of up to 250,000 annually

WDFW Wells Hatchery



YN Marion Drain Hatchery







Hooray!

FIRST to return over Prosser on 7/16/11.

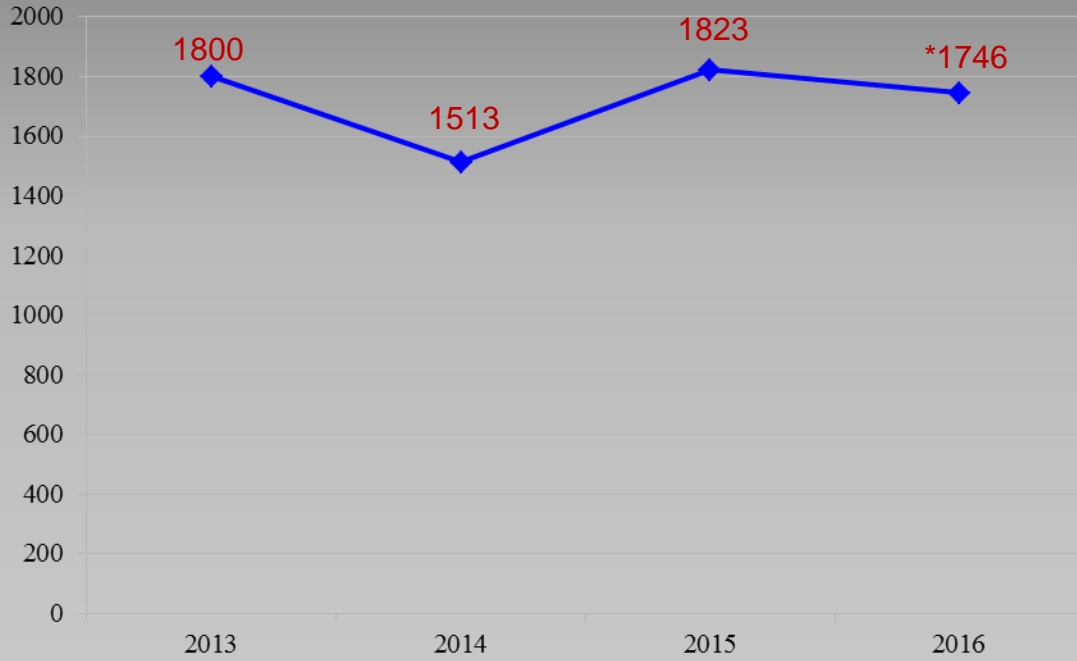
*Feels good
to be
back!!*

MOTION POST-ALARM

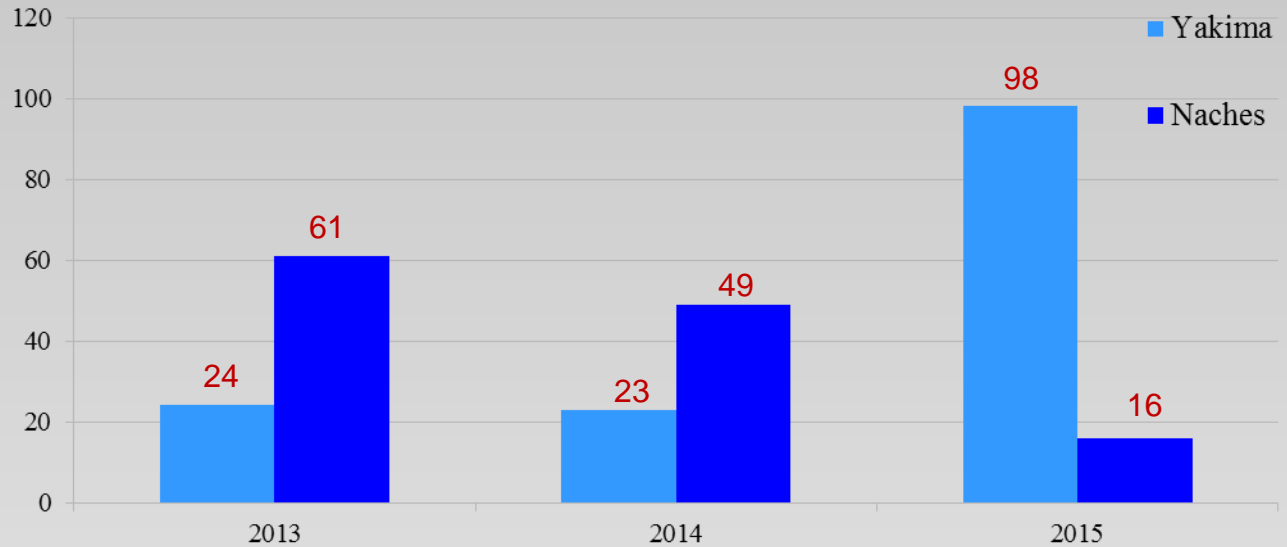


*BY2008 Stiles release observed
at Prosser 7/16/11*

Adult Returns over Prosser 2013-*16



Redd Counts 2013-15



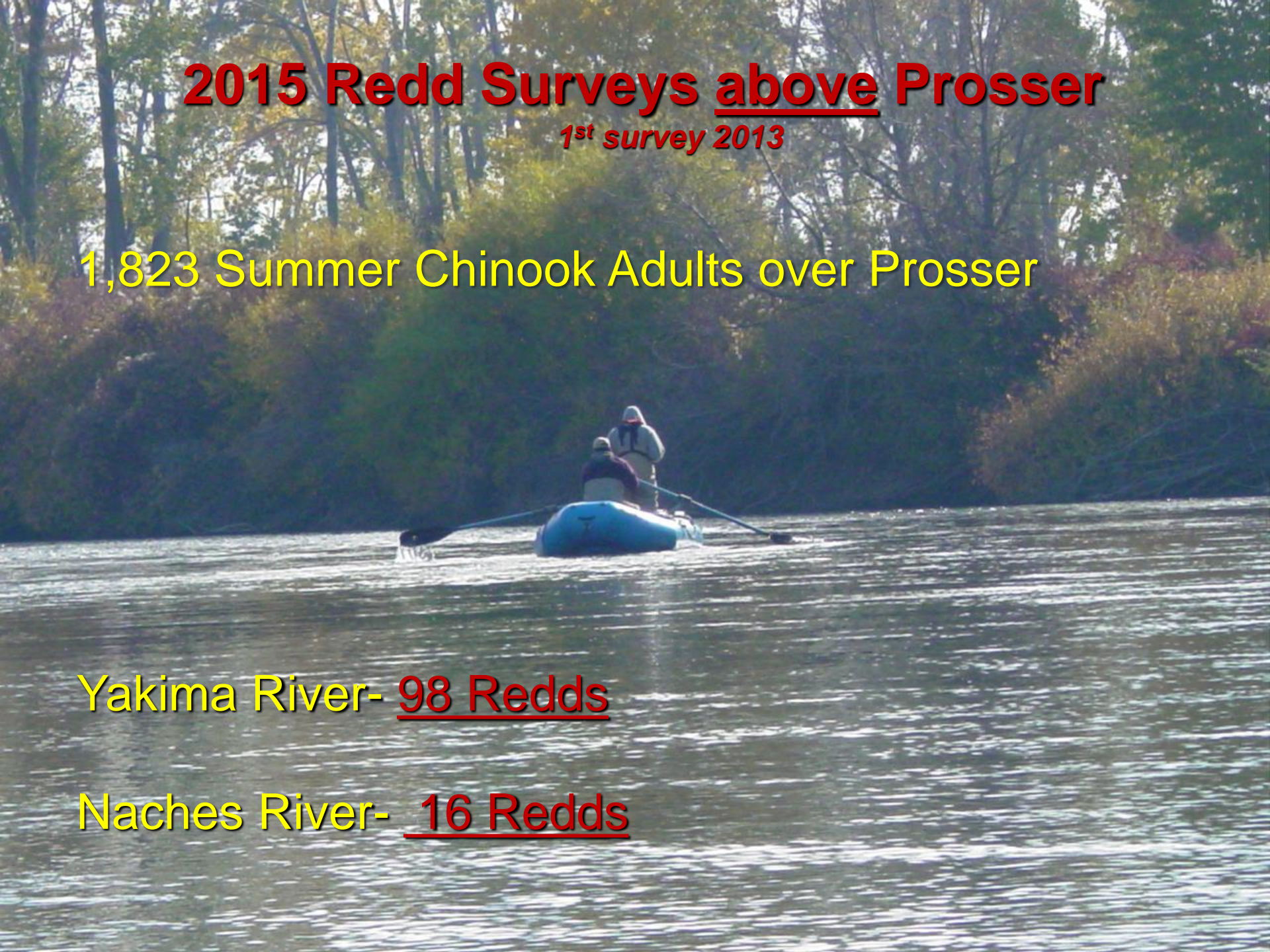
2015 Redd Surveys above Prosser

1st survey 2013

1,823 Summer Chinook Adults over Prosser

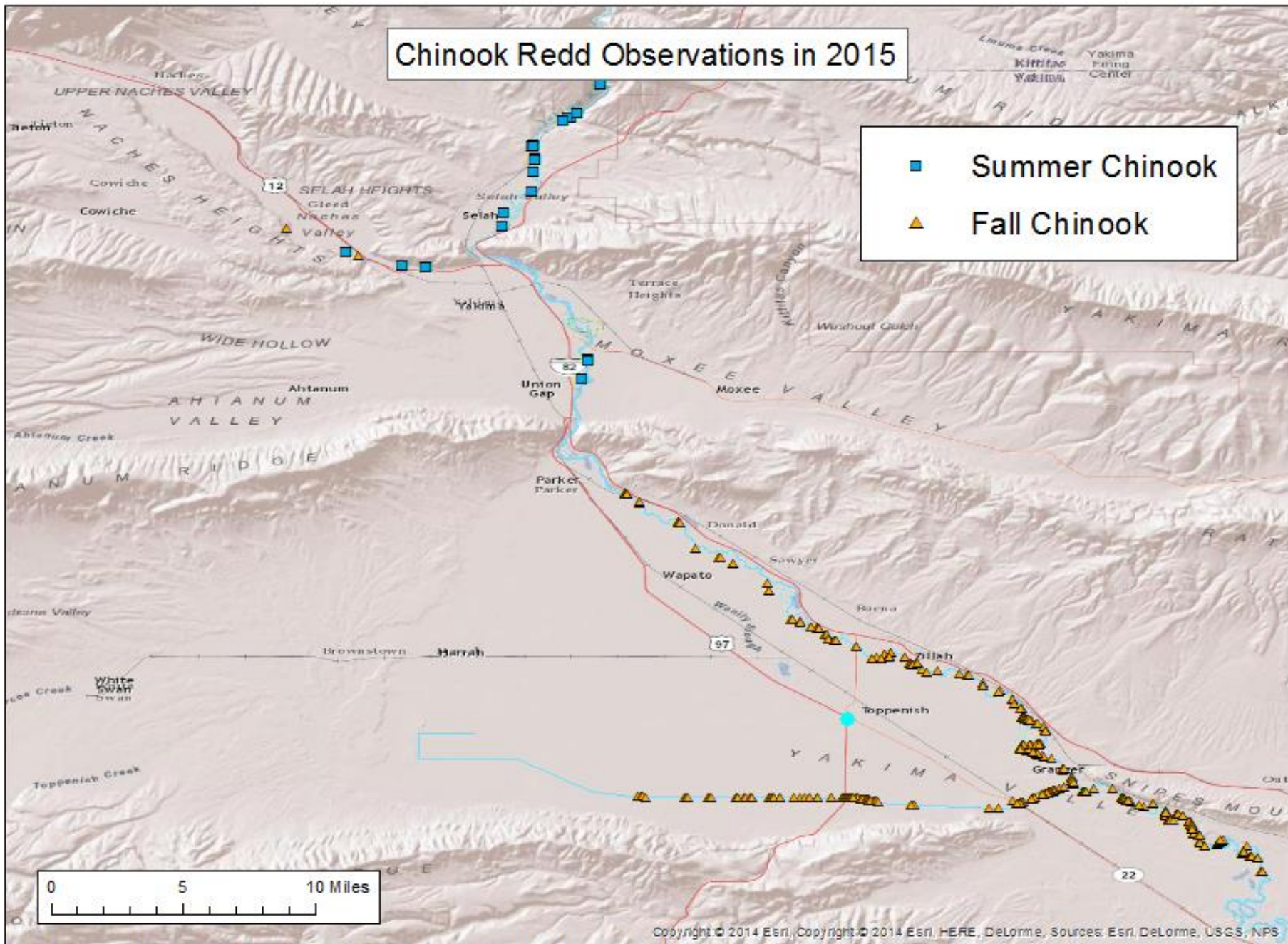
Yakima River- 98 Redds

Naches River- 16 Redds

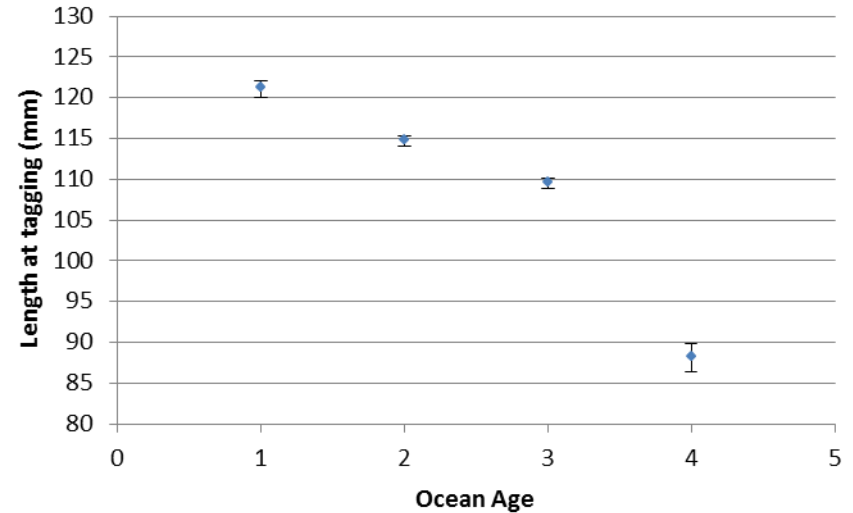
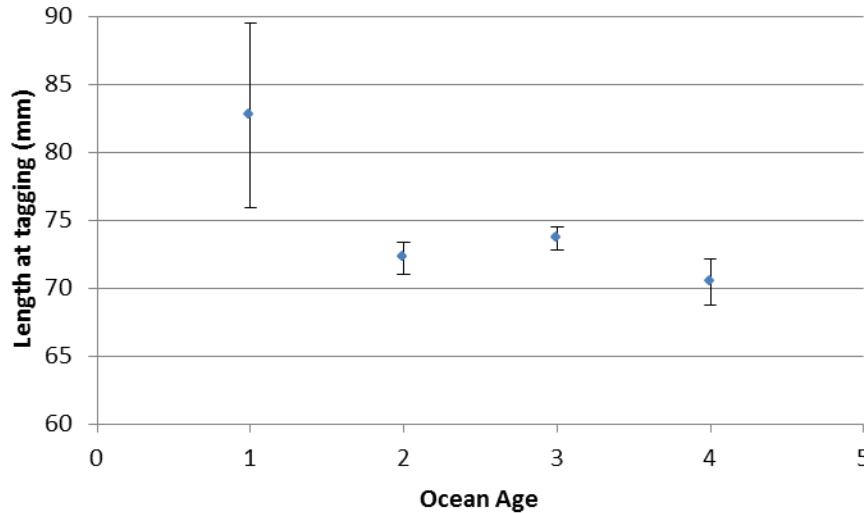
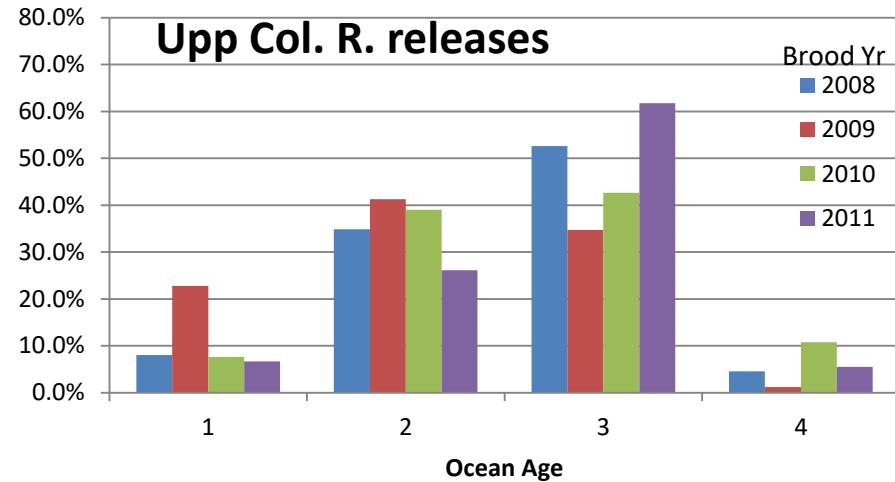
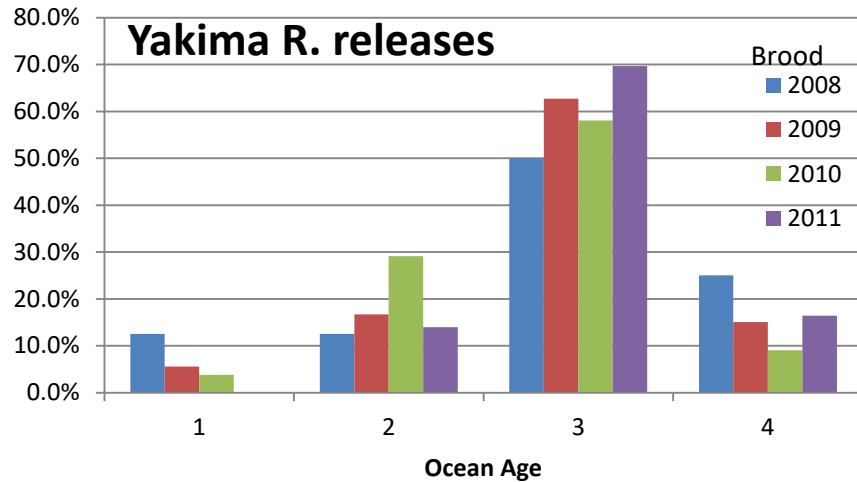


Chinook Redd Observations in 2015

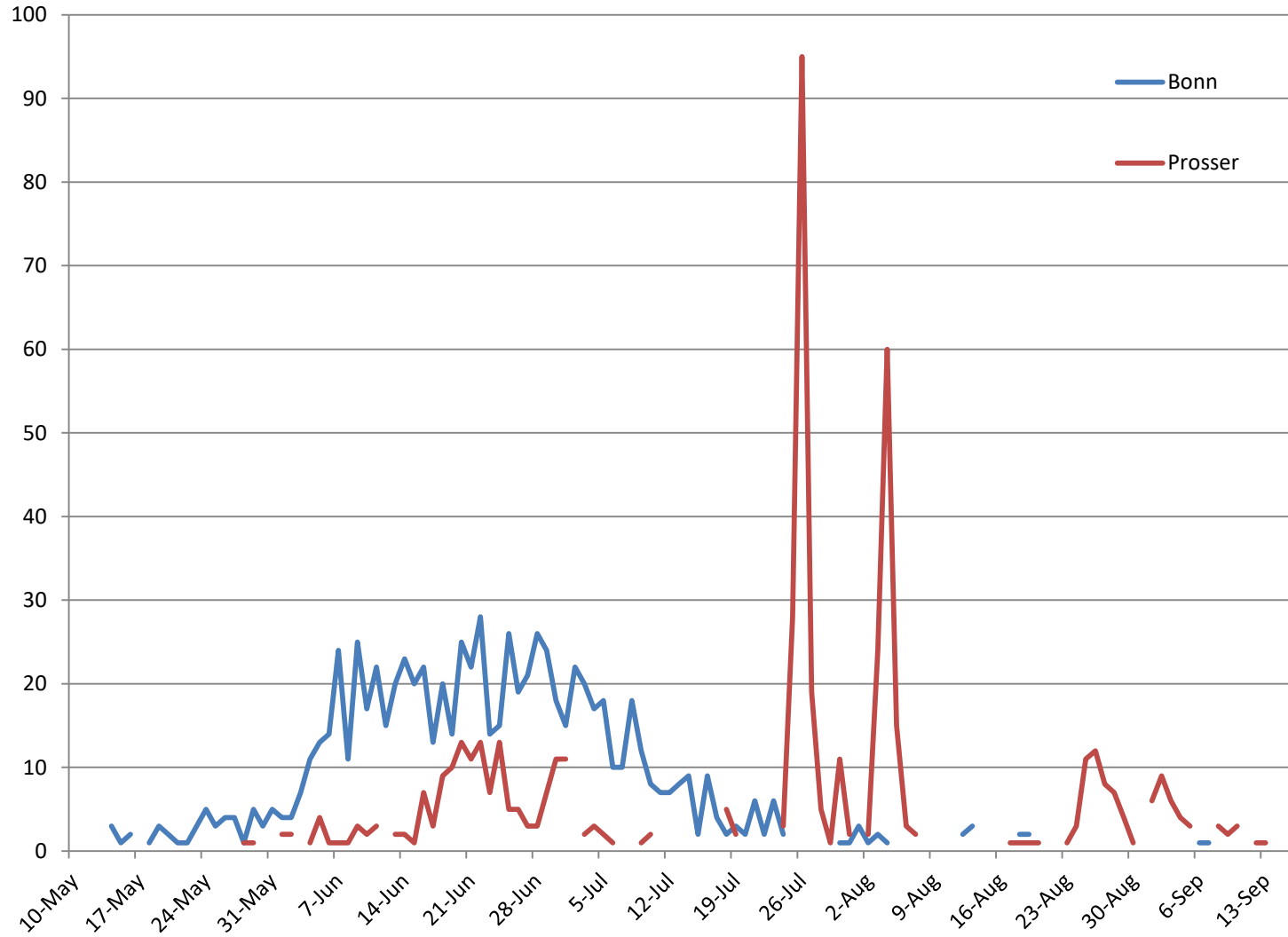
- Summer Chinook
- ▲ Fall Chinook



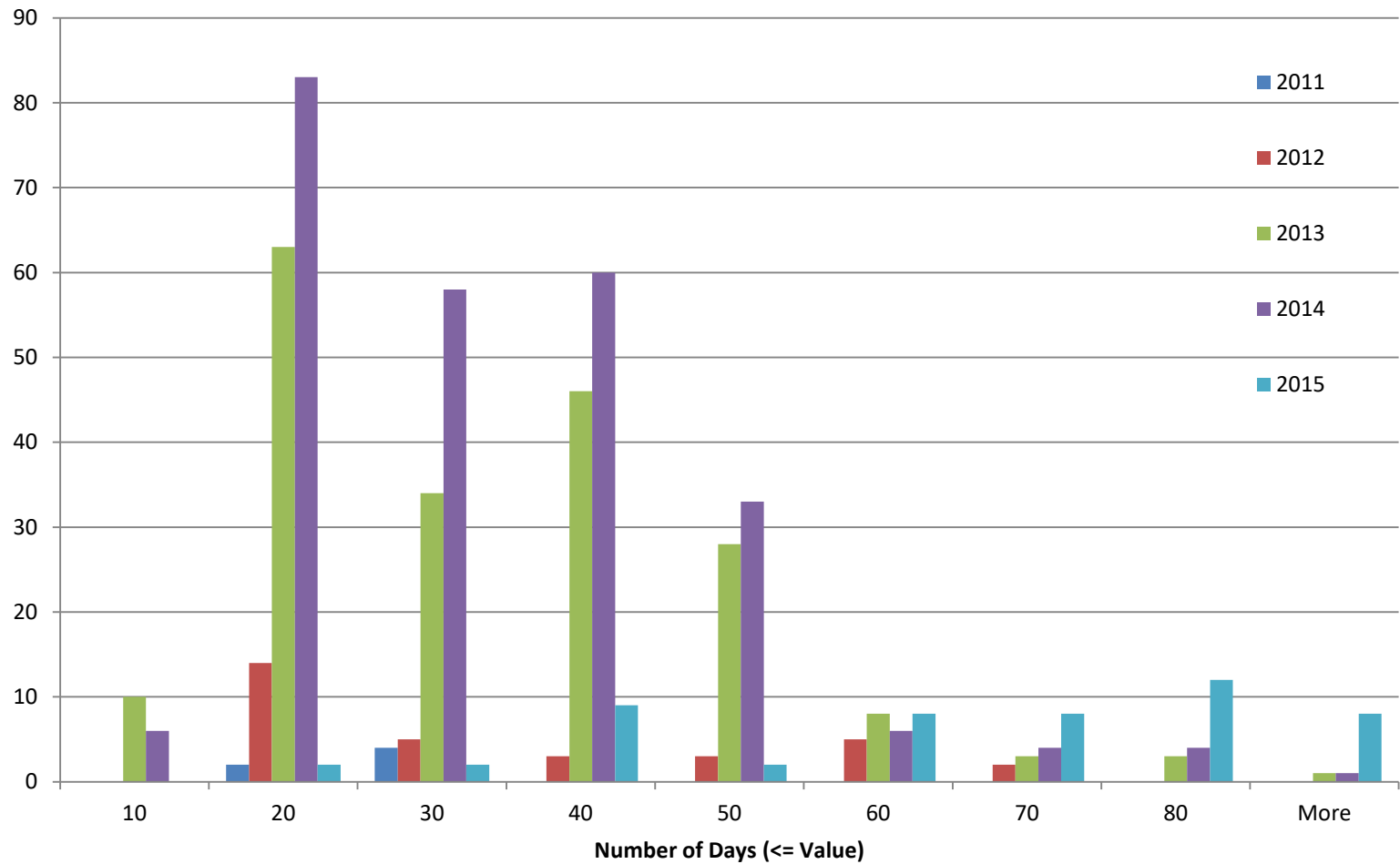
Comparison of Yakima and Upper Columbia SuCh Age Composition based on PIT returns to Bonneville Dam



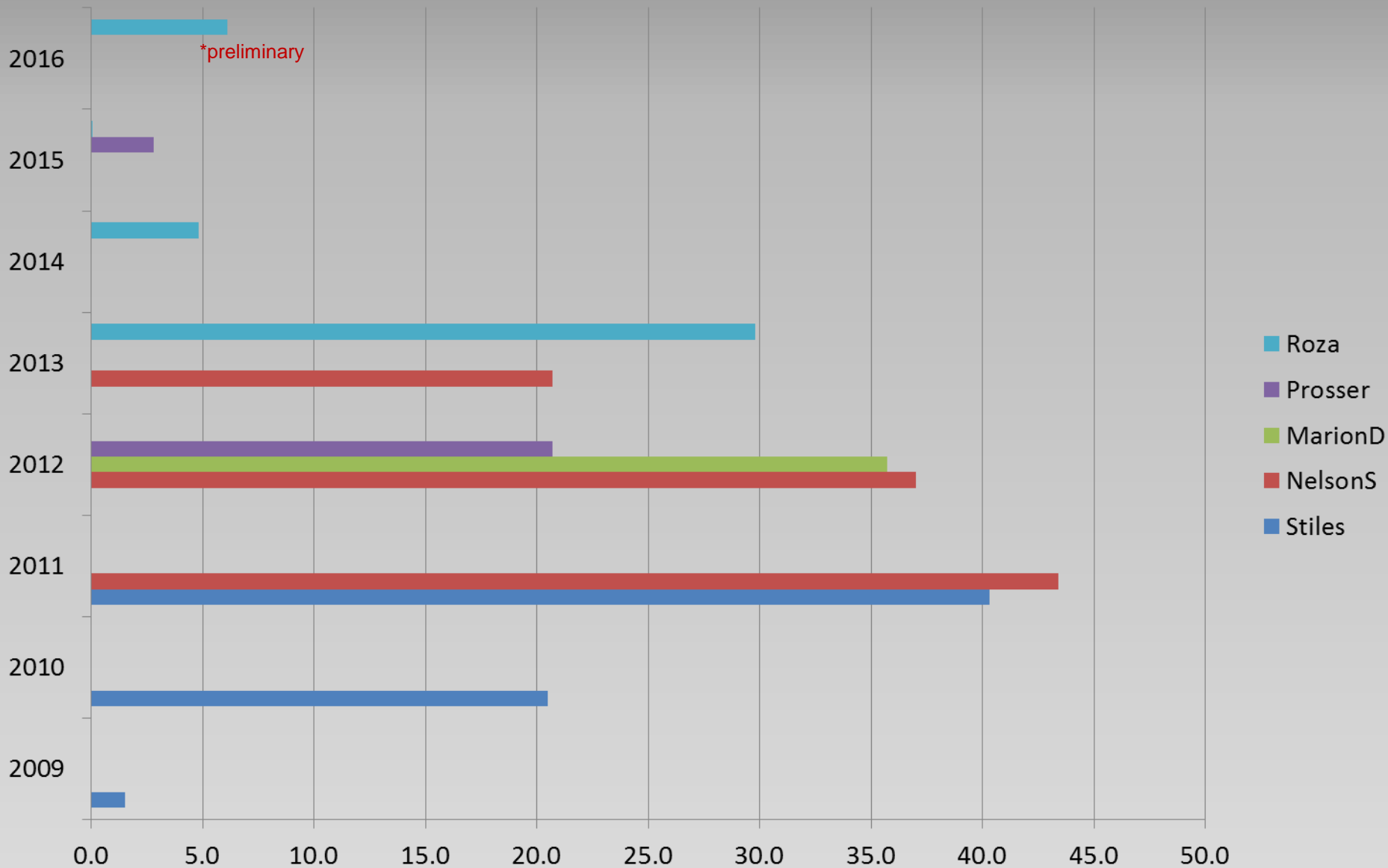
Summer Chinook PIT-Based Run Timing at Bonneville and Prosser Dams



Summer Chinook Adult PIT-Based Travel Times from Bonneville to Prosser Dams



% Survival to McNary



2016-16 Plans on-going

- Bring in green eggs/milt from Wells Hatchery (MarionD); Final acclimation and release at Nelson and Roza sites.
- Continue In-basin Subyearling releases at Prosser
- Repeat releases below Wannawish and at the Mouth
- Redd Surveys on the Yakima River between Prosser and Roza Dams and lower Naches River.

[Prosser DVR]CH03-CH3 6/1/2013 1:15:49 PM

Su 6/1/13 1:15pm



MOTION POST-ALARM

SU 5/28/14 1:56:27pm
Eastbank Stiles 5/16/11 BY09



C03[0]5/28/14 1:56:27 PM

Questions or Comments?

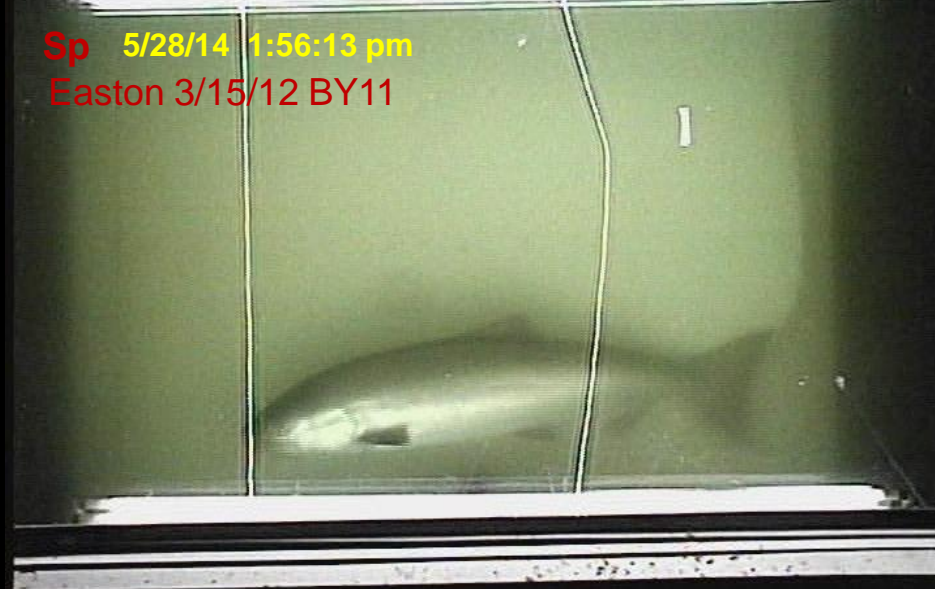
[Prosser DVR]CH03-CH3 6/1/2013 1:24:49 PM

Sp 6/1/13 1:24pm



MOTION POST-ALARM

Sp 5/28/14 1:56:13 pm
Easton 3/15/12 BY11



C03[0]5/28/2014 1:56:13 PM