

Restoring Klickitat River Floodplain Connectivity

Collaboration, Management and Coordination

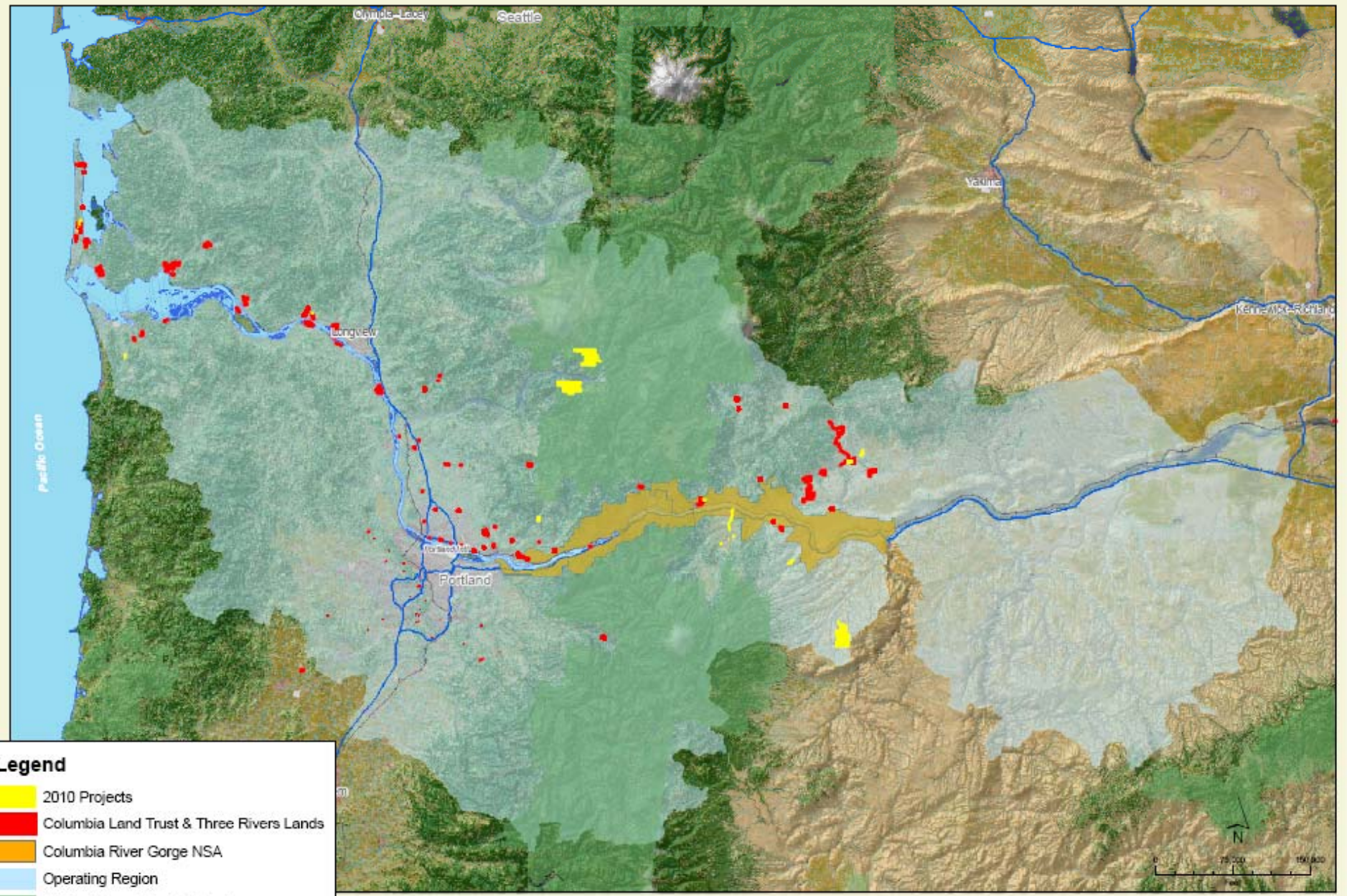
March 15, 2011



Mission:

*Conserve and care for vital lands, waters, and wildlife of the
Columbia River region.*







Critical habitat



Forests



Farms and Ranches



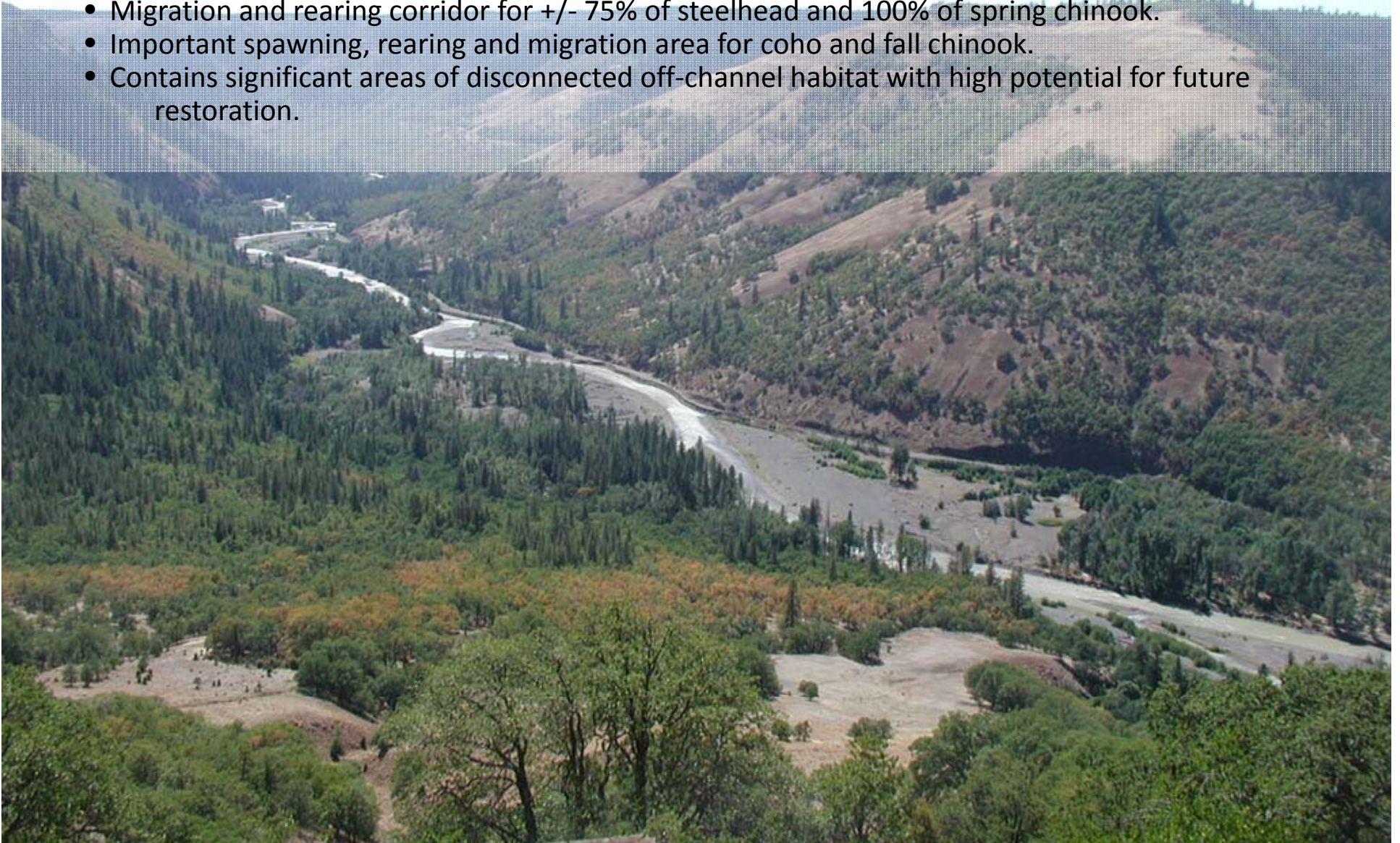
Nature close to home

Klickitat River Conservation Area



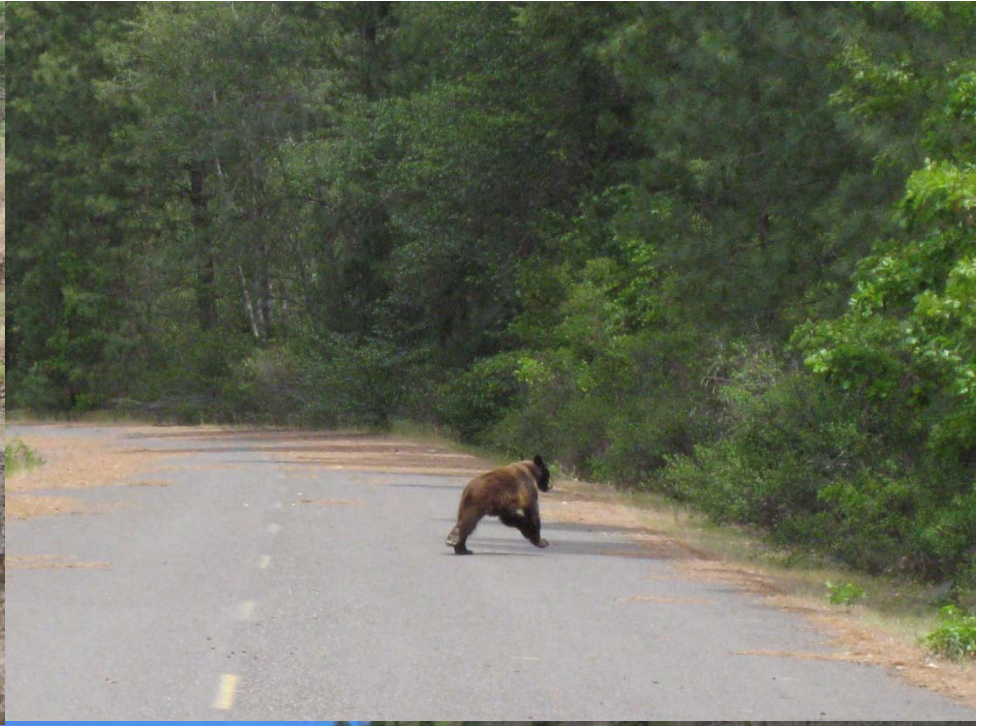
Resource Priority

- Ranked second highest priority of 21 priority areas within Lead Entity recovery plan
- Accounts for +/- 60% of observed mainstem steelhead spawning, for +/- 20% of basinwide spawning.
- Reach contains the greatest amount of mainstem channel complexity in lower river.
- Migration and rearing corridor for +/- 75% of steelhead and 100% of spring chinook.
- Important spawning, rearing and migration area for coho and fall chinook.
- Contains significant areas of disconnected off-channel habitat with high potential for future restoration.



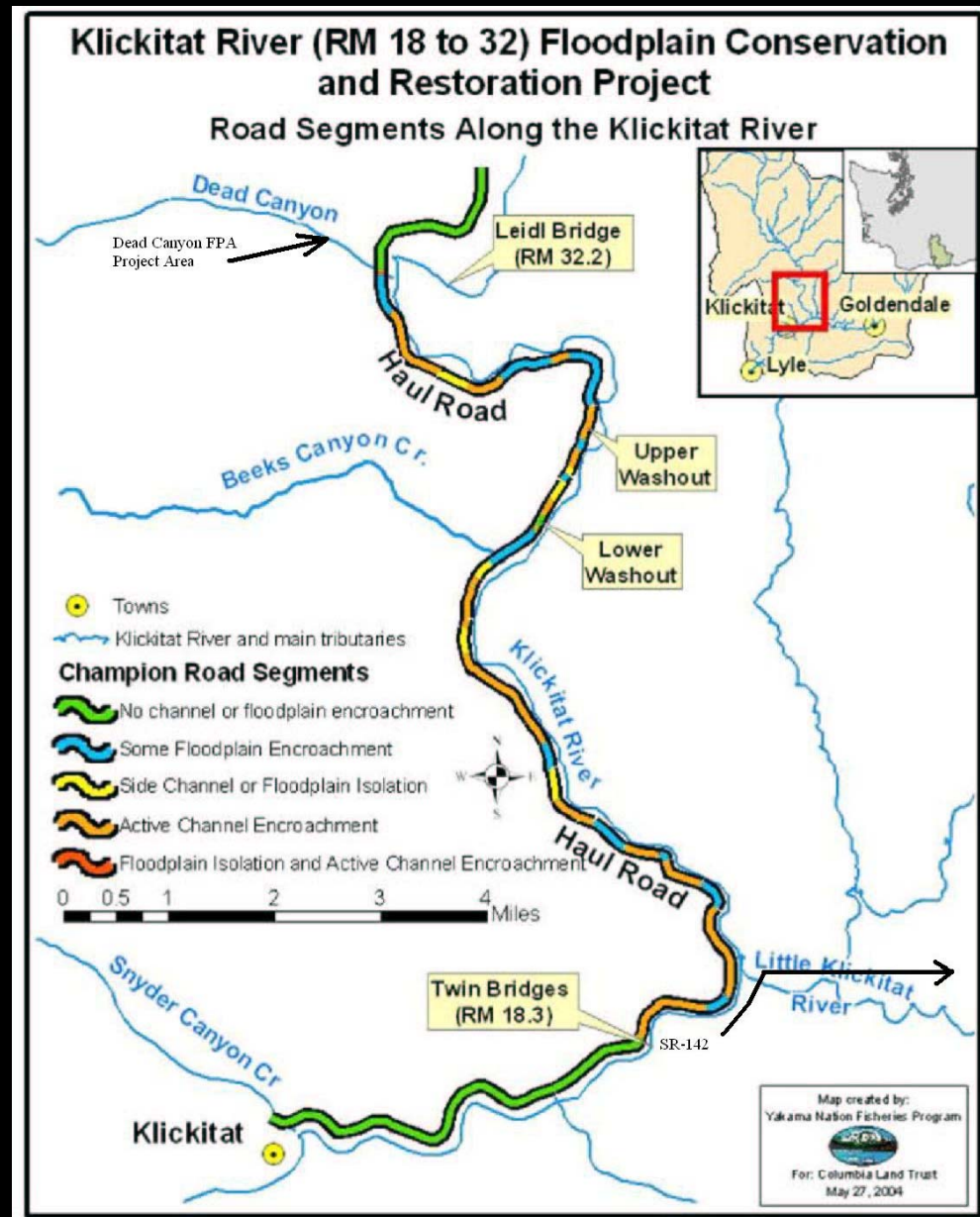






Project History

- 2004 SRFB Phase 1 for acquisition
- 2005 SRFB Phase 2 for restoration
- 2007 Purchased the property from Hancock Timber Resource Group
- 2007 Initiated active management of property – weed control, access, road maintenance, community outreach, etc.
- 2008 Began ecological prioritization, restoration design, restoration project outreach, and permitting
- 2009 Removed Dead Canyon Railroad trestle and fill
- 2010 Removed asphalt from 3.4 miles of road to recycle on nearby road project
- 2010 Road removal between two washouts
- 2011 Post-restoration monitoring, weed control, access management, community outreach, grant writing



Thank You

- Salmon Recovery Funding Board
- Klickitat County Lead Entity
- Yakama Nation Fisheries Program
- Bonneville Power Administration
- Hancock Timber Resource Group
- Mid-Columbia Fisheries Enhancement Group
- Klickitat County Commissioners
- Tom Arnold Logging
- Neighbors and local community
- Volunteers and Advisors

