

# Multi-Agency Land Management and Emergency Response: Cougar Creek Fire

Jessica Hudec

Gifford Pinchot National Forest

# Presentation Outline

- Tools for Agency Administrators- Wildland Fire Decision Support System (WFDSS)
- Incident Management Teams (IMTs)
- Post-fire assessments
- Future considerations

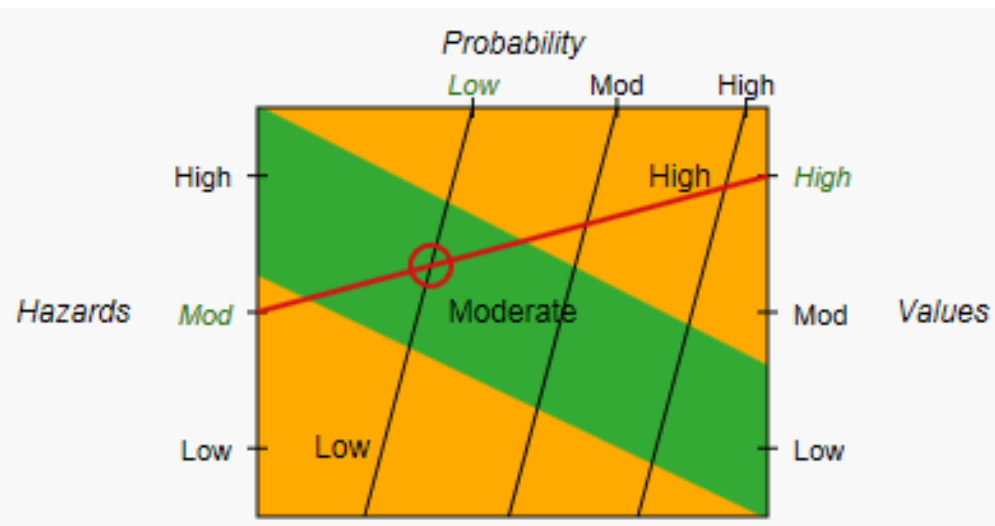




# Wildland Fire Decision Support System (WFDSS)

## Assess situation

- Relative risk- values, hazards, probability
- Organizational assessment- relative risk, implementation difficulty, socio/political concerns



# WFDSS

- Develop incident objectives and requirements
- Validate strategic objectives and management requirements

Inc Obj 08/12/2015 Yes **YAA:** Protect Cougar Creek Historic Structure.

Inc Obj 08/14/2015 Yes **GPNF:** Point source protection of Historic Gotchen Cabin.

Inc Obj 08/14/2015 Yes **GPNF:** Point source protection of Glacier Springs, drinking water source for the community of Trout Lake.

Inc Obj 08/12/2015 Yes **YAA:** Protect "Hell Roaring" Irrigation Ditch Infrastructure. It is the major water transport system for the Glenwood Valley.

Inc Obj 08/12/2015 Yes **DNR:** minimize acres burned to protect timber, grazing and habitat values on state and private lands.

Inc Obj 08/12/2015 Yes **YAA:** Protect grazing allotments.

Inc Obj 08/14/2015 Yes **GPNF:** Utilize MIST in Wild and Scenic River and Wild and Scenic eligible river corridors-  
White Salmon River and Cascade Creek.



# Values



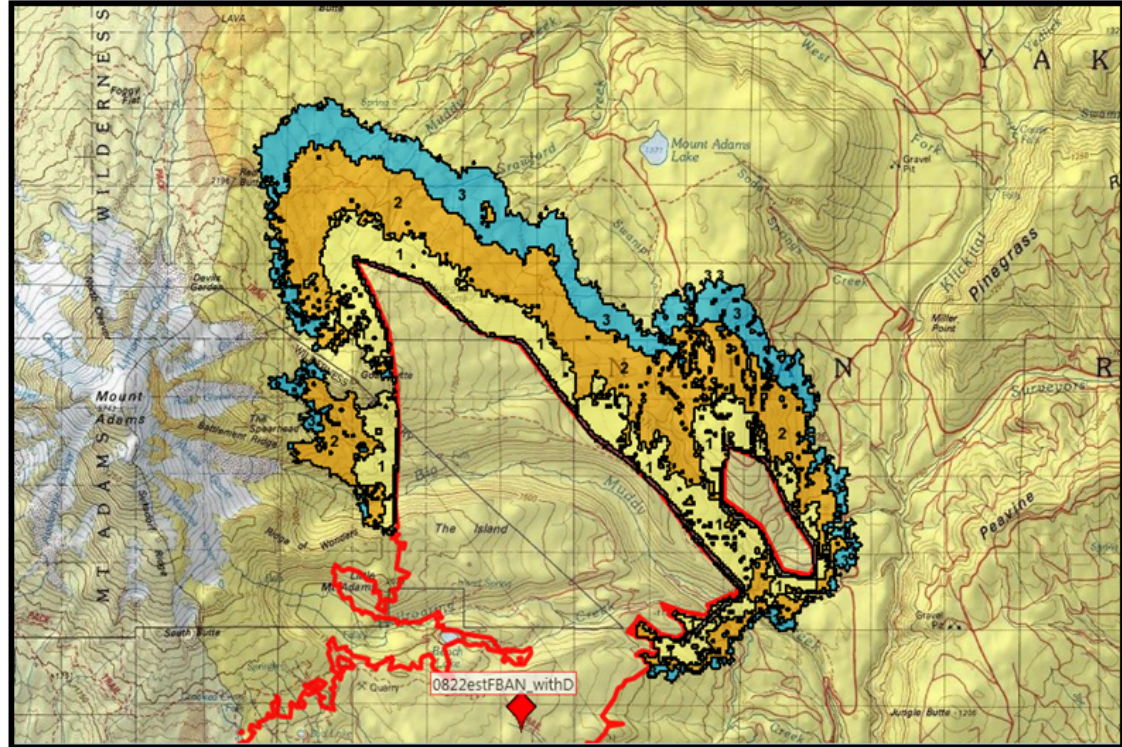




# WFDSS

- Develop a course of action
- Estimate cost
- Publish a multi-agency decision

FIRE GROWTH



These results represent a 3-day fire behavior analysis for Divisions X and Y. Terrain driven winds are expected to keep the fire channeling up drainages toward the mountain, but gusts from various directions can result in erratic spread. The model assumes no fire suppression and cannot model Haines index. The fire could reach Rd 255 to the east by Tuesday (burn period 3) and will continue north, crossing Crawford and Little Muddy Creeks and approaching Red Butte.



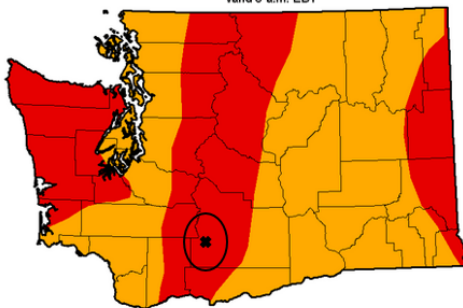
# Incident Management Teams (IMTs)

- Multiple agencies represented in standard team personnel
- Teams may or may not be local
- Roles of liaison, strategic operations planner (SOPL), and long term fire behavior analyst (LTAN)

## 6-10 Day Weather Outlooks

### U.S. Drought Monitor Washington

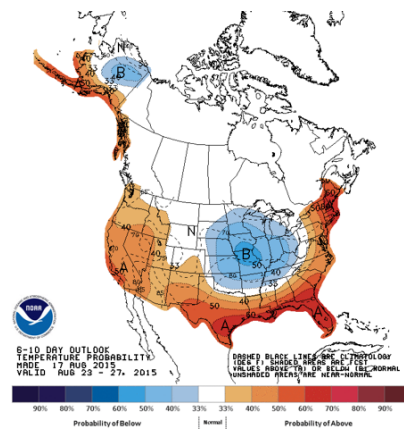
August 11, 2015  
(Released Thursday, Aug. 13, 2015)  
Valid 8 a.m. EDT



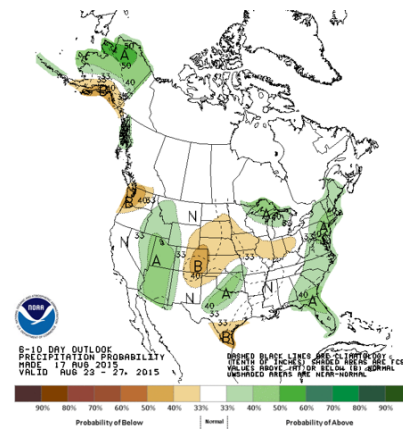
#### Intensity



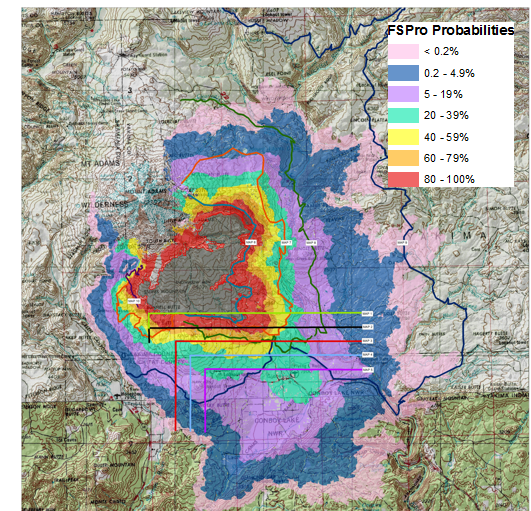
### Temperature



### Precipitation



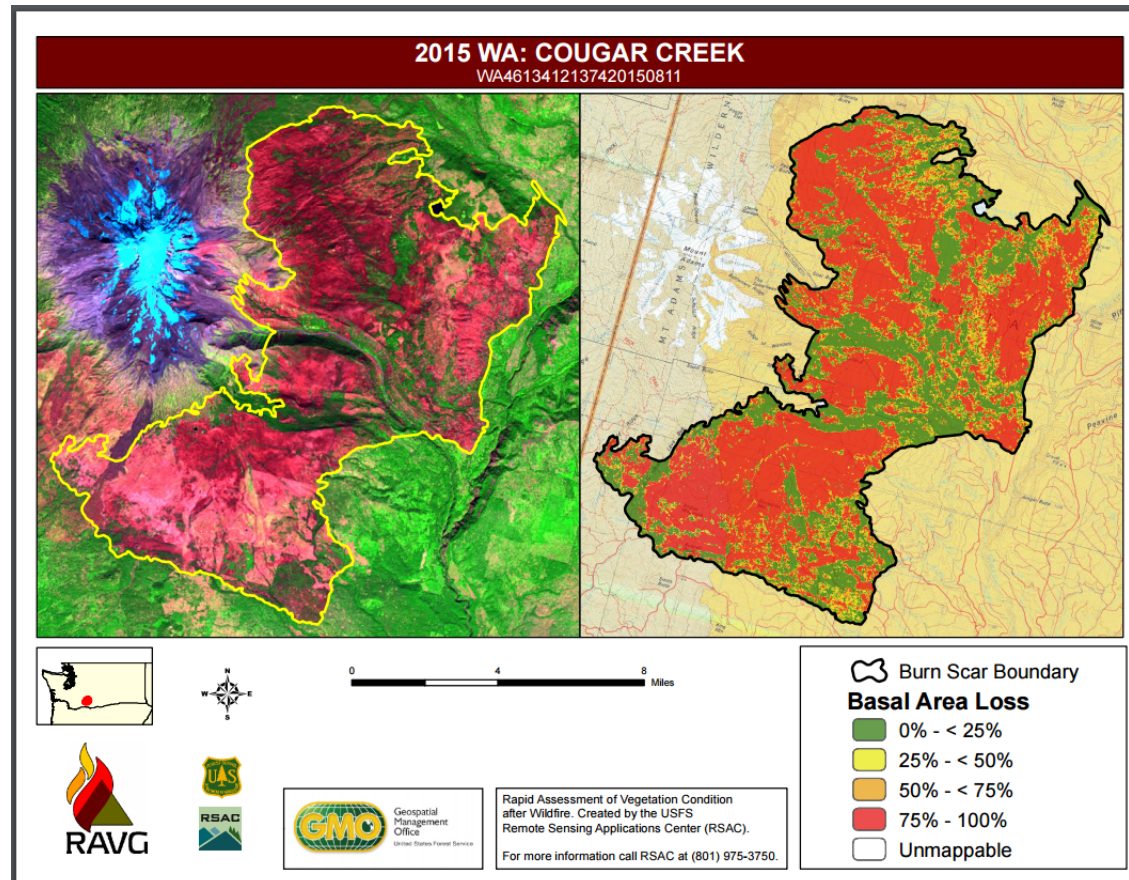
### Long Term- FSPro





# Post-Fire Assessments

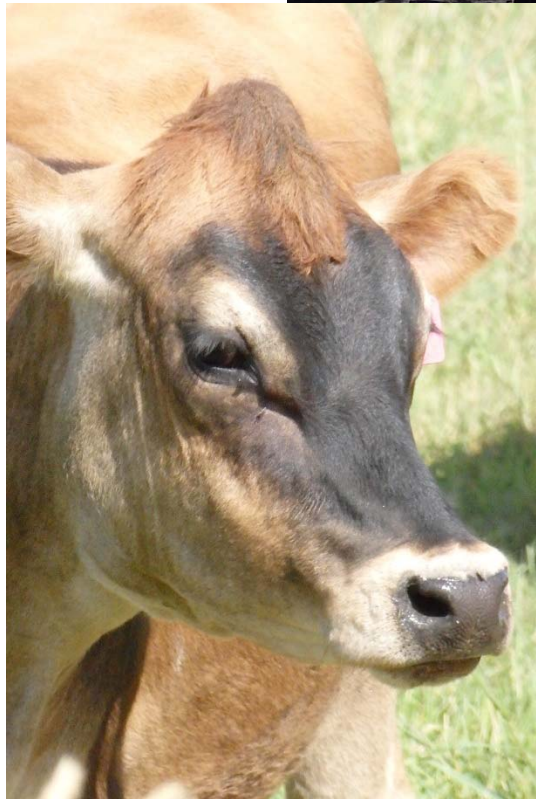
- Burned Area Emergency Response (BAER)
- Rapid Assessment of Vegetation (RAVG)
- Changed condition assessment

















July 4, 2013



July 30, 2013





Mt. Adams Large Fires  
2001-2015

# Future Considerations

- Salvage
- Restoration-seeding, planting, etc.
- Planning for cross-boundary forest management
- Pre-suppression planning for cross-boundary emergency response



Sources: Esri, DigitalGlobe, GeoEye, Earthstar Geographics, CNES/Airbus DS, Imagery, AeroGRID, IGN, IGP, swisstopo, and the GIS User Community



Questions?

