

Yakima Tributary Access & Habitat Program

PRESENTED BY CASSANDRA WEEKES

WASHINGTON DEPARTMENT OF FISH & WILDLIFE

YTAHP



**Open membership;
meets every month**



**Provide fish passage at
man-made barriers**



**Screen Surface
Water Diversions**



**Enhance instream and
riparian habitat and
function**

Importance of YTAHP

- **Voluntary, incentive based program targeted to landowners and land managers on Yakima Basin tributaries**
- **Educates landowners about state laws, screening and passage requirements, sources of financial and technical assistance, and encourages cooperative compliance**
- **Collaborative Process**
 - **Core Team**
 - **Technical Work Group**
- **Restores miles of valuable tributary rearing habitat for juvenile salmonids**
- **Integrates with other existing programs that benefit fish habitat, water quality, instream flow, etc. to leverage project benefits**



North Yakima Conservation District



Kittitas County Conservation District



Washington Department of **FISH and WILDLIFE**



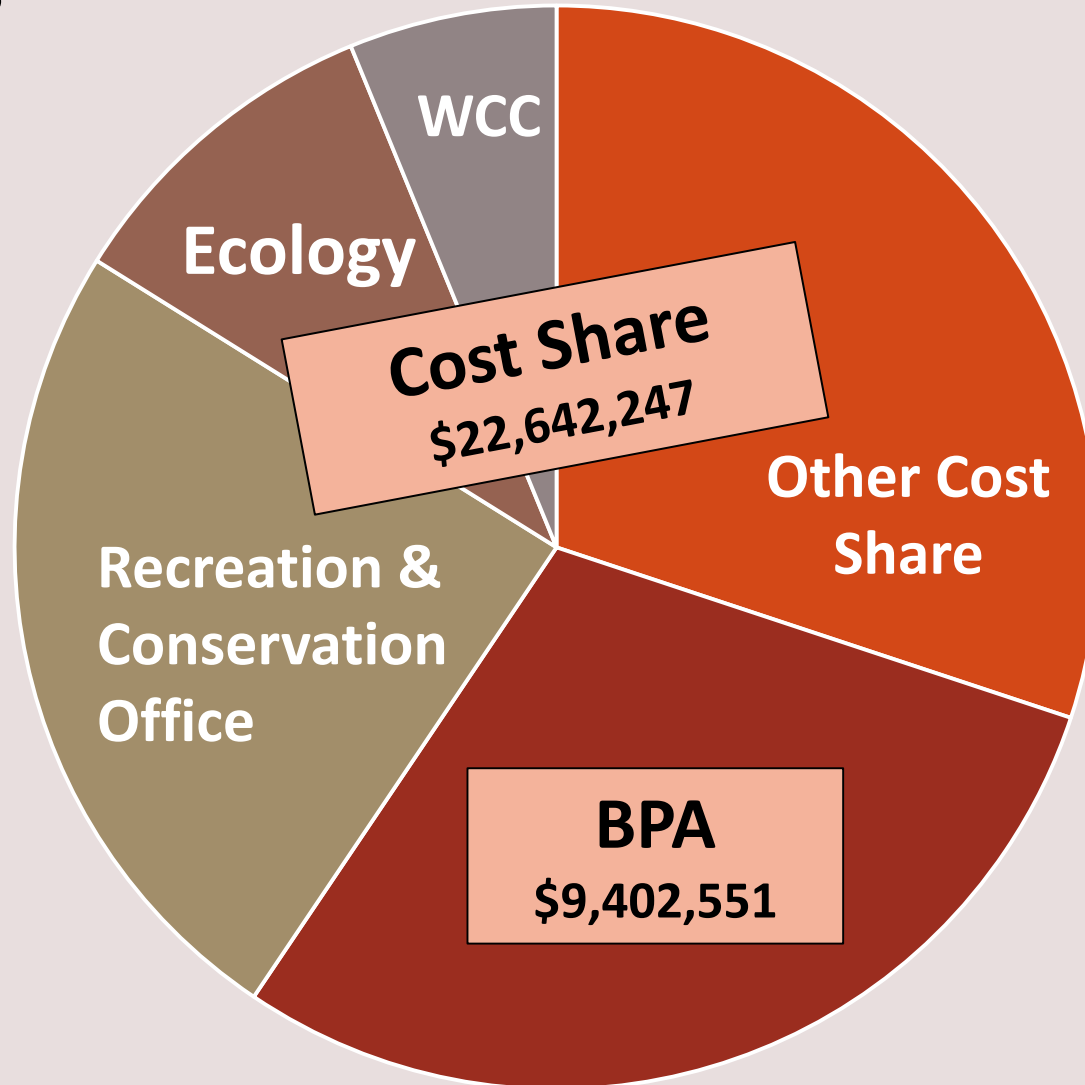
PARTNERSHIPS!

- ❖ **Bonneville Power Administration**
 - ❖ **Resource Conservation & Development Council**
 - ❖ **Kittitas County Conservation District**
 - ❖ **North Yakima Conservation District**
 - ❖ **Yakama Nation**
 - ❖ **Washington Department of Fish & Wildlife**
 - ❖ **Washington Department of Ecology**
 - ❖ **NOAA Fisheries**
 - ❖ **Mid-Columbia Fisheries Enhancement Group**
 - ❖ **Kittitas Conservation Trust**
 - ❖ **Yakima Basin Fish & Wildlife Recovery Board**
 - ❖ **Yakima Basin Joint Board**
 - ❖ **Washington Water Trust**
 - ❖ **Natural Resources Conservation Service**
 - ❖ **Benton Conservation District**
 - ❖ **US Fish & Wildlife Service**
 - ❖ **Bureau of Reclamation**
- ...and more!

YTAHP Project Selection



YTAHP Funding



Other Cost Share BPA RCO Ecology WA Conservation Commission

- In Kind Match:
- SRFB (RCO)
 - WA Ecology
 - WA Conservation Commission (WCC)
 - BOR
 - USFWS
 - RCPP
 - MCFEG
 - KCT
 - NOAA
 - BLM
 - McNary Mitigation
 - WWT
 - NFWF
 - FRIMA
 - EQUIP
 - NRCS

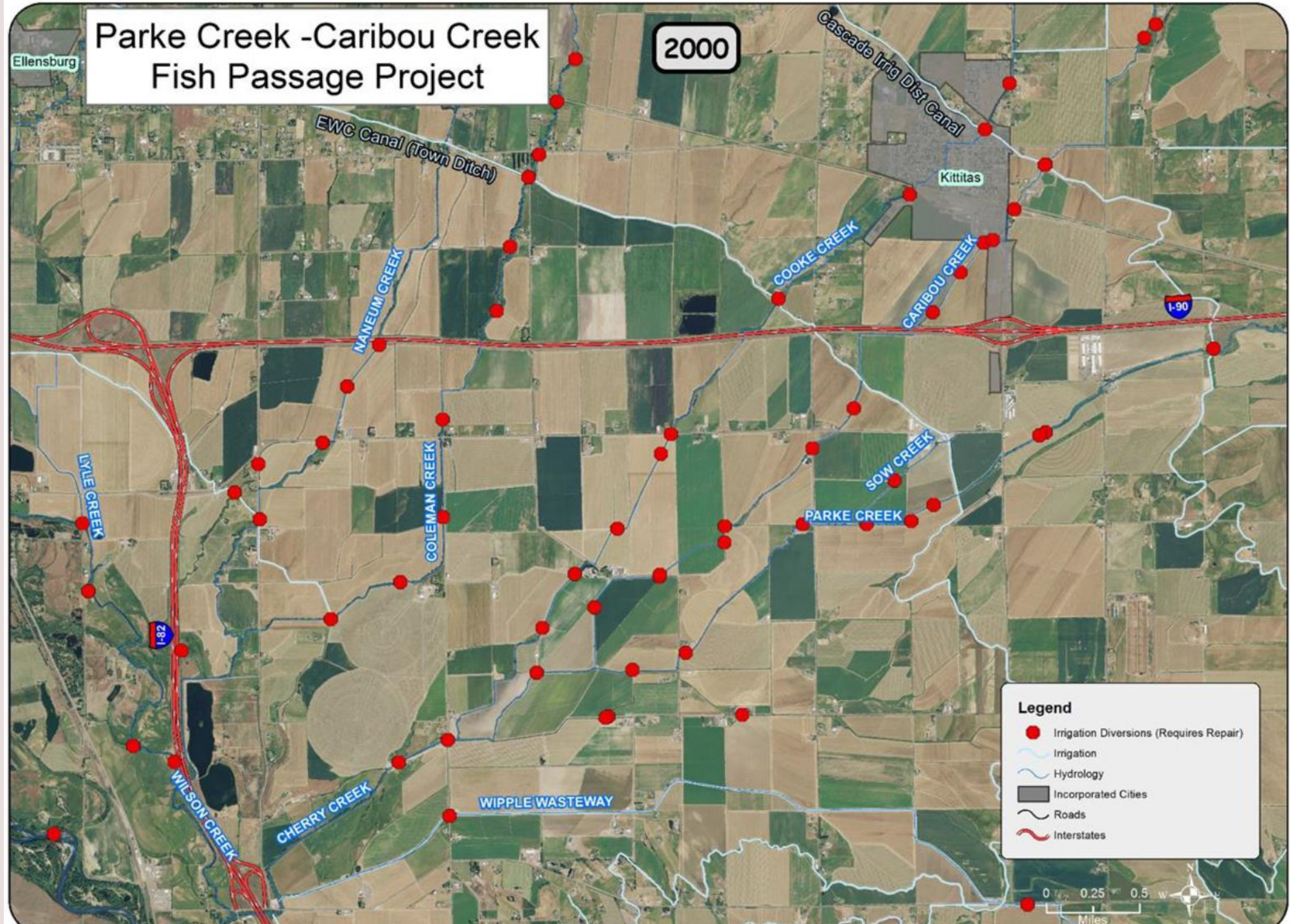
Accomplishments

2003 - 2017

- **181 projects on the ground**
- **>231 stream miles opened**
- **64 pump screens installed**
- **>331 cfs screened**
- **51 cfs trusted to instream flow**
- **Revegetated 218 acres and 15.4 miles of stream bank**
 - **Dedicated WCC crews plant and do routine maintenance at all sites over several years**

Parke Creek -Caribou Creek Fish Passage Project

2000



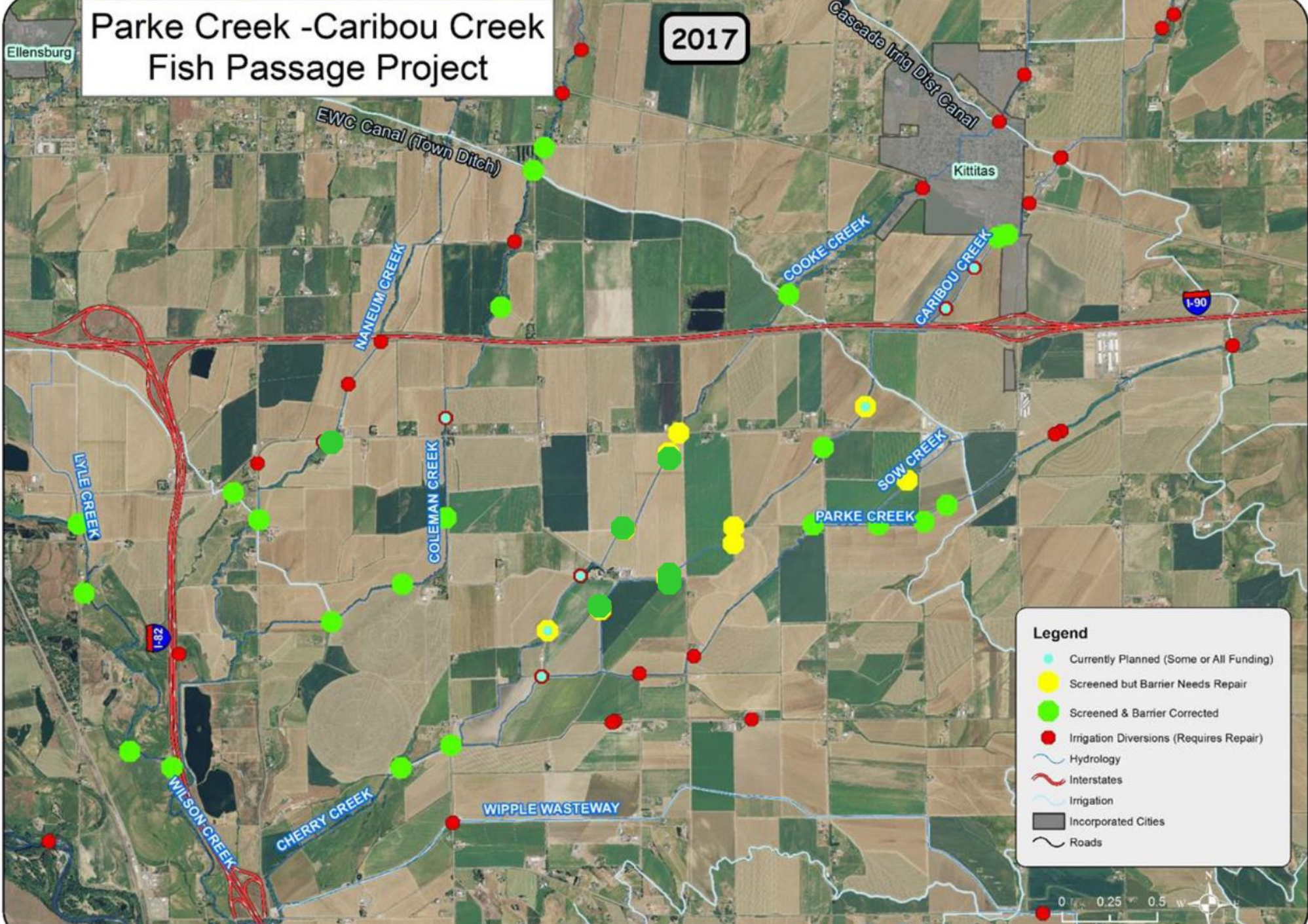
Legend

- Irrigation Diversions (Requires Repair)
- Irrigation
- Hydrology
- Incorporated Cities
- Roads
- Interstates



Parke Creek -Caribou Creek Fish Passage Project

2017



Ellensburg

Kittitas

KYLE CREEK

EWC Canal (Town Ditch)

NANEUM CREEK

COLEMAN CREEK

COOKE CREEK

CARIBOU CREEK

SOW CREEK

PARKE CREEK

CHERRY CREEK

WILSON CREEK

WIPPLE WASTEWAY

Legend

- Currently Planned (Some or All Funding)
- Screened but Barrier Needs Repair
- Screened & Barrier Corrected
- Irrigation Diversions (Requires Repair)
- Hydrology
- Interstates
- Irrigation
- Incorporated Cities
- Roads

0 0.25 0.5 Miles

Caribou Creek Diversion Removals, 2017



Cle Elum River large wood replenishment, 2009 & 2012

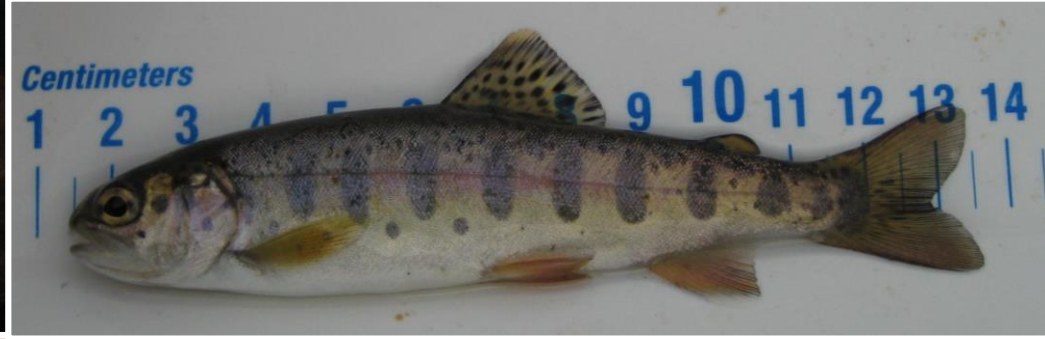


Cowiche Siphon Project, 2018



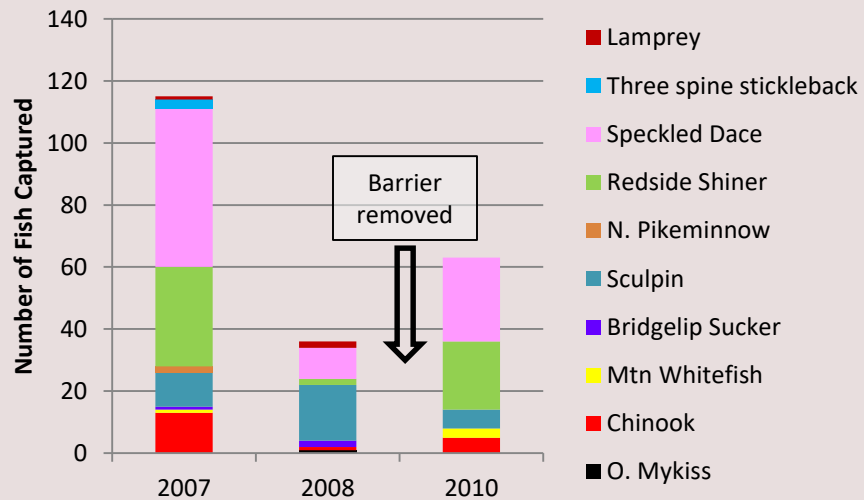
Biological Monitoring, Evaluation & Reporting

Before/after surveys to detect changes over time (are these actions working?)

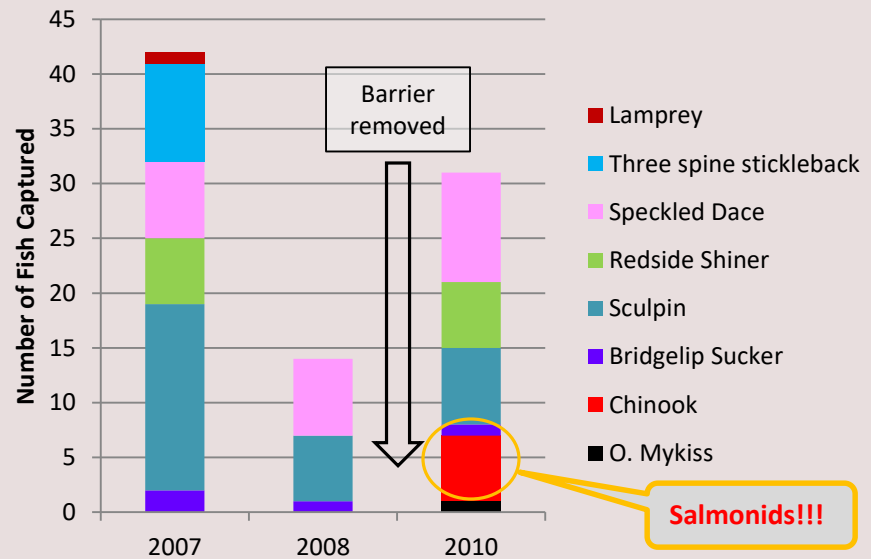




Downstream Barrier Coleman Creek



Upstream Barrier Coleman Creek



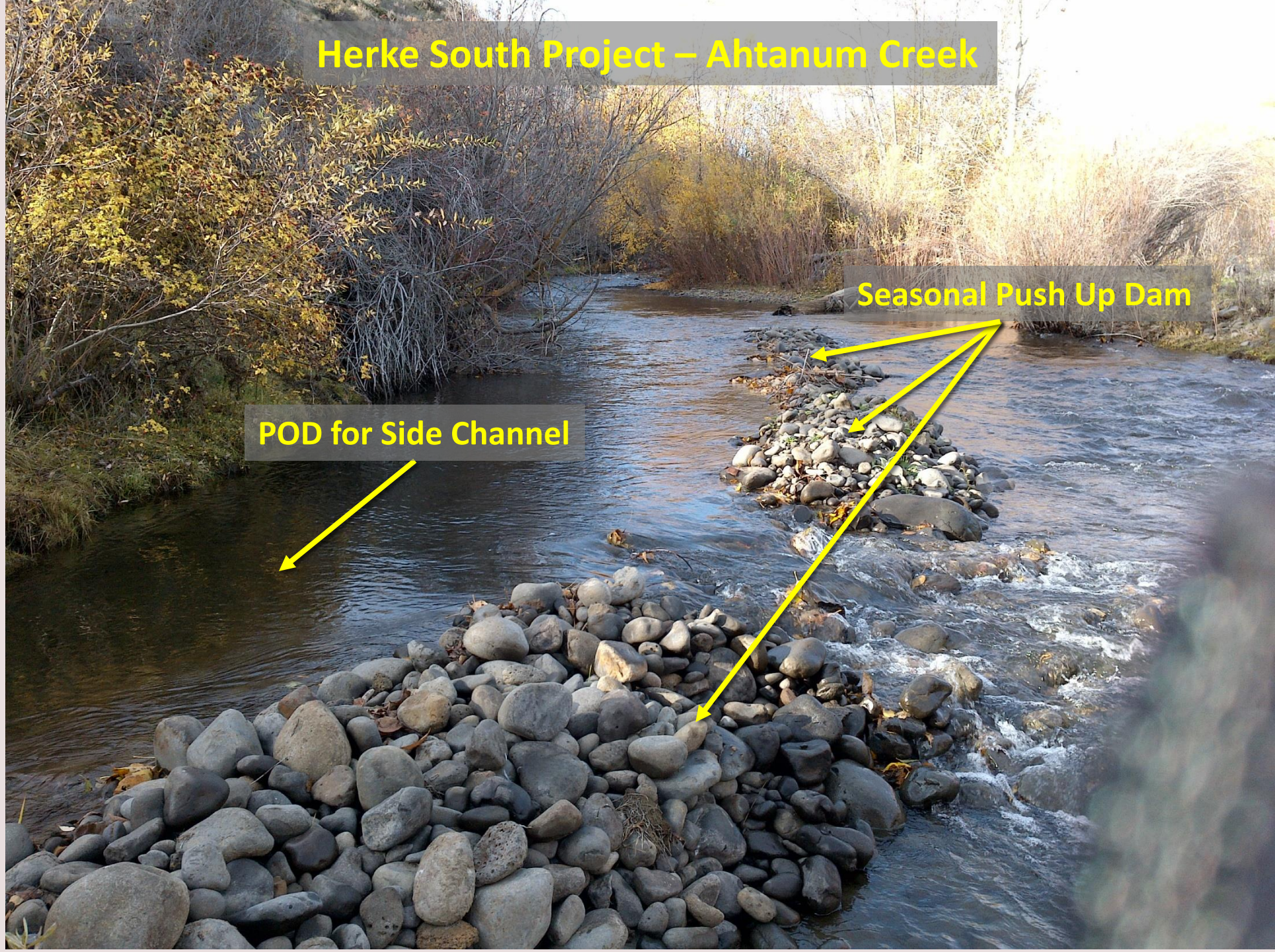
Salmonids!!!

Adaptive Management

- ❖ **Continuous process**
 - New partners; new funding sources
- ❖ **BPA Capital vs. Expense funding**
 - Ability to implement more habitat projects!
- ❖ **Implementing larger, more complex projects**
- ❖ **Reassessing priorities and watersheds – what's next?**

So what's next?

Herke South Project – Ahtanum Creek



POD for Side Channel

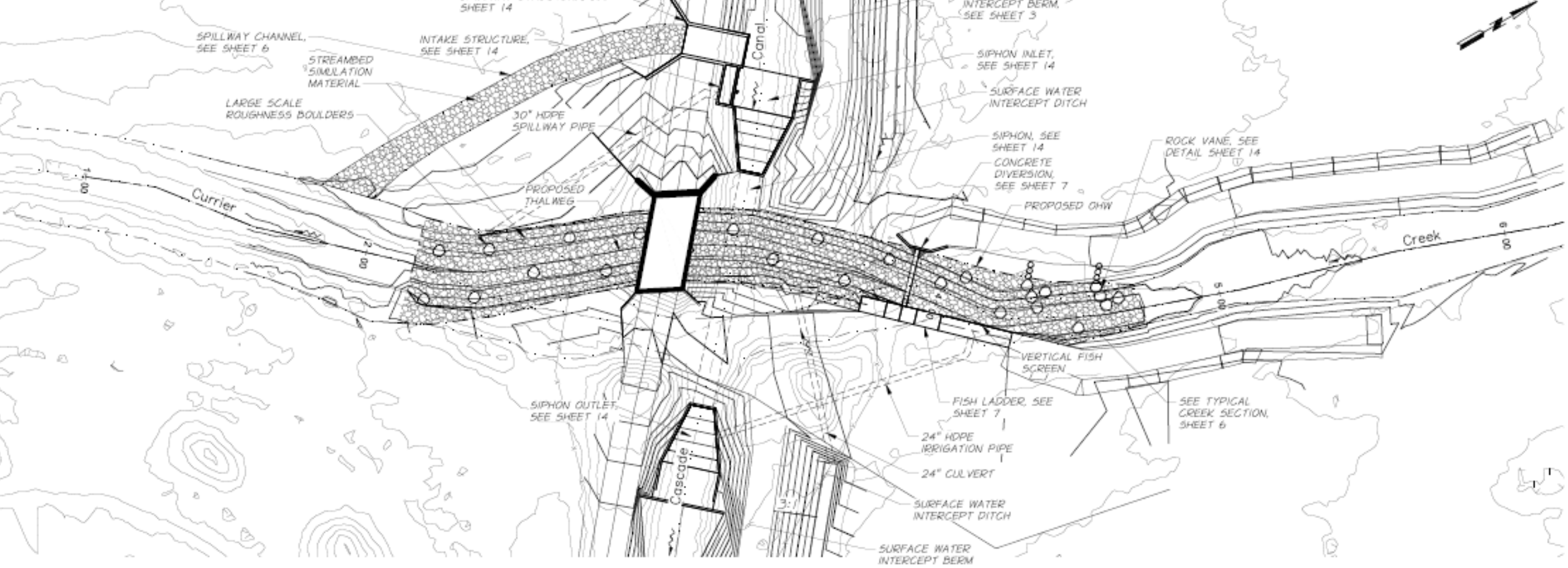
Seasonal Push Up Dam

POD for ditch

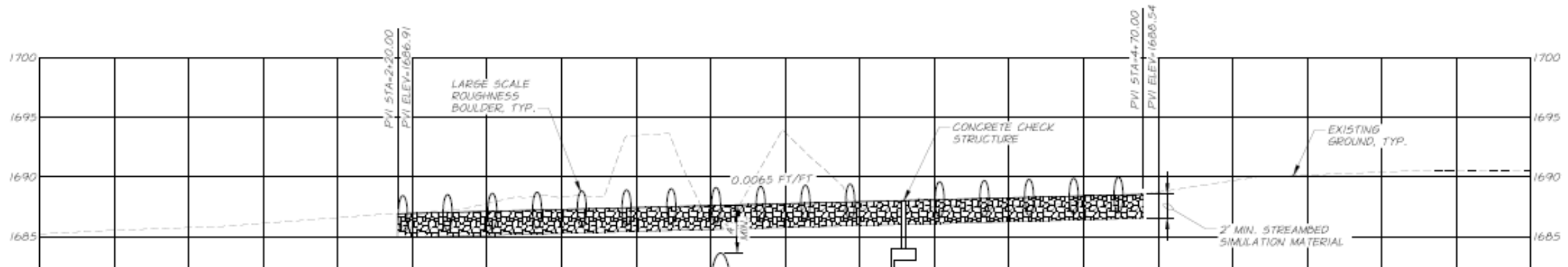


Side Channel





Carrier Creek at Cascade Irrigation District Intersection – 60% Designs



Development of more habitat projects!!



Thank You!

- ❖ **Bonneville Power Administration**
 - ❖ **Resource Conservation & Development Council**
 - ❖ **Kittitas County Conservation District**
 - ❖ **North Yakima Conservation District**
 - ❖ **Yakama Nation**
 - ❖ **Washington Department of Fish & Wildlife**
 - ❖ **Washington Department of Ecology**
 - ❖ **NOAA Fisheries**
 - ❖ **Mid-Columbia Fisheries Enhancement Group**
 - ❖ **Kittitas Conservation Trust**
 - ❖ **Yakima Basin Fish & Wildlife Recovery Board**
 - ❖ **Yakima Basin Joint Board**
 - ❖ **Washington Water Trust**
 - ❖ **Natural Resources Conservation Service**
 - ❖ **Benton Conservation District**
 - ❖ **US Fish & Wildlife Service**
 - ❖ **Bureau of Reclamation**
- ...and more!

Questions



Cassandra Weekes

Cassandra.Weekes@dfw.wa.gov

(509) 406-3206