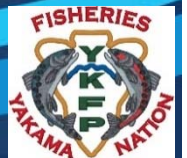


Building a Legacy: White Creek Large Woody Debris Project

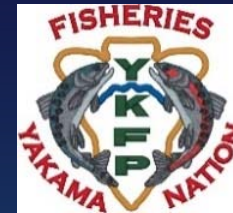


David Lindley
Columbia Gorge Science Conference
April 17, 2018

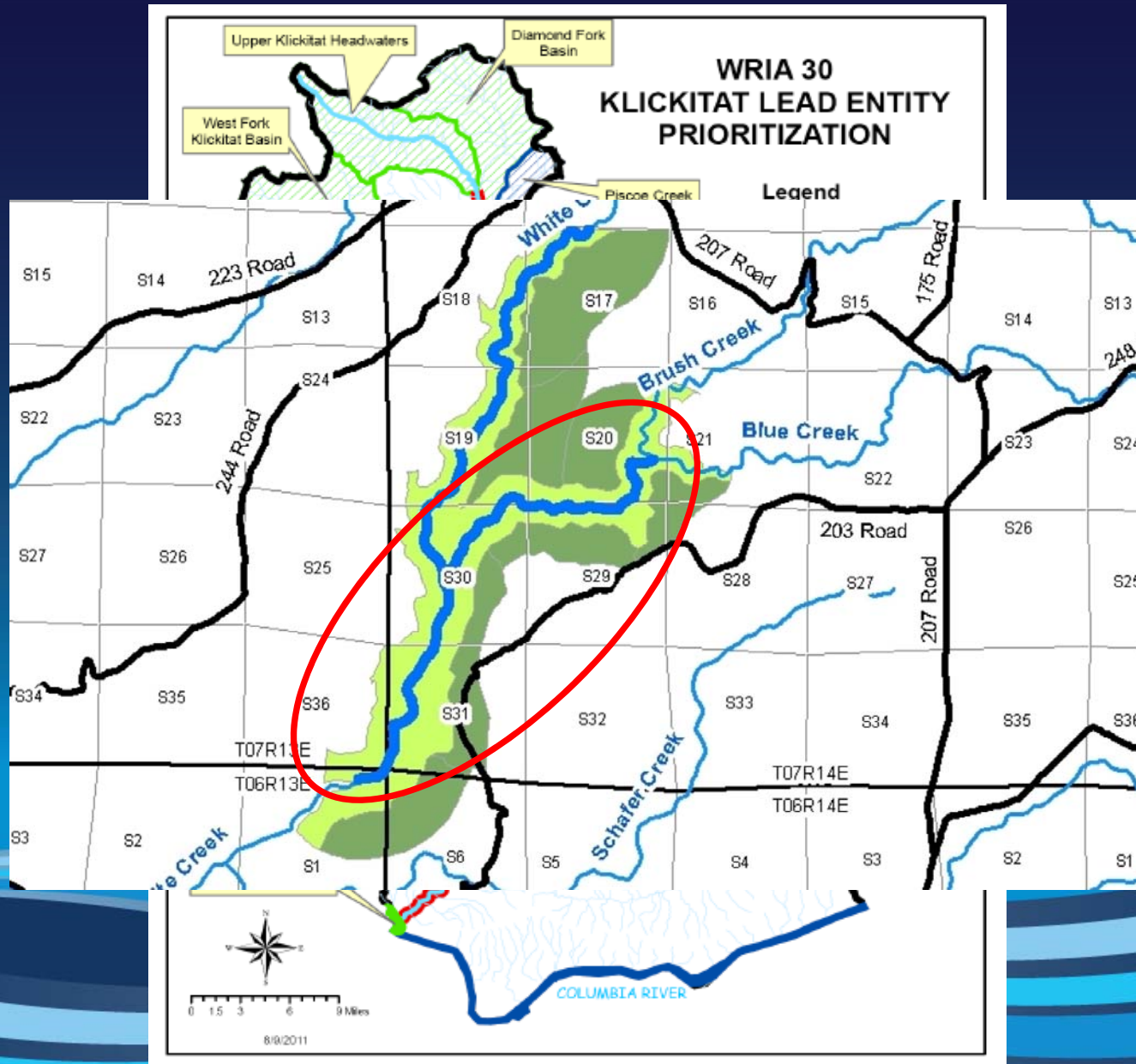


Presentation Overview

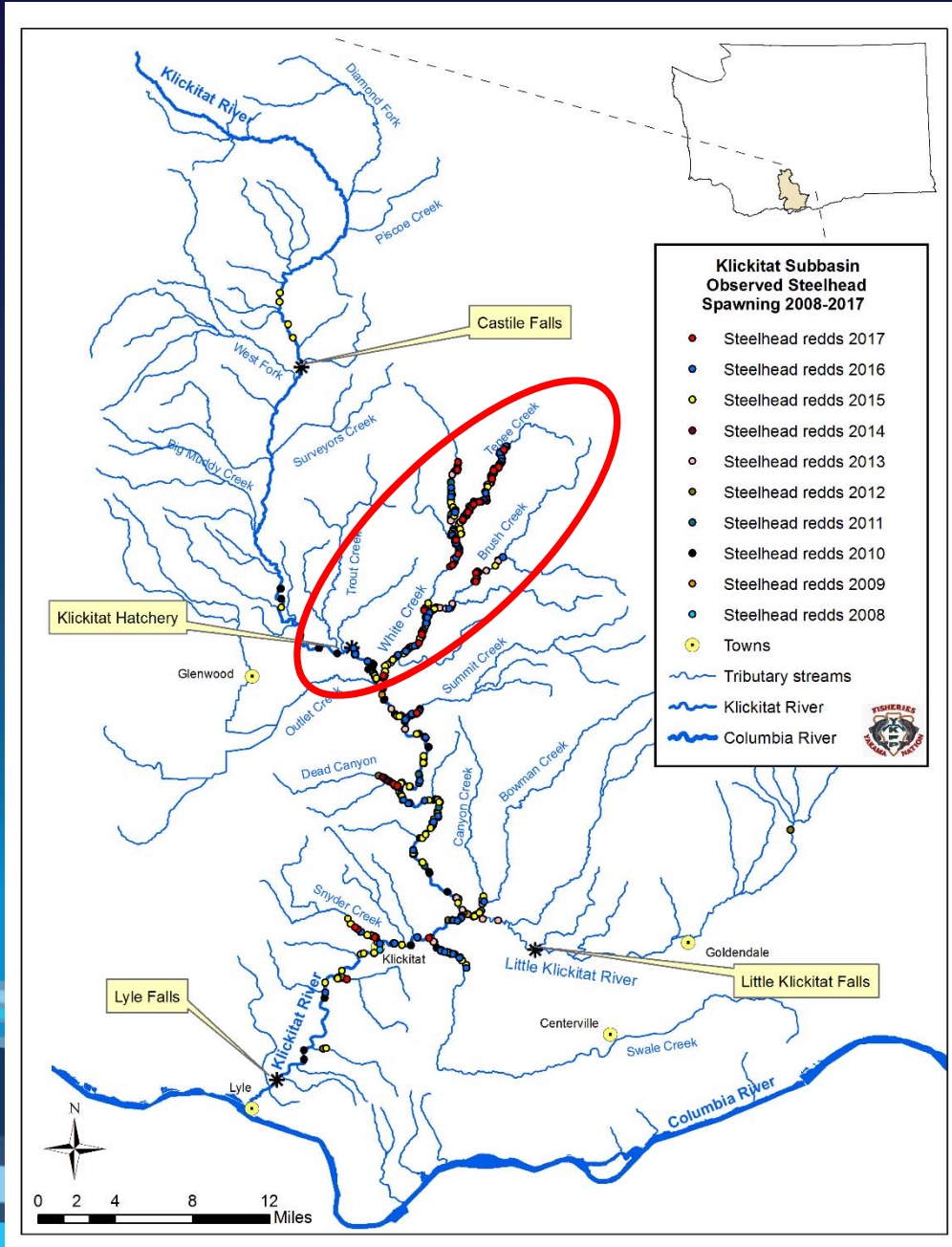
- Context
- Approach
- Implementation
- Results
- Video



White Ck Location

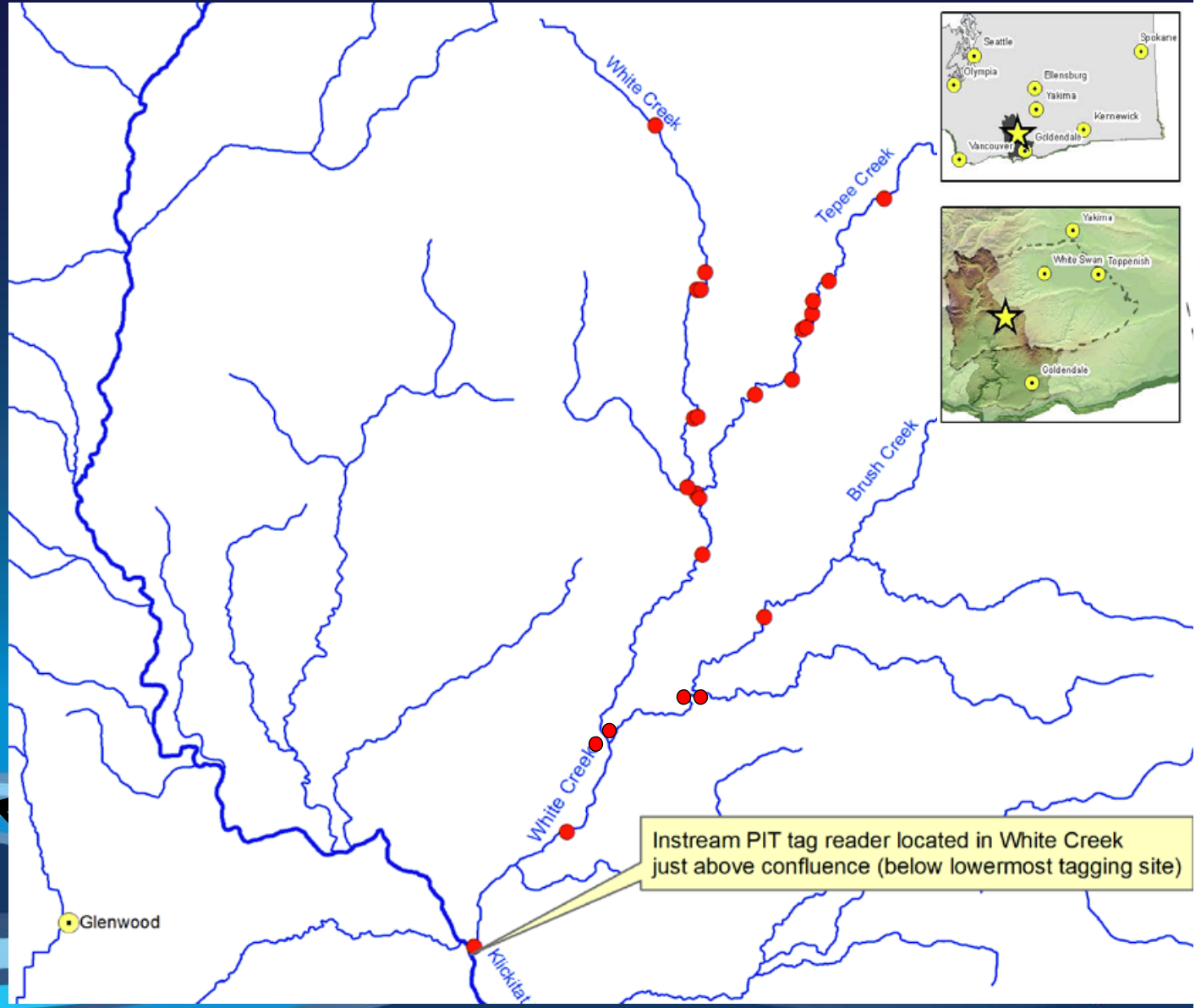


Fisheries Context



Fisheries Context

White Ck PIT Tag Study

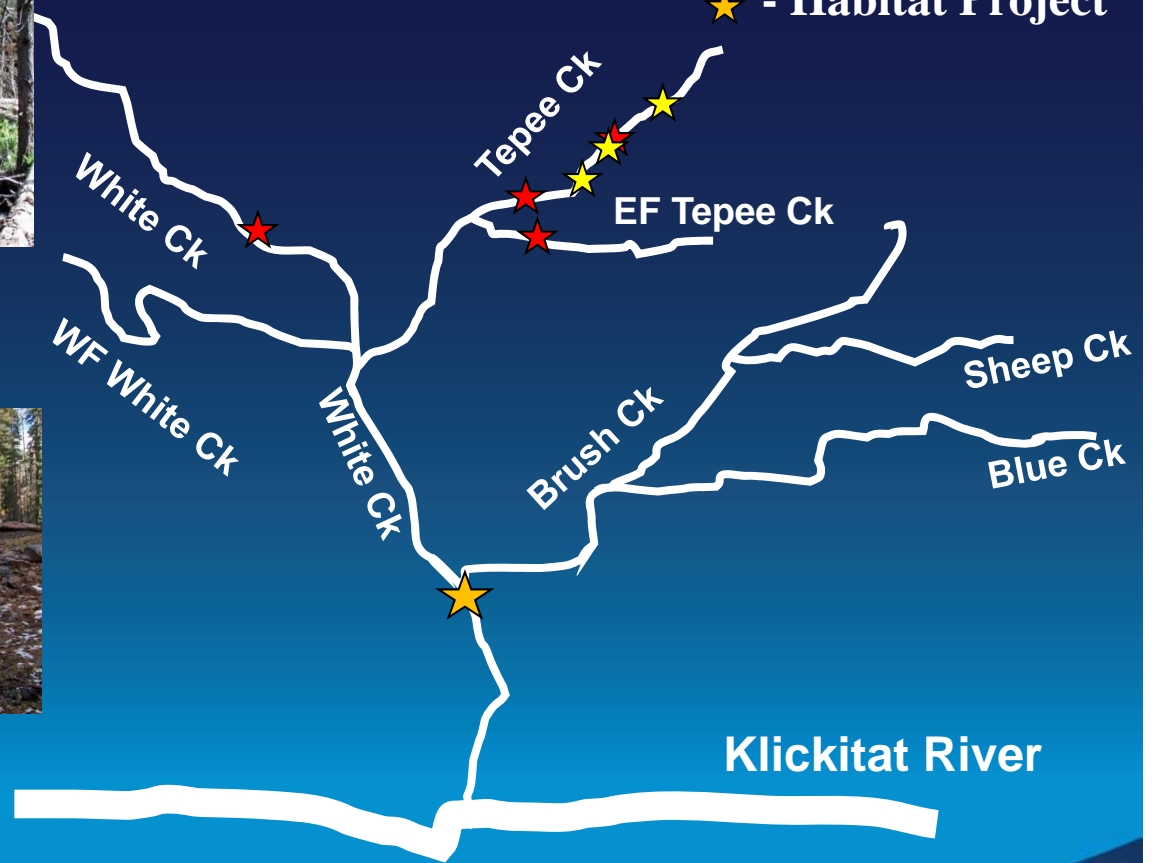


White Creek Context

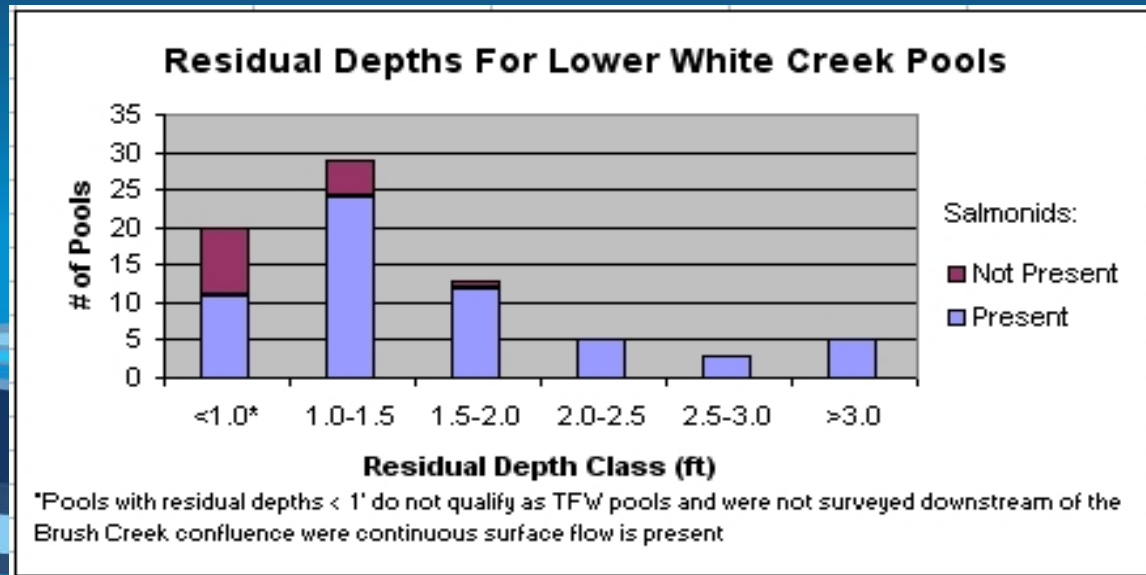


White Creek Context

- ★ - Passage Projects
- ★ - Meadows Project
- ★ - Habitat Project



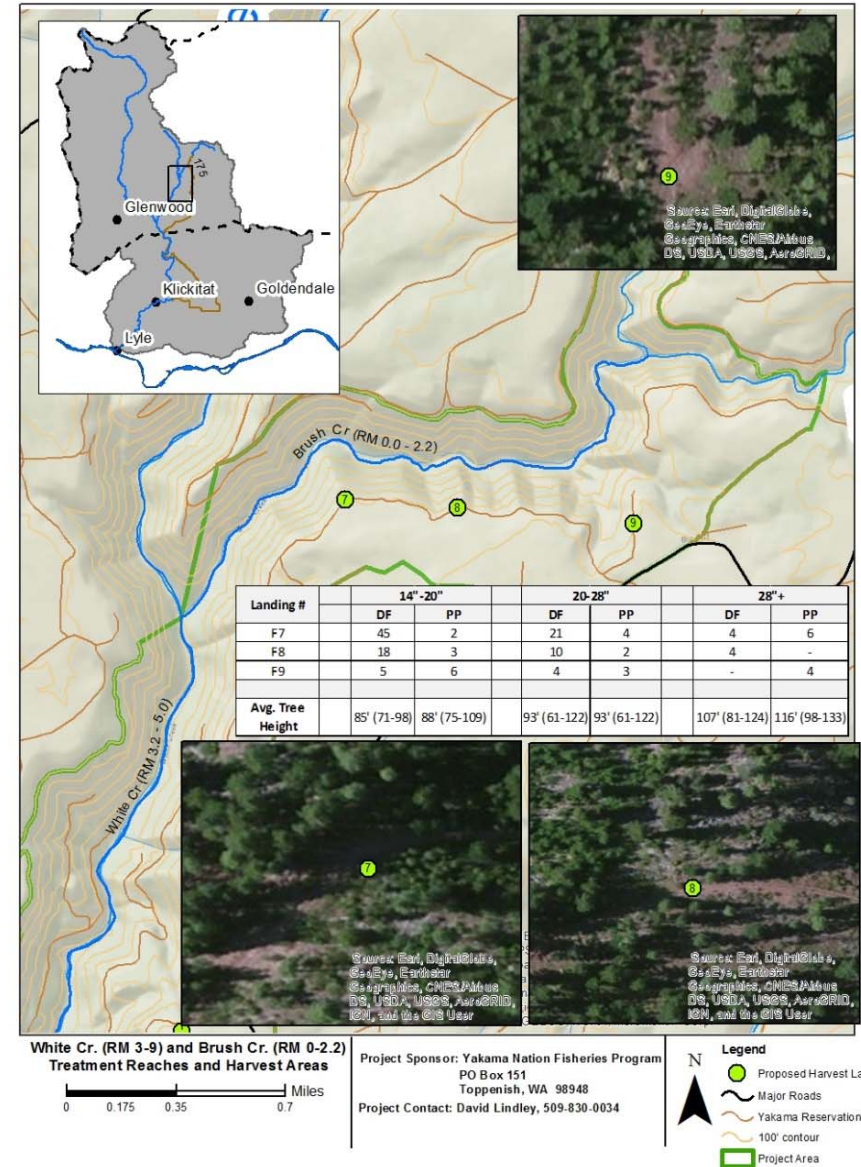
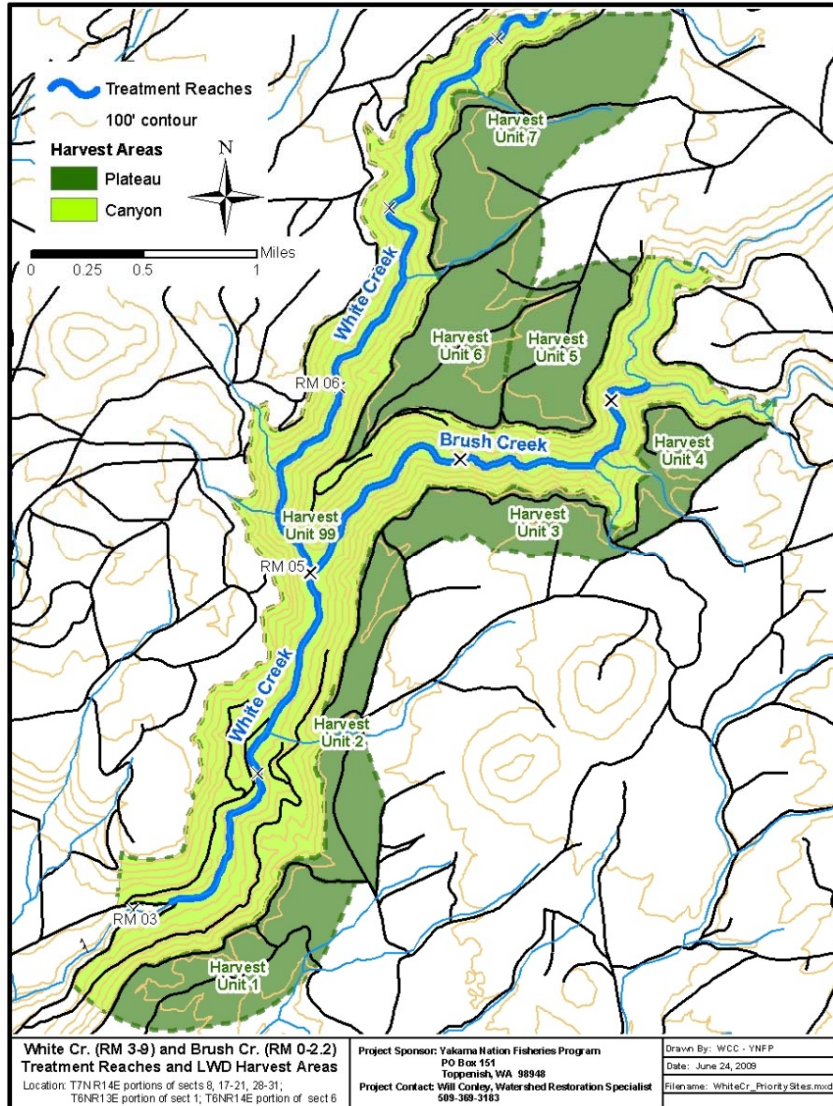
White Creek Context



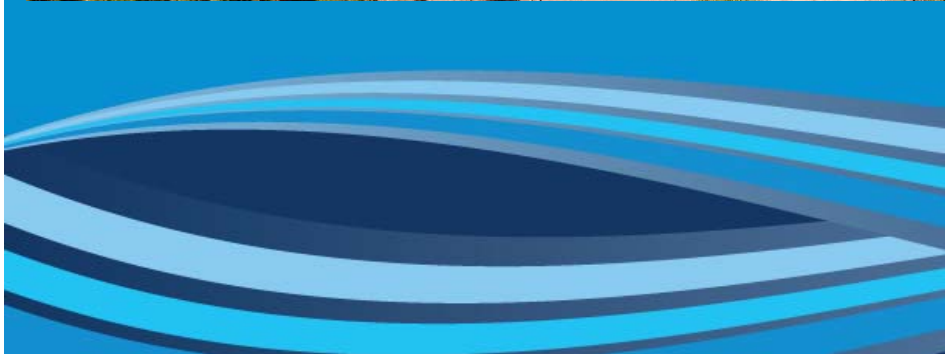
Project Approach



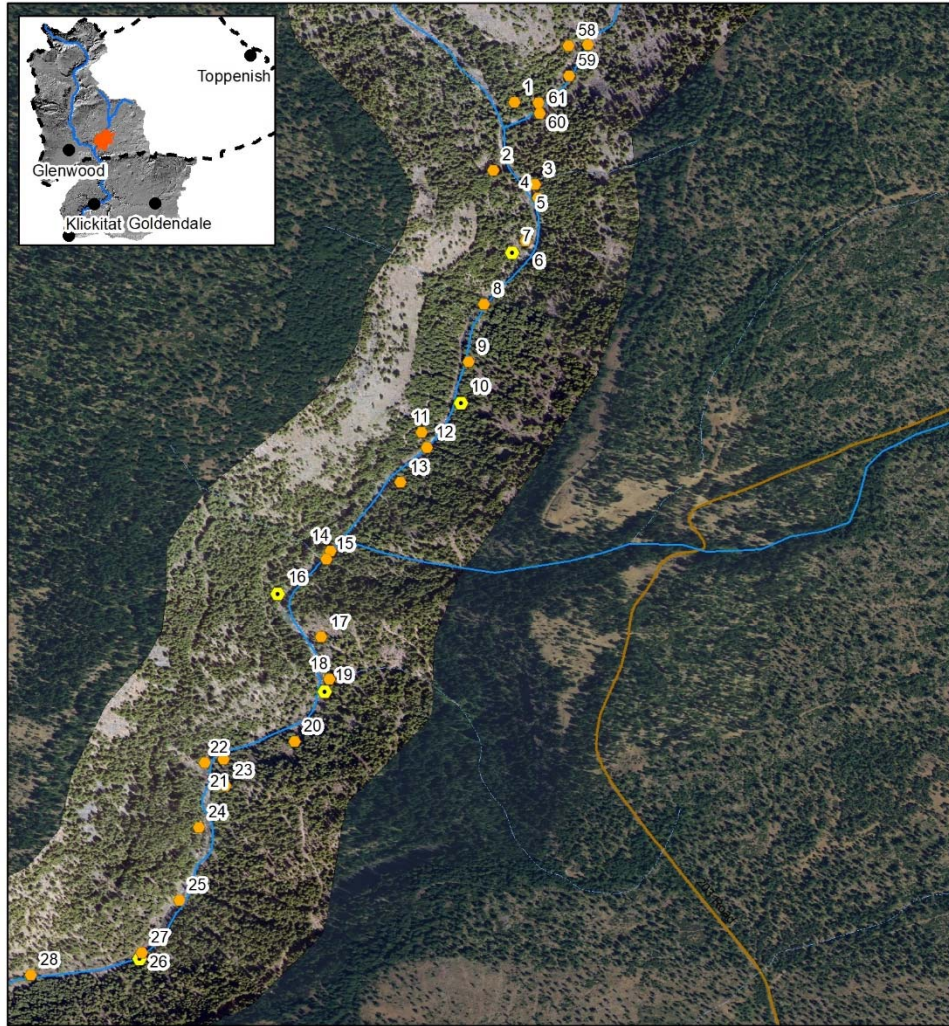
Harvest Units



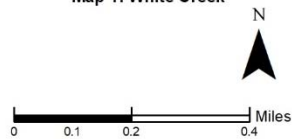
Harvest Landings



Treatment Sites



White Creek Habitat Restoration
Project Layout
Map 1: White Creek



Project Sponsor: Yakama Nation Fisheries Program
PO Box 151
Toppenish, WA 98948

Project Contact: David Lindley, 509-830-0034

Sites

- Sites
- Priority Sites
- Major Roads

Streams

- Intermittent
- Perennial

Treatment



- Forcing into Alluvial Bank
 - Gravel recruitment
 - Lateral scour

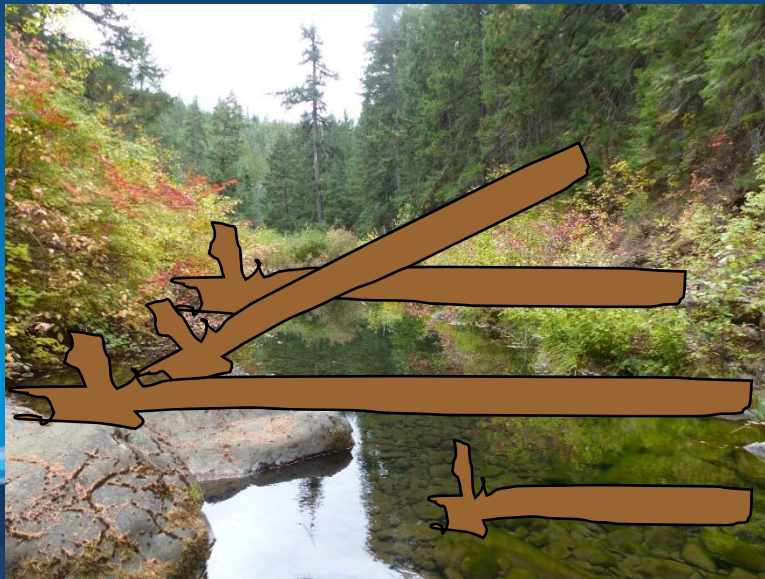


- Split Channel
 - Flow diversity/partion
 - Sediment deposition
 - Create hydraulic shadow

Treatment

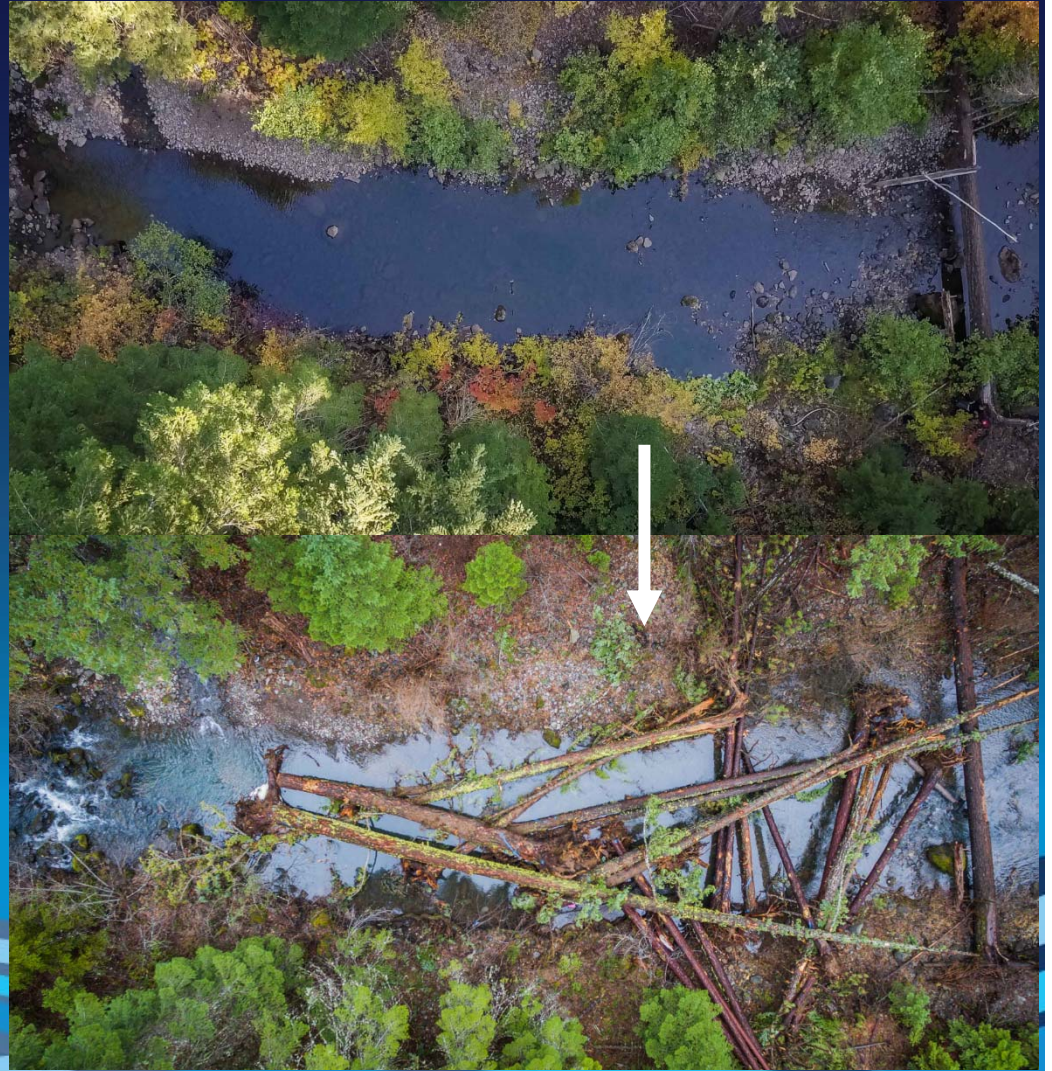
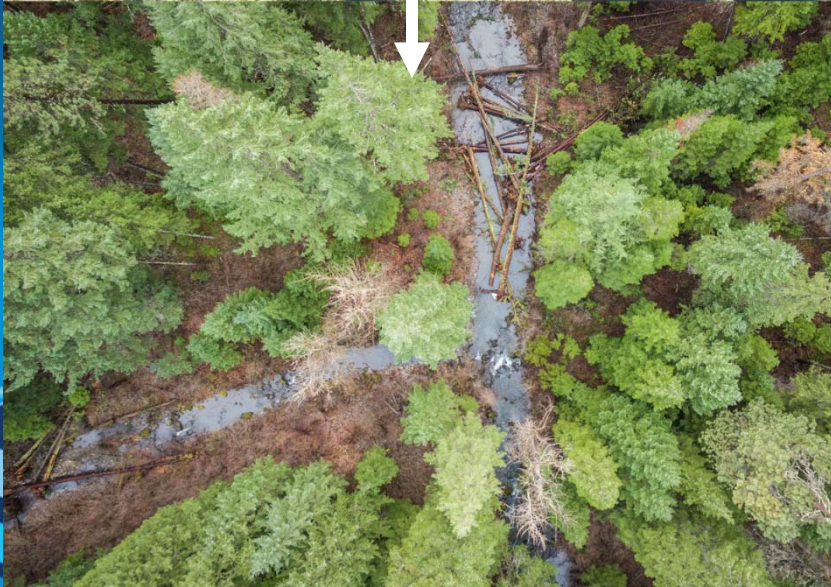
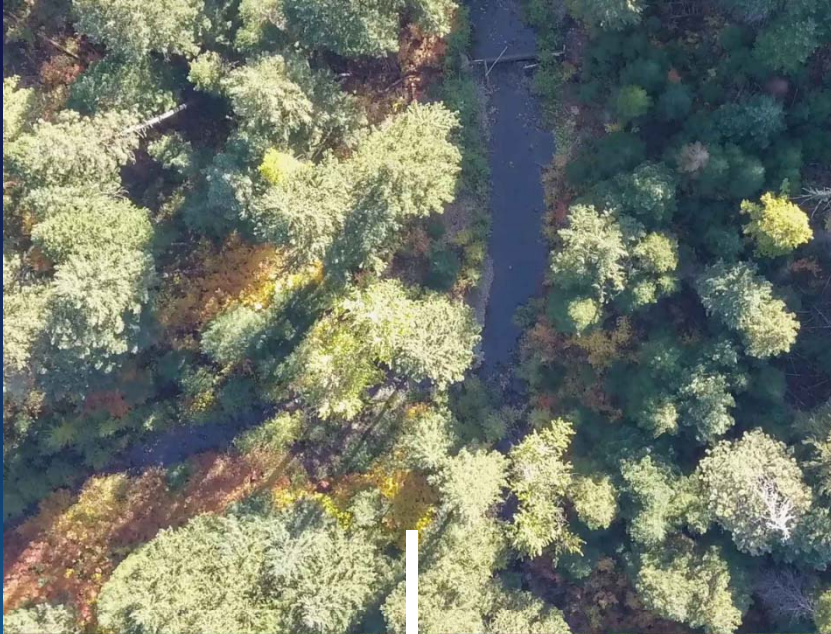


- Dam Pool Tail-out
 - Energy dissipation
 - Sediment deposition
 - Backwater



- Pool Enhancement
 - Localized scour
 - Cover, prey diversity

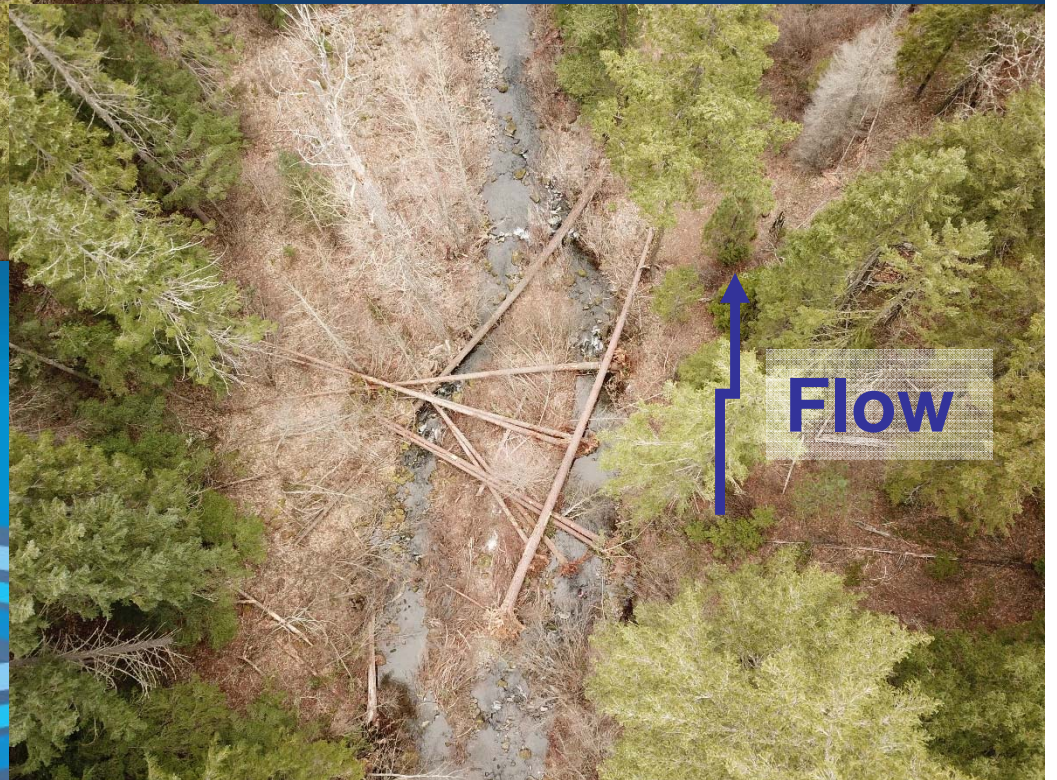
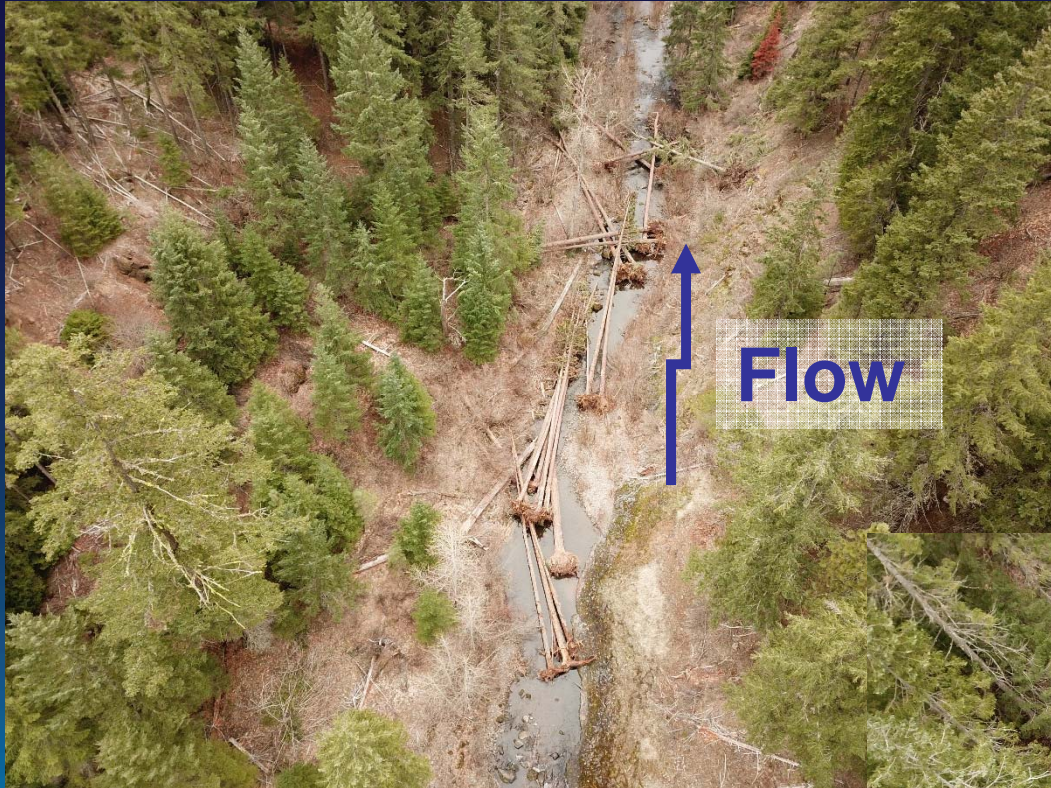
Before/After



As-built

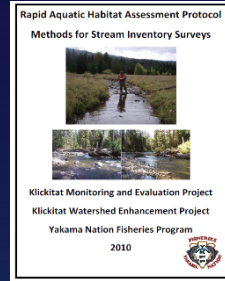


As-built



Monitoring

- Habitat Survey



- Redd Counts



- PIT Tag Study



- Photomonitoring



